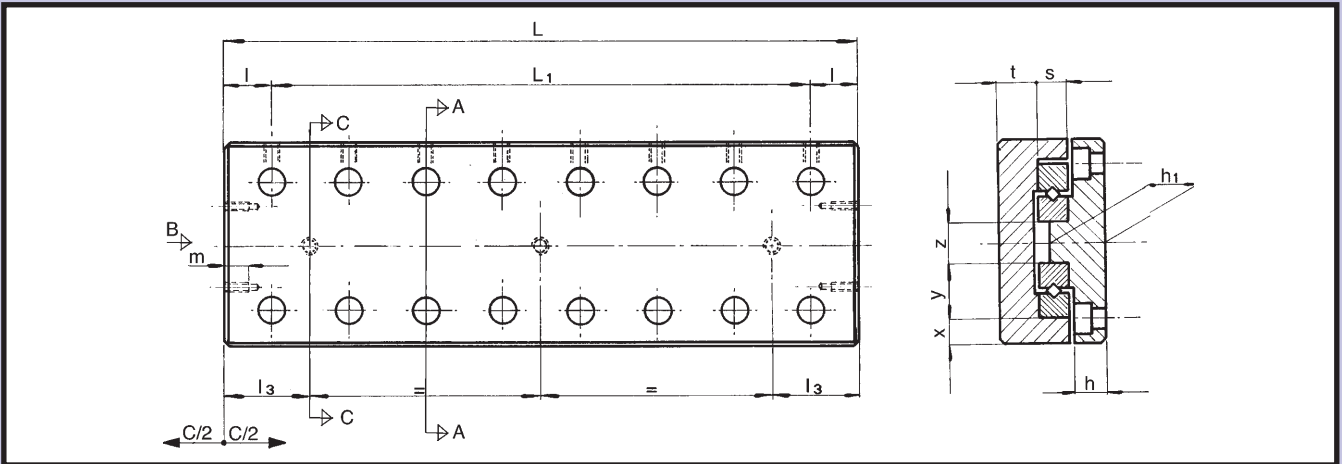


Tables type TR-1/2 are derived from steel. Tables type TR3-6 & 9 are derived from cast iron castings. They provide a clear example of applications for "R" systems. They are carefully machined to provide high precision movement.

Standard strokes of 10 to 950 mm. Load ratings of 20 to 2900 kg. The bases are provided with standard holes for mounting. The carriage can be used to support fixtures etc.

The surface can be drilled and tapped to suit individual applications. Holes should be blind and care taken to insure protection from chip penetration. On table TR9 it is possible to use needle roller rails RM/RV in order to increase load capacity.



Designation	Stroke C	L	L ₁	h	h ₁	l	l ₃	m	s	t	x	y	z
TR1-25	10	25	1x10				3.5						
TR1-35	18	35	2x10				4.5						
TR1-45	25	45	3x10				6.0						
TR1-55	32	55	4x10				7.5						
TR1-65	40	65	5x10	5.5	9.0	7.5	8.5	6.0	4.0	7.0	4.0	8.5	5.0
TR1-75	45	75	6x10				11.0						
TR1-85	50	85	7x10				13.5						
TR1-95	55	95	8x10				16.0						
TR1-105	60	105	9x10				18.5						
TR2-35	18	35	1x15				3.0						
TR2-50	30	50	2x15				4.5						
TR2-65	40	65	3x15				7.0						
TR2-80	50	80	4x15				9.5						
TR2-95	60	95	5x15	6.5	11.0	10.0	12.0	6.0	6.0	8.0	5	122	6
TR2-110	70	110	6x15				14.5						
TR2-125	80	125	7x15				17.0						
TR2-140	90	140	8x15				19.5						
TR2-155	100	155	9x15				22.0						
TR3-55	30	55	1x25				5.5						
TR3-80	45	80	2x25				10.5						
TR3-105	60	105	3x25				15.5						
TR3-130	75	130	4x25	9.0	15.0	15.0	20.5	7.0	8.0	10.5	7.0	18.0	10.0
TR3-155	90	155	5x25				25.5						
TR3-180	105	180	6x25				30.5						
TR3-205	130	205	7x25				30.5						
TR6-110	60	110	1x50				16.0						
TR6-160	95	160	2x50				23.5						
TR6-210	130	210	3x50				31.0						
TR6-260	165	260	4x50	13	22	30.0	38.5	8.0	15.0	16.0	12.0	31.0	14.0
TR6-310	200	310	5x50				46.0						
TR6-360	235	360	6x50				53.5						
TR6-410	265	410	7x50				63.5						
TR9-210	130	210	1x100				27						
TR9-310	180	310	2x100				52						
TR9-410	350	410	3x100				17						
TR9-510	450	510	4x100				17						
TR9-610	550	610	5x100	16	29	55	17	10	22	21	14.5	44	28
TR9-710	650	710	6x100				17						
TR9-810	750	810	7x100				17						
TR9-910	850	910	8x100				17						
TR9-1010	950	1010	9x100				17						

Carriages available with standard tappings, details available on request

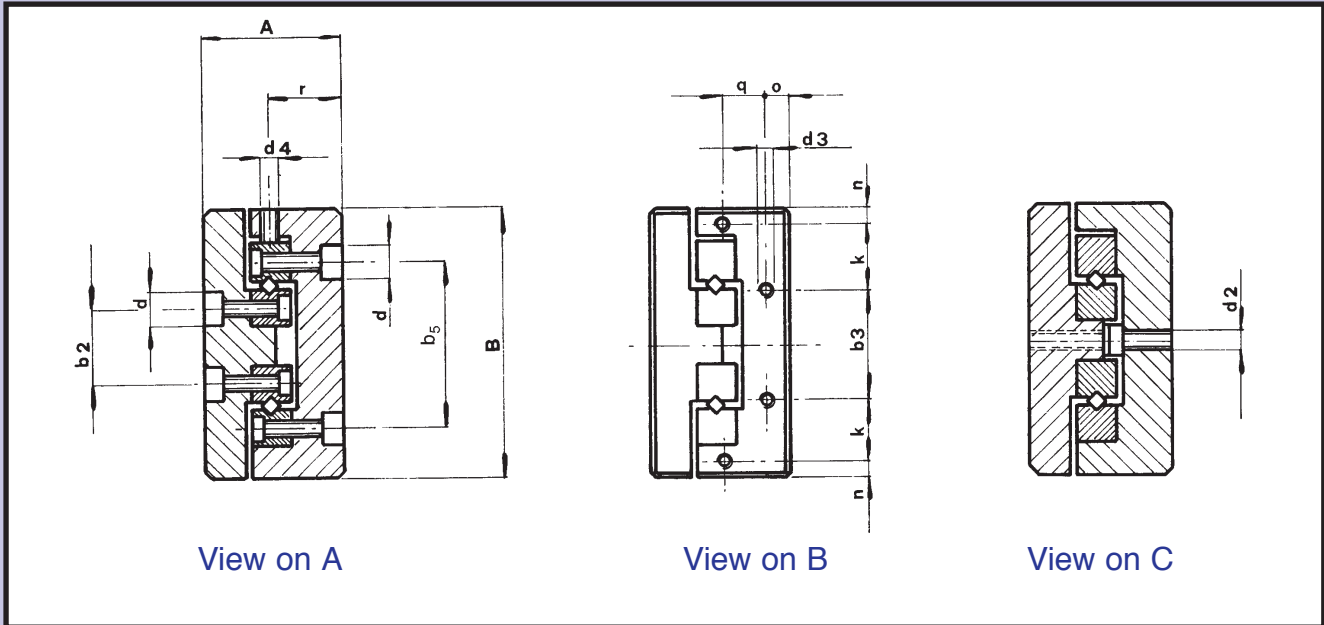
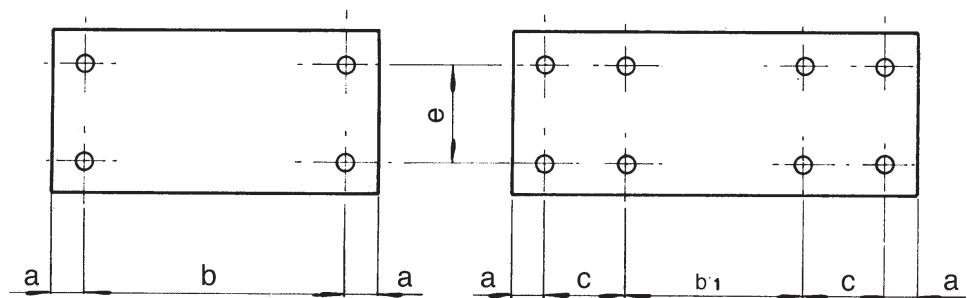
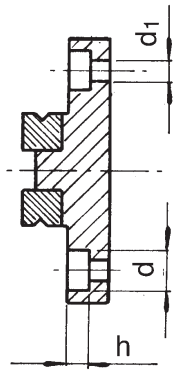
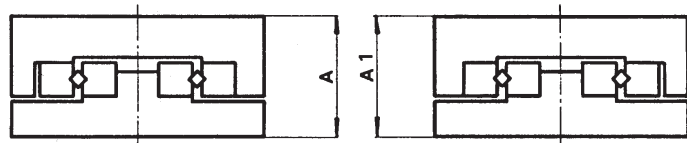


Table Designation	A	B	b ₅	b ₂	b ₃	d	d ₂	d ₃	d ₄	k	n	o	q	r	Max Allowable dynamic Load (kg)	Table weight (kg)
TR1-25	17	30	18.4	8.6	12	4.1	M2	M2	M2	—	—	2.5	—	9	20	0.08
TR1-35															28	0.12
TR1-45															36	0.15
TR1-55															44	0.18
TR1-65															52	0.21
TR1-75															60	0.25
TR1-85															72	0.28
TR1-95															80	0.31
TR1-105															92	0.35
TR2-35	21	40	25	11	16	6	M3	M2	M3	—	—	3.4	—	11	30	0.18
TR2-50															42	0.26
TR2-65															60	0.35
TR2-80															72	0.42
TR2-95															90	0.50
TR2-110															102	0.59
TR2-125															120	0.67
TR2-140															132	0.75
TR2-155															150	0.83
TR3-55	28±0.1	60±0.1	39	17	40	7.5	M4	M4	M4	—	—	5.5	—	14.5	70	0.57
TR3-80															100	0.80
TR3-105															140	1.30
TR3-130															170	1.26
TR3-155															210	1.49
TR3-180															240	1.72
TR3-205	270	1.95														
TR6-110	45±0.1	100±0.1	64	26	60	11	M5	M4	M5	16	4	8	15	23.5	200	3.07
TR6-160															320	4.46
TR6-210															440	5.85
TR6-260															520	7.24
TR6-310															640	8.63
TR6-360															760	10.02
TR6-410															880	11.41
TR9-210	60±0.1	145±0.2	98	46	90	14	M8	M4	M6	22.5	5	11	20	32	700	11.80
TR9-310															1100	17.30
TR9-410															1200	22.80
TR9-510															1500	28.30
TR9-610															1800	33.80
TR9-710															2000	39.30
TR9-810															2300	44.80
TR9-910															2600	50.30
TR9-1010															2900	55.80



The parallelism of matched tables is contained within ± 0.01 mm (Dimension A-A1)



Base Mounting Hole Dimensions

Table Designation	a	b	b ₁	c	e	h	d	d ₁
TR1-25	3.5	18	—	—	22	2.5	4.1	2.5
TR1-35		28	—	—				
TR1-45		38	—	—				
TR1-55		—	28	10				
TR1-65		—	38	10				
TR1-75		—	48	10				
TR1-85		—	58	10				
TR1-95		—	68	10				
TR1-105		—	78	10				
TR2-35		5	25	—				
TR2-50	40		—	—				
TR2-65	55		—	—				
TR2-80	—		40	15				
TR2-95	—		55	15				
TR2-110	—		70	15				
TR2-125	—		85	15				
TR2-140	—		90	15				
TR2-155	—		105	15				
TR3-55	10	35	—	—	40	5	7.5	4.5
TR3-80		60	—	—				
TR3-105		85	—	—				
TR3-130		110	—	—				
TR3-155		135	—	—				
TR3-180		160	—	—				
TR3-205	185	—	—					
TR6-110	10	90	—	—	60	7	11	7
TR6-160		140	—	—				
TR6-210		190	—	—				
TR6-260		240	—	—				
TR6-310		—	190	50				
TR6-360		—	240	50				
TR6-410		—	290	50				
TR9-210	55	100	—	—	90	9	14	9
TR9-310		200	—	—				
TR9-410		300	—	—				
TR9-510		400	—	—				
TR9-610		—	300	100				
TR9-710		—	400	100				
TR9-810		—	300	200				
TR9-910		—	400	200				
TR9-1010		—	500	200				