

RP, RL, RM, RCP, RCL, RCM, RCSP, RCSL, RCSM Models

Application High accuracy positioning in machining and inspection operations. Horizontal or vertical operation.

Crossed Roller Advantages

- 1. Low coefficient of friction
- 2. High Speed Travel
- 3. Long Service Life
- 4. High Load

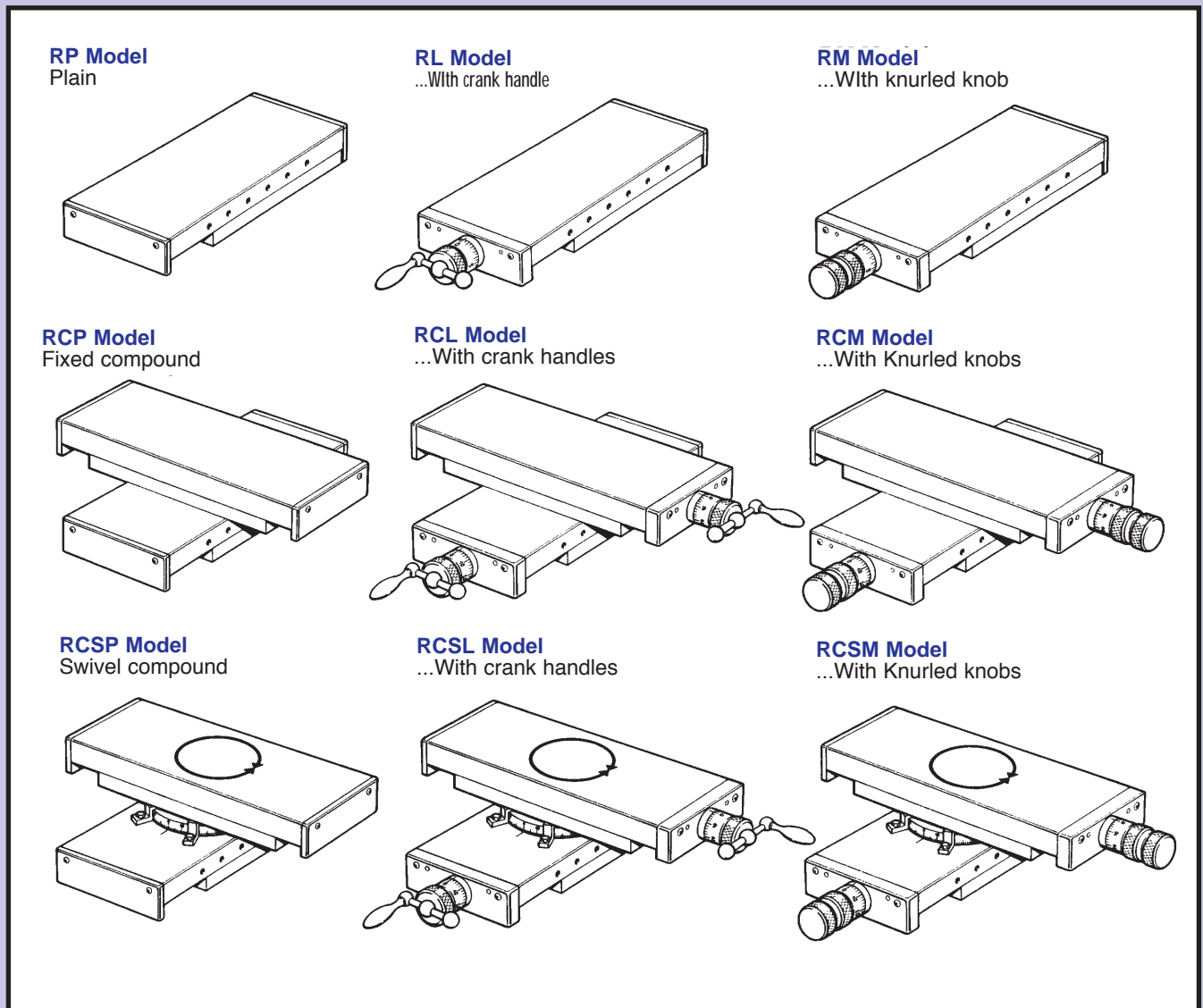
Slide Construction Precision ground, stress relieved ASTMA-48 GC35 Cast Iron (GG25) or 361 Aluminium (G-A1). The following surface treatments are available upon request: Cast Iron - Electroless Nickel Plating. Black chrome plating. Aluminium - Black anodized, Hard anodized, Hard coated. Various models can be compounded into XY configurations.

Leadscrew Design Standard Leadscrews are hardened and ground. Pitch accuracy is ± 0.02 mm per 300 mm of travel.

Maintenance Little maintenance is required. Where travel is rapid and continuous (over 1270mm/min), oil lubrication may be necessary.

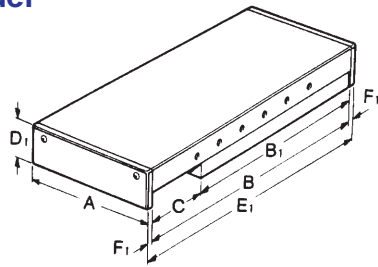
Accessories Many accessories are available for different applications.

Modification When modifying slides see page 29 for carriage and base dimensions.

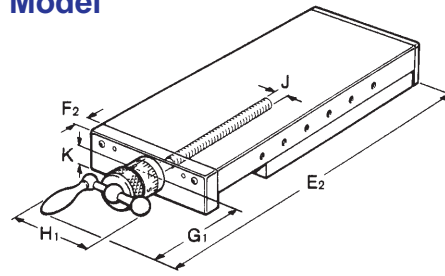


All illustrations show right hand mounting, left hand mounting available upon request. Also Available with built in Hydraulic and Pneumatic cylinders, contact Automation for details

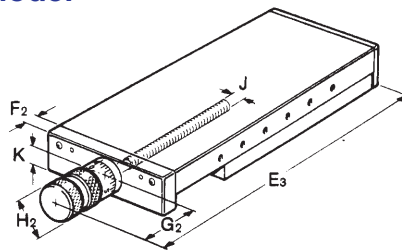
RP Model



RL Model

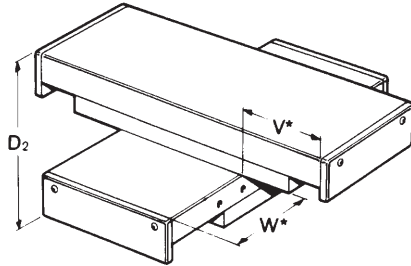


RM Model

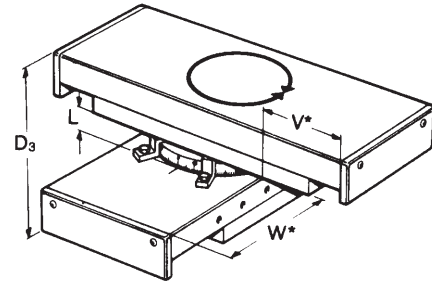


Size	Slide Width A	Saddle Length B	Base Length B ₁	Travel C	Height			Over-All Length Without Bellows			Without Bellows		With Bellows	
					D ₁	D ₂	D ₃	E ₁	E ₂	E ₃	F ₁	F ₂	F ₁	F ₂
1	50	76	50	22	25	50	—	88	156	138	6	14	6	14
2		102	76	25				114	182	164				
3		152	101	50				164	232	214				
4	75	102	76	25	32	64	82	114	193	170	6	15	6	15
5		127	101	25				139	218	195				
6		152	101	50				164	243	220				
7	100	152	126	25	37	74	92	164	243	222	6	15	6	15
8		203	152	50				215	294	273				
9		254	203	50				266	345	324				
10		305	228	75				317	396	375				
11	150	203	152	50	50	100	120	219	334	297	8	16	8	16
12		305	203	100				321	436	399				
13		406	304	100				422	537	500				
14		406	253	150				422	537	500				
15	200	457	304	150	58	116	136	473	588	551	8	16	8	16
16		610	406	200				626	741	704				
17	300	410	308	100	75	150	180	430	607	538	10	20	70	70
18		610	408	200				630	807	738				
19		710	408	300				730	907	838				
20		910	508	400				930	1107	1038				
21		1010	508	500				1030	1207	1138				
22		1210	608	600				1230	1407	1338				

RCP Model



RCSP Model

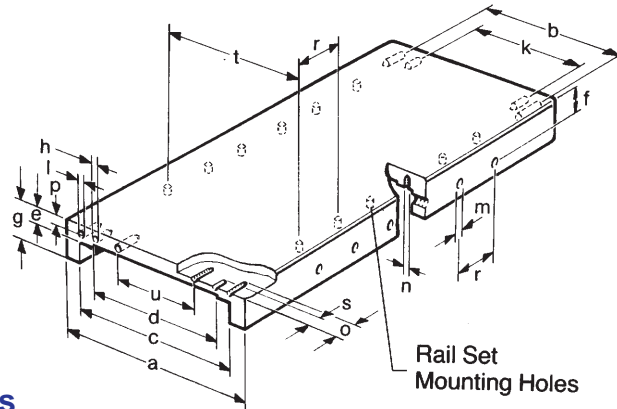


Note: Dimensions V & W unless otherwise specified tables will be positioned about the centre line

Size	G1	G2	H ₁	H ₂ Ø	Leadscrew Thread Size J	K	L	Approx Weight (kg)	Load (kg) Capacity	Rail Set Used
1								0.6	40	R3050
2	60	42	50	23.9	M6x1	12.5	—	0.8	60	R3075
3								1.1	70	R3100
4								1.8	72	R3075
5	70	47	56	31	M8x1	16	18	2	96	R3100**
6								2.5	84	R3100
7								4	132	R3125
8	70	49	56	35	M12x1	18	18	4.7	144	R3150
9								6.1	204	R3200
10								7	216	R3225
11								10	240	R6150
12	107	70	106	48	M20x1	24.3	20	13.2	288	R6200
13								18	480	R6300
14								16.5	336	R6250
15	107	70	106	48	M20x1	28.3	20	30	360	R6300**
16								40	480	R6400
17								59	800	R9300**
18								80	1000	R9400
19	166.5	97.5	125*	68	Tr.26x4	35	30	91.5	800	R9400**
20								110	1000	R9500**
21								125	800	R9500**
22								145	1000	R9600**

* Handwheel used instead of thumbscrew ** Number of bearings may differ

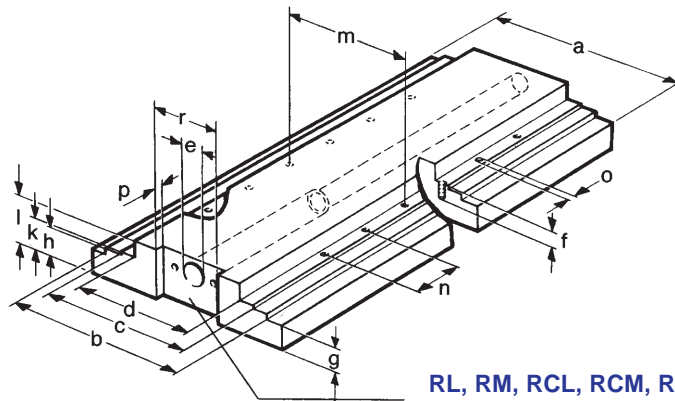
All models are cast in cast iron or Aluminium. Approximate weight and load capacity in the above chart is for model RP Cast Iron Slides. For Aluminium slides, the approximate weight is 55% of the Cast Iron Slide and the load capacity is 50%.



Carriage Dimensions

Size	a	b	c	d	e	f	g	h*	k	l	m	n	o	p	r	s	t	u
1-3	50	39	44.5	28	7	11	17	—	—	M4	M3	M3	10	4	25	—	37.5	—
4-6	75	58	59	43	9	13	21	4	40	M5	M4	M3	12	5.5	25	10	52	—
7-10	100	82	84	68	10	14	24	4	62	M5	M4	M3	15	5.5	25	10	77	—
11-14	150	130	130	103	12	19	30	5	100	M6	M5	M5	20	7.5	50	16	118	—
15-16	200	180	170	143	15	22	35	5	150	M6	M5	M5	20	7.5	50	16	158	—
17-22	300	275	260	221	23	34	50	6	250	M8	M8	M6	20	12	100	16	242	100

* RL, RM, RCL, RCSL, RCSM Model Only



Base Dimensions

RL, RM, RCL, RCM, RCSL, RCSM Models Only

Size	a	b	c	d	e	f	g	h	k	l	m	n	o	p	r
1-3	49.5	42	25	8.5	—	5	7.6	9.3	10	18	15.5	25	M3	—	—
4-6	74.5	58	39	23	12	8	10.5	13.8	15	23	30	25	M3	—	—
7-10	99.5	82	64	48	15	8	12.5	18	19	27	55	25	M3	8	35
11-14	149.50	128	95	68	25	10	19.5	22	23	38	80	50	M5	8	50
15-16	199.5	168	135	108	25	10	22.5	27	28	43	120	50	M5	8	50
17-22	299.5	256	211	172	33	10	24	29	30	52	190	100	M6	10	61