

SP, SL, SM, SCP, SCL, SCM, SCSP, SCSL, SCSM Models

Application	Accurate positioning in machining and inspection operations. Horizontal or vertical operation.
Design Advantages	High static and sliding friction have a vibration dampening effect. Slides have high load carrying capacity.
Slide Construction	Precision ground, stress relieved ASTMA-48 GC35 Cast Iron (CG25) or 361 Aluminium (G-A1). The following surface treatments are available upon request: Cast Iron - Electroless Nickel Plating. Black chrome plating. Aluminium - Black anodized, Hard anodized, Hard coated. Upon Request: Slides with widths starting at 100mm are available with a teflon like coating on the ways to reduce friction. This coating will reduce the co-efficient of friction from 0.10 to 0.05.
Load Capacity	Slide 1 to 29 can carry loads from 51kg to 3328 kg. The weight of the SP Model is from 0.6 kg to 270 kg.
Leadscrew Design	Standard leadscrews are hardened and ground. Pitch accuracy is ± 0.02 mm per 300 mm of travel. Higher accuracy spindles are available upon request.
Maintenance	Little maintenance is required. Periodic adjustment of the gib is required to maintain accuracy of the slide. A lubrication system will reduce wear and friction.
Accessories	Many accessories are available for different applications.
Modification	When modifying slides see page 33 for base and saddle dimensions



SP Model
Plain

SL Model
...With crank handle

SM Model
...With knurled knob

Automation

Automation and Motion Control Products

SCP Model
Fixed compound

SCL Model
...With crank handles

SCM Model
...With Knurled knobs

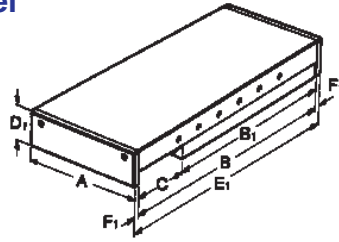
SCSP Model
Swivel compound

SCSL Model
...With crank handles

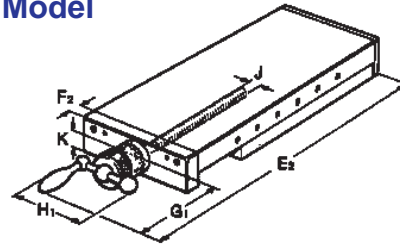
SCSM Model
...With Knurled knobs

Also Available with built in Hydraulic and Pneumatic cylinders, contact Automotion for details

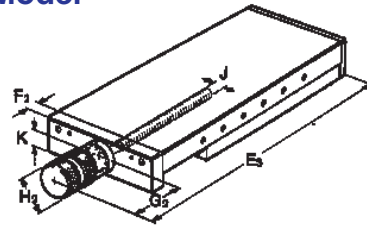
SP Model



SL Model

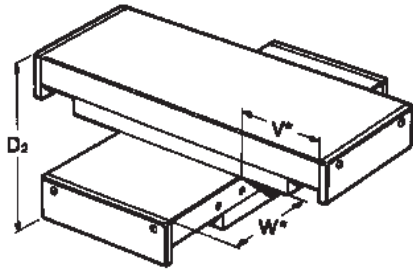


SM Model

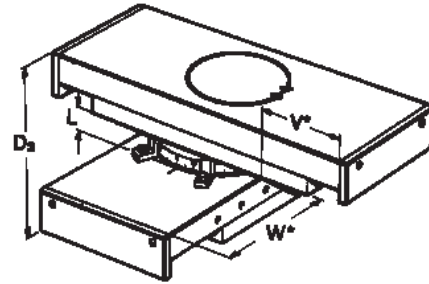


Size	Slide Width A	Saddle Length B	Base Length B ₁	Travel C	Height			Over-All Length Without Bellows			Without Bellows		With Bellows	
					D ₁	D ₂	D ₃	E ₁	E ₂	E ₃	F ₁	F ₂	F ₁	F ₂
1	50	76	50	22	25	50	—	88	156	138	6	14	6	14
2		102	76	25				114	182	164				
3		152	101	50				164	232	214				
4	75	102	76	25	32	64	82	114	193	170	6	15	6	15
5		127	101	25				139	218	195				
6		152	101	50				164	243	220				
7	100	152	126	25	37	74	92	164	243	222	6	15	6	15
8		203	152	50				215	294	273				
9		254	203	50				266	345	324				
10		305	228	75				317	396	375				
11	150	203	152	50	50	100	120	219	334	297	8	16	8	16
12		305	203	100				321	436	399				
13		406	304	100				422	537	500				
14		406	253	150				422	537	500				
15	200	457	304	150	58	116	136	473	588	551	8	16	8	16
16		610	406	200				626	741	704				
17	300	410	308	100	75	150	180	430	607	538	10	20	70	70
18		610	408	200				630	807	738			70	70
19		710	408	300				730	907	838			70	70
20		910	508	400				930	1107	1038			70	70
21		1010	508	500				1030	1207	1138			90	90
22		1210	608	600				1230	1407	1338			100	100
23		400	610	408				200	102	204			244	650
24	710		408	300	750	968	883	70			70			
25	810		408	400	850	1068	983	90			90			
26	910		508	400	950	1168	1083	90			90			
27	1010		508	500	1050	1268	1183	100			100			
28	1110		508	600	1150	1368	1283	100			100			
29	1210		608	600	1250	1468	1383	100			100			

SCP Model



SCSP Model

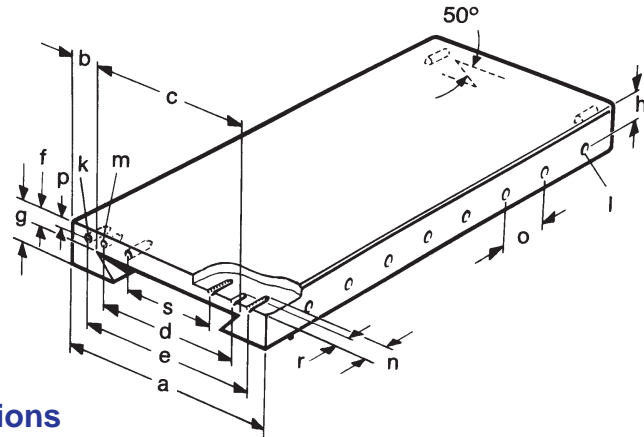


Note: Dimensions V & W unless otherwise specified tables will be positioned about the centre line

Size	G1	G2	H ₁	H ₂ Ø	Leadscrew Thread Size J	K	L	Approx Weight (kg)	Load Capacity (kg)
1								0.6	51
2	60	42	50	23.9	M6x1	12.5	—	0.8	77
3								1.1	103
4								1.8	106
5	70	47	56	31	M8x1	16	18	2	141
6								2.5	141
7								4	200
8	70	49	56	35	M12x1	18	18	4.7	241
9								6.1	322
10								7	361
11								10	316
12	107	70	106	48	M20x1	24.3	20	13.2	422
13								18	633
14								16.5	526
15	107	70	106	48	M20x1	28.3	20	30	861
16								40	1149
17								59	1133
18								80	1501
19	166.5	97.5	125*	68	Tr.26x4	35	30	92	1495
20								110	1863
21								125	1856
22								145	2223
23								169	2239
24								182	2233
25								195	2226
26	208	123	200	84	Tr.32x4	43.5	40	225	2781
27								238	2775
28								251	2768
29								270	3328

* Handwheel used instead of thumbscrew

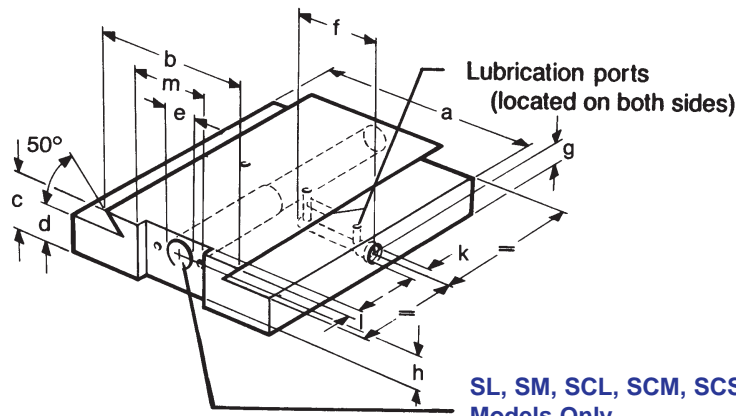
All models are cast in cast iron or Aluminium. Approximate weight and load capacity in the above chart is for model SP Cast Iron Slides. For Aluminium slides, the approximate weight is 55% of the Cast Iron Slide and the load capacity is 50%



Carriages Dimensions

Size	a	b	c	d	e	f	g	h	k	l	m*	n	o	p	r	s
1-3	50	9.5	35	—	42	7	15.5	12	M4	M3	—	12	25	10	—	—
4-6	75	14.5	50	40	58	9	19.5	14	M5	M4	4	12	25	5.5	10	—
7-10	100	16.5	71	62	82	10	21.5	16.5	M5	M4	4	12	25	5.5	10	—
11-14	150	22	114	100	130	12	27.5	19.5	M6	M5	5	20	50	7.5	16	—
15-16	200	30	147	150	180	15	35.5	25.5	M6	M5	5	20	50	7.5	16	—
17-22	300	37	236	250	275	22	50.5	36.5	M8	M8	6	20	70	12	16	100
23-29	400	63	286	300	360	33	66	49	M10	M12	8	22	100	22	20	120

* SL, SM, SCL, SCSL, SCSM Model Only



Base Dimensions

SL, SM, SCL, SCM, SCSL, SCSM Models Only

Size	a	b	c	d	e	f	g	h	kØ	l	m
1-3	49.5	28.5	17.5	9.5	8	—	—	12.5	—	—	—
4-6	74.5	44	22.5	12.5	12	27	6.5	16	11	—	—
7-10	99.5	66	26.5	15.5	15	37	8	18	11	8	35
11-14	149.50	104.4	37.5	22.5	25	45	11	24.3	11	8	50
15-16	199.5	138	42.5	22.5	25	68	11.5	28.3	11	8	50
17-22	299.5	225	52.5	24.5	33	75	13	35	11	10	61
23-29	399.5	268	68	36	45	105	18	43.5	11	15	81