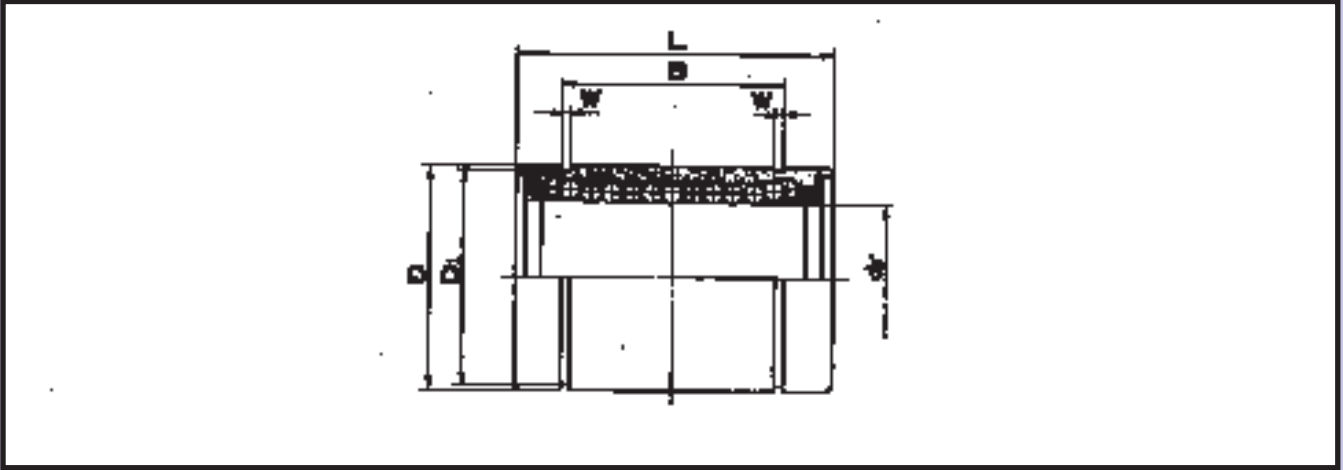


## Steel KB-G (Resin Retainer)



For Stainless Steel material add S to part number. Example KBS-3G  
Bearings also available with steel in place of resin retainer, remove the G from the part number. Example KB-3

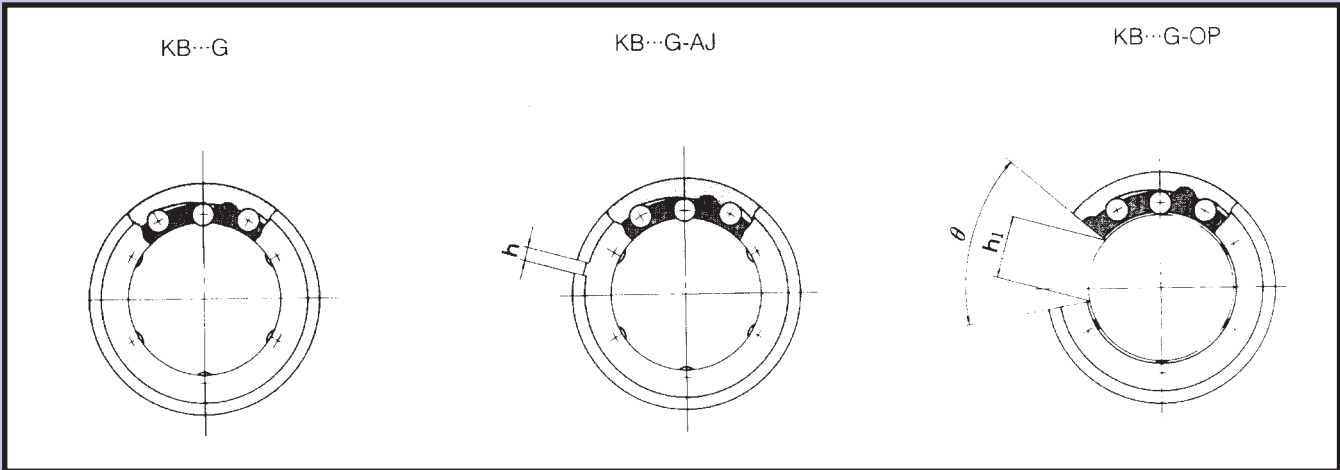
Nominal shaft diameter mm	Part number									dr		
	Resin retainer									mm	Tolerance $\mu\text{m}$	
	KB...G	Ball circuit	Weight g	KB...G-AJ	Ball circuit	Weight g	KB...G-OP	Ball circuit	Weight g		Precision	High
3	KB 3G	4	1.35	-	-	-	-	-	-	3		
4	KB 4G	4	1.9	-	-	-	-	-	-	4		
5	KB 5G	4	11	KB 5G-AJ	4	10	-	-	-	5	-	+8
8	KB 8G	4	20	KB 8G-AJ	4	19.5	-	-	-	8		0
10	KB 10G	4	29.5	KB 10G-AJ	4	29	KB 10G-OP	3	23	10		
12	KB 12G	4	41	KB 12G-AJ	4	40	KB 12 G-OP	3	32	12		
16	KB 16G	4	57	KB 16G-AJ	4	56	KB 16G-OP	3	44	16		+9
20	KB 20G	5	91	KB 20G-AJ	5	90	KB 20G-OP	4	75	20		-1
25	KB 25G	6	215	KB25G-AJ	6	212	KB 25G-OP	5	181	25		+11
30	KB 30G	6	325	KB 30G-AJ	6	320	KB 30G-OP	5	272	30		-1
40	KB 40G	6	705	KB 40G-AJ	6	694	KB 40G-OP	5	600	40		
50	KB 50G	6	1,130	KB 50G-AJ	6	1,110	KB 50G-OP	5	970	50		+13
60	KB 60G	6	2,050	KB 60G-AJ	6	2,000	KB 60G-OP	5	1,580	60		-2

### Seal Type:

#### KB10G-UU-AJ

No entry	No Seals
U	Seal on one side
UU	Seal on both sides

Note: Smaller sizes (3 and 4mm I.D.) are non seal type only



Major dimensions and tolerances											Eccentricity $\mu\text{m}$	Radial clearance (Max.) $\mu\text{m}$	Basic load rating		Nominal Shaft diameter mm
mm	D Tolerance $\mu\text{m}$	mm	L Tolerance $\mu\text{m}$	mm	B Tolerance $\mu\text{m}$	mm	$D_1$ mm	h mm	$h_1$ mm	$\theta$ mm			dynamic C N	static Co N	
7		10	0	-	-	-	-	-	-	-	10		69	105	3
8	0	12	-120	-	-	-	-	-	-	-			88	127	4
12	-8	22		14.5		1.1	11.5	1	-	-	12	-3	206	265	5
16		25		16.5		1.1	15.2	1	-	-			265	402	8
19	0	29	0	22	0	1.3	18	1	6.8	80°	12	-4	372	549	10
22	-9	32	-200	22.9	-200	1.3	21	1.5	7.5	78°			510	784	12
26		36		24.9		1.3	24.9	1.5	10	78°	578	892	16		
32	0	45		31.5		1.6	30.3	2	10	60°	15	-6	862	1,370	20
40	-11	58	0	44.1	0	1.85	37.5	2	12.5	60°			980	1,570	25
47		68		52.1		1.85	44.5	2	12.5	50°	1,570	2,740	30		
62	0	80	-300	60.6	-300	2.15	59	3	16.8	50°	17	-8	2,160	4,020	40
75	-13	100		77.6		2.65	72	3	21	50°			3,820	7,940	50
90		0 -15	125	0 -400	101.7	0 -400	3.15	86.5	3	27.2	54°	20	-13	4,700	9,800

**Steel**

**SMF (Steel Retainer)**

**SMK (Steel Retainer)**

**SMFG (Steel Retainer)**

**SMKG (Steel Retainer)**

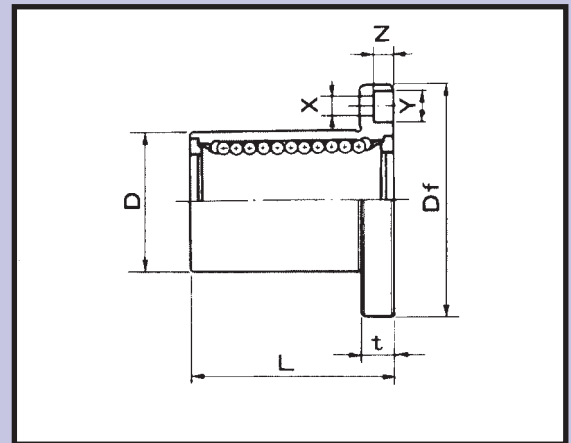
**Stainless Steel**

**SMSF (StainlessSteel Retainer)**

**SMSK (Stainless Steel Retainer)**

**SMSFG (ResinRetainer)**

**SMSKG (ResinRetainer)**

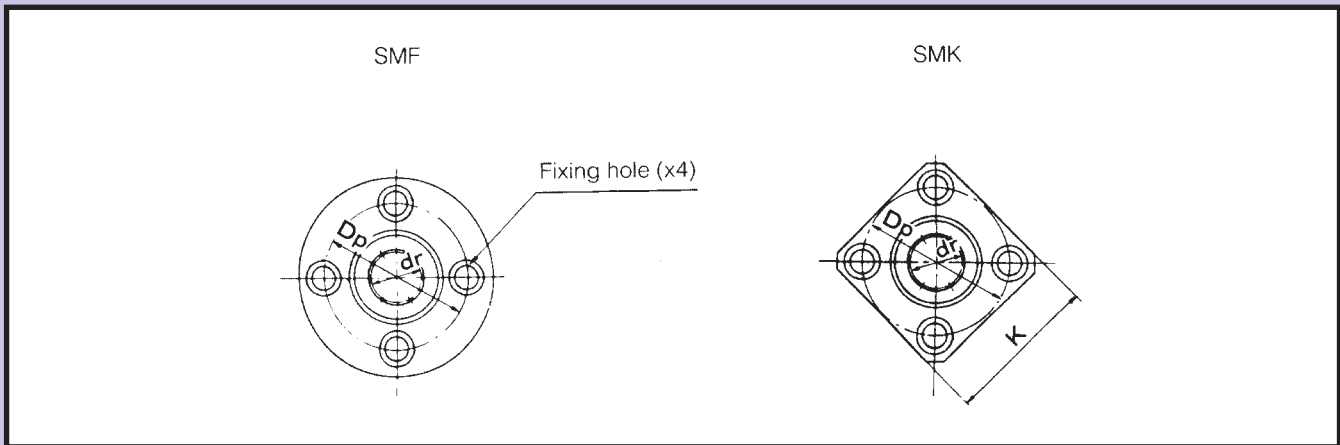


Nominal shaft diameter mm	Part number				dr		D		L	
	Steel		Stainless Steel		mm	Tolerance $\mu\text{m}$	mm	Tolerance $\mu\text{m}$	mm	Tolerance $\mu\text{m}$
	SMF(K)	SMF(K)...G	SMF(K)	SMF(K)...G						
6	SMF 6 SMK 6	SMF 6G SMK 6G	SMSF 6 SMSK 6	SMSF 6G SMSK 6G	6		12	0	19	
8	SMF 8S SMK 8S	SMF 8SG SMK 8SG	SMSF 8S SMSK 8S	SMSF 8SG SMSK 8SG	8		15	-11	17	0
8	SMF 8 SMK 8	SMF 8G SMK 8G	SMSF 8 SMSK 8	SMSF 8G SMSK 8G	8	0	15		24	-200
10	SMF 10 SMK 10	SMF 10G SMK 10G	SMSF 10 SMSK 10	SMSF 10G SMSK 10G	10	-9	19		29	
12	SMF 12 SMK 12	SMF 12G SMK 12G	SMSF 12 SMSK 12	SMSF 12G SMSK 12G	12		21	0	30	
13	SMF 13 SMK 13	SMF 13G SMK 13G	SMSF 13 SMSK 13	SMSF 13G SMSK 13G	13		23	-13	32	0
16	SMF 16 SMK 16	SMF 16G SMK 16G	SMSF 16 SMSK 16	SMSF 16G SMSK 16G	16		28		37	-200
20	SMF 20 SMK 20	SMF 20G SMK 20G	SMSF 20 SMSK 20	SMSF 20G SMSK 20G	20	0	32	0	42	
25	SMF 25 SMK 25	SMF 25G SMK 25G	SMSF 25 SMSK 25	SMSF 25G SMSK 25G	25	-10	40	-16	59	
30	SMF 30 SMK 30	SMF 30G SMK 30G	SMSF 30 SMSK3 0	SMSF 30G SMSK 30G	30		45		64	
35	SMF 35 SMK 35	SMF 35G SMK 35G	SMSF 35 SMSK 35	SMSF 35G SMSK 35G	35	0	52	0	70	0
40	SMF 40 SMK 40	SMF 40G SMK 40G	SMSF 40 SMSK 40	SMSF 40G SMSK 40G	40	-12	60	-19	80	-300
50	SMF 50 SMK 50	SMF 50G SMK 50G	SMSF 50 SMSK 50G	SMSF 50G SMSK 50G	50		80		100	
60	SMF 60 SMK 60	SMF 60G SMK 60G	SMSF 60 SMSK 60	SMSF 60G SMSK 60G	60	0	90	0	110	
80	SMF 80 SMK 80	-	-	-	80	-15	120	-22	140	0
100	SMF 100 SMK 100	-	-	-	100	0 -20	150	0 -25	175	-400

**Seal Type:**

**SMF10-UU**

	No entry	No Seals
UU		Seal on both sides



Major dimensions and tolerances							Eccentricity μm	Squareness μm	Basic load rating		Weight g	Nominal Shaft diameter mm
Flange									dynamic C N	static Co N		
Df mm	K mm	t mm	Dp mm	X mm	Y mm	Z mm						
28	22	5	20	3.5	6	3.1	12	12	206	265	24 18	6
32	25	5	24	3.5	6	3.1			176	216	32 24	8
32	25	5	24	3.5	6	3.1			274	392	37 29	8
40	30	6	29	4.5	7.5	4.1			372	549	72 52	10
42	32	6	32	4.5	7.5	4.1			510	784	76 57	12
43	34	6	33	4.5	7.5	4.1			510	784	88 72	13
48	37	6	38	4.5	7.5	4.1			774	1,180	120 104	16
54	42	8	43	5.5	9	5.1	15	15	882	1,370	180 145	20
62	50	8	51	5.5	9	5.1			980	1,570	340 300	25
74	58	10	60	6.6	11	6.1			1,570	2,740	470 375	30
82	64	10	67	6.6	11	6.1	20	20	1,670	3,140	650 560	35
96	75	13	78	9	14	8.1			2,160	4,020	1,060 880	40
116	92	13	98	9	14	8.1			3,820	7,940	2,200 2,000	50
134	106	18	112	11	17	11.1	25	25	4,700	10,000	3,000 2,560	60
164	136	18	142	11	17	11.1			7,350	16,000	5,800 5,300	80
200	170	20	175	14	20	13.1	30	30	14,100	34,800	10,600 9,900	100