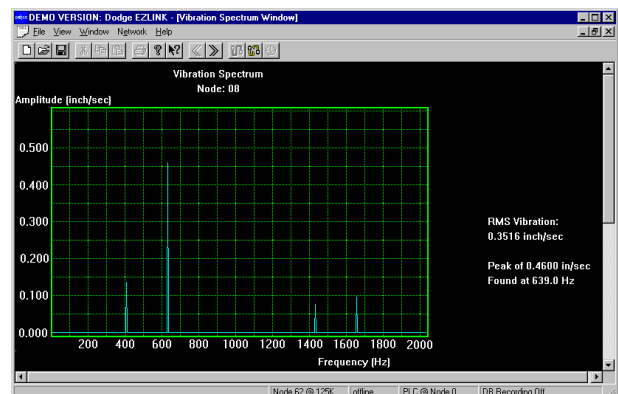
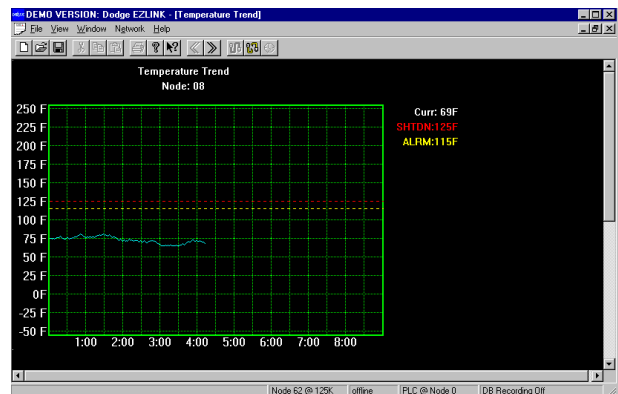
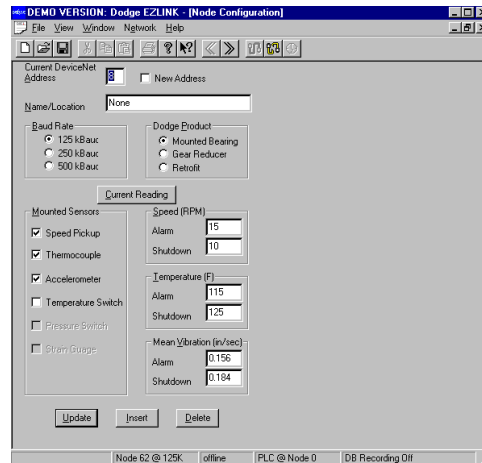


Description

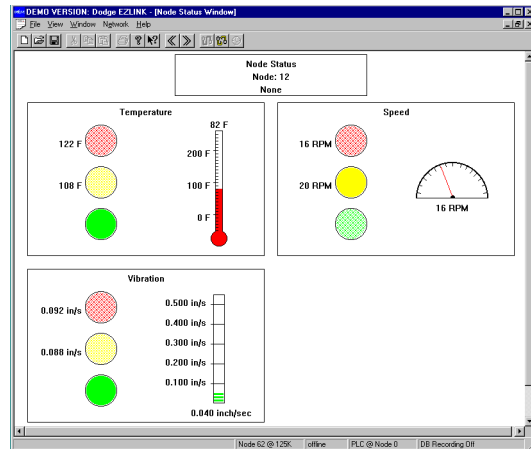
Dodge EZLINK™ Monitor Software is a Microsoft® Windows®-based monitoring system for EZLINK-equipped mechanical power transmission equipment. The EZLINK Monitor software provides access to real time EZLINK module data (Temperature, Vibration, and Speed). EZLINK Monitor software also supports customization of EZLINK module Operational Parameters (Alarm Limits, DeviceNet Address, Baud Rate, etc.) to specific applications. The trending and FFT plots in EZLINK Monitor software facilitate preventative maintenance of mechanical power transmission equipment.

Overall Benefits

- Intuitive configuration tool for EZLINK modules.* EZLINK Monitor software provides point-and-click configuration for the most commonly used EZLINK module parameters. Quickly change addresses on the network, update the sensor list to include field installed sensors, or tweak alarm limits for your process.
- Database Interface.* A database interface is included in the EZLINK Monitor software for long-term trending. By recording data at user defined intervals from once per minute to once per day to a Microsoft Access database, EZLINK Monitor software enables the user to create trends over months or quarters with any ODBC compliant database (e.g., Access, Excel, dBase, and FoxPro).
- Temperature and Vibration Trending.* Temperature and Vibration trending are built into the EZLINK Monitor software. The trend charts display historical data, current temperature or vibration, and alarm limits. Trend chart time scales may be changed to suit the user's needs.
- Vibration Spectrum.* EZLINK Monitor software collects vibration samples from EZLINK modules and performs an FFT analysis of the sample at the click of a button. By looking at the frequency content of the vibration users can quickly identify abnormal vibration that could cause a problem for the mechanical power transmission equipment.



- Graphical Displays for All Readings.*
 EZLINK Monitor software provides intuitive graphical representation of readings such as a thermometer used to represent temperature. Each display includes red, yellow, and green “stop lights” that show the relationship of the current reading to the corresponding alarm limits. Together the graphics provide off-the-shelf MMI support.



- Network Status At-A-Glance.*
 The Network Status screen of the EZLINK Monitor software package provides the status of all EZLINK nodes on the network at a glance. With color-coded text the user can quickly identify which mechanical equipment may be in danger of failure and why it may fail.

Node	Name	Temperature	Speed	Vibration	Pressure
8	None	79 F	24 RPM	0.040 in/s	N/A
12	None	78 F	17 RPM	0.040 in/s	N/A
16	None	76 F	N/A	0.040 in/s	N/A

Features

- Intuitive Human-Machine Interface.
- Industry-standard FFT algorithm for vibration analysis.
- Scalable time-based trending for temperature and mean vibration level.
- ODBC-compliant database interface.
- Two “over temperature” alarm settings.
- Two “high vibration” alarm settings.
- Two “under speed” alarm settings.

Recommended PC Configuration

- IBM-compatible Personal Computer with 486/66 MHz or greater
- Microsoft Windows 95
- 16 MB RAM
- 2 MB Hard Disk Space
- 800x600 resolution SVGA Graphics
- WinDNet Compatible DeviceNet Interface

Part Number

EZLINK Monitor Software -- Dodge Part 063750

For More Information

For more information on the latest pricing and product development in Dodge Smart Products please contact your local Rockwell Automation/Dodge distributor or sales office.