

CONTENTS

DODGE Plummer Blocks

Features/Benefits	B10-2
How To Order/Nomenclature	B10-5
Selection	B10-14
Part Number Index	INDEX-1
Keyword Index	INDEX-28

FEATURES/BENEFITS

DODGE Plummer Blocks



SSN Series

Split plummer block housings are the most commonly used blocks in manufacturing, mining and construction industries for mounting self-aligning ball or spherical roller bearings with adapter sleeves or cylindrical bores. SSN housings are equivalent to the SN types in the main dimensions. The housing lower body is cast solid on both sides at the feet outer ends. If required, the housings can be supplied with two or four bolt holes. This housing variation is standard in ductile iron, but also available in cast steel.

The bearing seats of the SSN housings are machined to H7 tolerances. Dodge split plummer blocks can be used as floating bearings to allow axial movement of the bearing. Dimensional and fitting inaccuracies, as well as variations in shaft lengths due to thermal expansion, can thus be compensated. Fixed bearings incorporate locating rings. The rings, matching a particular bearing used, are shown separately in the housing tables.

The plummer block housings are primarily equipped with felt seals. The required felt seals are supplied complete with the housings and therefore do not need to be ordered separately. It should be noted, that before assembly, the felt seals should be placed in hot oil for a few minutes in order to obtain optimum seal life.

Other types of seals are available for special applications enabling the engineer to select the optimum sealing solution.

Dodge split SSN plummer block housings are intended for grease lubrication.

For housings requiring a closed end, end covers are available. Further information is available on request.

Housing dimensions are in accordance with the standards DIN 736, 737, 738, 739 and ISO/R 113.



SD 3100 Series

These housings are used with the larger 23100 K series spherical roller bearings. They have special labyrinth seals and "O" rings inserted between the labyrinth seal and shaft ensuring that the labyrinth seal rotates with the shaft. The new TTS seal, as described above, is also available.

For closed end housings, we supply a cover plate in place of one of the labyrinth seals.

On request, the housings can also be machined for oil lubrication. Connections for oil lubrication are provided in both halves of the housing.

The bearing seat in the housing is machined to H 7 tolerance.

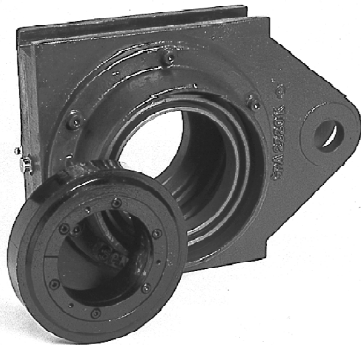
FEATURES/BENEFITS

DODGE Plummer Blocks



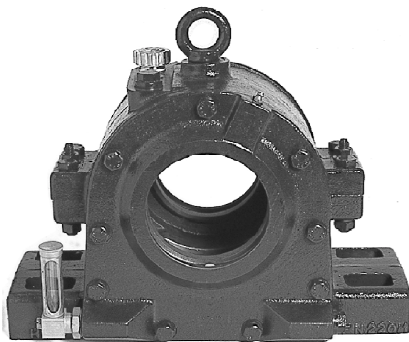
HBND Series

HBND series one-piece housings are made standard of cast steel. Effective sealing is obtained by means of multiple labyrinth rings or labyrinth covers. The labyrinth rings are fixed to the shaft by means of a locking device. The mounted spherical roller bearings are grease lubricated.



HSPA Series

HSPA take-up housings are one-piece cast steel with end cover and labyrinth rings. The housings are guided by means of guide rails in the conveyor framework. The take-up units are mainly supplied with fixed bearings. Shaft or support structure axial tension is equalized by the clearance between the rails and housing guides.

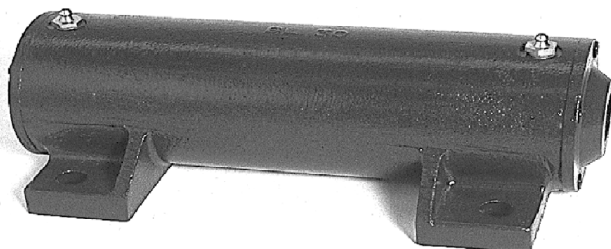


HFO, HFOE Series

HFO and HFOE plummer block housings with oil conveying ring lubrication are used with 22200, 22300, 22200K and 22300K series spherical roller bearings. They have labyrinth seals and are available with or without end covers and with fixed or floating bearing option.

Lubrication is conveyed to bearing by means of a rotating oil conveying ring (oil sump lubrication). An oil level gauge is supplied with all housings for accurate fill levels.

HFO and HFOE housing are suitable for applications where reliability and long, maintenance free, intervals are required; e.g. for fans, blowers and emergency generator sets.



PDFN and BLO..A Series

These Solid housings, especially developed for fan applications, incorporate two bearing seats. Due to this arrangement, misalignment is virtually excluded. PDFN series is grease lubricated. Maintenance is simplified due to grease lubrication discs fixed on one side of each bearing.

Housings of the series PDFN and BLO..A are supplied without bearings and shaft. They can be shipped, however as complete mounted units upon request. Housings of the series BL-W kpl are delivered as complete mounted units with fitted bearings and shaft.

Series BLO..A is designed for oil lubrication. The BLO..A series housings are of heavier construction than the PDFN series housings. They have been designed for heavier duty service.

HOW TO ORDER/ NOMENCLATURE



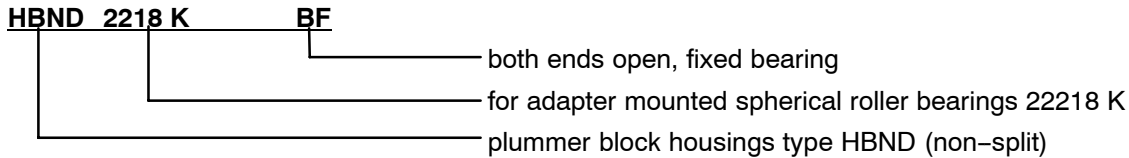
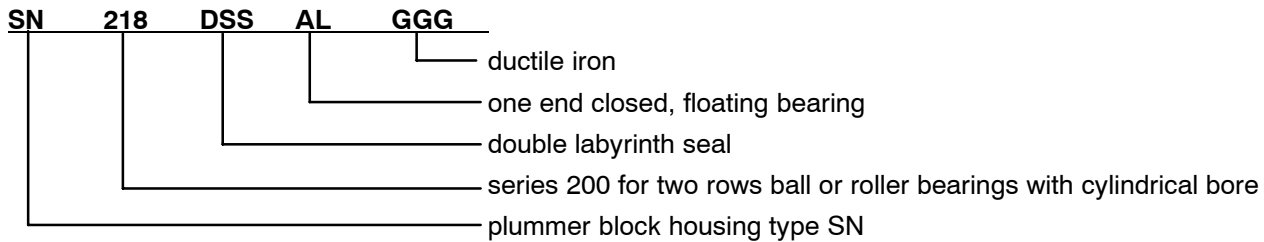
DODGE Plummer Blocks

HOW TO ORDER

Suffixes used for Dodge housings and their meaning

- 2 FL 2 bolt holes (SSN housings)
- 4 FL 4 bolt holes (SSN housings)
- A one end closed
- B both ends open
- DSS double labyrinth seal
- F non-expansion
- GG cast iron GG 20–25
- GGG ductile iron GGG 40
- GS cast steel GS 45
- L non-expansion
- R grease regulation with a lubrication hole in the upper body, a machined grease exit opening in the opposite side of the lower part and equipped with a regulator disc of a cast material
- TAC Taconite seal
- TS single labyrinth seal with TS-Ring
- TTS Triple-Tect
- V grease regulation with a lubrication hole in the upper body, a machined grease exit opening in the opposite side of the lower part and equipped with a regulator disc of steel plate
- VS grease regulation with a lubrication hole in the upper body and a grease overflow hole in the opposite side of the lower part

NOMENCLATURE



FEATURES/BENEFITS PAGE B10-2	SELECTION PAGE B10-10	DIMENSIONS PAGE B10-14	
---------------------------------	--------------------------	---------------------------	--

DODGE Plummer Blocks

RADIAL AND THRUST FACTORS FOR SPHERICAL BEARINGS 22200K, 23000K, 23100K

Shaft Size (MM)	Bearing Series	e	FA/FR _{≤e}		FA/FR _{>e}		Adapter Max. Allowable Thrust Load* KN	Dynamic Capacity KN	Max RPM	
			X	Y	X	Y			Grease	Oil
35	22208K	0.28	1	2.4	0.67	3.6	2.8	93	6000	7500
40	22209K	0.26	1	1	0.67	3.9	3.1	93	5600	7000
45	22210K	0.24	1	2.8	0.67	4.2	3.4	98	5300	6700
50	22211K	0.23	1	2.9	0.67	4.4	4.1	120	4500	5600
55	22212K	0.24	1	2.8	0.67	4.2	5	146	4000	5000
60	22213K	0.24	1	2.8	0.67	4.2	6	169	3800	4500
65	22215K	0.22	1	3.1	0.67	4.6	7	185	3400	4300
70	22216K	0.22	1	3.1	0.67	4.7	8	207	3200	4000
75	22217K	0.22	1	3	0.67	4.5	9.2	260	3000	3800
80	22218K	0.23	1	2.9	0.67	4.3	10.8	285	2600	3400
85	22219K	0.24	1	2.9	0.67	4.3	12.2	325	2400	3200
90	22220K	0.24	1	2.8	0.67	4.2	13.8	356	2200	3000
100	22222K	0.25	1	2.7	0.67	4	17.5	454	2000	2800
110	22224K	0.25	1	2.7	0.67	4	20.9	534	1900	2400
115	22226K	0.26	1	2.6	0.67	3.9	25	636	1800	2200
125	22228K	0.25	1	2.7	0.67	4	28.5	738	1700	2200
	23028K	0.22	1	3.1	0.67	4.6	22.2	480	1900	2600
135	22230K	0.25	1	2.7	0.67	4	32.8	845	1600	2000
	23030K	0.22	1	3.1	0.67	4.6	25.2	524	1800	2400
140	22232K	0.26	1	2.6	0.67	3.9	38.4	961	1500	1800
	23032K	0.22	1	3.1	0.67	4.6	28.8	609	1600	2000
	23132K	0.29	1	2.3	0.67	3.5	41.3	978	1300	1700
150	22234K	0.26	1	2.6	0.67	3.9	43.8	1112	1300	1700
	23034K	0.23	1	3	0.67	4.4	34.2	738	1500	1900
	23134K	0.28	1	2.4	0.67	3.5	44.8	1032	1300	1700
160	22236K	0.25	1	2.7	0.67	4	46.4	1134	1200	1600
	23036K	0.23	1	2.9	0.67	4.3	40	871	1400	1800
	23136K	0.29	1	2.3	0.67	3.5	52	1201	1200	1600
	23236K	0.33	1	2.1	0.67	3.1	60.5	1445	1100	1500
170	22238K	0.28	1	2.4	0.67	3.6	52.4	1201	950	1300
	23038K	0.23	1	3	0.67	4.4	42.7	907	1300	1700
	23138K	0.3	1	2.3	0.67	3.4	59	1356	1100	1500
180	22240K	0.29	1	2.3	0.67	3.5	58.8	1334	900	1200
	23040K	0.23	1	2.9	0.67	4.3	49.2	1067	1300	1700
	23140K	0.35	1	2	0.67	2.9	67	1334	900	1200
200	22244K	0.29	1	2.3	0.67	3.5	71.3	1623	800	1000
	23044K	0.26	1	2.6	0.67	3.8	59.4	1089	900	1200
	23144K	0.33	1	2	0.67	3	79	1623	800	1000
220	22248K	0.29	1	2.3	0.67	3.5	86.4	1957	700	900
	23048K	0.25	1	2.7	0.67	4.1	66	1156	800	1000
	23148K	0.33	1	2.1	0.67	3.1	92	1846	750	950
240	23052K	0.26	1	2.6	0.67	3.9	81	1534	700	900
	23152K	0.33	1	2	0.67	3	88.9	2179	670	850
	23252K	0.34	1	1.8	0.67	2.7	135.7	2913	630	800
260	23056K	0.25	1	2.7	0.67	4.1	89	1534	700	900
	23156K	0.32	1	2.1	0.67	3.2	122.6	2357	630	800
280	22260K	0.27	1	2.5	0.67	3.7	126	2758	560	700
	23060K	0.25	1	2.7	0.67	4	106	1957	630	800
	23160K	0.33	1	2.1	0.67	3.1	144	2669	600	750
	23260K	0.37	1	1.8	0.67	2.7	172.8	3469	560	700
300	23164K	0.34	1	2	0.67	2.9	169	3202	530	670
320	23068K	0.25	1	2.7	0.67	4	136	2357	560	700
	23168K	0.34	1	2	0.67	2.9	193.8	3692	500	630
	23268K	0.38	1	1.8	0.67	2.7	228	4448	480	600
340	23072K	0.25	1	2.7	0.67	4.1	144.5	2446	530	670
	23272K	0.38	1	1.8	0.67	2.7	250	4893	450	560
360	23076K	0.24	1	2.8	0.67	4.1	154	2535	500	630
	23176K	0.32	1	2.1	0.67	3.2	221	4070	450	560
	23276K	0.37	1	1.8	0.67	2.7	273	5249	430	530

* If the thrust loads exceed maximum allowable thrust load, auxiliary methods of carrying thrust are required.

FEATURES/BENEFITS PAGE B10-2	SELECTION PAGE 5	DIMENSIONS PAGE B10-14	
---------------------------------	---------------------	---------------------------	--

DODGE Plummer Blocks

SELECTION TABLE FOR 23000 SERIES SPHERICAL ROLLER BEARINGS

SHAFT SIZE (MM)	BEARING SERIES	L10 LIFE HOURS	ALLOWABLE EQUIVALENT RADIAL LOAD RATING (KN) AT VARIOUS RPM.*										
			50	100	250	500	750	1000	1300	1500	1800	2000	2400
125	23028K	10000	173.2	140.7	106.9	86.8	76.9	70.5	65.2	62.4	59.1	57.3	54.2
		30000	124.6	101.2	76.9	62.4	55.3	50.7	46.9	44.9	42.5	41.2	39.0
		60000	101.2	82.2	62.4	50.7	44.9	41.2	38.1	36.5	34.5	33.5	31.7
135	23030K	10000	189.2	153.7	116.7	94.8	84.0	77.0	71.2	68.2	64.6	62.6	59.2
		30000	136.1	110.5	84.0	68.2	60.4	55.4	51.2	49.1	46.4	45.0	42.6
		60000	110.5	89.8	68.2	55.4	49.1	45.0	41.6	39.8	37.7	36.5	34.6
140	23032K	10000	219.7	178.4	135.5	110.1	97.5	89.4	82.7	79.2	75.0	72.6	
		30000	158.0	128.3	97.5	79.2	70.1	64.3	59.4	56.9	53.9	52.2	
		60000	128.3	104.2	79.2	64.3	56.9	52.2	48.3	46.3	43.8	42.4	
150	23034K	10000	266.2	216.2	164.2	133.4	118.1	108.4	100.1	95.9	90.8		
		30000	191.4	155.5	118.1	95.9	85.0	77.9	72.0	69.0	65.3		
		60000	155.5	126.3	95.9	77.9	69.0	63.3	58.5	56.0	53.1		
160	23036K	10000	314.3	255.3	193.9	157.5	139.5	127.9	118.2	113.3	107.2		
		30000	226.0	183.6	139.5	113.3	100.3	92.0	85.0	81.5	77.1		
		60000	183.6	149.1	113.3	92.0	81.5	74.7	69.1	66.2	62.7		
170	23038K	10000	327.1	265.7	201.8	163.9	145.2	133.2	123.1	117.9			
		30000	235.2	191.1	145.2	117.9	104.4	95.8	88.5	84.8			
		60000	191.1	155.2	117.9	95.8	84.8	77.8	71.9	68.9			
180	23040K	10000	384.8	312.6	237.4	192.9	170.8	156.7	144.8	138.7			
		30000	276.8	224.8	170.8	138.7	122.8	112.7	104.1	99.8			
		60000	224.8	182.6	138.7	112.7	99.8	91.5	84.6	81.0			
200	23044K	10000	392.8	319.1	242.4	196.9	174.3	159.9					
		30000	282.5	229.5	174.3	141.6	125.4	115.0					
		60000	229.5	186.4	141.6	115.0	101.8	93.4					
220	23048K	10000	416.7	338.5	257.1	208.8	184.9	169.6					
		30000	299.7	243.4	184.9	150.2	133.0	122.0					
		60000	243.4	197.7	150.2	122.0	108.0	99.1					
240	23052K	10000	553.0	449.1	341.2	277.1	245.4						
		30000	397.7	323.0	245.4	199.3	176.5						
		60000	323.0	262.4	199.3	161.9	143.4						
260	23056K	10000	553.0	449.1	341.2	277.1	245.4						
		30000	397.7	323.0	245.4	199.3	176.5						
		60000	323.0	262.4	199.3	161.9	143.4						
280	23060K	10000	705.4	573.0	435.3	353.6	313.1						
		30000	507.4	412.1	313.1	254.3	225.2						
		60000	412.1	334.7	254.3	206.5	182.9						
320	23068K	10000	849.6	690.1	524.2	425.8							
		30000	611.1	496.3	377.0	306.3							
		60000	496.3	403.2	306.3	248.8							
340	23072K	10000	881.7	716.2	544.0	441.9							
		30000	634.1	515.1	391.3	317.8							
		60000	515.1	418.4	317.8	258.2							
360	23076K	10000	913.8	742.2	563.8	458.0							
		30000	657.2	533.8	405.5	329.4							
		60000	533.8	433.6	329.4	267.5							

NOTE: Light shaded areas require oil lubrication when applicable.

FEATURES/BENEFITS PAGE B10-2	SELECTION PAGE 5	DIMENSIONS PAGE B10-14	
---------------------------------	---------------------	---------------------------	--

EASY SELECTION



DODGE Plummer Blocks

SELECTION TABLE FOR 23100 SPHERICAL ROLLER BEARINGS

SHAFT SIZE (MM)	BEARING SERIES	L10 LIFE HOURS	ALLOWABLE EQUIVALENT RADIAL LOAD RATING (KN) AT VARIOUS RPM.*										
			50	100	250	500	650	750	1000	1100	1300	1500	1700
140	23132K	10000	352.8	286.5	217.7	176.8	163.4	156.6	143.6	139.6	132.7	127.2	122.5
		30000	253.7	206.1	156.6	127.2	117.5	112.6	103.3	100.4	95.5	91.5	88.1
		60000	206.1	167.4	127.2	103.3	95.5	91.5	83.9	81.5	77.5	74.3	71.5
150	23134K	10000	372.0	302.2	229.5	186.4	172.3	165.1	151.4	147.2	140.0	134.1	129.2
		30000	267.6	217.3	165.1	134.1	123.9	118.7	108.9	105.8	100.7	96.4	92.9
		60000	217.3	176.5	134.1	108.9	100.7	96.4	88.5	86.0	81.8	78.3	75.4
160	23136K	10000	432.9	351.6	267.1	217.0	200.6	192.1	176.2	171.3	162.9	156.1	
		30000	311.4	252.9	192.1	156.1	144.2	138.2	126.8	123.2	117.2	112.2	
		60000	252.9	205.4	156.1	126.8	117.2	112.2	103.0	100.1	95.2	91.2	
170	23138K	10000	488.8	397.0	301.6	245.0	226.4	216.9	199.0	193.4	183.9	176.2	
		30000	351.6	285.5	216.9	176.2	162.9	156.0	143.1	139.1	132.3	126.7	
		60000	285.5	231.9	176.2	143.1	132.3	126.7	116.2	113.0	107.4	102.9	
180	23140K	10000	480.9	390.6	296.7	241.0	222.8	213.4	195.8	190.2			
		30000	345.8	280.9	213.4	173.3	160.2	153.5	140.8	136.8			
		60000	280.9	228.2	173.3	140.8	130.1	124.7	114.4	111.1			
200	23144K	10000	585.0	475.2	361.0	293.2	271.0	259.6	238.2				
		30000	420.8	341.8	259.6	210.9	194.9	186.7	171.3				
		60000	341.8	277.6	210.9	171.3	158.3	151.7	139.1				
220	23148K	10000	665.4	540.5	410.6	333.5	308.3	295.3					
		30000	478.6	388.7	295.3	239.9	221.7	212.4					
		60000	388.7	315.8	239.9	194.8	180.1	172.5					
240	23152K	10000	785.5	638.0	484.7	393.7	363.9	348.6					
		30000	564.9	458.9	348.6	283.1	261.7	250.7					
		60000	458.9	372.7	283.1	230.0	212.6	203.6					
260	23156K	10000	849.6	690.1	524.2	425.8	393.6	377.0					
		30000	611.1	496.3	377.0	306.3	283.1	271.2					
		60000	496.3	403.2	306.3	248.8	229.9	220.3					
280	23160K	10000	962.1	781.5	593.6	482.2	445.7	427.0					
		30000	692.0	562.0	427.0	346.8	320.5	307.1					
		60000	562.0	456.5	346.8	281.7	260.4	249.4					
300	23164K	10000	1154.2	937.5	712.2	578.5	534.7						
		30000	830.1	674.3	512.2	416.1	384.6						
		60000	674.3	547.7	416.1	337.9	312.4						
320	23168K	10000	1330.9	1081.0	821.2	667.0	616.6						
		30000	957.2	777.5	590.6	479.8	443.4						
		60000	777.5	631.5	479.8	389.7	360.2						

NOTE: Light shaded areas require oil lubrication when applicable.

FEATURES/BENEFITS PAGE B10-2	SELECTION PAGE 5	DIMENSIONS PAGE B10-14	
---------------------------------	---------------------	---------------------------	--

DODGE Plummer Blocks

SSN, SD3100, HBND, HFO AND HFOE MAXIMUM AXIAL EXPANSION

Shaft Size (MM)	TOTAL EXPANSION CAPABILITY				
	SSN (MM)	SD3100 (MM)	HBND (MM)	HFO 5 (MM)	HFOE 5 (MM)
35	10				
40	8				
45	10				
50	8		4		
55	10				
60	12		4		
65	10		4		
70	10		4		
75	10			10	20
80	10		4	10	20
85				10	20
90	10		5	10	20
100	10		5	10	20
110	10		5	16	20
115	10		6	16	20
125	10		6	16	20
135	10		6	16	20
140	10		6	20	20
150		20	6	20	20
160		20	6	20	20
170		20	6		20
180		20	8	24	20
200		20	6	24	20
220		20	8		20
240		20	8		
260		20	8		
280		20	8		
300		20	8		
320			10		
340			10		
360			14		

NOTE: Expansion values listed are representative of 222 (or 231 where applicable) spherical roller bearings. These values can be obtained if the pillow block is shifted completely to one side relative to the bearing. If bearing is positioned in the center of the pillow block only half the total expansion is applicable.

SELECTION

Plummer Block Housings

All standard housing material is ASTM A48 Class 30 cast iron. Optional ductile iron housings have over twice the tensile strength of standard housings and offer outstanding resistance to cold temperatures. Ductile iron is an economical alternative to steel. Minimum release quantities are required for ductile housings. To order, specify “ductile housing” at the end of the description. Order by description or reference standard part number followed by “except with ...”.

SPECIAL DRILLING

The standard offering includes a W33 lube hole and fitting, along with a cap vent hole. Holes may be drilled to meet customer specifications for lube, vent and sensor locations. Order by description instead of part number. A minimum quantity may be required.

SPECIAL FINISHES

A variety of finishes are available for extra corrosion resistance. The standard finish is a water based U.S.D.A. approved paint. When special finishes are specified, DODGE recommends the use of stainless steel cap bolts and grease fittings. To order, specify the “type of finish” required and “stainless bolts and fittings” at the end of the description. Order by description for special finishes. A minimum quantity may be required.

BEARINGS

Standard bearings offered are 22200, 23000 and 23100 series metal caged, double row, spherical bearings with C3 clearance in both direct and adapter mounts. Other clearance bearings are available as options, i.e. C0, C4 and C5. Other double row spherical bearing series are available on request including 23200 in both direct and adapter mount. Self aligning ball bearing series 1200, 1300 and 2200 in both adapter and direct mount are available on request. To order, specify bearing series and clearance at the end of the description.

OTHER MODIFICATIONS NOT LISTED

For applications requiring modifications not listed, we encourage you to contact our Application Engineering Department for Bearings at 864-297-4800, or FAX 864-281-2317. Operating hours are 8:00 a.m. to 5:00 p.m., Monday through Friday Eastern Standard Time.

FEATURES/BENEFITS PAGE B10-2	SELECTION PAGE B10-10	DIMENSIONS PAGE B10-14	
---------------------------------	--------------------------	---------------------------	--

SELECTION

Metric Plummer Block Spherical Roller Bearings

DODGE Metric Spherical Roller Bearings have the capacity to carry heavy radial loads and combined radial and thrust loads. The maximum recommended load which can be applied is limited by various components in the system such as bearing, housing, shaft, shaft attachment, speed and life requirements as listed in this catalog.

DODGE Spherical Roller Bearings have been applied successfully even when these limits have been exceeded under controlled operating conditions. Contact DODGE Application Engineering (864-297-4800 or FAX 864-281-2317) for applications which exceed the recommendations of this catalog.

L₁₀ Hours Life — The fatigue life which may be expected from at least 90% of a given group of bearings operating under identical conditions.

$$L_{10} \text{ Life, Hours} = \left(\frac{C}{P}\right)^{10/3} \times \left(\frac{16667}{\text{RPM}}\right)$$

Where:

C = Dynamic Capacity (page B10-5), kN

P = Equivalent Radial Load, kN

(See Equation 1 on page B10-13 for definition of P.)

GENERAL

Heavy Service — For heavy shock loads, frequent shock loads, or severe vibrations, increase the Equivalent Radial Load up to 50% (according to severity of conditions) to obtain a Modified Equivalent Radial Load. Consult DODGE Application Engineering for additional selection assistance.

Thrust load values shown in the table below are recommended as a guide for general applications that will give adequate L₁₀ life. Spherical bearings require a radial load

at least equal to the thrust load for proper operation. If the thrust load exceeds this limit, consult DODGE Application Engineering. With substantial radial loads present, it is advisable to calculate actual L₁₀ life to assure that the bearing meets requirements.

RPM RANGE	20-200	201-2000	over 2000
RECOMMENDED THRUST LOAD	C/20*	C/40*	C/60*

The shaft tolerances recommended below are appropriate for adapter mounted bearings. Since the allowable load, especially at a low speed, is very large, the shaft should be checked to assure adequate shaft strength.

The magnitude and direction of both the thrust and radial load must be taken into account when selecting a housing. Under a cap load condition, both the hold-down bolts and housing must be of adequate strength. Auxiliary load devices such as shear bars are advisable for side or end loading of plummer blocks.

NOTE: Spherical bearings require a radial load at least equal to the thrust load for proper operation ($F_A/F_R = 1$). If the thrust load exceeds this limit, consult Application Engineering.

SHAFT TOLERANCES

SHAFT SIZE, MM	TOLERANCE, MM
Up to 40	+ .000 - .051
Over 40 to 65	+ .000 - .076
Over 65 to 100	+ .000 - .101
Over 100 to 150	+ .000 - .127
Over 150	+ .000 - .152

* Use the smaller of this value or the maximum allowable thrust load F_A listed in the Table on page B10-5.

FEATURES/BENEFITS PAGE B10-2	SELECTION PAGE B10-10	DIMENSIONS PAGE B10-14	
---------------------------------	--------------------------	---------------------------	--

SELECTION

Selecting Bearings Supporting Radial Loads Only

1. Define the L_{10} Life desired, in Hours.
2. Establish bearing radial load, F_R , kN.
 $F_R = P$ for Pure Radial Load Conditions
 $P =$ Equivalent radial load, kN
 (The DODGE program BEST can be used to find application loads.)
3. Establish RPM.

Using the easy selection Tables (pages B10-6 - B10-8) under the RPM column, find the equivalent radial load that equals or is slightly higher than the application radial load for the desired life. The shaft size on the far left will be the minimum shaft size that you can use for your application. If the desired life is different than the values shown on the chart, use alternate Method A shown below.

- Example:
1. L_{10} Life = 30,000 Hours
 2. Radial load = 18 kN
 3. RPM = 1000

In the table on page B10-6, at the intersection of the 1000 RPM column and the 30,000 hours L_{10} life row, the equivalent radial load of 19.5 kN exceeds the 18 kN application radial load for shaft size 65 mm adapter mount (22215K series bearing). Therefore, the following bearing can be

used to meet the application conditions of the above example:

1. 65 mm adapter mount 22215K bearing

ALTERNATE METHOD A — SELECTING A BEARING FOR AN L_{10} LIFE VALUE NOT SHOWN IN THE EASY SELECTION CHART.

The L_{10} life equation can be rearranged so that the bearing dynamic capacity C is identified in terms of L_{10} , RPM and P .

$$C = \left(\frac{L_{10} \times \text{RPM}}{16667} \right)^{0.3} \times P$$

($P = F_R =$ Equivalent Radial Load)

Since the L_{10} , RPM, and F_R are known, solve for C . Select from the dynamic capacity column on the table on page B10-5, the C value equal to or just greater than the C value just calculated. The bore size on the far left represents the minimum shaft size selection. Check that the application RPM does not exceed the MAX. RPM on the table on page B10-5. When selecting an L_{10} life of less than 30,000 hours, particular attention must be given to shaft deflection and proper lubricant selection.

- The DODGE Bearing Evaluation and Selection Technique (BEST) is a menu driven computer program that calculates bearing loads, fatigue life and operating temperature for a two bearing shaft system based on user supplied input parameters.

FEATURES/BENEFITS PAGE B10-2	SELECTION PAGE B10-10	DIMENSIONS PAGE B10-14	
---------------------------------	--------------------------	---------------------------	--

SELECTION

Selecting Bearings Supporting Both Radial And thrust Loads

When a bearing supports both a radial load and a thrust load, the loading on the two rows is shared unequally depending on the ratio of thrust to radial load. The use of the X (radial factor) and Y (thrust factor) from the table on page B10-5, converts the applied thrust load and radial loads to an equivalent radial load having the same effect on the life of the bearing as a radial load of this magnitude.

Equation 1

The equivalent radial load $P = XF_R + YF_A$

Where:

- P = Equivalent radial load, kN
- F_R = Radial load, kN
- F_A = Thrust (axial) load, kN
- e = Thrust load to radial load factor (page B10-5)
- X = Radial load factor (page B10-5)
- Y = Thrust load factor (page B10-5)

Calculate F_A/F_R and compare to **e** value for the selected bore size. Determine X and Y from the table on page B10-5 depending on whether F_A/F_R is equal to or less than **e**, or F_A/F_R is greater than **e**. Substitute all known values into the equivalent radial load equation. P (equivalent radial load) can be used in the life formula to determine L_{10} life in hours, or it can be compared to the allow-

able equivalent radial load ratings for the speed and hours life desired in the easy selection tables on pages B10-6 - B10-8

SELECTING BEARINGS SUPPORTING ONLY THRUST LOADS

Spherical Roller Bearings generally are not recommended for pure thrust load applications. They will perform satisfactorily under very light pure thrust loads. Consult DODGE Application Engineering (864-297-4800).

AXIAL EXPANSION CAPABILITY

Axial expansion capability for SSN and SD3100 is based upon a stabilizing (fixing) ring. Unlike the UNIFIED spherical roller bearing housings, not every SSN or SD3100 housing will be provided with the appropriate stabilizing ring. The part number for each housing will indicate a fixed or floating housing. Six digit part numbers for standard housings are listed in the back of each product section.

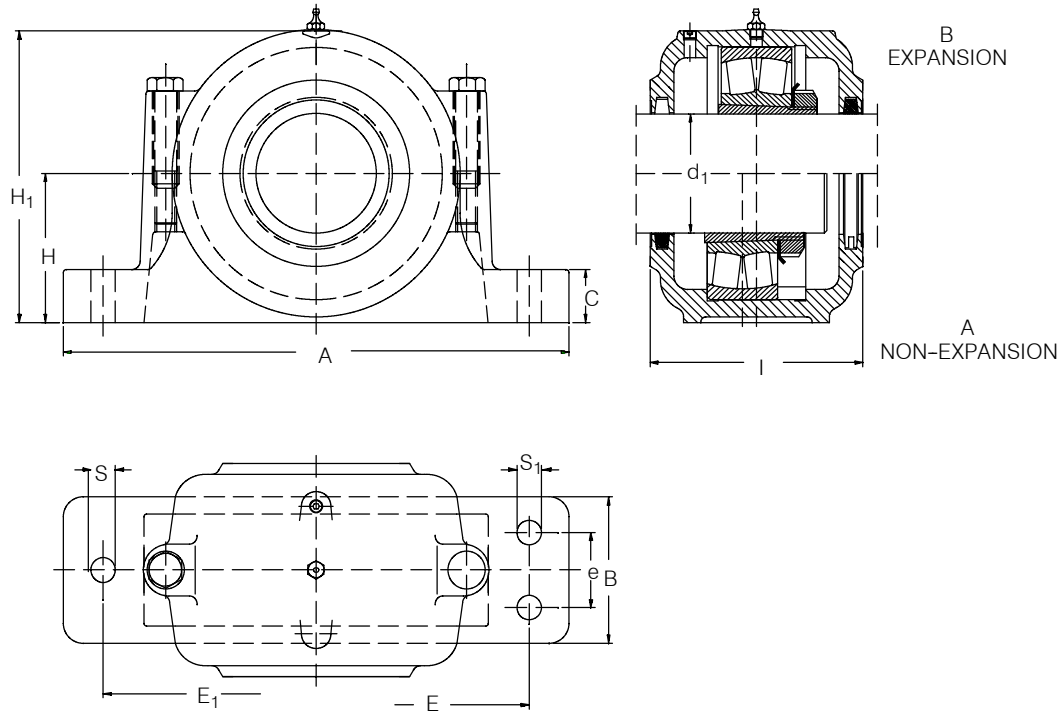
Additionally, the expansion capability for HBND, HSPA, HFO and HFOE housings is determined by the specific endplate provided with the housing. Therefore, an expansion housing will have a different part number than a non-expansion bearing of the same size. These six digit part numbers can be found in the back of each product section.

FEATURES/BENEFITS PAGE B10-2	SELECTION PAGE B10-10	DIMENSIONS PAGE B10-14	
---------------------------------	--------------------------	---------------------------	--

SELECTION/DIMENSIONS

SSN 500 Plummer Block Housing (Split)

REINFORCED BASE FOR SELF-ALIGNING BALL OR SPHERICAL ROLLER BEARINGS WITH ADAPTER SLEEVE



The reinforced base can be equipped with two or four bolt holes on request. SSN Housings come standard in ductile iron. On request they could be manufactured of cast iron (GG 20) or cast steel (GS 45).

Reference No.	Part No *	Weight kg	Dimensions in mm											
			d ₁	H	H ₁	I	A	B	C	E ₁	E	e	S	S ₁
SSN 508	734805	4,0	35	60	110	85	205	60	25	170	160	30	15	11,5
SSN 509	734815	4,2	40	60	110	85	205	60	25	170	160	30	15	11,5
SSN 510	734834	4,5	45	60	115	90	205	60	25	170	160	30	15	11,5
SSN 511	734845	5,6	50	70	130	95	255	70	28	210	200	35	18	15
SSN 512	734862	6,4	55	70	135	105	255	70	30	210	200	35	18	15
SSN 513	734878	8,1	60	80	150	110	275	80	30	230	220	40	18	15
SSN 515	734899	8,7	65	80	155	115	280	80	30	230	220	40	18	15
SSN 516	734935	11,1	70	95	175	120	315	90	32	260	250	50	22	15
SSN 517	734958	12,1	75	95	185	125	320	90	32	260	250	50	22	15
SSN 518	734984	14,8	80	100	195	145	345	100	35	290	280	50	22	18
SSN 520	735031	19,3	90	112	215	160	380	110	40	320	300	60	26	18
SSN 522	735074	24,7	100	125	240	175	410	120	45	350	320	70	26	18
SSN 524	735133	28,0	110	140	270	185	410	120	45	350	330	70	26	18
SSN 526	735171	35,5	115	150	290	190	445	130	50	380	370	70	28	22
SSN 528	735200	45,0	125	150	305	205	500	150	50	420	400	80	35	26
SSN 530	735244	53,5	135	160	325	220	530	160	60	450	430	90	35	26
SSN 532	735273	62,0	140	170	345	235	550	160	60	470	450	90	35	26

* 2-Bolt housings furnished unless otherwise specified.

FEATURES/BENEFITS PAGE B10-2	HOW TO ORDER/ NOMENCLATURE PAGE B10-5		
---------------------------------	---	--	--

SELECTION/DIMENSIONS

SSN 500 Plummer Block Housing (Split) CORRESPONDING BEARINGS AND ACCESSORY PARTS

SSN housings are supplied standard with felt seals.

Ref. No. Housing without bearings	Ref. of Bearing *	Fixing Rings	
		Reference No.	Weight ea. g
SSN 508	1208	2 x FR 7,5/80	30
	2208	1 x FR 10/80	39
	22208	1 x FR 10/80	39
SSN 509	1209	2 x FR 6/85	26
	2209	1 x FR 8/85	35
	22209	1 x FR 8/85	35
SSN 510	1210	2 x FR 6,5/90	30
	2210	1 x FR 10/90	45
	22210	1 x FR 10/90	45
SSN 511	1211	2 x FR 6/100	30
	2211	1 x FR 8/100	41
	22211	1 x FR 8/100	41
SSN 512	1212	2 x FR 8/110	51
	2212	1 x FR 10/110	74
	22212	1 x FR 10/110	74
SSN 513	1213	2 x FR 10/120	81
	2213	1 x FR 12/120	99
	22213	1 x FR 12/120	99
SSN 515	1215	2 x FR 8/130	68
	2215	1 x FR 10/130	87
	22215	1 x FR 10/130	87
SSN 516	1216	2 x FR 8,5/140	80
	2216	1 x FR 10/140	100
	22216	1 x FR 10/140	100
SSN 517	1217	2 x FR 9/150	94
	2217	1 x FR 10/150	104
	22217	1 x FR 10/150	104

Ref. No. Housing without bearings	Ref. of Bearing *	Fixing Rings		
		Reference No.	Weight ea. g	
SSN 518	1218	2 x FR 16,2/160	222	
	2218	2 x FR 11,2/160	123	
	22218	2 x FR 11,2/160	123	
	23218	1 x FR 10/160	137	
SSN 520	1220	2 x FR 18,1/180	336	
	2220	2 x FR 12,1/180	153	
	23220	2 x FR 12,1/180	153	
SSN 522	1222	2 x FR 21/200	367	
	2222	2 x FR 13,5/200	233	
	23222	2 x FR 13,5/200	233	
SSN 524	23222	1 x FR 10/200	175	
	SSN 524	22224	2 x FR 14/215	258
		23224	1 x FR 10/215	186
SSN 526	22226	2 x FR 13/230	262	
	23226	1 x FR 10/230	200	
SSN 528	22228	2 x FR 15/250	332	
	23228	1 x FR 10/250	281	
SSN 530	22230	2 x FR 16,5/270	476	
	23230	1 x FR 10/270	309	
SSN 532	22232	2 x FR 17/290	518	
	23232	1 x FR 10/290	324	

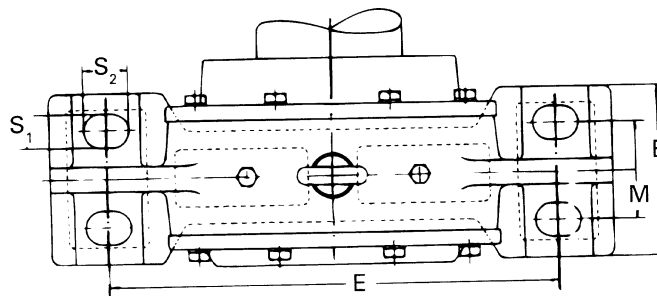
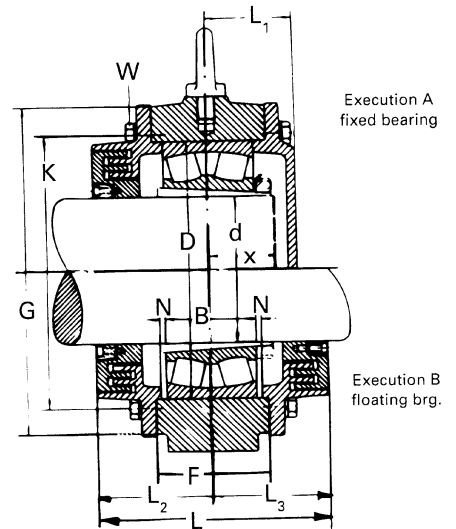
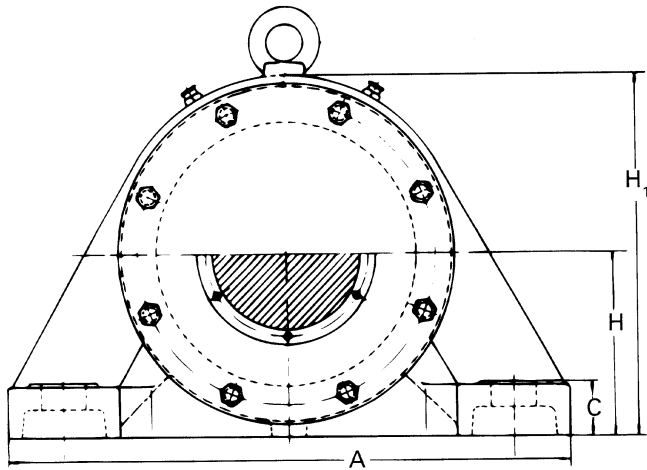
* See page B10-37 for Part Numbers.

FEATURES/BENEFITS PAGE B10-2	HOW TO ORDER/ NOMENCLATURE PAGE B10-5		
---------------------------------	---	--	--

SELECTION/DIMENSIONS

HBND..K Plummer Block Housing

FOR SPHERICAL ROLLER BEARINGS WITH ADAPTER SLEEVE



<p>FEATURES/BENEFITS PAGE B10-2</p>	<p>HOW TO ORDER/ NOMENCLATURE PAGE B10-5</p>	<p>HBND PART NUMBERS PAGE B10-18</p>	
---	--	--	--

SELECTION/DIMENSIONS

HBND..K Plummer Block Housing FOR SPHERICAL ROLLER BEARINGS WITH ADAPTER SLEEVE

Ref. No. Housing w/o bearings	Part No.	Shaft ∅ d	Dimensions in mm													
			A	B	C	E	M	H	H ₁	S ₁	S ₂	L♦	L ₁	L ₂	L ₃	F
HBND 2211 K	*	50	250	80	25	200	40	80	160	15	20	109	35	49	60	50
HBND 2213 K	*	60	300	100	32	240	50	90	180	19	26	113	48	48	65	50
HBND 2215 K	*	65	280	80	30	230	40	95	185	19	25	110	45	50	60	50
HBND 2218 K	*	80	370	110	38	290	60	110	220	23	32	123	51	53	70	55
HBND 2220 K	*	90	400	120	40	320	65	130	255	30	35	168	63	78	90	65
HBND 2222 K	*	100	440	130	42	350	70	140	280	30	35	177	66,5	82,5	94,5	73
HBND 2224 K	*	110	470	140	42	370	75	150	300	30	35	183	69	84	99	77
HBND 2226 K	*	115	500	150	45	400	85	160	315	30	40	195	70	95	100	84
HBND 2228 K	*	125	530	160	50	430	85	170	345	30	42	206	78	98	108	88
HBND 2230 K	*	135	550	170	54	450	90	180	365	36	45	213	81,5	101,5	111,5	97
HBND 2232 K	*	140	600	180	58	490	105	190	385	36	45	227	86	106	121	106
HBND 2234 K	*	150	640	200	62	525	110	200	405	36	45	247	91	116	131	111
HBND 2236 K	*	160	680	210	65	550	120	210	425	36	45	255	95	120	135	114
HBND 2238 K	*	170	710	220	85	560	120	220	455	36	45	275	105	130	145	135
HBND 2240 K	*	180	780	240	75	640	140	235	475	36	50	270	105	125	145	135
HBND 2244 K	*	200	890	270	80	720	140	270	550	36	50	309	152	142	167	160
HBND 3048 K	*	220	680	210	70	560	120	225	455	42	52	251	108	108	143	120
HBND 3052 K	*	240	720	220	75	600	130	250	500	42	52	261	113	113	148	130
HBND 3056 K	*	260	760	240	80	630	140	260	520	42	65	281	118	118	163	135
HBND 3060 K	*	280	820	250	85	690	150	285	570	42	65	301	133	128	173	140
HBND 3064 K	*	300	860	260	90	730	160	295	590	42	65	301	133	128	173	150
HBND 3068 K	*	320	900	270	95	770	170	315	630	42	65	311	143	133	178	160
HBND 3072 K	*	340	960	280	100	820	180	330	660	42	65	325	150	140	185	170
HBND 3076 K	*	360	1 000	300	105	840	190	340	680	56	75	329	152	142	187	160

* See page B10-19 for Part Numbers for HBND...K

♦ Clearance must be allowed for installation and removal of end cover bolts and seal disc.

FEATURES/BENEFITS PAGE B10-2	HOW TO ORDER/ NOMENCLATURE PAGE B10-5	HBND PART NUMBERS PAGE B10-18	
---------------------------------	---	-------------------------------------	--

SELECTION/DIMENSIONS

HBND – Part Numbers

HBND 22 – HOUSING GS WITH GG END COVER

HBND 2211 KBL GS	719578
HBND 2213 KAF GS	719583
HBND 2213 KAL GS	719587
HBND 2213 KBF GS	719591
HBND 2213 KBL GS	719595
HBND 2215 KAF GS	719599
HBND 2215 KAL GS	719601
HBND 2215 KBF GS	719603
HBND 2215 KBL GS	719605
HBND 2218 KAF GS	719619
HBND 2218 KAL GS	719624
HBND 2218 KBF GS	719629
HBND 2218 KBL GS	719634
HBND 2220 KAF GS	719640
HBND 2220 KAL GS	719643
HBND 2220 KBF GS	719646
HBND 2220 KBL GS	719649
HBND 2222 KAF GS	719652
HBND 2222 KAL GS	719655
HBND 2222 KBF GS	719658
HBND 2222 KBL GS	719661
HBND 2224 KAF GS	719667

HBND 2224 KAL GS	719670
HBND 2224 KBF GS	719673
HBND 2224 KBL GS	719676
HBND 2228 KBF GS	719687
HBND 2228 KBL GS	719690
HBND 2230 KAF GS	719694
HBND 2230 KAL GS	719696
HBND 2230 KBF GS	719698
HBND 2230 KBL GS	719700
HBND 2234 KAL GS	719727
HBND 2234 KBF GS	719731
HBND 2234 KBL GS	719735
HBND 2236 KAF GS	719744
HBND 2236 KAL GS	719748
HBND 2236 KBF GS	719753
HBND 2236 KBL GS	719758
HBND 2238 KAF GS	719762
HBND 2240 KAF GS	719768
HBND 2240 KBF GS	719773
HBND 2240 KBL GS	719776
HBND 2244 KBF GS	719786

* See page B10-4 for Nomenclature

FEATURES/BENEFITS PAGE B10-2	HOW TO ORDER/ NOMENCLATURE PAGE B10-5		
---------------------------------	---	--	--

SELECTION/DIMENSIONS

HBND – Part Numbers

HBND 30 – HOUSING GS WITH GG END COVER

HBND 3048 KAF GS	720022
HBND 3048 KAL GS	720026
HBND 3048 KBF GS	720029
HBND 3048 KBL GS	720031
HBND 3052 KAF GS	720038
HBND 3052 KAL GS	720040
HBND 3052 KBF GS	720043
HBND 3052 KBL GS	720046
HBND 3056 KAF GS	720057
HBND 3056 KAL GS	720061
HBND 3056 KBF GS	720065

HBND 3056 KBL GS	720069
HBND 3060 KAF GS	720072
HBND 3060 KAL GS	720073
HBND 3060 KBF GS	720074
HBND 3060 KBL GS	720075
HBND 3068 KAF GS	720087
HBND 3068 KAL GS	720089
HBND 3068 KBF GS	720091
HBND 3068 KBL GS	720093
HBND 3076 KBF GS	720099
HBND 3076 KBL GS	720101

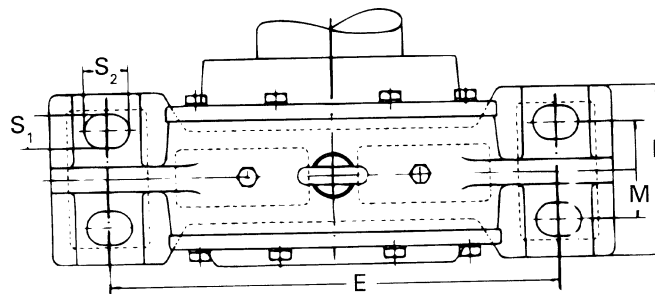
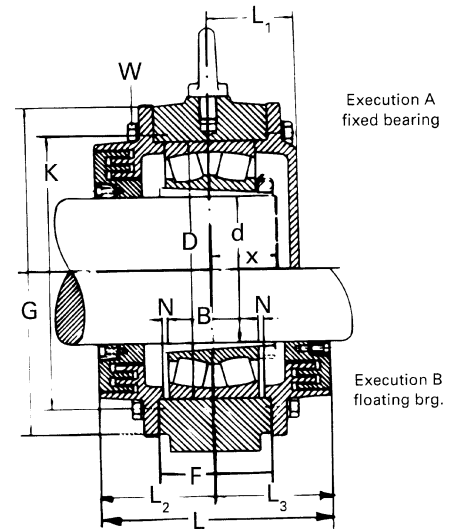
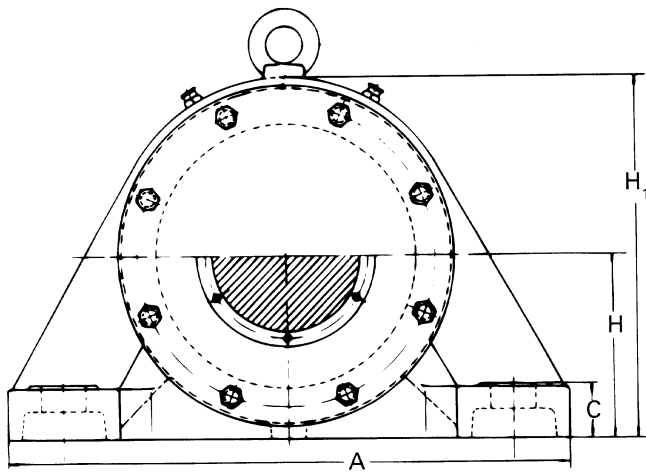
* See page B10-4 for Nomenclature

FEATURES/BENEFITS PAGE B10-2	HOW TO ORDER/ NOMENCLATURE PAGE B10-5		
---------------------------------	---	--	--

SELECTION/DIMENSIONS

HBND..K Plummer Block Housing

CORRESPONDING BEARINGS AND ACCESSORY PARTS



FEATURES/BENEFITS PAGE B10-2	HOW TO ORDER/ NOMENCLATURE PAGE B10-5	HBND PART NUMBERS PAGE B10-18	
---------------------------------	---	-------------------------------------	--

SELECTION/DIMENSIONS

HBND..K Plummer Block Housing

CORRESPONDING BEARINGS AND ACCESSORY PARTS

Ref. No. Housing w/o bearings	Shaft ∅ d	Ref. of Bearing *	Bearing Dimensions		End plate bolt size		Lifting Ring Z	Overall Dimensions				Weight w/brg. + sleeve kg	Sleeve *
			D	B	W	Qty.		G	K	N	X		
HBND 2211 K	50	22211 K	100	25	M 8	12	M 8	142	122	2	27	-	H 311
HBND 2213 K	60	22213 K	120	31	M 8	16	M 8	175	156	2	32	-	H 313
HBND 2215 K	65	22215 K	130	31	M 8	16	M 8	172	150	2	33	-	H 315
HBND 2216 K	70	22216 K	140	33	M 8	16	M 8	174	155	2	36	-	H 316
HBND 2218 K	80	22218 K	160	40	M 8	12	M 10	210	185	2	42	50	H 318
HBND 2220 K	90	22220 K	180	46	M 12	12	M 12	230	205	2,5	50	55	H 320
HBND 2222 K	100	22222 K	200	53	M 12	12	M 16	260	230	2,5	54	60	H 322
HBND 2224 K	110	22224 K	215	58	M 12	12	M 16	275	245	2,5	56	70	H 3124
HBND 2226 K	115	22226 K	230	64	M 12	12	M 16	290	260	3	57	80	H 3126
HBND 2228 K	125	22228 K	250	68	M 16	12	M 20	315	285	3	64	95	H 3128
HBND 2230 K	135	22230 K	270	73	M 16	12	M 20	346	305	3	68	110	H 3130
HBND 2232 K	140	22232 K	290	80	M 16	12	M 20	365	330	3	72	130	H 3132
HBND 2234 K	150	22234 K	310	86	M 16	16	M 16	384	345	3	77	145	H 3134
HBND 2236 K	160	22236 K	320	86	M 16	16	M 20	400	360	3	80	175	H 3136
HBND 2238 K	170	22238 K	340	92	M 16	16	M 20	420	385	3	85	220	H 3138
HBND 2240 K	180	22240 K	360	98	M 16	16	M 24	450	405	4	88	240	H 3140
HBND 2244 K	200	22244 K	400	108	M 20	16	M 24	505	455	3	95	380	H 3144X
HBND 3048 K	220	23048 K	360	92	M 16	16	M 20	440	400	4	85	180	H 3048
HBND 3052 K	240	23052 K	400	104	M 16	16	M 20	475	440	4	87	225	H 3052X
HBND 3056 K	260	23056 K	420	106	M 16	16	M 20	495	460	4	92	255	H 3056
HBND 3060 K	280	23060 K	460	118	M 16	16	M 20	550	510	4	110	320	H 3060HG
HBND 3064 K	300	23064 K	480	121	M 16	16	M 20	560	530	4	110	355	H 3064HG
HBND 3068 K	320	23068 K	520	133	M 20	16	M 24	605	565	5	112	425	H 3068HG
HBND 3072 K	340	23072 K	540	134	M 20	16	M 24	650	590	5	120	475	H 3072HG
HBND 3076 K	360	23076 K	560	135	M 20	16	M 24	660	610	7	123	515	H 3076HG

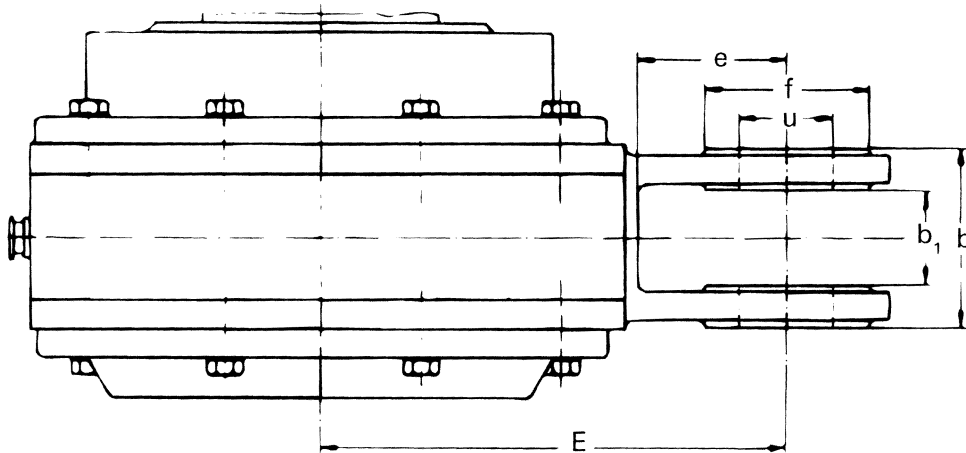
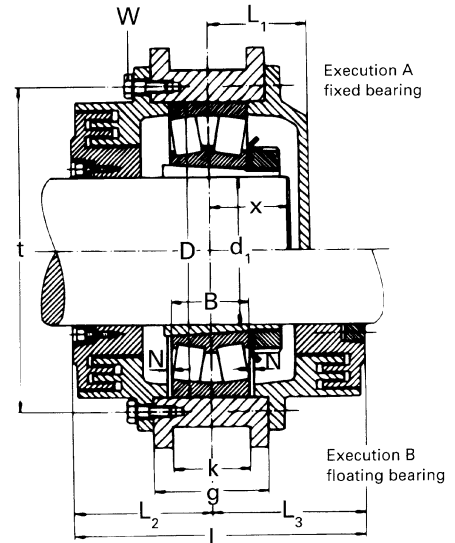
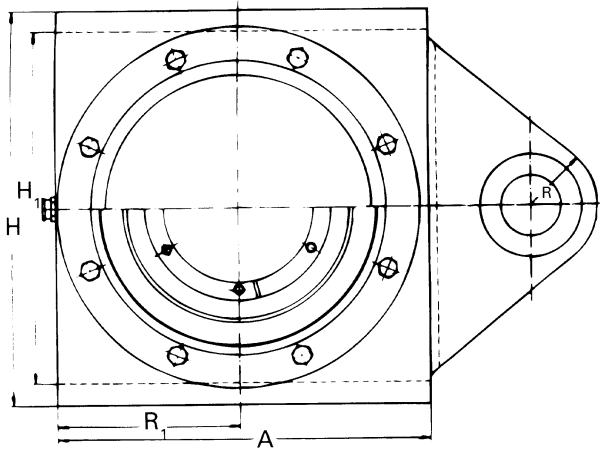
* See page B10-37 for Bearing and Adapter Sleeve Part Numbers.

FEATURES/BENEFITS PAGE B10-2	HOW TO ORDER/ NOMENCLATURE PAGE B10-5	HBND PART NUMBERS PAGE B10-18	
---------------------------------	---	-------------------------------------	--

SELECTION/DIMENSIONS

HSPA Take-Up Unit Housings

SPHERICAL ROLLER BEARINGS WITH ADAPTER SLEEVE



<p>FEATURES/BENEFITS PAGE B10-2</p>	<p>HOW TO ORDER/ NOMENCLATURE PAGE B10-5</p>	<p>HSPA PART NUMBERS PAGE B10-36</p>	
---	--	--	--

SELECTION/DIMENSIONS

HSPA Take-Up Unit Housings

SPHERICAL ROLLER BEARINGS WITH ADAPTER SLEEVE

Ref. No Housings w/o brgs.	Part No.	Shaft ∅ d ₁	Dimensions in mm															
			A	R ₁	H	H ₁	E	e	f	u	b	b ₁	L \blacklozenge	L ₁	L ₂	L ₃	g	k
HSPA 2228 K	*	125	315	155	330	300	230	70	70	40	76	40	226	78	113	113	83	53
HSPA 3028 K	*	125	260	130	300	270	225	90	90	50	150	60	156	68	68	88	70	45
HSPA 3030 K	*	135	280	140	320	290	235	90	90	50	150	60	194	82	82	112	85	45
HSPA 3132 K	*	140	370	185	370	340	350	160	100	61	132	62	229	108	108	121	116	65
HSPA 3034 K	*	150	325	162,5	360	330	260	90	90	50	150	60	201	88	88	113	102	65
HSPA 3134 K	*	150	375	187,5	400	370	395	180	100	60	132	62	249	113	113	136	120	65
HSPA 2236 K	*	160	420	210	440	410	380	170	140	80	135	65	255	95	120	135	114	60
HSPA 3036 K	*	160	350	175	390	360	275	90	90	50	150	60	201	88	88	113	100	65
HSPA 3136 K	*	160	400	200	440	410	360	158	140	80	135	65	248	105	113	135	120	60
HSPA 3236 K	*	160	420	210	450	410	300	90	140	80	140	70	285	110	135	150	140	93
HSPA 3038 K	*	170	375	180	440	400	290	90	90	50	150	60	211	88	93	118	105	65
HSPA 3040 K	*	180	390	200	430	400	275	85	120	70	125	62	240	108	107	133	125	83
HSPA 3140 K	*	180	420	210	440	410	360	140	100	60	140	70	270	115	120	150	140	100
HSPA 3044 K	*	200	430	210	480	440	325	100	100	60	200	70	241	103	103	138	120	65
HSPA 3144 K	*	200	470	235	510	480	530	260	140	100	144	74	295	125	135	160	150	65
HSPA 3148 K	*	220	520	260	540	500	515	250	250	100	215	123	328	129	149	179	152	65
HSPA 3052 K	*	240	500	245	540	500	515	250	250	100	215	123	261	113	113	148	135	65
HSPA 3152 K	*	240	550	275	570	540	565	270	250	100	225	135	336	140,5	150,5	185,5	175	80
HSPA 3252 K	*	240	596	298	610	570	615	300	240	100	240	173	375	157,5	167,5	207,5	205	103
HSPA 3156 K	*	260	600	300	610	570	615	300	200	100	240	173	351	148	158	193	175	103
HSPA 3160 K	*	280	630	315	650	610	650	310	200	100	270	170	385	155	170	215	190	130
HSPA 2260 K	*	280	660	330	680	640	630	280	200	105	220	150	370	160,5	174,5	195,5	177	80
HSPA 3260 K	*	280	680	340	690	650	680	310	260	100	270	190	404	187	182	222	230	115
HSPA 3164 K	*	300	680	340	700	660	680	340	240	110	300	180	395	192	180	215	210	140
HSPA 3168 K	*	320	740	370	740	700	720	310	240	120	300	180	445	200	200	245	220	150
HSPA 3268 K	*	320	735	385	740	700	750	310	240	110	300	213	475	238	203	272	265	123
HSPA 3272 K	*	340	800	400	830	790	765	310	280	130	330	213	509	222	227	282	275	123
HSPA 3176 K	*	360	750	375	780	740	750	320	230	110	300	200	459	202	202	257	230	120
HSPA 3276 K	*	360	810	405	820	780	780	305	240	110	300	213	529	257	232	297	295	123

* See page B10-36 for Part Numbers for HSPA

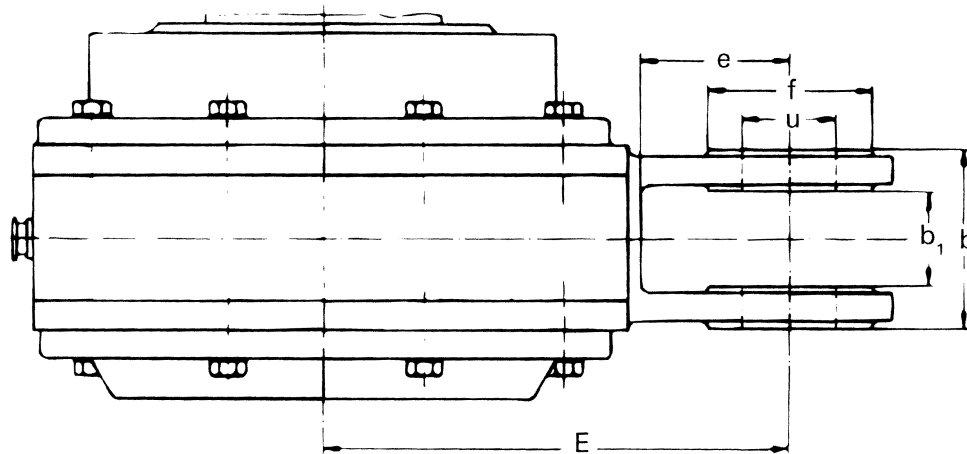
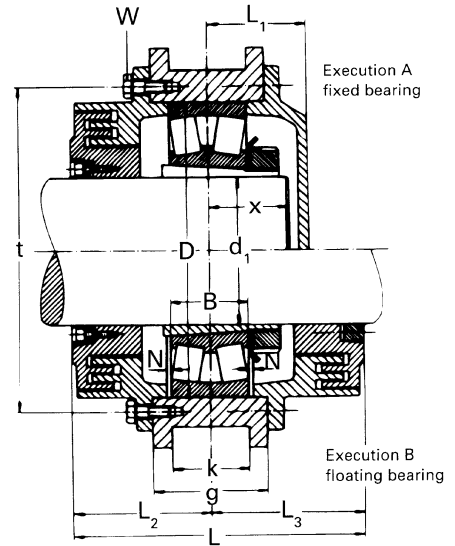
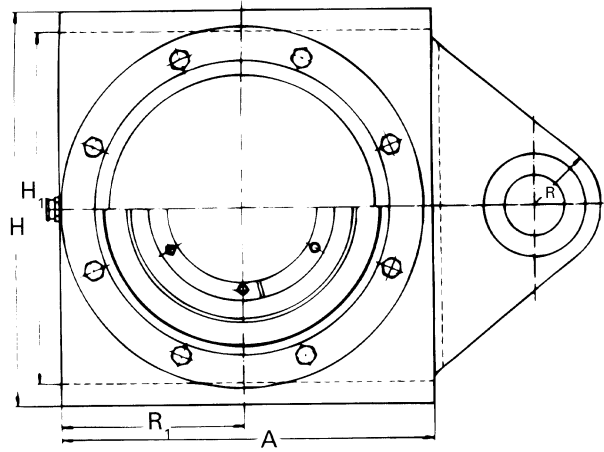
◆ Clearance must be allowed for installation and removal of end cover bolts and seal disc.

FEATURES/BENEFITS PAGE B10-2	HOW TO ORDER/ NOMENCLATURE PAGE B10-5	HSPA PART NUMBERS PAGE B10-36	
---------------------------------	---	-------------------------------------	--

SELECTION/DIMENSIONS

HSPA Take-Up Unit Housings

CORRESPONDING BEARINGS AND ACCESSORY PARTS



FEATURES/BENEFITS PAGE B10-2	HOW TO ORDER/ NOMENCLATURE PAGE B10-5	HSPA PART NUMBERS PAGE B10-36	
---------------------------------	---	-------------------------------------	--

SELECTION/DIMENSIONS

HSPA Take-Up Unit Housings

CORRESPONDING BEARINGS AND ACCESSORY PARTS

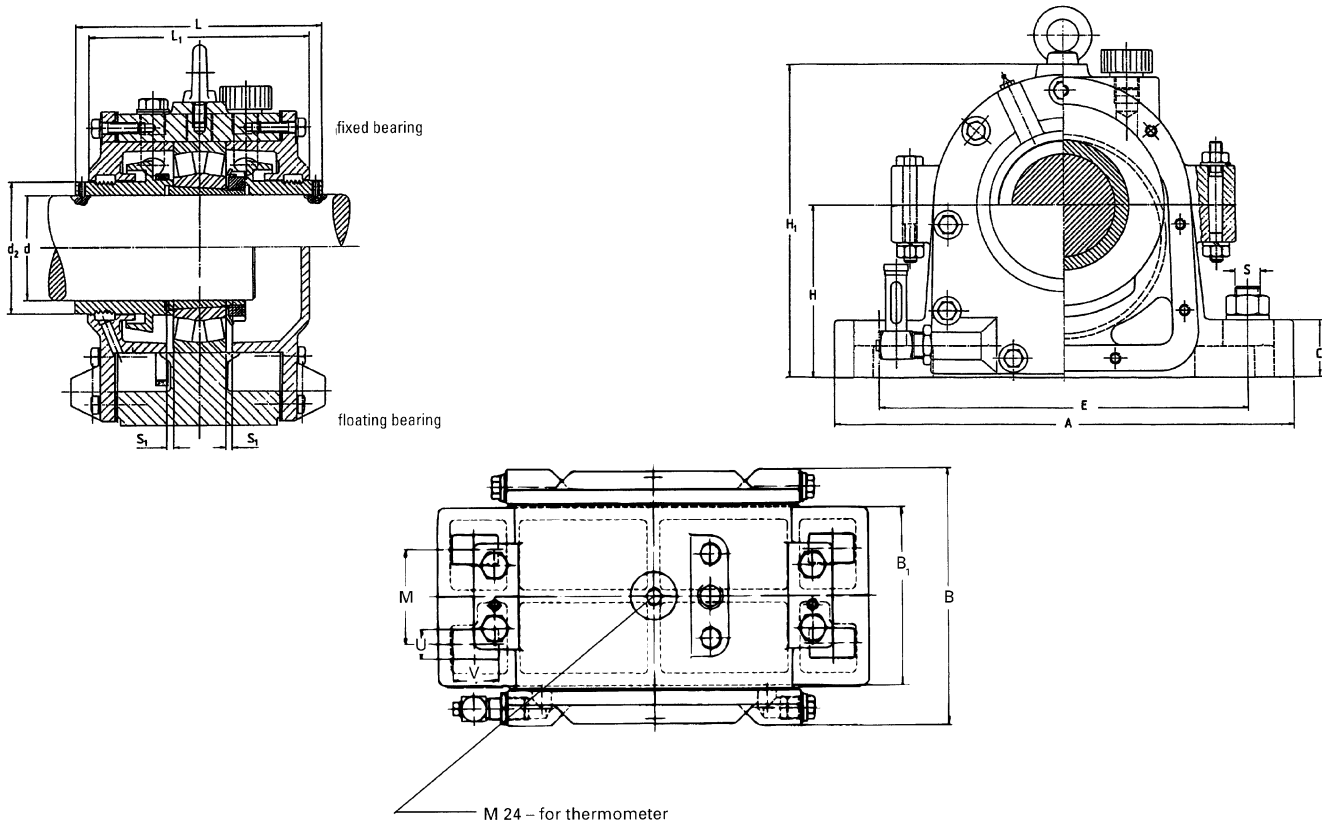
Ref. No Housings w/o brgs	Shaft Size d1	Ref. of Bearing *	Sleeve *	Bearing Dimensions		End Plate Bolt Size			Overall Dimensions			Weight w/o brg. kg
				D	B	W	t	Qty.	X	N	R	
HSPA 2228 K	125	22228 K	H 3128	250	68	M 10	275	16	65	3	45	43
HSPA 3028 K	125	23028 K	H 3028	210	53	M 10	235	16	55	3	70	50
HSPA 3030 K	135	23030 K	H 3030	225	56	M 12	250	16	60	2	70	60
HSPA 3132 K	140	23132 K	H 3132	270	86	M 12	300	16	78	3	90	125
HSPA 3034 K	150	23034 K	H 3034	260	67	M 12	285	16	68	2	70	87
HSPA 3134 K	150	23134 K	H 3134	280	88	M 12	330	16	80	3	90	150
HSPA 2236 K	160	22236 K	H 3136	320	86	M 16	360	16	80	3	100	200
HSPA 3036 K	160	23036 K	H 3036	280	74	M 12	310	16	72	3	70	105
HSPA 3136 K	160	23136 K	H 3136	300	96	M 16	350	16	80	3	100	180
HSPA 3236 K	160	23236 K	H 2336	320	112	M 16	360	16	90	3	90	230
HSPA 3038 K	170	23038 K	H 3038	290	75	M 16	325	16	72	3	70	135
HSPA 3040 K	180	23040 K	H 3040	310	82	M 16	340	16	78	3	80	160
HSPA 3140 K	180	23140 K	H 3140	340	112	M 16	380	16	95	2	80	175
HSPA 3044 K	200	23044 K	H 3044 X	340	90	M 16	375	16	80	3	80	185
HSPA 3144 K	200	23144 K	H 3144 X	370	120	M 16	410	16	95	4	120	265
HSPA 3148 K	220	23148 K	H 3148 X	400	128	M 20	455	16	110	4	150	310
HSPA 3052 K	240	23052 K	H 3052 X	400	104	M 16	440	16	94	4	150	240
HSPA 3152 K	240	23152 K	H 3152 X	440	144	M 24	490	16	115	4	150	330
HSPA 3252 K	240	23252 K	H 2352 XHG	480	174	M 20	535	16	130	3	150	420
HSPA 3156 K	260	23156 K	H 3156 X	460	146	M 24	510	16	120	4	150	360
HSPA 3160 K	280	23160 K	H 3160 HG	500	160	M 24	550	16	130	4	150	440
HSPA 2260 K	280	22260 K	H 3160 HG	540	140	M 20	600	16	120	4	170	530
HSPA 3260 K	280	23260 K	H 3260 HG	540	192	M 24	600	16	145	4	180	625
HSPA 3164 K	300	23164 K	H 3164 HG	540	176	M 24	590	16	135	4	180	580
HSPA 3168 K	320	23168 K	H 3168 HG	580	190	M 24	630	16	160	4	200	640
HSPA 3268 K	320	23268 K	H 3268 HG	620	224	M 24	680	16	210	5	200	650
HSPA 3272 K	340	23272 K	H 3272 HG	650	232	M 24	890	16	190	5	225	890
HSPA 3176 K	360	23176 K	H 3176 HG	620	194	M 24	700	16	170	5	200	720
HSPA 3276 K	360	23276 K	H 3276 HG	680	240	M 30	730	16	220	5	200	910

* See page B10-37 for Bearing and Adapter Sleeve Part Numbers.

FEATURES/BENEFITS PAGE B10-2	HOW TO ORDER/ NOMENCLATURE PAGE B10-5	HSPA PART NUMBERS PAGE B10-36	
---------------------------------	---	-------------------------------------	--

SELECTION/DIMENSIONS

HFO With Oil Conveying Ring Plummer Block Housing (split) SPHERICAL ROLLER BEARINGS WITH ADAPTER SLEEVE



These housings are manufactured of grey cast iron (GG 25).

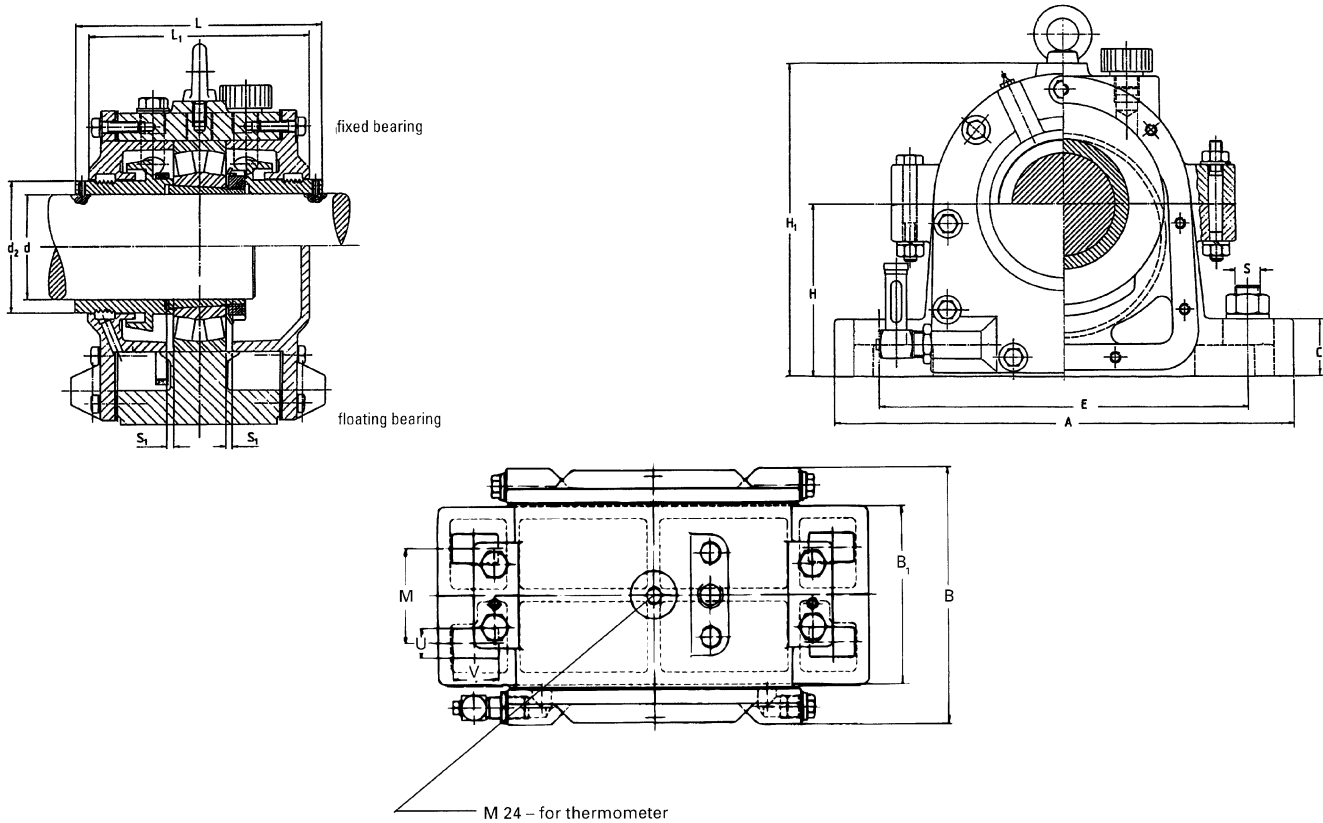
Ref. No. Housings w/o Bearings	Part No.	Dimensions in mm															Weight kg	
		d	d ₂	H	H ₁	A	E	C	S	S ₁	V	U	M	B ₁	B	L		L ₁
HFO 517	*	75	96	125	230	330	260	35	M 20	5	40	24	60	110	182	180	165	43
HFO 518	*	80	100	135	245	360	290	45	M 20	5	40	24	70	120	190	190	170	45
HFO 519	*	85	105	140	255	360	290	40	M 20	5	40	24	80	135	210	200	184	45
HFO 520	*	90	110	145	270	400	320	50	M 24	5	45	28	75	130	205	206	186	57
HFO 522	*	100	120	160	290	420	347	50	M 24	5	45	28	75	145	216	229	203	73
HFO 524	*	110	135	170	315	420	347	55	M 24	8	45	28	90	170	245	276	240	102
HFO 526	*	115	145	180	335	450	377	60	M 24	8	45	28	100	180	260	270	240	105
HFO 528	*	125	160	190	355	500	415	65	M 30	8	45	35	100	190	265	280	250	135
HFO 530	*	135	170	200	375	540	450	65	M 30	8	50	35	115	190	265	280	250	150
HFO 532	*	140	178	215	405	560	470	65	M 30	10	50	35	120	205	280	316	280	180
HFO 534	*	150	195	235	440	610	515	70	M 30	10	55	35	130	230	310	350	310	225
HFO 536	*	160	205	245	455	650	545	75	M 30	10	65	35	150	240	320	360	320	255
HFO 540	*	180	227	275	510	730	600	85	M 36	12	70	42	160	260	350	378	338	340
HFO 544	*	200	255	305	565	820	670	95	M 36	12	80	42	180	280	370	404	365	395

* See page B10-28 for Part Numbers for HFO

FEATURES/BENEFITS PAGE B10-2	HOW TO ORDER/ NOMENCLATURE PAGE B10-5	HFO PART NUMBERS PAGE B10-28	
---------------------------------	---	------------------------------------	--

SELECTION/DIMENSIONS

HFO With Oil Conveying Ring Plummer Block Housing (split) CORRESPONDING BEARINGS AND ACCESSORY PARTS



Reference No. housings w/o. brgs	Reference bearing *	Reference adapter sleeve assembly *	Oil level in mm		Oil quantity in litres
			max.	min.	
HFO 517	22217 K	H 317	63	42	0,7
HFO 518	22218 K	H 318	68	45	0,8
HFO 519	22219 K	H 319	70	50	0,9
HFO 520	22220 K	H 320	70	50	1,0
HFO 522	22222 K	H 322	77	50	1,5
HFO 524	22224 K	H 3124	80	60	1,9
HFO 526	22226 K	H 3126	85	60	2,5
HFO 528	22228 K	H 3128	85	60	2,7
HFO 530	22230 K	H 3130	90	60	3,0
HFO 532	22232 K	H 3132	95	65	3,3
HFO 534	22234 K	H 3134	105	75	5,0
HFO 536	22236 K	H 3136	115	80	5,2
HFO 540	22240 K	H 3140	125	85	7,4
HFO 544	22244 K	H 3144	140	95	10,0

* See page B10-37 for Bearing and Adapter Sleeve Part Numbers.

FEATURES/BENEFITS PAGE B10-2	HOW TO ORDER/ NOMENCLATURE PAGE B10-5	HFO PART NUMBERS PAGE B10-28	
---------------------------------	---	------------------------------------	--

SELECTION/DIMENSIONS

HFO – Part Numbers

HFO – BEARING HOUSINGS GG

HFO 517 AF	720939
HFO 517 AL	720940
HFO 517 BF	720942
HFO 517 BL	720945
HFO 518 AF	720947
HFO 518 AL	720950
HFO 518 BF	720953
HFO 518 BL	720956
HFO 519 AF	720959
HFO 519 AL	720960
HFO 519 BF	720961
HFO 519 BL	720962
HFO 520 AF	720963
HFO 520 AL	720965
HFO 520 BF	720968
HFO 520 BL	720970
HFO 522 AF	720972
HFO 522 AL	720973
HFO 522 BF	720974
HFO 522 BL	720975
HFO 524 AF	720976
HFO 524 AL	720978
HFO 524 BF	720980
HFO 524 BL	720982
HFO 526 AF	720984
HFO 526 AL	720987
HFO 526 BF	720990
HFO 526 BL	720993
HFO 528 AF	720996
HFO 528 AL	720999
HFO 528 BF	721002
HFO 528 BL	721005
HFO 530 AF	721008
HFO 530 AL	721010
HFO 530 BF	721012
HFO 530 BL	721014
HFO 532 AF	721016
HFO 532 AL	721018
HFO 532 BF	721020
HFO 532 BL	721022
HFO 534 AF	721024
HFO 534 AL	721026
HFO 534 BF	721028
HFO 534 BL	721030
HFO 536 AF	721032
HFO 536 AL	721034
HFO 536 BF	721036
HFO 536 BL	721040
HFO 538 BF	721043
HFO 538 BL	721044
HFO 540 AF	721045
HFO 540 AL	721046
HFO 540 BF	721047
HFO 540 BL	721049
HFO 544 AF	721051
HFO 544 AL	721053
HFO 544 BF	721055
HFO 544 BL	721057

HFO interchanges with SKF SOFN

Other sizes also available. Consult DODGE.

* See page B10-4 for Nomenclature

HFO – BEARING HOUSINGS GGG

HFO 518 AF GGG	720948
HFO 518 BF GGG	720954
HFO 518 BL GGG	720957
HFO 520 AF GGG	720964
HFO 520 AL GGG	720966
HFO 520 BF GGG	720969
HFO 520 BL GGG	720971
HFO 524 AF GGG	720977
HFO 524 AL GGG	720979
HFO 524 BF GGG	720981
HFO 524 BL GGG	720983
HFO 526 AF GGG	720985
HFO 526 AL GGG	720988
HFO 526 BF GGG	720991
HFO 526 BL GGG	720994
HFO 528 AF GGG	720997
HFO 528 AL GGG	721000
HFO 528 BF GGG	721003
HFO 528 BL GGG	721006
HFO 530 AF GGG	721009
HFO 530 AL GGG	721011
HFO 530 BF GGG	721013
HFO 530 BL GGG	721015
HFO 532 AF GGG	721017
HFO 532 AL GGG	721019
HFO 532 BF GGG	721021
HFO 532 BL GGG	721023
HFO 534 AF GGG	721025
HFO 534 AL GGG	721027
HFO 534 BF GGG	721029
HFO 534 BL GGG	721031
HFO 536 AF GGG	721033
HFO 536 AL GGG	721035
HFO 536 BF GGG	721037
HFO 536 BL GGG	721041
HFO 540 BF GGG	721048
HFO 540 BL GGG	721050
HFO 544 AF GGG	721052
HFO 544 AL GGG	721054
HFO 544 BF GGG	721056
HFO 544 BL GGG	721058

HFO – BEARING HOUSINGS GGS

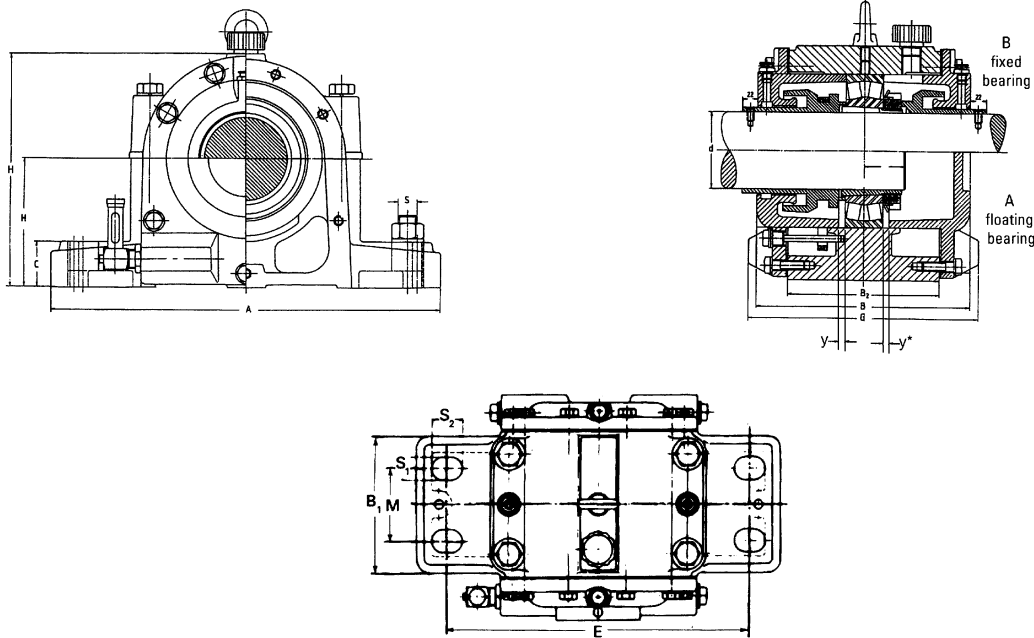
HFO 518 AF GS	720949
HFO 518 AL GS	720952
HFO 518 BF GS	720955
HFO 518 BL GS	720958
HFO 526 AF GS	720986
HFO 526 AL GS	720989
HFO 526 BF GS	720992
HFO 526 BL GS	720995
HFO 528 AF GS	720998
HFO 528 AL GS	721001
HFO 528 BF GS	721004
HFO 528 BL GS	721007
HFO 536 BF GS	721038
HFO 536 BL GS	721042

FEATURES/BENEFITS PAGE B10-2	HOW TO ORDER/ NOMENCLATURE PAGE B10-5		
---------------------------------	---	--	--

SELECTION/DIMENSIONS

HFOE With Oil Conveying Ring

SPHERICAL ROLLER BEARINGS WITH ADAPTER SLEEVE



* Dimension $y = 10$ mm for all sizes.
Bearing total axial movement is 20 mm.

These housings are manufactured of grey cast iron (GG 25).

Ref. No. housings w/o bearings	Part No.	Dimensions in mm															Weight w/o brg. kg
		d	H	H1	A	E	C	S	M	B	B1	B2	G	S1	S2	l	
HFOE 517	*	75	135	250	410	340	48	M 20	80	225	150	160	240	25	35	42	45
HFOE 518	*	80	135	250	410	340	48	M 20	80	225	150	160	240	25	35	45	50
HFOE 519	*	85	150	275	490	400	50	M 24	80	250	160	170	250	30	45	45	62
HFOE 520	*	90	150	280	490	400	50	M 24	80	250	160	170	250	30	45	50	68
HFOE 522	*	100	165	305	510	420	50	M 24	80	250	165	175	255	30	45	60	75
HFOE 524	*	110	175	325	550	440	55	M 30	80	250	165	175	255	36	50	60	80
HFOE 526	*	115	190	350	570	460	65	M 30	90	260	175	185	265	36	50	65	90
HFOE 528	*	125	190	365	570	460	65	M 30	100	260	175	180	260	36	50	65	100
HFOE 530	*	135	220	400	660	530	70	M 36	100	275	190	200	280	42	60	70	120
HFOE 532	*	140	220	410	660	530	70	M 36	110	290	200	210	290	42	60	75	135
HFOE 534	*	150	260	465	710	580	85	M 36	110	300	200	210	290	42	60	80	160
HFOE 536	*	160	260	465	710	580	85	M 36	110	300	200	210	290	42	60	80	165
HFOE 538	*	170	270	485	820	670	90	M 42	130	350	240	250	344	48	70	85	240
HFOE 540	*	180	280	510	830	670	90	M 42	130	360	240	260	336	48	70	90	250
HFOE 544	*	200	310	565	880	720	105	M 42	130	380	240	280	356	48	70	100	310
HFOE 548	*	220	340	625	980	820	120	M 42	165	400	280	300	415	48	70	110	400

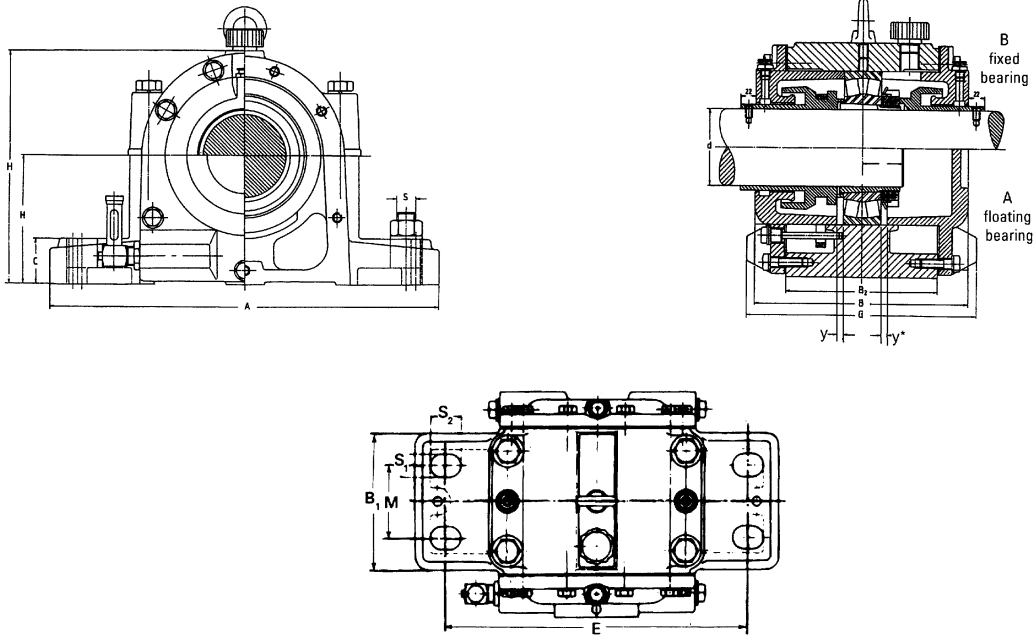
* See page B10-31 for Part Numbers for HFOE

FEATURES/BENEFITS PAGE B10-2	HOW TO ORDER/ NOMENCLATURE PAGE B10-5	HFOE PART NUMBERS PAGE B10-31	
---------------------------------	---	-------------------------------------	--

SELECTION/DIMENSIONS

HFOE With Oil Conveying Ring

CORRESPONDING BEARINGS AND ACCESSORY PARTS



* Dimension $y = 10$ mm for all sizes.
Bearing total axial movement is 20 mm.

Reference No. housings w/o. brgs	Reference bearing *	Reference adapter sleeve assembly *	Oil level in mm		Oil quantity in litres
			min.	max.	
HFOE 517	22217 K	H 317	50	65	1,2
HFOE 518	22218 K	H 318	45	60	1,3
HFOE 519	22219 K	H 319	55	70	1,4
HFOE 520	22220 K	H 320	50	65	1,5
HFOE 522	22222 K	H 322	50	70	1,9
HFOE 524	22224 K	H 3124	50	70	2,1
HFOE 526	22226 K	H 3126	55	75	2,1
HFOE 528	22228 K	H 3128	55	70	3,5
HFOE 530	22230 K	H 3130	65	90	4,0
HFOE 532	22232 K	H 3132	60	80	4,0
HFOE 534	22234 K	H 3134	90	105	5,7
HFOE 536	22236 K	H 3136	75	110	5,7
HFOE 538	22238 K	H 3138	70	100	7,0
HFOE 540	22240 K	H 3140	75	100	8,0
HFOE 544	22244 K	H 3144 X	80	110	10,0
HFOE 548	22248 K	H 3148 X	110	125	14,0

* See page B10-37 for Bearing and Adapter Sleeve Part Numbers.

FEATURES/BENEFITS PAGE B10-2	HOW TO ORDER/ NOMENCLATURE PAGE B10-5	HFOE PART NUMBERS PAGE B10-31	
---------------------------------	---	-------------------------------------	--

SELECTION/DIMENSIONS

HFOE – Part Numbers

HFOE BEARING HOUSINGS GG

HFOE 517 AF	721266
HFOE 517 AL	721267
HFOE 517 BF	721268
HFOE 517 BL	721269
HFOE 518 AF	721270
HFOE 518 AL	721271
HFOE 518 BF	721272
HFOE 518 BL	721273
HFOE 519 AF	721274
HFOE 519 AL	721275
HFOE 519 BF	721276
HFOE 519 BL	721277
HFOE 520 AF	721278
HFOE 520 AL	721279
HFOE 520 BF	721280
HFOE 520 BL	721282
HFOE 522 AF	721283
HFOE 522 AL	721285
HFOE 522 BF	721288
HFOE 522 BL	721292
HFOE 524 AF	721294
HFOE 524 AL	721295
HFOE 524 BF	721296
HFOE 524 BL	721297
HFOE 526 AF	721298
HFOE 526 AL	721300
HFOE 526 BF	721302
HFOE 526 BL	721304
HFOE 528 AF	721306
HFOE 528 AL	721309
HFOE 528 BF	721312
HFOE 528 BL	721315
HFOE 530 AF	721318
HFOE 530 AL	721320
HFOE 530 BF	721322
HFOE 530 BL	721324
HFOE 532 AF	721326
HFOE 532 AL	721327
HFOE 532 BF	721328
HFOE 532 BL	721329
HFOE 534 AF	721330
HFOE 534 AL	721331
HFOE 534 BF	721332
HFOE 534 BL	721333
HFOE 536 AF	721334
HFOE 536 AL	721335
HFOE 536 BF	721336
HFOE 536 BL	721337
HFOE 538 BF	721338
HFOE 538 BL	721339
HFOE 540 BF	738795
HFOE 540 BL	738796
HFOE 544 BF	738797
HFOE 544 BL	738798

HFOE BEARING HOUSINGS GGG

HFOE 522 AF GGG	721284
HFOE 522 AL GGG	721286
HFOE 522 BF GGG	721289
HFOE 522 BL GGG	721293
HFOE 526 AF GGG	721299
HFOE 526 AL GGG	721301
HFOE 526 BF GGG	721303
HFOE 526 BL GGG	721305
HFOE 528 AF GGG	721307
HFOE 528 AL GGG	721310
HFOE 528 BF GGG	721313
HFOE 528 BL GGG	721316

HFOE BEARING HOUSINGS GS

HFOE 528 AF GS	721308
HFOE 528 AL GS	721311
HFOE 528 BF GS	721314
HFOE 528 BL GS	721317
HFOE 530 AF GS	721319
HFOE 530 AL GS	721321
HFOE 530 BF GS	721323
HFOE 530 BL GS	721325

HFOE interchanges with FAG LOE
Other sizes also available. Consult DODGE.

* Nomenclature

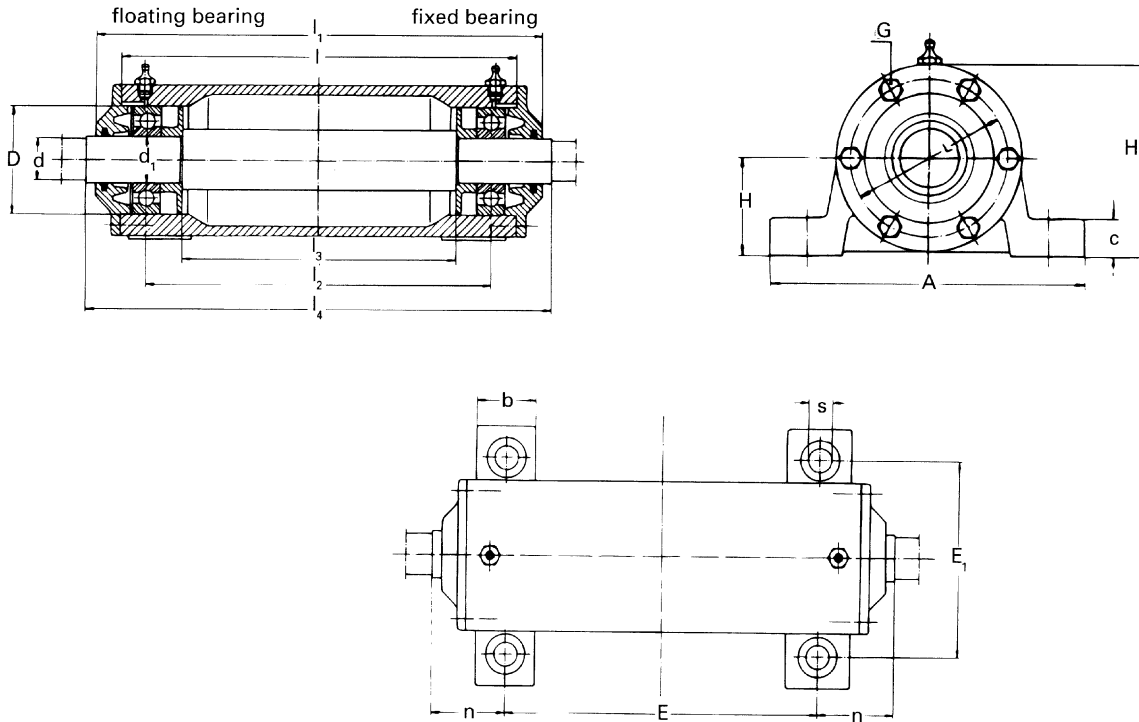
- GG = Cast iron
- GGG = Ductile iron
- GS = Cast steel
- A = One end closed
- B = Both ends closed
- F = Non-Expansion
- L = Expansion

FEATURES/BENEFITS PAGE B10-2	HOW TO ORDER/ NOMENCLATURE PAGE B10-5		
---------------------------------	---	--	--

SELECTION/DIMENSIONS

PDFN – Two Bearing Housings

WITH GREASE REGULATOR FOR DEEP GROOVE BALL BEARINGS



As an alternative to the usual plummer block housings for high speed fans, we have developed a special unit with grease lubrication. Since errors of alignment are virtually excluded, deep groove ball bearings can be used in these housings. Due to the grease regulation discs fixed on both sides of the shaft, maintenance is simplified and excess grease is centrifuged into the middle housing area.

Grease nipples are also provided.

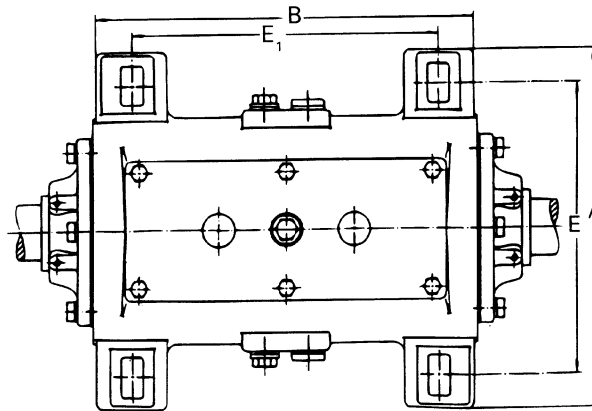
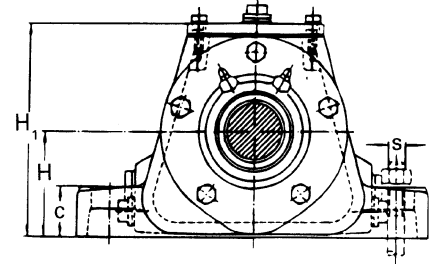
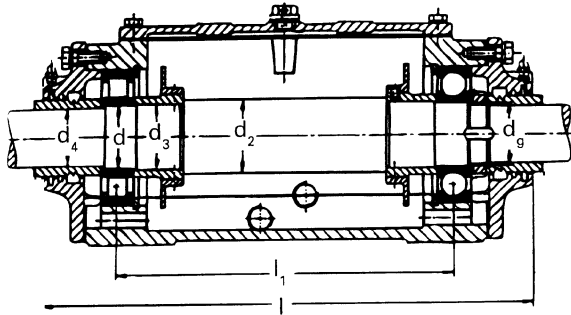
Reference No.	Part No. w/o Brgs. & Shaft *	Dimensions in mm																	Ref. Bearing	
		d	d1	H	H1	L	L1	L2	L3	L4	A	b	c	E	E1	n	s	D		G
PDFN 306	726921	24	30	50	100	210	226	171,5	140,0	240	160	40	18	150	130	45,0	15	72	4 x M 6	6306 C3
PDFN 307	726926	28	35	60	116	239	260	195,5	158,5	274	190	45	18	175	150	49,5	15	80	4 x M 6	6307 C3
PDFN 308	726929	32	40	60	121	298	315	255,5	214,0	331	190	52	20	225	150	53,0	15	90	4 x M 6	6308 C3
PDFN 309	726933	38	45	70	137	340	360	279,5	236,0	376	210	52	22	250	170	63,0	15	100	4 x M 6	6309 C3
PDFN 310	726936	42	50	70	142	360	377	311,5	266,0	393	210	60	25	275	170	59,0	15	110	6 x M 6	6310 C3
PDFN 311	726941	48	55	80	158	400	422	335,5	288,0	438	260	60	25	300	210	69,0	19	120	4 x M 8	6311 C3
PDFN 312	726943	48	60	80	165	437	460	383,5	334,0	476	260	70	25	340	210	68,0	19	130	6 x M 8	6312 C3
PDFN 313	726947	55	65	95	185	470	492	402,5	349,0	508	280	70	25	360	230	74,0	19	140	6 x M 8	6313 C3
PDFN 314	726953	60	70	95	190	490	512	420,5	365,0	532	290	70	25	380	230	76,0	19	150	6 x M 8	6314 C3
PDFN 315	726957	65	75	100	200	508	547	448,5	389,0	567	320	80	30	400	260	83,5	19	160	6 x M 8	6315 C3
PDFN 316	726959	70	80	112	220	525	556	466,5	405,0	576	320	80	30	420	260	78,0	19	170	6 x M 10	6316 C3
PDFN 317	726962	75	85	112	225	559	590	486,0	422,5	610	350	80	30	440	290	85,0	19	180	6 x M 10	6317 C3
PDFN 318	726964	80	90	112	230	575	605	510,0	446,5	625	350	85	30	460	290	82,5	19	190	6 x M 10	6318 C3
PDFN 319	726966	85	95	125	253	605	648	540,0	470,5	668	400	90	36	480	320	94,0	24	200	6 x M 10	6319 C3

* Complete units also available with bearings and shafting

FEATURES/BENEFITS PAGE B10-2	HOW TO ORDER/ NOMENCLATURE PAGE B10-5		
---------------------------------	---	--	--

SELECTION/DIMENSIONS

BLO A – Two Bearing Housings for Fans FOR SPHERICAL ROLLER BEARINGS WITH CYLINDRICAL BORE

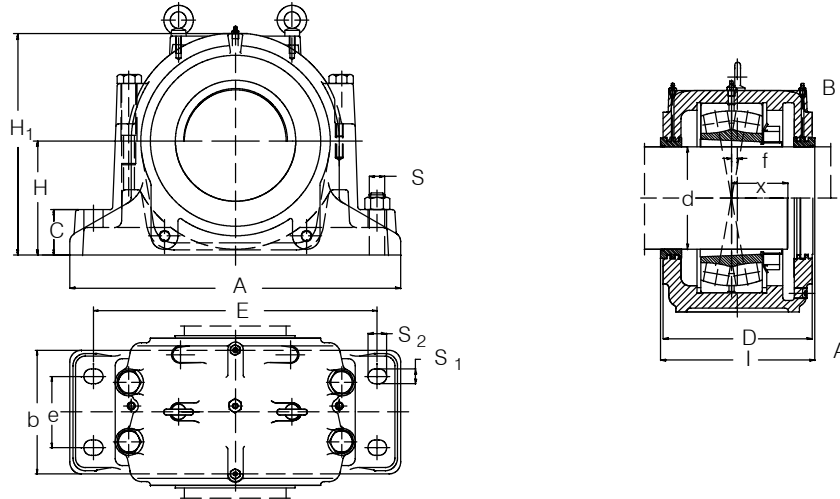


Reference No.	Part No. w/o brgs. & shaft	Dimensions in mm															Reference Bearing		lock-nut	lock-washer	Wt. w/o brg. kg	Oil qty. in litres
		d	d ₂	d ₃	d ₄	d _g	A	B	C	l ₁	H	H ₁	l	E	E ₁	s	floating	fixed				
BLO 40 A	707400	40	50	42	37	M 40x1,5	290	295	40	250	80	165	380	230	235	M 16	NU 308 C3	6308 C3	KM 8	MB 8	23	0,9
BLO 45 A	707402	45	55	47	40	M 45x1,5	290	295	40	250	80	165	380	230	235	M 16	NU 309 C3	6309 C3	KM 9	MB 9	24	0,9
BLO 50 A	707405	50	60	52	45	M 50x1,5	320	348	45	300	95	192	432	260	285	M 16	NU 310 C3	6310 C3	KM 10	MB 10	27	1,5
BLO 55 A	707410	55	65	57	50	M 55x2	320	348	45	300	95	192	432	260	285	M 16	NU 311 C3	6311 C3	KM 11	MB 11	30	1,5
BLO 60 A	707415	60	70	62	55	M 60x2	370	390	50	340	110	222	480	300	320	M 20	NU 312 C3	6312 C3	KM 12	MB 12	55	2,2
BLO 65 A	707419	65	75	67	60	M 65x2	370	390	50	340	110	222	480	300	320	M 20	NU 313 C3	6313 C3	KM 13	MB 13	56	2,2
BLO 70 A	707422	70	80	72	65	M 70x2	400	450	55	400	120	245	556	330	370	M 20	NU 314 C3	6314 C3	KM 14	MB 14	72	3,0
BLO 75 A	707428	75	85	77	70	M 75x2	400	450	55	400	120	245	556	330	370	M 20	NU 315 C3	6315 C3	KM 15	MB 15	70	3,0
BLO 80 A	707431	80	90	82	75	M 80x2	460	520	60	460	135	272	645	380	430	M 24	NU 316 C3	6316 C3	KM 16	MB 16	105	4,0
BLO 85 A	707434	85	95	87	80	M 85x2	460	520	60	460	135	272	645	380	430	M 24	NU 317 C3	6317 C3	KM 17	MB 17	120	4,0
BLO 90 A	707439	90	105	92	85	M 90x2	560	585	70	520	150	307	736	445	490	M 36	NU 318 C3	6318 C3	KM 18	MB 18	140	6,0
BLO 95 A	707453	95	110	97	90	M 95x2	560	585	70	520	150	307	736	445	490	M 36	NU 319 C3	6319 C3	KM 19	MB 19	145	6,0
BLO 100 A	707376	100	115	102	95	M100x2	560	585	70	520	150	307	736	445	490	M 36	NU 220 C3	6220 C3	KM 20	MB 20	145	6,0
BLO 110 A	707381	110	125	112	105	M110x2	560	585	70	520	150	307	736	445	490	M 36	NU 222 C3	6222 C3	KM 22	MB 22	150	6,0
BLO 120 A	707385	120	140	122	115	M120x2	600	955	75	900	160	330	1105	480	860	M 36	NU 224 C3	6224 C3	KM 24	MB 24	220	10,0
BLO 130 A	707389	130	150	132	125	M130x2	690	830	90	750	200	397	1024	550	710	M 42	NU 226 C3	6226 C3	KM 26	MB 26	340	18,0
BLO 140 A	707391	140	160	142	135	M140x2	690	830	90	750	200	397	1024	550	710	M 42	NU 228 C3	6228 C3	KM 28	MB 28	350	20,0

FEATURES/BENEFITS PAGE B10-2	HOW TO ORDER/ NOMENCLATURE PAGE B10-5		
---------------------------------	---	--	--

SELECTION/DIMENSIONS

SD 3100 TS – Plummer Block Housing (split) Cast Iron GG 25 For Spherical Roller Bearings with Adapter Sleeve



These housings can also be manufactured of ductile iron or cast steel.
Housing sizes SD 3168 up to SD 3188 on request.

Ref. No. Housings with 2 Labyrinth seals w/o Bearings	Part No.	Wt. kg	Dimensions in mm														
			d	D	b	I	H1	H	C	E	e	A	S	S1	S2	x	f
SD 3134 TS	*	65,0	150	230	180	240	335	170	70	430	100	510	24	28	34	78	14
SD 3136 TS	*	75,0	160	240	190	250	355	180	75	450	110	530	24	28	34	83	15
SD 3138 TS	*	95,0	170	260	210	270	375	190	80	480	120	560	24	28	34	88	10
SD 3140 TS	*	120,0	180	280	230	290	410	210	85	510	130	610	30	35	42	93	10
SD 3144 TS	*	135,0	200	290	240	300	435	220	90	540	140	640	30	35	42	100	12
SD 3148 TS	*	180,0	220	310	260	320	475	240	95	600	150	700	30	35	42	106	12
SD 3152 TS	*	215,0	240	320	280	330	515	260	100	650	160	770	36	42	50	116	13
SD 3156 TS	*	250,0	260	320	280	330	550	280	105	670	160	790	36	42	50	119	16
SD 3160 TS	*	300,0	280	350	310	360	590	300	110	710	190	830	36	42	50	125	22
SD 3164 TS	*	330,0	300	370	330	380	630	320	115	750	200	880	36	42	50	135	23

* See page B10-35 for Part Numbers for SD 3100 TS

Corresponding bearings and accessory parts

Reference No. Housings w/o Bearings	Labyrinth Seals	Reference of Bearing and Sleeve *	Fixing rings	Qty.	'O' ring Ø x Length	Grease Qty. First Application kg
SD 3134	TS 34	23134 K/H 3134	FR 10/280	2	4 x 530	1,8
SD 3136	TS 36	23136 K/H 3136	FR 10/300	2	4 x 560	2,2
SD 3138	TS 38	23138 K/H 3138	FR 10/320	2	4 x 590	2,9
SD 3140	TS 40	23140 K/H 3140	FR 10/340	2	4 x 620	3,8
SD 3144	TS 44	23144 K/H 3144 X	FR 10/370	2	4 x 680	4,4
SD 3148	TS 48	23148 K/H 3148 X	FR 10/400	2	4 x 750	5,5
SD 3152	TS 52	23152 K/H 3152 X	FR 10/440	2	4 x 810	7,0
SD 3156	TS 56	23156 K/H 3156 X	FR 10/460	2	4 x 870	7,4
SD 3160	TS 60	23160 K/H 3160 HG	FR 10/500	2	4 x 940	10,5
SD 3164	TS 64	23164 K/H 3164 HG	FR 10/540	2	4 x 1000	13,0

* See page B10-37 for Bearing and Adapter Sleeve Part Numbers.

FEATURES/BENEFITS PAGE B10-2	HOW TO ORDER/ NOMENCLATURE PAGE B10-5	SD 3100 PART NUMBERS PAGE B10-35	
---------------------------------	---	--	--

SELECTION/DIMENSIONS

SD 3100 TS – Part Numbers

SD 3100 SERIES TS/GGG

SD 3134 TS GGG	728806
SD 3134 TS/A GGG	728811
SD 3136 TS GGG	728834
SD 3136 TS/A GGG	728842
SD 3138 TS GGG	728861
SD 3138 TS/A GGG	728864
SD 3140 TS GGG	728901
SD 3140 TS/A GGG	728913
SD 3144 TS GGG	728943
SD 3144 TS/A GGG	728952
SD 3148 TS GGG	728985
SD 3148 TS/A GGG	728990
SD 3152 TS GGG	729014
SD 3152 TS/A GGG	729019
SD 3156 TS GGG	729034
SD 3156 TS/A GGG	729040
SD 3160 TS GGG	729052
SD 3164 TS GGG	729074
SD 3164 TS/A GGG	729079

SD 3100 SERIES TS/GS

SD 3134 TS GS	728807
SD 3134 TS/A GS	728812
SD 3136 TS GS	728836
SD 3136 TS/A GS	728845
SD 3138 TS GS	728862
SD 3138 TS/A GS	728865
SD 3140 TS GS	728903
SD 3140 TS/A GS	728916
SD 3144 TS GS	728945
SD 3144 TS/A GS	728955
SD 3148 TS GS	728987
SD 3148 TS/A GS	728992
SD 3152 TS GS	729015
SD 3152 TS/A GS	729020
SD 3156 TS GS	729035
SD 3156 TS/A GS	729041
SD 3160 TS GS	729054
SD 3160 TS/A GS	729057
SD 3164 TS GS	729076
SD 3164 TS/A GS	729081

- SD 31.. TS GGG = with two labyrinth seals , ductile iron housing
- SD 31.. TS GS = with two labyrinth seals , cast steel housing
- SD 31.. TS/A GG = with one Labyrinth seal and one end cover, cast iron housing
- SD 31.. TS/A GGG = with one Labyrinth seal and one end cover, ductile iron housing
- SD 31.. TS/A GS = with one Labyrinth seal and one end cover, cast steel housing

SELECTION/DIMENSIONS

HSPA – Part Numbers

HSPA BEARING HOUSINGS GS WITH GG END COVER

HSPA 2228 KAF GS	721666
HSPA 2228 KAL GS	721673
HSPA 2228 KBF GS	721679
HSPA 2228 KBL GS	721685
HSPA 3030 KAF GS	738799
HSPA 3030 KAL GS	738800
HSPA 3030 KBF GS	738801
HSPA 3030 KBL GS	738802
HSPA 3032 KAF GS	738803
HSPA 3032 KAL GS	738804
HSPA 3032 KBF GS	738805
HSPA 3032 KBL GS	738806
HSPA 3034 KAF GS	721726
HSPA 3034 KAL GS	721729
HSPA 3034 KBF GS	721732
HSPA 3034 KBL GS	721736
HSPA 3036 KAF GS	721739
HSPA 3036 KAL GS	721740

HSPA 3036 KBF GS	721741
HSPA 3036 KBL GS	721742
HSPA 3038 KAF GS	721747
HSPA 3038 KAL GS	721751
HSPA 3038 KBF GS	721755
HSPA 3038 KBL GS	721758
HSPA 3040 KAF GS	738807
HSPA 3040 KAL GS	738808
HSPA 3040 KBF GS	738809
HSPA 3040 KBL GS	738810
HSPA 3044 KAF GS	738811
HSPA 3044 KAL GS	738812
HSPA 3044 KBF GS	738813
HSPA 3044 KBL GS	738814
HSPA 3052 KAF GS	738815
HSPA 3052 KAL GS	738816
HSPA 3052 KBF GS	738817
HSPA 3052 KBL GS	738818

* See page B10-4 for Nomenclature

FEATURES/BENEFITS PAGE B10-2	HOW TO ORDER/ NOMENCLATURE PAGE B10-5		
---------------------------------	---	--	--



SELECTION/DIMENSIONS

Bearings and Adapters – Part Numbers

BEARING NO.	BEARING PART NO.	SNW/SNP NUMBER	PART NUMBER
22209K	422134	H309-SNW-107	046350
22210K	422137	H310-SNW-111	046351
22211K	422123	H311-SNW-115	046352
22213K	422124	H313-SNW-203	046353
22215K	422001	H315-SNW-207 H315-SNW-208	046354 046355
22216K	422003	H316-SNW-211 H316-SNW-212	046356 046357
22217K	422005	H317-SNW-215 H317-SNW-300	046358 046359
22218K	422007	H318-SNW-303	046360
22220K	422009	H320-SNW-307 H320-SNW-308	046361 046362
22222K	422011	H322-SNW-315 H322-SNW-400	046363 046364
22224K	422013	H324-SNW-403	046430
22226K	422015	H326-SNW-407 H326-SNW-408	046431 046432
22228K	422017	H328-SNW-415 H328-SNW-500	046433 046434
22230K	422019	SNW30-503	043618
22232K	422021	SNW32-507 SNW32-508	043619 043634
22234K	422023	SNW34-515 SNW34-600	043620 043621
22236K	422025	SNW36-607 SNW36-608	043622 043623
22238K	422027	SNW38-615 SNW38-700	043624 043625
22240K	422064	SNW40-703	046545
22244K	422029	SNW44-708 SNW44-715 SNW44-800	043627 043626 043628
23048K	422031	SNP048-807 SNP048-808 SNP048-815 SNP048-900	043629 043630 043631 043632
23052K	422543	SNP052-907 SNP052-908	043585 422538
23056K	422030	SNP056-915 SNP056-1000 SNP056-1007 SNP056-1008	043586 043633 043580 422567

BEARING NO.	BEARING PART NO.	SNW/SNP NUMBER	PART NUMBER
23060K	422582	SNP3060-1015 SNP3060-1100	043581 422576
23064K	422531	SNP3064-1107 SNP3064-1108 SNP3064-1115 SNP3064-1200	043582 043583 043584 422525
23068K	421282	SNP3068-1207 SNP3068-1208	047632 047635
23072K	422036	SNP3072-1215 SNP3072-1300 SNP3072-1307 SNP3072-1308	043635 043636 043637 043638
23076K	422054	SNP3076-1315 SNP3076-1400	043639 043640
23080K	421283	SNP3080-1500	040830
23084K	421284	SNP3084-1512	047636
23152K	421294	H3152-907 H3152-908	047630 047631
23156K	421285	H3156-SNP-1007 H3156-SNP-1008	045431 047637
23160K	421286	H3160-SNP-1015 H3160-SNP-1100	047638 045464
23164K	421287	H3164-SNP-1115 H3164-SNP-1200	047639 050531
23168K	52081	H3168-SNP-1207 H3168-SNP-1208	047641 047642
23172K	421288	H3172-SNP-1307 H3172-SNP-1308	047643 045434
23176K	421289	H3176-SNP-1315 H3176-SNP-1400	047644 047645
23248K	422511	SNP148-815 SNP148-900	047628 047629
23252K	421290	H3252-SNP-907 H3252-SNP-908	047646 047647
23256K	421291	H3256-SNP-1007	047648
23260K	421292	H3260-SNP-1100	047679
23264K	422844	H3264-SNP-1115 H3264-SNP-1200	047680 422843
23268K	421293	H3268-SNP-1207 H3268-SNP-1208	047681 047682

FEATURES/BENEFITS PAGE B10-2	HOW TO ORDER/ NOMENCLATURE PAGE B10-5		
---------------------------------	---	--	--

NOTES



Shaft Dia S-1	Complete Pillow Block Part #	Housing Part No. **	Bearing Part No.	Dynamic Capacity (C), lbs.	Max Rpm LER (Grease)	SNW Part No.	Triple Tect Part No.	TTDN Part No.	LER Part No.	Aux Part No.
1-7/16	CP2B509-USAF-107TT 039575	CH2S-509-USAF 039665	BRG22209KC3 422134	20,800	5,600	H309-SNW-107 046350	08TT107 043578	---	08LER107 042193	
1-11/16	CP2B510--USAF-111TT 039576	CH2S-510-USAF 039666	BRG22210KC3 422137	22,000	5,300	H310-SNW-111 046351	10TT111 043579	---	10LER111 042199	
1-15/16	CP2B511-USAF-115TT 039577	CH2S-511-USAF 039667	BRG22211KC3 422123	27,000	4,500	H311-SNW-115 046352	12TT115 043540	12TTDN115 039582	12LER115 042512	12AUX115 041687
2-3/16	CP2B513-USAF-203TT 039578	CH2S-513-USAF 039668	BRG22213KC3 422124	38,000	3,800	H313-SNW-203 046353	14TT203 043541	14TTDN203 039583	14LER203 042513	14AUX203 041688
	CP4B513-USAF-203TT 039580	CH4S-513-USAF 039670	BRG22213KC3 422124	38,000	3,800	H313-SNW-203 046353	14TT203 043541	14TTDN203 039583	14LER203 042513	14AUX203 041688
2-7/16	CP2B515-USAF-207TT 039581	CH2S-515-USAF 039544	BRG22215KC3 422001	41,500	3,400	H315-SNW-207 046354	20TT207 043542	20TTDN207 039538	20LER207 042514	20AUX207 042380
	CP4B515-USAF-207TT 039582	CH4S-515-USAF 039545	BRG22215KC3 422001	41,500	3,400	H315-SNW-207 046354	20TT207 043542	20TTDN207 039538	20LER207 042514	20AUX207 042380
2-1/2	CP2B515-USAF-208TT 039583	CH2S-515-USAF 039544	BRG22215KC3 422001	41,500	3,400	H315-SNW-208 046355	20TT208 043543	20TTDN208 039854	20LER208 042515	20AUX208 040890
	CP4B515-USAF-208TT 039584	CH4S-515-USAF 039545	BRG22215KC3 422001	41,500	3,400	H315-SNW-208 046355	20TT208 043543	20TTDN208 039854	20LER208 042515	20AUX208 040890
2-11/16	CP2B516-USAF-211TT 039585	CH2S-516-USAF 039671	BRG22216KC3 422003	46,500	3,200	H316-SNW-211 046356	24TT211 043544	24TTDN211 039855	24LER211 042516	24AUX211 042381
	CP4B516-USAF-211TT 039586	CH4S-516-USAF 039672	BRG22216KC3 422003	46,500	3,200	H316-SNW-211 046356	24TT211 043544	24TTDN211 039855	24LER211 042516	24AUX211 042381
2-3/4	CP2B516-USAF-212TT 039587	CH2S-516-USAF 039671	BRG22216KC3 422003	46,500	3,200	H316-SNW-212 046357	24TT212 043545	24TTDN212 039856	24LER212 042517	24AUX212 040891
	CP4B516-USAF-212TT 039588	CH4S-516-USAF 039672	BRG22216KC3 422003	46,500	3,200	H316-SNW-212 046357	24TT212 043545	24TTDN212 039856	24LER212 042517	24AUX212 040891
2-15/16	CP2B517-USAF-215TT 039589	CH2S-517-USAF 039508	BRG22217KC3 422005	58,500	3,000	H317-SNW-215 046358	28TT215 043546	28TTDN215 039530	28LER215 042518	28AUX215 042382
	CP4B517-USAF-215TT 039590	CH4S-517-USAF 039509	BRG22217KC3 422005	58,500	3,000	H317-SNW-215 046358	28TT215 043546	28TTDN215 039530	28LER215 042518	28AUX215 042382
3	CP2B517-USAF-300TT 039591	CH2S-517-USAF 039508	BRG22217KC3 422005	58,500	3,000	H317-SNW-300 046359	28TT300 043547	28TTDN300 039857	28LER300 042519	28AUX300 040918
	CP4B517-USAF-300TT 039592	CH4S-517-USAF 039509	BRG22217KC3 422005	58,500	3,000	H317-SNW-300 046359	28TT300 043547	28TTDN300 039857	28LER300 042519	28AUX300 040918
3-3/16	CP2B518-USAF-303TT 039593	CH2S-518-USAF 039673	BRG22218KC3 422007	64,000	2,600	H318-SNW-303 046360	34TT303 043548	34TTDN303 039858	34LER303 042520	34AUX303 040892
	CP4B518-USAF-303TT 039594	CH4S-518-USAF 039674	BRG22218KC3 422007	64,000	2,600	H318-SNW-303 046360	34TT303 043548	34TTDN303 039858	34LER303 042520	34AUX303 040892
3-7/16	CP2B520-USAF-307TT 039595	CH2S-520-USAF 039675	BRG22220KC3 422009	80,000	2,200	H320-SNW-307 046361	46TT307 043549	46TTDN307 039859	46LER307 042521	46AUX307 042383
	CP4B520-USAF-307TT 039596	CH4S-520-USAF 039676	BRG22220KC3 422009	80,000	2,200	H320-SNW-307 046361	46TT307 043549	46TTDN307 039859	46LER307 042521	46AUX307 042383
3-1/2	CP2B520-USAF-308TT 039597	CH2S-520-USAF 039675	BRG22220KC3 422009	80,000	2,200	H320-SNW-308 046362	46TT308 043550	46TTDN308 039860	46LER308 042522	46AUX308 040919
	CP4B520-USAF-308TT 039598	CH4S-520-USAF 039676	BRG22220KC3 422009	80,000	2,200	H320-SNW-308 046362	46TT308 043550	46TTDN308 039860	46LER308 042522	46AUX308 040919
3-15/16	CP4B522-USAF-305TT 039599	CH4S-522-USAF 039677	BRG22222KC3 422011	102,000	2,000	H322-SNW-315 046363	50TT315 043551	50TTDN315 039861	50LER315 042523	50AUX315 042384
4	CP4B522-USAF-400TT 039600	CH4S-522-USAF 039677	BRG22222KC3 422011	102,000	2,000	H322-SNW-400 046364	50TT400 043552	50TTDN400 039862	50LER400 042524	50AUX400 040893
4-3-16	CP4B524-USAF-403TT 039601	CH4S-524-USAF 039678	BRG22224KC3 422013	120,000	1,900	H3124-SNW-403 046430	52TT403 043553	52TTDN403 039863	52LER403 042525	52AUX403 044360
4-7/16	CP4B526-USAF-407TT 039602	CH4S-526-USAF 039679	BRG22226KC3 422015	143,000	1,800	H3126-SNW-407 046431	54TT407 043554	54TTDN407 039864	54LER407 042526	54AUX407 042385
4-1/2	CP4B526-USAF-408TT 039603	CH4S-526-USAF 039679	BRG22226KC3 422015	143,000	1,800	H3126-SNW-408 046432	54TT408 043555	54TTDN408 039865	54LER408 042527	54AUX408 042386
4-15/16	CP4B528-USAF-415TT 039604	CH4S-528-USAF 039680	BRG22228KC3 422017	166,000	1,700	H3128-SNW-415 046433	56TT415 043556	56TTDN415 039866	56LER415 042528	56AUX415 042387
5	CP4B528-USAF-500TT 039605	CH4S-528-USAF 039680	BRG22228KC3 422017	166,000	1,700	H3128-SNW-500 046434	56TT500 043557	56TTDN500 039867	56LER500 042529	56AUX500 040894
5-3/16	CP4B530-USAF-503TT 039138	CH4S-530-USAF 039217	BRG22231KC3 0422019	190,000	1,600	SNW30X503 043618	58TT503 043558	---	58LER503 042530	
5-7/16	CP4B532-USAF-507TT 039141	CH4S-532-USAF 039218	BRG22232KC3 422021	216,000	1,500	SNW32X507 043619	60TT507 043559	---	60LER507 042531	60AUX507

5-1/2	CP4B532-USAF-508TT 039142	CH4S-532-USAF 039218	BRG22232KC3 422021	216,000	1,500	SNW32X508 043634	60TT508 043574	---	60LER508 042532	60AUX508 040895
5-15/16	CP4B534-USAF-515TT 039147	CH4S-534-USAF 039219	BRG22234KC3 422023	250,000	1,300	SNW32X515 043620	64TT515 043560	---	64LER515 042533	64AUX515 042389
6	CP4B534-USAF-600TT 039148	CH4S-534-USAF 039219	BRG22234KC3 422023	250,000	1,300	SNW34X600 043621	64TT600 043561	---	64LER600 042534	64AUX600 041646
6-7/16	CP4B536-USAF-607TT 039151	CH4S-536-USAF 039220	BRG22236KC3 422025	255,000	1,300	SNW36X607 043622	68TT607 042562	---	68LER607 042535	68AUX607 042390
6-1/2	CP4B536-USAF-608TT 039152	CH4S-536-USAF 039220	BRG22236KC3 422025	255,000	1,300	SNW36X608 043623	68TT608 043563	---	68LER608 042536	68AUX608 042391
6-15/16	CP4B538-USAF-615TT 039155	CH4S-538-USAF 039221	BRG22238KC3 422027	270,000	1,200	SNW38X615 043624	72TT615 043564	---	72LER615 042537	72AUX615 042392
7	CP4B538-USAF-700TT 039156	CH4S-538-USAF 039221	BRG22238KC3 422027	270,000	1,200	SNW38X700 043625	72TT700 043565	---	72LER700 042538	72AUX700 043109
7-3/16	CP4B540-USAF-703TT 039159	CH4S-540-USAF 039222	BRG22240KC3 422064	300,000	900	SNW40X703 046545	74TT703 046421	---	74LER703 043386	74AUX703 040690
7-1/2	CP4B544-USAF-708TT 039160	CH4S-544-USAF 039223	BRG22244KC3 422029	365,000	950	SNW44X708 043627	76TT708 043567	---	76LER708 042539	76AUX708 040896
7-15/16	CP4B544-USAF-715TT 039163	CH4S-544-USAF 039224	BRG22244KC3 422029	365,000	950	SNW44X715 043626	78TT715 043566	---	78LER715 042540	78AUX715 042393*
8	CP4B544-USAF-800TT 039164	CH4S-544-USAF 039224	BRG22244KC3 422029	365,000	950	SNW44X800 043628	78TT800 043568	---	78LER800 042541	78AUX800 042394*
8-7/16	CP4B048-USAF-807TT 039165	CH4S-048-USAF 039225	BRG23048KC3 422031	260,000	800	SNP3048X807 043629	90TT807 043569	---	90LER807 042542	90AUX807 040897*
8-1/2	CP4B048-USAF-808TT 039166	CH4S-048-USAF 039225	BRG23048KC3 422031	260,000	800	SNP3048X808 043630	90TT808 043570	---	90LER808 042543	90AUX808 040898*
8-15/16	CP4B048-USAF-815TT 039167	CH4S-048-USAF 039225	BRG23048KC3 422031	260,000	800	SNP3048X815 043631	90TT815 043571	---	90LER815 042544	
9	CP4B048-USAF-900TT 039167	CH4S-048-USAF 039225	BRG23048KC3 422031	260,000	800	SNP3048X900 043632	90TT900 043572	---	90LER900 042545	90AUX900 040995*
9-7/16	CP4B052-USAF-907TT 039169	CH4S-052-USAF 039226	BRG23052KC3 422543	340,000	750	SNP3052X907 043585	84TT907 043538	---	84LER907 042510	84AUX907 040900*
9-1/2	CP4B052-USAF-908TT 039170	CH4S-052-USAF 039226	BRG23052KC3 422543	340,000	750	SNP3052X908 0422538	84TT908 022545	---	84LER908 042594	84AUX908 040901*
9-15/16	CP4B056-USAF-915TT 039171	CH4S-056-USAF 039227	BRG23056KC3 422030	345,000	700	SNP3056X915 043586	92TT915 043575	---	92LER915 042511	
10	CP4B056-USAF-1000TT 039172	CH4S-056-USAF 039227	BRG23056KC3 422030	345,000	700	SNP3056X1000 043633	92TT1000 043573	---	92LER1000 041082	92AUX1000 042395*
10-7/16	CP4B056-USAF-1007TT 039173	CH4S-056L-USAF 039228	BRG23056KC3 422030	345,000	700	SNP3056X1007 043580	94TT1007 047940	---	94LER1007 042036	
10-1/2	CP4B056-USAF-1008TT 039174	CH4S-056L-USAF 039228	BRG23056KC3 422030	345,000	700	SNP3056X1008 0422567	94TT1008 047941	---	94LER1008 0422573	94AUX1008 042396*