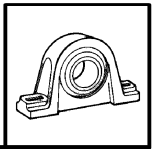
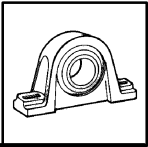


CONTENTS



Sleeve Bearings

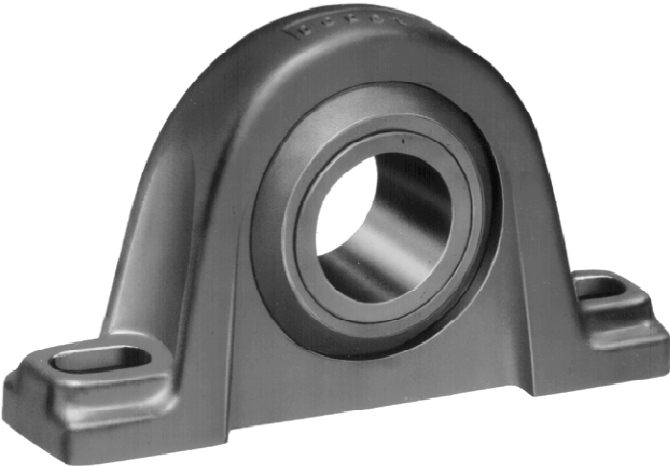
- Features/Benefits B11-2
- Specification B11-4
- How To Order B11-4
- Nomenclature B11-5
- Selection
 - SOLIDLUBE-Inch B11-6
 - SOLIDLUBE-Metric B11-8
 - Babbitted B11-10
 - Bronze-Bushed B11-10
 - BRONZOIL B11-13
- Selection/Dimensions
 - SOLIDLUBE-Inch B11-14
 - SOLIDLUBE-Metric B11-52
 - Babbitted B11-36
 - Bronze-Bushed B11-46
 - BRONZOIL B11-50
- Part Number Index INDEX-1
- Keyword Index INDEX-28



FEATURES/BENEFITS

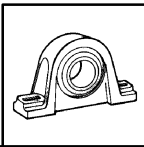
Sleeve Bearings

SOLIDLUBE[®]



Self-Lubricating, Statically Self-Aligning Bearings for Extreme Industrial Applications

- Good in temperature extremes and inaccessible locations.
- Will function effectively in a vacuum.
- Ideal where bearings are subject to dry cycles or where lube systems would be too costly.
- Usable in many corrosive (chemical) medias.
- Will operate in submersible applications of some low viscosity liquids.
- Recommended for slow speeds and limited shaft movement applications.



FEATURES/BENEFITS

Sleeve Bearings

BABBITTED AND BRONZE-BUSHED BEARINGS



GOOD FOR SLOW SPEEDS AND SHOCK LOADS

- MPTA LOAD RATINGS
- Cast Iron Housings
- 2 and 4 Bolt Housings

Babbitted

- Solid or Fully Split Housing
- Babbitted Bearing Surface



Bronzed-Bushed

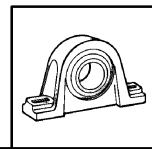
- Fully Split Housing
- Replaceable Bronze Bushings
- Brass Locking Spool for Easy Bushing Replacement

BRONZOIL[®]



- Self Oiling Bushing Feeds Oil to Shaft
- Split Pressed Steel Housing
- Statically Self-Aligning
- Bushing Shoulder Provides Self-Lubricating Bearing Thrust Surface
- Slotted Bolt Holes
- Oil Resistant Rubber Grommets Available for Sound Isolation and Static Electricity Protection

SPECIFICATION/ HOW TO ORDER



SLEEVE BEARINGS

HOW TO ORDER SLEEVE BEARINGS

There are two ways to specify DODGE Sleeve Bearings. Most of the product offering have part numbers with listings shown throughout this catalog. Use of part numbers ensures accurate order processing.

When part numbers are not shown, the product may be specified by description or part name. This method is used when ordering units that include modifications or options. To order by description, use the nomenclature key shown on page 5 and add any special instructions to the end of the description for options not covered by the nomenclature.

SOLIDLUBE

Statically self-aligning, non-galling, solid-film lubricating for temperature extremes.

- 700 Series: -40° to 700°F
- 1,000 Series: -200° to -40°F; 250°F to 1,000°F
- 800 Series: -40° to 800°F

Also suitable for submerged and limited movement applications.

BABBITTED

Grease lubricated for moderate speeds and loads, ambient temperature to 130°F, babbitt accurately bored to insure even load distribution for conveyor shafts, heavy gear, and chain drives use.

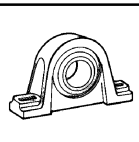
BRONZE-BUSHED

Grease lubricated for moderate speeds, ambient temperature to 300°F and heavy loads or shock loads make the advantage of a precision replaceable bronze bushing desirable. Other liner material is available on a special order basis, such as bronze with graphite plugs, or phenolic resin on nylon.

BRONZOIL

Economical, statically self-aligning, and self-lubricating pillow blocks and four-bolt flange units for fans, light machinery, and other general use.

SELECTION/DIMENSIONS SOLIDLUBE PAGE B11-14	SELECTION/DIMENSIONS SOLIDLUBE-METRIC PAGE B11-52		
--	---	--	--



NOMENCLATURE

Sleeve Bearings

SLEEVE BEARING NOMENCLATURE

P2B - PSEZ - 108 - W

HOUSINGS:

- P2B PILLOW BLOCK, 2 BOLT BASE
- P4B PILLOW BLOCK, 4 BOLT BASE
- F2B FLANGE, 2 BOLT
- F4B FLANGE, 4 BOLT
- HNG HANGER BEARING
- NSTU NARROW SLOT TAKE-UP
- SCHB SCREW CONVEYOR HANGER BEARING
- WSTU WIDE SLOT TAKE-UP
- TB TAPE BASE
- FB FLANGE BRACKET

STYLE:

- BO BRONZOIL
- BASO BABBITTED SOLID
- BASP BABBITTED SPLIT
- BAR BABBITTED RIGID
- BAA BABBITTED ANGLE
- BAP BABBITTED PLATE
- BZSP BRONZE BUSHED SPLIT
- BZR BRONZE BUSHED RIGID
- BZA BRONZE BUSHED ANGLE
- LT7 SOLIDLUBE LT700 SERIES
- LT10 SOLIDLUBE LT1000 SERIES
- LTB7 SOLIDLUBE LOWER BACKING HEIGHT ON PILLOW BLOCKS FOR LT700 SERIES
- LTB10 SOLIDLUBE LOWER BACKING HEIGHT ON PILLOW BLOCKS FOR LT1000 SERIES
- LT7NP SOLIDLUBE LT700 SERIES NICKEL PLATE
- MM7 SOLIDLUBE MM700 SERIES
- MM10 SOLIDLUBE MM1000 SERIES
- PSEZ POLYMER SLEEVE E-Z KLEEN
- PSBEZ POLYMER SLEEVE E-Z KLEEN LOW BACKING HEIGHT
- PSUEZ POLYMER SLEEVE E-Z KLEEN HIGH BACKING HEIGHT
- LM8 SOLIDLUBE LM800 SERIES

MODIFICATIONS/FEATURES:

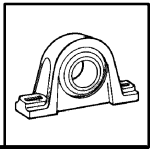
P WHITE POLYMER HOUSING

SHAFT SIZE:

115 FIRST DIGIT: NUMBER OF INCHES SECOND & THIRD DIGIT: SIXTEENTHS OF AN INCH 115 INDICATES 1 15/16

50M FIRST TWO DIGITS: BORE IN MILLIMETERS M INDICATES METRIC

SELECTION/DIMENSIONS BABBITTED PAGE B11-52	SELECTION/DIMENSIONS BRONZE PAGE B11-36	SELECTION/DIMENSIONS BRONZOIL PAGE B11-50	
--	---	---	--



Sleeve Bearings—SOLIDLUBE - Inch

Bearing Size

Select a bearing from tables for normal loads or loads in limited shaft movement applications having a radial load equal to or greater than the actual load. This simple method is all that is required for the majority of general machine applications using commercial steel shafting and operating in a dry atmosphere. (For more favorable conditions, ratings may be increased somewhat; consult factory). Shaft collars may be used for slight amounts of thrust. Generally the rule of 10% of the radial load applies. Dirty environments will reduce bearing life and should be avoided.

Shafting

Commercial steel shafting is good in applications where temperatures do not exceed 700°F. However, for extended bearing life, at any temperature, the shaft should be hardened to 35 Rockwell "C" or better. Shaft finish should be 10 to 20 micro-inches. A finish rougher than .50 will lessen bearing life. A finish smoother than 10 will not allow the optimum lubricant film to develop. Shaft tolerance should be $+.000/-0.002$ for commercial steel shafting. If using other shaft materials, consult DODGE for the shaft tolerance and thermal expansion.

When commercial shafting is exposed to a corrosive media, it will oxidize. A rusty shaft will grow in the bearing, thus eliminating clearances. In this case stainless steel shafting may be used and/or provide for regularly scheduled movement of shaft. In elevated temperatures stainless grades such as 17-4, 15-5, or 13-8 are hardenable. Shafts can be spray coated with ceramic or hard chrome. This is good up to about 800°F. Check with your supplier, since these coatings can flake off when the coefficient of thermal expansion of the base material differs greatly from that of the coating.

High grade specialty shafting may be used in excess of 1000°F. It may be less expensive to use sleeves of this material on more economical shafting.

Noise or High Pitched Squeal

Carbon-graphite bushings can develop a high frequency vibration in resonance with the operating system to cause noise. Dampening or change of resonant frequency of the shaft is required to eliminate noise.

Specials

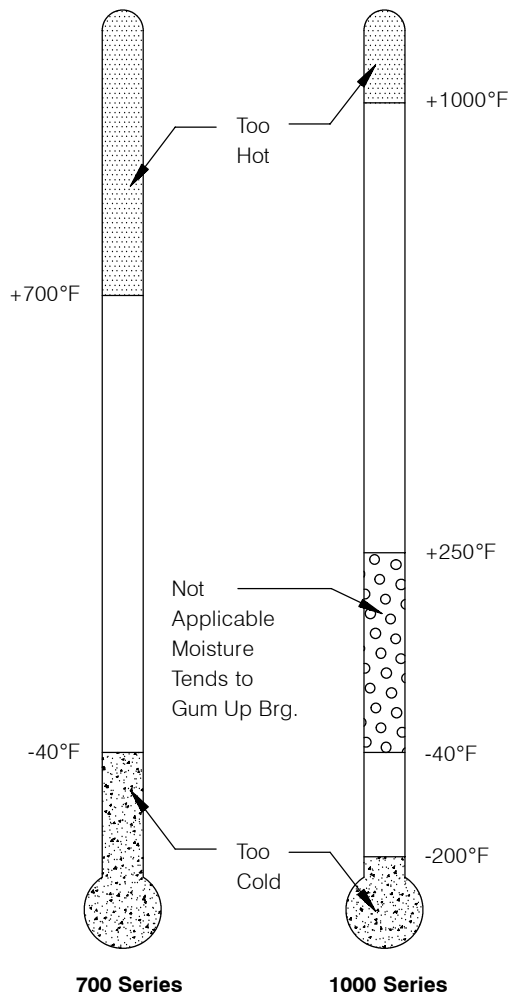
SOLIDLUBE bearings or bearings made from alternate bushing materials such as polymers, fibers, bronze, etc. for unusual operating and load conditions are available on a specially engineered basis by supplying the following:

- Shaft size, material and rpm.
- Normal load, shock load and frequency.
- Direction of load.
- Ambient temperature and atmospheric conditions (water, dirt, corrosive, etc.)
- Type of bearing: pillow block, flange bearing, etc.
- Housing material desired.
- Quantity.

End Closures

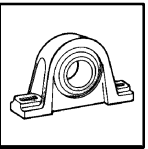
Ball Bearing end Closures are available.

Note: SOLIDLUBE bearings are not designed for rotating housing applications



SOLIDLUBE Bearing Operating Temperature

SELECTION/DIMENSIONS SOLIDLUBE PAGE B11-14			
--	--	--	--



SELECTION

Sleeve Bearings—SOLIDLUBE - Inch

SOLIDLUBE 700,1000 and 800 Series

SOLIDLUBE Bearing 700 and 1000 Radial Load Ratings in Pounds (Normal Loads)

Shaft Size	Radial Load Ratings in Pounds at various Revolutions per Minute Shaft Size												
	Up to 10	25	50	75	100	150	200	250	300	350	400	450	
3/4	560	560	560	560	560	380	285	230	190	165	145	125	
7/8, 15/16, 1	750	750	750	750	610	405	315	245	205	175	155	130	
1-1/8, 1-3/16	1050	1050	1050	908	680	450	340	270	225	190	170	150	
1-1/4, 1-3/8, 1-7/16, 1-1/2	1610	1610	1610	1140	855	570	430	340	280	245	215	190	
1-11/16, 1-3/4	1980	1980	1790	1190	895	595	440	390	295	255	220	200	
1-15/16, 2	2360	2360	1860	1240	930	620	465	370	310	265	235	205	
2-3/16	2870	2870	2010	1340	1000	670	500	400	335	285	250	225	
2-7/16, 2-1/2	3760	3760	2360	1580	1180	795	590	475	390	340	295	265	
2-15/16, 3	5970	5970	3120	2070	1560	1040	780	625	515	445	390	345	
3-7/16, 3-1/2	9100	8010	4000	2670	2000	1340	1000	800	670	570	500	445	
3-15/16, 4	11800	9160	4590	3060	2290	1530	1150	930	765	665	575	510	
4-7/16, 4-1/2	15200	10300	5150	3440	2580	1720	1290	1030	860	740	645	...	
4-15/16, 5	18400	11400	5710	3810	2860	1910	1430	1140	955	815	
Shaft Size	500	550	600	700	800	900	1000	1100	1300	1600	1900	2200	2500
3/4	110	105	96	82	72	64	57	52	44	35	30	26	22
7/8, 15/16, 1	120	110	105	90	80	70	60	54	47	38	32		
1-1/8, 1-3/16	135	125	115	97	85	75	68	62	42	42			
1-1/4, 1-3/8, 1-7/16, 1-1/2	170	155	145	120	105	95	86	78	66				
1-11/16, 1-3/4	180	165	150	130	110	99	89	81					
1-15/16, 2	185	170	155	135	115	105							
2-3/16	200	180	165	145	125								
2-7/16, 2-1/2	235	215	195	170									
2-15/16, 3	345	315	290										
3-7/16, 3-1/2	400	365											

NOTE: The above ratings apply to all base loaded pillow blocks, all cylindrical units and flange type bearings (up to 700°F). For flange bearings operating at temperatures above 700°F, cap and side loading of pillow blocks consult Application Engineering. For operation speeds below heavy line, use LT1000 and/or hardened shaft.

SOLIDLUBE Bearing Corrosion (Chemical) Resistance

Type of Chem.	Chemical	Bearing Series	
		LM800 700	1000
Acids and Acidic Solutions	Mineral (Non-Oxidizing)	★	★
	Mineral (Oxidizing)	■	★
	Inorganic Salts (Acid Forming)	★	★
	Organic (Strong)	★	★
	Organic (Weak) pH 3-7	★	★
	Organic Salts (Acid Forming)	★	★
Alkalis (Bases & Alkaline Solutions)	Mineral (Non-Oxidizing)	★	★
	Mineral(Oxidizing)	s	★
	Inorganic Salts (Base Forming)	★	★
	Organic (Strong)	★	★
	Weak organic Bases pH 7-11	★	★
	Acid	★	★
Gases	Alkaline (Base)	★	★
	Anhydrous (Dew Point below -30°F.)	s	s
	Cryogenic(Liquefied)	■	■
	Inert	★	★
	Oxidizing	■	■
	Reducing	★	★
	Acid Salts	s	s
Salts	Alkaline Salts	s	s
	Metals	★	★
	Neutral Salts	■	■
	Neutral Salt Solutions	★	★
Solvents	Aliphatic	★	★
	Aromatic	★	★
	Chlorinated, Fluorinated	★	★
	Oxygenated, Sulfides	★	★

★ Good. No known interaction; compatible.

s Questionable (depends on conditions).

■ Not recommended.

Note: For compatibility of specific chemicals contact Application Engineering.

700 and 1000 Series SOLIDLUBE Bearing Radial Load Rating in Pounds (Limited Shaft Movement Applications) s

Shaft Size	Max. Radial Load		Max. Thrust
	Base Loaded	Cap or Side Loading	
3/4	1100	775	56
7/8, 15/16, 1	1500	795	75
1-1/8, 1-3/16	2100	820	105
1-1/4, 1-3/8, 1-7/16, 1-1/2	3200	1710	161
1-11/16, 1-3/4	4000	1905	198
1-15/16, 2	4700	1920	236
2-3/16	5700	1900	287
2-7/16, 2-1/2	7500	2360	376
2-15/16, 3	12,000	4151	597

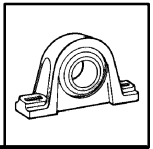
s Use only when shaft movement is limited to approx. ± 90°. Movement is infrequent as opposed to continuous and maximum bearing temperature is 700°F.

LM800

Radial Load Ratings

Bearing Size	Max. Radial Base Load	Max. Radial Cap Load
3/4	560	560
1	750	600
1-1/4	1610	600
1-1/2	1610	600

Note: These load ratings are to be used only when shaft rotation is less than 10 RPM and temperature does not exceed 800°F. Maximum allowable thrust load is 50 lbs.



Sleeve Bearings—SOLIDLUBE—Metric

Bearing Size

Select a bearing from tables for normal loads or loads in limited shaft movement applications having a radial load equal to or greater than the actual load. This simple method is all that is required for the majority of general machine applications using commercial steel shafting and operating in a dry atmosphere. (For more favorable conditions, ratings may be increased somewhat; consult factory). Shaft collars may be used for slight amounts of thrust. Generally the rule of 10% of the radial load applies. Dirty environments will reduce bearing life and should be avoided.

Shafting

Commercial steel shafting is good in applications where temperatures do not exceed 370°C. However, for extended bearing life, at any temperature, the shaft should be hardened to 35 Rockwell "C" or better. Shaft finish should be .25 to .50 micro-meters. A finish rougher than .50 will lessen bearing life. A finish smoother than $R_a .25$ micro-meters will not allow the optimum lubricant film to develop. Shaft tolerance should be $+.000/-0.051$ millimeters for commercial steel shafting. If using other shaft materials, consult DODGE for the shaft tolerance and thermal expansion.

When commercial shafting is exposed to a corrosive media, it will oxidize. A rusty shaft will grow in the bearing, thus eliminating clearances. In this case stainless steel shafting may be used and/or provide for regularly scheduled movement of shaft. In elevated temperatures stainless grades such as 17-4, 15-5, or 13-8 are hardenable. Shafts can be spray coated with ceramic or hard chrome. This is good up to about 425°C. check with your supplier, since these coatings can flake off when the coefficient of thermal expansion of the base material differs greatly from that of the coating.

High grade specialty shafting may be used in excess of 537°C. It may be less expensive to use sleeves of this material on more economical shafting.

Noise or High Pitched Squeal

Carbon-graphite bushings can develop a high frequency vibration in resonance with the operating system to cause noise. Dampening or change of resonant frequency of the shaft is required to eliminate noise.

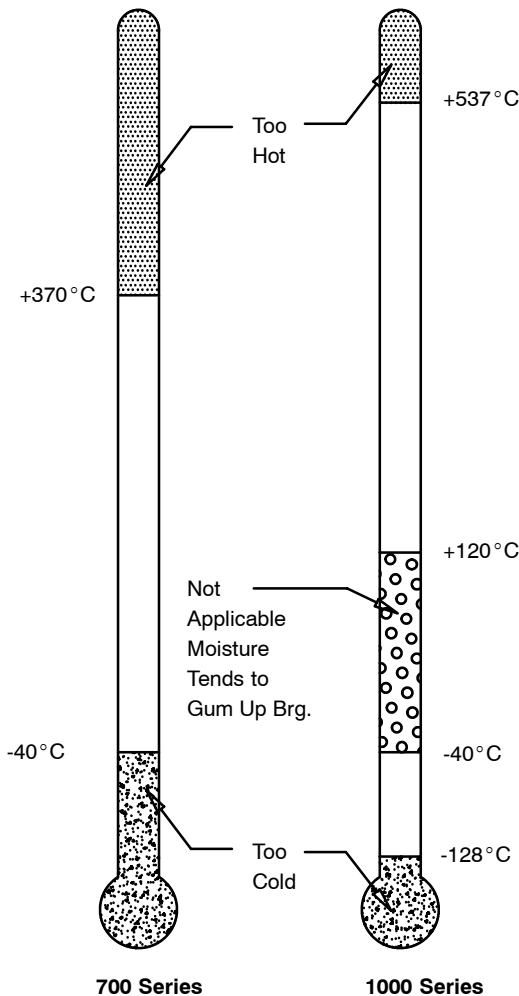
Specials

SOLIDLUBE bearings or bearings made from alternate bushing materials such as polymers, fibers, bronze, etc. for unusual operating and load conditions are available on a specially engineered basis by supplying the following:

- Shaft size, material and rpm.
- Normal load, shock load and frequency.
- Direction of load.
- Ambient temperature and atmospheric conditions (water, dirt, corrosive, etc.)
- Type of bearing: pillow block, flange bearing, etc.
- Housing material desired.
- Quantity.

End Closures

Ball Bearing end Closures are available.

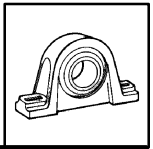


SOLIDLUBE Bearing Operating Temperature

Note: SOLIDLUBE bearings are not designed for rotating housing applications

SELECTION/DIMENSIONS SOLIDLUBE-METRIC PAGE B11-52			
---	--	--	--

SELECTION



Sleeve Bearings—SOLIDLUBE—Metric

SOLIDLUBE Bearing

700 Series and 1000 Series Radial Load Ratings in Newtons N (Normal Loads)
at Various Revolutions per Minute.

Series	Shaft Size	Radial Load Ratings in Newtons at Various Revolutions per Minute											
		10	25	50	75	100	150	200	250	300	350	400	450
204	20mm	2490	2490	2490	2490	2490	1690	1270	1020	840	730	640	560
205	25mm	3340	3340	3340	3340	2710	1800	1400	1090	910	780	690	580
206	30mm	4670	4670	4670	4040	3020	2000	1510	1200	1000	840	760	670
207	35mm	7160	7160	7160	5070	3800	2540	1910	1510	1240	1090	960	840
209	40mm, 45mm	8800	8800	7960	5290	3980	2650	1960	1740	1310	1130	980	890
210	50mm	10500	10500	8270	5520	4140	2760	2070	1650	1380	1180	1040	910
212	60mm	16700	16700	10500	7030	5250	3540	2620	2110	1730	1510	1310	1180
215	70mm, 75mm	26500	26500	13900	9200	6940	4630	3470	2780	2290	1980	1740	1540

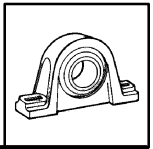
Series	Shaft Size	Radial Load Ratings in Newtons at Various Revolutions per Minute												
		500	550	600	700	800	900	1000	1100	1300	1600	1900	2200	2500
204	20mm	490	470	430	360	320	200	250	230	200	160	130	120	100
205	25mm	530	490	470	400	360	310	270	240	210	170	140		...
206	30mm	600	560	510	430	380	330	300	280	190	190		..	.
207	35mm	760	690	640	530	470	420	380	350	300
209	40mm, 45mm	800	730	670	580	490	440	400	360
210	50mm	820	760	690	600	510	470
212	60mm	1040	960	870	760
215	70mm, 75mm	1530	1400	1290

NOTE: The above ratings apply to all base loaded pillow blocks, all cylindrical units and flange type bearings (up to 370°C). For flange bearings operating at temperatures above 370°C, cap and side loading of pillow blocks consult Applications Engineering. For operation speeds below heavy line, use LT1000 and/or hardened shaft.

SOLIDLUBE Bearings 700 Series and 1000 Series Radial Load Ratings in Newtons N (Limited Shaft Movement Applications) s

Series	Shaft Size	Max. Radial Load		Max. Thrust Load
		Base loaded	Cap or Side Loading	
204	20mm	4890	3450	250
205	25mm	6670	3540	330
206	30mm	9340	3650	470
207	35mm	14200	7600	720
209	40mm, 45mm	17800	8470	880
210	50mm	20900	8540	1050
212	60mm	33400	10500	1670
215	70mm, 75mm	53400	18500	2660

s Use only when shaft movement is Limited to approx. $\pm 90^\circ$.
Movement is infrequent as opposed to continuous and maximum bearing temperature is 370°C.



Sleeve Bearings—Babbitted And Bronze-Bushed

General Information

SCOPE—for Stock Babbitted and Bronze Bushed Bearings, Pillow Blocks and Take-Ups of the Rigid, Grease Lubricated Type.

Important—Referring to Tables 17 and 18 on the opposite page: Table 17 ratings apply to the following DODGE Babbitted Sleeve Bearings:

- Solid Journals
- Split Babbitted Journals
- Rigid Babbitted Pillow Blocks
- Angle Babbitted Pillow Blocks
- Plate Type Flange Bearings
- Type H Take-Ups
- Type A and B Take-Ups

Table 18 ratings apply to DODGE Bronze Bushed Pillow Blocks:

- Split Bronze Bushed Journals
- Rigid Bronze Bushed Pillow Blocks
- Angle Bronze Bushed Pillow Blocks

Note – Ratings do not apply to BRONZOIL, Polymer SLEEVOIL or SOLIDLUBE pillow blocks.

Reference – Flush type reducer bushings to be used with 405015 1/8 NPT grease fitting:

Part No.	Description
430081	1/2 x 1/8
430086	3/8 x 1/8
430087	1/4 x 1/8

Selection – Select a bearing from rating tables having a radial load equal to or greater than the Actual Radial Load, provided that operating conditions numbered 1 thru

7, at right, are met. If these conditions cannot be met, select a bearing for an Equivalent Radial Load to be obtained by multiplying the Actual Radial Load by a service factor depending on the specific application. Use a factor of up to 2.0 for areas in the rating table to the left of the zigzag line. Use a factor of up to 3.0 for areas to the right of the zigzag line.

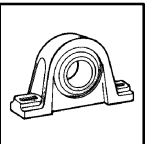
Load ratings are based on industry standard ratings established by the Mechanical Power Transmission Association. (Standard No. 401)

Operating Conditions

1. Maintain adequate grease lubrication.
2. Maintain proper bearing alignment for uniform distribution of load under all operating conditions.
3. Normal running loads must not exceed ratings shown in the load tables. Starting and occasional peak loads should not exceed ratings by more than 100%.
4. Direction of load should not be closer than 30° to grease groove or closer than 30° to the joint between cap and base. If direction of load falls within this area which is not recommended, decrease maximum load by 50%.
5. The shaft journal surface finish must be equal to that of commercial steel shafting (about 32 micro inches) and the diameter within the tolerances of commercial steel shafting.
6. Ambient temperature should not exceed 130°F for babbitted and 300°F for bronze-bushed bearings. If the shaft transmits heat from a source such as an oven, the shaft temperature at the bearing should not exceed these ambient temperatures.
7. Bearings should be protected against adverse operating conditions.

SELECTION/DIMENSIONS BABBITTED PAGE B11-36	SELECTION/DIMENSIONS BRONZE BUSHED PAGE B11-46		
--	--	--	--

SELECTION



Sleeve Bearings—Babbitted And Bronze-Bushed

Radial Load Ratings (Refer to Instructions on opposite page)

Table 17—MPTA Radial Load Ratings for Babbitted Sleeve Bearings

Shaft Sizes	Radial Load Rating in Lbs. at Various Revolutions Per Minute															
	10	50	100	150	200	250	300	350	400	450	500	600	700	800	900	1000
1/2	100	100	100	95	95	95	95	95	90	90	90	85	85	85	80	80
5/8	150	150	145	145	140	140	135	135	135	130	130	125	120	115	110	110
3/4	180	175	175	170	170	165	160	160	155	155	150	145	140	130	125	120
7/8	260	255	250	245	240	235	230	225	220	215	210	200	190	180	150	...
15/16	280	275	265	260	255	250	245	240	235	225	220	210	200	185	105	...
1	295	290	285	280	270	265	260	250	245	240	230	220	205
1-1/8	415	410	400	390	380	370	355	345	335	325	315	295	245
1-3/16, 1-1/4	440	430	420	410	395	385	375	360	350	340	325	305	190
1-5/16, 1-3/8	585	570	555	535	520	505	485	470	455	435	420	345
1-7/16, 1-1/2	640	625	605	585	565	545	525	500	480	460	440	205
1-11/16, 1-3/4	875	850	820	785	755	720	690	655	625	590	340
1-15/16, 2	1150	1110	1060	1010	965	915	865	815	730	335
2-3/16, 2-1/4	1460	1400	1330	1260	1190	1120	1050	975	410
2-7/16, 2-1/2	1800	1730	1630	1530	1430	1340	1240	645
2-11/16, 2-3/4	2190	2080	1950	1820	1690	1560	1150	110
2-15/16, 3	2600	2470	2300	2130	1960	1790	675
3-7/16, 3-1/2	3550	3330	3060	2790	2520	1200
3-15/16, 4	4640	4310	3910	3500	2760
4-7/16, 4-1/2	5870	5410	4830	4250	1410
4-15/16, 5	7240	6600	5810	5010
5-7/16, 5-1/2	8750	7900	6840	4360
5-15/16, 6	10410	9300	7910	2390
6-7/16, 6-1/2	12200	10790	9020
6-15/16, 7	14120	12360	10150
7-7/16, 7-1/2	17270	14950	12050
7-15/16, 8	18390	15750	10710
9	20750	17360	4140
10	22950	18760
12	30700	23190

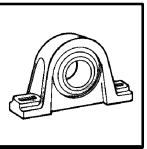
For speeds lower than 10 rpm consult DODGE.

Table 18—MPTA Radial Load Ratings for Bronze Bushed Sleeve Bearings

Shaft Sizes	Radial Load Rating in Lbs. at Various Revolutions Per Minute															
	10	50	100	150	200	250	300	350	400	450	500	600	700	800	900	1000
1/2	170	170	165	165	165	165	165	160	160	160	160	155	155	150	150	145
5/8	250	250	245	245	245	240	240	235	235	235	230	225	220	220	215	210
3/4	300	300	295	295	290	285	285	280	280	275	270	265	260	255	250	240
7/8	435	430	425	420	415	410	405	400	395	390	385	375	365	355	325	245
15/16	465	460	455	450	445	435	430	425	420	415	410	395	385	375	295	200
1	495	490	485	480	470	465	460	450	445	440	430	420	405	360	255	150
1-1/8	700	690	680	670	660	650	640	630	620	605	595	575	525	360	195	...
1-3/16, 1-1/4	735	730	715	705	695	680	670	660	645	635	625	600	485	300	115	...
1-5/16, 1-3/8	980	965	950	930	915	895	880	865	845	830	815	735	465	195
1-7/16, 1-1/2	1070	1050	1030	1010	995	975	955	935	915	895	875	635	315
1-11/16, 1-3/4	1470	1440	1410	1370	1340	1310	1280	1240	1210	1180	930	410
1-15/16, 2	1920	1880	1830	1790	1740	1690	1640	1590	1500	1110	715
2-3/16, 2-1/4	2440	2390	2320	2240	2170	2100	2030	1960	1390	830	265
2-7/16, 2-1/2	3020	2940	2850	2750	2650	2560	2460	1860	1090
2-11/16, 2-3/4	3660	3560	3430	3300	3170	3040	2620	1580	545
2-15/16, 3	4370	4230	4060	3890	3720	3550	2440
3-7/16, 3-1/2	5960	5740	5470	5200	4930	3610	1440
3-15/16, 4	7790	7460	7060	6650	5910
4-7/16, 4-1/2	9860	9400	8820	8240	5400
4-15/16, 5	12180	11540	10740	9950	4090
5-7/16, 5-1/2	14740	13880	12820	10340	1820
5-15/16, 6	17530	16420	15040	9520
6-7/16, 6-1/2	20560	19150	17390	7900
6-15/16, 7	23840	22070	19870	5350
7-7/16, 7-1/2	29170	26850	23950	1880
7-15/16, 8	31090	28450	23410
9	35150	31760	18540
10	38950	34760	2220
12	52300	45520

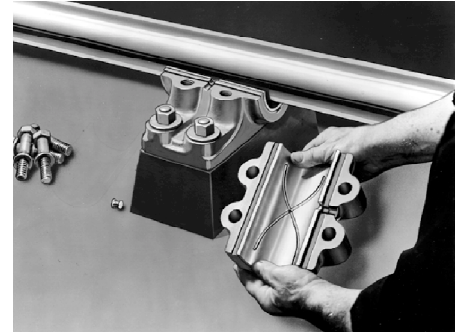
For speeds lower than 10 rpm consult DODGE.

SELECTION/DIMENSIONS BABBITTED PAGE B11-36	SELECTION/DIMENSIONS BRONZE BUSHED PAGE B11-46		
--	--	--	--



SELECTION

Sleeve Bearings—Bronze Bushings



U.S. Patent No. 3,071,419

- For Split Bronze Bushed Journal Bearings.
- For Rigid Bronze Bushed Pillow Blocks.
- For Angle Bronze Bushed Pillow Blocks.

These precision bushings are machined from quality cast cylinders of high grade leaded bronze. They are furnished in matched halves and sold in complete sets only. Grease grooves are provided in the top half for proper lubrication. Bushings are designed to be installed in the bearings listed above without removing the shaft or bearing base. A brass locking spool positions the bushing preventing lateral movement or rotation. This simple method minimizes down time and labor costs. They are particularly suited for heavy loads, elevated temperatures and corrosive conditions.

Bushings made of special alloys can be furnished where especially difficult heat problems may arise. They will be priced on application.

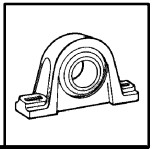
Bronze Bushing Sets ♣

Shaft Size	Bushings Sets†		Locking Spools*
	Part No.	Wt.	Part No.
1-15/16	005055	1.7	005050
2-3/16	005056	2.1	
2-7/16	005057	2.5	
2-11/16	005058	3.1	
2-15/16	005059	3.6	
3-7/16	005060	4.9	
3-15/16	005061	9.7	005051
4-7/16	005062	14	
4-15/16	005063	15	
5-7/16	005064	18	005052
5-15/16	005065	21	
6-1/2	005066	28	005053
7	005067	33	
7-1/2	005117	37	
8	005068	42	

♣ For other bushing material consult DODGE

† Price is for one bushing set which includes upper and lower half. Bushings are sold in complete sets only.

* Order separately if desired.



SELECTION

Sleeve Bearings—BRONZOIL

RADIAL LOAD RATINGS FOR BRONZOIL SLEEVE BEARINGS

Shaft Sizes	Radial Load Rating in Lbs. at Various Revolutions Per Minute					
	50	100	200	500	1000	1500
1/2	230	225	220	175	120	110
5/8	250	240	230	180	125	105
3/4	260	250	240	185	130	100
7/8	280	270	260	190	145	95
15/16	380	360	290	200	150	90
1	420	400	300	210	160	85
1-3/16	500	475	395	250	135	115
1-1/4	525	500	415	260	140	120

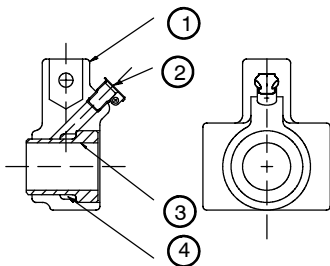
Shaft Sizes	Radial Load Rating in Lbs. at Various Revolutions Per Minute				
	2000	2500	3000	3500	4000
1/2	90	80	60	50	45
5/8	80	65	55	45	35
3/4	70	55	50	35	...
7/8	60	50	45
15/16	55	45	40
1	50	40
1-3/16	60
1-1/4	63

BRONZOIL Take-Up Bearing Assembly					
Size	(TUBO—) Assy.No.	1	2	3	4
1/2	034030	034001	405046	034013	444010
5/8	034031	034001	405046	034014	444010
3/4	034032	034001	405046	034015	444010
7/8	034033	034002	405046	034016	444010
15/16	034034	034002	405046	034017	444010
1	034035	034002	405046	034018	444010

Select a bearing from the rating tables having a radial load equal to or greater than the actual load providing normal operating conditions are met. If these conditions cannot be met, select a bearing for an equivalent radial load to be obtained by multiplying the actual radial load by a 2.0 to 4.0 service factor—depending on specific application.

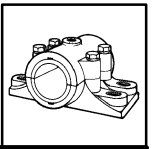
Normal Operating Conditions:

1. Adequate oil supply.
2. Proper bearing alignment for uniform distribution of load at all operating conditions.
3. No shock loading.
4. No adversely high operating conditions.
5. No moist, corrosive, or abrasive atmosphere.
6. Shaft surface finish must be equal to that of commercial steel shafting. (About 32 micro inches)
7. Shaft diameter within the tolerance of commercial steel shafting.



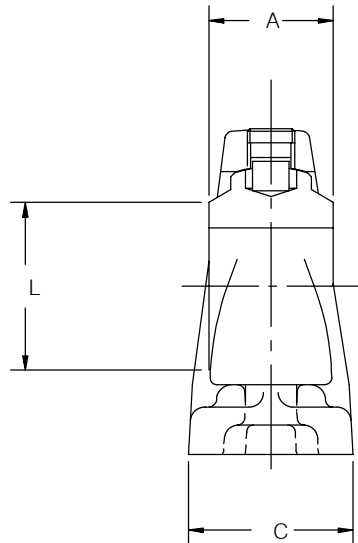
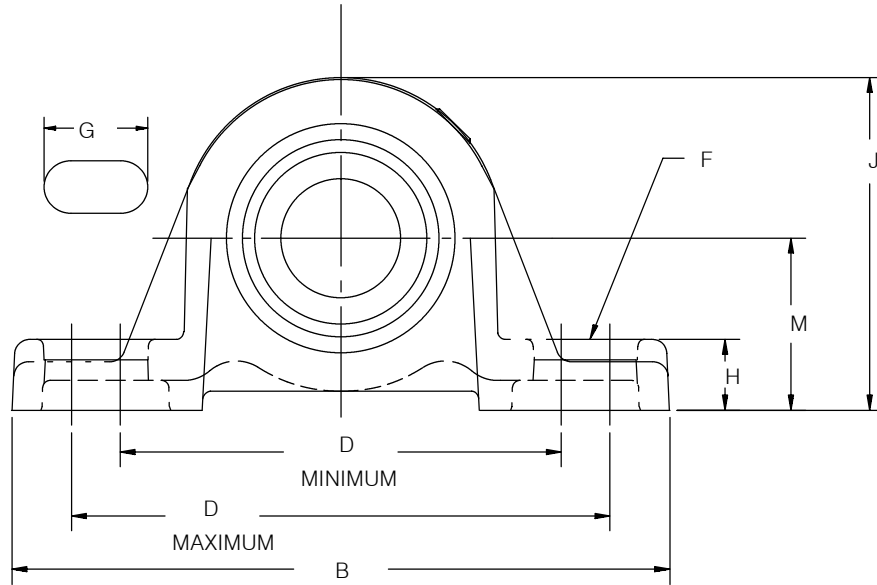
1. BRONZOIL Housing
2. BRONZOIL Take-Up Oil Cup
3. BRONZOIL Bushing
4. BRONZOIL Permawick

SELECTION/DIMENSIONS



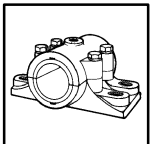
Sleeve Bearings—SOLIDLUBE—Inch

3/4" THRU 3" SOLIDLUBE LT PILLOW BLOCKS



FEATURES/BENEFITS PAGE B11-2	HOW TO ORDER/ NOMENCLATURE PAGE B11-4		
---------------------------------	---	--	--

SELECTION/DIMENSIONS



Sleeve Bearings–SOLIDLUBE–Inch

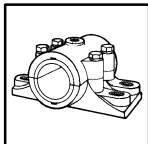
3/4" THRU 3" SOLIDLUBE LT PILLOW BLOCKS

Series	Shaft Size	700 SERIES			1000 SERIES			Used on Frame
		Part Number	Description	Wt.	Part Number	Description	Wt.	
204	3/4	033667	P2B-LT7-012	1.7	033977	P2B-LT10-012	1.7	LD-10
205	7/8	033668	P2B-LT7-014	1.6	033978	P2B-LT10-014	1.6	LD-10
	15/16	033669	P2B-LT7-015	1.5	033979	P2B-LT10-015	1.5	
	1	033670	P2B-LT7-100	1.4	033980	P2B-LT10-100	1.4	
206	1-1/8	033672	P2B-LT7-102	2.8	033982	P2B-LT10-102	2.8	LD-20
	1-3/16	033673	P2B-LT7-103	2.7	033983	P2B-LT10-103	2.7	
207	1-1/4	033674	P2B-LT7-104	4.2	033984	P2B-LT10-104	4.2	LD-20
	1-3/8	033676	P2B-LT7-106	3.9	033986	P2B-LT10-106	3.9	
	1-7/16	033677	P2B-LT7-107	3.8	033987	P2B-LT10-107	3.8	
	1-1/2	033678	P2B-LT7-108	3.7	033988	P2B-LT10-108	3.7	
209	1-11/16	033680	P2B-LT7-111	6.0	033990	P2B-LT10-111	6.0	LD-20
	1-3/4	033681	P2B-LT7-112	5.8	033991	P2B-LT10-112	5.8	
210	1-15/16	033682	P2B-LT7-115	6.8	033992	P2B-LT10-115	6.8	LD-30
	2	033683	P2B-LT7-200	6.6	033993	P2B-LT10-200	6.6	
211	2-3/16	033684	P2B-LT7-203	8.0	033994	P2B-LT10-203	8.0	LD-40
212	2-7/16	033686	P2B-LT7-207	10.1	033996	P2B-LT10-207	10.1	LD-40
	2-1/2	033687	P2B-LT7-208	9.8	033997	P2B-LT10-208	9.8	
215	2-15/16	033688	P2B-LT7-215	21.2	033998	P2B-LT10-215	21.2	LD-45
	3	033077	P2B-LT7-300	20.9	033974	P2B-LT10-300	20.9	

Series	Shaft Size	A	B	C	D		F Bolt Dia.	G	H	J	L	M
					Min.	Max.						
204	3/4	1	5-1/4	1-11/32	3-3/8	4-3/16	3/8	27/32	17/32	2-9/16	1-3/8	1-5/16
205	7/8	1-1/16	5-1/2	1-13/32	3-11/16	4-1/2	3/8	27/32	19/32	2-25/32	1-9/16	1-7/16
	15/16											
206	1-1/8	1-3/16	6-1/4	1-3/4	4-1/4	5	1/2	15/16	11/16	3-1/4	1-13/16	1-5/8
	1-3/16											
207	1-1/4	1-5/16	6-1/2	1-3/4	4-11/16	5-7/16	1/2	15/16	23/32	3-3/4	2-1/8	1-7/8
	1-3/8											
	1-7/16											
	1-1/2											
209	1-11/16	1-9/16	7-7/16	2	5-1/2	6-3/16	1/2	29/32	3/4	4-9/32	2-9/16	2-1/8
210	1-15/16	1-5/8	8-1/8	2-1/4	6	6-11/16	5/8	1-1/32	3/4	4-17/32	2-13/16	2-1/4
	2											
211	2-3/16	1-3/4	8-7/8	2-5/16	6-3/8	7-7/16	5/8	1-7/32	7/8	4-31/32	3-1/8	2-1/2
212	2-7/16	1-13/16	9-1/2	2-3/8	6-7/8	7-15/16	5/8	1-7/32	7/8	5-13/32	3-1/2	2-3/4
	2-1/2											
215	2-15/16	2-23/32	11-3/4	2-7/8	8-1/2	9-1/2	7/8	1-7/16	1	6-3/4	3-15/16	3-1/2

The LT and LTB Blocks are Identical Except the LTB blocks Have Lower Backing Dimensions.

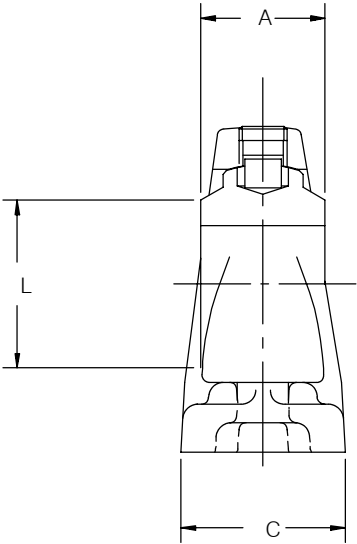
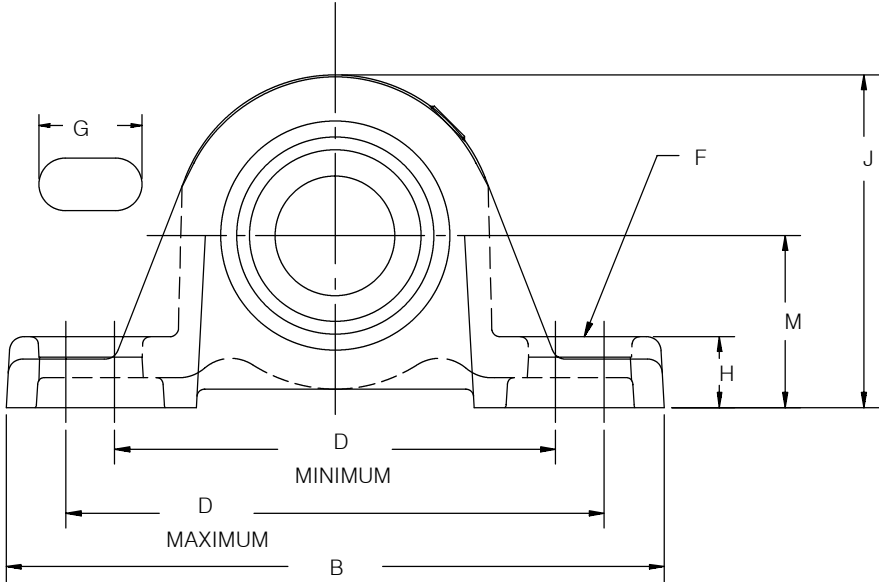
FEATURES/BENEFITS PAGE B11-2	HOW TO ORDER/ NOMENCLATURE PAGE B11-4	SELECTION PAGE B11-6	METRIC PAGE B11-53
---------------------------------	---	-------------------------	-----------------------



SELECTION/DIMENSIONS

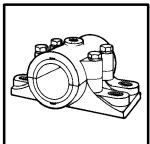
Sleeve Bearings–SOLIDLUBE–Inch

3/4" THRU 3" SOLIDLUBE LTB PILLOW BLOCKS



FEATURES/BENEFITS PAGE B11-2	HOW TO ORDER/ NOMENCLATURE PAGE B11-4	SELECTION PAGE B11-6	METRIC PAGE B11-52
---------------------------------	---	-------------------------	-----------------------

SELECTION/DIMENSIONS



Sleeve Bearings–SOLIDLUBE–Inch

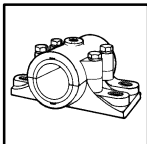
3/4" THRU 3" SOLIDLUBE LTB PILLOW BLOCKS

Series	Shaft Size	700 SERIES			1000 SERIES			Used on Frame
		Part Number	Description	Wt.	Part Number	Description	Wt.	
204	3/4	032940	P2B-LTB7-012	1.6	032970	P2B-LTB10-012	1.6	LD-10
205	7/8	032941	P2B-LTB7-014	1.5	032971	P2B-LTB10-014	1.5	LD-10
	15/16	032942	P2B-LTB7-015	1.4	032972	P2B-LTB10-015	1.4	
	1	032943	P2B-LTB7-100	1.3	032973	P2B-LTB10-100	1.3	
206	1-1/8	032945	P2B-LTB7-102	2.7	032975	P2B-LTB10-102	2.7	LD-20
	1-3/16	032946	P2B-LTB7-103	2.6	032976	P2B-LTB10-103	2.6	
207	1-1/4	032947	P2B-LTB7-104	4.0	032977	P2B-LTB10-104	4.0	LD-20
	1-3/8	032949	P2B-LTB7-106	3.8	032979	P2B-LTB10-106	3.8	
	1-7/16	032950	P2B-LTB7-107	3.7	032980	P2B-LTB10-107	3.7	
	1-1/2	032951	P2B-LTB7-108	3.6	032981	P2B-LTB10-108	3.6	
209	1-11/16	032953	P2B-LTB7-111	5.0	032983	P2B-LTB10-111	5.0	LD-20
	1-3/4	032954	P2B-LTB7-112	4.8	032984	P2B-LTB10-112	4.8	
210	1-15/16	032955	P2B-LTB7-115	6.0	032985	P2B-LTB10-115	6.0	LD-30
	2	032956	P2B-LTB7-200	5.8	032986	P2B-LTB10-200	5.8	
211	2-3/16	032957	P2B-LTB7-203	6.5	032987	P2B-LTB10-203	6.5	LD-40
212	2-7/16	032959	P2B-LTB7-207	8.1	032989	P2B-LTB10-207	8.1	LD-40
	2-1/2	032960	P2B-LTB7-208	7.8	032990	P2B-LTB10-208	7.8	
215	2-15/16	P2B-LTB7-215	P2B-LTB10-215	...	LD-45
	3	P2B-LTB7-300	P2B-LTB10-300	...	

Series	Shaft Size	A	B	C	D		F Bolt Dia.	G	H	J	L	M
					Min.	Max.						
204	3/4	1	5-1/4	1-11/32	3-3/8	4-3/16	3/8	27/32	15/32	2-1/2	1-3/8	1-1/4
205	7/8	1-1/16	5-1/2	1-13/32	3-11/16	4-1/2	3/8	27/32	15/32	2-21/32	1-9/16	1-5/16
	15/16											
206	1-1/8	1-3/16	6-1/4	1-3/4	4-1/4	5	1/2	15/16	5/8	3-3/16	1-13/16	1-9/16
	1-3/16											
207	1-1/4	1-5/16	6-1/2	1-3/4	4-11/16	5-7/16	1/2	15/16	21/32	3-11/16	2-1/8	1-13/16
	1-3/8											
	1-7/16											
	1-1/2											
209	1-11/16	1-9/16	7-7/16	2	5-1/2	6-3/16	1/2	29/32	11/16	4-7/32	2-9/16	2-1/16
	1-3/4											
210	1-15/16	1-5/8	8-1/8	2-1/4	6	6-11/16	5/8	1-1/32	11/16	4-15/32	2-13/16	2-3/16
211	2-3/16	1-3/4	8-7/8	2-5/16	6-3/8	7-7/16	5/8	1-7/32	13/16	4-29/32	3-1/8	2-7/16
212	2-7/16	1-13/16	9-1/2	2-3/8	6-7/8	7-15/16	5/8	1-7/32	13/16	5-11/32	3-1/2	2-11/16
215	2-15/16	2-23/32	11-3/4	2-7/8	8-1/2	9-1/2	7/8	1-7/16	3-15/16	...
	3											

The LT and LTB Pillow Blocks are Identical Except the LTB Pillow blocks Have Lower Backing Dimensions.

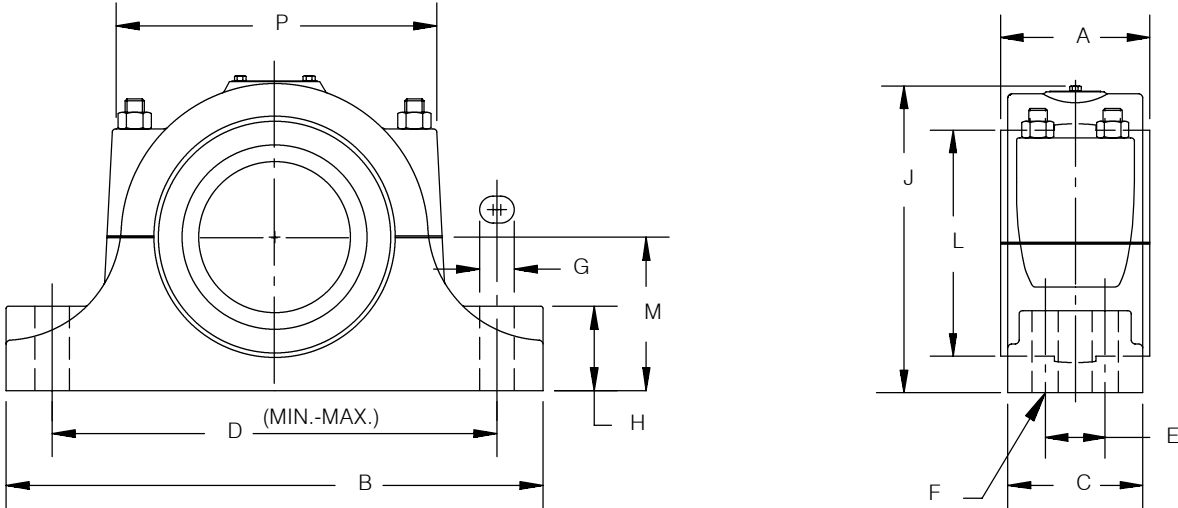
FEATURES/BENEFITS PAGE B11-2	HOW TO ORDER/ NOMENCLATURE PAGE B11-4	SELECTION PAGE B11-6	METRIC PAGE B11-53
---------------------------------	---	-------------------------	-----------------------



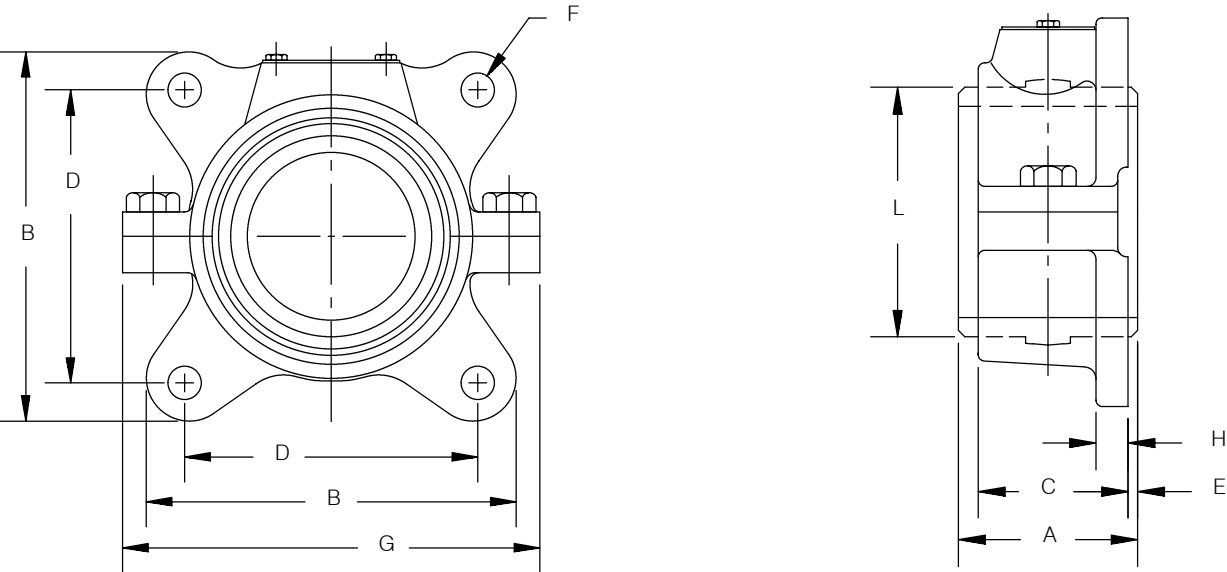
SELECTION/DIMENSIONS

Sleeve Bearings–SOLIDLUBE–Inch

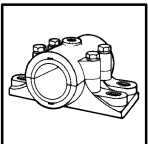
3-7/16" THRU 5" SOLIDLUBE MM PILLOW BLOCKS



3-7/16" THRU 5" SOLIDLUBE MM 4-BOLT FLANGE BEARING



FEATURES/BENEFITS PAGE B11-2	HOW TO ORDER/ NOMENCLATURE PAGE B11-4	SELECTION PAGE B11-6	
---------------------------------	---	-------------------------	--



SELECTION/DIMENSIONS

Sleeve Bearings–SOLIDLUBE–Inch 3-7/16” THRU 5” SOLIDLUBE MM PILLOW BLOCKS

Shaft Size	700 Series		1000 Series		Wt.	Used On Frame	A	B	C
	Part No.	Description	Part No.	Description					
3-7/16	033247	P2B-MM7-307	033347	P2B-MM10-307	23.0	HD-250	3-1/2	12	2-13/16
3-1/2	033251	P2B-MM7-308	033351	P2B-MM10-308	22.8				
3-15/16	033475	P2B-MM7-315	033480	P2B-MM10-315	36.0	HD-300	4	13-7/16	3-3/16
4	033485	P2B-MM7-400	033490	P2B-MM10-400	35.8				
4-7/16	033500	P2B-MM7-407	033505	P2B-MM10-407	60.0	HD-350	4-1/2	16	3-11/16
4-1/2	033510	P2B-MM7-408	033515	P2B-MM10-408	59.7				
4-15/16	033525	P4B-MM7-415	033530	P4B-MM10-415	92.0	HD-400	5	17-7/16	4-3/4
5	033535	P4B-MM7-500	033540	P4B-MM10-500	91.5				

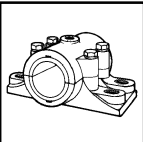
Shaft Size	D	D	2 Bolt Base		4 Bolt Base		G	H	J	L	M	P
	Min.	Max.	F Bolt Dia.	E	F Bolt Dia.							
3-7/16	9-1/4	10-1/4	5/8	1-1/4	1-3/4	7	4-7/8	3-1/4	7- 1/4	
3-1/2	9-7/8	11-1/2	3/4	1-11/16	2	7-15/16	5-5/8	3-3/4	8-3/16	
3-15/16	9-7/8	11-1/2	3/4	1-11/16	2	7-15/16	5-5/8	3-3/4	8-3/16	
4	9-7/8	11-1/2	3/4	1-11/16	2	7-15/16	5-5/8	3-3/4	8-3/16	
4-7/16	12-13/16	13-13/16	7/8	1-1/2	2-1/4	9-7/16	6-15/16	4-1/2	10	
4-1/2	12-13/16	13-13/16	7/8	1-1/2	2-1/4	9-7/16	6-15/16	4-1/2	10	
4-15/16	13-1/8	14-3/4	...	2	3/4	1-11/16	2-3/4	10-1/2	7-9/16	5	10-5/8	
5	13-1/8	14-3/4	...	2	3/4	1-11/16	2-3/4	10-1/2	7-9/16	5	10-5/8	

3-7/16” THRU 5” SOLIDLUBE MM 4-BOLT FLANGE BEARING

Shaft Size	700 Series		1000 Series		Wt.
	Part Number	Description	Part Number	Description	
3-7/16	033323	F4B-MM7-307	033868	F4B-MM10-307	17.0
3-1/2	033321	F4B-MM7-308	033931	F4B-MM10-308	18.0
3-15/16	032923	F4B-MM7-315	033899	F4B-MM10-315	26.0
4	032937	F4B-MM7-400	033932	F4B-MM10-400	
4-7/16	033862	F4B-MM7-407	033933	F4B-MM10-407	42.0
4-1/2	033863	F4B-MM7-408	033934	F4B-MM10-408	
4-15/16	033929	F4B-MM7-415	033869	F4B-MM10-415	62.0
5	033930	F4B-MM7-500	033867	F4B-MM10-500	

Shaft Size	A	B	C	D	E	F	G	H	L
3-7/16	3-1/2	7-5/8	2-59/64	6	3/16	5/8	8-9/16	5/8	4- 7/8
3-1/2	3-1/2	7-5/8	2-59/64	6	3/16	5/8	8-9/16	5/8	4- 7/8
3-15/16	4	8-7/8	3-11/32	6-7/8	1/4	3/4	9-1/2	11/16	5- 5/8
4	4	8-7/8	3-11/32	6-7/8	1/4	3/4	9-1/2	11/16	5- 5/8
4-7/16	4-1/2	10-1/4	3-23/32	8-1/8	1/4	7/8	11-3/8	3/4	6-15/16
4-1/2	4-1/2	10-1/4	3-23/32	8-1/8	1/4	7/8	11-3/8	3/4	6-15/16
4-15/16	5	11-7/16	4- 5/8	9-3/16	1/8	1	12-7/8	13/16	7- 9/16
5	5	11-7/16	4- 5/8	9-3/16	1/8	1	12-7/8	13/16	7- 9/16

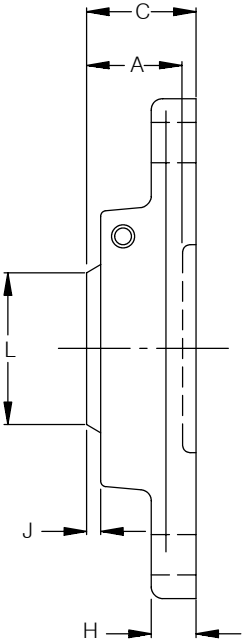
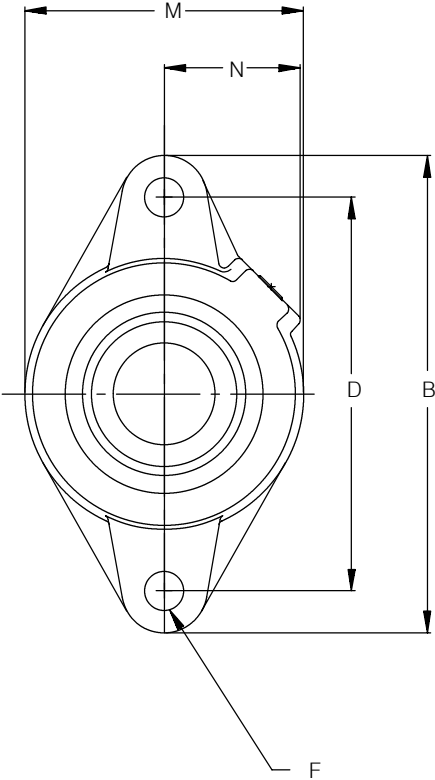
FEATURES/BENEFITS PAGE B11-2	HOW TO ORDER/ NOMENCLATURE PAGE B11-4	SELECTION PAGE B11-6	
---------------------------------	---	-------------------------	--



SELECTION/DIMENSIONS

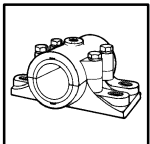
Sleeve Bearings–SOLIDLUBE–Inch

3/4" THRU 2" SOLIDLUBE LT 2-BOLT FLANGE BEARING



FEATURES/BENEFITS PAGE B11-2	HOW TO ORDER/ NOMENCLATURE PAGE B11-4	SELECTION PAGE B11-6	SELECTION/DIMENSIONS METRIC PAGE B11-54
---------------------------------	---	-------------------------	---

SELECTION/DIMENSIONS



Sleeve Bearings–SOLIDLUBE–Inch

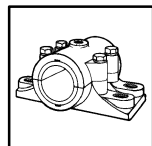
3/4" THRU 2" SOLIDLUBE LT 2-BOLT FLANGE BEARING

Series	Shaft Size	700 Series			1000 Series		
		Part Number	Description	Wt.	Part Number	Description	Wt.
204	3/4	033085	F2B-LT7-012	1.2	033185	F2B-LT10-012	1.2
205	7/8	033086	F2B-LT7-014	1.7	033186	F2B-LT10-014	1.7
	15/16	033087	F2B-LT7-015	1.6	033187	F2B-LT10-015	1.6
	1	033088	F2B-LT7-100	1.5	033188	F2B-LT10-100	1.5
206	1-1/8	033089	F2B-LT7-102	2.2	033189	F2B-LT10-102	2.2
	1-3/16	033090	F2B-LT7-103	2.1	033190	F2B-LT10-103	2.1
207	1-1/4	033091	F2B-LT7-104	3.6	033191	F2B-LT10-104	3.6
	1-3/8	033092	F2B-LT7-106	3.3	033192	F2B-LT10-106	3.3
	1-7/16	033093	F2B-LT7-107	3.2	033193	F2B-LT10-107	3.2
	1-1/2	033094	F2B-LT7-108	3.1	033194	F2B-LT10-108	3.1
209	1-11/16	033095	F2B-LT7-111	4.9	033195	F2B-LT10-111	4.9
	1-3/4	033096	F2B-LT7-112	4.7	033196	F2B-LT10-112	4.7
210	1-15/16	033097	F2B-LT7-115	5.4	033197	F2B-LT10-115	5.4
	2	033098	F2B-LT7-200	5.2	033198	F2B-LT10-200	5.2

Series	Shaft Size	A	B	C	D	F Bolt Dia.	H	J	L	M	N
204	3/4	29/32	4-13/16	1-1/8	3-17/32	3/8	1/2	5/32	1-3/8	2-3/8	1-1/2
205	7/8	63/64	4-7/8	1-7/64	3-57/64	7/16	1/2	5/32	1-9/16	2-3/4	1-7/16
	15/16										
	1										
206	1-1/8	1-7/64	5-9/16	1-7/32	4-19/32	7/16	1/2	5/32	1-13/16	3-1/8	1-9/16
	1-3/16										
207	1-1/4	1-7/32	6-1/8	1-3/8	5-1/8	1/2	9/16	1/4	2-1/8	3-3/4	1-27/32
	1-3/8										
	1-7/16										
	1-1/2										
209	1-11/16	1-11/32	7-1/16	1-19/32	5-27/32	1/2	5/8	3/16	2-9/16	4-3/8	1-29/32
	1-3/4										
210	1-15/16	1-13/32	7-7/16	1-21/32	6-3/16	1/2	5/8	3/16	2-13/16	4-9/32	2-1/32
	2										

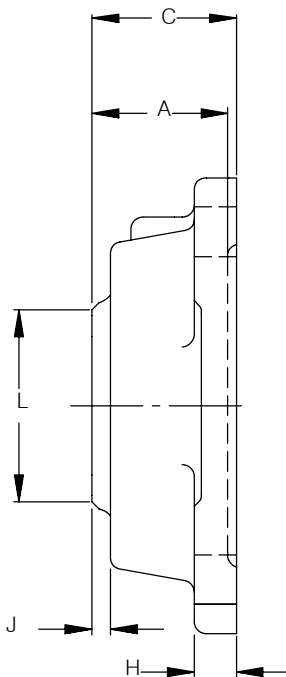
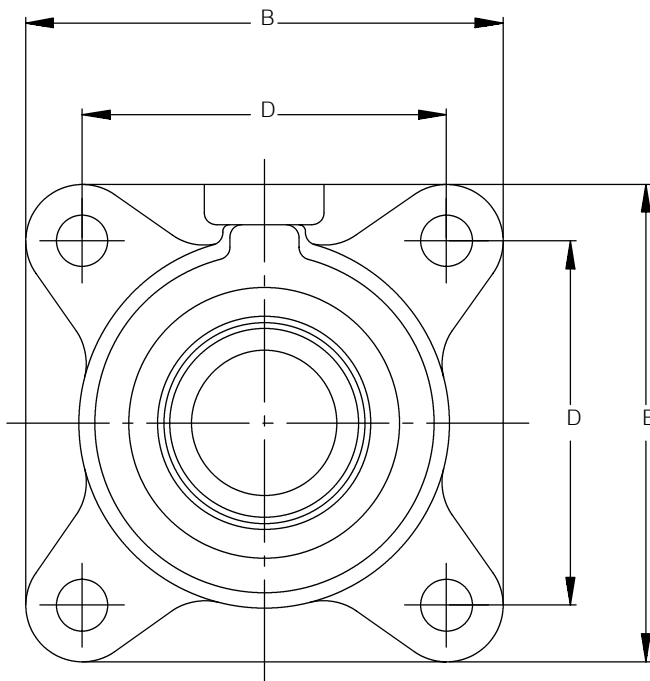
FEATURES/BENEFITS PAGE B11-2	HOW TO ORDER/ NOMENCLATURE PAGE B11-4	SELECTION PAGE B11-6	SELECTION/DIMENSIONS METRIC PAGE B11-55
---------------------------------	---	-------------------------	---

SELECTION/DIMENSIONS



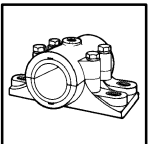
Sleeve Bearings–SOLIDLUBE–Inch

3/4" THRU 3" SOLIDLUBE LT 4-BOLT FLANGE BEARING



FEATURES/BENEFITS PAGE B11-2	HOW TO ORDER/ NOMENCLATURE PAGE B11-4	SELECTION PAGE B11-6	SELECTION/DIMENSIONS METRIC PAGE B11-54
---------------------------------	---	-------------------------	---

SELECTION/DIMENSIONS



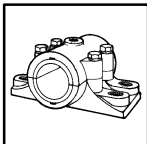
Sleeve Bearings–SOLIDLUBE–Inch

3/4" THRU 3" SOLIDLUBE LT 4-BOLT FLANGE BEARING

Series	Shaft Size	700 Series			1000 Series		
		Part Number	Description	Wt.	Part Number	Description	Wt.
204	3/4	033260	F4B-LT7-012	1.5	033200	F4B-LT10-012	1.5
205	7/8	033261	F4B-LT7-014	2.2	033201	F4B-LT10-014	2.2
	15/16	033262	F4B-LT7-015	2.1	033202	F4B-LT10-015	2.1
	1	033263	F4B-LT7-100	2.0	033203	F4B-LT10-100	2.0
206	1-1/8	033264	F4B-LT7-102	2.9	033204	F4B-LT10-102	2.9
	1-3/16	033265	F4B-LT7-103	2.8	033205	F4B-LT10-103	2.8
207	1-1/4	033266	F4B-LT7-104	4.3	033206	F4B-LT10-104	4.3
	1-3/8	033267	F4B-LT7-106	4.0	033207	F4B-LT10-106	4.0
	1-7/16	033268	F4B-LT7-107	3.9	033208	F4B-LT10-107	3.9
	1-1/2	033269	F4B-LT7-108	3.8	033209	F4B-LT10-108	3.8
209	1-11/16	033270	F4B-LT7-111	5.8	033210	F4B-LT10-111	5.8
	1-3/4	033271	F4B-LT7-112	5.6	033211	F4B-LT10-112	5.6
210	1-15/16	033272	F4B-LT7-115	6.8	033212	F4B-LT10-115	6.8
	2	033273	F4B-LT7-200	6.6	033213	F4B-LT10-200	6.6
211	2-3/16	033274	F4B-LT7-203	8.5	033214	F4B-LT10-203	8.5
212	2-7/16	033275	F4B-LT7-207	11.0	033215	F4B-LT10-207	11.0
	2-1/2	033276	F4B-LT7-208	10.8	033216	F4B-LT10-208	10.8
215	2-15/16	033277	F4B-LT7-215	18.0	033217	F4B-LT10-215	18.0
	3	033278	F4B-LT7-300	17.7	033218	F4B-LT10-300	17.7

Series	Shaft Size	A	B	C	D	F Bolt Dia.	H	J	L
204	3/4	29/32	3-3/8	1-1/8	2-1/2	3/8	7/16	5/32	1-3/8
205	7/8	63/64	3-3/4	1-1/8	2-3/4	7/16	1/2	3/16	1-9/16
	15/16								
	1								
206	1-1/8	31/32	4-1/4	1-7/32	3-1/4	7/16	1/2	5/32	1-13/16
	1-3/16								
207	1-1/4	1-7/8	4-3/4	1-15/32	3-5/8	1/2	9/16	1/4	2-1/8
	1-3/8								
	1-7/16								
	1-1/2								
209	1-11/16	1-11/32	5-3/8	1-19/32	4-1/8	1/2	5/8	13/64	2-9/16
	1-3/4								
210	1-15/16	1-13/32	5-5/8	1-21/32	4-3/8	1/2	5/8	7/32	2-13/16
	2								
211	2-3/16	1-17/32	6-1/2	1-25/32	5-1/8	5/8	11/16	7/32	3-1/8
212	2-7/16	1-15/32	7	1-31/32	5-5/8	5/8	11/16	11/64	3-1/2
	2-1/2								
215	2-15/16	2-23/32	7-3/4	2-3/4	6	3/4	1	17/32	3-15/16
	3								

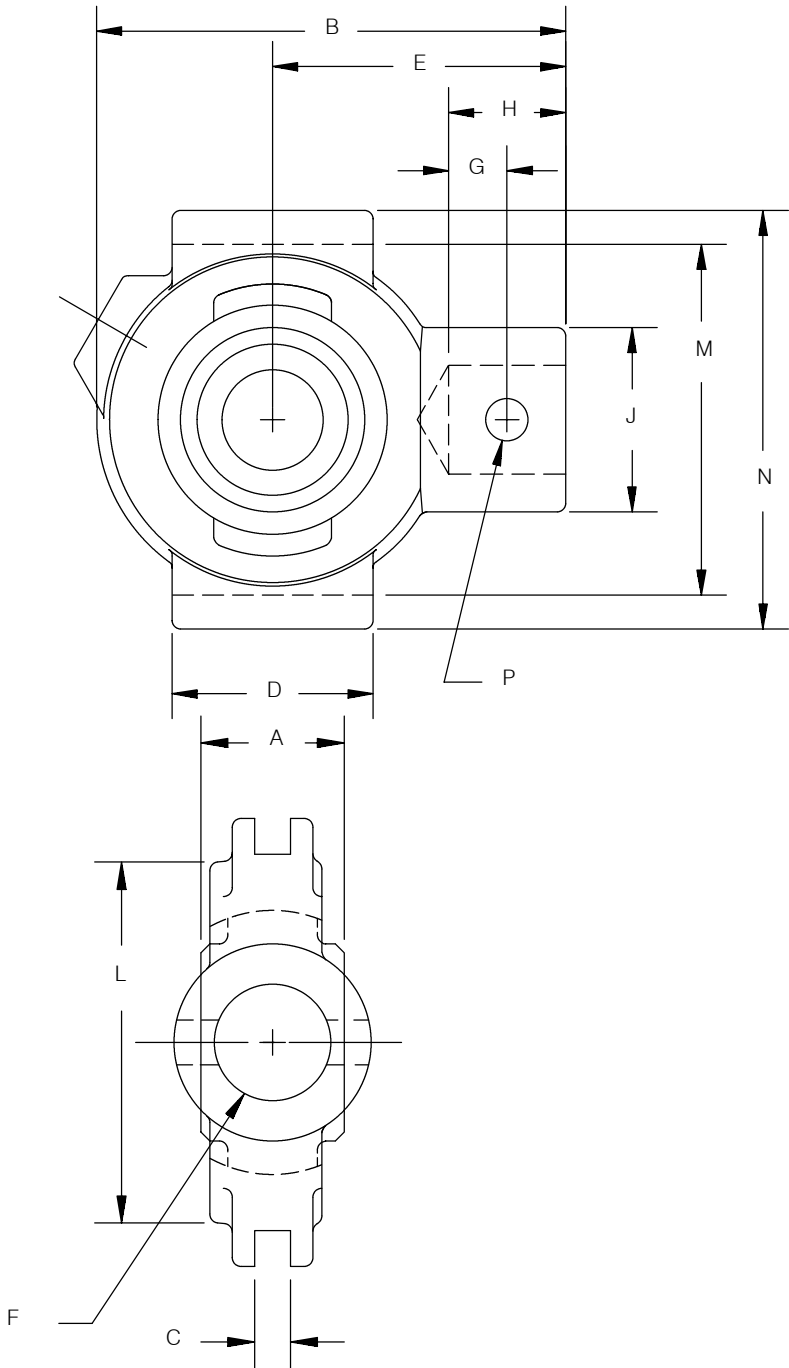
FEATURES/BENEFITS PAGE B11-2	HOW TO ORDER/ NOMENCLATURE PAGE B11-4	SELECTION PAGE B11-6	SELECTION/DIMENSIONS METRIC PAGE B11-55
---------------------------------	---	-------------------------	---



SELECTION/DIMENSIONS

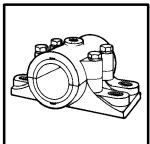
Sleeve Bearings–SOLIDLUBE–Inch

3/4" THRU 2-1/2" SOLIDLUBE LT NARROW SLOT TAKE-UP BEARINGS



FEATURES/BENEFITS PAGE B11-2	HOW TO ORDER/ NOMENCLATURE PAGE B11-4	SELECTION PAGE B11-6	SELECTION/DIMENSIONS METRIC PAGE B11-54
---------------------------------	---	-------------------------	---

SELECTION/DIMENSIONS



Sleeve Bearings–SOLIDLUBE–Inch

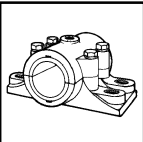
3/4" THRU 2-1/2" SOLIDLUBE LT NARROW SLOT TAKE-UP BEARINGS

Series	Shaft Size	LT700			LT1000			Used on Frame
		Part Number	Description	Wt.	Part Number	Description	Wt.	
204	3/4	033810	NSTU-LT7-012	1.7	033840	NSTU-LT10-012	1.7	NS-210
205	7/8	033811	NSTU-LT7-014	1.9	033841	NSTU-LT10-014	1.9	NS-210
	15/16	033812	NSTU-LT7-015	1.8	033842	NSTU-LT10-015	1.8	
	1	033813	NSTU-LT7-100	1.7	033843	NSTU-LT10-100	1.7	
206	1-1/8	033814	NSTU-LT7-102	2.8	033844	NSTU-LT10-102	2.8	NS-308
	1-3/16	033815	NSTU-LT7-103	2.7	033845	NSTU-LT10-103	2.7	
207	1-1/4	033816	NSTU-LT7-104	3.2	033846	NSTU-LT10-104	3.2	NS-308
	1-3/8	033817	NSTU-LT7-106	3.0	033847	NSTU-LT10-106	3.0	
	1-7/16	033818	NSTU-LT7-107	2.9	033848	NSTU-LT10-107	2.9	
	1-1/2	033819	NSTU-LT7-108	2.8	033849	NSTU-LT10-108	2.8	
209	1-11/16	033820	NSTU-LT7-111	4.9	033850	NSTU-LT10-111	4.9	NS-400
	1-3/4	033821	NSTU-LT7-112	4.8	033851	NSTU-LT10-112	4.8	
210	1-15/16	033822	NSTU-LT7-115	5.5	033852	NSTU-LT10-115	5.5	NS-400
	2	033823	NSTU-LT7-200	5.3	033853	NSTU-LT10-200	5.3	
211	2-3/16	033824	NSTU-LT7-203	6.7	033854	NSTU-LT10-203	6.7	NS-407
212	2-7/16	033825	NSTU-LT7-207	7.4	033855	NSTU-LT10-207	7.4	NS-415
	2-1/2	033826	NSTU-LT7-208	7.0	033856	NSTU-LT10-208	7.0	

Series	Shaft Size	A	B	C	D	E	F Screw Dia.	G
204	3/4	1	3-1/2	1/4	1-1/2	2-3/16	3/4	7/16
205	7/8, 15/16, 1	1-1/16	3-9/16	1/4	1-1/2	2-3/16	3/4	7/16
206	1-1/8, 1-3/16	1-3/16	4-5/16	1/4	2-1/2	2-11/16	3/4	7/16
207	1-1/4, 1-3/8 1-7/16, 1-1/2	1-5/16	4-1/2	1/4	2-1/2	2-11/16	3/4	7/16
209	1-11/16, 1-3/4	1-9/16	5-7/16	5/16	3	3-1/4	7/8	1/2
210	1-15/16, 2	1-5/8	5-1/2	5/16	3	3-1/4	7/8	1/2
211	2-3/16	1-3/4	6-1/8	5/16	3-1/2	3-5/8	1	19/32
212	2-7/16, 2-1/2	1-13/16	6-11/16	5/16	3-3/4	3-7/8	1	19/32

Series	Shaft Size	H	J	L	M	N	P Pin Dia.
204	3/4	7/8	1-3/8	1-3/8	2-5/8	3-1/8	5/16
205	7/8, 15/16, 1	7/8	1-3/8	1-9/16	2-5/8	3-1/8	5/16
206	1-1/8, 1-3/16	15/16	1-3/8	1-13/16	3-1/2	4-1/8	5/16
207	1-1/4, 1-3/8 1-7/16, 1-1/2	15/16	1-3/8	2-1/8	3-1/2	4-1/8	5/16
209	1-11/16, 1-3/4	1 7/32	1-5/8	2-9/16	4	4-3/4	3/8
210	1-15/16, 2	1-3/32	1-5/8	2-13/16	4	4-3/4	3/8
211	2-3/16	1-9/32	1-3/4	3-1/8	4-7/16	5-3/8	7/16
212	2-7/16, 2-1/2	1-9/32	1-5/8	3-1/2	4-15/16	5-3/4	7/16

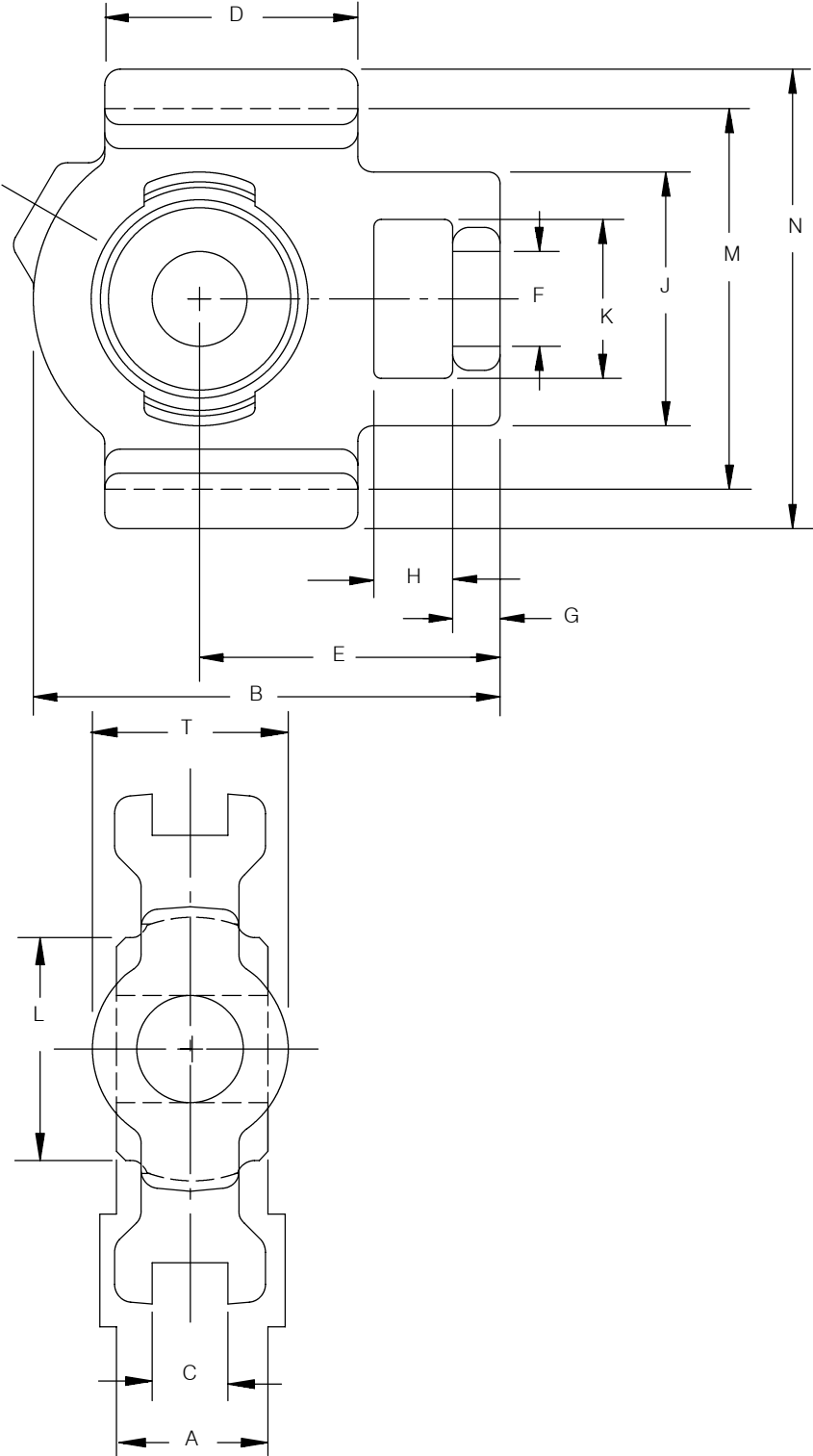
FEATURES/BENEFITS PAGE B11-2	HOW TO ORDER/ NOMENCLATURE PAGE B11-4	SELECTION PAGE B11-6	SELECTION/DIMENSIONS METRIC PAGE B11-57
---------------------------------	---	-------------------------	---



SELECTION/DIMENSIONS

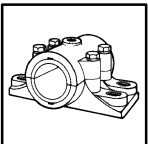
Sleeve Bearings-SOLIDLUBE-Inch

3/4" THRU 3" SOLIDLUBE LT WIDE SLOT TAKE-UP BEARINGS



FEATURES/BENEFITS PAGE B11-2	HOW TO ORDER/ NOMENCLATURE PAGE B11-4	SELECTION PAGE B11-6	SELECTION/DIMENSIONS METRIC PAGE B11-56
---------------------------------	---	-------------------------	---

SELECTION/DIMENSIONS



Sleeve Bearings–SOLIDLUBE–Inch

3/4" THRU 3" SOLIDLUBE LT WIDE SLOT TAKE-UP BEARINGS

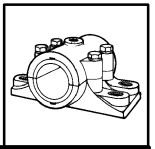
Series	Shaft Size	LT700			LT1000			Used on Frame
		Part Number	Description	Wt.	Part Number	Description	Wt.	
204	3/4	033870	WSTU-LT7-012	2.4	033910	WSTU-LT10-012	2.4	WS-300
205	7/8	033871	WSTU-LT7-014	2.6	033911	WSTU-LT10-014	2.6	WS-300
	15/16	033872	WSTU-LT7-015	2.5	033912	WSTU-LT10-015	2.5	
	1	033873	WSTU-LT7-100	2.4	033913	WSTU-LT10-100	2.4	
206	1-1/8	033874	WSTU-LT7-102	3.2	033914	WSTU-LT10-102	3.2	WS-308
	1-3/16	033875	WSTU-LT7-103	3.1	033915	WSTU-LT10-103	3.1	
207	1-1/4	033876	WSTU-LT7-104	4.2	033916	WSTU-LT10-104	4.2	WS-308
	1-3/8	033877	WSTU-LT7-106	3.9	033917	WSTU-LT10-106	3.9	
	1-7/16	033878	WSTU-LT7-107	3.8	033918	WSTU-LT10-107	3.8	
	1-1/2	033879	WSTU-LT7-108	3.7	033919	WSTU-LT10-108	3.7	
209	1-11/16	033880	WSTU-LT7-111	6.1	033920	WSTU-LT10-111	6.1	WS-400
	1-3/4	033881	WSTU-LT7-112	6.0	033921	WSTU-LT10-112	6.0	
210	1-15/16	033882	WSTU-LT7-115	6.7	033922	WSTU-LT10-115	6.7	WS-400
	2	033883	WSTU-LT7-200	6.5	033923	WSTU-LT10-200	6.5	
211	2-3/16	033884	WSTU-LT7-203	9.8	033924	WSTU-LT10-203	9.8	WS-502
212	2-7/16	033885	WSTU-LT7-207	10.1	033925	WSTU-LT10-207	10.1	WS-502
	2-1/2	033886	WSTU-LT7-208	9.8	033926	WSTU-LT10-208	9.8	
215	2-15/16	033887	WSTU-LT7-215	13.0	033927	WSTU-LT10-215	13.0	WS-515
	3	033888	WSTU-LT7-300	12.5	033928	WSTU-LT10-300	12.5	

Series	Shaft Size	A	B	C	D	E	F Dia.	G
204	3/4	1	3-11/16	17/32	2	2-3/8	3/4	3/8
205	7/8, 15/16, 1	1-1/16	3-13/16	17/32	2	2-7/16	13/16	3/8
206	1-1/8, 1-3/16	1-3/16	4-3/8	17/32	2-1/4	2-3/4	7/8	3/8
207	1-1/4, 1-3/8 1-7/16, 1-1/2	1-5/16	4-7/8	17/32	2-1/2	3-1/16	7/8	1/2
209	1-11/16, 1-3/4	1-9/16	5-5/8	11/16	3-1/4	3-7/16	1-1/8	5/8
210	1-15/16, 2	1-5/8	5-13/16	11/16	3-3/8	3-9/16	1-1/8	5/8
211	2-3/16	1-3/4	6-11/16	1-1/16	3-3/4	4-3/16	1-3/8	3/4
212	2-7/16, 2-1/2	1-13/16	7-1/2	1-1/16	4	4-11/16	1-3/8	3/4
215	2-15/16, 3	2-23/32	9-1/8	1-1/16	4-3/4	5-1/2	1-9/16	13/16

Series	Shaft Size	H	J	K	L	M	N	T
204	3/4	5/8	2	1-1/4	1-3/8	3	3-5/8	1-3/8
205	7/8, 15/16, 1	5/8	2	1-5/16	1-9/16	3	3-5/8	1-3/8
206	1-1/8, 1-3/16	5/8	2-3/16	1-7/16	1-13/16	3-1/2	4-1/8	1-5/8
207	1-1/4, 1-3/8 1-7/16, 1-1/2	5/8	2-1/2	1-7/16	2-1/8	3-1/2	4-1/8	1-5/8
209	1-11/16, 1-3/4	3/4	3-1/4	1-15/16	2-9/16	4	4-3/4	1-15/16
210	1-15/16, 2	3/4	3-1/4	1-15/16	2-13/16	4	4-3/4	1-15/16
211	2-3/16	1	4	2-1/2	3-1/8	5-1/8	5-7/8	2-1/2
212	2-7/16, 2-1/2	1-1/4	4	2-1/2	3-1/2	5-1/8	5-7/8	2-1/2
215	2-15/16, 3	1-1/4	4-3/8	2-3/4	3-15/16	5-15/16	6-11/16	2-3/4

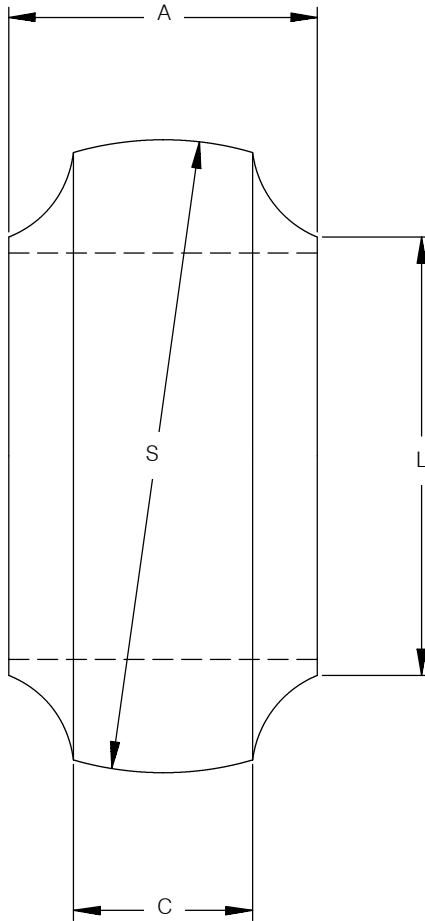
FEATURES/BENEFITS PAGE B11-2	HOW TO ORDER/ NOMENCLATURE PAGE B11-4	SELECTION PAGE B11-6	SELECTION/DIMENSIONS METRIC PAGE B11-57
---------------------------------	---	-------------------------	---

SELECTION/DIMENSIONS



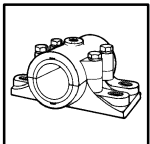
Sleeve Bearings-SOLIDLUBE-Inch

3/4" THRU 3" SOLIDLUBE LT INSERTS



FEATURES/BENEFITS PAGE B11-2	HOW TO ORDER/ NOMENCLATURE PAGE B11-4	SELECTION PAGE B11-6	SELECTION/DIMENSIONS METRIC PAGE B11-58
---------------------------------	---	-------------------------	---

SELECTION/DIMENSIONS



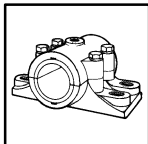
Sleeve Bearings–SOLIDLUBE–Inch

3/4" THRU 3" SOLIDLUBE LT INSERTS

Series	Shaft Size	700 Series			1000 Series		
		Part Number	LT700 Series Description	Wt.	Part Number	LT1000 Series Description	Wt.
204	3/4	033585	INS-LT7-012	0.3	033610	INS-LT10-012	.3
205	7/8	033586	INS-LT7-014	0.5	033611	INS-LT10-014	.5
	15/16	033587	INS-LT7-015	0.4	033612	INS-LT10-015	.4
	1	033588	INS-LT7-100	0.3	033613	INS-LT10-100	.3
206	1-1/8	033589	INS-LT7-102	0.7	033614	INS-LT10-102	.7
	1-3/16	033590	INS-LT7-103	0.6	033615	INS-LT10-103	.6
207	1-1/4	033591	INS-LT7-104	1.2	033616	INS-LT10-104	1.2
	1-3/8	033592	INS-LT7-106	1.0	033617	INS-LT10-106	1.0
	1-7/16	033593	INS-LT7-107	0.9	033618	INS-LT10-107	.9
	1-1/2	033594	INS-LT7-108	0.8	033619	INS-LT10-108	.8
209	1-11/16	033595	INS-LT7-111	1.6	033620	INS-LT10-111	1.6
	1-3/4	033596	INS-LT7-112	1.4	033621	INS-LT10-112	1.4
210	1-15/16	033597	INS-LT7-115	1.8	033622	INS-LT10-115	1.8
	2	033598	INS-LT7-200	1.6	033623	INS-LT10-200	1.6
211	2-3/16	033599	INS-LT7-203	2.3	033624	INS-LT10-203	2.3
212	2-7/16	033600	INS-LT7-207	3.2	033625	INS-LT10-207	3.2
	2-1/2	033601	INS-LT7-208	3.0	033626	INS-LT10-208	3.0
215	2-15/16	033602	INS-LT7-215	5.8	033627	INS-LT10-215	5.8
	3	034117	INS-LT7-300	5.5	034525	INS-LT10-300	5.5

Series	Shaft Size	A	C	L	S
204	3/4	1	5/8	1-3/8	1.8445/1.8425
205	7/8	1-1/16	5/8	1-9/16	2.0415/2.0395
	15/16				
	1				
206	1-1/8	1-3/16	11/16	1-13/16	2.435/2.433
	1-3/16				
207	1-1/4	1-5/16	13/16	2-1/8	2.829/2.827
	1-3/8				
	1-7/16				
	1-1/2				
209	1-11/16	1-9/16	13/16	2-9/16	3.3415/3.3395
	1-3/4				
210	1-15/16	1-5/8	7/8	2-13/16	3.5375/3.5355
	2				
211	2-3/16	1-3/4	15/16	3-1/8	3.932/3.930
212	2-7/16	1-13/16	1-1/16	3-1/2	4.326/4.324
	2-1/2				
215	2-15/16	2-23/32	1-3/16	3-15/16	5.1135/5.1115
	3				

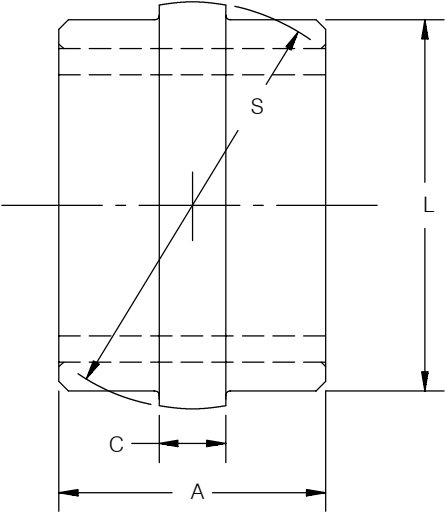
FEATURES/BENEFITS PAGE B11-2	HOW TO ORDER/ NOMENCLATURE PAGE B11-4	SELECTION PAGE B11-6	SELECTION/DIMENSIONS METRIC PAGE B11-58
---------------------------------	---	-------------------------	---



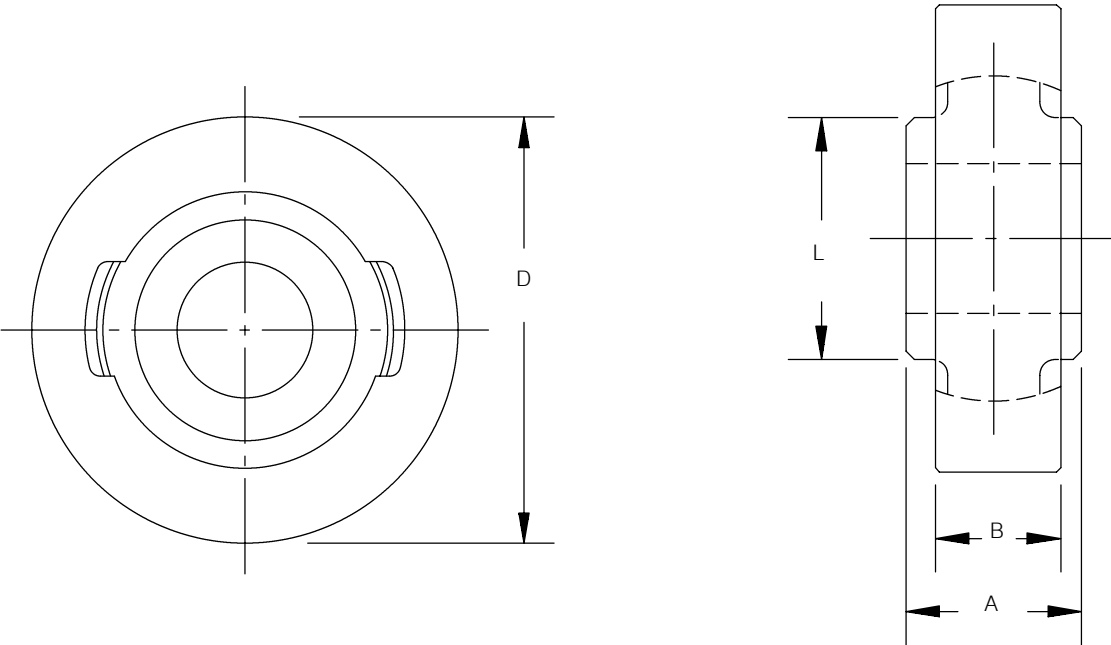
SELECTION/DIMENSIONS

Sleeve Bearings–SOLIDLUBE–Inch

3-7/16" THRU 5" SOLIDLUBE MM BEARING INSERTS

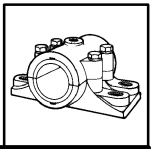


7/8" THRU 1-1/2" SOLIDLUBE LT CYLINDERICAL UNITS



FEATURES/BENEFITS PAGE B11-2	HOW TO ORDER/ NOMENCLATURE PAGE B11-4	SELECTION PAGE B11-6	
---------------------------------	---	-------------------------	--

SELECTION/DIMENSIONS



Sleeve Bearings–SOLIDLUBE–Inch

3-7/16" THRU 5" SOLIDLUBE MM BEARING INSERTS

Shaft Size	700 Series		1000 Series		Wt.
	Part No.	Description	Part No.	Description	
3-7/16	034438	INS-MM7-307	034439	INS-MM10-307	6.4
3-1/2	034440	INS-MM7-308	034441	INS-MM10-308	6.2
3-15/16	034442	INS-MM7-315	034443	INS-MM10-315	10.0
4	034444	INS-MM7-400	034445	INS-MM10-400	9.8
4-7/16	034446	INS-MM7-407	034447	INS-MM10-407	20.0
4-1/2	034448	INS-MM7-408	034449	INS-MM10-408	19.7
4-15/16	034450	INS-MM7-415	034451	INS-MM10-415	27.0
5	034452	INS-MM7-500	034453	INS-MM10-500	26.5

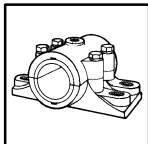
Shaft Size	Wt.	A	C	L Dia.	S Spherical Dia.
3-7/16	6.4	3-1/2	7/8	4-7/8	5.182/5.180
3-1/2	6.2				
3-15/16	10.0	4	1-1/8	5-5/8	6.057/6.055
4	9.8				
4-7/16	20.0	4-1/2	1-1/4	6-15/16	7.370/7.367
4-1/2	19.7				
4-15/16	27.0	5	1-3/8	7-9/16	7.995/7.992
5	26.5				

7/8" THRU 1-1/2" SOLIDLUBE LT CYLINDERICAL UNITS

Shaft Size	LT700			LT1000		
	Part Number	Description	Wt.	Part Number	Description	Wt.
7/8	033961	CYL-LT7-014	1.5	422596	CYL-LT10-014	1.5
15/16	033960	CYL-LT7-015		422595	CYL-LT10-015	
1	033962	CYL-LT7-100		422597	CYL-LT10-100	
1-1/8	033963	CYL-LT7-102	2.9	492598	CYL-LT10-102	2.9
1-3/16	033964	CYL-LT7-103		422599	CYL-LT10-103	
1-1/4	033965	CYL-LT7-104	3.0	422600	CYL-LT10-104	3.0
1-3/8	033966	CYL-LT7-106		422601	CYL-LT10-106	
1-7/16	033967	CYL-LT7-107		422602	CYL-LT10-107	
1-1/2	033968	CYL-LT7-108		422603	CYL-LT10-108	

Shaft Size	A	B	D Dia. +.000 -.002	L
7/8	1-1/16	27/32	3-1/8	1-9/16
15/16				
1				
1-1/8	1-3/16	15/16	3-1/2	1-13/16
1-3/16				
1-1/4	1-5/16	1-1/16	3-7/8	2-1/8
1-3/8				
1-7/16				
1-1/2				

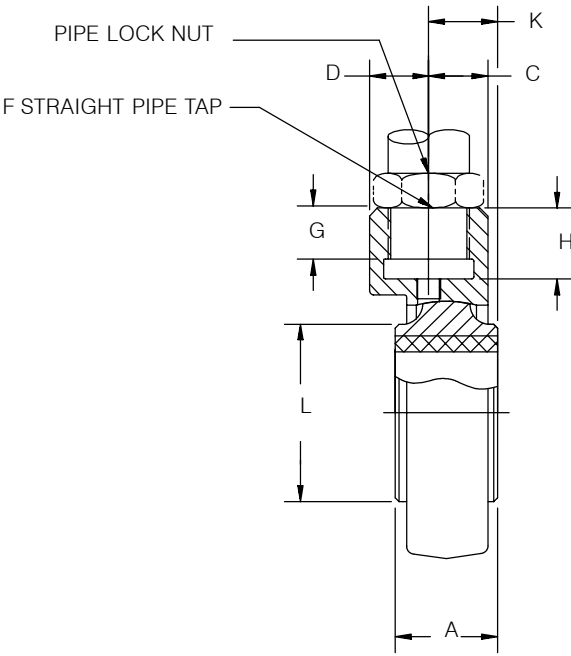
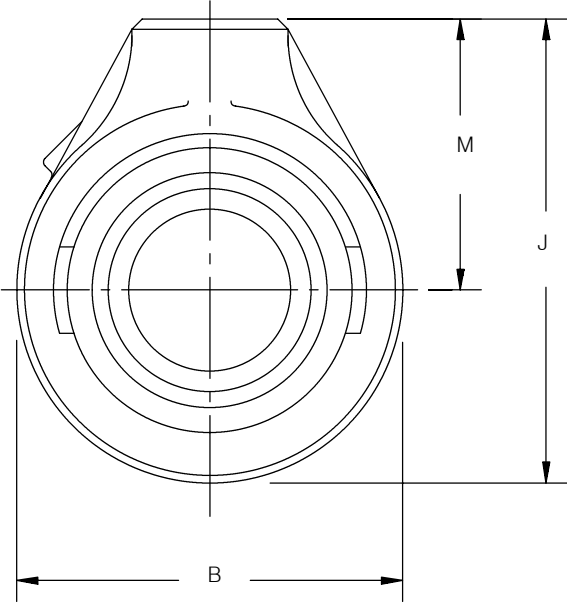
FEATURES/BENEFITS PAGE B11-2	HOW TO ORDER/ NOMENCLATURE PAGE B11-4	SELECTION PAGE B11-6	
---------------------------------	---	-------------------------	--



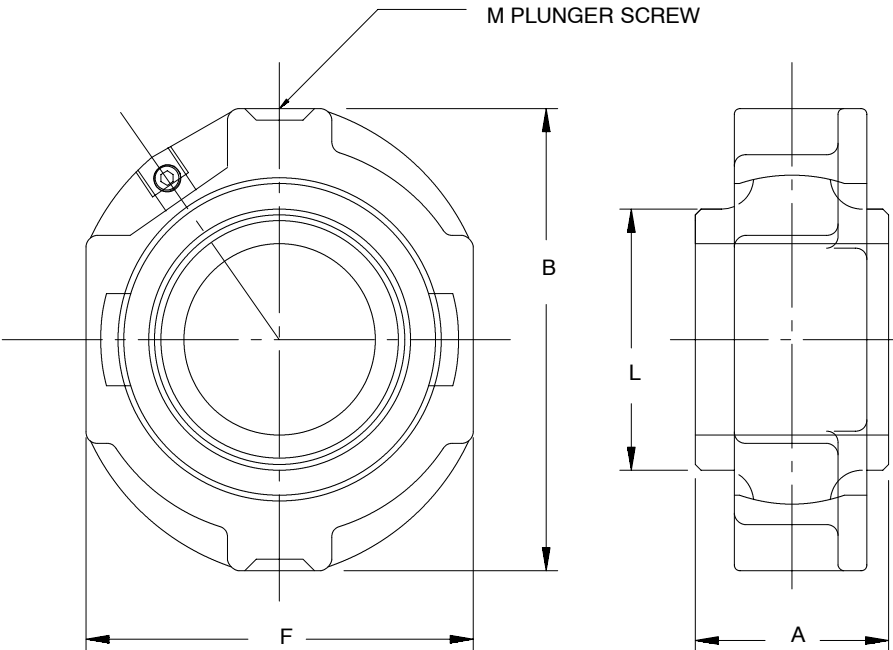
SELECTION/DIMENSIONS

Sleeve Bearings—SOLIDLUBE—Inch

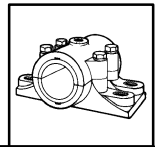
1-15/16" THRU 2-1/2"
SOLIDLUBE LT SCREW CONVEYOR HANGER BEARING



1-1/8" THRU 2"
SOLIDLUBE® LT HANGER BEARINGS



FEATURES/BENEFITS PAGE B11-2	HOW TO ORDER/ NOMENCLATURE PAGE B11-4	SELECTION PAGE B11-6	
---------------------------------	---	-------------------------	--



SELECTION/DIMENSIONS

Sleeve Bearings–SOLIDLUBE–Inch

1-15/16" THRU 2-1/2" SOLIDLUBE LT SCREW CONVEYOR HANGER BEARING

Series	Shaft Size	LT700 Series			LT1000 Series		
		Part Number	Description	Wt.	Part Number	Description	Wt.
210	1-15/16 2	033937	SCHB-LT7-115	5.8	033952	SCHB-LT10-115	1.9
		033938	SCHB-LT7-200	5.7	033953	SCHB-LT10-200	2.0
212	2-7/16 2-1/2	033939	SCHB-LT7-207	7.1	033954	SCHB-LT10-207	5.0
		033940	SCHB-LT7-208	7.0	033955	SCHB-LT10-208	4.8

Series	Shaft Size	A	B	C	D	F #	G	H	J	K	L	M
210	1-15/16 2	1-5/8	4-5/8	7/8	15/16	1	13/16	1-1/8	5-9/16	1-3/32	2-13/16	3-1/4
212	2-7/16 2-1/2	1-13/16	5-1/2	1-5/32	1-5/32	1-1/4	1-1/8	1-7/16	6-3/4	1-1/4	3-1/2	4

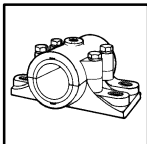
A straight thread is recommended for the pipe.

1-1/8" THRU 2" SOLIDLUBE LT HANGER BEARINGS

Shaft size	Part Numbers				Wt.
	LT700 Part No.	Description	LT1000 Part No.	Description	
1-1/8 1-3/16	033890	HNG-LT7-102	033900	HNG-LT10-102	1.9
	033891	HNG-LT7-103	033901	HNG-LT10-103	2.0
1-1/4 1-3/8 1-7/16 1-1/2	033892	HNG-LT7-104	033902	HNG-LT10-104	3.1
	033893	HNG-LT7-106	033903	HNG-LT10-106	3.0
	033894	HNG-LT7-107	033904	HNG-LT10-107	2.9
	033895	HNG-LT7-108	033905	HNG-LT10-108	2.8
1-15/16 2	033896	HNG-LT7-115	033906	HNG-LT10-115	5.0
	033897	HNG-LT7-200	033907	HNG-LT10-200	4.8

Shaft Size	A	B	F	L	M
1-1/8 1-3/16	1-3/16	3-5/8	3	1-13/16	1/2
1-1/4 1-3/8 1-7/16 1-1/2	1-5/16	4-1/4	3-1/2	2-1/8	1/2
1-15/16 2	1-5/8	5	4-3/16	2-13/16	5/8

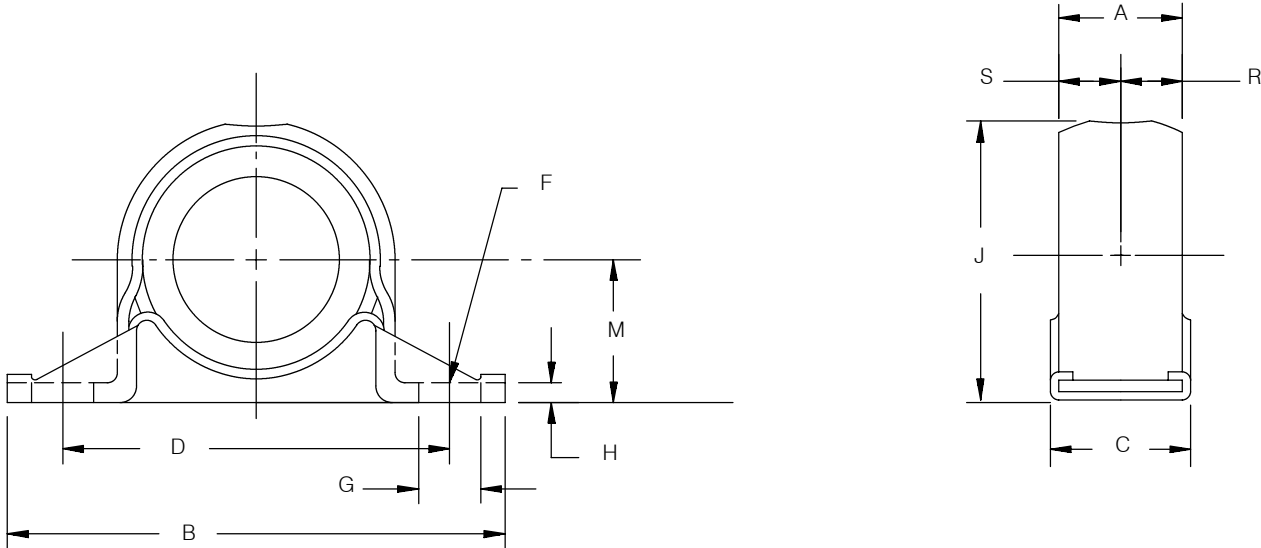
FEATURES/BENEFITS PAGE B11-2	HOW TO ORDER/ NOMENCLATURE PAGE B11-4	SELECTION PAGE B11-6	
---------------------------------	---	-------------------------	--



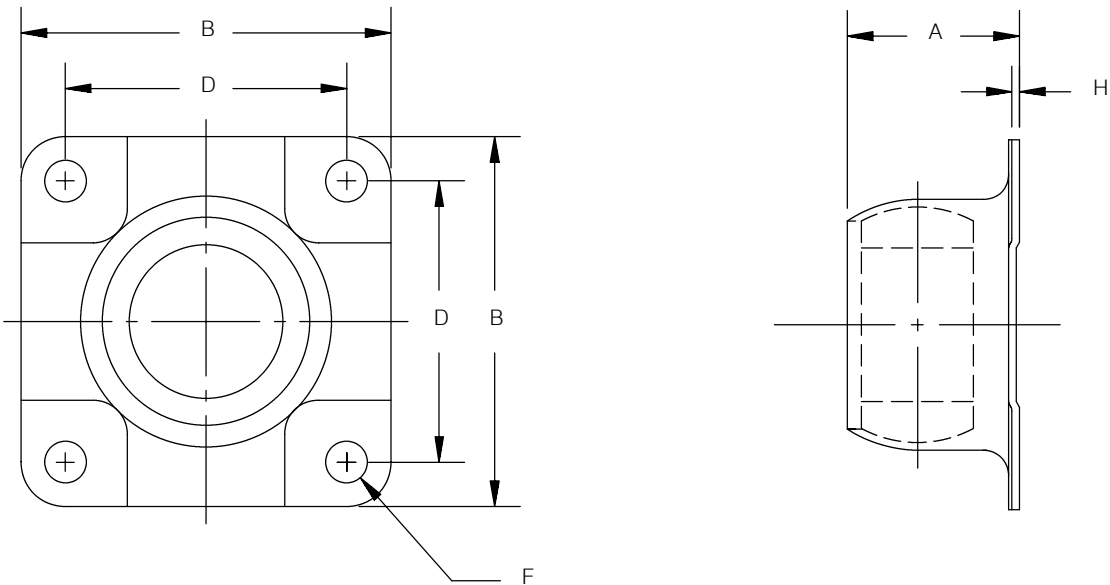
SELECTION/DIMENSIONS

Sleeve Bearings—SOLIDLUBE

3/4" THRU 1-1/2" SOLIDLUBE LM800 PILLOW BLOCKS

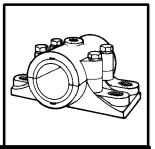


3/4" THRU 1-1/2" SOLIDLUBE LM800 FOUR BOLT FLANGE BEARING



FEATURES/BENEFITS PAGE B11-2	HOW TO ORDER/ NOMENCLATURE PAGE B11-4	SELECTION PAGE B11-6	
---------------------------------	---	-------------------------	--

SELECTION/DIMENSIONS



Sleeve Bearings—SOLIDLUBE

3/4" THRU 1-1/2" SOLIDLUBE LM800 PILLOW BLOCKS

Shaft Size	Part No.	Description	Wt.	A	B	C	D
3/4 1	033692	P2B-LM8-012	.70	1	4	1-7/32	3
	033693	P2B-LM8-100	.22				
1-1/4 1-1/2	033694	P2B-LM8-104	.70	1-1/8	4-1/2	1-11/32	3-1/2
	033695	P2B-LM8-108	.50				

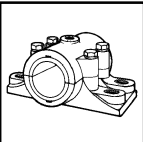
Shaft Size	F Bolt Dia.	G	H	J	M	R	S
3/4 1	3/8	9/16	5/32	2-1/16	1-1/16	1/2	1/2
1-1/4 1-1/2	3/8	9/16	5/32	2-9/16	1-5/16	9/16	9/16

3/4" THRU 1-1/2" SOLIDLUBE LM800 FOUR BOLT FLANGE BEARING

Shaft Size	Part No.	Description	Wt.	A	B
3/4 1	033696	F4B-LM8-012	.50	1-9/32	3-1/8
	033697	F4B-LM8-100	.36		
1-1/4 1-1/2	033698	F4B-LM8-104	.50	1-11/16	3-5/8
	033699	F4B-LM8-108	.50		

Shaft Size	D	F Bolt Dia.	H
3/4 1	2-1/4	3/8	1/16
1-1/4 1-1/2	2-3/4	3/8	1/16

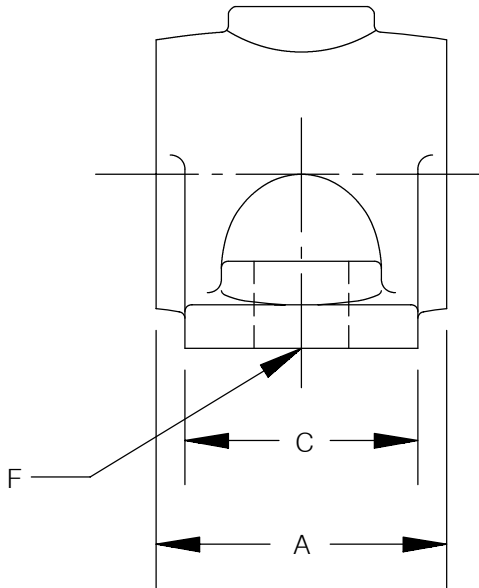
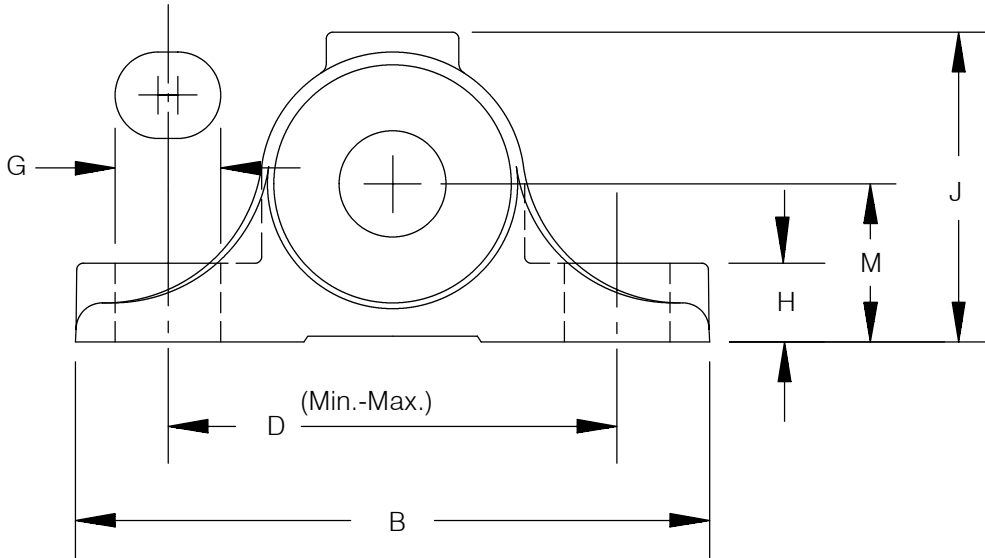
FEATURES/BENEFITS PAGE B11-2	HOW TO ORDER/ NOMENCLATURE PAGE B11-4	SELECTION PAGE B11-6	
---------------------------------	---	-------------------------	--



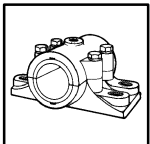
SELECTION/DIMENSIONS

Sleeve Bearings—Babbitted

1/2" THRU 3-7/16" SOLID BABBITTED JOURNAL BEARINGS



FEATURES/BENEFITS PAGE B11-2	HOW TO ORDER/ NOMENCLATURE PAGE B11-4	SELECTION PAGE B11-10	
---------------------------------	---	--------------------------	--



SELECTION/DIMENSIONS

Sleeve Bearings—Babbitted

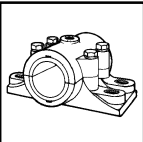
1/2" THRU 3-7/16" SOLID BABBITTED JOURNAL BEARINGS

Shaft Size	Part Number	Description	Wt.	Frame	A	B	C	D	
								Min.	Max.
1/2	006102	P2B-BASO-008	0.6	LD-10	1-1/4	3	1	2-1/32	2-7/32
5/8	006104	P2B-BASO-010	1.0	LD-10	1-1/2	3-1/2	1-1/8	2-13/32	2-19/32
3/4	006107	P2B-BASO-012	0.9						
7/8	006109	P2B-BASO-014	1.7	LD-10	1-7/8	4	1-1/2	2-7/8	3-1/8
15/16	006110	P2B-BASO-015	1.6						
1	006111	P2B-BASO-100	1.5						
1-1/8	006113	P2B-BASO-102	2.7	LD-10	2-3/8	4-3/4	1-3/4	3-3/8	3-5/8
1-3/16	006114	P2B-BASO-103	2.6						
1-1/4	006115	P2B-BASO-104	2.5						
1-5/16	006117	P2B-BASO-105	4.4	...	2-7/8	5-1/2	2	3-7/8	4-1/8
1-3/8	006118	P2B-BASO-106	4.2						
1-7/16	006119	P2B-BASO-107	4.0						
1-1/2	006120	P2B-BASO-108	3.8						
1-11/16	006124	P2B-BASO-111	6.0	LD-20	3-3/8	6-1/4	2-1/4	4-11/32	4-21/32
1-3/4	006125	P2B-BASO-112	5.8						
1-15/16	006128	P2B-BASO-115	8.2	...	3-7/8	7	2-1/2	5-1/8	5-3/8
2	006129	P2B-BASO-200	8.0						
2-3/16	006132	P2B-BASO-203	12	...	4-3/8	7-3/4	2-3/4	5-1/2	6
2-7/16	006136	P2B-BASO-207	15	...	4-7/8	8-1/2	3	6	6-1/2
2-11/16	006140	P2B-BASO-211	19	...	5-3/8	9-1/4	3-1/4	6-1/2	7
2-15/16	006144	P2B-BASO-215	25	LD-45	5-7/8	10	3-1/2	7-9/32	7-23/32
3-3/16	006148	P2B-BASO-303	33	...	6-7/8	10-3/4	4	7-5/8	8-3/8
3-7/16	006152	P2B-BASO-307	30						

Shaft Size	F Bolt	G	H	J	M	Grease Cups #		
						Pipe Tap	No. Reqd	Size
1/2	5/16	1/2	3/8	1-15/32	3/4	1/8	1	00
5/8	5/16	1/2	1/2	1-23/32	7/8	1/8	1	00
7/8	3/8	9/16	5/8	2	1	1/8	1	00
15/16								
1	7/16	21/32	11/16	2-7/16	1-1/4	1/8	1	00
1-1/8								
1-3/16								
1-1/4	1/2	11/16	7/8	2-3/4	1-3/8	1/4	1	0
1-5/16								
1-3/8								
1-7/16								
1-1/2	9/16	13/16	1	3-1/16	1-1/2	1/4	1	0
1-11/16								
1-3/4								
1-15/16								
2								
2-3/16	11/16	1-1/32	1-1/4	3-13/16	1-7/8	3/8	1	2
2-7/16	3/4	1-1/8	1-3/8	4-1/4	2-1/8	3/8	1	2
2-11/16	13/16	1-5/32	1-1/2	4-9/16	2-1/4	3/8	1	2
2-15/16	7/8	1-5/32	1-11/16	5	2-1/2	3/8	1	2
3-3/16	1	1-7/16	1-7/8	5-7/16	2-3/4	3/8	1	2
3-7/16								

Grease cups or pressure fittings may be obtained thru our distributors; one required per bearing.
 Note: All blocks have two base bolts and two cap bolts

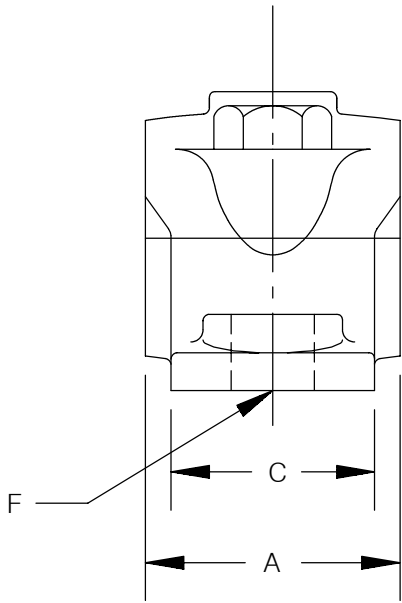
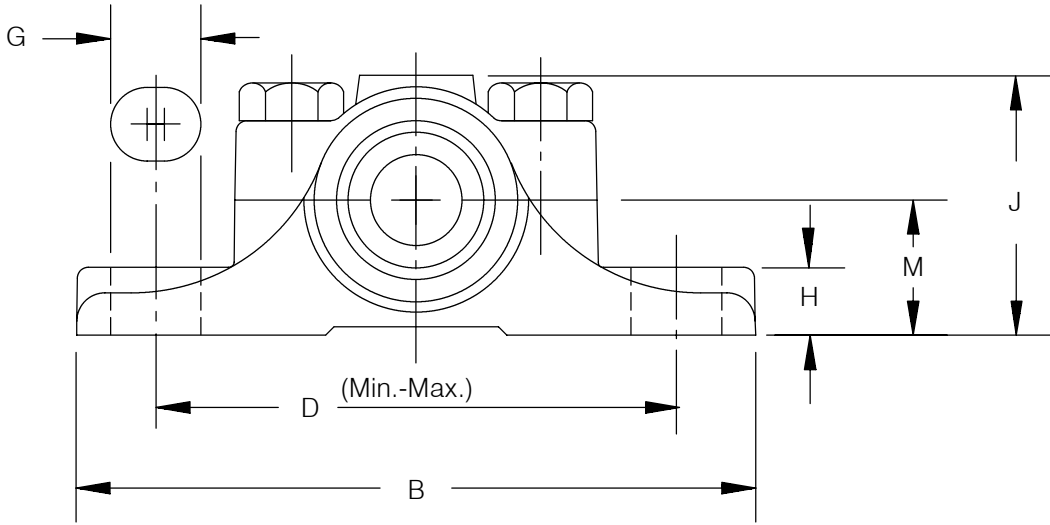
FEATURES/BENEFITS PAGE B11-2	HOW TO ORDER/ NOMENCLATURE PAGE B11-4	SELECTION PAGE B11-10	
---------------------------------	---	--------------------------	--



SELECTION/DIMENSIONS

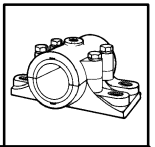
Sleeve Bearings—Babbitted

1/2" THRU 3-15/16" SPLIT BABBITTED JOURNAL BEARINGS



FEATURES/BENEFITS PAGE B11-2	HOW TO ORDER/ NOMENCLATURE PAGE B11-4	SELECTION PAGE B11-10	
---------------------------------	---	--------------------------	--

SELECTION/DIMENSIONS



Sleeve Bearings—Babbitted

1/2" THRU 3-15/16" SPLIT BABBITTED JOURNAL BEARINGS

Shaft Size	Part Number	Description	Wt.	A	B	C	D	
							Min.	Max.
1/2	006001	P2B-BASP-008	0.8	1-1/4	3-3/4	1	2-3/4	3
5/8 3/4	006004 006007	P2B-BASP-010 P2B-BASP-012	1.1 1.0	1-1/2	4-1/4	1-1/8	3-1/8	3-3/8
7/8 15/16 1	006010 006013 006016	P2B-BASP-014 P2B-BASP-015 P2B-BASP-100	1.9 1.8 1.7	2	4-3/4	1-1/2	3-1/2	3-3/4
1-1/16 1-1/8 1-3/16 1-1/4	006019 006022 006025 006028	P2B-BASP-101 P2B-BASP-102 P2B-BASP-103 P2B-BASP-104	3.3 3.2 3.1 3.0	2-1/2	5-1/4	1-3/4	4	4-1/4
1-5/16 1-3/8 1-7/16 1-1/2	006031 006034 006037 006040	P2B-BASP-105 P2B-BASP-106 P2B-BASP-107 P2B-BASP-108	5.0 4.8 4.6 4.4	3	6-1/4	2	4-13/16	4-15/16
1-5/8 1-11/16 1-3/4	006043 006046 006049	P2B-BASP-110 P2B-BASP-111 P2B-BASP-112	6.6 6.4 6.2	3-3/8	6-3/4	2-1/4	5-1/8	5-3/8
1-15/16 2	006052 006055	P2B-BASP-115 P2B-BASP-200	8.6 8.3	4	7-1/2	2-1/2	5-15/16	6-1/16
2-3/16 2-1/4	006058 006061	P2B-BASP-203 P2B-BASP-204	12.2 11.9	4-1/2	8-1/2	2-3/4	6-1/4	6-3/4
2-7/16 2-1/2	006064 006067	P2B-BASP-207 P2B-BASP-208	15.6 15.1	5	9-1/4	3	6-7/8	7-3/8
2-11/16	006070	P2B-BASP-211	20.0	5-3/8	10	3-5/16	7-1/2	8
2-15/16 3	006073 006076	P2B-BASP-215 P2B-BASP-300	24.2 23.7	6	10-3/4	3-1/2	8-1/4	8-3/4
3-7/16	006079	P2B-BASP-307	40	6-7/8	12	4	8-7/8	9-5/8
3-15/16	006082	P2B-BASP-315	53	7-7/8	13-1/2	4-1/2	10-3/32	10-29/32

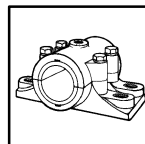
Shaft Size	F Bolt	G	H	J	M	Grease Cups #		
						Pipe Tap	No. Req'd	Size
1/2	5/16	1/2	23/64	1-15/32	3/4	1/8	1	00
5/8 3/4	5/16	1/2	1/2	1-23/32	7/8	1/8	1	00
7/8 15/16 1	3/8	9/16	9/16	2	1	1/8	1	00
1-1/16 1-1/8 1-3/16 1-1/4	7/16	5/8	5/8	2-7/16	1-1/4	1/8	1	00
1-5/16 1-3/8 1-7/16 1-1/2	9/16	11/16	3/4	2-3/4	1-3/8	1/4	1	0
1-5/8 1-11/16 1-3/4	9/16	25/32	13/16	3-1/16	1-1/2	1/4	1	0
1-15/16 2	11/16	13/16	15/16	3-1/2	1-3/4	1/4	1	0
2-3/16 2-1/4	11/16	1	1	3-13/16	1-7/8	3/8	1	2
2-7/16 2-1/2	11/16	1	1-1/8	4-1/4	2-1/8	3/8	1	2
2-11/16	13/16	1-1/8	1-3/16	4-9/16	2-1/4	3/8	1	2
2-15/16 3	13/16	1-1/8	1-5/16	5	2-1/2	3/8	1	2
3-7/16	15/16	1-3/8	1-1/2	5-3/4	2-7/8	1/2	1	3
3-15/16	1	1-1/2	1-5/8	6-7/16	3-1/8	1/2	1	3

Grease cups or pressure fittings may be obtained thru our distributors; one required per bearing.

Note: All blocks have 2 base bolts and 2 cap bolts.

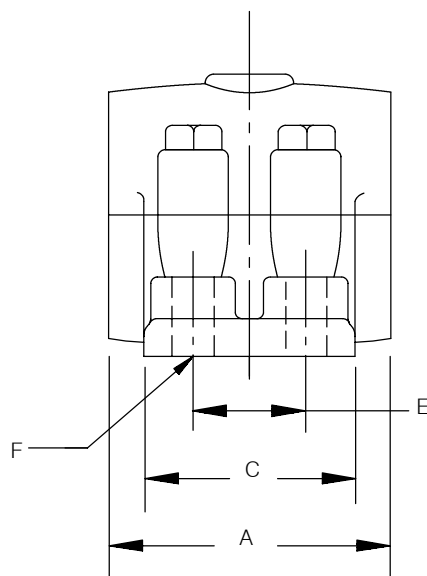
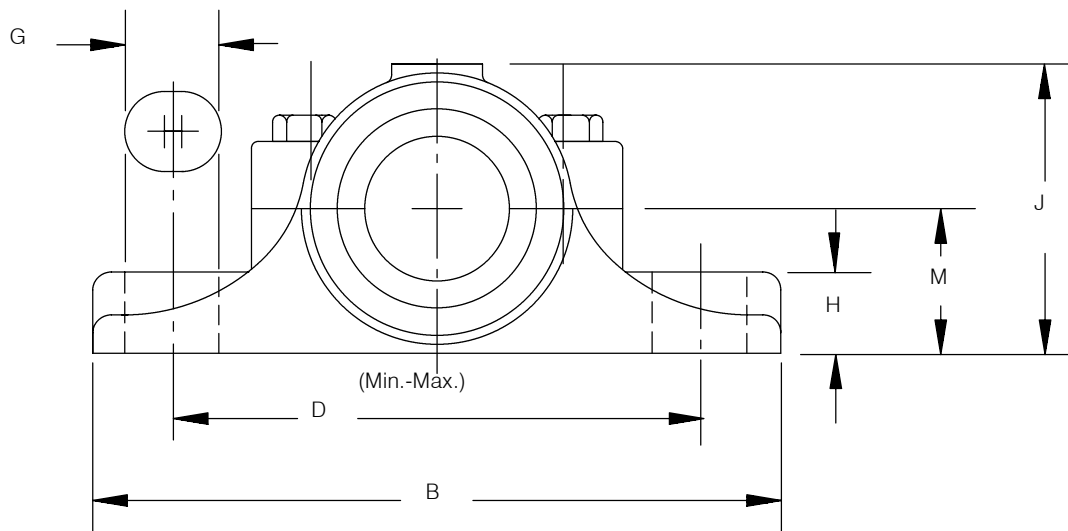
FEATURES/BENEFITS PAGE B11-2	HOW TO ORDER/ NOMENCLATURE PAGE B11-4	SELECTION PAGE B11-10	
---------------------------------	---	--------------------------	--

SELECTION/DIMENSIONS

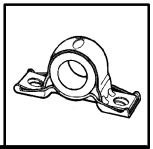


Sleeve Bearings—Babbitted

1-15/16" THRU 8" RIGID BABBITTED JOURNAL BEARINGS



FEATURES/BENEFITS PAGE B11-2	HOW TO ORDER/ NOMENCLATURE PAGE B11-4	SELECTION PAGE B11-10	
---------------------------------	---	--------------------------	--



SELECTION/DIMENSIONS

Sleeve Bearings—Babbitted

1-15/16" THRU 8" RIGID BABBITTED JOURNAL BEARINGS

Shaft Size	Part Number	Description	Wt.	A	B	C	D	
							Min.	Max.
1-15/16 2	004060	P4B-BAR-115	10.6	4	8-1/4	3-1/2	6-3/8	6-5/8
	004063	P4B-BAR-200	10.3					
2-3/16 2-1/4	004066	P4B-BAR-203	13.2	4-1/2	8-1/2	3-1/2	6-5/8	6-7/8
	004069	P4B-BAR-204	12.9					
2-7/16 2-1/2	004072	P4B-BAR-207	18.4	5	10-1/4	4	7-3/4	8-1/4
	004075	P4B-BAR-208	18.1					
2-11/16	004078	P4B-BAR-211	22.4	5-1/2	10-1/2	4-1/4	8	8-1/2
2-15/16 3	004081	P4B-BAR-215	30.6	6	11	4-1/2	8-1/2	9
	004084	P4B-BAR-300	30.1					
3-3/16 3-7/16 3-1/2	004087	P4B-BAR-303	50.2	7	13	5	10-1/8	10-7/8
	004090	P4B-BAR-307	46.5					
	004093	P4B-BAR-308	46.0					
3-15/16	004096	P4B-BAR-315	64.0	8	14-3/4	5-1/2	11-1/2	12-1/2
4-7/16	004099	P4B-BAR-407	88.0	9	16-1/2	6-1/4	13	14
4-15/16	004102	P4B-BAR-415	113.0	10	18	7	14-3/8	15-5/8
5-7/16	004105	P4B-BAR-507	147.0	11	19-1/4	7-3/4	15-1/8	16-3/8
5-15/16	004108	P4B-BAR-515	184.0	12	20-1/2	8-1/2	15-7/8	17-1/8
6-1/2 7	004113	P4B-BAR-608	255.0	13	22	9-1/2	17-3/8	18-5/8
	004114	P4B-BAR-700	310.0					
7-1/2	004115	P4B-BAR-708	370.0	15	24-1/2	10-1/2	19-3/8	20-5/8
8	004116	P4B-BAR-800	430.0	16	26	11	20-3/4	22-1/4

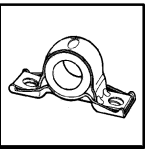
Shaft Size	E	F Bolt	G	H	J	M	Grease Cups #		
							Pipe Tap	No. Reqd	Size
1-15/16 2	1-3/4	1/2	3/4	7/8	3-1/2	1-3/4	1/4	1	1
2-3/16 2-1/4	1-3/4	1/2	3/4	1	3-13/16	1-7/8	3/8	1	2
2-7/16 2-1/2	2	5/8	1	1-1/8	4-1/4	2-1/8	3/8	1	2
2-11/16	2-1/4	5/8	1	1-1/4	4-9/16	2-1/4	3/8	1	2
2-15/16 3	2-1/2	5/8	1	1-3/8	5	2-1/2	3/8	1	2
3-3/16 3-7/16 3-1/2	2-3/4	3/4	1-1/4	1-1/2	5-29/32	3-1/4	1/2	1	3
3-15/16	3	3/4	1-3/8	1-5/8	6-17/32	3-1/2	1/2	1	4
4-7/16	3-1/2	7/8	1-1/2	1-3/4	7-17/32	4-1/8	1/2	1	4
4-15/16	4	7/8	1-5/8	1-7/8	8-7/32	4-1/2	1/2	1	4
5-7/16	4-1/2	1	1-3/4	2	9-1/32	5	1/2	2	3
5-15/16	5	1-1/8	1-7/8	2-1/8	9-7/8	5-1/2	1/2	2	3
6-1/2	5-1/2	1-1/8	1-7/8	2-1/4	10-23/32	6	1/2	2	4
7	6	1-1/4	2	2-3/8	11-1/2	6-1/2	1/2	2	4
7-1/2	6-1/4	1-3/8	2-1/8	2-1/2	12-5/32	6-3/4	1/2	2	4
8	6-3/4	1-3/8	2-1/4	2-1/2	12-3/4	7	1/2	2	4

Grease cups or pressure fittings may be obtained thru our distributors; one required per bearing up thru 4-15/16" sizes and two required for balance of sizes.

Note: 1-15/16 - 3" sizes have 2 cap bolts. 3-3/16 and larger sizes have 4 cap bolts (shown in diagram)

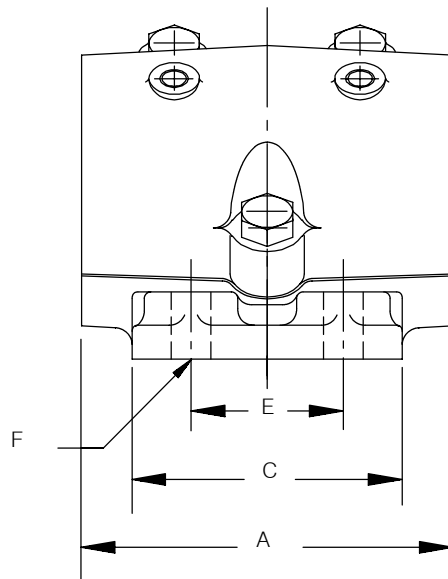
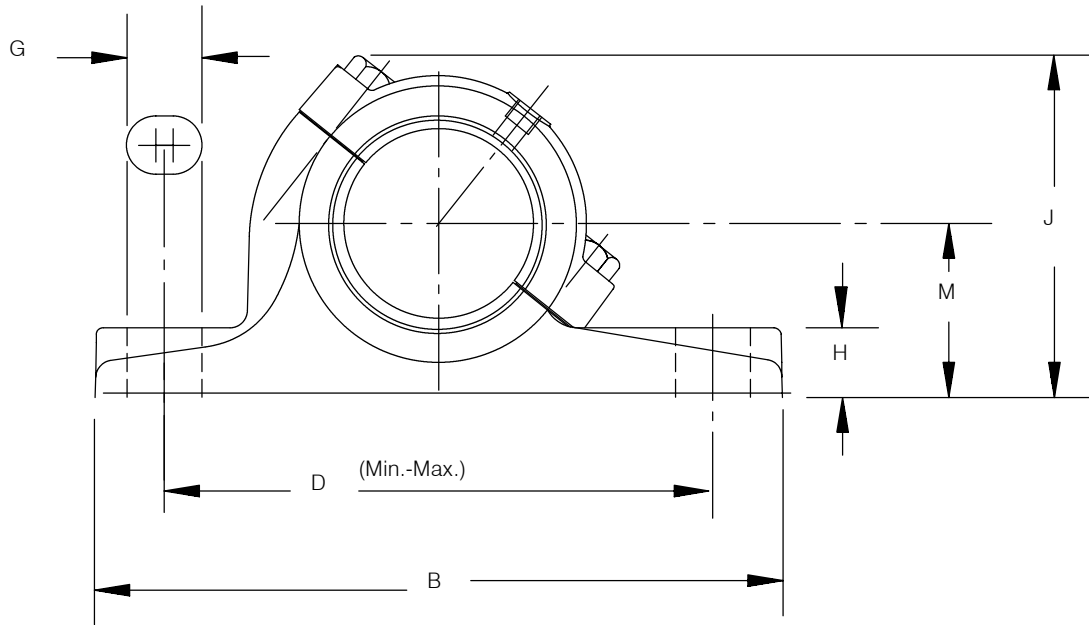
FEATURES/BENEFITS PAGE B11-2	HOW TO ORDER/ NOMENCLATURE PAGE B11-4	SELECTION PAGE B11-10	
---------------------------------	---	--------------------------	--

SELECTION/DIMENSIONS

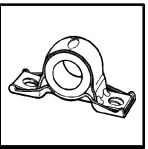


Sleeve Bearings—Babbitted

1-15/16" THRU 8" ANGLE BABBITTED PILLOW BLOCKS



FEATURES/BENEFITS PAGE B11-2	HOW TO ORDER/ NOMENCLATURE PAGE B11-4	SELECTION PAGE B11-10	
---------------------------------	---	--------------------------	--



SELECTION/DIMENSIONS

Sleeve Bearings—Babbitted

1-15/16" THRU 8" ANGLE BABBITTED PILLOW BLOCKS

Shaft Size	Part Number	Description	Wt.	Used on Frame	A	B	C	D	
								Min.	Max.
1-15/16	230050	P4B-BAA-115	11	HD-200	4	8-1/4	3-1/2	6-5/16	6-11/16
2-3/16	230053	P4B-BAA-203	14	HD-200	4-1/2	8-1/2	3-1/2	6-9/16	6-15/16
2-7/16	230056	P4B-BAA-207	20	HD-200	5	10-1/4	4	7-11/16	8-5/16
2-11/16	230059	P4B-BAA-211	24	HB-250	5-1/2	10-1/2	4-1/4	7-15/16	8-9/16
2-15/16	230062	P4B-BAA-215	28	HD-250	6	11	4-1/2	8-7/16	9-1/16
3-7/16	230065	P4B-BAA-307	47	HD-300	7	13	5	10-1/16	10-15/16
3-15/16	230068	P4B-BAA-315	61	HD-350	8	14-3/4	5-1/2	11-7/16	12-9/16
4-7/16	230071	P4B-BAA-407	84	HD-400	9	16-9/16	6-5/16	12-15/16	14-1/16
4-15/16	230074	P4B-BAA-415	112	HD-400	10	18	7	14-5/16	15-11/16
5-7/16	230077	P4B-BAA-507	154	HD-500	11	19-3/4	8	15-1/16	16-7/16
5-15/16	230080	P4B-BAA-515	184	HD-500	12	20-1/2	8-1/2	15-13/16	17-3/16
6-1/2	230134	P4B-BAA-608	220	...	13	22	9-5/8	17-3/16	18-13/16
7	230137	P4B-BAA-700	275	...	14	23	10	18-1/4	19-3/4
8	230140	P4B-BAA-800	400	...	16	26	11	20-11/16	22-5/16

Shaft Size	E	F Bolt	G	H	J	M	Grease Cups #		
							Pipe Tap	No. Reqd	Size
1-15/16	1-3/4	1/2	3/4	7/8	4-11/16	2-1/4	1/4	1	1
2-3/16	1-3/4	1/2	3/4	1	5-1/8	2-1/2	3/8	1	2
2-7/16	2	5/8	1	1-1/8	5-9/16	2-3/4	3/8	1	2
2-11/16	2-1/4	5/8	1	1-1/4	5-7/8	3	3/8	1	2
2-15/16	2-1/2	5/8	1	1-3/8	6-3/8	3-1/4	3/8	1	2
3-7/16	2-3/4	3/4	1-1/4	1-1/2	7-1/8	3-1/2	1/2	1	3
3-15/16	3	3/4	1-3/8	1-21/32	7-1/2	3-3/4	1/2	1	4
4-7/16	3-1/2	7/8	1-1/2	1-3/4	8-1/2	4-1/8	1/2	1	4
4-15/16	4	7/8	1-5/8	1-7/8	9-3/16	4-1/2	1/2	1	4
5-7/16	4-1/2	1-1/8	1-7/8	2	10-1/4	5	1/2	2	3
5-15/16	5	1-1/8	1-7/8	2-1/8	11-1/16	5-1/2	1/2	2	3
6-1/2	5-1/2	1-1/8	2	2-1/4	12-1/8	6	1/2	2	4
7	6	1-1/8	2	2-3/8	13	6-1/2	1/2	2	4
8	6-3/4	1-3/8	2-1/4	2-1/2	14-1/16	7	1/2	2	4

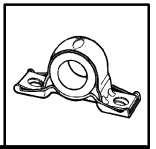
Grease cups or pressure fittings may be obtained thru our distributors; one required per bearing up thru 4-15/16" sizes and two required for balance of sizes.

Note: 1-15/16 - 3-7/16" sizes have 2 cap bolts.

3-3/16 - 5-15/16" have 3 cap bolts (shown in diagram).

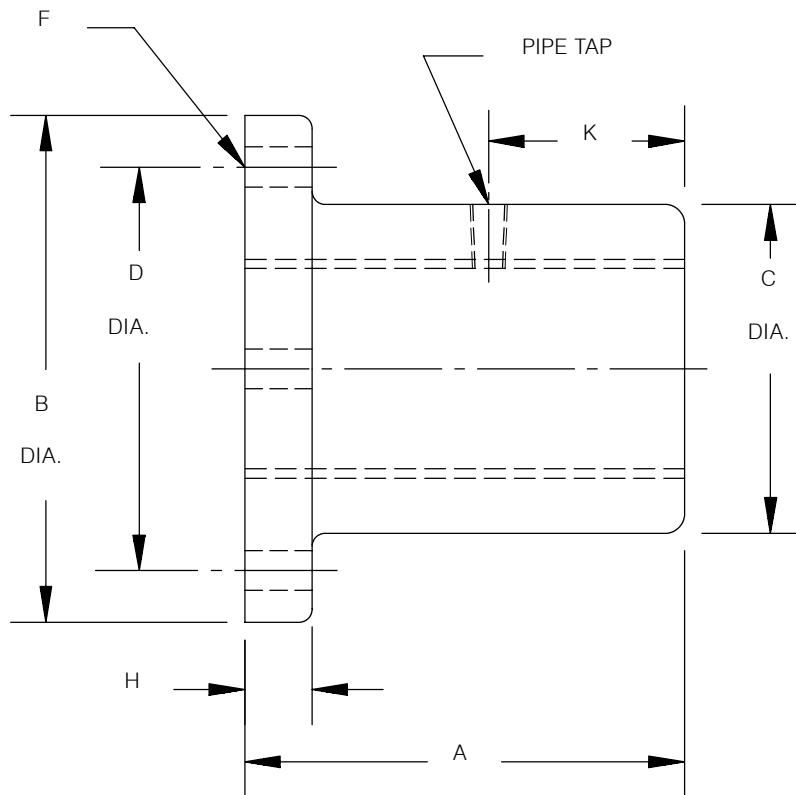
6-1/2" and larger sizes have 4 cap bolts.

FEATURES/BENEFITS PAGE B11-2	HOW TO ORDER/ NOMENCLATURE PAGE B11-4	SELECTION PAGE B11-10	
---------------------------------	---	--------------------------	--

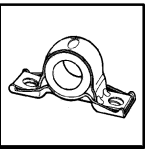


Sleeve Bearings—Babbitted

15/16" THRU 4-15/16" PLATE TYPE BABBITTED FLANGE BEARING



SELECTION/DIMENSIONS



Sleeve Bearings—Babbitted

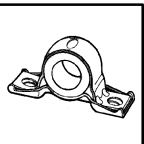
15/16" THRU 4-15/16" PLATE TYPE BABBITTED FLANGE BEARING

Shaft	Part Number	Description	Wt.	A	B Dia.	C Dia.	D Dia.
15/16 1	037001 037010	F4B-BAP-015 F4B-BAP-100	2.0 2.9	2	4	2	3
1-3/16 1-1/4	037002 037011	F4B-BAP-103 F4B-BAP-104	3.6 3.5	2-1/2	4-1/2	2-1/2	3-1/2
1-7/16 1-1/2	037003 037012	F4B-BAP-107 F4B-BAP-108	5.2 5.0	3	5-1/4	2-3/4	4
1-11/16	037004	F4B-BAP-111	8.6	3-1/2	6	3-1/4	4-3/4
1-15/16 2	037005 037013	F4B-BAP-115 F4B-BAP-200	12.0 11.7	4	6-1/2	3-3/4	5-1/4
2-3/16	037006	F4B-BAP-203	17	4-1/2	7-1/2	4	5-3/4
2-7/16	037007	F4B-BAP-207	22	5	8	4-1/2	6-1/4
2-11/16	037017	F4B-BAP-211	32	5-1/2	9	5	7
2-15/16	037009	F4B-BAP-215	35	6	9-1/2	5-1/4	7-1/2
3-7/16	037020	F4B-BAP-307	53	7	10-3/8	6-1/4	8-1/2
3-15/16	037022	F4B-BAP-315	70	8	11-1/8	6-7/8	9-1/4
4-7/16	037024	F4B-BAP-407	103	9	12-5/8	7-3/4	10-1/2
4-15/16	037026	F4B-BAP-415	140	10	14	8-1/2	11-1/2

Shaft	F Bolt		H	K	Grease Cups #	
	No.	Size			Pipe Tap	Size
15/16 1	4	3/8	3/8	3/4	1/8	00
1-3/16 1-1/4	4	3/8	7/16	1	1/8	00
1-7/16 1-1/2	4	1/2	1/2	1-1/4	1/4	0
1-11/16	4	1/2	5/8	1-1/2	1/4	0
1-15/16 2	4	1/2	11/16	1-5/8	1/4	1
2-3/16	4	5/8	3/4	1-7/8	3/8	2
2-7/16	4	5/8	7/8	2-1/8	3/8	2
2-11/16	4	3/4	1	1-3/4	3/8	2
2-15/16	4	3/4	1	2-1/4	3/8	2
3-7/16	6	3/4	1	2-3/4	1/2	3
3-15/16	6	3/4	1-1/8	3-1/4	1/2	4
4-7/16	6	7/8	1-1/4	3-3/4	1/2	4
4-15/16	6	1	1-3/8	4-1/4	1/2	4

Grease cups or pressure fittings may be obtained thru our distributors; one required per bearing.

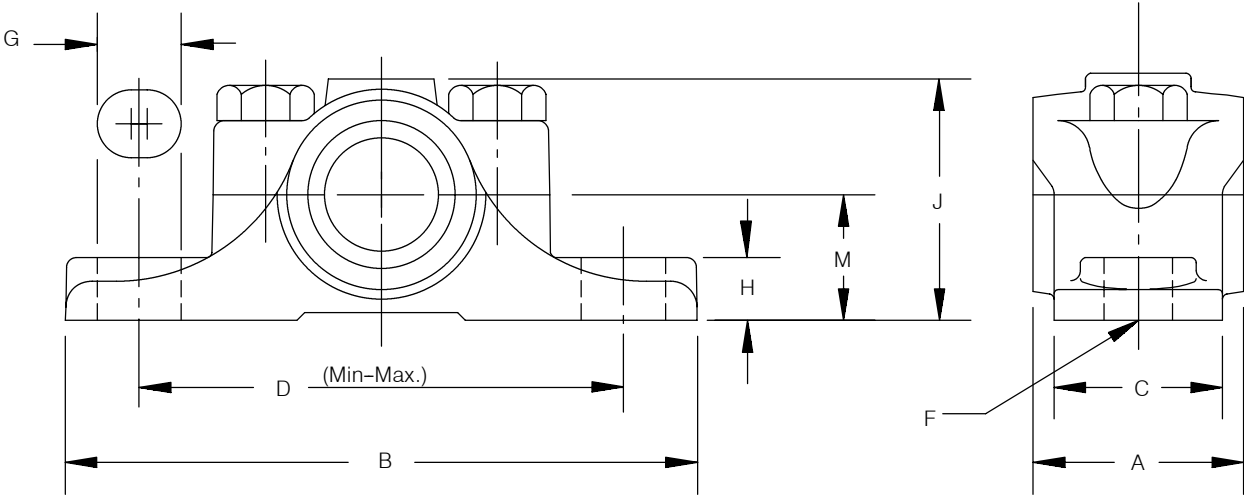
FEATURES/BENEFITS PAGE B11-2	HOW TO ORDER/ NOMENCLATURE PAGE B11-4	SELECTION PAGE B11-10	
---------------------------------	---	--------------------------	--



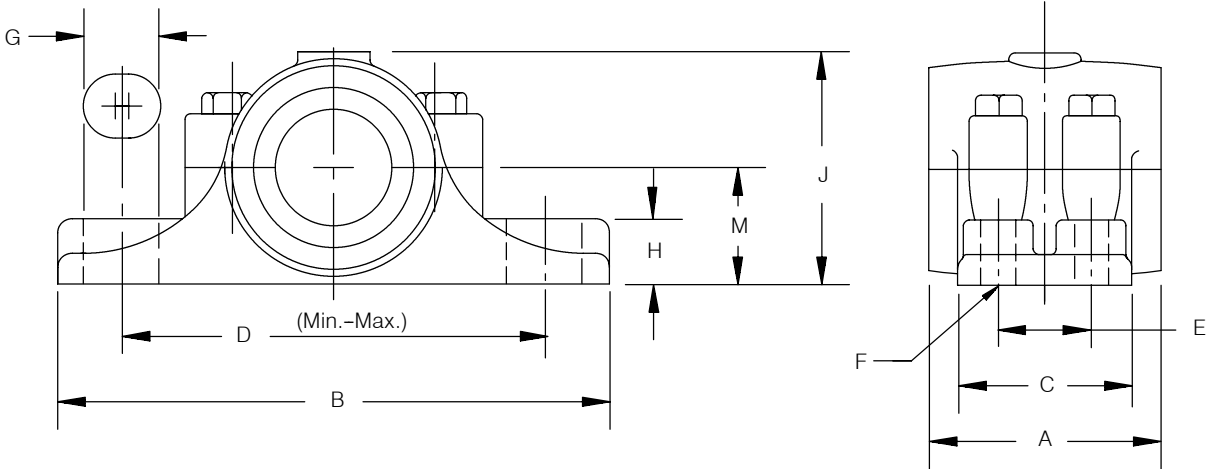
SELECTION/DIMENSIONS

Sleeve Bearings – Bronze-Bushed

1-15/16" THRU 2-15/16" SPLIT BRONZE JOURNAL BEARINGS

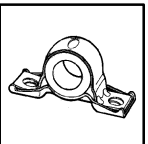


3-7/16" THRU 8" RIGID BRONZE JOURNAL BEARINGS



FEATURES/BENEFITS PAGE B11-2	HOW TO ORDER/ NOMENCLATURE PAGE B11-4	SELECTION PAGE B11-10	REPLACEMENT BRONZE BUSHINGS PAGE B11-12
---------------------------------	---	--------------------------	---

SELECTION/DIMENSIONS



Sleeve Bearings – Bronze–Bushed

1-15/16" THRU 2-15/16" SPLIT BRONZE JOURNAL BEARINGS

Shaft Size	Part Number	Description	Wt.	A	B	C	D	
							Min.	Max.
1-15/16	005070	P2B-BZSP-115	9	3-7/8	7-1/2	2-1/2	5-15/16	6-1/16
2-3/16	005073	P2B-BZSP-203	12	4-3/8	8-1/2	2-3/4	6-1/4	6-3/4
2-7/16	005076	P2B-BZSP-207	15	4-7/8	9-1/4	3	6-7/8	7-3/8
2-11/16	005079	P2B-BZSP-211	20	5-3/8	10	3-1/4	7-1/2	8
2-15/16	005082	P2B-BZSP-215	24	6	10-3/4	3-1/2	8-1/4	8-3/4

Shaft Size	F Bolt	G	H	J	M	Grease Cups #		
						Pipe Tap	No. Req'd	Size
1-15/16	5/8	13/16	15/16	3-1/2	1-3/4	1/4	1	0
2-3/16	5/8	1	1	3-7/8	1-7/8	3/8	1	2
2-7/16	5/8	1	1-1/8	4-1/4	2-1/8	3/8	1	2
2-11/16	3/4	1-1/8	1-3/16	4-9/16	2-1/4	3/8	1	2
2-15/16	3/4	1-1/8	1-5/16	5	2-1/2	3/8	1	2

Grease cups or pressure fittings may be obtained thru our distributors; one required per bearing.

Note: All sizes have 2 bold base and 2 cap bolts.

P3–7/16" THRU 8" RIGID BRONZE JOURNAL BEARINGS

Shaft Size	Part Number	Description	Wt.	A	B	C	D	
							Min.	Max.
3-7/16	005085	P4B-BZR-307	47	7	13	5	10-1/8	10-7/8
3-15/16	005088	P4B-BZR-315	64	8	14-3/4	5-1/2	11-1/2	12-1/2
4-7/16	005091	P4B-BZR-407	89	9	16-1/2	6-1/4	13	14
4-15/16	005094	P4B-BZR-415	115	10	18	7	14-3/8	15-5/8
5-7/16	005097	P4B-BZR-507	137	11	19-1/4	7-3/4	15-1/8	16-3/8
5-15/16	005100	P4B-BZR-515	180	12	20-1/2	8-1/2	15-7/8	17-1/8
6-1/2	005195	P4B-BZR-608	255	13	22	9-1/2	17-3/8	18-5/8
7	005198	P4B-BZR-700	310	14	23	10	18-3/8	19-5/8
7-1/2	005199	P4B-BZR-708	370	15	24-1/2	10-1/2	19-3/8	20-5/8
8	005201	P4B-BZR-800	430	16	26	11	20-3/4	22-1/4

Shaft Size	E	F Bolt	G	H	J	M	Grease Cups #		
							Pipe Tap	No. Req'd	Size
3-7/16	2-3/4	3/4	1-1/4	1-1/2	6-1/32	3-1/4	1/2	1	3
3-15/16	3	3/4	1-3/8	1-5/8	6-1/2	3-1/2	1/2	1	4
4-7/16	3-1/2	7/8	1-1/2	1-3/4	7-15/32	4-1/8	1/2	1	4
4-15/16	4	7/8	1-5/8	1-7/8	8-1/32	4-1/2	1/2	1	4
5-7/16	4-1/2	1	1-3/4	2	8-15/16	5	1/2	2	3
5-15/16	5	1-1/8	1-7/8	2-1/8	9-13/16	5-1/2	1/2	2	3
6-1/2	5-1/2	1-1/8	1-7/8	2-1/4	10-11/16	6	1/2	2	4
7	6	1-1/4	2	2-3/8	11-7/16	6-1/2	1/2	2	4
7-1/2	6-1/4	1-3/8	2-1/8	2-1/2	12-1/8	6-3/4	1/2	2	4
8	6-3/4	1-3/8	2-1/4	2-1/2	12-11/16	7	1/2	2	4

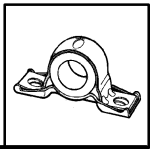
Grease cups or pressure fittings may be obtained thru our distributors; one required per pillow block up thru 4-15/16" sizes and two required for balance of sizes.

Note: All sizes have 4 base bolts.

3–7/16" and larger sizes have 4 cap bolts

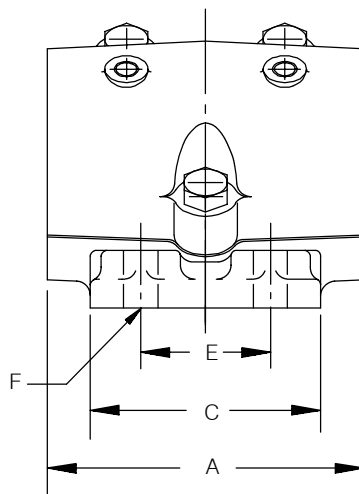
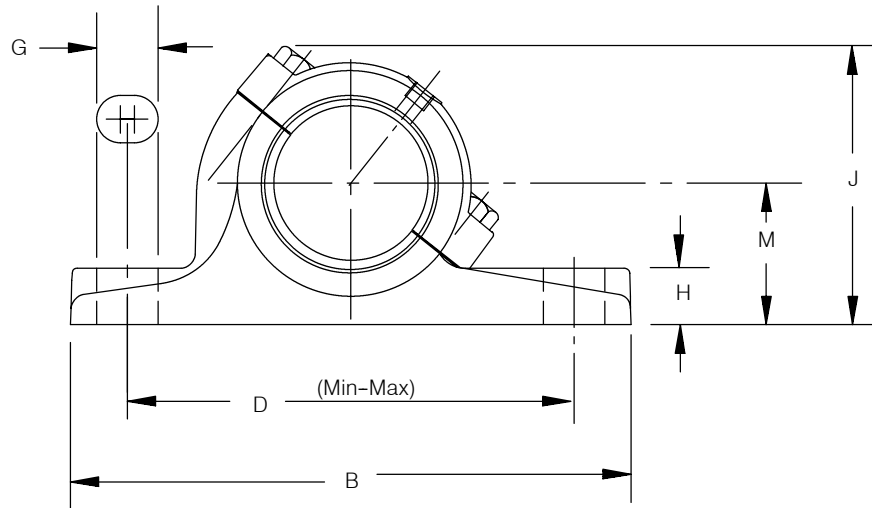
FEATURES/BENEFITS PAGE B11-2	HOW TO ORDER/ NOMENCLATURE PAGE B11-4	SELECTION PAGE B11-10	REPLACEMENT BRONZE BUSHINGS PAGE B11-12
---------------------------------	---	--------------------------	---

SELECTION/DIMENSIONS

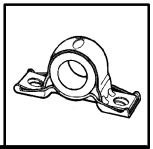


Sleeve Bearings – Bronze-Bushed

1-15/16" THRU 8" ANGLE BRONZE-BUSHED PILLOW BLOCKS



FEATURES/BENEFITS PAGE B11-2	HOW TO ORDER/ NOMENCLATURE PAGE B11-4	SELECTION PAGE B11-10	REPLACEMENT BRONZE BUSHINGS PAGE B11-12
---------------------------------	---	--------------------------	---



SELECTION/DIMENSIONS

Sleeve Bearings – Bronze–Bushed

1-15/16" THRU 8" ANGLE BRONZE–BUSHED PILLOW BLOCKS

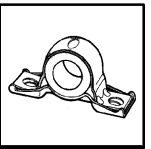
Shaft	Part Number	Description	Wt.	Used on Frame	A	B	C	D	
								Min.	Max.
1-15/16	231063	P4B-BZA-115	10	HD-200	4	8-1/4	3-1/2	6-5/16	6-11/16
2-3/16	231069	P4B-BZA-203	14	HD-200	4-1/2	8-1/2	3-1/2	6-9/16	6-15/16
2-7/16	231075	P4B-BZA-207	20	HD-200	5	10-1/4	4	7-11/16	8-5/16
2-11/16	231081	P4B-BZA-211	22	HD-250	5-1/2	10-1/2	4-1/4	7-15/16	8-9/16
2-15/16	231087	P4B-BZA-215	28	HD-250	6	11	4-1/2	8-7/16	9-1/16
3-7/16	231096	P4B-BZA-307	46	HD-300	7	13	5	10-1/16	10-15/16
3-15/16	231102	P4B-BZA-315	62	HD-350	8	14-3/4	5-1/2	11-7/16	12-9/16
4-7/16	231108	P4B-BZA-407	85	HD-400	9	16-9/16	6-5/16	12-15/16	14-1/16
4-15/16	231114	P4B-BZA-415	109	HD-400	10	18	7	14-5/16	15-11/16
5-7/16	231120	P4B-BZA-507	142	HD-500	11	19-3/4	8	15-1/16	16-7/16
5-15/16	231126	P4B-BZA-515	180	HD-500	12	20-1/2	8-1/2	15-13/16	17-3/16
6-1/2	231135	P4B-BZA-608	220	...	13	22	9-5/8	17-3/16	18-13/16
7	231141	P4B-BZA-700	275	...	14	23	10	18-1/4	19-3/4
8	231150	P4B-BZA-800	400	...	16	26	11	20-11/16	22-5/16

Shaft	E	F Bolt	G	H	J	M	Cap Bolts Quantity	Grease Cups #		
								Pipe Tap	Qty.	Size
1-15/16	1-3/4	1/2	3/4	7/8	4-11/16	2-1/4	2	1/4	1	1
2-3/16	1-3/4	1/2	3/4	1	5-1/8	2-1/2	2	3/8	1	2
2-7/16	2	5/8	1	1-1/8	5-9/16	2-3/4	2	3/8	1	2
2-11/16	2-1/4	5/8	1	1-1/4	5-7/8	3	2	3/8	1	2
2-15/16	2-1/2	5/8	1	1-3/8	6-3/8	3-1/4	2	3/8	1	2
3-7/16	2-3/4	3/4	1-1/4	1-1/2	7-1/8	3-1/2	2	1/2	1	3
3-15/16	3	3/4	1-3/8	1-5/8	7-1/2	3-3/4	3	1/2	1	4
4-7/16	3-1/2	7/8	1-1/2	1-3/4	8-1/2	4-1/8	3	1/2	1	4
4-15/16	4	7/8	1-5/8	1-7/8	9-3/16	4-1/2	3	1/2	1	4
5-7/16	4-1/2	1	1-7/8	2	10-1/4	5	3	1/2	2	3
5-15/16	5	1-1/8	1-7/8	2-3/16	11-1/16	5-1/2	3	1/2	2	3
6-1/2	5-1/2	1-1/8	2	2-1/4	12-1/8	6	4	1/2	2	4
7	6	1-1/4	2	2-3/8	13	6-1/2	4	1/2	2	4
8	6-3/4	1-3/8	2-1/4	2-1/2	14-1/16	7	4	1/2	2	4

Grease cups or pressure fittings may be obtained thru our distributors; one required per pillow block up thru 4-15/16" sizes and two required for balance of sizes.

Note: 1-15/16 – 3-7/16" sizes have 2 cap bolts
 3-15/16 – 5-15/16 sizes have 3 cap bolts (shown in diagram)
 6-1/2" and larger have 4 cap bolts

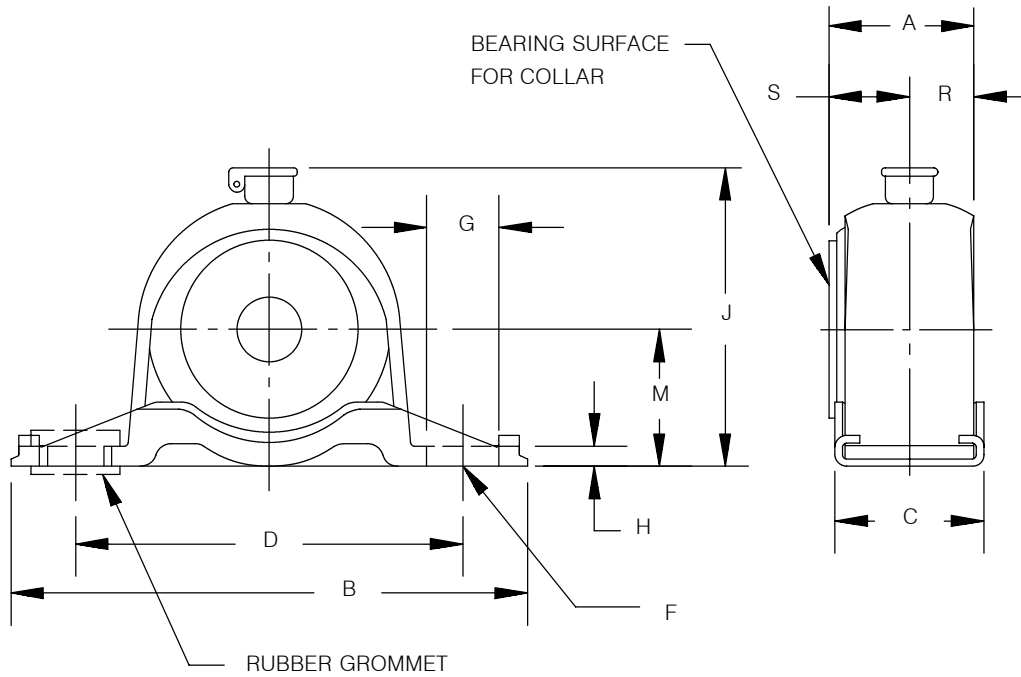
FEATURES/BENEFITS PAGE B11-2	HOW TO ORDER/ NOMENCLATURE PAGE B11-4	SELECTION PAGE B11-10	REPLACEMENT BRONZE BUSHINGS PAGE B11-12
---------------------------------	---	--------------------------	---



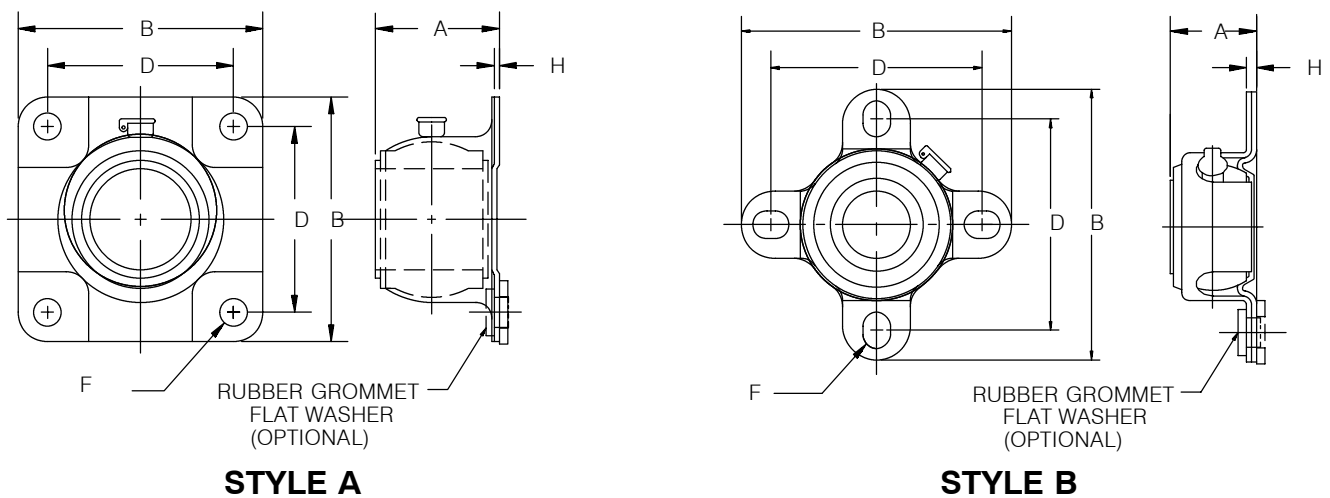
SELECTION/DIMENSIONS

Sleeve Bearings—BRONZOIL

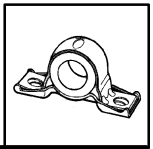
1/2" THRU 1-1/4" BRONZOIL PILLOW BLOCKS



1/2" THRU 1-1/4" BRONZOIL FOUR BOLT FLANGE BEARING



FEATURES/BENEFITS PAGE B11-2	HOW TO ORDER/ NOMENCLATURE PAGE B11-4	SELECTION PAGE B11-13	
---------------------------------	---	--------------------------	--



SELECTION/DIMENSIONS

Sleeve Bearings—BRONZOIL

1/2" THRU 1-1/4" BRONZOIL PILLOW BLOCKS

Shaft Size	Part No.	Description	Wt.	A	B	C	D
1/2 5/8 3/4	035025 035026 035027	P2B-BO-008 P2B-BO-010 P2B-BO-012	0.6	1-1/8	4	1-3/16	3
7/8 15/16 1	035028 035029 035030	P2B-BO-014 P2B-BO-015 P2B-BO-100	0.5	1-1/8	4	1-3/16	3
1-3/16	035107	P2B-BO-103	1.3	1-3/4	4-1/2	1-1/4	3-1/2
1-1/4	035108	P2B-BO-104	1.2	1-3/4	4-1/2	1-1/4	3-1/2

Shaft Size	F Bolt	G	H	J	M	R	S
1/2 5/8 3/4	3/8	9/16	5/32	2- 5/16	1-1/16	1/2	5/8
7/8 15/16 1	3/8	9/16	5/32	2-5/16	1-1/16	1/2	5/8
1-3/16	3/8	9/16	5/32	2-13/16	1-5/16	7/8	7/8
1-1/4	3/8	9/16	5/32	2-13/16	1-5/16	27/32	29/32

Grommets are optional and furnished on order only. Order (2) grommet long nipples (part number 035082) for each pillow block. When grommets are used, the J and M dimensions increase by 1/16" and the H dimension by 1/8". A 5/16" bolt and a washer must be used with each grommet. Washer part number 035084.

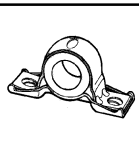
1/2" THRU 1-1/4" BRONZOIL FOUR BOLT FLANGE BEARING

Shaft Size	Part No.	Description	Wt.	A	B
1/2 5/8 3/4	035031 035032 035033	F4B-BO-008 F4B-BO-010 F4B-BO-012	.6	1-1/4	4
7/8 15/16 1	035034 035035 035036	F4B-BO-014 F4B-BO-013 F4B-BO-100	.5	1-1/4	4
1-3/16	035116	F4B-BO-103	1.3	1-7/8	3-5/8
1-1/4	035117	F4B-BO-104	1.2	1-29/32	3-5/8

Shaft Size	D	F Bolt	H	STYLE
1/2 3/8 3/4	3-1/8	3/8	5/32	B
7/8 15/16 1	3-1/8	3/8	5/32	B
1-3/16	2-3/4	3/8	1/16	A
1-1/4	2-3/4	3/8	1/16	A

Grommets are optional and furnished on order only. Order (4) grommet long short (part number 035083) for each flange bearing. When grommets are used, the A dimension increases by 1/16" and the H dimension by 1/8". A 5/16" bolt and a washer must be used with each grommet. Washer part number 035084.

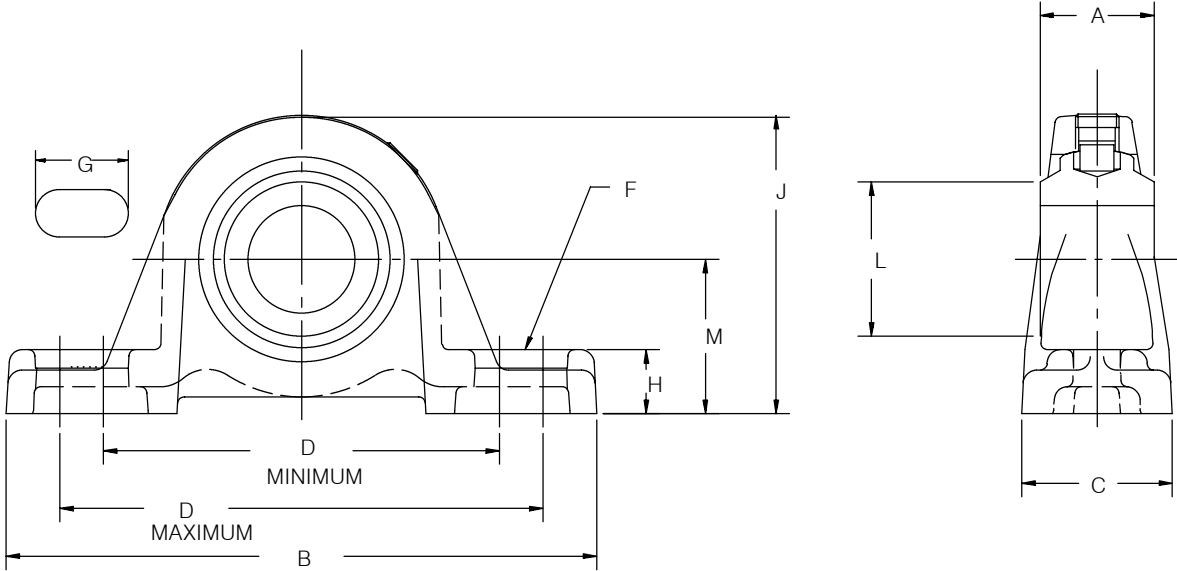
FEATURES/BENEFITS PAGE B11-2	HOW TO ORDER/ NOMENCLATURE PAGE B11-4	SELECTION PAGE B11-13	
---------------------------------	---	--------------------------	--



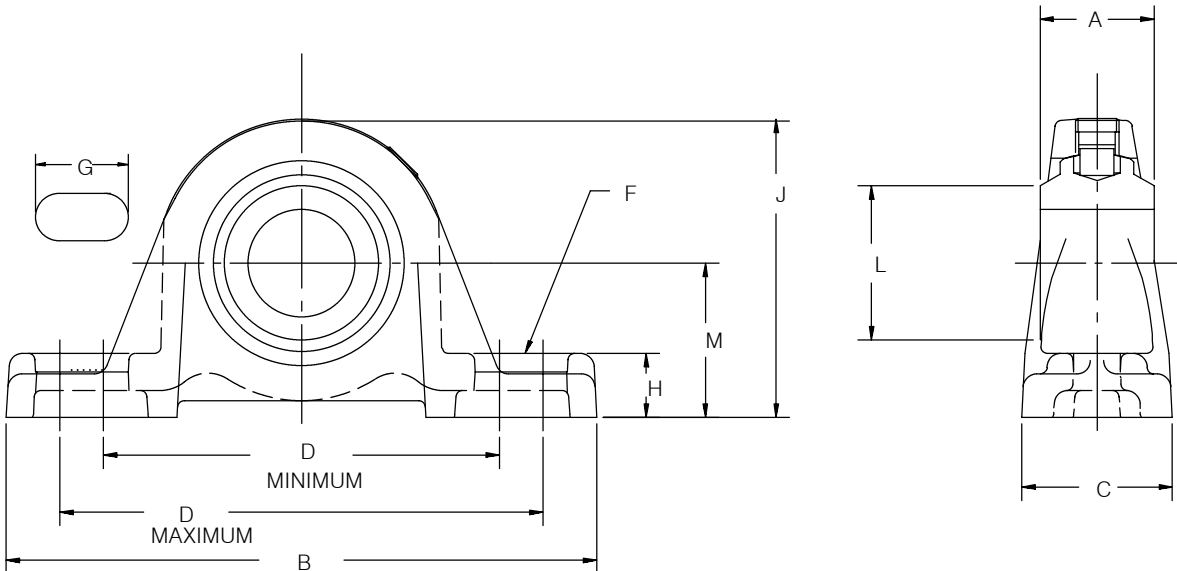
SELECTION/DIMENSIONS

Sleeve Bearings-SOLIDLUBE-Metric

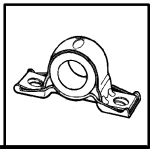
20MM THRU 75MM SOLIDLUBE LT PILLOW BLOCKS - METRIC



20MM THRU 75MM SOLIDLUBE LTB PILLOW BLOCKS - METRIC



FEATURES/BENEFITS PAGE B11-2	HOW TO ORDER/ NOMENCLATURE PAGE B11-4	SELECTION PAGE B11-8	SOLIDLUBE INCH PAGES B11-15 & B11-17
---------------------------------	---	-------------------------	---



SELECTION/DIMENSIONS

Sleeve Bearings–SOLIDLUBE–Metric

20MM THRU 75MM SOLIDLUBE LT PILLOW BLOCKS - METRIC

Series	Shaft Size	700 SERIES			1000 SERIES			Used on Frame
		Part Number	Description	Wt. (Kg)	Part Number	Description	Wt. (Kg)	
204	20mm	034225	P2B-LT7-20M	.77	034234	P2B-LT10-20M	.77	LD-10
205	25mm	034226	P2B-LT7-25M	.64	034235	P2B-LT10-25M	.64	LD-10
206	30mm	034227	P2B-LT7-30M	1.22	034236	P2B-LT10-30M	1.22	LD-20
207	35mm	034228	P2B-LT7-35M	1.77	034237	P2B-LT10-35M	1.77	LD-20
209	40mm	034229	P2B-LT7-40M	2.72	034238	P2B-LT10-40M	2.72	LD-20
	45mm	034230	P2B-LT7-45M	2.63	034239	P2B-LT10-45M	2.63	
210	50mm	034231	P2B-LT7-50M	3.08	034240	P2B-LT10-50M	3.08	LD-30
212	60mm	034221	P2B-LT7-60M	4.58	034241	P2B-LT10-60M	4.58	LD-40
215	70mm	034232	P2B-LT7-70M	9.98	034242	P2B-LT10-70M	9.98	LD-45
	75mm	034233	P2B-LT7-75M	9.62	034243	P2B-LT10-75M	9.62	

Series	Shaft Size	A	B	C	D		F		G	H	J	L	M
					Min.	Max.	mm	Inch					
204	20mm	25.4	133.4	34.1	85.7	106.4	10	3/8	21.4	13.5	65.1	34.9	33.3
205	25mm	27.0	139.7	35.7	93.7	114.3	10	3/8	21.4	15.1	70.6	39.7	36.5
206	30mm	30.2	158.8	44.5	108.0	127.0	12	1/2	23.8	17.5	82.6	46.0	41.3
207	35mm	33.3	165.1	44.5	119.1	138.1	12	1/2	23.8	18.3	95.3	54.0	47.6
209	40mm	39.7	188.9	50.8	139.7	157.2	12	1/2	23.0	19.1	108.7	65.1	54.0
	45mm												
210	50mm	41.3	206.4	57.1	152.4	170.0	16	5/8	26.2	19.1	115.1	71.4	57.2
212	60mm	46.0	241.3	60.3	174.6	201.6	16	5/8	31.0	22.2	137.3	88.9	69.9
215	70mm	69.1	298.5	73.0	215.9	241.3	22	7/8	36.5	25.4	171.5	100.0	88.9
	75mm												

All Dimensions Are in Millimeters Unless Otherwise Specified.

The LT and LTB Pillow Blocks are Identical Except the LTB Pillow Blocks Have Lower backing Dimensions.

20MM THRU 75MM SOLIDLUBE LTB PILLOW BLOCKS - METRIC

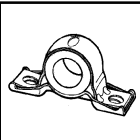
Series	Shaft Size	700 SERIES			1000 SERIES			Used on Frame
		Part Number	Description	Wt. (Kg)	Part Number	Description	Wt. (Kg)	
204	20mm	034244	P2B-LTB7-20M	.73	034252	P2B-LTB10-20M	.73	LD-10
205	25mm	034245	P2B-LTB7-25M	.59	034253	P2B-LTB10-25M	.59	LD-10
206	30mm	034246	P2B-LTB7-30M	1.18	034254	P2B-LTB10-30M	1.18	LD-20
207	35mm	034247	P2B-LTB7-35M	1.72	034255	P2B-LTB10-35M	1.72	LD-20
209	40mm	034248	P2B-LTB7-40M	2.27	034256	P2B-LTB10-40M	2.27	LD-20
	45mm	034249	P2B-LTB7-45M	2.18	034257	P2B-LTB10-45M	2.18	
210	50mm	034250	P2B-LTB7-50M	2.72	034258	P2B-LTB10-50M	2.72	LD-30
212	60mm	034251	P2B-LTB7-60M	3.67	034259	P2B-LTB10-60M	3.67	LD-40
215	70mm	LD-45
	75mm	

Shaft Size	A	B	C	D		F		G	H	J	L	M
				Min.	Max.	mm	Inch					
20mm	25.4	133.4	34.1	85.7	106.4	10	3/8	21.4	11.9	63.5	34.9	31.8
25mm	27.0	139.7	35.7	93.7	114.3	10	3/8	21.4	11.9	67.5	39.7	33.3
30mm	30.2	158.8	44.5	108.0	127.0	12	1/2	23.8	15.9	81.0	46.0	39.7
35mm	33.3	165.1	44.5	119.1	138.1	12	1/2	23.8	16.7	93.7	54.0	46.0
40mm	39.7	188.9	50.8	139.7	157.2	12	1/2	23.0	17.5	107.2	65.1	52.4
50mm	41.3	206.4	57.1	152.4	170.0	16	5/8	26.2	17.5	113.5	71.4	55.6
60mm	46.0	241.3	60.3	174.6	201.6	16	5/8	31.0	20.6	135.7	88.9	68.3
70mm	69.1	298.5	73.0	215.9	241.3	22	7/8	36.5	100.0

All Dimensions Are in Millimeters Unless Otherwise Specified.

The LT and LTB Pillow Blocks are Identical Except the LTB Pillow Blocks Have Lower backing Dimensions.

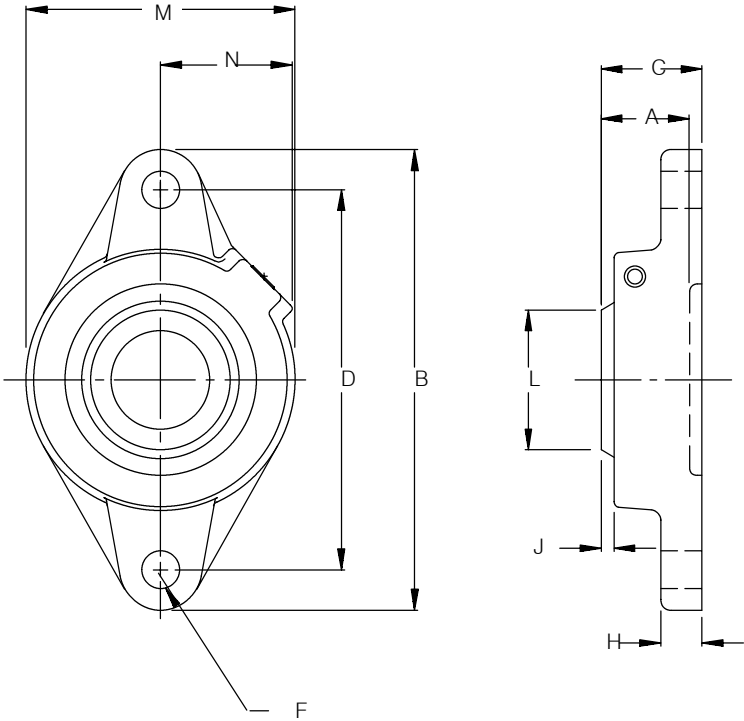
FEATURES/BENEFITS PAGE B11-2	HOW TO ORDER/ NOMENCLATURE PAGE B11-4	SELECTION PAGE B11-8	SOLIDLUBE INCH PAGES B11-15 & B11-17
---------------------------------	---	-------------------------	---



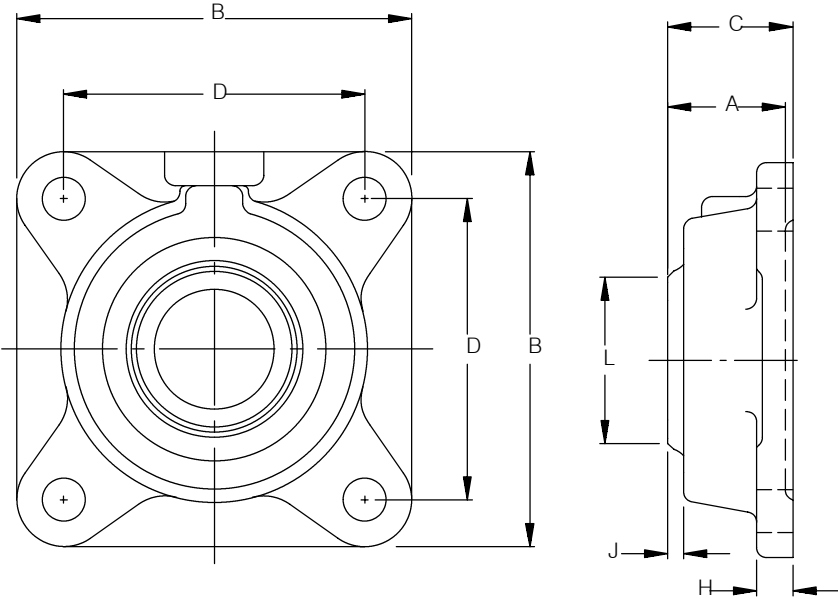
SELECTION/DIMENSIONS

Sleeve Bearings–SOLIDLUBE–Metric

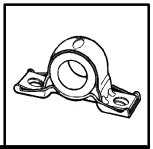
20MM THRU 50MM SOLIDLUBE LT 2-BOLT FLANGE BEARING-METRIC



20MM THRU 75MM SOLIDLUBE LT 4-BOLT FLANGE BEARING-METRIC



FEATURES/BENEFITS PAGE B11-2	HOW TO ORDER/NOMENCLATURE PAGE B11-4	SELECTION PAGE B11-8	SOLIDLUBE INCH PAGES B11-21 & B11-23
---------------------------------	---	-------------------------	---



SELECTION/DIMENSIONS

Sleeve Bearings–SOLIDLUBE–Metric

20MM THRU 50MM SOLIDLUBE LT 2-BOLT FLANGE BEARING-METRIC

Series	Shaft Size	700 Series			1000 Series		
		Part Number	Description	Wt. (Kg)	Part Number	Description	Wt. (Kg)
204	20mm	034260	F2B-LT7-20M	.54	034266	F2B-LT10-20M	.54
205	25mm	034261	F2B-LT7-25M	.68	034267	F2B-LT10-25M	.68
206	30mm	034262	F2B-LT7-30M	.95	034268	F2B-LT10-30M	.95
207	35mm	034263	F2B-LT7-35M	1.50	034269	F2B-LT10-35M	1.50
209	40mm	034218	F2B-LT7-40M	2.22	034270	F2B-LT10-40M	2.22
	45mm	034264	F2B-LT7-45M	2.13	034271	F2B-LT10-45M	2.13
210	50mm	034265	F2B-LT7-50M	2.36	034272	F2B-LT10-50M	2.36

Series	Shaft Size	A	B	C	D	F		H	J	L	M	N
						mm	Inch					
204	20mm	23.0	122.2	28.6	89.7	10.0	3/8	12.7	4.0	34.9	60.3	38.1
205	25mm	25.0	123.8	28.2	98.8	10.0	7/16	12.7	4.0	39.7	69.9	36.5
206	30mm	28.2	141.3	31.0	116.7	10.0	7/16	12.7	4.0	46.0	79.4	39.7
207	35mm	31.0	155.6	34.9	130.2	12.0	1/2	14.3	4.0	54.0	95.3	46.8
209	40mm	34.1	179.4	40.5	148.4	12.0	1/2	15.9	4.8	65.1	111.1	48.4
	45mm											
210	50mm	35.7	188.9	42.1	157.2	12.0	1/2	15.9	4.8	71.4	108.7	51.6

All Dimensions Are in Millimeters Unless Otherwise Specified.

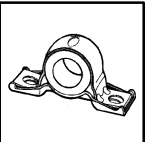
20MM THRU 75MM SOLIDLUBE LT 4-BOLT FLANGE BEARING-METRIC

Series	Shaft Size	700 Series			1000 Series		
		Part Number	Description	Wt. (Kg)	Part Number	Description	Wt. (Kg)
204	20mm	034273	F4B-LT7-20M	.68	034283	F4B-LT10-20M	.60
205	25mm	034274	F4B-LT7-25M	.91	034284	F4B-LT10-25M	.91
206	30mm	034275	F4B-LT7-30M	1.27	034285	F4B-LT10-30M	1.27
207	35mm	034276	F4B-LT7-35M	1.81	034286	F4B-LT10-35M	1.81
209	40mm	034277	F4B-LT7-40M	2.63	034287	F4B-LT10-40M	2.63
	45mm	034278	F4B-LT7-45M	2.54	034288	F4B-LT10-45M	2.54
210	50mm	034279	F4B-LT7-50M	3.00	034289	F4B-LT10-50M	3.00
212	60mm	034280	F4B-LT7-60M	5.00	034290	F4B-LT10-60M	5.00
215	70mm	034281	F4B-LT7-70M	8.16	034291	F4B-LT10-70M	8.16
	75mm	034282	F4B-LT7-75M	8.03	034292	F4B-LT10-75M	8.03

Series	Shaft Size	A	B	C	D	F Bolt Dia.		H	J	L
						mm	Inch			
204	20mm	23.0	85.7	28.6	63.5	10	3/8	11.1	4.0	34.9
205	25mm	25.0	95.2	28.2	69.9	10	7/16	12.7	4.8	39.7
206	30mm	24.6	108.0	31.0	82.6	10	7/16	12.7	4.0	46.0
207	35mm	31.0	120.7	34.9	92.1	12	1/2	14.3	4.0	54.0
209	40mm	34.1	136.5	40.5	104.8	12	1/2	15.9	5.2	65.1
	45mm									
210	50mm	35.7	142.9	42.1	111.1	12	1/2	15.9	5.6	71.4
212	60mm	37.3	177.8	50.0	142.9	16	5/8	17.5	4.4	88.9
215	70mm	69.1	196.9	69.9	152.4	18	3/4	25.4	13.5	100.0
	75mm									

All Dimensions Are in Millimeters Unless Otherwise Specified.

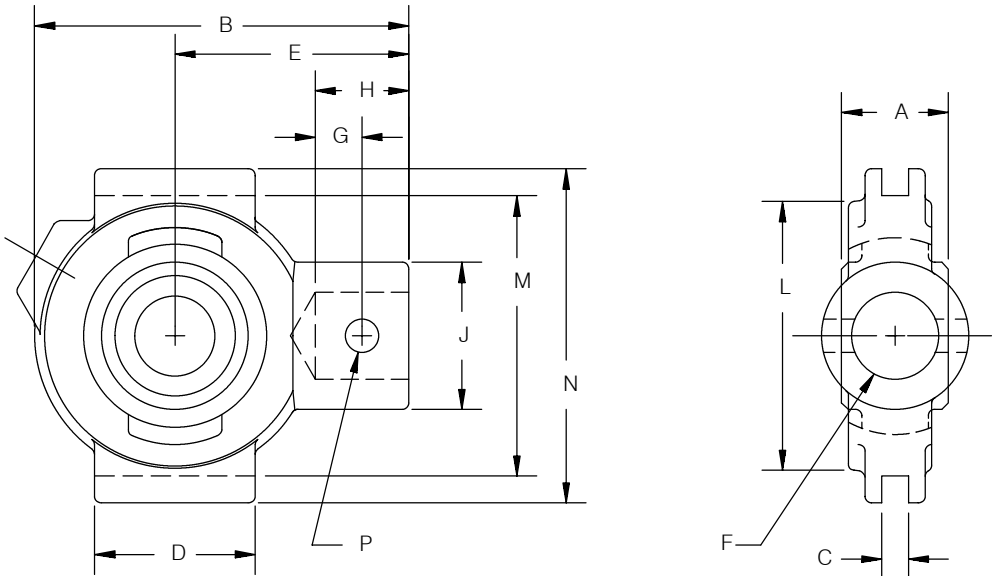
FEATURES/BENEFITS PAGE B11-2	HOW TO ORDER/ NOMENCLATURE PAGE B11-4	SELECTION PAGE B11-8	SOLIDLUBE INCH PAGES B11-21 & B11-23
---------------------------------	---	-------------------------	---



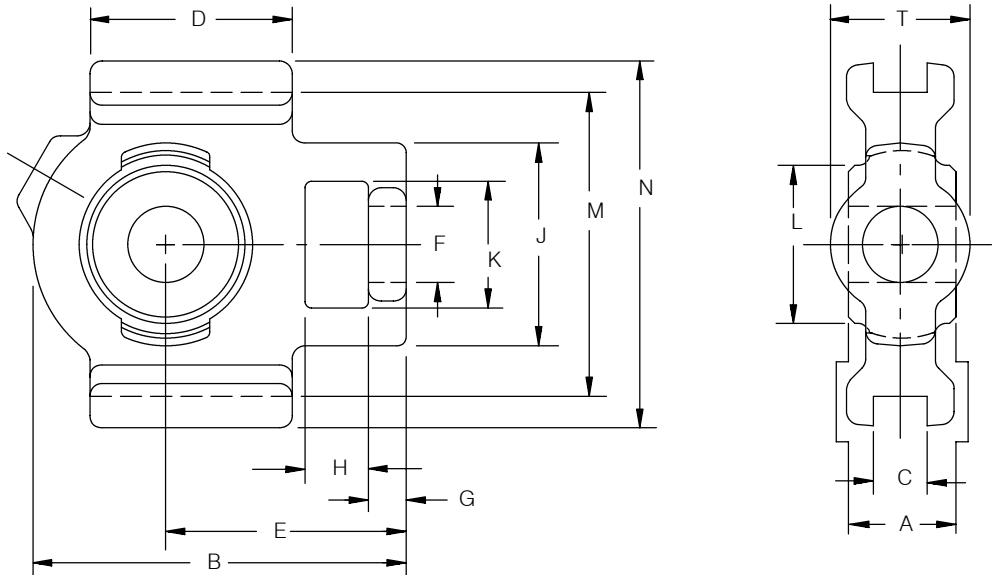
SELECTION/DIMENSIONS

Sleeve Bearings–SOLIDLUBE–Metric

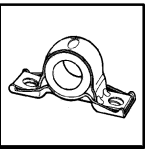
20MM THRU 75MM SOLIDLUBE LT NARROW SLOT TAKE-UP BEARING-METRIC



20MM THRU 75MM SOLIDLUBE LT WIDE SLOT TAKE-UP BEARING-METRIC



FEATURES/BENEFITS PAGE B11-2	HOW TO ORDER/ NOMENCLATURE PAGE B11-4	SELECTION PAGE B11-8	SOLIDLUBE INCH PAGES B11-25 & B11-27
---------------------------------	---	-------------------------	---



SELECTION/DIMENSIONS

Sleeve Bearings–SOLIDLUBE–Metric

20MM THRU 75MM SOLIDLUBE LT NARROW SLOT TAKE-UP BEARING-METRIC

Series	Shaft Size	LT700			LT1000			Used on Frame	A
		Part Number	Description	Wt. (Kg)	Part Number	Description	Wt. (Kg)		
204	20mm	034293	NSTU-LT7-20M	.77	034303	NSTU-LT10-20M	.77	WS-300	25.4
205	25mm	034294	NSTU-LT7-25M	.77	034304	NSTU-LT10-25M	.77	WS-300	27.0
206	30mm	034295	NSTU-LT7-30M	1.22	034305	NSTU-LT10-30M	1.22	WS-308	30.2
207	35mm	034296	NSTU-LT7-35M	1.36	034306	NSTU-LT10-35M	1.36	WS-308	33.3
209	40mm	034297	NSTU-LT7-40M	2.22	034307	NSTU-LT10-40M	2.22	WS-400	39.7
	45mm	034298	NSTU-LT7-45M	2.18	034308	NSTU-LT10-45M	2.18		
210	50mm	034299	NSTU-LT7-50M	2.40	034309	NSTU-LT10-50M	2.40	WS-400	41.3
212	60mm	034300	NSTU-LT7-60M	3.18	034310	NSTU-LT10-60M	3.18	WS-502	46.0

Shaft Size	B	C	D	E	F Screw Dia. (inch)	G	H	J	L	M	N	P (Inch)
20mm	88.9	6.4	38.1	55.6	3/4	11.1	22.2	34.9	34.9	66.7	79.4	5/16
25mm	90.5	6.4	38.1	55.6	3/4	11.1	22.2	34.9	39.7	66.7	79.4	5/16
30mm	109.5	6.4	63.5	68.3	3/4	11.1	23.8	34.9	46.0	88.9	104.8	5/16
35mm	114.3	6.4	63.5	68.3	3/4	11.1	23.8	34.9	54.0	88.9	104.8	5/16
40mm, 45mm	138.1	7.9	76.2	82.6	7/8	12.7	31.0	41.3	65.1	101.6	120.7	3/8
50mm	139.7	7.9	76.2	82.6	7/8	12.7	27.8	41.3	71.4	101.6	120.7	3/8
60mm	169.9	7.9	95.3	95.3	1	15.1	32.5	41.3	88.9	125.4	146.1	7/16

All Dimensions Are in Millimeters Unless Other Specified.

20MM THRU 75MM SOLIDLUBE LT WIDE SLOT TAKE-UP BEARING-METRIC

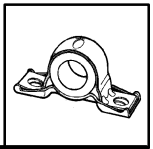
Series	Shaft Size	700 Series			1000 Series			Used on Frame	A	B
		Part Number	Description	Wt. (Kg)	Part Number	Description	Wt. (Kg)			
204	20mm	034313	WSTU-LT7-20M	1.09	034323	WSTU-LT10-20M	1.09	WS-300	25.4	93.7
205	25mm	034314	WSTU-LT7-25M	1.09	034324	WSTU-LT10-25M	1.09	WS-300	27.0	96.8
206	30mm	034315	WSTU-LT7-30M	1.41	034325	WSTU-LT10-30M	1.41	WS-308	30.2	111.1
207	35mm	034316	WSTU-LT7-35M	1.77	034326	WSTU-LT10-35M	1.77	WS-308	33.3	123.8
209	40mm	034317	WSTU-LT7-40M	2.77	034327	WSTU-LT10-40M	2.77	WS-400	39.7	142.9
	45mm	034318	WSTU-LT7-45M	2.72	034328	WSTU-LT10-45M	2.72			
210	50mm	034319	WSTU-LT7-50M	2.95	034329	WSTU-LT10-50M	2.95	WS-400	41.3	147.6
212	60mm	034320	WSTU-LT7-60M	4.58	034330	WSTU-LT10-60M	4.58	WS-502	46.0	190.5
215	70mm	034321	WSTU-LT7-70M	5.90	034331	WSTU-LT10-70M	5.90	WS-515	69.1	231.8
	75mm	034322	WSTU-LT7-75M	5.67	034332	WSTU-LT10-75H	5.67			

Shaft Size	C	D	E	F Bolt Dia. (inch)	G	H	J	K	L	M	N	T
20mm	13.5	50.8	60.3	3/4	9.5	15.9	50.8	31.8	34.9	76.2	92.1	34.9
25mm	13.5	50.8	61.9	13/16	9.5	15.9	50.8	33.3	39.7	76.2	92.1	34.9
30mm	13.5	57.2	69.9	7/8	9.5	15.9	55.6	36.5	46.0	88.9	104.8	41.3
35mm	13.5	63.5	77.8	7/8	23.7	15.9	63.5	36.5	54.0	88.9	104.8	41.3
40mm, 45mm	17.5	82.6	87.3	1-1/8	15.9	19.1	82.6	49.2	65.1	101.6	120.7	49.2
50mm	17.5	85.7	90.5	1-1/8	15.9	19.1	82.6	49.2	71.4	101.6	120.7	49.2
60mm	27.0	101.6	119.1	1-3/8	19.1	31.8	101.6	63.5	88.9	130.2	149.2	63.5
70mm, 75mm	27.0	120.7	139.7	1-9/16	20.6	31.8	111.1	69.9	100.0	150.8	169.9	69.9

All Dimensions Are in Millimeters Unless Other Specified.

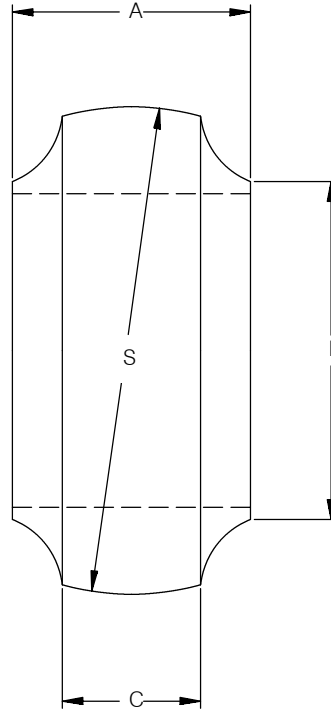
FEATURES/BENEFITS PAGE B11-2	HOW TO ORDER/ NOMENCLATURE PAGE B11-4	SELECTION PAGE B11-8	SOLIDLUBE INCH PAGES B11-25 & B11-27
---------------------------------	---	-------------------------	---

SELECTION/DIMENSIONS



Sleeve Bearings—SOLIDLUBE—Metric

20MM THRU 75MM SOLIDLUBE LT INSERTS—METRIC



SOLIDLUBE LT Inserts—Metric

Series	Shaft Size	700 Series			1000 Series			A	C	L	S
		Part Number	Description	Wt. (Kg)	Part Number	Description	Wt. (Kg)				
204	20mm	034454	INS-LT7-20M	.14	034455	INS-LT10-20M	.14	25.4	15.9	34.9	46.850 / 46.800
205	25mm	034456	INS-LT7-25M	.14	034457	INS-LT10-25M	.14	27.0	15.9	39.7	51.854 / 51.803
206	30mm	034458	INS-LT7-30M	.32	034459	INS-LT10-30M	.32	30.2	17.5	46.0	61.849 / 61.798
207	35mm	034460	INS-LT7-35M	.45	034461	INS-LT10-35M	.45	33.3	20.6	54.0	71.857 / 71.806
209	40mm	034462	INS-LT7-40M	.73	034463	INS-LT10-40M	.73	39.7	20.6	65.1	84.874 / 84.823
	45mm	034464	INS-LT7-45M	.64	034465	INS-LT10-45M	.64				
210	50mm	034466	INS-LT7-50M	.73	034467	INS-LT10-50M	.73	41.3	22.2	71.4	89.853 / 89.802
212	60mm	034468	INS-LT7-60M	1.45	034469	INS-LT10-60M	1.45	46.0	27.0	88.9	109.880 / 109.830
215	70mm	034470	INS-LT7-70M	2.50	034471	INS-LT10-70M	2.50	69.1	30.2	100.0	129.883 / 129.832
	75mm	034472	INS-LT7-75M		034473	INS-LT10-75M					

All Dimensions Are in Millimeters Unless Other Specified.

FEATURES/BENEFITS PAGE B11-2	HOW TO ORDER/ NOMENCLATURE PAGE B11-4	SELECTION PAGE B11-8	SOLIDLUBE INCH PAGES B11-28 & B11-29
---------------------------------	---	-------------------------	---