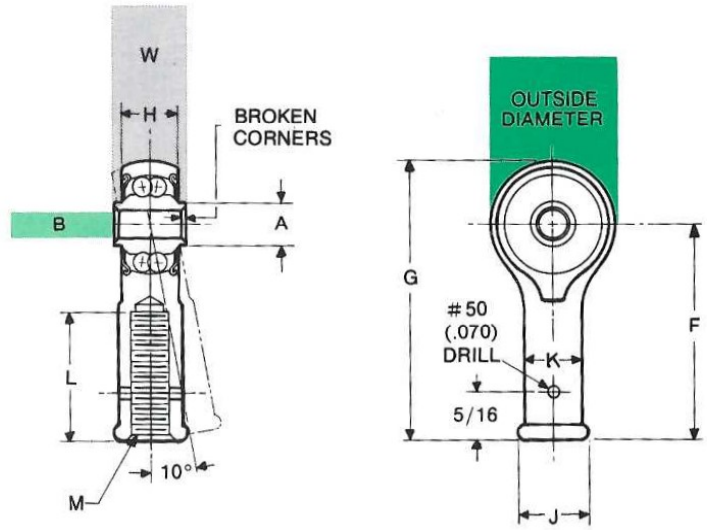


# REP Series Female Thread

MS21153 • MIL-B-6039

- Precision series.
- Female thread.
- Double row, ball, self-aligning.
- 10° permissible misalignment in either direction.
- These bearings are manufactured with an internal radial play of .0004" (.010 mm) max. Inner and outer raceway surface finish = 8 micro inches AA max.
- Equipped with Teflon seals.
- Exposed surfaces as mounted are cadmium plated.
- Prepacked with lubricant conforming to MIL-G-81322.
- Outer Shank — 90,000 p.s.i. Min. Tensile Strength.



## DIMENSIONS • TOLERANCES

Bearing Number	MS 21153 Dash No.	Bore +0.0000 -0.0003 +0.000 -0.008	Outside Diameter ±0.010 ±.25	Widths		A	F	G	L <sup>(1)</sup>	J	K	M UNJF-3B Threads Per MIL-S-8879 Size	Balls No.	Weight Approx.		
				W +0.000 -0.005 +0.00 -0.13	H ±0.10 ±.25										Approx.	Ref.
		in. mm	in. mm	in. mm	in. mm	in. mm	in. mm	in. mm	in. mm	in. mm	in. mm			lbs. kg		
REPB3N	FS464	-1	.1900 4.826	.781 19.84	.437 11.10	.328 8.33	.281 7.14	1.375 34.92	1.766 44.86	.812 20.62	.438 <sup>(4)</sup> 11.13 <sup>(4)</sup>	.375 9.52	1/4-28RH	20	1/8	.05 .023
REP3FL4-3	FS464	-5	.1900 4.826	.781 19.84	.437 11.10	.328 8.33	.281 7.14	1.375 34.92	1.766 44.86	.812 20.62	.438 <sup>(4)</sup> 11.13 <sup>(4)</sup>	.375 9.52	1/4-28LH	20	1/8	.05 .023
REPB3N-2	FS464	-2	.1900 4.826	.781 19.84	.437 11.10	.328 8.33	.281 7.14	1.375 34.92	1.766 44.86	.812 20.62	.438 <sup>(5)</sup> 11.13 <sup>(5)</sup>	.438 11.13	5/16-24RH	20	1/8	.06 .027
REP3F4	FS464	-3	.1900 4.826	.781 19.84	.500 12.70	.328 8.33	.281 7.14	1.375 34.92	1.766 44.86	.812 20.62	.438 <sup>(4)</sup> 11.13 <sup>(4)</sup>	.375 9.52	1/4-28RH	20	1/8	.06 .027
REP3FL4	FS464	-4	.1900 4.826	.781 19.84	.500 12.70	.328 8.33	.281 7.14	1.375 34.92	1.766 44.86	.812 20.62	.438 <sup>(4)</sup> 11.13 <sup>(4)</sup>	.375 9.52	1/4-28LH	20	1/8	.06 .027
REP4F5	FS464	-6	.2500 6.350	.938 23.83	.593 15.06	.438 11.13	.345 8.76	1.469 37.31	1.938 49.23	.812 20.62	.438 <sup>(5)</sup> 11.13 <sup>(5)</sup>	.438 11.13	5/16-24RH	22	5/32	.07 .032
REP4F5-5 <sup>(2)</sup>	FS464	-6C	.2500 6.350	.938 23.83	.593 15.06	.438 11.13	.345 8.76	1.469 37.31	1.938 49.23	.812 20.62	.438 <sup>(5)</sup> 11.13 <sup>(5)</sup>	.438 11.13	5/16-24RH	22	5/32	.07 .032
REP4FL5	FS464	-7	.2500 6.350	.938 23.83	.593 15.06	.438 11.13	.345 8.76	1.469 37.31	1.938 49.23	.812 20.62	.438 <sup>(5)</sup> 11.13 <sup>(5)</sup>	.438 11.13	5/16-24LH	22	5/32	.07 .032
REP4FL5-5 <sup>(2)(3)</sup>	FS464	-7C	.2500 6.350	.938 23.83	.593 15.06	.438 11.13	.345 8.76	1.469 37.31	1.938 49.23	.812 20.62	.438 <sup>(5)</sup> 11.13 <sup>(5)</sup>	.438 11.13	5/16-24LH	22	5/32	.07 .032
REP4F7	FS464	-8	.2500 6.350	.938 23.83	.593 15.06	.438 11.13	.345 8.76	1.875 47.62	2.344 59.54	1.125 28.58	.625 15.88	.625 15.88	7/16-20RH	22	5/32	.08 .036
REP4FL7 <sup>(3)</sup>	FS464	-9	.2500 6.350	.938 23.83	.593 15.06	.438 11.13	.345 8.76	1.875 47.62	2.344 59.54	1.125 28.58	.625 15.88	.625 15.88	7/16-20LH	22	5/32	.08 .036
REP5F5	FS464	-10	.3125 7.938	1.250 31.75	.870 22.10	.656 16.66	.501 12.73	1.875 47.62	3.062 77.77	1.000 25.40	.438 11.13	.438 11.13	5/16-24RH	22	3/16	.10 .045
REP5FL5 <sup>(3)</sup>	FS464	-11	.3125 7.938	1.250 31.75	.870 22.10	.656 16.66	.501 12.73	1.875 47.62	3.062 77.77	1.000 25.40	.438 11.13	.438 11.13	5/16-24LH	22	3/16	.10 .045

(1) Length includes maximum of two incomplete threads.  
 (2) NAS 513 Locking Slot in Shank.  
 (3) Consult FAFNIR for availability.  
 (4) Bead diameter.  
 (5) Hex diameter across flats.