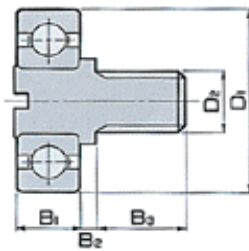


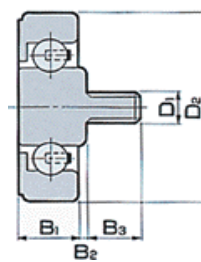
8 RADIAL BEARING with SHAFT

Part No.	Dimension (mm)					Type	Load Rat.(kgf)		Remarks
	D ₁	D ₂	B ₁	B ₂	B ₃		Cr	Cor	
CD-196/P5	19.0	5.0	6.0	0.5	3.2	5	3		Polyacetals Outer Ring, Pin type
CD-196/SS0.5	19.0	M6.0	6.0	0.5	8.0	4	5		Polyacetals Outer Ring, Screw type
CD227/P5	22.0	5.0	7.0	1.0	3.5	5	12		Polyacetals Outer Ring, Pin type
CD227/S-1	22.0	M6.0	7.0	1.0	8.0	4	20		Polyacetals Outer Ring, Screw type
CD-247/P5	24.0	5.0	7.0	1.0	3.5	5	12		Polyacetals Outer Ring, Pin type
CD-247/S-1	24.0	M6.0	7.0	1.0	8.0	4	20		Polyacetals Outer Ring, Screw type
F-826-SW	26.0	M8.0	8.0	2.0	12.0	3	465	201	629ZZ Bearing inserted, Screw type
CD-267/P5	26.0	5.0	7.0	1.0	3.5	5	12		Polyacetals Outer Ring, Pin type
CD-267/S-1	26.0	M6.0	7.0	1.0	8.0	4	20		Polyacetals Outer Ring, Screw type
#6200 with Shaft	30.0	5.9	9.0	1.0	3.7	3	520	244	Pin type
CD-307/P5	30.0	5.0	7.0	1.0	3.5	5	12		Polyacetals Outer Ring, Pin type
CD-307S-1	30.0	M6.0	7.0	1.0	8.0	5	20		Polyacetals Outer Ring, Screw type
PCR350R-U	35.0	M6.0	12.0	10.5	10.0	6			Round Polyurethane Tire, Screw type

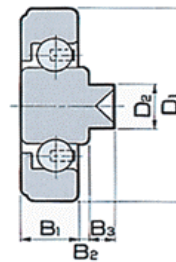
Type 3



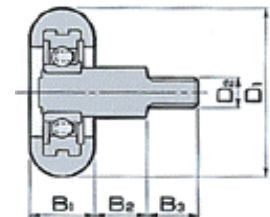
Type 4



Type 5



Type 6



FUJI SEISAKUSHO CO. LTD.

Minamisenba No.2 Daiji Bldg.
 No. 1-10, 3-chome, Minamisemba
 Chuo-ku, Osaka 542-0081 Japan
 Phone : 81-6-6243-3771 / Fax : 81-6-6243-6445 / e-mail : info@fuji-bearing.com