

# INSERT BEARINGS



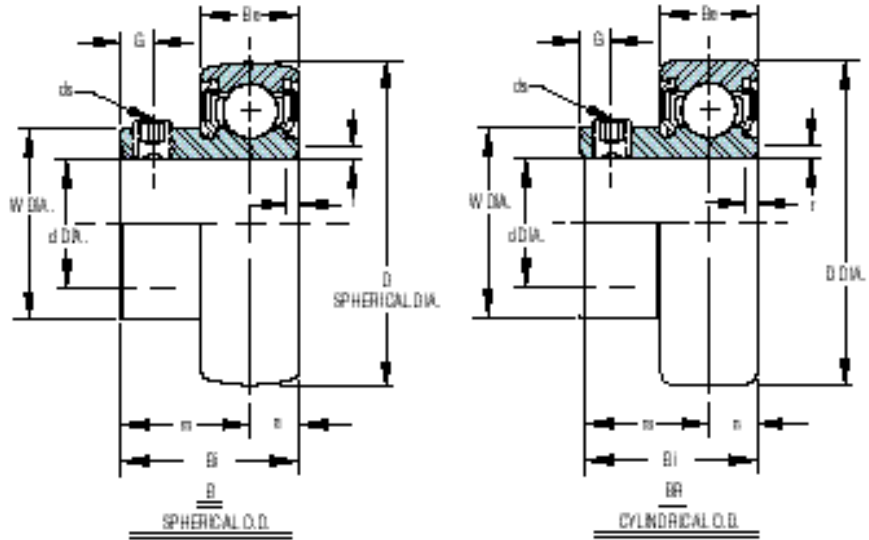
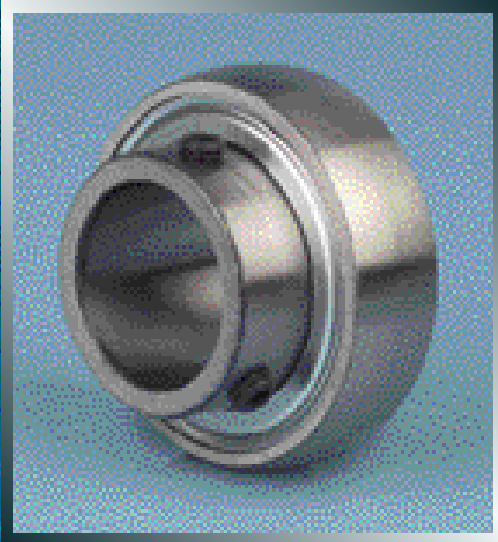
## TABLE OF CONTENTS

### INSERT BEARINGS

- B SERIES
- KH 200 SERIES

# INSERT BEARINGS B SERIES

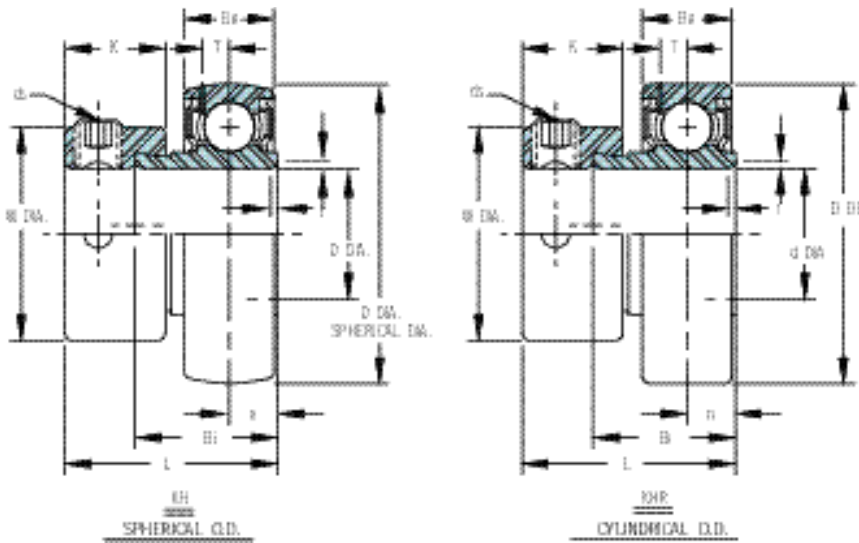
ABEC-1



## SET SCREW LOCKING

BEARING NUMBER		DIMENSIONS inch										Basic Load Rating (lbs.)		Weight (lbs.)
Spherical O.D.	Cylindrical O.D.	d	D	Bi	Be	r	n	m	G	ds(UNF)	W	Dynamic <sup>1</sup> C	Static Co	
B 1-8	BR 1-8	1/2	1.5758	0.866	0.472	0.039	0.236	0.630	0.157	10-32	0.9720	2153	1076	0.22
B 2-9	BR 2-9	9/16												0.20
B 2-10	BR 2-10	5/8												0.15
B 3-11	BR 3-11	11/16												0.15
B 4-12	BR 4-12	3/4	1.8504	0.984	0.551	0.059	0.276	0.697	0.197	1/4-28	1.1420	2882	1486	0.26
B 5-14	BR 5-14	7/8	2.0472	1.063	0.591	0.059	0.295	0.795	0.217	1/4-28	1.3390	3153	1769	0.35
B 5-15	BR 5-15	15/16												
B 5-16	BR 5-16	1												
B 6-18	BR 6-18	1-1/8	2.4409	1.142	0.630	0.059	0.315	0.878	0.236	1/4-28	1.5940	4376	2530	0.55
B 6-19	BR 6-19	1-3/16												
B 7-20	BR 7-20	1-1/4	2.8346	1.260	0.669	0.079	0.335	0.961	0.256	5/16-24	1.8900	5778	3466	0.84
B 7-21	BR 7-21	1-5/16												
B 7-22	BR 7-22	1-3/8												
B 7-23	BR 7-23	1-7/16												

<sup>1</sup> Dynamic Loads are based on 1 million revolutions.



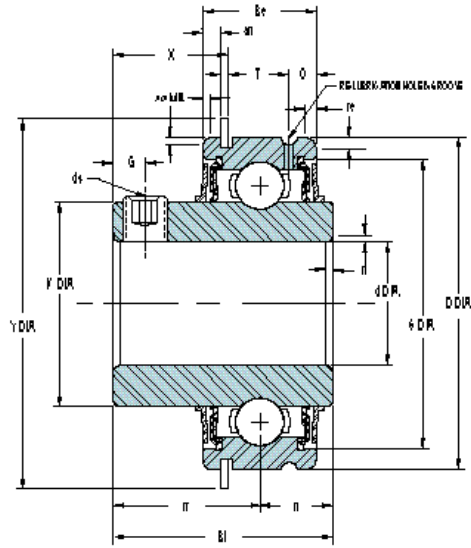
## ECCENTRIC COLLAR LOCKING

<sup>1</sup> Dynamic Loads are based on 1 million revolutions.

BEARING NUMBER		DIMENSIONS inch											Basic Load Rating (lbs.)		Weight (lbs.)
Spherical O.D.	Cylindrical O.D.	d	D	L	Bi	Be	r	T	n	W	K	ds(UNF)	Dynamic <sup>1</sup> C	Static Co	
KH 201-8+ER	KHR 201-8+ER	1/2	1.5748	1.1250	0.7520	0.4720	0.0390	0.1420	0.2560	1.1250	0.5313	1/4-28	2153	1076	0.26
KH 202-9+ER	KHR 202-9+ER	9/16													0.24
KH 202-10+ER	KHR 202-10+ER	5/8													0.22
KH 203-11+ER	KHR 203-11+ER	11/16	1.8504	1.1620	0.8460	0.5510	0.0590	0.1610	0.2950	1.3125	0.5313	1/4-28	2882	1486	0.35
KH 204-12+ER	KHR 204-12+ER	3/4													
KH 205-14+ER	KHR 205-14+ER	7/8													
KH 205-15+ER	KHR 205-15+ER	15/16	2.0472	1.2188	0.8460	0.5910	0.0590	0.1610	0.2950	1.5000	0.5313	1/4-28	3135	1769	0.44
KH 205-16+ER	KHR 205-16+ER	1													
KH 206-18+ER	KHR 206-18+ER	1-1/8													
KH 206-19+ER	KHR 206-19+ER	1-3/16	2.4409	1.4063	0.9380	0.6300	0.0590	0.1930	0.3540	1.7500	0.6250	5/16-24	4376	2530	0.68
KH 206-20+ER	KHR 206-20+ER	1-1/4													
KH 207-20+ER	KHR 207-20+ER	1-1/4													
KH 207-21+ER	KHR 207-21+ER	1-5/16	2.8346	1.5313	1.0000	0.6690	0.0790	0.2130	0.3350	2.1875	0.6875	5/16-24	5778	3466	1.08
KH 207-22+ER	KHR 207-22+ER	1-3/8													
KH 207-23+ER	KHR 207-23+ER	1-7/16													
KH 208-24+ER	KHR 208-24+ER	1-1/2													
KH 208-25+ER	KHR 208-25+ER	1-9/16	3.1496	1.7188	1.1880	0.7090	0.0790	0.2320	0.4330	2.3750	0.7188	3/8-24	6549	4023	1.37
KH 209-26+ER	KHR 209-26+ER	1-5/8													
KH 209-27+ER	KHR 209-27+ER	1-11/16													
KH 209-28+ER	KHR 209-28+ER	1-3/4	3.3465	1.7188	1.1880	0.7480	0.0790	0.2440	0.4330	2.5000	0.7188	3/8-24	7359	4596	1.43
KH 210-30+ER	KHR 210-30+ER	1-7/8													
KH 210-31+ER	KHR 210-31+ER	1-15/16													
KH 211-32+ER	KHR 211-32+ER	2	3.9370	1.7188	1.2810	0.8270	0.0980	0.2760	0.4720	3.0000	0.8125	7/16-20	9758	6564	2.07
KH 211-34+ER	KHR 211-34+ER	2-1/8													
KH 211-35+ER	KHR 211-35+ER	2-3/16													

# INSERT BEARINGS SER200 SERIES with SNAP RING

ABEC-1



BEARING NUMBER	DIMENSIONS inch																Basic Load Rating (lbs.)				
	d	D	Bi	Be	ri	re	r1 (Min.)	n	m	G	ds(UNF)	o	W	an	T	Y (Max.)	X	S	Dynamic C	Static Co	Weight (lbs.)
SER 201-8	1/2																				0.60
SER 202-9	9/16	1.8504	1.2188	0.6250	0.039	0.059	0.020	0.4063	0.8125	0.177	1/4-28	0.1500	1.1420	0.0938	0.0420	2.0750	0.6360	1.6140	2882	1486	0.55
SER 202-10	5/8																				
SER 203-11	11/16																				0.51
SER 204-12	3/4	1.8504	1.2188	0.6250	0.059	0.059	0.020	0.4063	0.8125	0.177	1/4-28	0.1400	1.1420	0.0938	0.0420	2.0750	0.6360	1.6140	2882	1486	0.48
SER 205-14	7/8																				
SER 205-15	15/16	2.0472	1.3750	0.7500	0.059	0.059	0.020	0.5156	0.8594	0.217	1/4-28	0.2031	1.3390	0.0938	0.0420	2.2800	0.6200	1.8110	3153	1769	0.62
SER 205-16																					
SER 206-17	1-1/16																				
SER 206-18	1-1/8	2.4409	1.5000	0.8750	0.059	0.059	0.020	0.6250	0.8750	0.217	1/4-28	0.2280	1.5940	0.1250	0.0650	2.6650	0.6280	2.1380	4376	2530	0.84
SER 206-19	1-3/16																				
SER 207-20	1-1/4																				
SER 207-21	1-5/16	2.8346	1.6875	0.9375	0.079	0.079	0.020	0.6875	1.0000	0.256	5/16-24	0.2400	1.8900	0.1250	0.0650	3.0950	0.7210	2.5000	5778	3466	1.23
SER 207-22	1-3/8																				
SER 207-23	1-7/16																				
SER 208-24	1-1/2																				
SER 208-25	1-9/16	3.1496	1.9375	1.0938	0.079	0.079	0.020	0.7500	1.1875	0.299	5/16-24	0.2890	2.0870	0.1250	0.0650	3.4100	0.8310	2.7280	6549	4023	1.92
SER 209-26	1-5/8																				
SER 209-27	1-11/16	3.3465	1.9375	1.0938	0.079	0.079	0.020	0.7500	1.1875	0.315	5/16-24	0.2500	2.2560	0.1250	0.0650	3.6060	0.8310	2.9250	7359	4596	2.09
SER 209-28	1-3/4																				
SER 210-30	1-7/8																				
SER 210-31	1-15/16	3.5433	2.0313	1.1250	0.079	0.079	0.020	0.7500	1.2813	0.354	3/8-24	0.2969	2.4800	0.1250	0.0950	3.7990	0.9390	3.1380	7890	5209	2.27
SER 211-32	2																				
SER 211-34	2-1/8	3.9370	2.1875	2.1875	0.098	0.098	0.020	0.8750	1.3125	0.354	3/8-24	0.2969	2.7560	0.1250	0.0950	4.1930	0.9390	3.5710	9758	6564	2.67
SER 211-35	2-3/16																				
SER 212-36	2-1/4																				
SER 212-38	2-3/8	4.3307	2.5625	1.2500	0.098	0.098	0.020	1.0000	1.5625	0.394	3/8-24	0.2969	3.0310	0.1250	0.0950	4.5910	1.1580	3.9370	11801	8074	3.70
SER 212-39	2-7/16																				

<sup>1</sup> Dynamic Loads are based on 1 million revolutions.