

HIWIN[®]

Linear Bearing

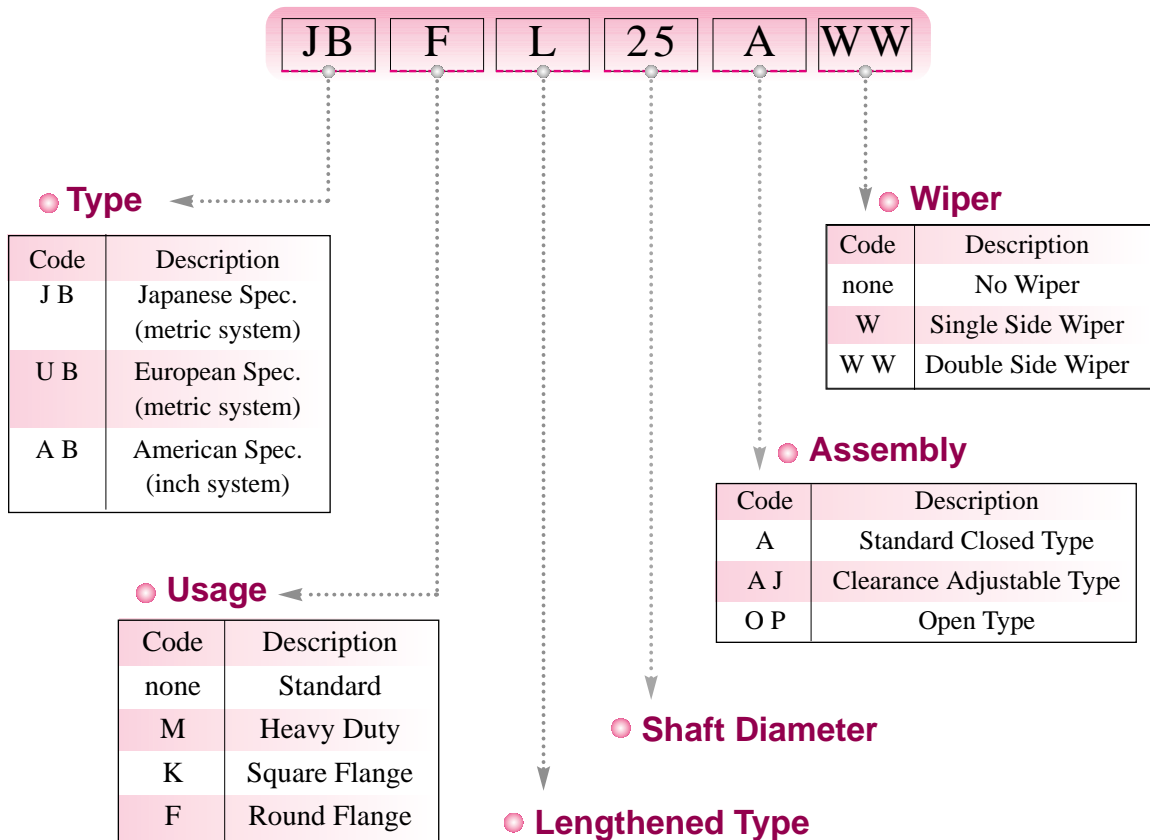
CONTENTS

1. HIWIN Linear Bearing General Information	
● Characteristics	1
● Description	1
● Fitting	2
2. Configuration and Specifications	
2.1 Inch Dimension	
AB Series: Standard Closed type, Clearance Adjustable Type, Open Type	4
ABM Series: Standard Closed type, Clearance Adjustable Type, Open Type	5
2.2 Metric Dimension	
UB Series: Standard Closed type, Clearance Adjustable Type, Open Type	6
UBM Series: Standard Closed type, Clearance Adjustable Type, Open Type	7
2.3 Metric Dimension – Japanese Exclusive	
JB Series: Standard Closed type, Clearance Adjustable Type, Open Type	8
JBM Series: Standard Closed type, Clearance Adjustable Type, Open Type	9
Japanese Lengthened Type: JBL	10
Japanese Flanged Type: JBF & JBK	11
Japanese Flanged & Lengthened Type: JBFL & JBKL	12
2.4 Housing (JBH Series)	13
2.5 Bearing Set (JBA Series)	14

● Characteristics of *HIWIN* Linear Bearing

- **HIWIN linear bearings** enable high precision linear motions on round shafts by utilizing endlessly recirculating balls.
- The patented recirculation curve enables **HIWIN**'s linear bearing to sustain heavy loads with low noise and high stiffness.
- **HIWIN**'s diverse lines of linear bearing perform under almost any environmental conditions and load capacities to satisfy a wide range of applications.

● Description



● Fitting

Linear bearing and shaft or housing fitting we recommended as following table:

Table 1. Recommended fitting tolerance

Type		Shaft		(Housing)	
Model	Accuracy	Normal clearance	Close clearance	Loose fit	Transition fit
JB	General grade	g6	h6	H7	J7
	Precision grade	g5	h5	H6	J6
AB	General grade	g6	h6	H7	J7
	Precision grade	g5	h5	H6	J6
UB	General grade	g6	j6	H7	J7

Note: In general fitting condition shaft is clearance fit

● Installation:

1. Installation of the Standard Closed Type:

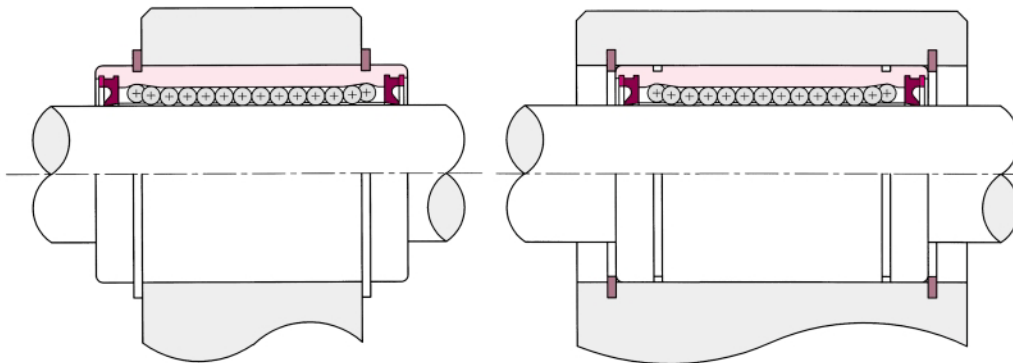


Fig. 1 Fixing is executed with snap rings

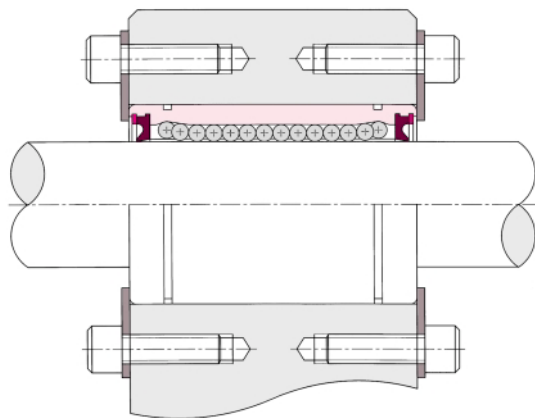


Fig. 2 Fixing is executed with setting plate

2. Installation of the Clearance Adjustment Type: As Fig. 3 shown

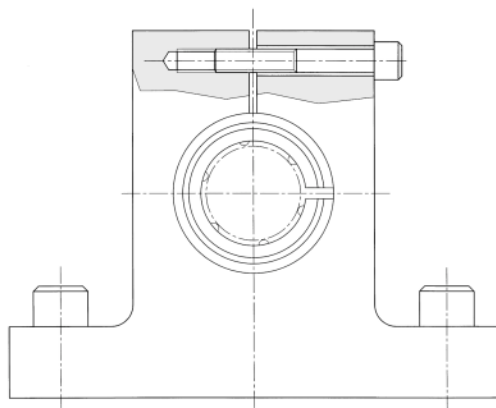


Fig. 3

3. Installation of the Open Type : As Fig. 4 shown

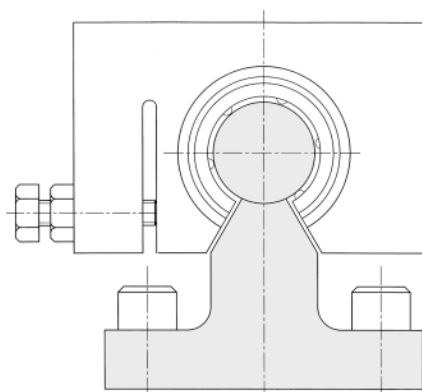


Fig. 4

4. Installation of the Flanged Type: As Fig. 5 shown

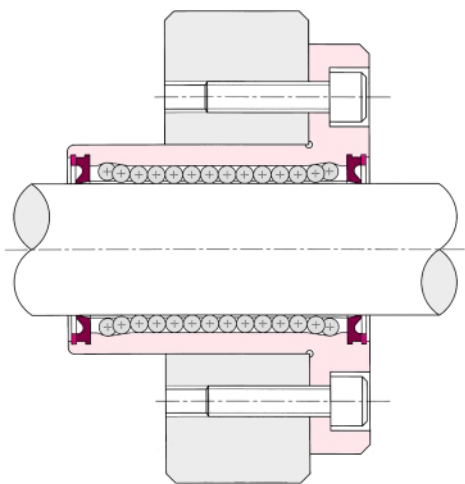
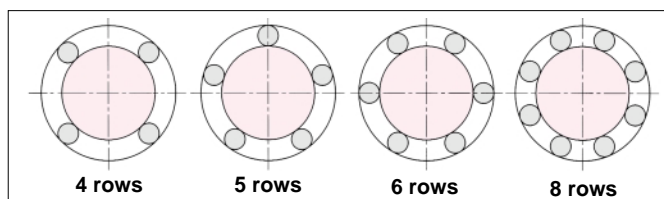


Fig. 5

Note: When the installation of housing is executed according to ball position in relation to the load direction as below, the load rating will be increasing and the life performance can be improved.

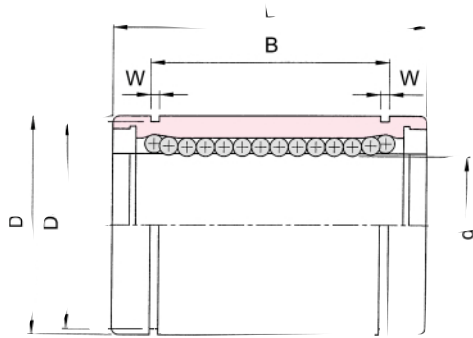




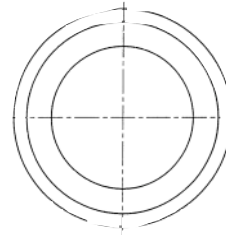
AB

Series

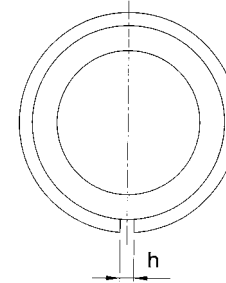
~ Inch Dimension Series Used Mainly in the U.S.A



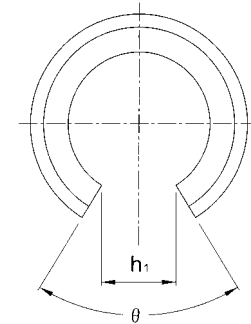
AB - *A**
(Standard Closed Type)



AB - *AJ**
(Clearance Adjustable Type)



AB - *OP**
(Open Type)



[Click Model No. to Download More...](#)

Shaft Diameter d in	Model						Major Dimensions and Tolerance														Load Capacity	
	Standard Closed Type	Ball Circuit	Clearance Adjustable Type	Ball Circuit	Open Type	Ball Circuit	d		D		L		B		W in	D1 in	h in	h1 in	θ	Basic Dynamic Load Rating C(Lbf)	Basic Static Load Rating Co(Lbf)	
							in	Tolerance in	in	Tolerance in	in	Tolerance in	in	Tolerance in								
							Precision	General														
0.375	AB-06A	4	-		-		0.375		0.6250		0.875		0.6358		0.0390	0.5880	-	-	-	52	72	
0.500	AB-08A	4	AB-08AJ	4	AB-08OP	3	0.500	0 -0.00025	0.8750	0 -0.00050	1.250	0	0.9625	0	0.0459	0.8209	0.06	0.38	80°	117	178	
0.625	AB-10A	4	AB-10AJ	4	AB-10OP	3	0.625		1.1250		1.500	-0.008	1.1039	-0.008	0.0559	1.0590	0.06	0.46	80°	178	270	
0.750	AB-12A	5	AB-12AJ	5	AB-12OP	4	0.750		1.2500	0	1.625		1.1657		0.0559	1.1760	0.06	0.44	60°	198	315	
1.000	AB-16A	6	AB-16AJ	6	AB-16OP	5	1.000	-0.00030	1.5625	-0.00065	2.250		1.7547		0.0679	1.4687	0.10	0.49	50°	225	360	
1.250	AB-20A	6	AB-20AJ	6	AB-20OP	5	1.250	0	2.0000	0	2.625	-0.012	2.0047	-0.012	0.0679	1.8859	0.10	0.6	50°	360	629	
1.500	AB-24A	6	AB-24AJ	6	AB-24OP	5	1.500	-0.00035	-0.0005	2.3750	-0.00075	3.000		2.4118		0.0859	2.2389	0.12	0.83	60°	499	921

Note: 1. Linear bearing with single side wiper (AB.....W) or with double side wiper (AB.....WW) are available.

2. 1 Lbf=0.4536 Kgf

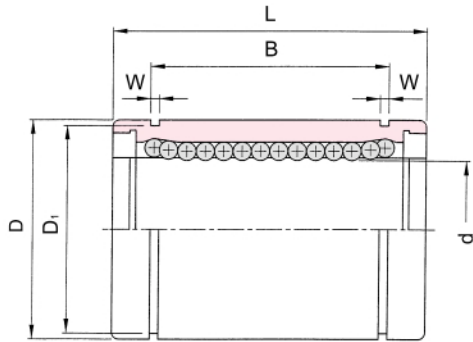
3. The tolerances stated above are valid for the "Standard Closed Type".



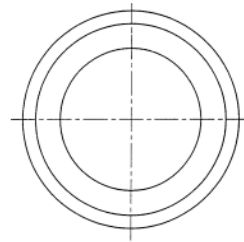
ABM

Series

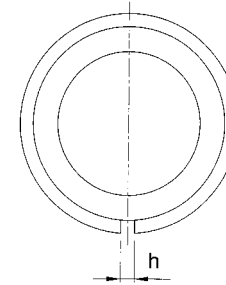
~Inch Dimension Series Used Mainly in the U.S.A



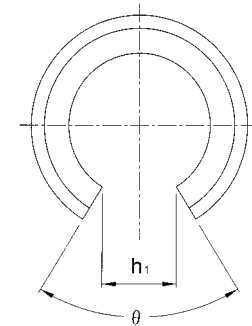
ABM - **A
(Standard Closed Type)



ABM - **AJ
(Clearance Adjustable Type)



ABM - **OP
(Open Type)



Shaft Diameter d in	Model						Major Dimensions and Tolerance														Load Capacity	
	Standard Closed Type	Ball Circuit	Clearance Adjustable Type	Ball Circuit	Open Type	Ball Circuit	d		D		L		B		W in	D1 in	h in	h1 in	θ	Basic Dynamic Load Rating C(Lbf)	Basic Static Load Rating Co(Lbf)	
							in	Tolerance	in	Tolerance	in	Tolerance	in	Tolerance								
							Precision	General	in	in	in	in										
0.500	ABM-08A	6	ABM-08AJ	6	ABM-08OP	4	0.500	0	0.8750	0	1.250	0	0.9625	0	0.0459	0.8209	0.06	0.43	100°	175	236	
0.625	ABM-10A	6	ABM-10AJ	6	ABM-10OP	4	0.625	-0.00025	1.1250	-0.00050	1.500	0	1.1039	0	0.0559	1.0590	0.06	0.53	100°	238	387	
0.750	ABM-12A	6	ABM-12AJ	6	ABM-12OP	4	0.750	0	1.2500	0	1.625	-0.00040	1.1657	-0.008	0.0559	1.1760	0.06	0.63	100°	265	405	
1.000	ABM-16A	8	ABM-16AJ	8	ABM-16OP	6	1.000	-0.00030	1.5625	-0.00065	2.250	0	1.7547	0	0.0679	1.4687	0.10	0.65	72°	301	481	
1.250	ABM-20A	8	ABM-20AJ	8	ABM-20OP	6	1.250	0	2.0000	0	2.625	0	2.0047	0	0.0679	1.8859	0.10	0.87	80°	481	832	
1.500	ABM-24A	8	ABM-24AJ	8	ABM-24OP	6	1.500	-0.00035	2.3750	-0.00075	3.000	-0.0005	2.4118	-0.012	0.0859	2.2389	0.12	1.04	80°	663	1214	

Note: 1. Linear bearing with single side wiper (ABM.....W) or with double side wiper (ABM.....WW) are available.

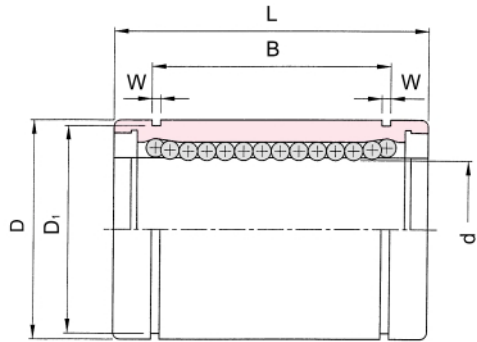
2. 1 Lbf=0.4536 Kgf

3. The tolerances stated above are valid for the "Standard Closed Type".

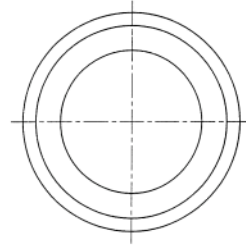


Series

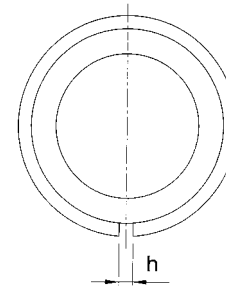
~ Metric Dimension Series Used Most Frequently in Europe



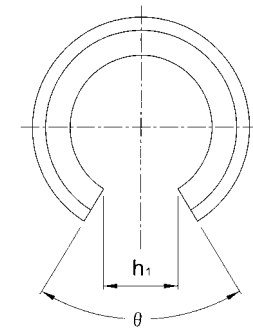
UB - * * A
(Standard Closed Type)



UB - * * AJ
(Clearance Adjustable Type)



UB - * * OP
(Open Type)



Shaft Diameter d mm	Model						Major Dimensions and Tolerance										Load Capacity				
	Standard Closed Type	Ball Circuit	Clearance Adjustable Type	Ball Circuit	Open Type	Ball Circuit	mm	d Tolerance μ m	mm	D Tolerance μ m	mm	L Tolerance μ m	mm	B Tolerance μ m	W mm	D1 mm	h mm	h1 mm	θ	Basic Dynamic Load Rating C(N)	Basic Static Load Rating Co(N)
8	UB-08A	4	UB-08AJ	4	-	-	8	+8	16	0 -8	25		16.5		1.1	15.2	1	-	-	280	420
12	UB-12A	5	UB-12AJ	5	UB-12OP	4	12	0	22	0	32	0	22.9	0	1.3	21	1.5	7	54°	640	950
16	UB-16A	5	UB-16AJ	5	UB-16OP	4	16	+9	26	-9	36	-200	24.9	-200	1.3	24.9	1.5	9.6	60°	720	1120
20	UB-20A	5	UB-20AJ	5	UB-20OP	4	20	-1	32		45		31.5		1.6	30.3	2	11.7	60°	920	1480
25	UB-25A	6	UB-25AJ	6	UB-25OP	5	25	+11	40	0 -11	58		44.1		1.85	37.5	2	12.5	60°	1070	1670
30	UB-30A	6	UB-30AJ	6	UB-30OP	5	30	-1	47		68	0	52.1	0	1.85	44.5	2	16.9	60°	1630	2850
40	UB-40A	6	UB-40AJ	6	UB-40OP	5	40	+13	62	0	80	-300	60.6	-300	2.15	59	3	22	60°	2250	4200
50	UB-50A	6	UB-50AJ	6	UB-50OP	5	50	-2	75	-13	100		77.6		2.65	72	3	21	50°	3950	8200

Note: 1. Linear bearing with single side wiper (UB.....W) or with double side wiper (UB.....WW) are available.

2. 1 Kgf=9.81 N=2.2046 Lbf

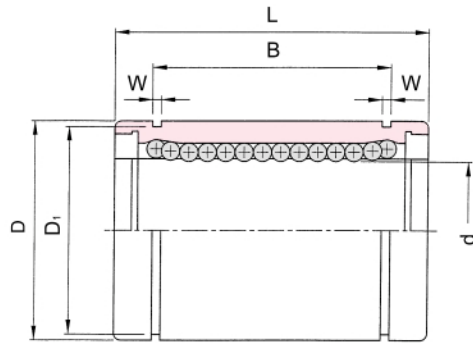
3. The tolerances stated above are valid for the "Standard Closed Type".



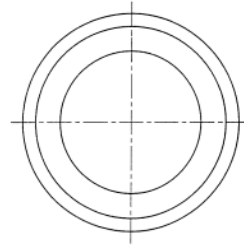
UBM

Series

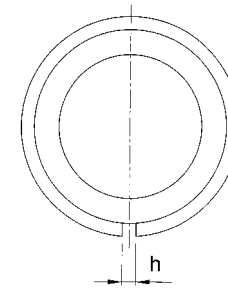
~ Metric Dimension Series Used Most Frequently in Europe



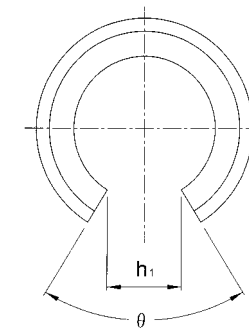
UBM - **A
(Standard Closed Type)



UBM - **AJ
(Clearance Adjustable Type)



UBM - **OP
(Open Type)



Shaft Diameter d mm	Model						Major Dimensions and Tolerance													Load Capacity	
	Standard Closed Type	Ball Circuit	Clearance Adjustable Type	Ball Circuit	Open Type	Ball Circuit	mm	d Tolerance μm	mm	D Tolerance μm	mm	L Tolerance μm	mm	B Tolerance μm	W mm	D1 mm	h mm	h1 mm	θ	Basic Dynamic Load Rating C(N)	Basic Static Load Rating Co(N)
12	UBM-12A	6	UBM-12AJ	6	UBM-12OP	4	12	+8 0	22	0	32	0	22.9	0	1.3	21	1.5	10	90°	660	1310
16	UBM-16A	6	UBM-16AJ	6	UBM-16OP	4	16	+9	26	-9	36	0	24.9	0	1.3	24.9	1.5	13.5	100°	800	1480
20	UBM-20A	6	UBM-20AJ	6	UBM-20OP	4	20	-1	32	0	45	0	31.5	0	1.6	30.3	2	16.8	100°	1050	2280
25	UBM-25A	8	UBM-25AJ	8	UBM-25OP	6	25	+11	40	-11	58	0	44.1	0	1.85	37.5	2	16.9	74°	1370	3470
30	UBM-30A	8	UBM-30AJ	8	UBM-30OP	6	30	-1	47	0	68	0	52.1	0	1.85	44.5	2	21.1	80°	2100	5920
40	UBM-40A	8	UBM-40AJ	8	UBM-40OP	6	40	+13 -2	62	-13	80	0	60.6	0	2.15	59	3	27.8	80°	3820	9250

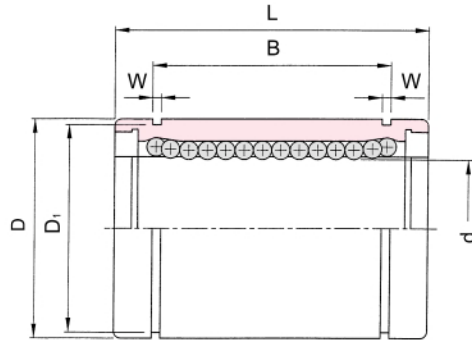
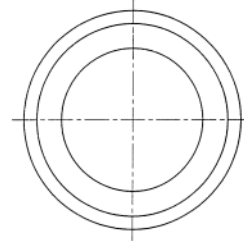
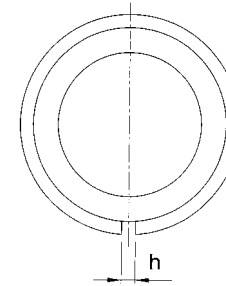
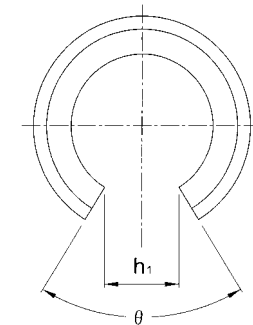
Note: 1. Linear bearing with single side wiper (UBM.....W) or with double side wiper (UBM.....WW) are available.

2. 1 Kgf=9.81 N=2.2046 Lbf

3. The tolerances stated above are valid for the "Standard Closed Type".


JB
Series

~ Metric Dimension Series Used Most Frequently in Japan


JB - * * A
 (Standard Closed Type)

JB - * * AJ
 (Clearance Adjustable Type)

JB - * * OP
 (Open Type)


Shaft Diameter d mm	Model						Major Dimensions and Tolerance										Load Capacity					
	Standard Closed Type	Ball Circuit	Clearance Adjustable Type	Ball Circuit	Open Type	Ball Circuit	d		D		L		B		W	D1	h	h1	θ	Basic Dynamic Load Rating C(N)	Basic Static Load Rating Co(N)	
							mm	Tolerance μm	mm	Tolerance μm	mm	Tolerance μm	mm	Tolerance μm								
6	JB-06A	4	-	-	-	-	6		12	0	19		13.5		1.1	11.5	-	-	-	206	265	
8	JB-08A	4	JB-08AJ	4	-	-	8		15	-11	24		17.5		1.1	14.3	1	-	-	274	392	
10	JB-10A	4	JB-10AJ	4	-	-	10	0 -6	0 -9	19		29		22		1.3	18	1	-	-	372	549
12	JB-12A	4	JB-12AJ	4	JB-12OP	3	12		21	0 -13	30	-200	23	-200	1.3	20	1.5	9.1	80°	412	598	
16	JB-16A	4	JB-16AJ	4	JB-16OP	3	16		28		37		26.5		1.6	27	1.5	11.7	80°	782	1176	
20	JB-20A	5	JB-20AJ	5	JB-20OP	4	20		32		42		30.5		1.6	30.5	1.5	11.6	60°	882	1382	
25	JB-25A	6	JB-25AJ	6	JB-25OP	5	25	0 -7	0 -10	40		59		41		1.85	38	2	12.5	60°	980	1568
30	JB-30A	6	JB-30AJ	6	JB-30OP	5	30		45		64		44.5		1.85	43	2.5	16.8	60°	1568	2744	
35	JB-35A	6	JB-35AJ	6	JB-35OP	5	35		52		70		49.5		2.1	49	2.5	17	50°	1666	3136	
40	JB-40A	6	JB-40AJ	6	JB-40OP	5	40	0 -8	0 -12	60		80		60.5		2.1	57	3	22	60°	2156	4018
50	JB-50A	6	JB50AJ	6	JB-50OP	5	50		80		100		74		2.6	76.5	3	25	50°	3820	7938	

Note: 1. Linear bearing with single side wiper (JB.....W) or with double side wiper (JB.....WW) are available.

2. 1 Kgf=9.81 N=2.2046 Lbf

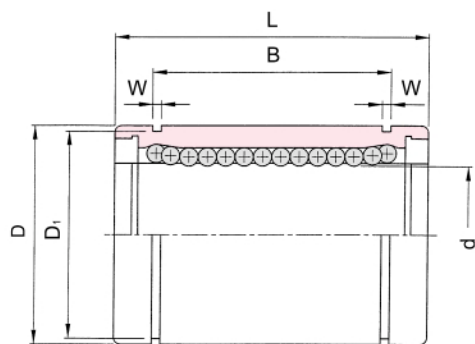
3. The tolerances stated above are valid for the "Standard Closed Type".



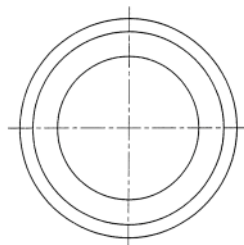
JBM

Series

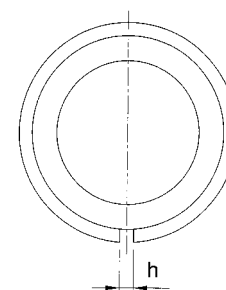
~ Metric Dimension Series Used Most Frequently in Japan



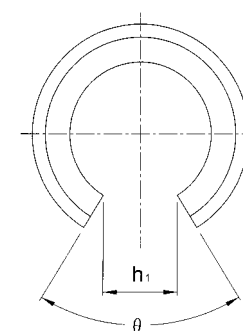
JBM - **A
(Standard Closed Type)



JBM - **AJ
(Clearance Adjustable Type)



JBM - **OP
(Open Type)



Shaft Diameter d mm	Model						Major Dimensions and Tolerance														Load Capacity	
	Standard Closed Type	Ball Circuit	Clearance Adjustable Type	Ball Circuit	Open Type	Ball Circuit	d		D		L		B		W mm	D1 mm	h mm	h1 mm	θ	Basic Dynamic Load Rating C(N)	Basic Static Load Rating Co(N)	
							mm	Tolerance	mm	Tolerance	mm	Tolerance	mm	Tolerance								
							μ m	μ m	μ m	μ m	μ m	μ m	μ m	μ m								
10	JBM-10A	6	JBM-10AJ	6	-	-	10	0	19	0	29	0	22	0	1.3	18	1	-	-	451	970	
12	JBM-12A	6	JBM-12AJ	6	JBM-12OP	4	12	-6	21	-13	30	0	23	0	1.3	20	1.5	10.4	100°	500	1049	
16	JBM-16A	6	JBM-16AJ	6	JBM-16OP	4	16	-	28	-	37	-200	26.5	-200	1.6	27	1.5	13.5	100°	941	2068	
20	JBM-20A	6	JBM-20AJ	6	JBM-20OP	4	20	-	32	-	42	-	30.5	-	1.6	30.5	1.5	16.6	100°	1049	2421	
25	JBM-25A	8	JBM-25AJ	8	JBM-25OP	6	25	0	40	0	59	0	41	0	1.85	38	2	17.9	80°	1176	2754	
30	JBM-30A	8	JBM-30AJ	8	JBM-30OP	6	30	-7	45	-16	64	0	44.5	0	1.85	43	2.5	21	80°	1882	4822	
40	JBM-40A	8	JBM-40AJ	8	JBM-40OP	6	40	0	60	0	80	0	60.5	-300	2.1	57	3	27.8	80°	2587	7056	

Note: 1. Linear bearing with single side wiper (JBM.....W) or with double side wiper (JBM.....WW) are available.

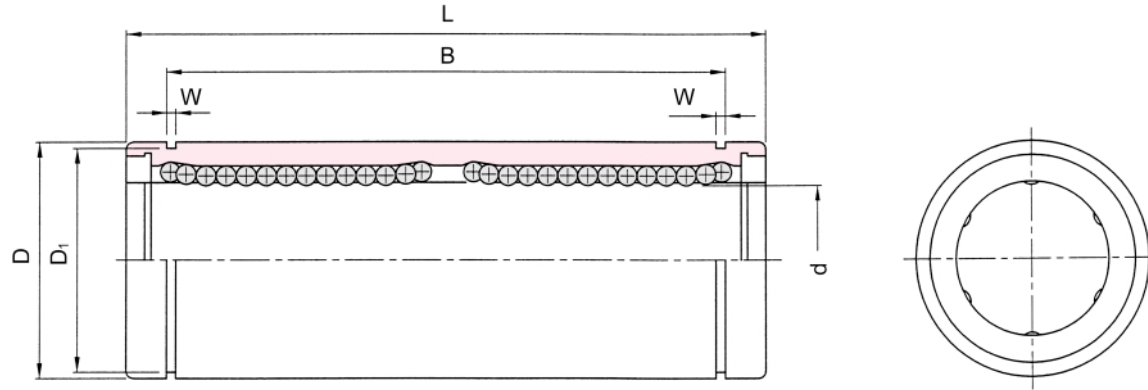
2. 1 Kg_f=9.81 N=2.2046 Lbf

3. The tolerances stated above are valid for the "Standard Closed Type".



Type

~Metric Dimension Series Used Most Frequently in Japan



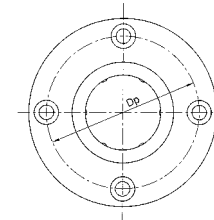
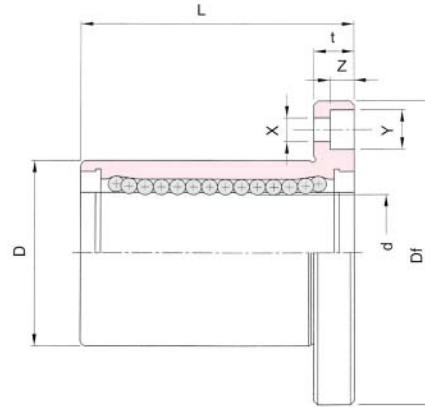
Shaft Diameter d mm	Model JBL Type	Major Dimensions and Tolerance										Load Capacity	
		mm	Tolerance μ m	mm	Tolerance μ m	mm	Tolerance μ m	mm	Tolerance μ m	mm	mm	mm	Basic Dynamic Load Rating C(N)
8	JBL-08A	8		15	0 -11	45		35		1.1	14.3	441	804
10	JBL-10A	10	0	19		55	0	44	0	1.3	18	608	1127
12	JBL-12A	12	-9	21	-13	57	-200	46	-200	1.3	20	823	1588
16	JBL-16A	16		28		70		53		1.6	27	1245	2352
20	JBL-20A	20		32		80		61		1.6	30.5	1401	2764
25	JBL-25A	25	0	40	0	112		82		1.85	38	1558	3136
30	JBL-30A	30	-10	45	-16	123		89		1.85	43	2450	5488
35	JBL-35A	35	0	52	0	135	-300	99	-300	2.1	49	2646	6272
40	JBL-40A	40	-12	60	-19	151		121		2.1	57	3479	8232

Note: 1. Linear bearing with single side wiper (JBL.....W) or with double side wiper (JBL.....WW) are available.
2. 1 Kgf=9.81 N=2.2046 Lbf

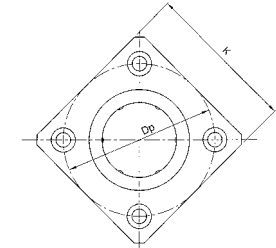


JBF & JBK Type

~ Metric Dimension Series Used Most Frequently in Japan



JBF TYPE



JBK TYPE

Shaft Diameter d mm	Model		Major Dimensions and Tolerance														Load Capacity		
	JBF Type	JBK Type	d mm	Tolerance μ m	D mm	Tolerance μ m	L mm	Tolerance μ m	Df mm	K mm	t mm	Dp mm	X mm	Y mm	Z mm	Concentricity μ m	Perpendicularity μ m	Basic Dynamic Load Rating C(N)	Basic Static Load Rating C0(N)
8	JBF - 08A	JBK - 08A	8	0 -9	15	0 -11	24	±300	32	25	5	24	3.5	6	3.1	12	12	274	392
10	JBF - 10A	JBK - 10A	10		19	0	29	±300	40	30	6	29	4.5	7.5	4.1			372	549
12	JBF - 12A	JBK - 12A	12		21	0	30	0	42	32	6	32	4.5	7.5	4.1			412	598
16	JBF - 16A	JBK - 16A	16		28	-13	37	-200	48	37	6	38	4.5	7.5	4.1			782	1176
20	JBF - 20A	JBK - 20A	20	0 -10	32	0 -16	42	0 -300	54	42	8	43	5.5	9	5.1	15	15	882	1382
25	JBF - 25A	JBK - 25A	25		40		59		62	50	8	51	5.5	9	5.1			980	1568
30	JBF - 30A	JBK - 30A	30		45		64		74	58	10	60	6.6	11	6.1			1568	2744
35	JBF - 35A	JBK - 35A	35		52		70		82	64	10	67	6.6	11	6.1			1666	3136
40	JBF - 40A	JBK - 40A	40	-12	60	-19	80		96	75	13	78	9	14	8.1	20	20	2156	4018

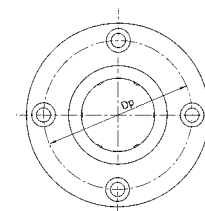
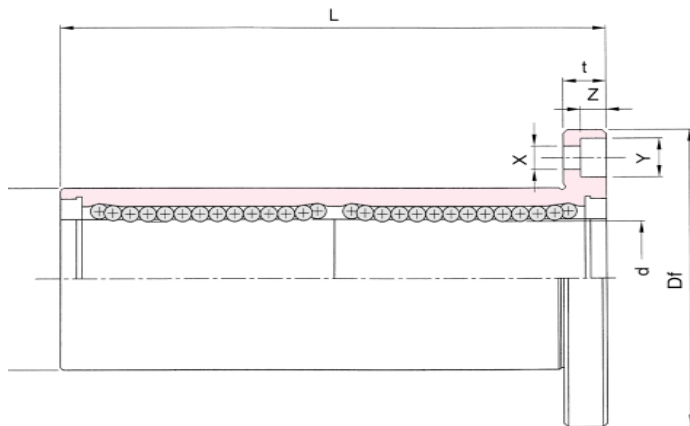
Note: 1. Linear bearing with single side wiper (JBF/JBK.....W) or with double side wiper (JBF/JBK.....WW) are available.

2. 1 Kgf=9.81 N=2.2046 Lbf

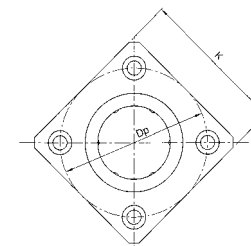


JBFL & JBKL Type

~ Metric Dimension Series Used Most Frequently in Japan



JBFL TYPE



JBKL TYPE

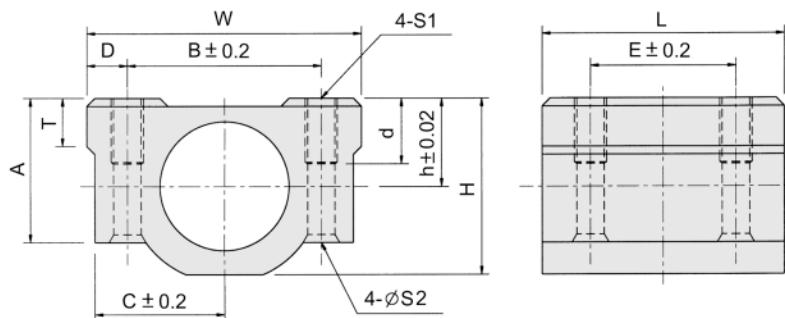
Shaft Diameter d mm	Model		Major Dimensions and Tolerance														Load Capacity			
	JBFL Type	JBKL Type	d mm	Tolerance μ m	D mm	Tolerance μ m	L mm	Tolerance μ m	Df mm	K mm	t mm	Dp mm	X mm	Y mm	Z mm	Concentricity μ m	Perpendicularity μ m	Basic Dynamic Load Rating C(N)	Basic Dynamic Load Rating Co(N)	
8	JBFL - 08A	JBKL - 08A	8	0 -9	15	0 -11	45	±300	32	25	5	24	3.5	6	3.1	12	12	441	804	
10	JBFL - 10A	JBKL - 10A	10		19	0	55		40	30	6	29	4.5	7.5	4.1			608	1127	
12	JBFL - 12A	JBKL - 12A	12		21	0 -13	57	0	42	32	6	32	4.5	7.5	4.1			823	1588	
16	JBFL - 16A	JBKL - 16A	16		28	-200	70	-200	48	37	6	38	4.5	7.5	4.1			1245	2352	
20	JBFL - 20A	JBKL - 20A	20	0 -10	32	0 -16	80	0 -300	54	42	8	43	5.5	9	5.1	15	15	1401	2764	
25	JBFL - 25A	JBKL - 25A	25		40		0		112	62	50	8	51	5.5	9			5.1	1558	3136
30	JBFL - 30A	JBKL - 30A	30		45		-300		123	74	58	10	60	6.6	11			6.1	2450	5488
35	JBFL - 35A	JBKL - 35A	35		52		0		135	82	64	10	67	6.6	11			6.1	2646	6272
40	JBFL - 40A	JBKL - 40A	40	0 -12	60	0 -19	151	96	75	13	78	9	14	8.1	20	20	3479	8232		

Note: 1. Linear bearing with single side wiper (JBFL/JBKL.....W) or with double side wiper (JBFL/JBKL.....WW) are available.

2. 1 Kg_f=9.81 N=2.2046 Lbf



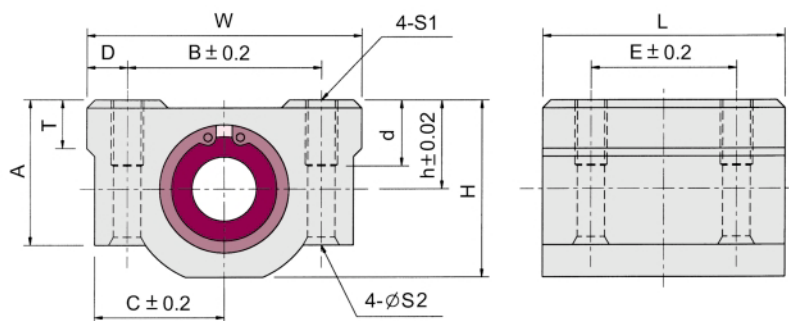
HOUSING JBH Series



Shaft Diameter d mm	Model	Major Dimensions							Mounting Dimension						Load Capacity		
		h mm	A mm	C mm	H mm	L mm	T mm	W mm	B mm	E mm	D mm	S1	S2 mm	d mm	Combination Linear Bearing	Basic Dynamic Load Rating C(N)	Basic Static Load Rating Co(N)
8	JBH-8A	11	18	17	22	30	6	34	24	18	5	M4	3.4	8	JB-08AWW	274	392
12	JBH-12A	15	24	21	28	36	8	42	30.5	26	5.75	M5	4.3	12	JB-12AWW	412	598
															JBM-12AWW	500	1049
16	JBH-16A	19	32.5	25	38	44	9	50	36	34	7	M5	4.3	12	JB-16AWW	782	1176
															JBM-16AWW	941	2068
20	JBH-20A	21	35	27	41	50	11	54	40	40	7	M6	5.2	12	JB-20AWW	882	1382
															JBM-20AWW	1049	2421
25	JBH-25A	26	42	38	51	67	12	76	54	50	11	M8	7	18	JB-25AWW	980	1568
															JBM-25AWW	1176	2754
30	JBH-30A	30	49	39	59	72	15	78	58	58	10	M8	7	18	JB-30AWW	1568	2744
															JBM-30AWW	1882	4822



BEARING SET JBA Series



Shaft Diameter d mm	Model	Major Dimensions						Mounting Dimension						Load Capacity			
		h mm	A mm	C mm	H mm	L mm	T mm	W mm	B mm	E mm	D mm	S1	S2 mm	d mm	Combination Linear Bearing	Basic Dynamic Load Rating C(N)	Basic Static Load Rating Co(N)
8	JBA-8A	11	18	17	22	30	6	34	24	18	5	M4	3.4	8	JB-08A	274	392
12	JBA-12A	15	24	21	28	36	8	42	30.5	26	5.75	M5	4.3	12	JB-12A	412	598
	JBA-12A-M														JBM-12A	500	1049
16	JBA-16A	19	32.5	25	38	44	9	50	36	34	7	M5	4.3	12	JB-16A	782	1176
	JBA-16A-M														JBM-16A	941	2068
20	JBA-20A	21	35	27	41	50	11	54	40	40	7	M6	5.2	12	JB-20A	882	1382
	JBA-20A-M														JBM-20A	1049	2421
25	JBA-25A	26	42	38	51	67	12	76	54	50	11	M8	7	18	JB-25A	980	1568
	JBA-25A-M														JBM-25A	1176	2754
30	JBA-30A	30	49	39	59	72	15	78	58	58	10	M8	7	18	JB-30A	1568	2744
	JBA-30A-M														JBM-30A	1882	4822

Note: 1. Linear bearing with single side wiper (JBA...W "-M") or with double side wiper (JBA...WW "-M") are available.

2. 1kgf=9.81 N