

## Special Double Row Ball Bearings for Textile Machines and Measuring Instruments



### Special Double Row Ball Bearings for Textile Machines and Measuring Instruments

Special double-row bearing for textile machines and measurement instruments built not separable unit, which consists of cylindrical bushing and shaft, arranged in two rows of balls. The balls are led in light one-sided cages. The raceways on the shaft and in the cylindrical bushing are made in high accuracy degree. Effective contact or non-contact seals on both sides of bearings prevent penetration of impurities. The bearings are filled with a grease of a high quality providing constant lubrication during their whole life. In some cases the design of the bushings makes possible relubrication during a bearings life.

A special double-row bearing creates a complete bearing unit which enables simple assembly and maintenance. The development of these bearings hangs together with a solution of arrangements of the most important parts in the textile machines but also for measuring instruments.

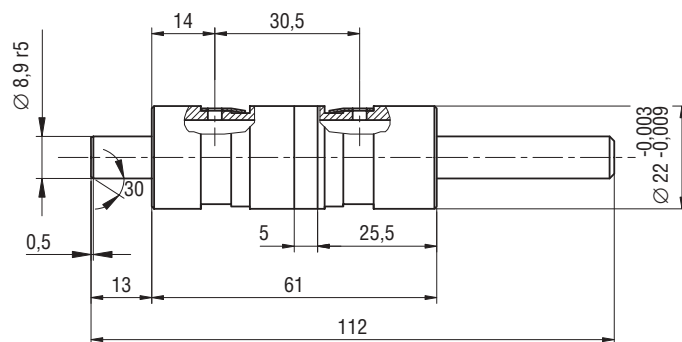
Special double-row ball bearings for textile machines are designed for high rotational speed and relatively light load. They are known for their high dimensional accuracy and smooth run warranting their high effectiveness. KINEX, a. s., Bytča, produces and supplies these bearings according to demand of the users complemented with some other components, e. g. pulleys drive discs and elastic bearings. In some cases there are complete integrated bearing units which make from the technological and economical point of view possible the more effective production of textile machines.

Special double-row ball bearings for textile machines produced by KINEX, a. s., Bytča, are used in shaping machines such as spindles of torsional units, in non-spindle spinning machines by housing a bearing of spinning chamber, of a card strips disk etc.

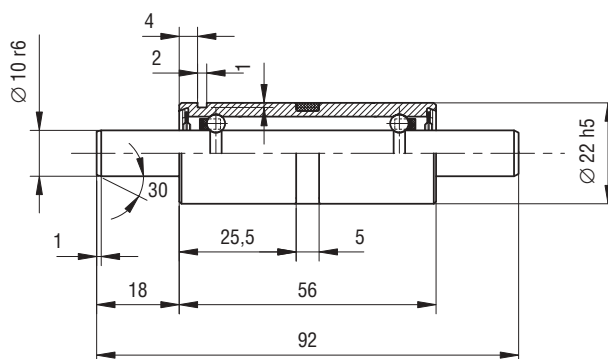
Special double-row ball bearings for measuring instruments are known for their high dimensional accuracy as well as for operational reliability, but they are working at lower rotational speeds as the bearings in textile machines. They are used e. g. for arrangements of measuring disc in incremental daffers.

**Identification symbol of the producer: E**

## Special Double Row Ball Bearings for Textile Machines and Measuring Instruments



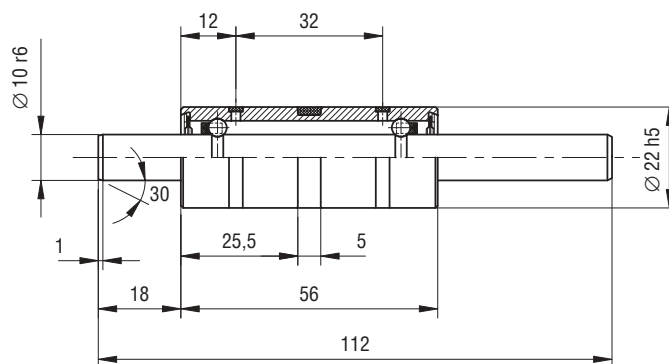
PLC 72-6



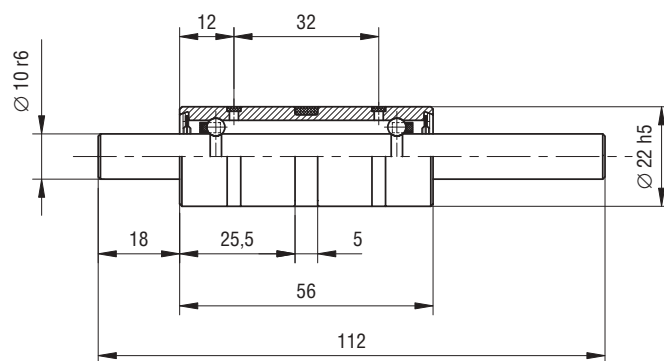
PLC 73-1-13

Bearing designation	Basic load ratings		Limiting speed n
	dynamic $C_r$	static $C_0$	
	kN		min <sup>-1</sup>
PLC 72-6	1,88	0,55	95 000
PLC 73-1-13	2,00	0,69	40 000

## Special Double Row Ball Bearings for Textile Machines and Measuring Instruments



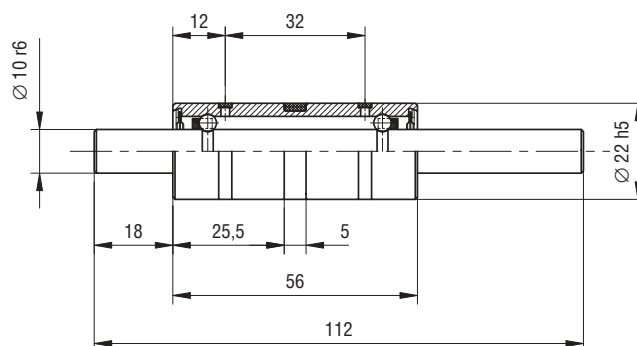
PLC 73-1-14



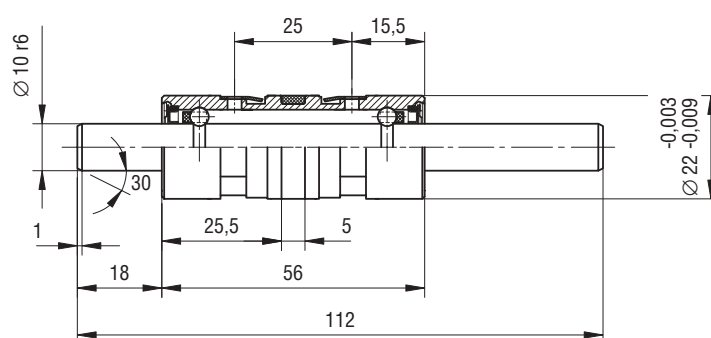
PLC 73-1-20

Bearing designation	Basic load ratings		Limiting speed n
	dynamic $C_r$	static $C_0$	
	kN		min <sup>-1</sup>
PLC 73-1-14	2,33	0,69	60 000
PLC 73-1-20	2,33	0,69	40 000

## Special Double Row Ball Bearings for Textile Machines and Measuring Instruments



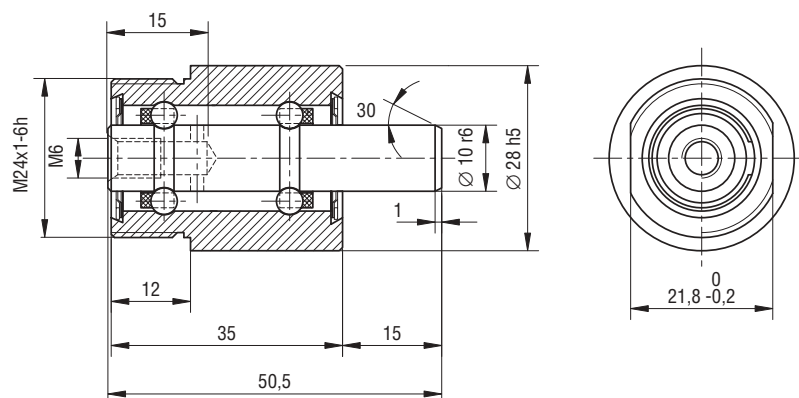
PLC 73-1-22



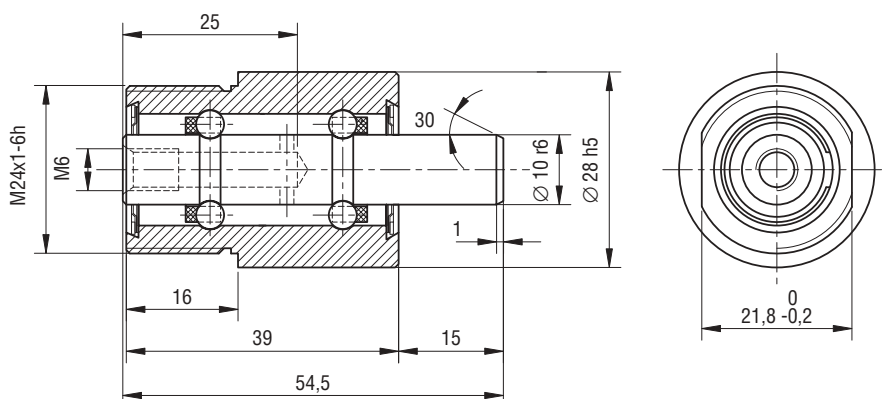
PLC 73-1-24

Bearing designation	Basic load ratings		Limiting speed n
	dynamic $C_r$	static $C_0$	
	kN		min <sup>-1</sup>
PLC 73-1-22	2,33	0,69	60 000
PLC 73-1-24	2,33	0,69	75 000

## Special Double Row Ball Bearings for Textile Machines and Measuring Instruments



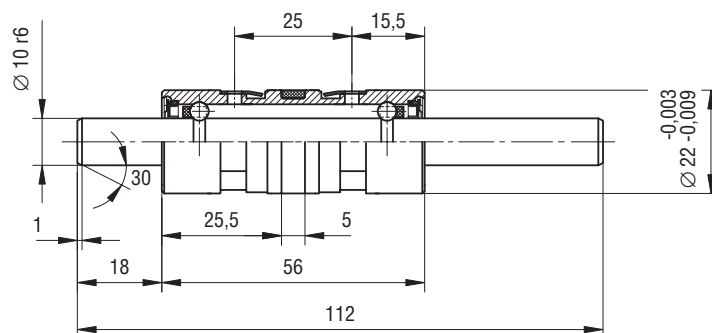
PLC 73-1-28



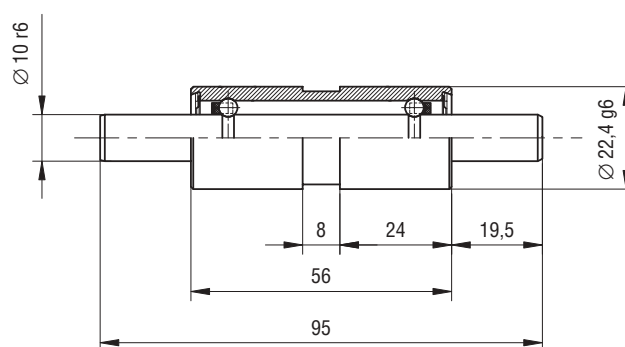
PLC 73-1-49

Bearing designation	Basic load ratings		Limiting speed n
	dynamic $C_r$	static $C_o$	
	kN		min <sup>-1</sup>
PLC 73-1-28	1,96	0,69	15 000
PLC 73-1-49	2,00	0,69	15 000

## Special Double Row Ball Bearings for Textile Machines and Measuring Instruments



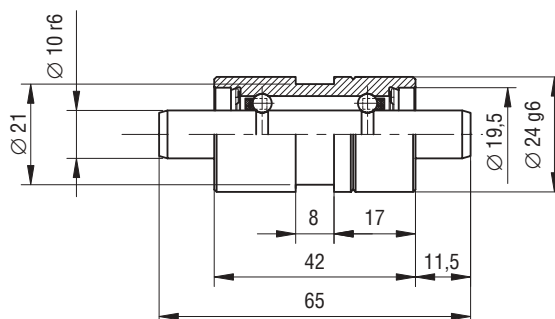
PLC 73-1-31



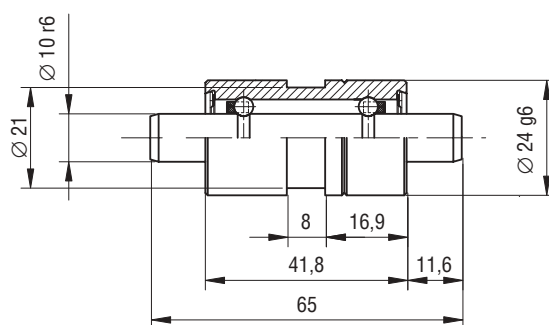
PLC 73-1-36

Bearing designation	Basic load ratings		Limiting speed n
	dynamic $C_r$	static $C_0$	
	kN		min <sup>-1</sup>
PLC 73-1-31	2,33	0,69	80 000
PLC 73-1-36	1,96	0,69	15 000

## Special Double Row Ball Bearings for Textile Machines and Measuring Instruments



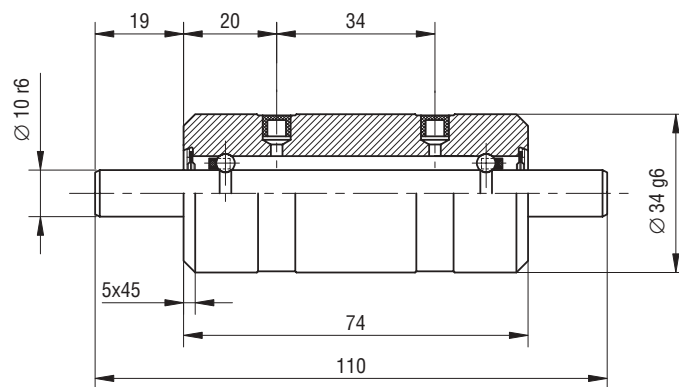
PLC 73-1-40



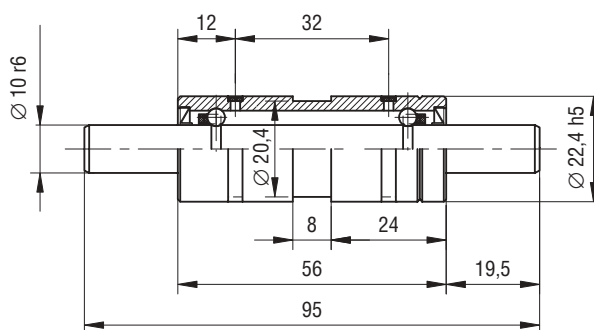
PLC 73-1-43

Bearing designation	Basic load ratings		Limiting speed n
	dynamic $C_r$	static $C_0$	
	kN		min <sup>-1</sup>
PLC 73-1-40	2,00	0,69	15 000
PLC 73-1-43	1,96	0,69	15 000

## Special Double Row Ball Bearings for Textile Machines and Measuring Instruments



PLC 73-1-35

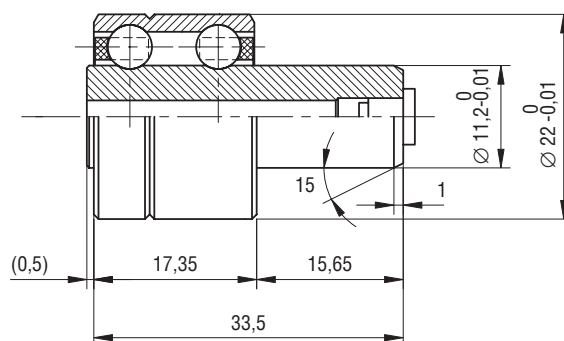


PLC 73-1-94

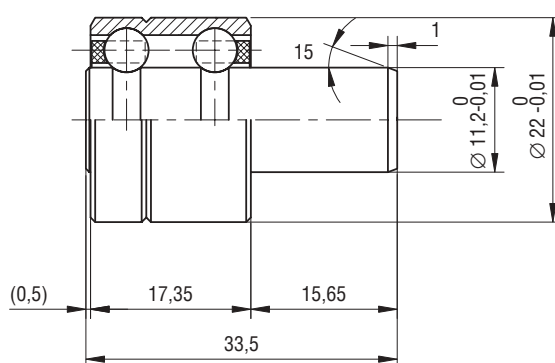
Bearing designation	Basic load ratings		Limiting speed n
	dynamic $C_r$	static $C_0$	
	kN		min <sup>-1</sup>
PLC 73-1-35	2,33	0,69	15 000
PLC 73-1-94	2,00	0,69	22 000



## Special Double Row Ball Bearings for Textile Machines and Measuring Instruments



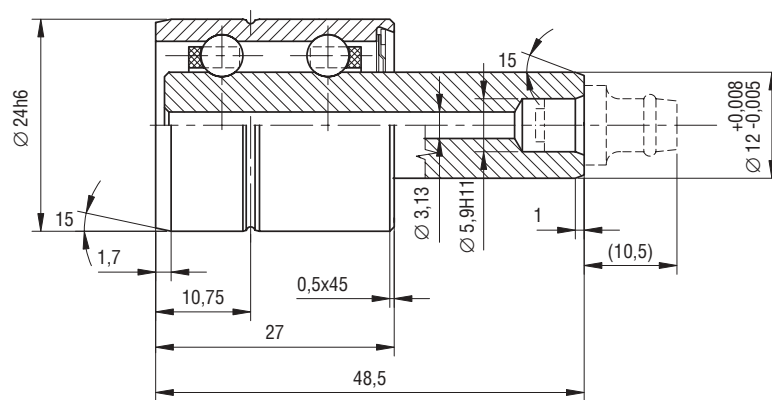
PLC 73-7-3



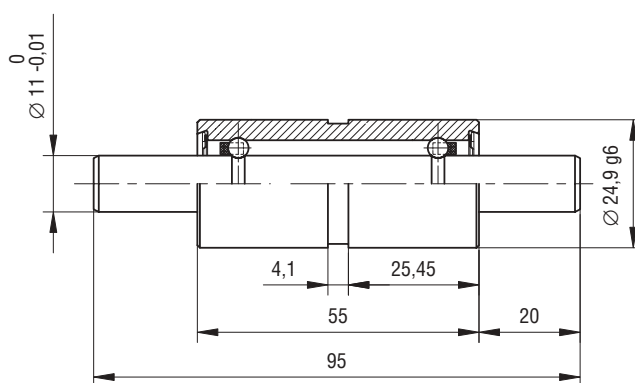
PLC 73-7-4

Bearing designation	Basic load ratings		Limiting speed n
	dynamic $C_r$	static $C_0$	
	kN		min <sup>-1</sup>
PLC 73-7-3	3,62	1,55	20 000
PLC 73-7-4	3,62	1,55	8 000

## Special Double Row Ball Bearings for Textile Machines and Measuring Instruments



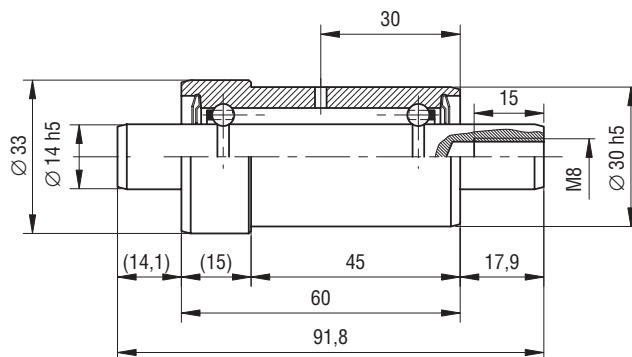
PLC 73-7-5



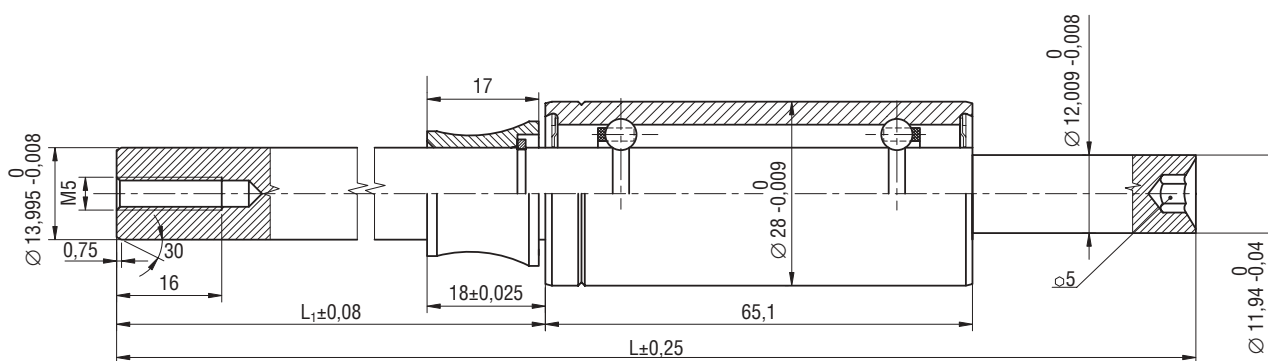
PLC 73-7

Bearing designation	Basic load ratings		Limiting speed n
	dynamic $C_r$	static $C_0$	
	kN		min <sup>-1</sup>
PLC 73-7-5	3,62	1,52	7 500
PLC 73-7	2,37	0,72	22 000

## Special Double Row Ball Bearings for Textile Machines and Measuring Instruments



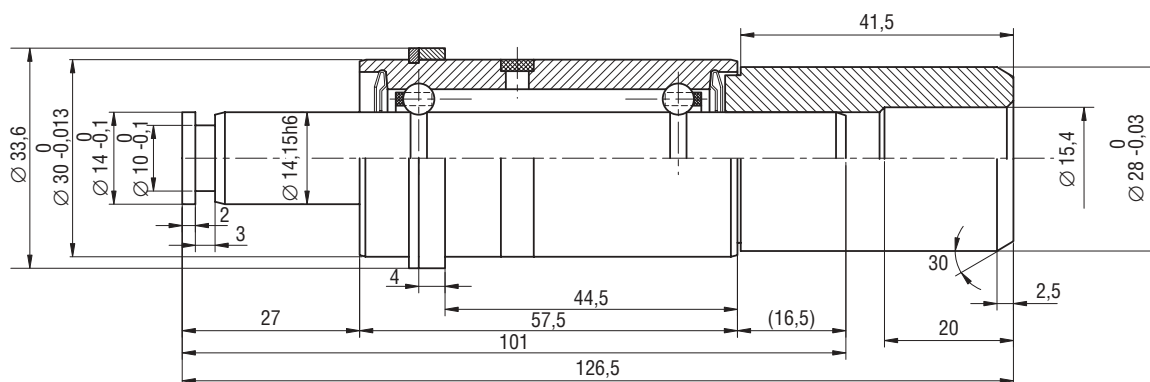
PLC 74-10



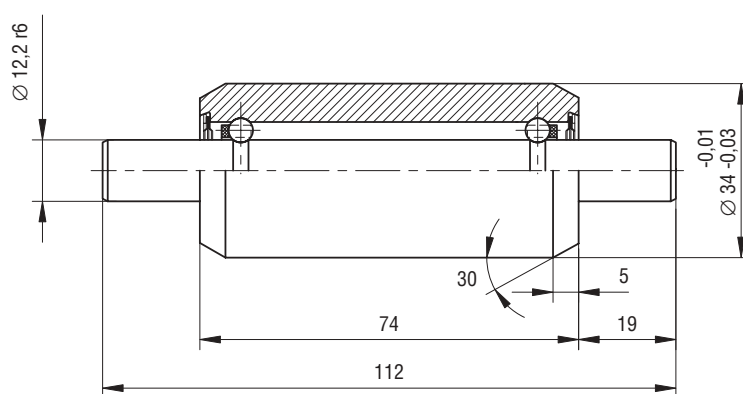
PLC 74-10-1/typ

Bearing designation	Basic load ratings		Limiting speed otáčania n	Dimensions	
	dynamic $C_r$	static $C_0$		L	$L_1$
	kN		$\text{min}^{-1}$	mm	
PLC 74-10	4,47	2,18	22 000		
PLC 74-10-1/76	4,47	2,18	22 000	228	100
PLC 74-10-1/77	4,47	2,18	22 000	199	100
PLC 74-10-1/78	4,47	2,18	22 000	206	78
PLC 74-10-1/79	4,47	2,18	22 000	177	78

## Special Double Row Ball Bearings for Textile Machines and Measuring Instruments



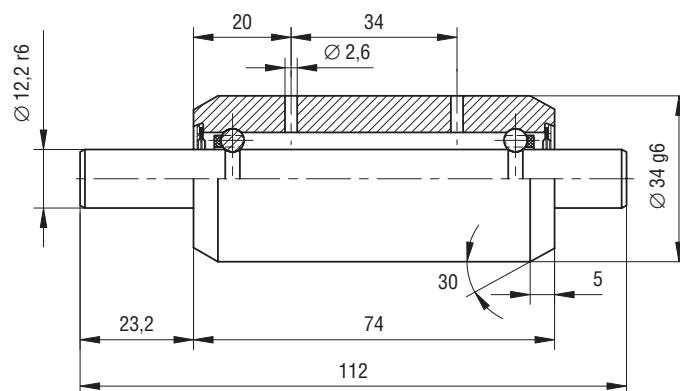
PLC 74-10-2



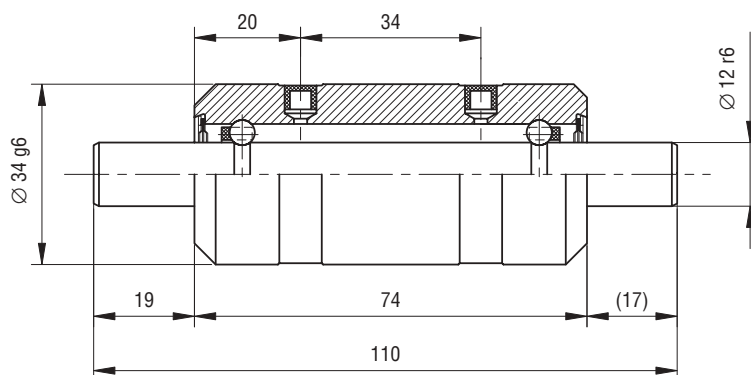
PLC 74-4

Bearing designation	Basic load ratings		Limiting speed n
	dynamic $C_r$	static $C_0$	
	kN		min <sup>-1</sup>
PLC 74-10-2	4,47	2,18	22 000
PLC 74-4	3,62	1,52	30 000

## Special Double Row Ball Bearings for Textile Machines and Measuring Instruments



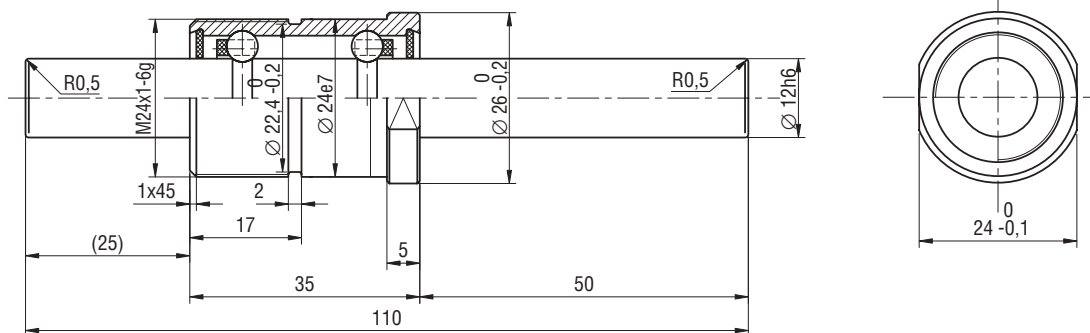
PLC 74-4-1



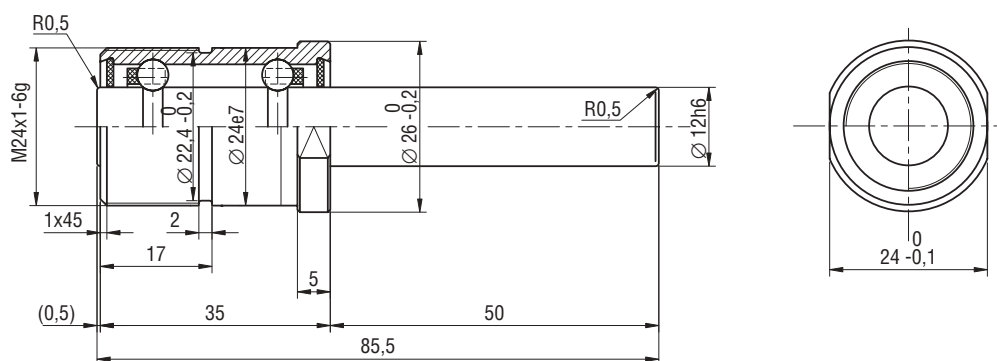
PLC 74-5-4

Bearing designation	Basic load ratings		Limiting speed n
	dynamic $C_r$	static $C_0$	
	kN		min <sup>-1</sup>
PLC 74-4-1	3,62	1,52	30 000
PLC 74-5-4	4,22	1,52	30 000

## Special Double Row Ball Bearings for Textile Machines and Measuring Instruments



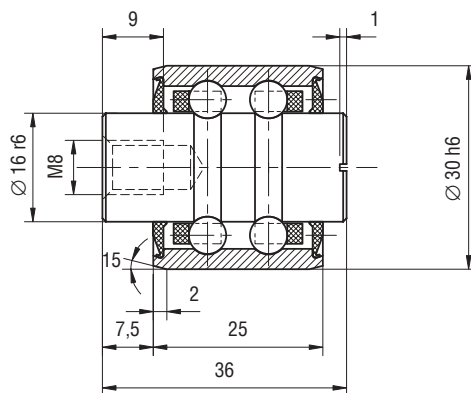
PLC 74-8-1



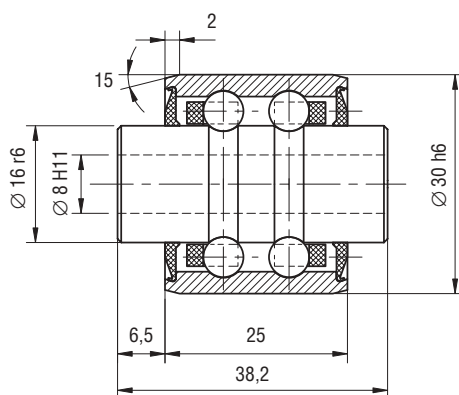
PLC 74-8-2

Bearing designation	Basic load ratings		Limiting speed n
	dynamic $C_r$	static $C_0$	
	kN		min <sup>-1</sup>
PLC 74-8-1	3,62	1,51	18 000
PLC 74-8-2	3,62	1,51	18 000

## Special Double Row Ball Bearings for Textile Machines and Measuring Instruments



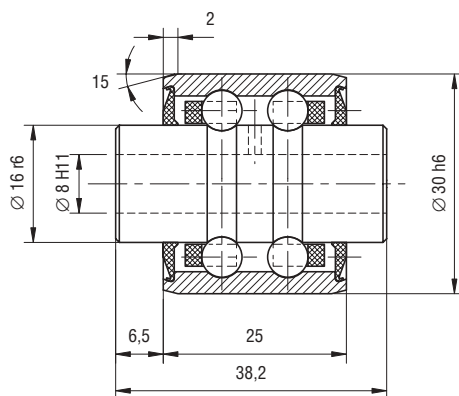
PLC 76-2-1



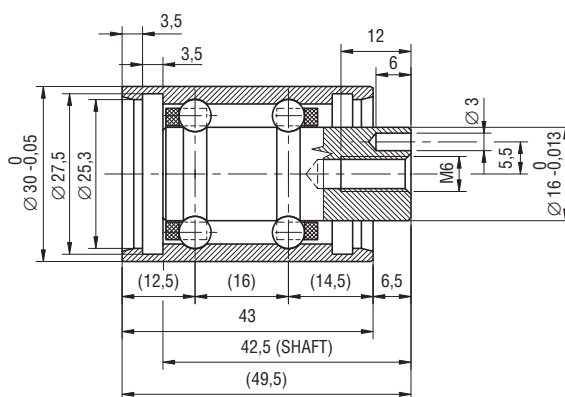
PLC 76-2-2

Bearing designation	Basic load ratings		Limiting speed n
	dynamic $C_r$	static $C_0$	
	kN		min <sup>-1</sup>
PLC 76-2-1	5,11	2,35	15 000
PLC 76-2-2	5,11	2,35	15 000

## Special Double Row Ball Bearings for Textile Machines and Measuring Instruments



PLC 76-2-3



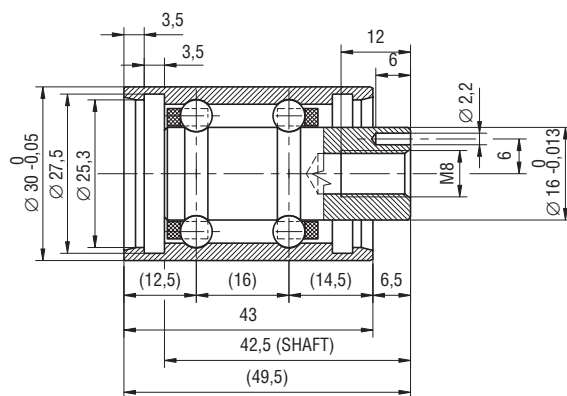
PLC 76-2-5

Bearing designation	Basic load ratings		Limiting speed n
	dynamic $C_r$	static $C_0$	
	kN		min <sup>-1</sup>
PLC 76-2-3 <sup>1)</sup>	5,11	2,35	15 000
PLC 76-2-5	5,11	2,35	15 000

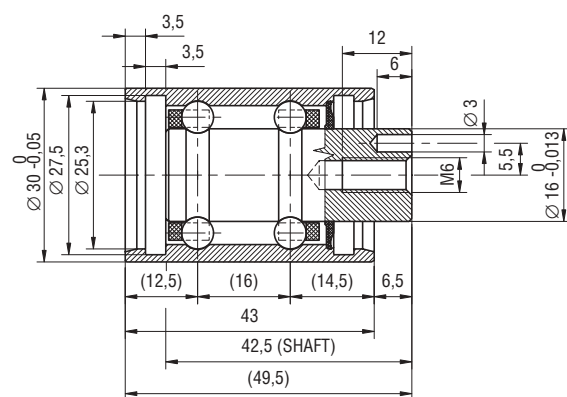
1) There is produced also in the specification PLC 76-2-3/KK with steel caps.



## Special Double Row Ball Bearings for Textile Machines and Measuring Instruments



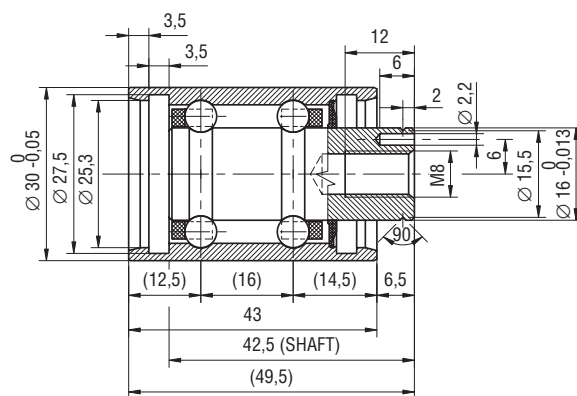
PLC 76-2-6



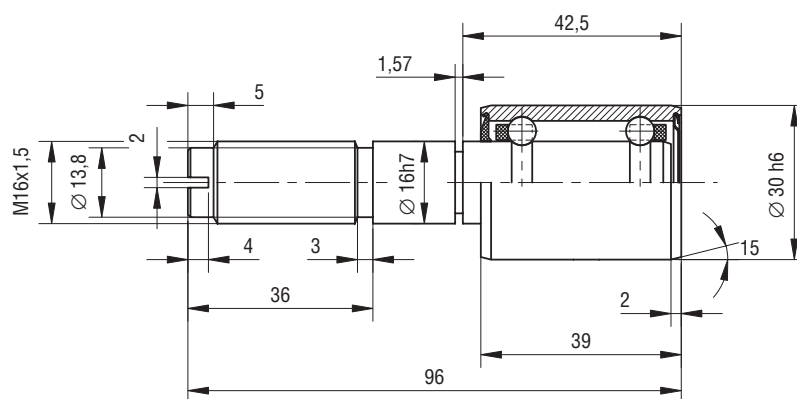
PLC 76-2-7

Bearing designation	Basic load ratings		Limiting speed n
	dynamic $C_r$	static $C_0$	
	kN		min <sup>-1</sup>
PLC 76-2-6	5,11	2,35	15 000
PLC 76-2-7	5,11	2,35	15 000

## Special Double Row Ball Bearings for Textile Machines and Measuring Instruments



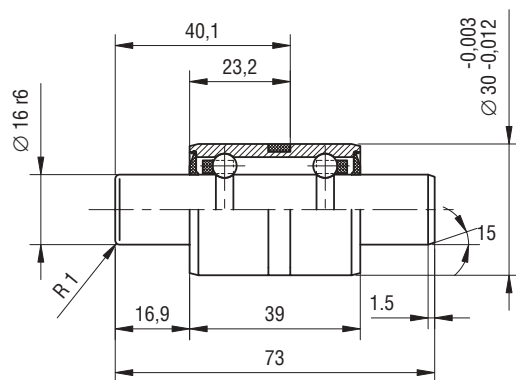
PLC 76-2-8



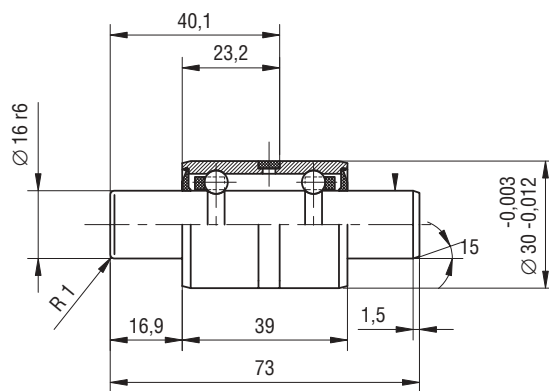
PLC 76-3-1

Bearing designation	Basic load ratings		Limiting speed n
	dynamic $C_r$	static $C_0$	
	kN		min <sup>-1</sup>
PLC 76-2-8	5,11	2,35	15 000
PLC 76-3-1	5,11	2,35	12 000

## Special Double Row Ball Bearings for Textile Machines and Measuring Instruments



PLC 76-3



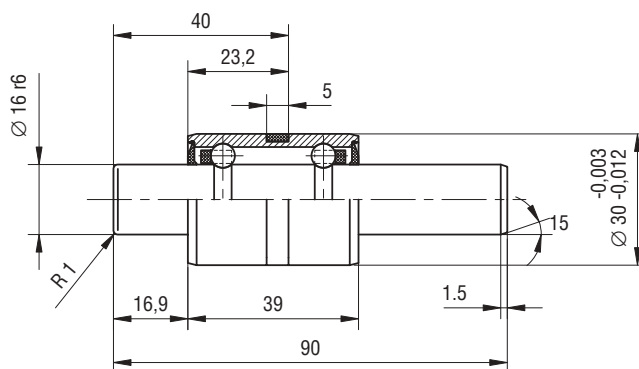
PLC 76-3-7

Bearing designation	Basic load ratings		Limiting speed n
	dynamic $C_r$	static $C_o$	
	kN		min <sup>-1</sup>
PLC 76-3 <sup>1)</sup>	5,11	2,35	10 000
PLC 76-3-7 <sup>2)</sup>	5,11	2,35	10 000

1) There is produced also in the specification PLC 76-3/KK with steel caps

2) There is produced also in the specification PLC 76-3-7/KK with steel caps

## Special Double Row Ball Bearings for Textile Machines and Measuring Instruments

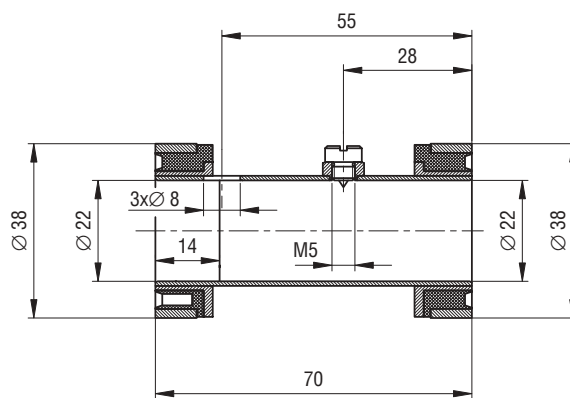


PLC 76-3-6

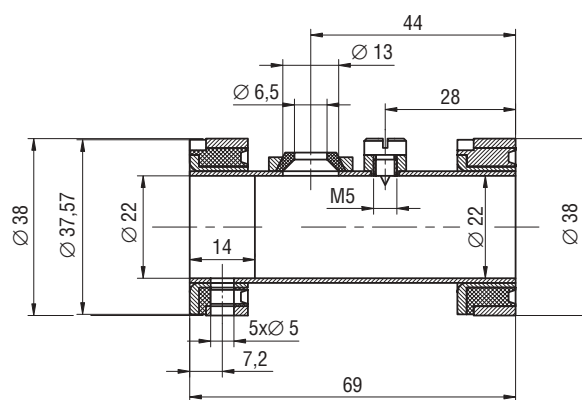
Bearing designation	Basic load ratings		Limiting speed n
	dynamic $C_r$	static $C_0$	
	kN		min <sup>-1</sup>
PLC 76-3-6	5,11	2,35	10 000

# Special Double Row Ball Bearings for Textile Machines and Measuring Instruments

## Elastic Arrangements



PLC 83-15

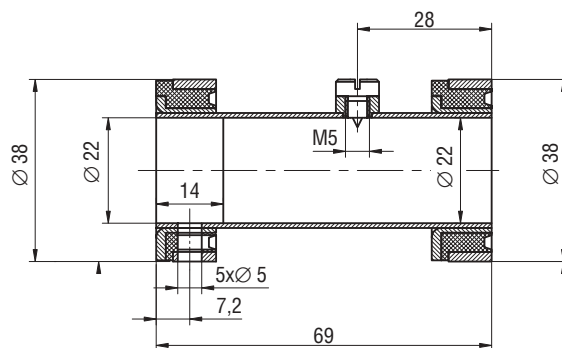


PLC 83-23-1

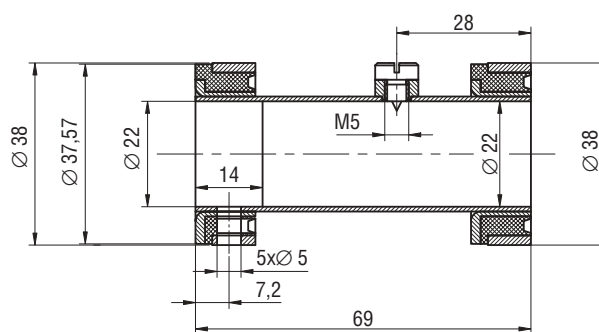
Designation of the elastic arrangement	Application for the bearings with the limiting speed	
	min <sup>-1</sup>	
PLC 83-15	80 000	
PLC 83-23-1	100 000	

# Special Double Row Ball Bearings for Textile Machines and Measuring Instruments

## Elastic Arrangements



PLC 83-18-2



PLC 83-18-4

Designation of the elastic arrangement	Application for the bearings with the limiting speed	
	min <sup>1</sup>	
PLC 83-18-2	105 000	
PLC 83-18-4	105 000	