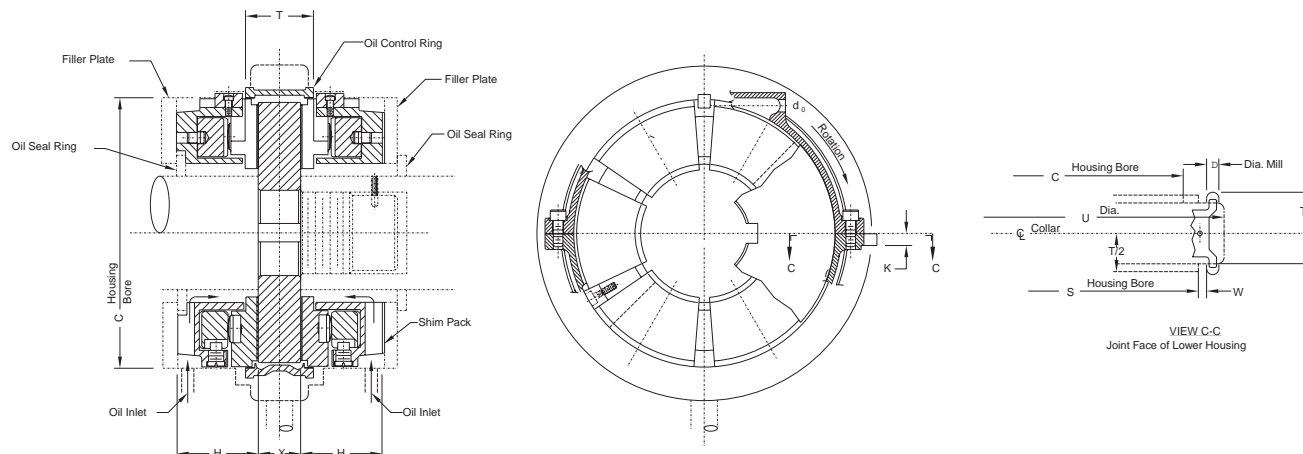


Oil Control Rings

The oil control ring controls the discharge of oil from the bearing.



Style J, B, and E Bearings—English Units (inches)

Bearing Size	4.0	5.0	6.0	7.0	8.0	9.0	10.5	12.0	13.5	15.0	17.0
Housing Bore "C"	4.375	5.375	6.375	7.375	8.375	9.375	11.000	12.500	14.000	15.500	17.625
Thrust Cavity "H"	1.44	1.75	2.06	2.38	2.69	3.00	3.38	3.75	4.25	4.62	5.25
Housing Bore "S"	4.875	5.875	6.875	7.875	9.000	10.000	11.625	13.250	14.875	16.500	18.750
T (Housing)	1.375	1.375	1.625	2.000	2.250	2.500	2.875	3.250	3.625	4.000	4.500
U	6.75	7.75	8.75	9.75	10.75	12.00	13.75	15.50	17.50	19.50	22.00
V	0.50	0.50	0.69	0.88	1.00	1.06	1.25	1.44	1.69	1.75	2.00
Collar Thickness "X"	0.88	0.88	1.00	1.25	1.38	1.50	1.75	2.00	2.25	2.50	2.88
Oil Outlet Diameter d_o	0.22	0.22	0.44	0.50	0.66	0.81	1.06	1.19	1.31	1.38	1.38
TT	0.88	0.88	1.06	1.25	1.38	1.50	1.69	1.88	2.25	2.38	2.62
W	0.31	0.31	0.25	0.25	0.25	0.28	0.34	0.34	0.38	0.38	0.41
Diameter Mill "D"	0.50	0.50	0.56	0.50	0.50	0.50	0.50	0.50	0.62	0.75	0.62
Depth of Milled Slots "K"	0.25	0.25	0.31	0.38	0.38	0.38	0.50	0.50	0.50	0.56	0.62

Style J, B, and E Bearings—Metric Conversions (mm)

Bearing Size	101.6	127.0	152.4	177.8	203.2	228.6	266.7	304.8	342.9	381.0	431.8
Housing Bore "C"	111.12	136.52	161.92	187.32	212.72	238.12	279.40	317.50	355.60	393.60	447.68
Thrust Cavity "H"	36.6	44.5	52.3	60.5	68.3	76.2	85.9	95.3	108.0	117.4	133.4
Housing Bore "S"	123.83	149.23	174.63	200.03	228.60	254.00	295.28	336.55	377.83	419.10	476.25
T (Housing)	34.93	34.93	41.28	50.80	57.15	63.50	73.03	82.55	92.08	101.60	114.30
U	171.5	196.9	222.3	247.7	273.1	304.8	349.3	393.7	444.5	495.3	558.8
V	12.7	12.7	17.5	22.4	25.4	26.9	31.8	36.6	42.9	44.5	50.8
Collar Thickness "X"	22.4	22.4	25.4	31.8	35.1	38.1	44.5	50.8	57.2	63.5	73.2
Oil Outlet Diameter d_o	5.6	5.6	11.2	12.7	16.8	20.6	26.9	30.2	33.3	35.1	35.1
TT	22.4	22.4	26.9	31.8	35.1	38.1	42.9	47.8	57.2	60.5	66.5
W	7.9	7.9	6.4	6.4	6.4	7.1	8.6	8.6	9.7	9.7	10.4
Diameter Mill "D"	12.7	12.7	14.2	12.7	12.7	12.7	12.7	12.7	15.7	19.1	15.8
Depth of Milled Slots "K"	6.4	6.4	7.9	9.7	9.7	9.7	12.7	12.7	12.7	14.2	15.8