

Link-Belt® Bearings

**Link-
Belt®**

**Max
Mount™**

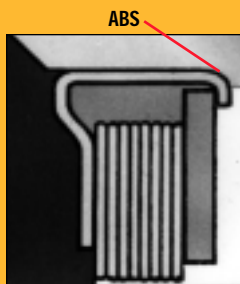
B22600 Series
Spherical Roller
Bearing Units



New Link-Belt® Max Mount™ Spherical Roller Bearing

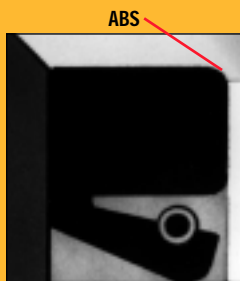
Seal Variety

Housing design includes Anti-Blowout Shoulder (ABS) to retain seal and allow grease to purge during lubrication.



H - Multiple Disc Labyrinth

Floating Labyrinth seal has multiple self-aligning steel rings held securely in a steel carrier. Standard, all-purpose seal.



E - Spring-Loaded Lip

Spring-loaded lip seal provides uniform pressure for effective seal contact on the bearing inner ring. Normally used for liquid splash environments.

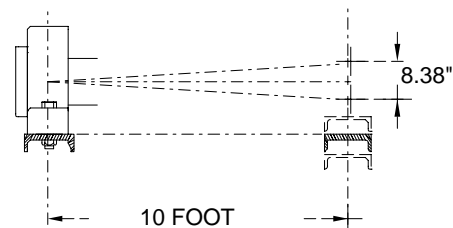
Standard Link-Belt® Roller Bearing features include

Spherical roller bearing

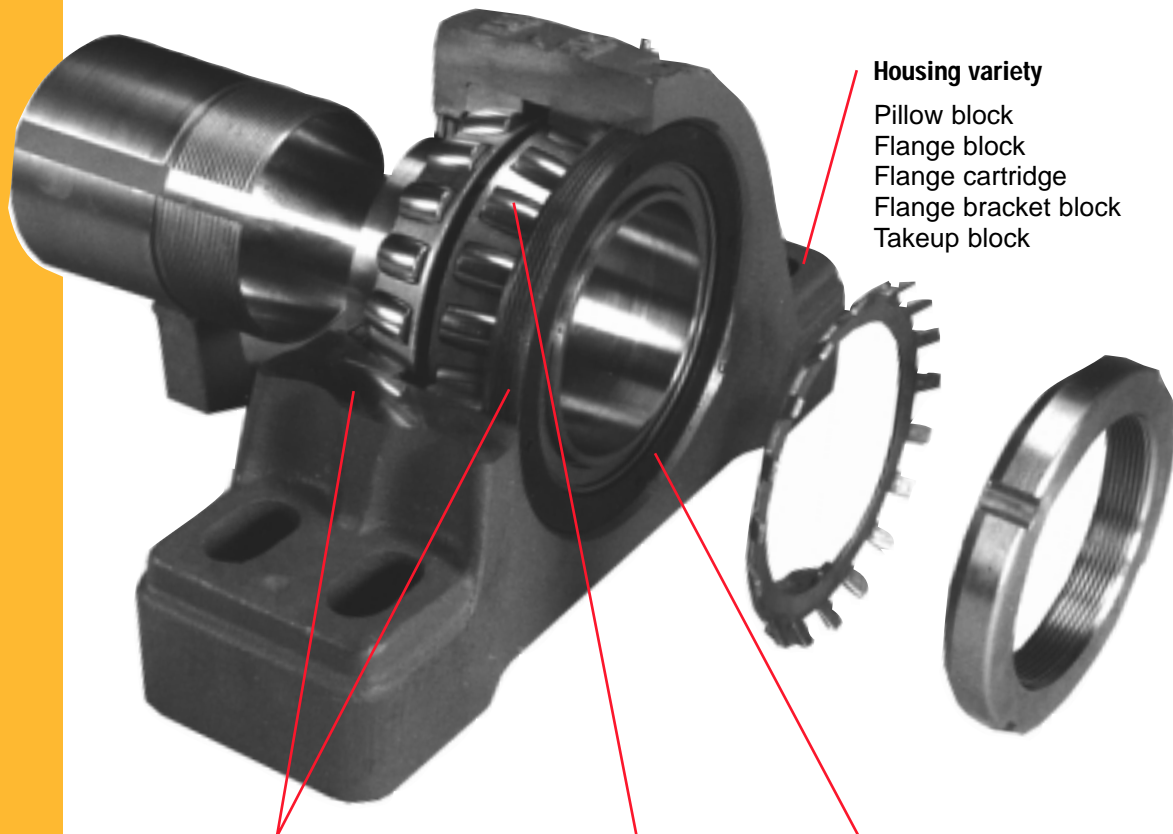
The unique large roller design distributes the load over symmetrical rollers, assuring positive tracking and smooth operation – a feature necessary for dynamic misalignment and for high radial or combined radial-thrust loads applications without sacrificing bearing life.

±2° Dynamic misalignment

Self-aligning, double row, spherical roller bearings allow for high misalignment during operation, providing extended bearing life. On 10-foot bearing centers, alignment variation between shaft and supporting structure can be as much as ±4.19" or 8.38" total.



B22600 Series



Housing variety

- Pillow block
- Flange block
- Flange cartridge
- Flange bracket block
- Takeup block

Heavy-duty shoulder and threaded cover

The shoulder provides a heavy duty thrust surface and the threaded cover provides excellent bearing retention on the opposite side of the housing.

Double contoured retainer pockets

Assure accurate roller guidance and positive roller control.

Adjustable clearance

Quick, accurate and flexible control of internal bearing clearance is a unique feature for adjustments required in the field.

Max Mount™ B22600 Series

extra features

Improved mounting design*

The B22600 adapter mounting provides better concentricity and shaft control, increasing service life. Where Turned, Ground and Polished shafting is the norm on collar-mounted units, the maximized mounting power of the B22600 allows for Commercial Grade Shafting compatibility (a commonly used grade of shafting due to its price and availability).

Extended shaft life

Shaft damage from set screws is eliminated with the B22600's improved mounting design. Shaft damage from the bearing inner ring fretting to the shaft (the result of a clearance or loose fit) is also eliminated. These improvements facilitate easier bearing removal, replacement bearing installation and longer shaft service life.

Upgrade made easy

Select the Max Mount™ for extended service life, more uptime and improved efficiency.

Position on shaft – Slide the bearing and sleeve on the shaft into position. Position the bearing by hand until it is tight on the adapter and the adapter is tight on the shaft.

Tighten bearing – Tighten the lock nut with a hook type spanner wrench until snug. Continue to tighten the locknut to the amount recommended in the installation instructions.

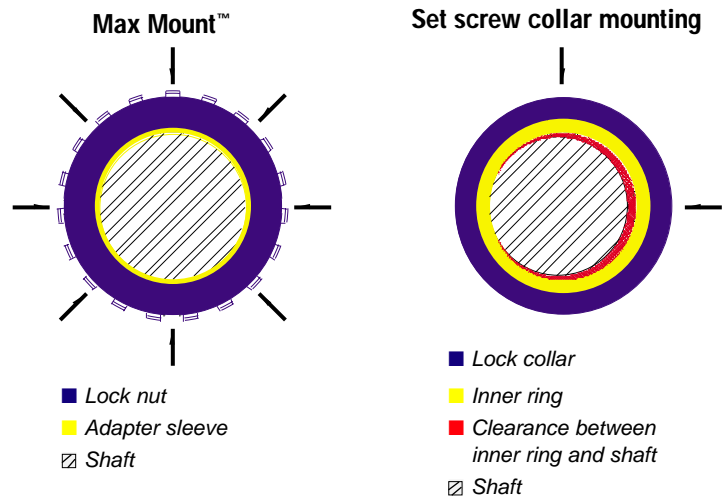
Secure locknut – Bend a tang of the lockwasher down into one of the locknut slots.

Bolt down the housing to the recommended torque value.

It's that easy.

* Patent applied for.

Always refer to installation instructions enclosed with the unit when installing.



Dimensional interchange

The Max Mount™ bearing insert fits in the same housing as Link-Belt® collar-mounted roller bearing units providing a simple, cost-effective option for upgrading existing bearing applications.

Shaft tolerance comparison

Shaft diameters for **Max Mount™** bearings should be held to the following regular commercial tolerances:

Shaft Diameters	Recommended Tolerance
1 $\frac{3}{16}$ " through 2"	Nominal to $-.003$ "
2 $\frac{1}{16}$ " through 4"	Nominal to $-.004$ "
4 $\frac{1}{16}$ " through 5"	Nominal to $-.005$ "

Shaft diameters for Set Screw Collar-Mounted roller bearings should be held to the following tolerances:

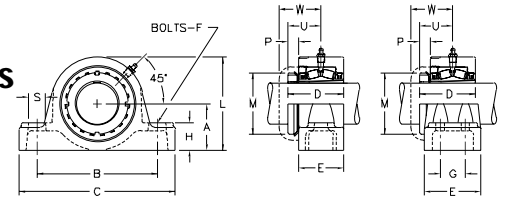
Shaft Diameters	Recommended Tolerance
1 $\frac{3}{16}$ " through 2"	Nominal to $-.0005$ "
2 $\frac{1}{16}$ " through 5"	Nominal to $-.0010$ "

The concentric mounting style of the **Max Mount™** accounts for the difference in shafting tolerances.

Link-Belt® Max Mount™

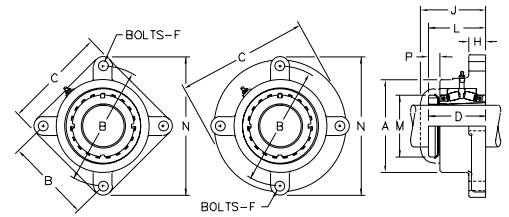
Dimensionally interchanges with collar-mounted units

Pillow Block Dimensions (inches)



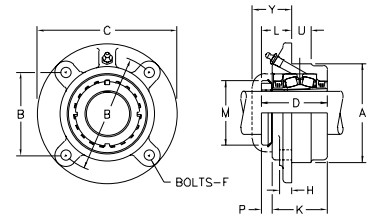
Shaft Dia.	Unit Number	A	B	C	D	E	F	G	H	L	M	P	S	U	W
					◆		Bolts					◆		◆	▲
1 7/16	P-B22623H	1 7/8	5	6 7/8	2.708	2 1/4	1/2	—	1 3/16	3 11/16	2 1/4	9/16	1 3/16	1 43/64	2 3/16
1 15/16	P-B22631H	2 1/4	6 1/4	8 3/8	3.075	2 1/2	5/8	—	1 5/8	4 9/16	2 31/64	43/64	1 5/16	1 55/64	2 9/32
2 3/16	P-B22635H	2 1/2	6 3/4	8 7/8	3.159	2 9/16	5/8	—	1 5/8	5	3 5/32	2 1/32	1 5/16	1 29/32	2 7/16
2 7/16	P-B22639H	2 3/4	7 1/8	9 1/4	3.362	2 11/16	5/8	—	1 5/8	5 1/2	3 5/8	43/64	1 5/16	2 3/64	2 9/16
2 11/16	P-B22643H	3 1/4	8 1/8	10 7/16	3.863	3 3/16	3/4	—	2	6 7/16	4 5/32	3/4	1 1/16	2 19/64	2 25/32
2 15/16	P-B22647H														
3 7/16	P-B22655H	3 3/4	10	13	4.306	3 7/16	7/8	—	2 1/4	7 1/2	4 15/16	7/8	1 5/8	2 9/16	3
3 15/16	P-B22663H	4 1/4	11 3/4	15 1/4	4.944	4	1	—	2 5/8	8 1/2	5 7/16	1 5/16	2 1/4	2 15/16	3 7/16
4 7/16	P-B22671FH	4 3/4	13 1/2	16 1/2	5.534	4 3/4	3/4	2 1/2	2 3/4	9 3/8	6 1/8	1 3/32	1 3/8	3 11/32	3 3/4
4 15/16	P-B22679FH	5 1/2	15 1/2	18 1/2	6.056	5 3/8	7/8	2 3/4	3	10 7/8	6 3/4	1 3/16	1 1/2	3 21/32	4

Flange Block Dimensions (inches)



Type of Housing	Shaft Dia.	Unit Number	A	B	C	D	F	H	J	L	M	N	P	
			Circle	Square		◆	Bolts		▲	◆			◆	
3-Bolt Round	1 7/16	F-B22623H	3 7/16	5	—	5 7/8	2.708	1/2	5/8	3 5/16	2 13/16	2 1/4	6 1/4	9/16
	1 15/16	F-B22631H	4 1/4	5 3/4	4 1/16	6 11/16	3.075	1/2	1 1/16	3 9/16	3 13/64	2 31/64	7	43/64
4-Bolt Round	2 3/16	F-B22635H	4 7/8	6 3/8	4 1/2	7 7/8	3.159	5/8	1 1/16	3 25/32	3 9/32	3 5/32	7 3/4	2 1/32
	2 7/16	F-B22639H	5 3/8	6 3/4	4 49/64	7 3/4	3.362	5/8	3/4	3 31/32	3 27/64	3 5/8	8 1/8	43/64
	2 11/16	F-B22643H	6 1/4	7 7/8	5 9/16	9 1/8	3.863	3/4	7/8	4 7/16	4	4 5/32	9 1/2	3/4
	2 15/16	F-B22647H												
4-Bolt Square	3 7/16	F-B22655H	7 3/8	9 1/2	6 23/32	8 5/8	4.306	3/4	1 3/8	4 29/32	4 1/2	4 15/16	11 7/16	7/8
	3 15/16	F-B22663H	8 1/8	10 63/64	7 39/64	9 3/4	4.944	7/8	1 1/2	5 5/8	5 1/8	5 7/16	12 29/32	1 5/16

Flanged Cartridge Dimensions (inches)



Shaft Dia.	Unit Number	A	B	C	D	F	H	K	L	M	P	U	Y
		□	Circle	Square	◆	Bolts			◆		◆		▲
1 7/16	FC-B22623H	3.625	4 3/8	3 3/32	5 1/4	2.708	3/8	1/2	2 7/32	1 3/8	2 1/4	9/16	1 7/8
1 15/16	FC-B22631H	4.500	5 3/8	3 51/64	6 3/8	3.075	7/16	9/16	2 15/32	1 35/64	2 31/32	43/64	7/8
2 3/16	FC-B22635H	5.000	6	4 1/4	7 1/8	3.159	1/2	9/16	2 17/32	1 17/32	3 5/32	2 1/32	1
2 7/16	FC-B22639H	5.500	6 1/2	4 19/32	7 5/8	3.362	1/2	5/8	2 21/32	1 39/64	3 5/8	43/64	1
2 11/16	FC-B22643H	6.375	7 1/2	5 19/64	8 3/4	3.863	5/8	3/4	3 5/32	1 7/8	4 5/32	3/4	1 1/4
2 15/16	FC-B22647H												
3 7/16	FC-B22655H	7.375	8 5/8	6 3/32	10 1/4	4.306	3/4	1 5/16	3 13/32	2 23/64	4 15/16	7/8	1 1/4
3 15/16	FC-B22663H	8.125	9 3/8	6 5/8	10 7/8	4.944	3/4	1 1/8	3 31/32	2 9/16	5 7/16	1 5/16	2

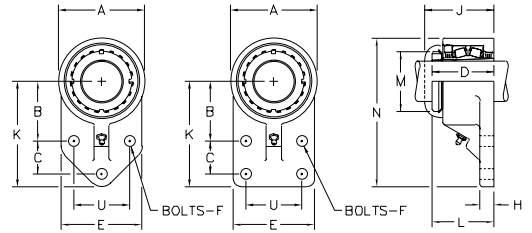
□ Tolerance, +.000 - .002"; bore tolerance for mounting +.002 - .000"
▲ Width dimension for closed end unit.

◆ Dimensions based on unmounted condition.
All units available with Type E lip seals or end closure.

New Link-Belt® Max Mount™ Spherical Roller Bearing

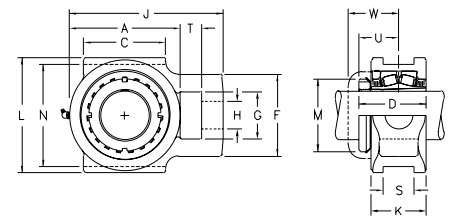
Link-Belt® Max Mount™

Dimensionally interchangeable
with collar-mounted units



Flange Bracket Dimensions (inches)

Type	Shaft Dia.	Unit Number	A	B	C	D	E	F	H	J	K	L	M	N	U
3-Bolt 4-Bolt						◆		Bolts		▲		◆			
•	17/16	FB-B22623H	37/16	23/8	11/4	2.708	31/4	1/2	5/8	35/16	41/4	213/16	21/4	531/32	2
•	115/16	FB-B22631H	41/4	215/16	15/8	3.075	4	1/2	11/16	39/16	53/16	313/64	231/32	75/16	23/4
•	27/16	FB-B22639H	53/8	33/4	13/4	3.362	47/8	5/8	3/4	331/32	61/4	327/64	35/32	815/16	3
•	211/16	FB-B22643H	61/4	37/8	21/4	3.863	53/4	3/4	7/8	47/16	7	4	35/8	101/8	4
•	215/16	FB-B22647H													



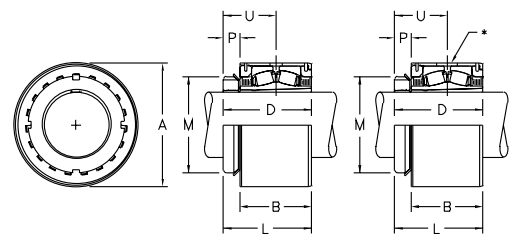
Takeup Block Dimensions (inches)

Shaft Dia.	Unit Number	A	C	D	F	G	H	J	K	L	M	N	S	T	U	W
				◆								□	□		◆	▲
17/16	T-B22623H	31/2	23/4	2.708	23/8	17/16	7/8	43/4	21/4	41/8	21/4	3.500	0.531	5/8	143/64	29/16
115/16	T-B22631H	43/8	33/8	3.075	33/16	115/16	11/8	515/16	21/2	43/4	231/64	4.000	0.687	3/4	155/64	29/32
23/16	T-B22635H	51/16	33/4	3.159	33/4	21/4	11/4	7	29/16	51/4	35/32	4.500	0.813	1	129/32	27/16
27/16	T-B22639H	59/16	4	3.362	41/8	21/2	13/8	713/16	211/16	57/8	35/8	5.125	1.063	11/4	23/64	29/16
211/16	T-B22643H	67/16	43/4	3.863	43/4	23/4	15/8	815/16	33/16	611/16	45/32	5.937	1.812	11/4	219/64	225/32
215/16	T-B22647H															
37/16	T-B22655H	73/8	51/2	4.306	47/8	27/8	17/8	10	37/16	713/16	415/16	6.812	1.812	19/16	29/16	3
315/16	T-B22663H	87/8	7	4.944	51/4	31/8	17/8	117/8	4	95/8	57/16	8.625	2.062	15/8	215/16	37/16

Tolerance; machined slots +.005 - .005"

Cartridge Unit Dimensions (inches)

Shaft Dia.	Unit Number	A	B	D	L	M	P	U
	H	□		◆	◆		◆	◆
17/16	CSE-B22623H	3.124	23/16	2.708	23/4	21/4	9/16	143/64
115/16	CSE-B22631H	3.833	225/64	3.075	31/16	231/64	43/64	155/64
23/16	CSE-B22635H	4.227	21/2	3.159	35/32	35/32	21/32	129/32
27/16	CSE-B22639H	4.621	25/8	3.362	319/64	35/8	43/64	23/64
211/16	CSE-B22643H	5.407	31/8	3.863	37/8	45/32	3/4	219/64
215/16	CSE-B22647H							
37/16	CSE-B22655H	6.194	37/16	4.306	419/64	415/16	7/8	29/16
315/16	CSE-B22663H	7.375	4	4.944	415/16	57/16	15/16	215/16
47/16	CSE-B22671H	7.769	49/16	5.534	521/32	61/8	13/32	311/32
415/16	CSE-B22679H	8.753	47/8	6.056	61/16	63/4	13/16	321/32



□ Tolerance; +.000 - .002"; bore tolerance for mounting +.002 - .000"

◆ Dimensions based on unmounted condition.

* Hole for fixed unit and slot for expansion unit are located in the same housing.

▲ Width dimension for closed end unit.

All units available with Type E lip seals or end closure.



Worldwide Service Locations

AUSTRALIA

Rexnord Australia Pty Ltd
40 Marigold St
Revesby, N.S.W. 2212
Australia
Tel: 61-2-9773-0575
Fax: 61-2-9774-5514

BRAZIL

Rexnord Correntes Ltda
Caixa Postal, 290
93001 Sao Leopoldo – RS
Brazil
Tel: 55-51-588-3000
Fax: 55-51-588-1334

CANADA

Rexnord Canada Ltd.
81 Maybrook Dr
Scarborough, Ontario
M1V 3Z2
Tel: 416-297-6868
Fax: 416-297-6873

CHINA

Rexnord China
Conch Building, Ste 621
1271 Zhongshan Xi Rd.
Shanghai, China 200051
Tel: 86-21-62701942
Fax: 86-21-62701943

EUROPE

Rexnord Belgium NV
Airport Ring Center
Maalbeekweg 17
1930 Zaventem
Belgium
Tel: 32-2-725-4060
Fax: 32-2-720-1023

LATIN AMERICA

Rexnord International Inc
4695 W. Greenfield Ave
Milwaukee, WI 53214 USA
Tel: 414-643-2242
Fax: 414-643-3666

MEXICO

Cadenas y Componentes
Rexnord SA de CV
Privada de los
Industriales 115
Cd. Industrial Benito Juarez
Zona Jurica
76100 Queretaro Qro
Tel: 52-42-18-50-00
Fax: 52-42-18-10-90

SINGAPORE

Rexnord International Inc.
36 Purvis St
Talib Center #02-01/04
Singapore 188613
Tel: 65-338-5622
Fax: 65-338-5422

UNITED STATES

Atlanta

2300 Lake Park Dr
#150
Smyrna, GA 30080
Tel: 770-431-7200
Fax: 770-431-7299

Columbus

3655 Brookham Dr
Ste J
Grove City, OH 43123
Tel: 614-675-1800
Fax: 614-675-1898

Dallas

1217 Corporate Dr W
Arlington, TX 76006
Tel: 817-640-3332
Fax: 817-640-8704

Fresno

1080 W Sierra Ave
Ste 102
Fresno, CA 93711
Tel: 559-435-1111
Fax: 559-439-6887



Rexnord Corporation
Link-Belt Bearing Division
7601 Rockville Road
Indianapolis, Indiana, 46214
Phone (317)273-5500
Fax (317)273-5620

