





**MEDWAY®**

26.80  
17.20  
16.80  
14.0  
0.37 X 45°  
Ø11.20  
Ø8.80  
Ø9.20  
Ø20.436 RE  
3.0  
Ø2.00  
Ø16.00

INJECTION HOLE CAN BE PUT IN EITHER OF THE 2 POSITIONS AS SHOWN

**CONTENTS**

DO NOT SCALE  
IF IN DOUBT ASK

TOLERANCE:  
.00 = + - 0.13  
.000 = + - 0.06  
ANGLE: + - 1/2°  
UNLESS OTHERWISE SPECIFIED

- 1 ABOUT US
- 2 ENGINEERING DATA
- 3 MP- SERIES MALE ROD ENDS
- 4 FP- SERIES FEMALE ROD ENDS
- 5 MB- SERIES MALE ROD ENDS
- 6 FB- SERIES FEMALE ROD ENDS
- 7 MP-SS SERIES MALE ROD ENDS
- 8 FP-SS SERIES FEMALE ROD ENDS
- 9 MP-S SERIES STUDED MALE ROD ENDS
- 10 FP-S SERIES STUDED FEMALE ROD ENDS
- 11 SP- SERIES SPHERICAL BEARINGS
- 12 SA- SERIES SPECIAL ASSEMBLIES
- 13 CROSS REFERENCES
- 15 CONVERSION TABLE

# ABOUT Us

## PRODUCTS & SERVICES

**MEDWAY POWER TRANSMISSION LTD** was founded in 1991 and has become one of the UK's leading manufacturers and national distributors of mechanical power transmission components.

The **MEDWAY®** brand name has become a symbol of quality and reliability for products such as V/Wedge Belts & Pulleys, Poly V-Belts & Pulleys, Timing Belts & Pulleys, Roller Chain & Sprockets, Flexible & Rigid Couplings, Weld On & Bolt On Hubs, Taper Bushes & Adaptors, Ball & Roller Bearings, Karting Products and UK manufactured Rod Ends & Spherical Bearings.

In addition to our **MEDWAY®** branded products we are the exclusive UK distributor for **TEXROPE®** industrial belting and master distributors for **DIAMOND®** Industrial Chain, **NACHI®** Ball & Roller Bearings and **CZ Autosport chain**.



**MEDWAY®** Rod Ends & Spherical Bearings are produced to international standards and tolerances, using top quality materials and workmanship to meet the ever increasing demands of our customers with our production department having over 20 years of manufacturing experience.

**MEDWAY POWER TRANSMISSION LTD.** is also able to manufacture (in addition to standard off the shelf products) specials to customer requirements. We offer a comprehensive engineering and design service to provide a solution for those application problems that cannot be solved with standard products.

Products can be manufactured from a wide range of materials; steel, stainless steel and aluminium housings are currently produced and can be zinc and colour or anodised to the colour of your choice, balls can also be manufactured in steel, stainless steel, bronze and aluminium.

In some cases a simple modification to a standard item is suitable, other solutions demand a complete blank sheet drawing board design, but whatever your application Medway have the expertise to deliver the finished product.

## MPT House



ROD END MANUFACTURE

**MEDWAY®** is a registered trademark of **MEDWAY POWER TRANSMISSION LTD.**

## ENGINEERING DATA

There are several factors that need to be addressed such as proper assembly to ensure the maximum performance and safe working of all Rod Ends and Spherical Bearings.

- Rod Ends where possible should be mounted vertically i.e. the housing member to the top, this will give maximum efficiency and life of the product.
- Self-locking nuts or washers should be used in applications involving vibration or shock loads.
- The operating temperature range is -35 degrees Celsius to + 170 degrees, however in temperatures in excess of 80 degrees Celsius there may be loss of load carrying capacity.
- Contaminated conditions can lead to premature failure, by keeping the product clean this will prolong the products life. MP, FP, MP-SS, FP-SS, MP-S, FP-S and SP-series products all have a unique ball to race fit which will wipe contamination away from the working surface.
- When operating MP, FP, MP-SS, FP-SS, MP-S, FP-S and SP- series products underwater, as with all polyamides they will absorb small amounts of moisture. However the gr nylon liner used in our products absorbs the least of all polyamides and therefore the dimensional changes are kept to a minimum. After being submerged in water at 23° for 6 months the dimension changes parallel are 0.05% and transverse 0.15%, above the nominal.
- When assembling Studded Rod Ends the hexagonal nut should be securely tightened and flush to its mating surface.
- Separate stops should be mounted into the assembly to eliminate any over-articulation of the Rod End over a cone value of 55°.
- All applications vary and so will product life, samples can be supplied for testing to help determine the suitability in actual operating conditions.
- Our Rod Ends and Spherical Bearings are manufactured to commercial standards and tolerances, please contact our sales or design team if you have any questions regarding a particular product, application or design.
- Clamping forces can cause distortion of the ball and a loss of internal tolerance, maximum torque values are shown in the table below.
- The static load ratings listed are based on the yield strength of the race material and define the maximum gradually applied RADIAL load which the Rod End assembly can accept without significant permanent deformation, the steel housing provides a back up so that the Rod End can sustain loading in excess of the listed values without collapsing.
- For highly stressed cycling applications or those involving impact loading a safety factor of 2 or 3 should be applied to arrive at a safe working load.
- Although Rod Ends of this type are not recommended for use in applications involving axial load, the construction is such that Rod Ends in this series can sustain axial loads up to 15% of the static rating without distress.

### MAXIMUM TORQUE VALUES

BORE SIZE	CLAMPING TORQUE BRONZE (NEWTON METRES)	CLAMPING TORQUE STEEL (NEWTON METRES)
3MM		1.5
0.1250"		1.5
0.1900"	1.6	5.6
5MM	1.6	5.6
6MM	2.2	19.6
0.2500"	2.5	22.5
0.3125"	6.8	28.0
8MM	6.8	28.0
0.3750"	9.5	56.4
10MM	10.6	65.0
0.4375"	13.5	79.0
12MM	14.0	93.0
0.5000"	14.7	104.0
14MM	15.8	167.0
0.6250"	18.0	203.0
16MM	18.0	203.0
18MM		234.0
0.7500"	20.3	259.0
20MM		272.0

## MP- SERIES GR-NYLON LINED MALE ROD ENDS

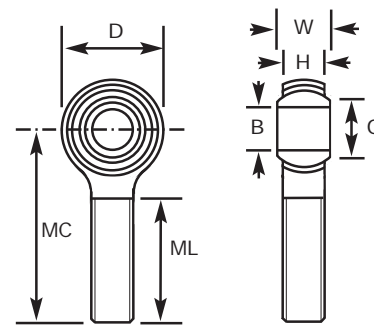


### MEDWAY®

Housing : Low Carbon steel 230M07PB. Zinc plate & colour passive.

Race: GR-Nylon

Ball: Low Carbon Steel 230M07PB.  
Case hardened electroless  
nickle plate.



## METRIC

BORE SIZE	PART NO. RIGHT HAND	PART NO. LEFT HAND	THREAD	W	H	D	ML	MC	O	STATIC LOAD RATING (NEWTONS)
3	MP-M03	MPL-M03	M3/0.5	6	4.5	12	15	27	5.20	3,040
5	MP-M05	MPL-M05	M5/0.8	8	6.0	16	20	33	7.50	5,340
6	MP-M06	MPL-M06	M6/1.0	9	6.75	18	22	36	9.30	7,720
8	MP-M08	MPL-M08	M8/1.25	12	9.0	22	25	42	10.40	12,775
10	MP-M10	MPL-M10	M10/1.5	14	10.5	26	29	48	12.90	16,960
10	MP-M10C	MPL-M10C	M10/1.25	14	10.5	26	29	48	12.90	16,960
12	MP-M12	MPL-M12	M12/1.75	16	12	30	33	54	15.40	22,900
12	MP-M12C	MPL-M12C	M12/1.25	16	12	30	33	54	15.40	22,900
14	MP-M14	MPL-M14	M14/2.0	19	13.5	34	36	60	16.80	28,950
16	MP-M16	MPL-M16	M16/2.0	21	15	38	40	66	19.30	37,130
16	MP-M16C	MPL-M16C	M16/1.5	21	15	38	40	66	19.30	37,130
18	MP-M18C	MPL-M18C	M18/1.5	23	16.5	46	43	72	21.80	45,730
20	MP-M20	MPL-M20	M20/2.5	25	18	50	46	78	24.50	55,240
20	MP-M20C	MPL-M20C	M20/1.5	25	18	50	46	78	24.50	55,240

## IMPERIAL UNF

BORE SIZE	PART NO. RIGHT HAND	PART NO. LEFT HAND	THREAD	W	H	D	ML	MC	O	STATIC LOAD RATING (NEWTONS)
3/16	MP-03	MPL-03	10-32	0.312	0.250	0.625	0.750	1.250	0.306	5,340
1/4	MP-04	MPL-04	1/4-28	0.375	0.281	0.750	1.000	1.562	0.354	8,450
5/16	MP-05	MPL-05	5/16-24	0.437	0.344	0.875	1.250	1.875	0.447	12,010
3/8	MP-06	MPL-06	3/8-24	0.500	0.406	1.000	1.250	1.938	0.516	16,900
7/16	MP-07	MPL-07	7/16-20	0.562	0.437	1.125	1.375	2.125	0.586	19,750
1/2	MP-08	MPL-08	1/2-20	0.652	0.500	1.312	1.500	2.438	0.700	28,900
5/8	MP-10	MPL-10	5/8-18	0.750	0.562	1.500	1.625	2.625	0.811	32,000
3/4	MP-12	MPL-12	3/4-16	0.875	0.687	1.750	1.750	2.875	0.978	52,400

B.S.F. threads are available from size MP-04, (MPL-04), and above by adding suffix "F" to the part number e.g. MP-08F, (MPL-08F).



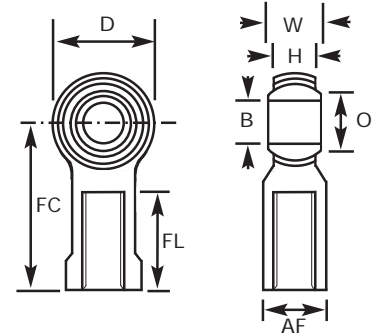
## FP- SERIES GR-NYLON LINED FEMALE ROD ENDS

**MEDWAY®**

Housing : Low Carbon steel 230M07PB. Zinc plate & colour passive.

Race: GR-Nylon

Ball: Low Carbon Steel 230M07PB. Case hardened electroless nickel plate.



### METRIC

BORE SIZE	PART NO. RIGHT HAND	PART NO. LEFT HAND	THREAD	W	H	D	FL	FC	O	AF	STATIC LOAD RATING (NEWTONS)
3	FP-M03	FPL-M03	M3/0.5	6	4.5	12	10	21	5.20	6.50	3,040
5	FP-M05	FPL-M05	M5/0.8	8	6.0	16	14	27	7.50	9.00	5,340
6	FP-M06	FPL-M06	M6/1.0	9	6.75	18	14	30	9.30	11.00	7,720
8	FP-M08	FPL-M08	M8/1.25	12	9.0	22	17	36	10.40	14.00	12,775
10	FP-M10	FPL-M10	M10/1.5	14	10.5	26	21	43	12.90	17.00	16,960
10	FP-M10C	FPL-M10C	M10/1.25	14	10.5	26	21	43	12.90	17.00	16,960
12	FP-M12	FPL-M12	M12/1.75	16	12	30	24	50	15.40	19.00	22,900
12	FP-M12C	FPL-M12C	M12/1.25	16	12	30	24	50	15.40	19.00	22,900
14	FP-M14	FPL-M14	M14/2.0	19	13.5	34	27	57	16.80	22.00	28,950
16	FP-M16	FPL-M16	M16/2.0	21	15	38	33	64	19.30	22.00	37,130
16	FP-M16C	FPL-M16C	M16/1.5	21	15	38	33	64	19.30	22.00	37,130
18	FP-M18C	FPL-M18C	M18/1.5	23	16.5	46	31	71	21.80	27.00	45,730
20	FP-M20	FPL-M20	M20/2.5	25	18	50	32	77	24.50	32.00	55,240
20	FP-M20C	FPL-M20C	M20/1.5	25	18	50	32	77	24.50	32.00	55,240

### IMPERIAL UNF

BORE SIZE	PART NO. RIGHT HAND	PART NO. LEFT HAND	THREAD	W	H	D	FL	FC	O	AF	STATIC LOAD RATING (NEWTONS)
3/16	FP-03	FPL-03	10-32	0.312	0.250	0.625	0.562	1.062	0.306	0.312	5,340
1/4	FP-04	FPL-04	1/4-28	0.375	0.281	0.750	0.750	1.312	0.354	0.375	8,450
5/16	FP-05	FPL-05	5/16-24	0.437	0.344	0.875	0.750	1.375	0.447	0.437	12,000
3/8	FP-06	FPL-06	3/8-24	0.500	0.406	1.000	0.932	1.625	0.516	0.562	16,900
7/16	FP-07	FPL-07	7/16-20	0.562	0.437	1.125	1.062	1.812	0.586	0.625	19,750
1/2	FP-08	FPL-08	1/2-20	0.652	0.500	1.312	1.187	2.125	0.700	0.750	28,910
5/8	FP-10	FPL-10	5/8-18	0.750	0.562	1.500	1.500	2.500	0.811	0.875	32,000
3/4	FP-12	FPL-12	3/4-16	0.875	0.687	1.750	1.562	2.875	0.978	1.000	52,400

B.S.F. threads are available from size FP-04, (FPL-04), and above by adding suffix "F" to the part number e.g. FP-08F, (FPL-08F).

## MB- SERIES BRONZE LINED MALE ROD ENDS

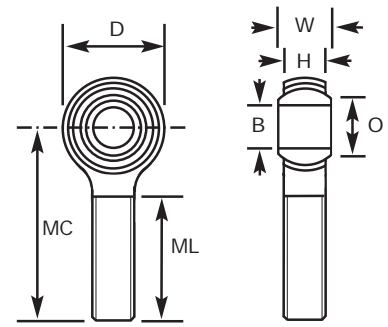


### MEDWAY®

Housing : Low Carbon steel 230M07PB. Zinc plate & colour passive.

Race: Bronze LB4 & sintered phosphor bronze oil impregnated.

Ball: Low Carbon Steel 230M07PB. Case hardened electroless nickel plate.



## METRIC

BORE SIZE	PART NO. RIGHT HAND	PART NO. LEFT HAND	THREAD	W	H	D	ML	MC	O	STATIC LOAD RATING (NEWTONS)
3	MB-M03	MBL-M03	M3/0.5	6	4.5	12	15	27	5.20	3,648
5	MB-M05	MBL-M05	M5/0.8	8	6.0	16	20	33	7.50	6,360
6	MB-M06	MBL-M06	M6/1.0	9	6.75	18	22	36	9.30	6,820
8	MB-M08	MBL-M08	M8/1.25	12	9.0	22	25	42	10.40	10,450
10	MB-M10	MBL-M10	M10/1.5	14	10.5	26	29	48	12.90	14,000
10	MB-M10C	MBL-M10C	M10/1.25	14	10.5	26	29	48	12.90	14,000
12	MB-M12	MBL-M12	M12/1.75	16	12	30	33	54	15.40	18,745
12	MB-M12C	MBL-M12C	M12/1.25	16	12	30	33	54	15.40	18,745
14	MB-M14	MBL-M14	M14/2.0	19	13.5	34	36	60	16.80	22,125
16	MB-M16	MBL-M16	M16/2.0	21	15	38	40	66	19.30	23,700
16	MB-M16C	MBL-M16C	M16/1.5	21	15	38	40	66	19.30	23,700
18	MB-M18C	MBL-M18C	M18/1.5	23	16.5	46	43	72	21.80	25,600
20	MB-M20	MBL-M20	M20/2.5	25	18	50	46	78	24.50	28,640
20	MB-M20C	MBL-M20C	M20/1.5	25	18	50	46	78	24.50	28,640

## IMPERIAL UNF

BORE SIZE	PART NO. RIGHT HAND	PART NO. LEFT HAND	THREAD	W	H	D	ML	MC	O	STATIC LOAD RATING (NEWTONS)
3/16	MB-03	MBL-03	10-32	0.312	0.250	0.625	0.750	1.250	0.306	6,360
1/4	MB-04	MBL-04	1/4-28	0.375	0.281	0.750	1.000	1.562	0.354	6,820
5/16	MB-05	MBL-05	5/16-24	0.437	0.344	0.875	1.250	1.875	0.447	10,450
3/8	MB-06	MBL-06	3/8-24	0.500	0.406	1.000	1.250	1.938	0.516	13,640
7/16	MB-07	MBL-07	7/16-20	0.562	0.437	1.125	1.375	2.125	0.586	16,360
1/2	MB-08	MBL-08	1/2-20	0.652	0.500	1.312	1.500	2.438	0.700	19,545
5/8	MB-10	MBL-10	5/8-18	0.750	0.562	1.500	1.625	2.625	0.811	22,500
3/4	MB-12	MBL-12	3/4-16	0.875	0.687	1.750	1.750	2.875	0.978	28,640

B.S.F. threads are available from size MB-04, (MBL-04), and above by adding suffix "F" to the part number e.g. MB-08F, (MBL-08F).  
Stainless Steel, Grade 303L, Rod Ends are available by adding suffix "SS" to the part number e.g. MB-M10SS, (MBL-M10SS).



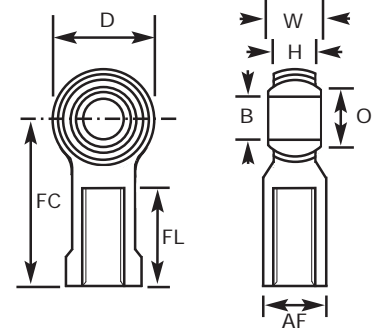
## FB- SERIES BRONZE LINED FEMALE ROD ENDS

### MEDWAY®

Housing : Low Carbon steel 230M07PB. Zinc plate & colour passive.

Race: Bronze LB4 & sintered phosphor bronze oil impregnated.

Ball: Low Carbon Steel 230M07PB. Case hardened electroless nickel plate.



## METRIC

BORE SIZE	PART NO. RIGHT HAND	PART NO. LEFT HAND	THREAD	W	H	D	FL	FC	O	AF	STATIC LOAD RATING (NEWTONS)
3	FB-M03	FBL-M03	M3/0.5	6	4.5	12	10	21	5.20	6.50	3,648
5	FB-M05	FBL-M05	M5/0.8	8	6.0	16	14	27	7.50	9.00	6,360
6	FB-M06	FBL-M06	M6/1.0	9	6.75	18	14	30	9.30	11.00	6,820
8	FB-M08	FBL-M08	M8/1.25	12	9.0	22	17	36	10.40	14.00	10,450
10	FB-M10	FBL-M10	M10/1.5	14	10.5	26	21	43	12.90	17.00	14,000
10	FB-M10C	FBL-M10C	M10/1.25	14	10.5	26	21	43	12.90	17.00	14,000
12	FB-M12	FBL-M12	M12/1.75	16	12	30	24	50	15.40	19.00	18,745
12	FB-M12C	FBL-M12C	M12/1.25	16	12	30	24	50	15.40	19.00	18,745
14	FB-M14	FBL-M14	M14/2.0	19	13.5	34	27	57	16.80	22.00	22,125
16	FB-M16	FBL-M16	M16/2.0	21	15	38	33	64	19.30	22.00	23,700
16	FB-M16C	FBL-M16C	M16/1.5	21	15	38	33	64	19.30	22.00	23,700
18	FB-M18C	FBL-M18C	M18/1.5	23	16.5	46	31	71	21.80	27.00	25,600
20	FB-M20	FBL-M20	M20/2.5	25	18	50	32	77	24.50	32.00	28,640
20	FB-M20C	FBL-M20C	M20/1.5	25	18	50	32	77	24.50	32.00	28,640

## IMPERIAL UNF

BORE SIZE	PART NO. RIGHT HAND	PART NO. LEFT HAND	THREAD	W	H	D	FL	FC	O	AF	STATIC LOAD RATING (NEWTONS)
3/16	FB-03	FBL-03	10-32	0.312	0.250	0.625	0.562	1.062	0.306	0.312	6,360
1/4	FB-04	FBL-04	1/4-28	0.375	0.281	0.750	0.750	1.312	0.354	0.375	6,820
5/16	FB-05	FBL-05	5/16-24	0.437	0.344	0.875	0.750	1.375	0.447	0.437	10,450
3/8	FB-06	FBL-06	3/8-24	0.500	0.406	1.000	0.932	1.625	0.516	0.562	13,640
7/16	FB-07	FBL-07	7/16-20	0.562	0.437	1.125	1.062	1.812	0.586	0.625	16,360
1/2	FB-08	FBL-08	1/2-20	0.652	0.500	1.312	1.187	2.125	0.700	0.750	19,545
5/8	FB-10	FBL-10	5/8-18	0.750	0.562	1.500	1.500	2.500	0.811	0.875	22,500
3/4	FB-12	FBL-12	3/4-16	0.875	0.687	1.750	1.562	2.875	0.978	1.000	28,640

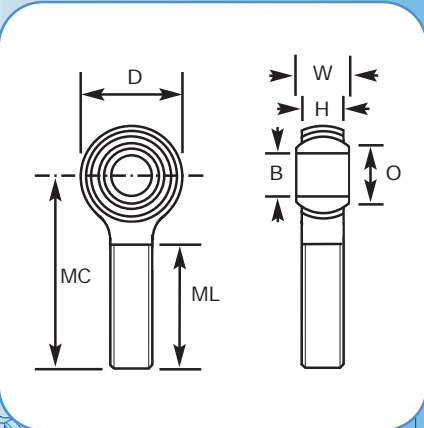
B.S.F. threads are available from size FB-04, (FBL-04), and above by adding suffix "F" to the part number e.g. FB-08F, (FBL-08F). Stainless Steel, Grade 303L, Rod Ends are available by adding suffix "SS" to the part number e.g. FB-M10SS, (FBL-M10SS).





## MP-SS SERIES STAINLESS STEEL MALE ROD ENDS

**MEDWAY®**  
 Housing : Stainless Steel Grade 303L  
 Race: GR-Nylon  
 Ball: Stainless steel Grade 440C



### METRIC

BORE SIZE	PART NO. RIGHT HAND	PART NO. LEFT HAND	THREAD	W	H	D	ML	MC	O	STATIC LOAD RATING (NEWTONS)
3	MP-M03SS	MPL-M03SS	M3/0.5	6	4.5	12	15	27	5.20	3,040
5	MP-M05SS	MPL-M05SS	M5/0.8	8	6.0	16	20	33	7.50	5,340
6	MP-M06SS	MPL-M06SS	M6/1.0	9	6.75	18	22	36	9.30	7,720
8	MP-M08SS	MPL-M08SS	M8/1.25	12	9.0	22	25	42	10.40	12,775
10	MP-M10SS	MPL-M10SS	M10/1.5	14	10.5	26	29	48	12.90	16,960
10	MP-M10CSS	MPL-M10CSS	M10/1.25	14	10.5	26	29	48	12.90	16,960
12	MP-M12SS	MPL-M12SS	M12/1.75	16	12	30	33	54	15.40	22,900
12	MP-M12CSS	MPL-M12CSS	M12/1.25	16	12	30	33	54	15.40	22,900
14	MP-M14SS	MPL-M14SS	M14/2.0	19	13.5	34	36	60	16.80	28,950
16	MP-M16SS	MPL-M16SS	M16/2.0	21	15	38	40	66	19.30	37,130
16	MP-M16CSS	MPL-M16CSS	M16/1.5	21	15	38	40	66	19.30	37,130
18	MP-M18CSS	MPL-M18CSS	M18/1.5	23	16.5	46	43	72	21.80	45,730
20	MP-M20SS	MPL-M20SS	M20/2.5	25	18	50	46	78	24.50	55,240
20	MP-M20CSS	MPL-M20CSS	M20/1.5	25	18	50	46	78	24.50	55,240

### IMPERIAL UNF

BORE SIZE	PART NO. RIGHT HAND	PART NO. LEFT HAND	THREAD	W	H	D	ML	MC	O	STATIC LOAD RATING (NEWTONS)
3/16	MP-03SS	MPL-03SS	10-32	0.312	0.250	0.625	0.750	1.250	0.306	5,340
1/4	MP-04SS	MPL-04SS	1/4-28	0.375	0.281	0.750	1.000	1.562	0.354	8,450
5/16	MP-05SS	MPL-05SS	5/16-24	0.437	0.344	0.875	1.250	1.875	0.447	12,010
3/8	MP-06SS	MPL-06SS	3/8-24	0.500	0.406	1.000	1.250	1.938	0.516	16,900
7/16	MP-07SS	MPL-07SS	7/16-20	0.562	0.437	1.125	1.375	2.125	0.586	19,750
1/2	MP-08SS	MPL-08SS	1/2-20	0.652	0.500	1.312	1.500	2.438	0.700	28,900
5/8	MP-10SS	MPL-10SS	5/8-18	0.750	0.562	1.500	1.625	2.625	0.811	32,000
3/4	MP-12SS	MPL-12SS	3/4-16	0.875	0.687	1.750	1.750	2.875	0.978	52,400

B.S.F. threads are available from size MP-04SS, (MPL-04SS), and above by adding suffix "F" to the part number e.g. MP-08FSS, (MPL-08FSS).  
 Bronze Race Rod Ends are available by using part numbers MB-M05SS, (MBL-M05SS).



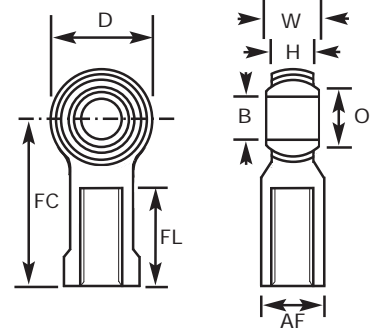
## FP-SS SERIES STAINLESS STEEL FEMALE ROD ENDS

**MEDWAY®**

Housing : Stainless Steel Grade 303L

Race: GR-Nylon

Ball: Stainless Steel Grade 440C



### METRIC

BORE SIZE	PART NO. RIGHT HAND	PART NO. LEFT HAND	THREAD	W	H	D	FL	FC	O	AF	STATIC LOAD RATING (NEWTONS)
3	FP-M03SS	FPL-M03SS	M3/0.5	6	4.5	12	10	21	5.20	6.50	3,040
5	FP-M05SS	FPL-M05SS	M5/0.8	8	6.0	16	14	27	7.50	9.00	5,340
6	FP-M06SS	FPL-M06SS	M6/1.0	9	6.75	18	14	30	9.30	11.00	7,720
8	FP-M08SS	FPL-M08SS	M8/1.25	12	9.0	22	17	36	10.40	14.00	12,775
10	FP-M10SS	FPL-M10SS	M10/1.5	14	10.5	26	21	43	12.90	17.00	16,960
10	FP-M10CSS	FPL-M10CSS	M10/1.25	14	10.5	26	21	43	12.90	17.00	16,960
12	FP-M12SS	FPL-M12SS	M12/1.75	16	12	30	24	50	15.40	19.00	22,900
12	FP-M12CSS	FPL-M12CSS	M12/1.25	16	12	30	24	50	15.40	19.00	22,900
14	FP-M14SS	FPL-M14SS	M14/2.0	19	13.5	34	27	57	16.80	22.00	28,950
16	FP-M16SS	FPL-M16SS	M16/2.0	21	15	38	33	64	19.30	22.00	37,130
16	FP-M16CSS	FPL-M16CSS	M16/1.5	21	15	38	33	64	19.30	22.00	37,130
18	FP-M18CSS	FPL-M18CSS	M18/1.5	23	16.5	46	31	71	21.80	27.00	45,730
20	FP-M20SS	FPL-M20SS	M20/2.5	25	18	50	32	77	24.50	32.00	55,240
20	FP-M20CSS	FPL-M20CSS	M20/1.5	25	18	50	32	77	24.50	32.00	55,240

### IMPERIAL UNF

BORE SIZE	PART NO. RIGHT HAND	PART NO. LEFT HAND	THREAD	W	H	D	FL	FC	O	AF	STATIC LOAD RATING (NEWTONS)
3/16	FP-03SS	FPL-03SS	10-32	0.312	0.250	0.625	0.562	1.062	0.306	0.312	5,340
1/4	FP-04SS	FPL-04SS	1/4-28	0.375	0.281	0.750	0.750	1.312	0.354	0.375	8,450
5/16	FP-05SS	FPL-05SS	5/16-24	0.437	0.344	0.875	0.750	1.375	0.447	0.437	12,000
3/8	FP-06SS	FPL-06SS	3/8-24	0.500	0.406	1.000	0.932	1.625	0.516	0.562	16,900
7/16	FP-07SS	FPL-07SS	7/16-20	0.562	0.437	1.125	1.062	1.812	0.586	0.625	19,750
1/2	FP-08SS	FPL-08SS	1/2-20	0.652	0.500	1.312	1.187	2.125	0.700	0.750	28,910
5/8	FP-10SS	FPL-10SS	5/8-18	0.750	0.562	1.500	1.500	2.500	0.811	0.875	32,000
3/4	FP-12SS	FPL-12SS	3/4-16	0.875	0.687	1.750	1.562	2.875	0.978	1.000	52,400

B.S.F. threads are available from size FP-04SS, (FPL-04SS), and above by adding suffix "F" to the part number e.g. FP-08FSS, (FPL-08FSS).  
Bronze Race Rod Ends are available by using part numbers FB-M05SS, (FBL-M05SS).

## MP-S SERIES STUDED MALE ROD ENDS



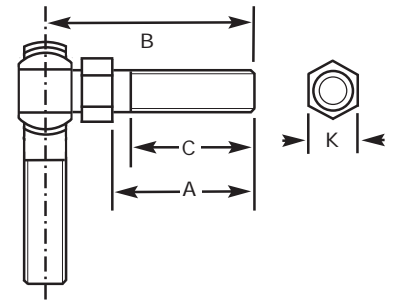
### MEDWAY®

Housing : Low Carbon steel 230M07PB. Zinc plate & colour passive.

Race: GR-Nylon

Ball: Low Carbon Steel 230M07PB. Case hardened electroless nickel plate.

Stud: Low Carbon Steel 230M07PB. Zinc plate & colour passive.



### METRIC

BORE SIZE	PART NO. RIGHT HAND	PART NO. LEFT HAND	THREAD	A	B	C	K	STATIC LOAD RATING (NEWTONS)
5	MP-M05S	MPL-M05S	M5/0.8	10	20	8	9	1,200
6	MP-M06S	MPL-M06S	M6/1.0	12	24	10	10	2,500
8	MP-M08S	MPL-M08S	M8/1.25	16	32	14	13	6,890
10	MP-M10S	MPL-M10S	M10/1.5	20	40	18	17	14,200
12	MP-M12S	MPL-M12S	M12/1.75	24	48	21	19	22,000
14	MP-M14S	MPL-M14S	M14/2.0	28	56	25	22	29,000
16	MP-M16S	MPL-M16S	M16/2.0	32	64	29	24	34,000

### IMPERIAL UNF

BORE SIZE	PART NO. RIGHT HAND	PART NO. LEFT HAND	THREAD	A	B	C	K	STATIC LOAD RATING (NEWTONS)
3/16	MP-03S	MPL-03S	10-32	0.500	1.016	0.437	0.312	1,200
1/4	MP-04S	MPL-04S	1/4-28	0.562	1.047	0.500	0.375	2,970
5/16	MP-05S	MPL-05S	5/16-24	0.687	1.234	0.594	0.437	6,880
3/8	MP-06S	MPL-06S	3/8-24	0.906	1.468	0.812	0.500	12,830
7/16	MP-07S	MPL-07S	7/16-20	1.125	1.968	1.000	0.625	20,690
1/2	MP-08S	MPL-08S	1/2-20	1.125	2.000	1.000	0.625	24,820
5/8	MP-10S	MPL-10S	5/8-18	1.125	2.125	1.000	0.750	33,880

B.S.F. threads are available from size MP-04S, (MPL-04S), and above by adding suffix "F" to the part number e.g. MP-08FS, (MPL-08FS).  
Stainless Steel, Grade 303L, Rod Ends are available by adding suffix "SS" to the part number e.g. MP-M10S-SS, (MPL-M10S-SS).  
Bronze Race Rod Ends are available by using part numbers MB-M05S, (MBL-M05S).



## FP-S SERIES STUDED FEMALE ROD ENDS

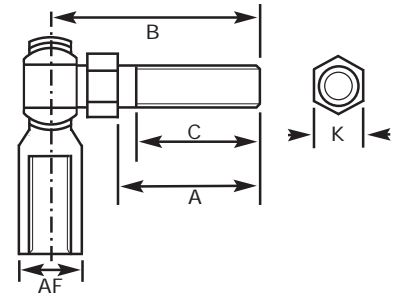
### MEDWAY®

Housing : Low Carbon steel 230M07PB. Zinc plate & colour passive.

Race: GR-Nylon

Ball: Low Carbon Steel 230M07PB. Case hardened electroless nickle plate.

Stud: Low Carbon Steel 230M07PB. Zinc plate & colour passive.



### METRIC

BORE SIZE	PART NO. RIGHT HAND	PART NO. LEFT HAND	THREAD	A	B	C	K	AF	STATIC LOAD RATING (NEWTONS)
5	FP-M05S	FPL-M05S	M5/0.8	10	20	8	9	9	1,200
6	FP-M06S	FPL-M06S	M6/1.0	12	24	10	10	11	2,500
8	FP-M08S	FPL-M08S	M8/1.25	16	32	14	13	14	6,890
10	FP-M10S	FPL-M10S	M10/1.5	20	40	18	17	17	14,200
12	FP-M12S	FPL-M12S	M12/1.75	24	48	21	19	19	22,000
14	FP-M14S	FPL-M14S	M14/2.0	28	56	25	22	22	29,000
16	FP-M16S	FPL-M16S	M16/2.0	32	64	29	24	27	34,000

DRAWN BY: WWW.MEDWAYENGINEERING.COM  
ISSUE: A  
MPT HOUSE, BRUNSWICK ROAD, COBBS WOOD IND EST, ASHFORD, KENT, TN23 1EL

DRAWING PART NO.: MATERIAL TREATMENT

ALL BURRS & SHARP EDGES. S COLOUR PASSIVATED TO A F 8 MICRONS

### IMPERIAL

BORE SIZE	PART NO. RIGHT HAND	PART NO. LEFT HAND	THREAD	A	B	C	K	AF	STATIC LOAD RATING (NEWTONS)
3/16	FP-03S	FPL-03S	10-32	0.500	1.016	0.437	0.312	0.312	1,200
1/4	FP-04S	FPL-04S	1/4-28	0.562	1.047	0.500	0.375	0.375	2,970
5/16	FP-05S	FPL-05S	5/16-24	0.687	1.234	0.594	0.437	0.437	6,880
3/8	FP-06S	FPL-06S	3/8-24	0.906	1.468	0.812	0.500	0.500	12,830
7/16	FP-07S	FPL-07S	7/16-20	1.125	1.968	1.000	0.625	0.625	20,690
1/2	FP-08S	FPL-08S	1/2-20	1.125	2.000	1.000	0.625	0.625	24,820
5/8	FP-10S	FPL-10S	5/8-18	1.125	2.125	1.000	0.750	0.750	33,880

B.S.F. threads are available from size FP-04S, (FPL-04S), and above by adding suffix "F" to the part number e.g. FP-08FS, (FPL-08FS). Stainless Steel, Grade 303L, Rod Ends are available by adding suffix "SS" to the part number e.g. FP-M10S-SS, (FPL-M10S-SS). Bronze Race Rod Ends are available by using part numbers FB-M05S, (FBL-M05S).

## SP- SERIES GR-NYLON LINED SPHERICAL BEARINGS

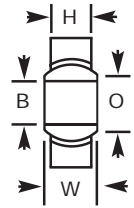
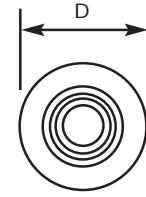


### MEDWAY®

Housing : Low Carbon steel 230M07PB. Zinc plate & colour passive.

Race: GR-Nylon

Ball: Low Carbon Steel 230M07PB.  
Case hardened electroless nickle plate.



## METRIC

BORE SIZE	PART No.	W	H	D	O	STATIC LOAD RATING (NEWTONS)
5	SP-M05	8	6	16	7.50	5,340
6	SP-M06	9	6.75	18	9.30	7,720
8	SP-M08	12	9	22	10.40	12,775
10	SP-M10	14	10.50	26	12.90	16,960
12	SP-M12	16	12	30	15.40	22,900
14	SP-M14	19	13.50	34	16.80	28,950
16	SP-M16	21	15	38	19.38	37,130

## IMPERIAL UNF

BORE SIZE	PART No.	W	H	D	O	STATIC LOAD RATING (NEWTONS)
3/16	SP-03	0.281	0.218	0.5625	0.293	4,900
1/4	SP-04	0.343	0.250	0.6562	0.364	7,150
5/16	SP-05	0.375	0.281	0.7500	0.419	12,000
3/8	SP-06	0.406	0.312	0.8125	0.475	13,090
7/16	SP-07	0.437	0.343	0.9062	0.530	16,100
1/2	SP-08	0.500	0.390	1.000	0.600	19,250
5/8	SP-10	0.625	0.500	1.1875	0.739	30,250

Bronze Race Spherical Bearings are available by using part numbers e.g. SB-08.

## SA- SERIES SPECIAL ASSEMBLIES

### SA- SERIES

INJECTION HOLE CAN BE  
PUT IN EITHER OF THE 2  
POSITIONS AS SHOWN

27.20  
26.80

17.20

**MEDWAY POWER TRANSMISSION LTD.** is also able to manufacture (in addition to standard off the shelf products) specials to customer requirements. We offer a comprehensive engineering and design service to provide a solution for those application problems that cannot be solved with standard products.

The products shown on this page are all non standard items and have been designed and manufactured by **MEDWAY POWER TRANSMISSION LTD** to suit individual customer needs.

In some cases a simple modification to a standard item is suitable, other solutions demand a complete blank sheet drawing board design, but whatever your application Medway have the expertise to deliver the finished product.

Products can be manufactured from a wide range of materials; steel, stainless steel and aluminium housings are currently produced and can be zinc and colour or anodised to the colour of your choice, balls can also be manufactured in steel, stainless steel, bronze and aluminium.

This is just a selection of the type of products we are able to manufacture so please do not hesitate to contact **MEDWAY POWER TRANSMISSION LTD's** sales department for further details and assistance.



## CROSS REFERENCE LISTING MALE

### METRIC

INJECTION HOSE  
PLUG IN EITHER  
POSITIONS

MEDWAY	ALINABAL	ASAHI	TUTHILL	HIRSCHMANN	IKO	ROSE	SKF
MP-M03	MPM-3M	JAM3	MJ-03M	SM-03	POS3	MM-3	SAK-3M
MP-M05	MPM-5M	JAM5	MJ-05M	SM-05	POS5	MM-5	SAK-5M
MP-M06	MPM-6M	JAM6	MJ-06M	SM-06	POS6	MM-6	SAK-6M
MP-M08	MPM-8M	JAM8	MJ-08M	SM-08	POS8	MM-8K	SAK-8M
MP-M10	MPM-10M	JAM10	MJ-10M	SM-10	POS10	MM-10K	SAK-10M
MP-M10C	-	JAM10S	MJ-10M-C	-	-	MM-10	-
MP-M12	MPM-12M	JAM12	MJ-12M	SM-12	POS12	MM-12GK	SAK-12M
MP-M12C	-	JAM12S	MJ-12M-C	-	-	MM-12G	-
MP-M14	MPM-14M	JAM14	MJ-14M	SM-14	POS14	MM-14GK	SAK-14M
MP-M14C	-	JAM14S	MJ-14M-C	-	-	MM-14G	-
MP-M16	MPM-16M	JAM16	MJ-16M	SM-16	POS16	MM-16GK	SAK-16M
MP-M16C	-	JAM16S	MJ-16M-C	-	-	MM-16G	-
MP-M18C	-	JAM18S	MJ-18M-C	-	POS18	MM-18G	-
MP-M20	MPM-20M	-	MJ-20M	SM-20	-	MM-20G	SAK-18M
MP-M20C	-	JAM20S	MJ-20M-C	-	POS20	MM-20GK	-

### IMPERIAL

S & SHAR  
R PASSIVA  
DNS

MEDWAY	ALINABAL	ASAHI	TUTHILL	HIRSCHMANN	IKO	ROSE	SKF
MP-03	PM-3G	-	MJ-03	-	POS3B	RM-3U	-
MP-04	PM-4G	-	MJ-04	-	POS4B	RM-4U	-
MP-04F	-	-	MJ-04F	-	-	RM-4	-
MP-05	PM-5G	-	MJ-05	-	POS5B	RM-5U	-
MP-05F	-	-	MJ-05F	-	-	RM-5	-
MP-06	PM-6G	-	MJ-06	-	POS6B	RM-6U	-
MP-06F	-	-	MJ-06F	-	-	RM-6	-
MP-07	PM-7G	-	MJ-07	-	POS7B	RM-7U	-
MP-07F	-	-	MJ-07F	-	-	RM-7	-
MP-08	PM-8G	-	MJ-08	-	POS8B	RM-8U	-
MP-08F	-	-	MJ-08F	-	-	RM-8	-
MP-10	PM-10G	-	MJ-10	-	POS10B	RM-10U	-

Note: Whilst every care has been taken to make this listing as accurate as possible **MEDWAY POWER TRANSMISSION LTD.** will not accept any responsibility for any errors or omissions that may have occurred, manufacturers part numbers have been used for descriptive purposes only i.e. male / female, thread size / pitch, right / left hand etc. The materials used and the load rating may vary from manufacturer to manufacturer, therefore please check the full specification prior to ordering.

## CROSS REFERENCE LISTING FEMALE

### METRIC

INJECTION HOSE  
PLUG IN EITHER  
POSITIONS

MEDWAY	ALINABAL	ASAHI	TUTHILL	HIRSCHMANN	IKO	ROSE	SKF
FP-M03	MPF-3M	JAF3	FJ-03M	SF-3	PHS3	MF-3	SIK-3M
FP-M05	MPF-5M	JAF5	FJ-05M	SF-5	PHS5	MF-5	SIK-5M
FP-M06	MPF-6M	JAF6	FJ-06M	SF-6	PHS6	MF-6	SIK-6M
FP-M08	MPF-8M	JAF8	FJ-08M	SF-8	PHS8	MF-8K	SIK-8M
FP-M10	MPF-10M	JAF10	FJ-10M	SF-10	PHS10	MF-10K	SIK-10M
FP-M10C	-	JAF10S	FJ-10M-C	-	-	MF-10	-
FP-M12	MPF-12M	JAF12	FJ-12M	SF-12	PHS12	MF-12GK	SIK-12M
FP-M12C	-	JAF12S	FJ-12M-C	-	-	MF-12G	-
FP-M14	MPF-14M	JAF14	FJ-14M	SF-14	PHS14	MF-14GK	SIK-14M
FP-M14C	-	JAF14S	FJ-14M-C	-	-	MF-14G	-
FP-M16	MPF-16M	JAF16	FJ-16M	SF-16	PHS16	MF-16GK	SIK-16M
FP-M16C	-	JAF16S	FJ-16M-C	-	-	MF-16G	-
FP-M18C	-	JAF18S	FJ-18M-C	-	PHS18	MF-18G	-
FP-M20	MPF-20M	-	FJ-20M	SF-20	-	MF-20G	SIK-18M
FP-M20C	-	JAF20S	FJ-20M-C	-	PHS20	MF-20GK	-

### IMPERIAL

S & SHAR  
R PASSIVA  
DNS

MEDWAY	ALINABAL	ASAHI	TUTHILL	HIRSCHMANN	IKO	ROSE	SKF
FP-03	PF-3G	-	FJ-03	-	PHS3B	RF-3U	-
FP-04	PF-4G	-	FJ-04	-	PHS4B	RF-4U	-
FP-04F	-	-	FJ-04F	-	-	RF-4	-
FP-05	PF-5G	-	FJ-05	-	PHS05B	RF-5U	-
FP-05F	-	-	FJ-05F	-	-	RF-5	-
FP-06	PF-6G	-	FJ-06	-	PHS06B	RF-6U	-
FP-06F	-	-	FJ-06F	-	-	RF-6	-
FP-07	PF-7G	-	FJ-07	-	PHS07B	RF-7U	-
FP-07F	-	-	FJ-07F	-	-	RF-7	-
FP-08	PF-8G	-	FJ-08	-	PHS8B	RF-8U	-
FP-08F	-	-	FJ-08F	-	-	RF-8	-
FP-10	PF-10G	-	FJ-10	-	PHS10B	RF-10U	-

Note: Whilst every care has been taken to make this listing as accurate as possible MEDWAY POWER TRANSMISSION LTD. will not accept any responsibility for any errors or omissions that may have occurred, manufacturers part numbers have been used for descriptive purposes only i.e. male / female, thread size / pitch, right / left hand etc. The materials used and the load rating may vary from manufacturer to manufacturer, therefore please check the full specification prior to ordering.



# CONVERSION TABLES

## MM TO INCH

## NEWTONS To POUNDS (N TO lbs)

MM	INCH		MM	INCH	MM	INCH
1.000	0.039		25.40	1.000	73.00	2.874
1.587	0.062	1/16	26.00	1.0241	74.00	2.913
1.984	0.078	5/64	27.00	1.063	75.00	2.953
2.000	0.079		28.00	1.102	76.00	2.992
2.381	0.094	7/64	28.575	1.125	76.20	3.000
3.000	0.118		29.00	1.142	77.00	3.031
3.175	0.125	1/8	30.00	1.181	78.00	3.071
3.572	0.141	9/64	31.00	1.220	79.00	3.110
3.969	0.156	5/32	31.750	1.250	80.00	3.150
4.000	0.158		32.00	1.260	81.00	3.189
4.366	0.172	11/64	33.00	1.299	82.00	3.228
4.762	0.187	3/16	34.00	1.339	82.55	3.250
5.000	0.197		34.925	1.375	83.00	3.268
5.566	0.219	7/32	35.00	1.378	84.00	3.307
6.000	0.236		36.00	1.417	85.00	3.346
6.350	0.250	1/4	37.00	1.457	86.00	3.386
7.000	0.276		38.00	1.496	87.00	3.425
7.144	0.281	9/32	38.10	1.500	88.00	3.465
7.937	0.312	5/16	39.00	1.535	88.90	3.500
8.000	0.315		40.00	1.575	89.00	3.504
8.731	0.344	11/32	41.00	1.614	90.00	3.543
9.000	0.354		41.275	1.625	91.00	3.583
9.128	0.359	23/64	42.00	1.653	92.00	3.622
9.525	0.375	3/8	43.00	1.693	93.00	3.661
10.000	0.394		44.00	1.732	94.00	3.701
10.319	0.406	13/32	44.45	1.750	95.00	3.740
11.000	0.433		45.00	1.772	95.25	3.750
11.112	0.437	7/16	46.00	1.811	96.00	3.779
11.509	0.453	29/64	47.00	1.850	97.00	3.819
11.906	0.469	15/32	47.625	1.875	98.00	3.858
12.000	0.472		48.00	1.890	99.00	3.898
12.700	0.500	1/2	49.00	1.929	100.0	3.937
13.000	0.512		50.00	1.968	101.6	4.000
13.494	0.531	17/32	50.80	2.000	110.0	4.331
14.000	0.551		51.00	2.008	114.3	4.500
14.287	0.562	9/16	52.00	2.047	120.0	4.724
15.000	0.590		53.00	2.087	127.0	5.000
15.081	0.594	19/32	54.00	2.126	130.0	5.118
15.875	0.625	5/8	55.00	2.165	139.7	5.500
16.000	0.630		56.00	2.205	140.0	5.512
16.669	0.656	21/32	57.00	2.244	150.0	5.905
17.000	0.669		57.70	2.250	152.4	6.000
17.462	0.687	11/16	58.00	2.283	160.0	6.299
18.000	0.709		59.00	2.323	165.1	6.500
18.256	0.719	23/32	60.00	2.362	170.0	6.693
19.000	0.748		61.00	2.402	177.8	7.000
19.050	0.750	3/4	62.00	2.441	180.0	7.087
19.844	0.781	25/32	63.00	2.480	190.0	7.480
20.000	0.787		63.50	2.500	190.5	7.500
20.637	0.812	13/16	64.00	2.520	200.0	7.874
21.000	0.827		65.00	2.559	203.2	8.000
21.431	0.844	27/32	66.00	2.598	210.0	8.268
22.000	0.866		67.00	2.638	215.9	8.500
22.225	0.875	7/8	68.00	2.677	220.0	8.661
23.000	0.905		69.00	2.716	228.6	9.000
23.815	0.937	15/16	69.85	2.750	230.0	9.055
24.000	0.945		70.00	2.756	240.0	9.449
24.606	0.969	31/32	71.00	2.795	241.3	9.500
25.000	0.984		72.00	2.835	250.0	9.842

N	lbs	N	lbs	N	lbs	N	lbs
10.0	2.25	355.8	80.0	4448	1,000	60,000	13,490
20.0	4.50	400.0	90.0	5,000	1,124	70,000	15,740
30.0	6.75	444.8	100.0	6,000	1,349	80,000	17,990
40.0	9.00	500.0	112.4	7,000	1,574	88,960	20,000
44.48	10.00	600.0	134.9	8,000	1,799	90,000	20,230
50.0	11.24	700.0	157.4	8,896	2,000	100,000	22,500
60.0	13.49	800.0	179.9	9,000	2,032	133,440	30,000
70.0	15.74	889.6	200.0	10,000	2,250	177,920	40,000
80.0	17.99	900.0	202.3	13,344	3,000	200,000	45,000
88.96	20.00	1,000	225.0	17,792	4,000	222,400	50,000
90.0	20.23	1,334.4	300.0	20,000	4,500	266,880	60,000
100.0	22.50	1,779.2	400.0	22,240	5,000	300,000	67,500
133.44	30.00	2,000	450.0	26,688	6,000	311,360	70,000
177.92	40.00	2,224	500.0	30,000	6,750	355,840	80,000
200.0	45.00	2,668.8	600.0	31,136	7,000	400,000	90,000
222.40	50.00	3,000	675.0	35,584	8,000	444,800	100,000
266.88	60.00	3,113.6	700.0	40,000	9,000	500,000	112,400
300.0	67.50	3558.4	800.0	44,480	10,000		
311.36	70.00	4,000	900.0	50,000	11,240		

### TORQUE CONVERSION (Nm To lbs/in)

Nm	lbs/in	Nm	lbs/in	Nm	lbs/in	Nm	lbs/in
0.03	0.25	0.23	2.00	0.68	6.00	1.69	15.00
0.04	0.35	0.25	2.22	0.80	7.09	1.81	16.00
0.05	0.44	0.30	2.66	0.90	8.00	2.00	17.72
0.06	0.50	0.34	3.00	1.00	8.86	2.71	24.00
0.08	0.71	0.40	3.54	1.13	10.00	3.00	26.58
0.10	0.89	0.50	4.43	1.20	10.63	3.50	31.01
0.11	1.00	0.56	5.00	1.35	12.00	5.00	44.30
0.20	1.77	0.60	5.32	1.50	13.29		

# MEDWAY®

Other products in the MEDWAY® range include



## MEDWAY POWER TRANSMISSION LTD

M.P.T. HOUSE  
BRUNSWICK ROAD  
COBBS WOOD INDUSTRIAL ESTATE  
ASHFORD  
KENT  
TN23 1EL  
U.K.



+44 (0) 1233 663340



+44 (0) 1233 664440



sales@medwaypt.co.uk



www.medwaypt.co.uk