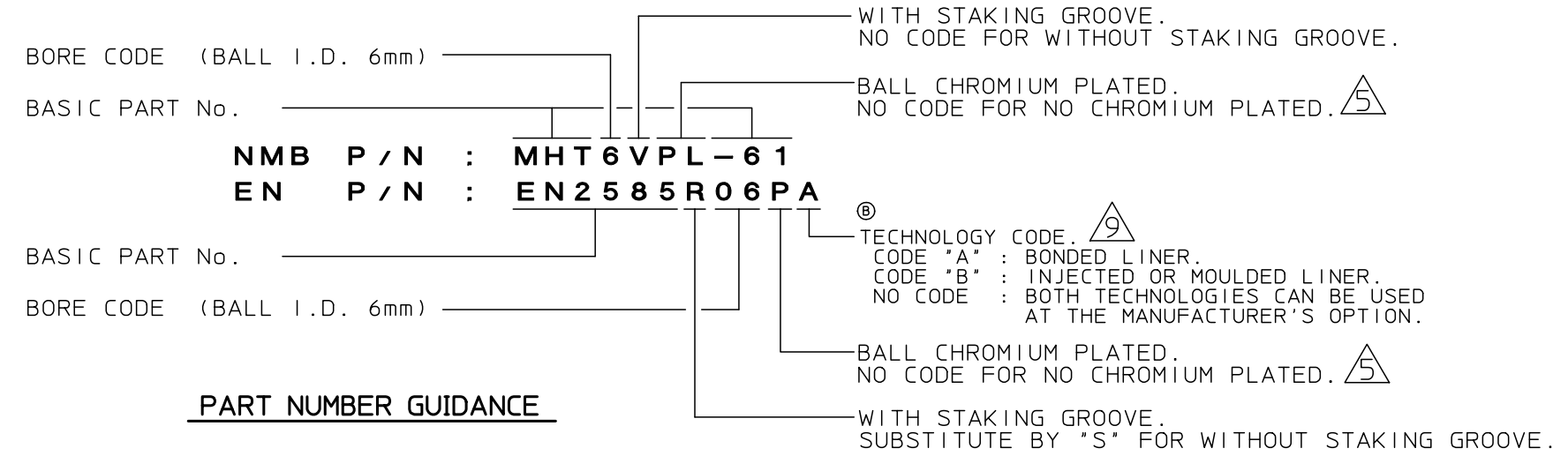
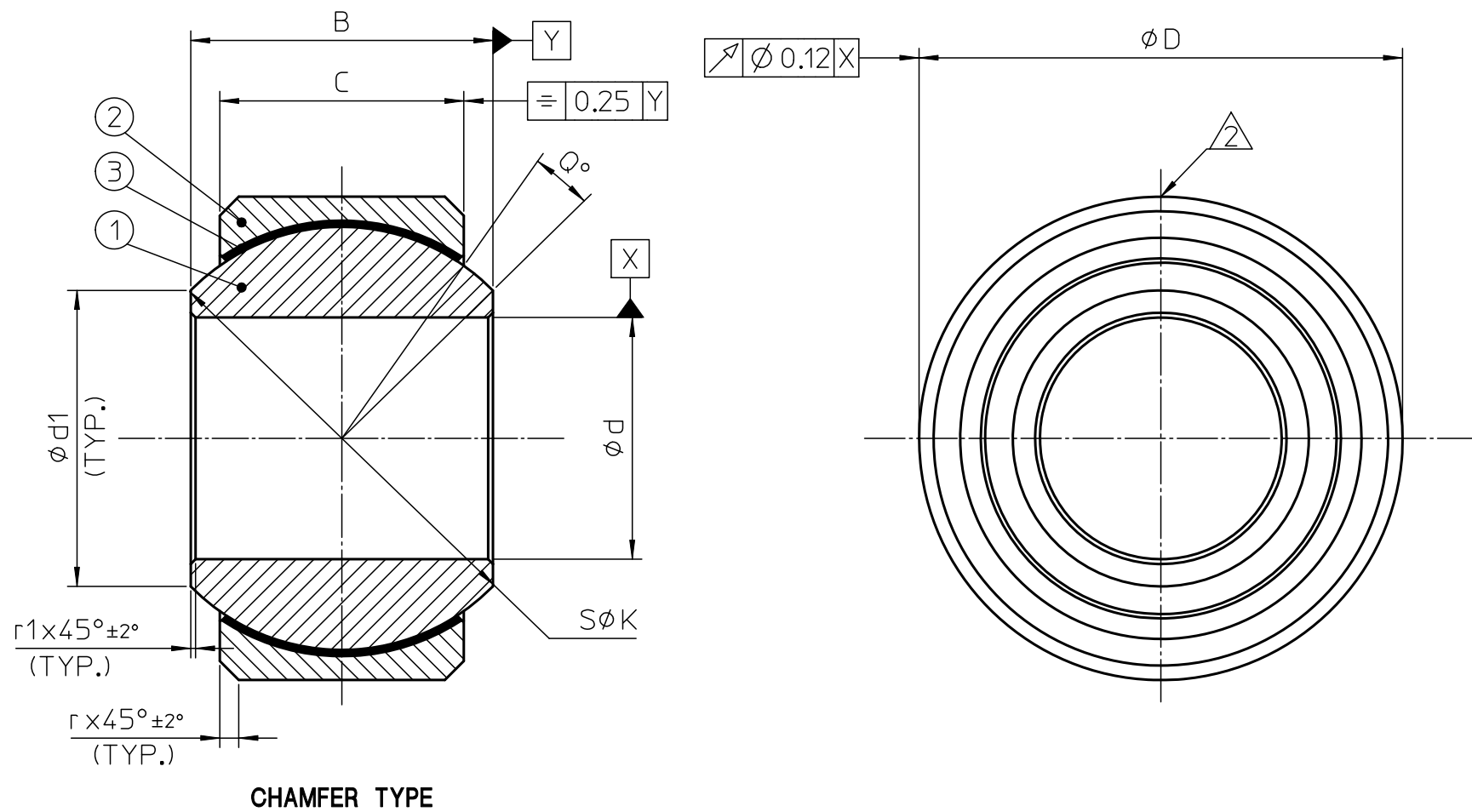


BEARING PART NUMBER				d	D	C	B	TOLERANCES				d1	K	r	r1	N	P	R	T	C°	Q° ^{a)}	APPROX. WEIGHT	STARTING TORQUES	PERMISSIBLE STATIC LOADS		RADIAL DYNAMIC LOAD	
WITHOUT GROOVE		WITH GROOVE		NOMINAL	±0.1	0 -0.06	0	(μm)				MIN.	(REF.)	0	+0.1 0	0	+0.1 0	MAX.	±0.5	±0.5	MIN.	g	(Nm)	RADIAL	AXIAL ^{b)}	25,000 CYCLES	(kN)
AECMA	NMB	AECMA	NMB					ΔDmp	ΔDs	Δdmp	Δds													(kN)	(kN)		
EN2585S05	MHT5-61	EN2585R05	MHT5V-61	5	16	8.5	11.0	0	+5	-8	+13	7.7	13.5	14.2	0.7	0.2	0.8	20	15°	16	0.08 TO 0.50	42.6	7.2	25.6			
EN2585S06	MHT6-61	EN2585R06	MHT6V-61	6	18	8.0	11.0	0	+5	-8	+13	10.3	15.1	16.2	0.7	0.2	0.8	20	14°	17	0.12 TO 0.80	45.7	6.4	27.4			
EN2585S08	MHT8-61	EN2585R08	MHT8V-61	8	21	10.0	12.5	0	+5	-8	+13	12.9	17.5	18.4	0.9	0.9	1.0	10°	27	27	0.12 TO 0.80	68.7	11.7	41.2			
EN2585S10	MHT10-61	EN2585R10	MHT10V-61	10	26	13.0	16.0	0	+5	-8	+13	15.5	22.3	23.4	0.9	1.0	1.0	10°	49	49	0.12 TO 0.80	116.4	21.5	64.0			
EN2585S12	MHT12-61	EN2585R12	MHT12V-61	12	29	13.5	17.0	0	+5	-8	+13	18.9	25.5	26.4	0.9	1.0	1.0	10°	62	62	0.12 TO 0.80	139.0	24.1	76.5			
EN2585S15	MHT15-61	EN2585R15	MHT15V-61	15	30	14.5	18.0	0	+5	-8	+13	20.1	27.5	27.4	0.9	1.0	1.0	10°	69	69	0.12 TO 0.80	159.1	29.0	87.5			
EN2585S17	MHT17-61	EN2585R17	MHT17V-61	17	35	16.0	20.0	0	+5	-8	+13	23.5	31.8	31.8	0.9	1.0	1.0	10°	104	104	0.12 TO 0.80	207.5	36.0	113.9			
EN2585S20	MHT20-61	EN2585R20	MHT20V-61	20	54	26.0	32.0	0	+5	-8	+13	35.3	47.7	50.8	0.9	1.0	1.0	10°	445	445	0.25 TO 1.00	496.6	93.2	248.3			
EN2585S25	MHT25-61	EN2585R25	MHT25V-61	25	54	26.0	32.0	0	+5	-8	+13	40.9	53.2	56.8	0.9	1.0	1.0	10°	445	445	0.25 TO 1.00	496.6	93.2	248.3			
EN2585S30	MHT30-61	EN2585R30	MHT30V-61	30	60	28.0	34.0	0	+5	-8	+13	45.5	58.1	61.8	0.9	1.0	1.0	10°	445	445	0.40 TO 2.00	587.5	109.6	293.7			
EN2585S35	MHT35-61	EN2585R35	MHT35V-61	35	65	29.0	36.0	0	+5	-8	+13	47.0	60.5	64.8	0.9	1.0	1.0	10°	445	445	0.40 TO 2.00	666.0	117.6	333.0			
EN2585S40	MHT40-61	EN2585R40	MHT40V-61	40	68	31.0	38.0	0	+5	-8	+13	54.1	67.9	72.8	0.9	1.0	1.0	10°	445	445	0.60 TO 2.70	745.6	136.6	372.8			
EN2585S45	MHT45-61	EN2585R45	MHT45V-61	45	76	33.0	41.0	0	+5	-8	+13	60.3	74.7	78.8	0.9	1.0	1.0	10°	445	445	0.60 TO 2.70	895.9	155.6	447.9			
EN2585S50	MHT50-61	EN2585R50	MHT50V-61	50	82	35.0	44.0	0	+5	-8	+13	63.4	82.0	92.8	0.9	1.0	1.0	10°	445	445	0.60 TO 2.70	1,024.7	176.2	512.3			
EN2585S50	MHT55-61	EN2585R55	MHT55V-61	55	96	40.0	52.0	0	+5	-8	+13	63.4	82.0	92.8	0.9	1.0	1.0	10°	1,580	1,580	0.60 TO 2.70	1,298.7	221.2	649.3			

Δ ds = DEVIATION OF A SINGLE BORE DIAMETER. Δ dmp = SINGLE PLANE MEAN BORE DIAMETER DEVIATION. Δ Ds = DEVIATION OF A SINGLE OUTSIDE DIAMETER. Δ Dmp = SINGLE PLANE MEAN OUTSIDE DIAMETER DEVIATION.
 a) THE ACCEPTANCE VALUE IS THE MAXIMUM VALUE FOR THE USER.
 b) THESE VALUES APPLY TO LOOSE SPHERICAL BEARINGS. FOR INSTALLED BEARINGS, THE PUSH-OUT LOADS MAY BE SMALLER THAN THESE VALUES.

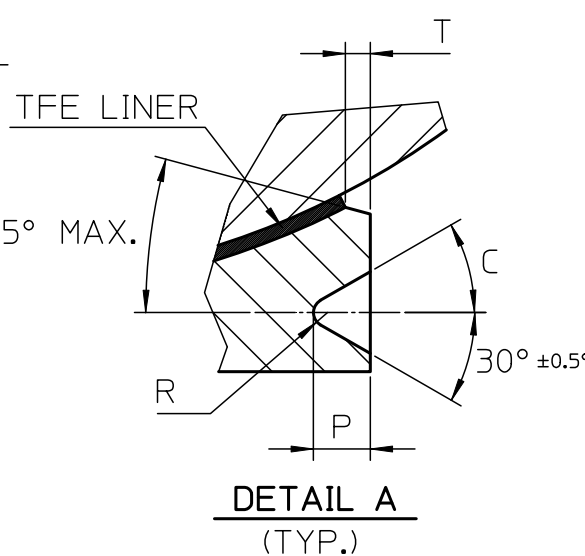
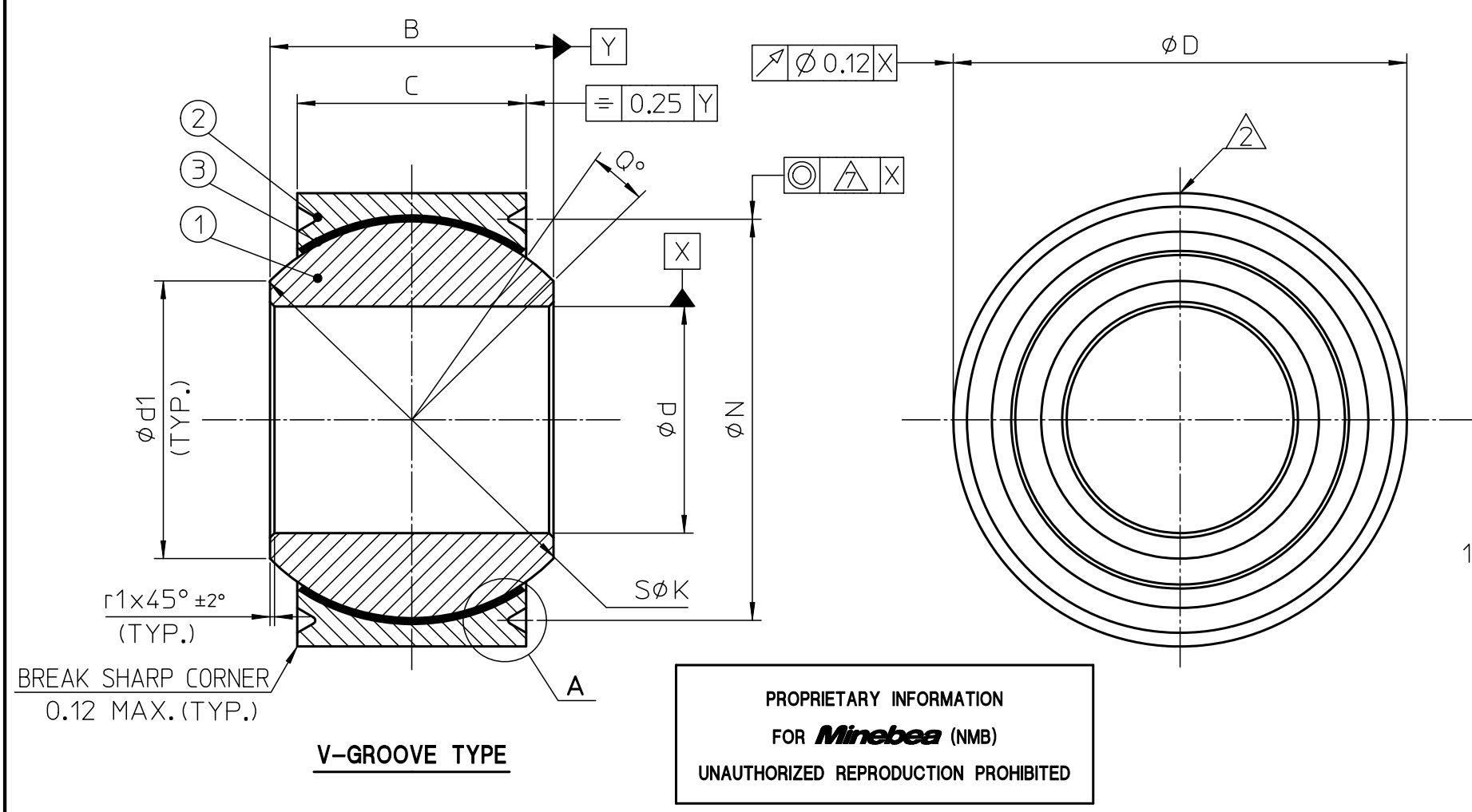
NOTES:

- SURFACE FINISH : BALL SPH. O.D. 0.2 μmRa, BALL I.D., ENDS AND RACE O.D. 0.8 μmRa, ALL OTHER MACHINED SURFACES 3.2 μmRa MAX.
- MARKING : ELECTRO-CHEM. ETCHED WITH "NMB", NMB PART NO. AND EN PART NO. BEARINGS WITH INSUFFICIENT SIZE WILL BE MARKED WITH EN PART NO. ONLY.
- PACKAGE : INDIVIDUALLY AND DRY IN SEALED POLY. BAGS. EACH POLY. BAG SHALL BE IDENTIFIED WITH "NMB", NMB PART NO. AND EN PART NO.
- LUBRICATION : DRY.
- CHROMIUM PLATED ON BALL SPHERICAL O.D. PER AMS-QQ-C-320, THICKNESS 15 μm TO 50 μm. (ENDS OPTION)
- TEMP. RANGE : -55°C TO +163°C.
- ød ≤ 8: ø0.08, ød > 8: ø0.12.
- CLEANING FOR BALL IS REQUIRED BEFORE SWAGING, CLEANING METHOD ACC. TO ISO8075.
- TECHNOLOGY : NMB BEARING IS AVAILABLE WITH BONDED LINER TECHNOLOGY ONLY.
- TECHNICAL SPEC: EN2755.
- SIMILARITY ACCORDING TO AECMA TECHNICAL REPORT TR4661.
- INSPECTION: MAGNETIC PARTICLE INSPECTION PER ASTM E 1444.
- TECHN. SPEC: LINER MEETS REQUIREMENTS OF EN2755/AS81820 SPECIFICATION.



NMB GmbH
 12-JUN-2012
 ISSUED

No.	NAME	MATERIAL	FINISH	HEAT TREAT	QTY
③	LINER	TFE/N X-1820	—/—	—/—	1
②	RACE	17-4PH CRES AMS5643/EN3161	②	28-37HRC	1
①	BALL	440C CRES AMS5630/EN2030	①	55-62HRC	1



PROPRIETARY INFORMATION FOR **Minebea** (NMB) UNAUTHORIZED REPRODUCTION PROHIBITED

CUSTOMER SPEC. NO. EN2585: 2001

Minebea Rodend-Fastener B/U Rodend MFG Division European Headquarters

UNIT mm SCALE FREE DATE 01. MAR. 1990 DESCRIPTION SPHERICAL BEARING SHEET 1/1

REASON / ECN NO. ENGINEER APPROVED

LENGTH TOL. L≤4 ±0.1 4<L≤16 ±0.2 16<L≤63 ±0.3 63<L≤250 ±0.5 250<L≤1000 ±0.8 DEG. ±0.5°

PART NUMBER MHTxx(V)(PL)-61 DRAWING NO. E90015