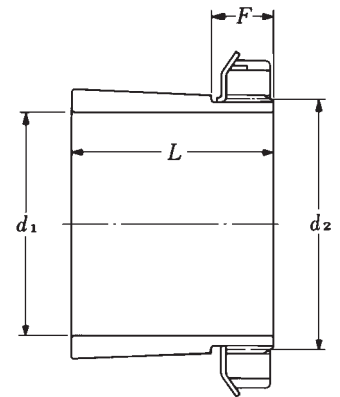


ADAPTERS FOR BEARINGS SERIES 12K,13K,222K,232K,223K

Units: INCHES



Brg. Bore No.	Complete Adapter		Adapter Sleeve No.	Lock-Nut No.	Lock-Washer No.	Nominal Sleeve Dimensions (Inch)				
	Number	Weight (lbs)				Shaft (Bore) Dia. d_1	L	F	Thread Pitch Dia. d_2	Threads ^① Per inch
05	SNW 05	.22	S 05	N 05	W 05	$\frac{3}{8}$	1.269	.560	.9470	32
06	SNW 06	.28	S 06	N 06	W 06	$\frac{15}{16}$	1.353	.622	1.1339	18
07	SNW 07	.35	S 07	N 07	W 07	$1 \frac{3}{16}$	1.459	.654	1.3369	18
08	SNW 08	.41	S 08	N 08	W 08	$1 \frac{5}{16}$	1.504	.662	1.5237	18
09	SNW 09	.62	S 09	N 09	W 09	$1 \frac{7}{16}$	1.584	.662	1.7277	18
10	SNW 10	.73	S 10	N 10	W 10	$1 \frac{11}{16}$	1.765	.724	1.9277	18
11	SNW 11	.80	S 11	N 11	W 11	$1 \frac{15}{16}$	1.845	.729	2.1174	18
12	SNW 12	1.08	S 12	N 12	W 12	$2 \frac{1}{16}$	1.989	.760	2.3204	18
13	SNW 13	1.39	S 13	N 13	W 13	$2 \frac{3}{16}$	2.100	.792	2.5084	18
14	SNW 14	1.90	S 14	N 14	W 14	$2 \frac{5}{16}$	2.274	.792	2.7114	18
15	SNW 15	2.26	S 15	AN 15A	W 15	$2 \frac{7}{16}$	2.296	.895	2.8752	12
16	SNW 16	2.40	S 16	AN 16A	W 16	$2 \frac{11}{16}$	2.376	.895	3.0790	12
17	SNW 17	2.92	S 17	AN 17A	W 17	$2 \frac{15}{16}$	2.486	.926	3.2812	12
18	SNW 18	3.06	S 18	AN 18A	W 18	$3 \frac{3}{16}$	2.646	1.010	3.4682	12
19	SNW 19	3.72	S 19	AN 19A	W 19	$3 \frac{5}{16}$	2.760	1.041	3.6712	12
20	SNW 20	4.38	S 20	AN 20A	W 20	$3 \frac{7}{16}$	2.869	1.073	3.8592	12
21	SNW 21	4.53	S 21	AN 21A	W 21	$3 \frac{11}{16}$	2.987	1.073	4.0618	12
22	SNW 22	5.00	S 22	AN 22A	W 22	$3 \frac{15}{16}$	3.206	1.135	4.2648	12
24	SNW 24	6.66	S 24	AN 24A	W 24	$4 \frac{3}{16}$	3.466	1.166	4.6558	12
26	SNW 26	9.70	S 26	AN 26A	W 26	$4 \frac{7}{16}$	3.762	1.229	5.0458	12
28	SNW 28	10.3	S 28	AN 28A	W 28	$4 \frac{11}{16}$	3.981	1.291	5.4368	12
30	SNW 30	15.8	S 30	AN 30A	W 30	$5 \frac{3}{16}$	4.241	1.354	5.8278	12
32	SNW 32	15.6	S 32	AN 32A	W 32	$5 \frac{7}{16}$	4.578	1.510	6.1953	8
34	SNW 34	19.4	S 34	AN 34A	W 34	$5 \frac{15}{16}$	4.847	1.541	6.5703	8
36	SNW 36	20.5	S 36	AN 36A	W 36	$6 \frac{7}{16}$	5.038	1.573	6.9773	8
38	SNW 38	23.4	S 38	AN 38A	W 38	$6 \frac{15}{16}$	5.261	1.604	7.3833	8
40	SNW 40	30.7	S 40	AN 40A	W 40	$7 \frac{3}{16}$	5.484	1.666	7.7571	8
44	SNW 44	32.3	S 44	N 44	W 44	$7 \frac{15}{16}$	5.901	1.698	8.5378	8
08	SNW 108	.62	S 108	N 08	W 08	$1 \frac{5}{16}$	2.015	.662	1.5237	18
09	SNW 109	.71	S 109	N 09	W 09	$1 \frac{7}{16}$	2.133	.662	1.7277	18
10	SNW 110	.87	S 110	N 10	W 10	$1 \frac{11}{16}$	2.394	.724	1.9277	18
11	SNW 111	.94	S 111	N 11	W 11	$1 \frac{15}{16}$	2.516	.729	2.1174	18
12	SNW 112	1.42	S 112	N 12	W 12	$2 \frac{1}{16}$	2.659	.760	2.3204	18
13	SNW 113	1.74	S 113	N 13	W 13	$2 \frac{3}{16}$	2.771	.792	2.5084	18
14	SNW 114	2.36	S 114	N 14	W 14	$2 \frac{5}{16}$	2.945	.792	2.7114	18
15	SNW 115	2.97	S 115	AN 15A	W 15	$2 \frac{7}{16}$	3.084	.895	2.8752	12
16	SNW 116	3.19	S 116	AN 16A	W 16	$2 \frac{11}{16}$	3.204	.895	3.0790	12
17	SNW 117	3.40	S 117	AN 17A	W 17	$2 \frac{15}{16}$	3.312	.926	3.2812	12
18	SNW 118	3.99	S 118	AN 18A	W 18	$3 \frac{3}{16}$	3.553	1.010	3.4682	12
19	SNW 119	4.60	S 119	AN 19A	W 19	$3 \frac{5}{16}$	3.702	1.041	3.6712	12
20	SNW 120	6.25	S 120	AN 20A	W 20	$3 \frac{7}{16}$	3.971	1.073	3.8592	12
22	SNW 122	6.47	S 122	AN 22A	W 22	$3 \frac{15}{16}$	4.348	1.135	4.2648	12
24	SNW 124	7.82	S 124	AN 24A	W 24	$4 \frac{3}{16}$	4.648	1.166	4.6558	12
26	SNW 126	12.4	S 126	AN 26A	W 26	$4 \frac{7}{16}$	4.982	1.229	5.0458	12
28	SNW 128	13.0	S 128	AN 28A	W 28	$4 \frac{15}{16}$	5.323	1.291	5.4368	12
30	SNW 130	18.0	S 130	AN 30A	W 30	$5 \frac{3}{16}$	5.621	1.354	5.8278	12
32	SNW 132	18.1	S 132	AN 32A	W 32	$5 \frac{7}{16}$	5.920	1.510	6.1953	8
34	SNW 134	21.0	S 134	AN 34A	W 34	$5 \frac{15}{16}$	6.188	1.541	6.5703	8
36	SNW 136	22.4	S 136	AN 36A	W 36	$6 \frac{7}{16}$	6.456	1.573	6.9773	8
38	SNW 138	28.1	S 138	AN 38A	W 38	$6 \frac{15}{16}$	6.758	1.604	7.3833	8
40	SNW 140	35.7	S 140	AN 40A	W 40	$7 \frac{3}{16}$	7.095	1.666	7.7571	8
44	SNW 144	37.0	S 144	N 44	W 44	$7 \frac{15}{16}$	7.287	1.698	8.5378	8



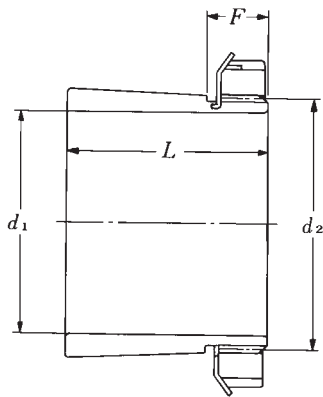
① Threads are derived from the Screw Thread Standards for Federal Services Handbook H-28.

Note: Adapters are supplied complete with Adapter Sleeve, Locknut and Lockwasher.



Units: INCHES

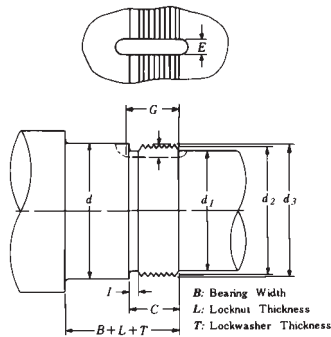
ADAPTERS FOR BEARINGS SERIES 230K, 231K



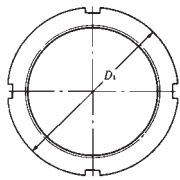
Brg. Bore No.	Complete Adapter		Adapter Sleeve No.	Lock-Nut No.	Lock-washer No.	Nominal Sleeve Dimensions (Inch)				
	Number	Weight (lbs)				Shaft (Bore) Dia. d_1	L	F	Thread Pitch Dia. d_2	Threads Per inch
24	SNW 3024	6.14	S 3024	N 024	W 024	4 3/16	2.947	1.250	4.6558	12
26	SNW 3026	7.50	S 3026	N 026	W 026	4 7/16	3.237	1.313	5.0458	12
28	SNW 3028	8.44	S 3028	N 028	W 028	4 15/16	3.340	1.375	5.4368	12
30	SNW 3030	9.79	S 3030	N 030	W 030	5 3/16	3.492	1.406	5.8278	12
32	SNW 3032	11.8	S 3032	N 032	W 032	5 7/16	3.711	1.468	6.1953	8
34	SNW 3034	13.3	S 3034	N 034	W 034	5 15/16	4.019	1.500	6.5703	8
36	SNW 3036	15.2	S 3036	N 036	W 036	6 7/16	4.337	1.531	6.9773	8
38	SNW 3038	16.7	S 3038	N 038	W 038	6 15/16	4.412	1.594	7.3833	8
40	SNW 3040	19.7	S 3040	N 040	W 040	7 3/16	4.750	1.656	7.7571	8
44	SNW 3044	24.4	S 3044	N 044	W 044	7 15/16	5.130	1.750	8.5378	8
22	SNW 3122	4.25	S 22	N 022	W 022	3 15/16	3.206	1.135	4.2648	12
24	SNW 3124	5.84	S 24	N 024	W 024	4 3/16	3.466	1.166	4.6558	12
26	SNW 3126	8.34	S 26	N 026	W 026	4 7/16	3.762	1.229	5.0458	12
28	SNW 3128	8.85	S 28	N 028	W 028	4 15/16	3.981	1.291	5.4368	12
30	SNW 3130	13.7	S 30	N 030	W 030	5 3/16	4.241	1.354	5.8278	12
32	SNW 3132	13.3	S 32	N 032	W 032	5 7/16	4.578	1.510	6.1953	8
34	SNW 3134	16.1	S 34	N 034	W 034	5 15/16	4.847	1.541	6.5703	8
36	SNW 3136	17.1	S 36	N 036	W 036	6 7/16	5.038	1.573	6.9773	8
38	SNW 3138	19.7	S 38	N 038	W 038	6 15/16	5.261	1.604	7.3833	8
40	SNW 3140	28.4	S 40	N 040	W 040	7 3/16	5.484	1.666	7.7571	8
44	SNW 3144	28.1	S 44	N 044	W 044	7 15/16	5.901	1.698	8.5378	8

① Threads are derived from the Screw Thread Standards for Federal Services Handbook H-28.

Note: Adapters are supplied complete with Adapter Sleeve, Locknut and Lockwasher.



Locknut



Lockwasher



LOCKNUTS AND LOCKWASHERS

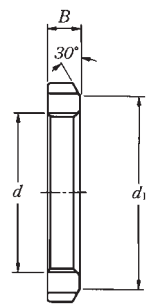
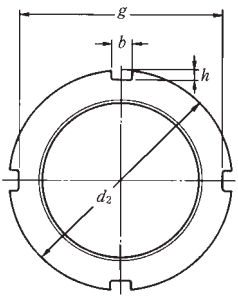
For Bearing with this Bore Number	LOCKNUT NUMBER	LOCKWASHER NUMBER	Shaft Dimensions											Locknut Dimensions		Lockwasher Dimensions		
			d Nominal		d_2 Thread O. D.		d_3 Thread Pitch Diameter		① Threads per inch	d_1 (inch) Extension Diameter Maximum	C (inch)	G (inch)	I (inch)	E (inch)	D_1 (inch)	L (inch)	T (inch)	d_3 (inch)
			(mm)	(inch)	Maximum	Tolerance +0.000	Maximum	Tolerance +0.000										
05	N05	W05	25	.9843	.969	-.0054	.9487	-.0034	32	7/8	15/32	19/32	1/16	3/16	1 9/16	13/32	.050	1.000
06	N06	W06	30	1.1811	1.173	-.0082	1.1369	-.0040	18	1 1/16	15/32	19/32	3/32	3/16	1 3/4	13/32	.050	1.199
07	N07	W07	35	1.3780	1.376	-.0082	1.3399	-.0040	18	1 1/4	1/2	5/8	3/32	3/16	2 1/16	7/16	.050	1.407
08	N08	W08	40	1.5748	1.563	-.0082	1.5269	-.0045	18	1 15/32	17/32	21/32	3/32	5/16	2 1/4	7/16	.058	1.593
09	N09	W09	45	1.7717	1.767	-.0082	1.7309	-.0045	18	1 11/16	17/32	11/16	1/8	5/16	2 17/32	7/16	.058	1 13/16
10	N10	W10	50	1.9685	1.967	-.0082	1.9309	-.0045	18	1 7/8	19/32	3/4	1/8	5/16	2 11/16	1/2	.058	2
11	N11	W11	55	2.1654	2.157	-.0082	2.1209	-.0051	18	2 1/16	19/32	3/4	1/8	5/16	2 31/32	1/2	.063	2 3/16
12	N12	W12	60	2.3622	2.360	-.0082	2.3239	-.0051	18	2 1/4	5/8	25/32	1/8	5/16	3 5/32	17/32	.063	2 13/32
13	N13	W13	65	2.5591	2.548	-.0082	2.5119	-.0051	18	2 7/16	21/32	13/16	1/8	5/16	3 3/8	9/16	.063	2 19/32
14	N14	W14	70	2.7559	2.751	-.0082	2.7149	-.0051	18	2 5/8	21/32	29/32	1/8	5/16	3 5/8	9/16	.063	2 13/16
15	AN15A	W15	75	2.9528	2.933	-.0112	2.8789	-.0054	12	2 25/32	11/16	15/16	9/32	5/16	3 7/8	19/32	.072	3
16	AN16A	W16	80	3.1496	3.137	-.0112	3.0829	-.0059	12	3	11/16	15/16	9/32	3/8	4 5/32	19/32	.072	3 3/16
17	AN17A	W17	85	3.3465	3.340	-.0112	3.2859	-.0074	12	3 3/16	23/32	31/32	9/32	3/8	4 13/32	5/8	.072	3 13/32
18	AN18A	W18	90	3.5433	3.527	-.0112	3.4729	-.0074	12	3 3/8	13/16	1 1/16	5/32	3/8	4 21/32	11/16	.094	3 19/32
19	AN19A	W19	95	3.7402	3.730	-.0112	3.6759	-.0074	12	3 9/16	27/32	1 9/32	9/32	3/8	4 15/16	23/32	.094	3 13/16
20	AN20A	W20	100	3.9370	3.918	-.0112	3.8639	-.0074	12	3 25/32	7/8	1 3/16	5/32	3/8	5 3/16	3/4	.094	4
21	AN21A	W21	105	4.1339	4.122	-.0112	4.0679	-.0083	12	3 15/16	7/8	1 3/16	5/32	3/8	5 7/16	3/4	.094	4 7/32
22	AN22A	W22	110	4.3307	4.325	-.0112	4.2709	-.0083	12	4 3/16	29/32	1 7/32	5/32	3/8	5 23/32	25/32	.125	4 13/32
24	AN24A	W24	120	4.7244	4.716	-.0112	4.6619	-.0083	12	4 9/16	15/16	1 1/4	5/32	3/8	6 1/8	13/16	.125	4 13/16
26	AN26A	W26	130	5.1181	5.106	-.0112	5.0519	-.0083	12	4 15/16	1	1 5/16	5/32	1/2	6 3/4	7/8	.125	5 7/32
28	AN28A	W28	140	5.5118	5.497	-.0112	5.4429	-.0083	12	5 9/16	1 1/16	1 3/8	9/32	5/8	7 3/32	15/16	.125	5 19/32
30	AN30A	W30	150	5.9055	5.888	-.0112	5.8339	-.0083	12	5 23/32	1 1/8	1 1/2	5/32	5/8	7 11/16	31/32	.156	6
32	AN32A	W32	160	6.2992	6.284	-.0152	6.2028	-.0091	8	6 1/8	1 3/16	1 9/16	1/4	5/8	8 1/16	1 1/32	.156	6 13/32
34	AN34A	W34	170	6.6929	6.659	-.0152	6.5778	-.0091	8	6 1/2	1 7/32	1 19/32	1/4	3/4	8 21/32	1 1/16	.156	6 25/32
36	AN36A	W36	180	7.0866	7.066	-.0152	6.9848	-.0091	8	6 29/32	1 1/4	1 5/8	1/4	3/4	9 1/16	1 3/32	.156	7 3/16
38	AN38A	W38	190	7.4803	7.472	-.0152	7.3908	-.0091	8	7 9/16	1 9/32	1 21/32	1/4	3/4	9 15/32	1 1/8	.156	7 19/32
40	AN40A	W40	200	7.8740	7.847	-.0152	7.7658	-.0114	8	7 11/16	1 11/32	1 23/32	1/4	7/8	9 27/32	1 3/16	.156	8
44	N44	W44	220	8.6614	8.628	-.0152	8.5468	-.0121	8	8 5/16	1 3/8	1 9/16	1/4	1 1/16	11	1 1/4	.156	8 45/64
22	N022	W022	110	4.3307	4.325	-.0112	4.2709	-.0083	12	4 3/16	29/32	1 7/32	5/32	3/8	5 5/16	25/32	.125	4 13/32
24	N024	W024	120	4.7244	4.716	-.0112	4.6619	-.0083	12	4 9/16	15/16	1 1/4	5/32	3/8	5 11/16	13/16	.125	4 13/16
26	N026	W026	130	5.1181	5.106	-.0112	5.0519	-.0083	12	4 15/16	1	1 5/16	5/32	1/2	6 1/8	7/8	.125	5 7/32
28	N028	W028	140	5.5118	5.497	-.0112	5.4429	-.0083	12	5 9/16	1 1/16	1 3/8	9/32	5/8	6 1/2	15/16	.125	5 19/32
30	N030	W030	150	5.9055	5.888	-.0112	5.8339	-.0083	12	5 23/32	1 1/8	1 1/2	5/32	5/8	7 1/8	31/32	.125	6
32	N032	W032	160	6.2992	6.284	-.0152	6.2028	-.0091	8	6 1/8	1 3/16	1 9/16	1/4	5/8	7 1/2	1 1/32	.125	6 13/32
34	N034	W034	170	6.6929	6.659	-.0152	6.5778	-.0091	8	6 1/2	1 7/32	1 19/32	1/4	3/4	7 7/8	1 1/16	.125	6 25/32
36	N036	W036	180	7.0866	7.066	-.0152	6.9848	-.0091	8	6 29/32	1 1/4	1 5/8	1/4	3/4	8 1/4	1 3/32	.125	7 3/16
38	N038	W038	190	7.4803	7.472	-.0152	7.3908	-.0091	8	7 9/16	1 9/32	1 21/32	1/4	3/4	8 11/16	1 1/8	.125	7 19/32
40	N040	W040	200	7.8740	7.847	-.0152	7.7658	-.0114	8	7 11/16	1 11/32	1 23/32	1/4	7/8	9 7/16	1 3/16	.125	8
44	N044	W044	220	8.6614	8.628	-.0152	8.5468	-.0121	8	8 5/16	1 3/8	1 9/16	1/4	1 1/16	10 1/4	1 1/4	.125	8 45/64

① Threads are derived from the Screw Thread Standards for Federal services Handbook H-28.
 ② Tolerance: + 1/64 to -0 inch



LOCKNUTS AND LOCKWASHERS

For Bearing with Bore Number	Locknut Number	Lockwasher Number	Thread Size	Threads per mm	Dimensions (mm)						Shaft Diameter (mm)
					d_1	d_2	g	b	h	B	
—	AN00	AW00	M10 X 75	.75	13	18	14	3	2	4	10
—	AN01	AW01	M12 X 1	1.0	17	22	18	3	2	4	12
—	AN02	AW02	M15 X 1	1.0	21	25	21	4	2	5	15
—	AN03	AW03	M17 X 1	1.0	24	28	24	4	2	5	17
04	AN04	AW04	M20 X 1	1.5	26	32	28	4	2	6	20
05	AN05	AW05	M25 X 1.5	1.5	32	38	34	5	2	7	25
06	AN06	AW06	M30 X 1.5	1.5	38	45	41	5	2	7	30
07	AN07	AW07	M35 X 1.5	1.5	44	52	48	5	2	8	35
08	AN08	AW08	M40 X 1.5	1.5	50	58	53	6	2.5	9	40
09	AN09	AW09	M45 X 1.5	1.5	56	65	60	6	2.5	10	45
10	AN10	AW10	M50 X 1.5	2.0	61	70	65	6	2.5	11	50
11	AN11	AW11	M55 X 2	2.0	67	75	69	7	3	11	55
12	AN12	AW12	M60 X 2	2.0	73	80	74	7	3	11	60
13	AN13	AW13	M65 X 2	2.0	79	85	79	7	3	12	65
14	AN14	AW14	M70 X 2	2.0	85	92	85	8	3.5	12	70
15	AN15	AW15	M75 X 2	2.0	90	98	91	8	3.5	13	75
16	AN16	AW16	M80 X 2	2.0	95	105	98	8	3.5	15	80
17	AN17	AW17	M85 X 2	2.0	102	110	103	8	3.5	16	85
18	AN18	AW18	M90 X 2	2.0	108	120	112	10	4	16	90
19	AN19	AW19	M95 X 2	2.0	113	125	117	10	4	17	95
20	AN20	AW20	M100 X 2	2.0	120	130	122	10	4	18	100
21	AN21	AW21	M105 X 2	2.0	126	140	130	12	5	18	105
22	AN22	AW22	M110 X 2	2.0	133	145	135	12	5	19	110
—	AN23	AW23	M115 X 2	2.0	137	150	140	12	5	19	115
24	AN24	AW24	M120 X 2	2.0	138	155	145	12	5	20	120
—	AN25	AW25	M125 X 2	2.0	148	160	150	12	5	21	125
26	AN26	AW26	M130 X 2	2.0	149	165	155	12	5	21	130
—	AN27	AW27	M135 X 2	2.0	160	175	163	14	6	22	135
28	AN28	AW28	M140 X 2	2.0	160	180	168	14	6	22	140
—	AN29	AW29	M145 X 2	2.0	171	190	178	14	6	24	145
30	AN30	AW30	M150 X 2	2.0	171	195	183	14	6	24	150
—	AN31	AW31	M155 X 3	3.0	182	200	186	16	7	25	155
32	AN32	AW32	M160 X 3	3.0	182	210	196	16	7	25	160
—	AN33	AW33	M165 X 3	3.0	193	210	196	16	7	26	165
34	AN34	AW34	M170 X 3	3.0	193	220	206	16	7	26	170
36	AN36	AW36	M180 X 3	3.0	203	230	214	18	8	27	180
38	AN38	AW38	M190 X 3	3.0	214	240	224	18	8	28	190
40	AN40	AW40	M200 X 3	3.0	226	250	234	18	8	29	200
44	AN44	AL44	Tr220 X 4	4.0	250	280	260	20	10	32	220
48	AN48	AL44	Tr240 X 4	4.0	270	300	280	20	10	34	240
52	AN52	AL52	Tr260 X 4	4.0	300	330	306	24	12	36	260
56	AN56	AL52	Tr280 X 4	4.0	320	350	326	24	12	38	280
60	AN60	AL60	Tr300 X 4	4.0	340	380	356	24	12	40	300
64	AN64	AL64	Tr320 X 5	5.0	360	400	376	24	12	42	320
68	AN68	AL68	Tr340 X 5	5.0	400	440	410	28	15	55	340
72	AN72	AL68	Tr360 X 5	5.0	420	460	430	28	15	58	360
76	AN76	AL76	Tr380 X 5	5.0	450	490	454	32	18	60	380
80	AN80	AL80	Tr400 X 5	5.0	470	520	484	32	18	62	400
84	AN84	AL80	Tr420 X 5	5.0	490	540	504	32	18	70	420
88	AN88	AL88	Tr440 X 5	5.0	510	560	520	36	20	70	440
92	AN92	AL88	Tr460 X 5	5.0	540	580	540	36	20	75	460
96	AN96	AL96	Tr480 X 5	5.0	560	620	580	36	20	75	480
/500	AN100	AL100	Tr500 X 5	5.0	580	630	584	40	23	80	800



LOCKNUTS AND LOCKWASHERS

— INCH SIZES —				— METRIC SIZES —			
Locknut Number	Weight (lbs)	Lockwasher Number	Weight (oz)	Locknut Number	Weight (lbs)	Lockwasher Number	Weight (oz)
N05	.12	W05	.16	AN00	.01	AW00	.05
N06	.14	W06	.18	AN01	.02	AW01	.07
N07	.22	W07	.26	AN02	.02	AW02	.09
N08	.24	W08	.39	AN03	.03	AW03	.11
N09	.31	W09	.48	AN04	.04	AW04	.12
N10	.36	W10	.49	AN05	.06	AW05	.23
N11	.44	W11	.59	AN06	.09	AW06	.28
N12	.49	W12	.61	AN07	.12	AW07	.37
N13	.59	W13	.71	AN08	.19	AW08	.43
N14	.67	W14	.81	AN09	.26	AW09	.54
AN15A	.83	W15	1.19	AN10	.33	AW10	.56
AN16A	.96	W16	1.37	AN11	.35	AW11	.69
AN17A	1.10	W17	1.42	AN12	.38	AW12	.89
AN18A	1.37	W18	2.21	AN13	.45	AW13	1.02
AN19A	1.63	W19	2.47	AN14	.53	AW14	1.18
AN20A	1.89	W20	2.76	AN15	.63	AW15	1.26
AN21A	1.99	W21	2.94	AN16	.88	AW16	1.64
AN22A	2.33	W22	4.60	AN17	.99	AW17	1.85
AN24A	2.55	W24	4.90	AN18	1.23	AW18	2.20
AN26A	3.53	W26	6.21	AN19	1.45	AW19	2.36
AN28A	3.92	W28	6.40	AN20	1.54	AW20	2.70
AN30A	4.89	W30	9.71	AN21	1.86	AW21	2.91
AN32A	5.55	W32	9.92	AN22	2.13	AW22	3.32
AN34A	6.93	W34	12.22	AN23	2.23	AW23	3.81
AN36A	7.35	W36	12.87	AN24	2.38	AW24	3.70
AN38A	7.99	W38	13.46	AN25	2.62	AW25	4.16
AN40A	8.86	W40	13.88	AN26	2.76	AW26	3.99
N44	11.85	W44	19.41	AN27	3.42	AW27	5.08
N022	1.62	W022	3.39	AN28	3.44	AW28	5.01
N024	1.82	W024	3.75	AN29	4.41	AW29	5.93
N026	2.21	W026	4.02	AN30	4.48	AW30	5.82
N028	2.50	W028	4.39	AN31	4.87	AW31	7.37
N030	3.42	W030	6.21	AN32	5.71	AW32	7.83
N032	3.89	W032	6.53	AN33	5.36	AW33	8.50
N034	4.25	W034	6.98	AN34	6.17	AW34	8.71
N036	4.50	W036	7.16	AN36	6.77	AW36	9.45
N038	5.02	W038	7.41	AN38	7.47	AW38	9.81
N040	7.10	W040	9.01	AN40	8.14	AW40	10.34
N044	8.20	W044	9.58	AN44	11.47	AL44	.92
				AN48	13.12	AL44	.92
				AN52	17.75	AL52	1.20
				AN56	19.96	AL52	1.20
				AN60	26.02	AL60	1.34
				AN64	28.89	AL64	1.89
				AN68	50.94	AL68	2.35
				AN72	55.35	AL68	2.35
				AN76	68.13	AL76	2.81
				AN80	81.36	AL80	2.89
				AN84	95.92	AL80	2.89
				AN88	99.89	AL88	3.17
				AN92	111.13	AL88	3.17
				AN96	137.15	AL96	3.67
				AN100	139.58	AL100	3.70

