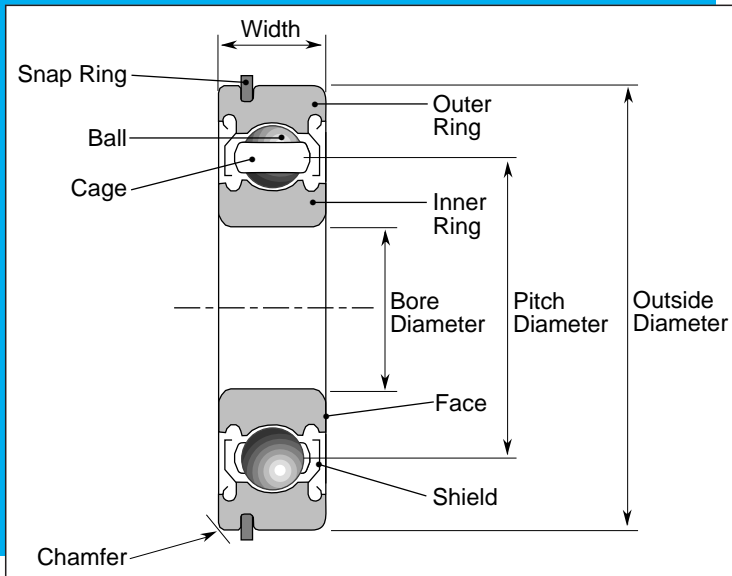


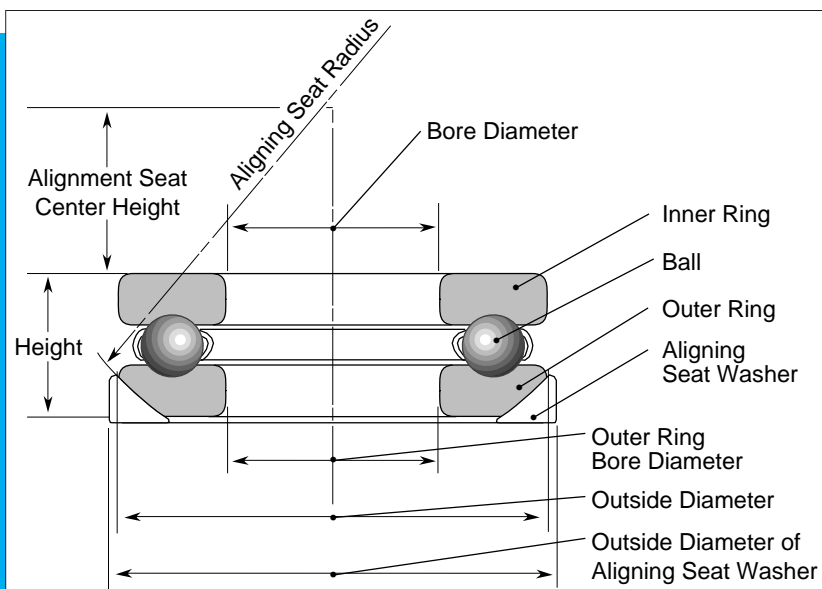
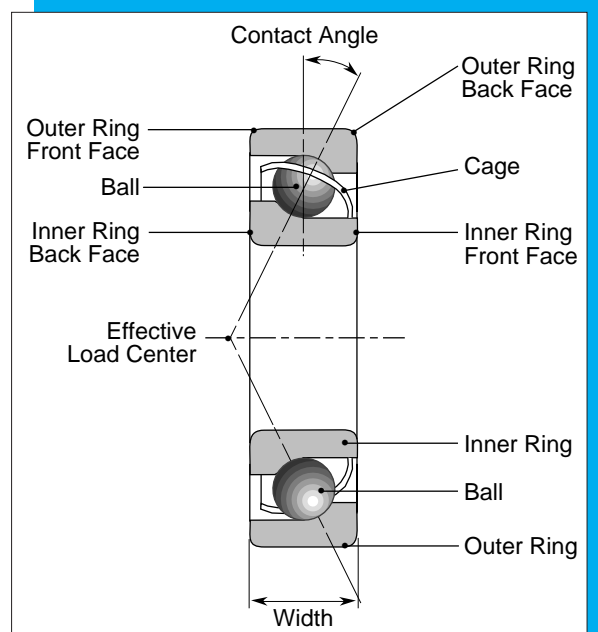


**APPENDIX I  
BEARING  
NOMENCLATURE**



**SINGLE ROW DEEP  
GROOVE BALL  
BEARING**

**SINGLE ROW ANGULAR  
CONTACT BALL  
BEARING**

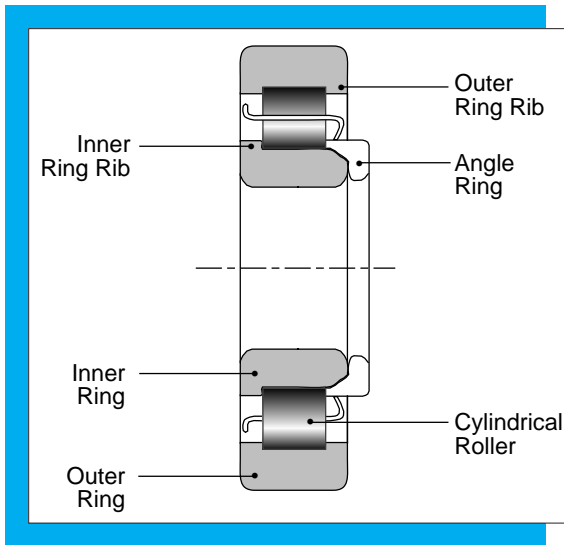
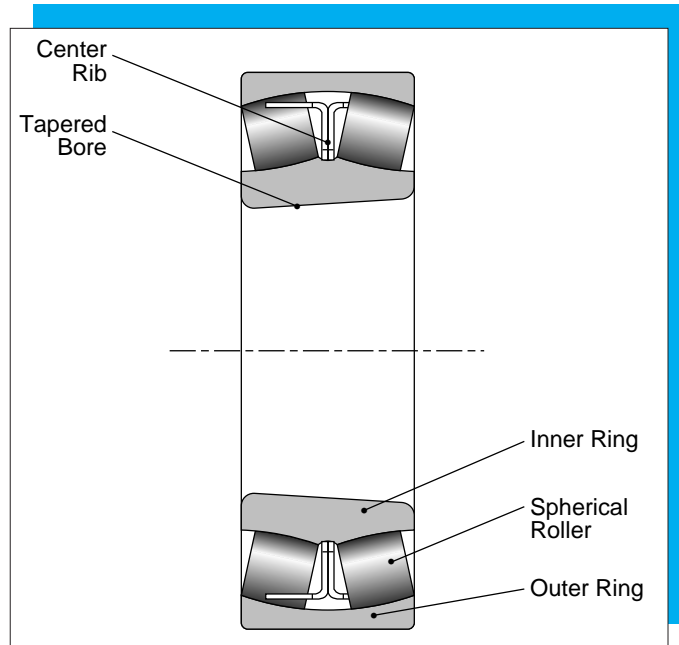


**SINGLE DIRECTION  
THRUST BALL  
BEARING**



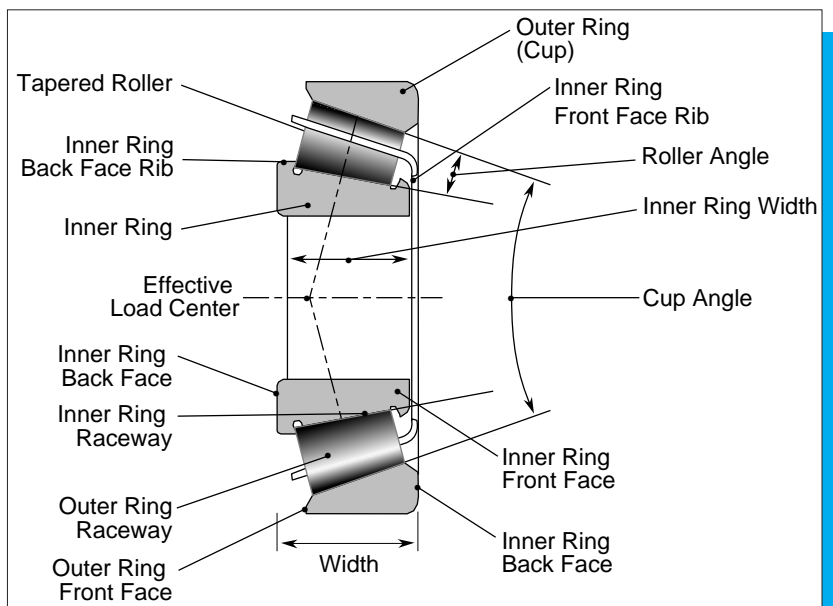
APPENDIX I  
BEARING  
NOMENCLATURE

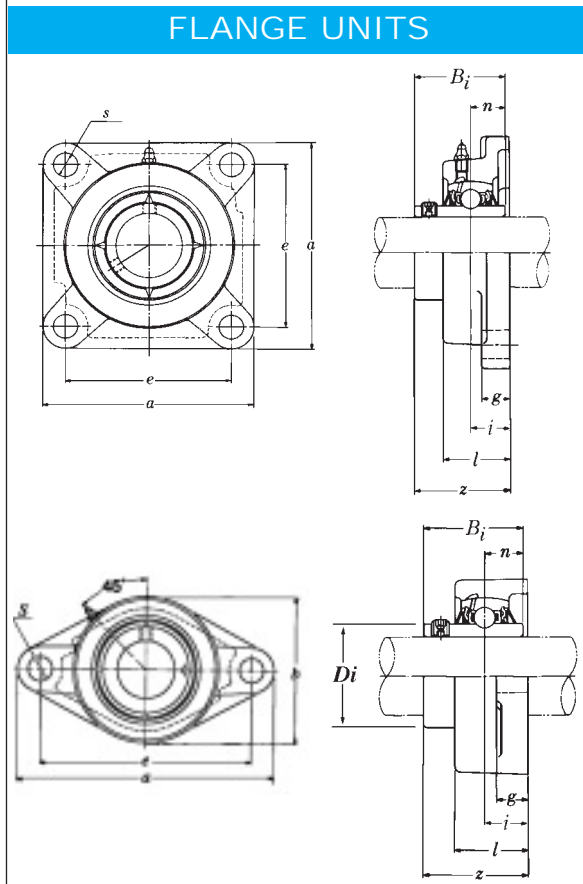
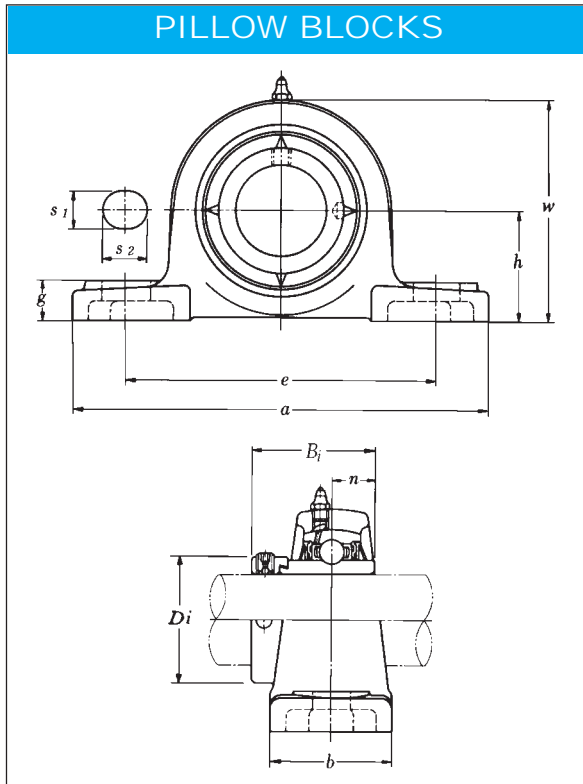
## SPHERICAL ROLLER BEARING



## CYLINDRICAL ROLLER BEARING

## TAPERED ROLLER BEARING





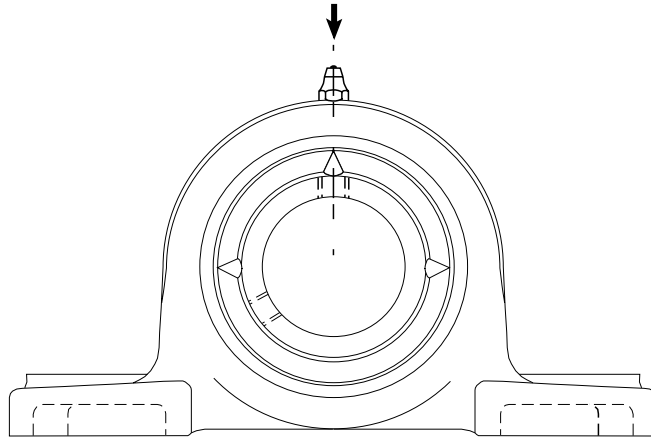
## BEARING UNIT DIMENSION NOMENCLATURE

- $a$  = Total housing length
- $b$  = Total housing width – flange units
- $e$  = Bolt hole center-to-center distance
- $s_1, s_2$  = Bolt hole size, pillow blocks
- $s$  = Bolt hole size, flange units
- $Z$  = Total housing plus bearing depth
- $l$  = Total housing depth – flange units
- $i$  = Bearing ball center to housing rear depth
- $N$  = Bearing ball center to bearing inner ring face
- $B_i$  = Total bearing unit depth – flange units
- $g$  = Flange depth and bolt hole depth
- $w$  = Total bearing unit height – pillow blocks
- $h$  = Bearing unit base to bearing bore center (Center Height) Pillow Blocks

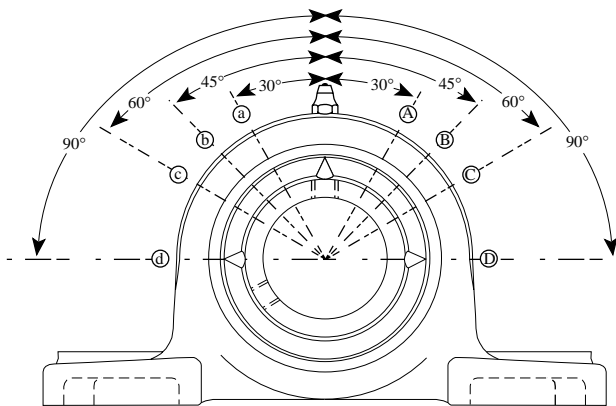


APPENDIX I  
BEARING  
NOMENCLATURE

# STANDARD GREASE FITTINGS



# QUASI-STANDARD GREASE FITTINGS



LOCATION OF GREASE FITTING			
Position	Direction	Rotation	Suffix
A	*Clockwise	30°	(10)
B	Clockwise	45°	(11)
C	Clockwise	60°	(12)
D	Clockwise	90°	(13)
a	**Counterclockwise	30°	(14)
b	Counterclockwise	45°	(15)
c	Counterclockwise	60°	(16)
d	Counterclockwise	90°	(17)

\* \*\* Facing NTN Brand Marking on the housing.

Example: UCP205D1 (11) grease fitting on the location capital "B."