

Standard Screw Lengths	PART NUMBERS		
	RH	LH	RHSS
2 FT.	SRT9420	SRT8528	SRT6536
4 FT.	SRT7538	SRT8532	SRT6540

Custom cut lengths available up to 12'. For longer lengths contact Customer Service.

## 0375-0125 SRT

LEAD ACCURACY:  $\pm 0.004$  in./ft.

Single Start

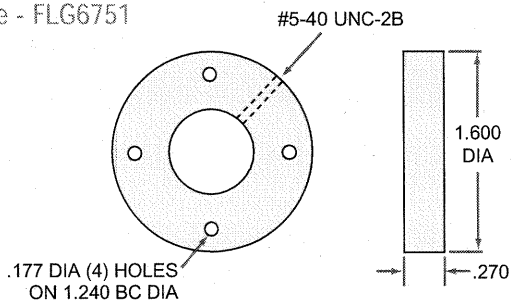
- 0.375** Ball Circle Diameter
- 0.125** Lead
- 0.300** Root Diameter
- 0.0625** Nominal Ball Diameter
- 0.31** Screw Weight (lbs./ft.)

SBN Single Circuit Ball Nut				60 ball bearings total per nut
PRODUCT SPECIFICATIONS	RH	LH	RHSS	
Dynamic Load (lbs.)	136	136	24	
Static Load (lbs.)	1,415	1,415	255	
Torque to Raise 1 lb. (in.-lb.)	.022	.022	.022	
Nut Weight (lbs.)	.13	.13	.13	
Ball Nut Number	SBN9574	SBN9576	SBN9578	
Flange Part Number	FLG6751	FLG6751	-	
Wiper Kit Part Number	-	-	-	

SBN Double Circuit Ball Nut				60 ball bearings per circuit - 120 total per nut
PRODUCT SPECIFICATIONS	RH	LH	RHSS	
Dynamic Load (lbs.)	272	272	50	
Static Load (lbs.)	2,830	2,830	509	
Torque to Raise 1 lb. (in.-lb.)	.022	.022	.022	
Nut Weight (lbs.)	.21	.21	.21	
Ball Nut Number	SBN7502	SBN8282	SBN7643	
Flange Part Number	FLG6751	FLG6751	-	
Wiper Kit Part Number	-	-	-	

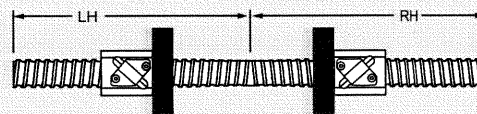
SEL Preload Ball Nut				60 ball bearings per circuit - 120 total per nut
PRODUCT SPECIFICATIONS	RH	LH	RHSS	
Dynamic Load (lbs.)	136	-	-	
Static Load (lbs.)	1,415	-	-	
Torque to Raise 1 lb. (in.-lb.)	.022	-	-	
Preload (lbs.)	10	-	-	
Nut Weight (lbs.)	.21	-	-	
Ball Nut Number	SEL0375	-	-	
Flange Part Number	FLG6751	-	-	
Wiper Kit Part Number	-	-	-	

Flange - FLG6751



### TWIN-LEAD SCREW

Single piece twin-lead screws offer opposing motion through a single drive system.



See page 146 for complete product details.

### LUBRICANT

Prolong ball screw and nut performance with this special lubricant.  
See page 95 for complete product details.

# 0631-0200 SRT

LEAD ACCURACY: ±0.004 in./ft.

Single Start

- 0.631** Ball Circle Diameter
- 0.200** Lead
- 0.500** Root Diameter
- 0.125** Nominal Ball Diameter
- 0.82** Screw Weight (lbs./ft.)

Standard Screw Lengths	PART NUMBERS		
	RH	LH	RHSS
2 FT.	SRT9392	SRT9562	SRT5359
4 FT.	SRT9987	SRT5092	SRT5648
6 FT.	SRT7540	SRT7541	SRT5378

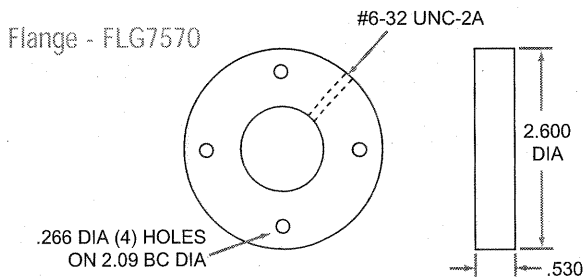
Custom cut lengths available up to 24' for alloy, up to 12' for stainless.  
For longer lengths contact Customer Service.

INCH BALL SCREW AND NUT TECHNICAL DATA

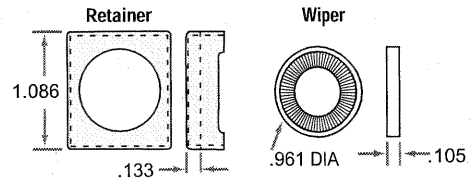
SBN Single Circuit Ball Nut				68 ball bearings total per nut	
PRODUCT SPECIFICATIONS	RH	LH	RHSS		
Dynamic Load (lbs.)	815	815	-		
Static Load (lbs.)	6,384	6,384	-		
Torque to Raise 1 lb. (in.-lb.)	.035	.035	-		
Nut Weight (lbs.)	.27	.27	-		
Ball Nut Number	SBN0827	SBN0828	-		
Flange Part Number	FLG7570	FLG7570	-		
Wiper Kit Part Number	WKB2647	WKB2647	-		

SBN Single Circuit Ball Nut				68 ball bearings total per nut	
PRODUCT SPECIFICATIONS	RH	LH	RHSS		
Dynamic Load (lbs.)	-	-	140		
Static Load (lbs.)	-	-	1,149		
Torque to Raise 1 lb. (in.-lb.)	-	-	.035		
Nut Weight (lbs.)	-	-	.27		
Ball Nut Number	-	-	SBN7645		
Flange Part Number	-	-	-		
Wiper Kit Part Number	-	-	-		

SBN Single Circuit Ball Nut				68 ball bearings total per nut	
PRODUCT SPECIFICATIONS	RH	LH	RHSS		
Dynamic Load (lbs.)	815	-	-		
Static Load (lbs.)	6,384	-	-		
Torque to Raise 1 lb. (in.-lb.)	.035	-	-		
Nut Weight (lbs.)	.27	-	-		
Ball Nut Number	SBN10325	-	-		
Flange Part Number	FLG7570	-	-		
Wiper Kit Part Number	-	-	-		



Brush  
Wiper Kit -  
WKB2647  
2 wipers and  
1 retainer



Standard Screw Lengths	PART NUMBERS		
	RH	LH	RHSS
4 FT.	SRT5005	SRT5499	SRT6668
8 FT.	SRT5013	SRT5507	SRT6676
12 FT.	SRT5021	SRT5515	SRT6684
16 FT.	SRT0426	SRT0428	-

Custom cut lengths available up to 24' for alloy, up to 12' for stainless.  
For longer lengths contact Customer Service.

## 1000-0250 SRT

LEAD ACCURACY: ±0.004 in./ft.

Single Start

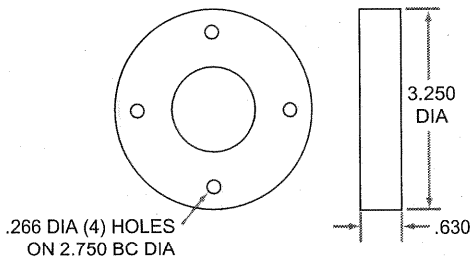
- 1.000** Ball Circle Diameter
- 0.250** Lead
- 0.820** Root Diameter
- 0.156** Nominal Ball Diameter
- 2.2** Screw Weight (lbs./ft.)

SBN Single Circuit Ball Nut				86 ball bearings total per nut
PRODUCT SPECIFICATIONS	RH	LH	RHSS	
Dynamic Load (lbs.)	1,612	1,612	290	
Static Load (lbs.)	13,913	13,913	2,504	
Torque to Raise 1 lb. (in.-lb.)	.044	.044	.044	
Nut Weight (lbs.)	.8	.8	.8	
Ball Nut Number	SBN7508	SBN7535	SBN7646*	
Flange Part Number	FLG7571	FLG7571	FLG7571	
Wiper Kit Part Number	WKB2649	WKB2649	WKB2649	
* Stainless nut does not have rounded corners				

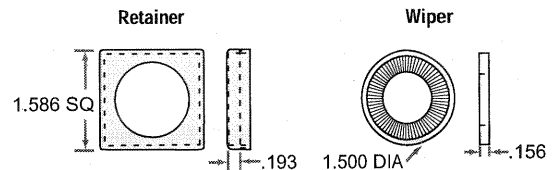
SBN Double Circuit Ball Nut				86 ball bearings per circuit - 172 total per nut
PRODUCT SPECIFICATIONS	RH	LH	RHSS	
Dynamic Load (lbs.)	3,224	-	-	
Static Load (lbs.)	27,826	-	-	
Torque to Raise 1 lb. (in.-lb.)	.044	-	-	
Nut Weight (lbs.)	1.2	-	-	
Ball Nut Number	SBN0348	-	-	
Flange Part Number	FLG7571	-	-	
Wiper Kit Part Number	WKB2649	-	-	

SBN Double Circuit Flanged Ball Nut				86 ball bearings per circuit - 172 total per nut
PRODUCT SPECIFICATIONS	RH	LH	RHSS	
Dynamic Load (lbs.)	3,224	3,224	-	
Static Load (lbs.)	27,826	27,826	-	
Torque to Raise 1 lb. (in.-lb.)	.044	.044	-	
Nut Weight (lbs.)	1.5	1.5	-	
Ball Nut Number	SBN8278	SBN8284	-	
Flange	INTEGRAL	INTEGRAL	-	
Wiper Kit Part Number	WKB2651	WKB2651	-	

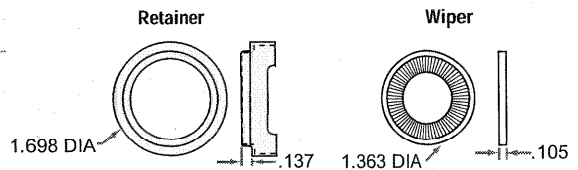
Flange - FLG7571



Brush Wiper Kit - WKB2649  
2 wipers and 1 retainer



Brush Wiper Kit - WKB2651  
2 wipers and 1 retainer



INCH BALL SCREW AND NUT TECHNICAL DATA