

Corrosion Resistant Material Specifications



All Stainless Steel Units**

Example: SSUCP205-16

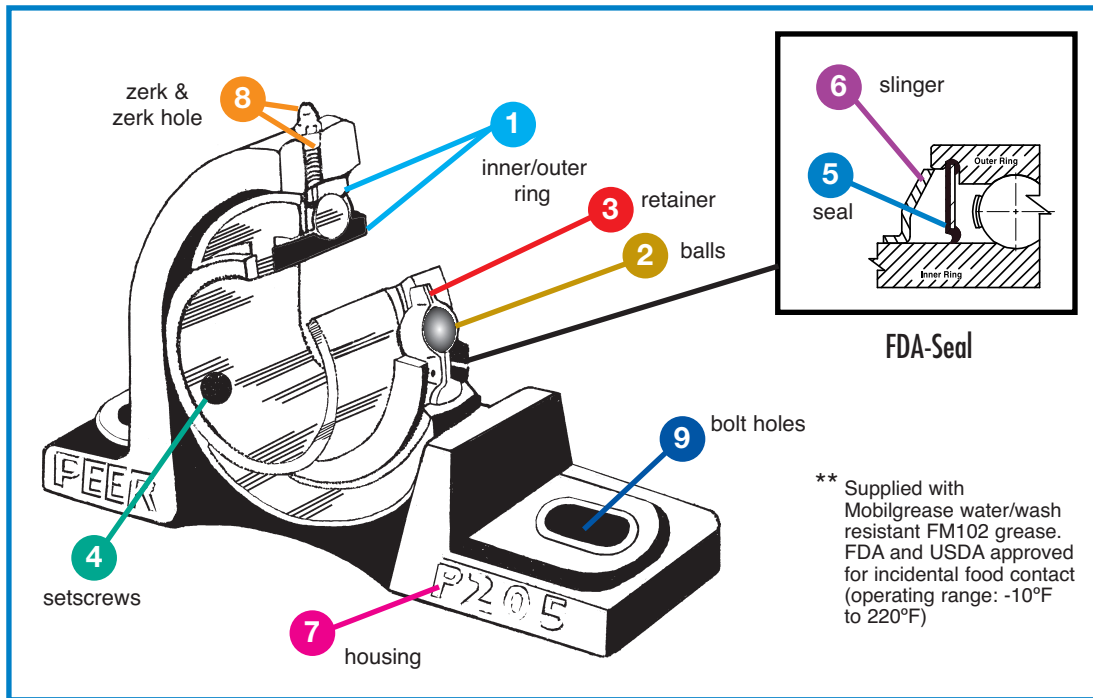
1. Stainless steel AISI 440C
2. Stainless steel AISI 440C
3. Stainless steel AISI 302
4. Stainless steel AISI 302
5. FDA approved silicone rubber (-80F° to 400F°)
6. Stainless steel AISI 302
7. Solid base stainless steel AISI 304
8. Stainless steel AISI 304

Thermoplastic Housings**

With Stainless Steel Bearings

Example: SUCP205-16-PBT

1. Stainless steel AISI 440C
2. Stainless steel AISI 440C
3. Stainless steel AISI 302
4. Stainless steel AISI 302
5. FDA approved silicone rubber (-80F° to 400F°)
6. Stainless steel AISI 302
7. G.E. Valox® 420 glass filled PBT (thermoplastic) solid base
8. Stainless steel zerk and stainless steel lined zerk hole for added strength
9. Stainless steel bolt bushing for added strength



Thermoplastic Housings**

With Zinc Chromate Bearings

Example: ZUCP205-16-PBT

1. Zinc chromate plated (4-6um thick) 52100 steel
2. Stainless steel AISI 440C
3. Stainless steel AISI 302
4. Stainless steel AISI 302
5. FDA approved silicone rubber (-80F° to 400F°)
6. Stainless steel AISI 302
7. G.E. Valox® 420 glass filled PBT (thermoplastic) solid base
8. Stainless steel zerk and stainless steel lined zerk hole for added strength
9. Stainless steel bolt bushing for added strength

Electroless Nickel Plated Housings

With Black Oxide Bearings

Example: UCP205-16-BENP

1. Black oxide plated 52100 steel
2. 52100 steel-grade 10
3. Stamped steel C1010
4. Black oxide plated steel
5. Buna-N rubber bonded to steel shroud
6. Black oxide plated steel
7. Electroless nickel (.001" thick) plated over cast or ductile iron
8. Clear zinc plated steel zerk

Grease: Shell Alvania RL2

Wash Down Units