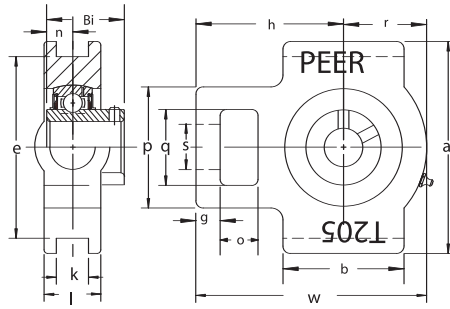
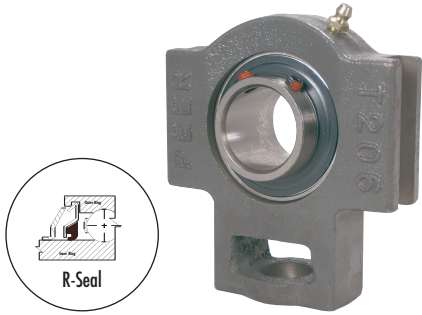


# Take Up Units

## UCT200 Series Set Screw Locking



- Standard duty, high-grade cast iron
- Slot width must be specified when ordering
- Wide inner ring bearing
- Relubricatable unit with anti-rotation pin
- Standard seal: R-Seal

Triple lip seal and other options:  
See page 83

Unit No.	Shaft Diam.	Dimensions <sup>in</sup> <sub>mm</sub>															Bearing No.	Housing No.	
		o	g	p	q	s	b	K	e	a	w	j	l	r	h	Bi			n
UCT201 -8 UCT201 -12mm UCT202 -9 UCT202 -10 UCT202 -15mm UCT203 -11 UCT203 -17mm	1/2 12mm 9/16 5/8 15mm 11/16 17mm	5/8 15.9	13/32 10.3	2 50.8	1 1/4 31.8	3/4 19.1	2 50.8	17/32 13.5	3 76.2	3 1/2 88.9	3 23/32 94.4	1 1/4 31.8	13/16 20.6	1 5/16 33.3	2 13/32 61.1	1.220 31.00	0.500 12.70	UC201 -8 UC201 -12mm UC202 -9 UC202 -10 UC202 -15mm UC203 -11 UC203 -17mm	T-204-H
UCT204 -12 UCT204 -13 UCT204 -20mm	3/4 13/16 20mm	5/8 15.9	13/32 10.3	2 50.8	1 1/4 31.8	3/4 19.1	2 50.8	17/32 13.5	3 76.2	3 1/2 88.9	3 23/32 94.4	1 1/4 31.8	13/16 20.6	1 5/16 33.3	2 13/32 61.1	1.220 31.00	0.500 12.70	UC204 -12 UC204 -13 UC204 -20mm	T-204-H
UCT205 -13 UCT205 -14 UCT205 -15 UCT205 -16 UCT205 -25mm	13/16 7/8 15/16 25mm	5/8 15.9	13/32 10.3	2 50.8	1 1/4 31.8	3/4 19.1	2 50.8	17/32 13.5	3 76.2	3 1/2 88.9	3 13/16 96.8	1 1/4 31.8	15/16 23.8	1 3/8 34.9	2 7/16 61.9	1.339 34.00	0.563 14.30	UC205 -13 UC205 -14 UC205 -15 UC205 -16 UC205 -25mm	T-205-H
UCT206 -17 UCT206 -18 UCT206 -19 UCT206 -20 UCT206 -30mm	1 1/16 1 1/8 1 3/16 1 1/4(s) 30mm	5/8 15.9	13/32 10.3	2 7/32 56.4	1 15/32 37.3	55/64 21.8	2 1/4 57.2	17/32 13.5	3 1/2 88.9	4 1/32 102.4	4 7/16 112.8	1 15/32 37.3	1 3/32 27.8	1 11/16 42.9	2 3/4 69.9	1.500 38.10	0.626 15.90	UC206 -17 UC206 -18 UC206 -19 UC206 -20 UC206 -30mm	T-206-H
UCT207 -20 UCT207 -21 UCT207 -22 UCT207 -23 UCT207 -35mm	1 1/4 1 5/16 1 3/8 1 7/16 35mm	5/8 15.9	1/2 12.7	2 17/32 64.3	1 15/32 37.3	55/64 21.8	2 17/32 64.3	17/32 13.5	3 1/2 88.9	4 1/32 102.4	5 1/16 128.8	1 15/32 37.3	1 3/16 30.2	2 51.0	3 1/16 77.8	1.689 42.90	0.689 17.50	UC207 -20 UC207 -21 UC207 -22 UC207 -23 UC207 -35mm	T-207-H
UCT208 -24 UCT208 -25 UCT208 -40mm	1 1/2 1 9/16 40mm	3/4 19.1	5/8 15.9	3 9/32 83.3	1 15/16 49.2	1 9/64 29.0	3 9/32 83.3	11/16 17.5	4 1/64 102.0	4 1/2 114.3	5 11/16 144.5	1 15/16 49.2	1 5/16 33.3	2 27/32 56.4	3 15/32 88.1	1.937 49.20	0.748 19.00	UC208 -24 UC208 -25 UC208 -40mm	T-208-H
UCT209 -26 UCT209 -27 UCT209 -28 UCT209 -45mm	1 5/8 1 11/16 1 3/4 45mm	3/4 19.1	5/8 15.9	3 9/32 83.3	1 15/16 49.2	1 9/64 29.0	3 9/32 83.3	11/16 17.5	4 1/64 102.0	4 19/32 116.7	5 11/16 144.5	1 15/16 49.2	1 3/8 34.9	2 1/4 57.2	3 7/16 87.3	1.937 49.20	0.748 19.00	UC209 -26 UC209 -27 UC209 -28 UC209 -45mm	T-209-H
UCT210 -29 UCT210 -30 UCT210 -31 UCT210 -32 UCT210 -50mm	1 13/16 1 7/8 1 15/16 2(s) 50mm	3/4 19.1	5/8 15.9	3 9/32 83.3	1 15/16 49.2	1 9/64 29.0	3 3/8 85.7	11/16 17.5	4 1/64 102.0	4 19/32 116.7	5 27/32 148.4	1 15/16 49.2	1 15/32 37.3	2 5/16 58.7	3 17/32 89.7	2.031 51.60	0.748 19.00	UC210 -29 UC210 -30 UC210 -31 UC210 -32 UC210 -50mm	T-210-H
UCT211 -32 UCT211 -33 UCT211 -34 UCT211 -35 UCT211 -55mm	2 2 1/16 2 1/8 2 3/16 55mm	1 25.4	3/4 19.1	4 1/32 102.4	2 17/32 64.3	1 3/8 34.9	3 3/4 95.3	.866 22.0	5 1/8 130.2	5 3/4 146.1	6 3/4 171.5	2 17/32 64.3	1 1/2 38.1	2 9/16 65.1	4 3/16 106.4	2.189 55.60	0.874 22.20	UC211 -32 UC211 -33 UC211 -34 UC211 -35 UC211 -55mm	T-211-H
UCT212 -36 UCT212 -37 UCT212 -38 UCT212 -39 UCT212 -60mm	2 1/4 2 5/16 2 3/8 2 7/16 60mm	1 1/4 31.8	3/4 19.1	4 1/32 102.4	2 17/32 64.3	1 3/8 34.9	4 1/32 102.4	.866 22.0	5 1/8 130.2	5 3/4 146.1	7 5/8 193.7	2 17/32 64.3	1 21/32 42.1	2 15/16 74.6	4 11/16 119.1	2.563 65.10	1.000 25.40	UC212 -36 UC212 -37 UC212 -38 UC212 -39 UC212 -60mm	T-212-H
UCT213 -40 UCT213 -41 UCT213 -65mm	2 1/2 2 9/16 65mm	1 1/4 31.8	13/16 20.6	4 3/8 111.1	2 3/4 69.9	1 39/64 40.9	4 3/4 120.7	17/16 27.0	5 15/16 150.8	6 9/16 166.7	8 27/32 224.6	2 3/4 69.9	1 23/32 43.7	3 7/16 87.3	5 13/32 137.3	2.563 65.10	1.000 25.40	UC213 -40 UC213 -41 UC213 -65mm	T-213-H
UCT214 -42 UCT214 -43 UCT214 -44 UCT214 -70mm	2 5/8 2 11/16 2 3/4 70mm	1 1/4 31.8	13/16 20.6	4 3/8 111.1	2 3/4 69.9	1 39/64 40.9	4 3/4 120.7	17/16 27.0	5 15/16 150.8	6 9/16 166.7	8 27/32 224.6	2 3/4 69.9	1 13/16 46.0	3 7/16 87.3	5 13/32 137.3	2.937 74.60	1.189 30.20	UC214 -42 UC214 -43 UC214 -44 UC214 -70mm	T-214-H
UCT215 -45 UCT215 -46 UCT215 -47 UCT215 -48 UCT215 -75mm	2 13/16 2 7/8 2 15/16 3 75mm	1 1/4 31.8	13/16 20.6	4 3/8 111.1	2 3/4 69.9	1 39/64 40.9	4 3/4 120.7	17/16 27.0	5 15/16 150.8	6 9/16 166.7	9 1/8 231.8	2 3/4 69.9	1 7/8 47.6	3 5/8 92.1	5 1/2 139.7	3.063 77.80	1.311 33.30	UC215 -45 UC215 -46 UC215 -47 UC215 -48 UC215 -75mm	T-215-H
UCT216 -50 UCT216 -80mm	3 1/8 80mm	1 1/4 31.8	13/16 20.6	4 3/8 111.1	2 3/4 69.9	1 39/64 40.9	4 3/4 120.7	17/16 27.0	6 1/2 165.1	7 1/4 184.2	9 1/4 235.0	2 3/4 69.9	2 50.8	3 3/4 95.3	5 1/2 139.7	3.252 82.60	1.311 33.30	UC216 -50 UC216 -80mm	T-216-H

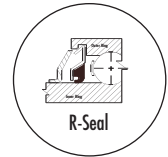
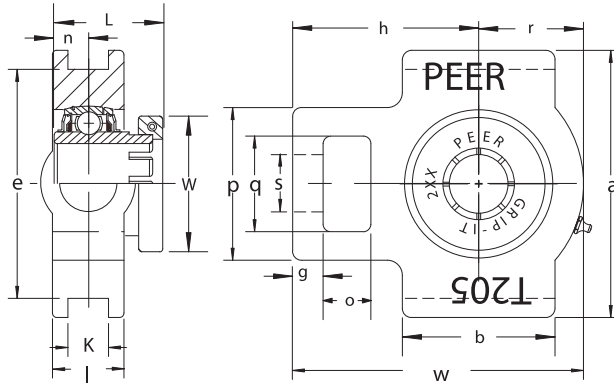
1. T series housings can also be combined with the following insert bearings: HC, FH, FHS or GR: Example HCT205-16-17/32 or FHT205-16-17/32
2. Slot width ('K' dimension) can be made to your specification upon request. See page 129 for suggested options.
3. Specify slot width when ordering the complete unit: Example UCT205-17-17/32
4. Specify slot width when ordering the housing only: Example: T-205-H-17/32

# Take Up Units GRT200 Series GRIP-IT 360 Degree Locking



- Standard duty, high-grade cast iron
- Slot width must be specified when ordering
- Wide inner ring bearing
- Relubricatable unit with anti-rotation pin
- Black oxide plated inner and outer rings
- Standard seal: R-Seal

Triple lip seal and other options:  
See page 83



Unit No.	Shaft Diam.	Dimensions <sup>in</sup> / <sub>mm</sub>																	Bearing No.	Housing No.
		o	g	p	q	s	b	K	e	a	w	j	l	r	h	L	n	W		
GRT204 -12 GRT204 -13 GRT204 -20mm	3/4 13/16 20mm	5/8 15.9	13/32 10.3	2 50.8	1 1/4 31.8	3/4 19.1	2 50.8	17/32 13.5	3 76.2	3 1/2 88.9	3 23/32 94.4	1 1/4 31.8	13/16 20.6	1 5/16 33.3	2 13/32 61.1	1.374 34.90	0.500 12.70	1.76 44.60	GR204 -12 GR204 -13 GR204 -20mm	T-204-H
GRT205 -13 GRT205 -14 GRT205 -15 GRT205 -16 GRT205 -25mm	13/16 7/8 15/16 25mm	5/8 15.9	13/32 10.3	2 50.8	1 1/4 31.8	3/4 19.1	2 50.8	17/32 13.5	3 76.2	3 1/2 88.9	3 13/16 96.8	1 1/4 31.8	15/16 23.8	1 3/8 34.9	2 7/16 61.9	1.512 38.40	0.563 14.30	1.94 49.20	GR205 -13 GR205 -14 GR205 -15 GR205 -16 GR205 -25mm	T-205-H
GRT206 -17 GRT206 -18 GRT206 -19 GRT206 -20 GRT206 -30mm	1 1/16 1 1/8 1 3/8 1 1/4(s) 30mm	5/8 15.9	13/32 10.3	2 7/32 56.4	1 15/32 37.3	55/64 21.8	2 1/4 57.2	17/32 13.5	3 1/2 88.9	4 1/32 102.4	4 7/16 112.8	1 15/32 37.3	1 3/32 27.8	1 11/16 42.9	2 3/4 69.9	1.650 41.90	0.626 15.90	2.19 55.50	GR206 -17 GR206 -18 GR206 -19 GR206 -20 GR206 -30mm	T-206-H
GRT207 -20 GRT207 -21 GRT207 -22 GRT207 -23 GRT207 -35mm	1 1/4 1 5/16 1 3/8 1 7/16 35mm	5/8 15.9	1/2 12.7	2 17/32 64.3	1 15/32 37.3	55/64 21.8	2 17/32 64.3	17/32 13.5	3 1/2 88.9	4 1/32 102.4	5 1/16 128.8	1 15/32 37.3	1 3/16 30.2	2 51.0	3 1/16 77.8	1.870 47.50	0.689 17.50	2.57 65.40	GR207 -20 GR207 -21 GR207 -22 GR207 -23 GR207 -35mm	T-207-H
GRT208 -24 GRT208 -25 GRT208 -40mm	1 1/2 1 9/16 40mm	3/4 19.1	5/8 15.9	3 9/32 83.3	1 15/16 49.2	1 9/64 29.0	3 9/32 83.3	11/16 17.5	4 1/64 102.0	4 1/2 114.3	5 11/16 144.5	1 15/16 49.2	1 5/16 33.3	2 27/32 56.4	3 15/32 88.1	2.114 53.70	0.748 19.00	2.69 68.40	GR208 -24 GR208 -25 GR208 -40mm	T-208-H
GRT209 -26 GRT209 -27 GRT209 -28 GRT209 -45mm	1 5/8 1 11/16 1 3/4 45mm	3/4 19.1	5/8 15.9	3 9/32 83.3	1 15/16 49.2	1 9/64 29.0	3 9/32 83.3	11/16 17.5	4 1/64 102.0	4 19/32 116.7	5 11/16 144.5	1 15/16 49.2	1 3/8 34.9	2 1/4 57.2	3 7/16 87.3	2.122 53.90	0.748 19.00	2.93 74.50	GR209 -26 GR209 -27 GR209 -28 GR209 -45mm	T-209-H
GRT210 -29 GRT210 -30 GRT210 -31 GRT210 -32 GRT210 -50mm	1 13/16 1 7/8 1 15/16 2(s) 50mm	3/4 19.1	5/8 15.9	3 9/32 83.3	1 15/16 49.2	1 9/64 29.0	3 3/8 85.7	11/16 17.5	4 1/64 102.0	4 19/32 116.7	5 27/32 148.4	1 15/16 49.2	1 15/32 37.3	2 5/16 58.7	3 17/32 89.7	2.268 57.60	0.748 19.00	3.39 86.00	GR210 -29 GR210 -30 GR210 -31 GR210 -32 GR210 -50mm	T-210-H
GRT211 -32 GRT211 -33 GRT211 -34 GRT211 -35 GRT211 -55mm	2 2 1/16 2 1/8 2 3/16 55mm	1 25.4	3/4 19.1	4 1/32 102.4	2 17/32 64.3	1 3/8 34.9	3 3/4 95.3	.866 22.0	5 1/8 130.2	5 3/4 146.1	6 3/4 171.5	2 17/32 64.3	1 1/2 38.1	2 9/16 65.1	4 3/16 106.4	2.429 61.70	0.874 22.20	3.50 89.00	GR211 -32 GR211 -33 GR211 -34 GR211 -35 GR211 -55mm	T-211-H
GRT212 -36 GRT212 -37 GRT212 -38 GRT212 -39 GRT212 -60mm	2 1/4 2 5/16 2 3/8 2 7/16 60mm	1 1/4 31.8	3/4 19.1	4 1/32 102.4	2 17/32 64.3	1 3/8 34.9	4 1/32 102.4	.866 22.0	5 1/8 130.2	5 3/4 146.1	7 5/8 193.7	2 17/32 64.3	1 21/32 42.1	2 15/16 74.6	4 11/16 119.1	2.846 72.30	1.000 25.40	4.06 103.00	GR212 -36 GR212 -37 GR212 -38 GR212 -39 GR212 -60mm	T-212-H
GRT213 -40 GRT213 -41 GRT213 -65mm	2 1/2 2 9/16 65mm	1 1/4 31.8	13/16 20.6	4 3/8 111.1	2 3/4 69.9	1 39/64 40.9	4 3/4 120.7	17/16 27.0	5 15/16 150.8	6 9/16 166.7	8 27/32 224.6	2 3/4 69.9	1 23/32 43.7	3 7/16 87.3	5 13/32 137.3	2.846 72.30	1.000 25.40	4.11 104.50	GR213 -40 GR213 -41 GR213 -65mm	T-213-H
GRT214 -42 GRT214 -43 GRT214 -44 GRT214 -70mm	2 5/8 2 11/16 2 3/4 70mm	1 1/4 31.8	13/16 20.6	4 3/8 111.1	2 3/4 69.9	1 39/64 40.9	4 3/4 120.7	17/16 27.0	5 15/16 150.8	6 9/16 166.7	8 27/32 224.6	2 3/4 69.9	1 13/16 46.0	3 7/16 87.3	5 13/32 137.3	3.220 81.80	1.189 30.20	4.39 111.50	GR214 -42 GR214 -43 GR214 -44 GR214 -70mm	T-214-H
GRT215 -45 GRT215 -46 GRT215 -47 GRT215 -48 GRT215 -75mm	2 13/16 2 7/8 2 15/16 3 75mm	1 1/4 31.8	13/16 20.6	4 3/8 111.1	2 3/4 69.9	1 39/64 40.9	4 3/4 120.7	17/16 27.0	5 15/16 150.8	6 9/16 166.7	9 1/8 231.8	2 3/4 69.9	1 7/8 47.6	3 5/8 92.1	5 1/2 139.7	3.358 85.30	1.311 33.30	4.65 118.00	GR215 -45 GR215 -46 GR215 -47 GR215 -48 GR215 -75mm	T-215-H

Standard Mounted Units

1. Slot width ('K' dimension) can be made to your specification upon request. See page 129 for suggested options.
2. Specify slot width when ordering the complete unit: Example: GRT205-17-17/32
3. Specify slot width when ordering the housing only: Example: T-205-H-17/32