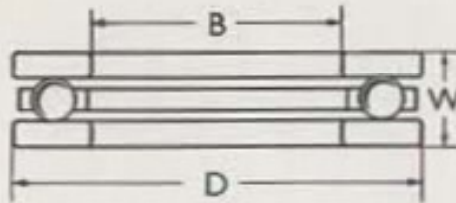


# SINGLE THRUST BEARINGS

## FLAT TRACK INCH SIZES



SERIES

**FT**

TECHNICAL DETAILS  
ARE ON PAGE 107

RBM DESIGNATION	Inches			Approx. Weight in Lb.	Code Word	RBM DESIGNATION	Inches			Approx. Weight in Lb.	Code Word
	B	D	W				B	D	W		
FT $\frac{1}{16}$	$\frac{1}{16}$	$\frac{3}{16}$	$\frac{1}{16}$	0.01	SMADA	FT $\frac{7}{8}$	$\frac{7}{8}$	$1\frac{1}{16}$	$\frac{1}{16}$	0.10	SMELY
FT $\frac{1}{8}$	$\frac{1}{8}$	$\frac{1}{4}$	$\frac{1}{8}$	0.02	SMAFE	FT 1	1	$1\frac{1}{16}$	$\frac{1}{16}$	0.12	SMIHE
FT $\frac{3}{16}$	$\frac{3}{16}$	$\frac{1}{2}$	$\frac{1}{8}$	0.03	SMAGI	FT $1\frac{1}{2}$	$1\frac{1}{2}$	$2\frac{1}{16}$	$\frac{1}{16}$	0.25	SMIKO
FT $\frac{1}{4}$	$\frac{1}{4}$	$\frac{5}{8}$	$\frac{1}{4}$	0.03	SMAHO	FT $1\frac{1}{2}$	$1\frac{1}{2}$	$2\frac{3}{16}$	$\frac{1}{16}$	0.28	SMOHA
FT $\frac{5}{16}$	$\frac{5}{16}$	$1\frac{3}{16}$	$\frac{9}{32}$	0.04	SMAKY	FT $1\frac{1}{2}$	$1\frac{1}{2}$	$2\frac{5}{16}$	$\frac{1}{16}$	0.43	SMOKI
FT $\frac{3}{8}$	$\frac{3}{8}$	$1\frac{1}{2}$	$\frac{9}{32}$	0.06	SMEHI	FT 2	2	$2\frac{7}{16}$	$\frac{1}{16}$	0.50	SMOMU