

# Metric series

**C, CF  
P, PF**

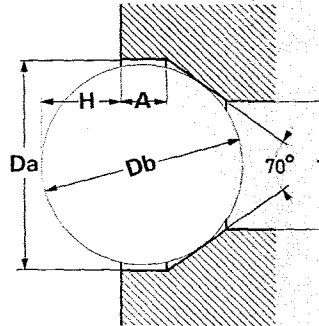
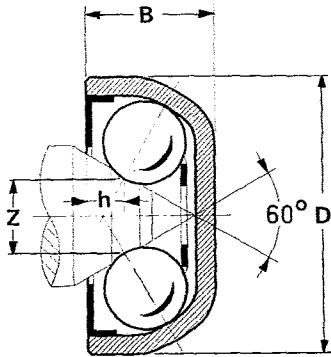
# Angular contact bearing

## Pivot Type

self aligning  
for 60° tapered pivots

The pivots run directly on the balls, therefore the pivots should be made from carbon steel (1.2 to 1.5 % Cr) hardened and tempered to 62 Rockwell C. A highly polished ground 60° pivot greatly reduces rolling friction.

Pivots with a ground and polished ball track have increased load carrying capacity and resistance to wear.



Tolerances recommended for the housing, in  $\mu\text{m}$

$$Da: \begin{matrix} 0 \\ -10 \end{matrix}$$

Da: diameter of housing

Db: ball diameter for controlling housing depth

Actual sizes	z mm	D mm	B mm	c mm	h mm	Db mm	H mm	A mm	T max mm	T min mm	Balls n × $\phi$ mm
	0,13	1,10	0,70		0,23	1,00	0,12	0,46	0,80	0,50	3 × 0,397
	0,20	1,65	1,00		0,35	1,588	0,32	0,65	1,25	0,80	3 × 0,60
	0,37	1,65	0,85	0,25	0,23	1,588	0,45	0,52	1,25	0,80	4 × 0,50
	0,37	2,70	1,50		0,45	2,65	0,82	0,85	2,10	1,40	3 × 1,00
	0,73	2,70	1,35	0,40	0,35	2,65	1,02	0,65	2,10	1,40	5 × 0,794
	1,07	2,70	1,25	0,80	0,38	2,65	1,07	0,60	2,10	1,40	6 × 0,60
	0,55	4,25	2,35		0,68	3,969	1,03	1,38	3,20	2,40	3 × 1,588
	1,13	4,25	2,05	0,75	0,55	3,969	1,33	1,08	3,20	2,40	5 × 1,25
	1,56	4,25	1,95	1,00	0,57	3,969	1,43	0,98	3,20	2,40	6 × 1,00
	1,12	7,50	3,75		1,06	7,144	2,42	2,00	5,70	4,50	3 × 2,778
	1,99	7,50	3,45	1,20	1,01	7,144	2,72	1,70	5,70	4,50	4 × 2,25
	3,15	7,50	3,25	2,00	1,15	7,144	2,92	1,50	5,70	4,50	6 × 1,588
	1,60	10,75	5,35		1,42	10,00	2,97	3,10	8,00	6,70	3 × 3,969
	2,99	10,75	4,85	2,00	1,32	10,00	3,47	2,60	8,00	6,70	5 × 3,175
	4,35	10,75	4,35	3,00	1,22	10,00	3,97	2,10	8,00	6,70	7 × 2,381

## Tolerances of the angular contact bearings, in $\mu\text{m}$

Diameter $D \leq 4,25$ mm		Diameter $D > 4,25$ mm		Width B	
max	min	max	min	max	min
+40	0	+70	0	+40	0

# Metric series

## C, CF P, PF

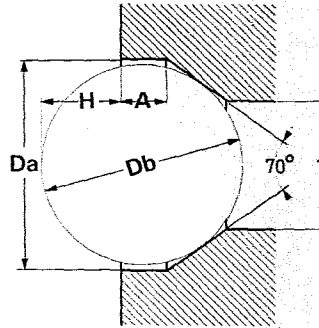
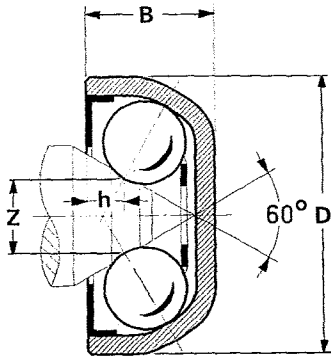
# Angular contact bearing

### Pivot Type

self aligning  
for 60° tapered pivots

The pivots run directly on the balls, therefore the pivots should be made from carbon steel (1.2 to 1.5 % Cr) hardened and tempered to 62 Rockwell C. A highly polished ground 60° pivot greatly reduces rolling friction.

Pivots with a ground and polished ball track have increased load carrying capacity and resistance to wear.



Tolerances recommended for the housing, in  $\mu\text{m}$

$$Da: \begin{matrix} 0 \\ -10 \end{matrix}$$

Da: diameter of housing

Db: ball diameter for controlling housing depth

Actual sizes	z mm	D mm	B mm	c mm	h mm	Db mm	H mm	A mm	T max mm	T min mm	Balls n × $\phi$ mm
○	0,13	1,10	0,70		0,23	1,00	0,12	0,46	0,80	0,50	3 × 0,397
	0,20	1,65	1,00		0,35	1,588	0,32	0,65	1,25	0,80	3 × 0,60
○	0,37	1,65	0,85	0,25	0,23	1,588	0,45	0,52	1,25	0,80	4 × 0,50
	0,37	2,70	1,50		0,45	2,65	0,82	0,85	2,10	1,40	3 × 1,00
○	0,73	2,70	1,35	0,40	0,35	2,65	1,02	0,65	2,10	1,40	5 × 0,794
	1,07	2,70	1,25	0,80	0,38	2,65	1,07	0,60	2,10	1,40	6 × 0,60
○	0,55	4,25	2,35		0,68	3,969	1,03	1,38	3,20	2,40	3 × 1,588
	1,13	4,25	2,05	0,75	0,55	3,969	1,33	1,08	3,20	2,40	5 × 1,25
	1,56	4,25	1,95	1,00	0,57	3,969	1,43	0,98	3,20	2,40	6 × 1,00
○	1,12	7,50	3,75		1,06	7,144	2,42	2,00	5,70	4,50	3 × 2,778
	1,99	7,50	3,45	1,20	1,01	7,144	2,72	1,70	5,70	4,50	4 × 2,25
○	3,15	7,50	3,25	2,00	1,15	7,144	2,92	1,50	5,70	4,50	6 × 1,588
	1,60	10,75	5,35		1,42	10,00	2,97	3,10	8,00	6,70	3 × 3,969
○	2,99	10,75	4,85	2,00	1,32	10,00	3,47	2,60	8,00	6,70	5 × 3,175
	4,35	10,75	4,35	3,00	1,22	10,00	3,97	2,10	8,00	6,70	7 × 2,381

### Tolerances of the angular contact bearings, in $\mu\text{m}$

Diameter D ≤ 4,25 mm		Diameter D > 4,25 mm		Width B	
max	min	max	min	max	min
+40	0	+70	0	+40	0