

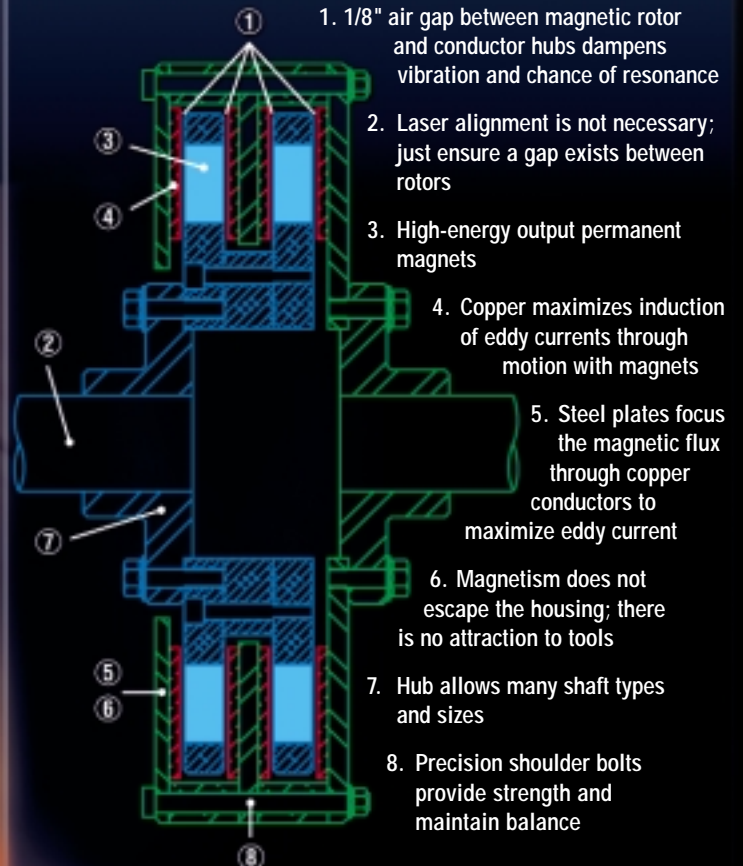
# Power Transmission Technology for the 21st Century and Beyond.



Rexnord is eager to bring this revolutionary new coupling to the marketplace. Virtually every market segment that relies on rotating equipment can gain the benefits of the Rex MagneLink coupling. Its patented design consists of two parts that have no physical contact. This design allows torque to be transmitted through the air while eliminating the transfer of vibration.

## How does the coupling operate?

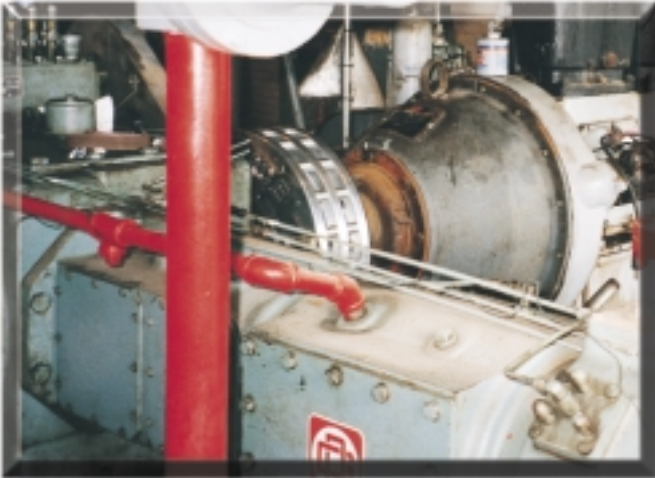
The coupling works on a fundamental principle of nature involving permanent magnets. The magnetic coupling consists of two separate components that have no physical contact. Precision machined aluminum rotors containing high-energy permanent magnets are mounted on one shaft, and a hub conductor consisting of a steel housing with copper rings mounts on the other shaft. The coupling force is created by the relative motion between the copper conductor and the magnets. This motion creates a magnetic field in the copper that interacts with the permanent magnets, thus transmitting torque through air.



# Rex® MagneLink™ – Magnetic Drive Coupling

## Typical Applications

- Pumps
- Blowers
- Engine Drives
- Conveyors
- Compressors
- Crushers/Hammermills
- Generator Sets
- Grinders



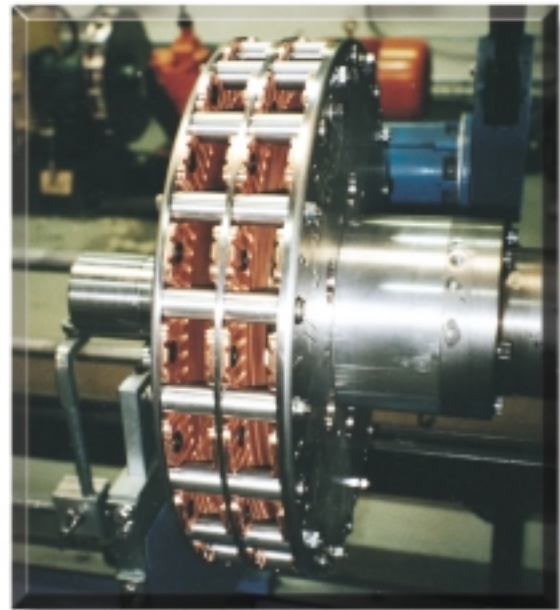
## Industries Served

- Petrochemical and Refining
- Power Utilities
- Materials Handling
- Cement
- Marine
- Food and Beverage
- Pulp and Paper
- Gas Compression
- Mining
- Forest Products
- Transportation
- Construction Equipment

## Magnetic Drive Technology Benefits

### **IMMEDIATE BENEFITS**

- 98% efficient operation
- Motor and load not connected
- Vibration isolation
- Precise alignment unnecessary
- Laser alignment eliminated
- Soft start and stop
- No external energy source required
- Selection of drive train can be based on operating, not starting, torque



### **LONG-TERM BENEFITS**

- No wearing parts
- No maintenance required
- System maintenance reduced
- Increase process reliability and integrity
- Short-term economic payback
- Protect equipment from load seizure



Rexnord Corporation  
Engineered Magnetic Technology Operation  
304 Main Avenue  
Warren, PA 16365  
PH: (814) 728-3200  
FAX: (814) 728-3300  
[www.rexnord.com](http://www.rexnord.com)