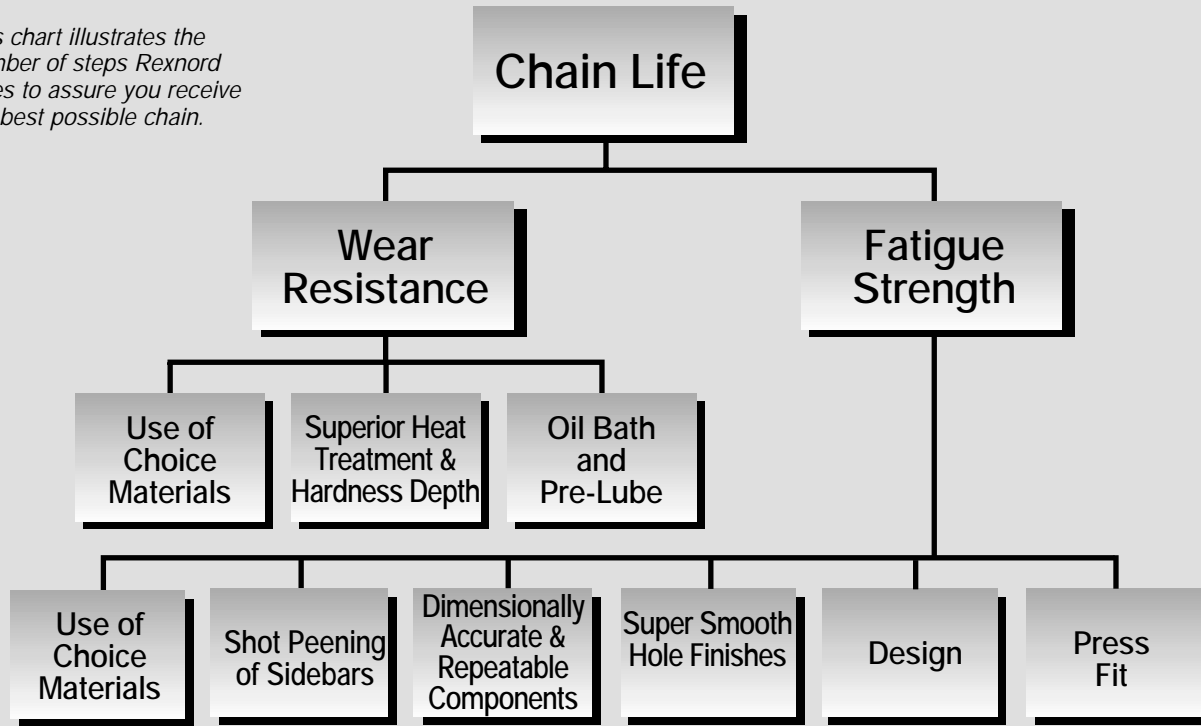


Special Application Chain.....	4-9
Engineered Steel Chains with Rollers	10-13
Engineered Steel Chains without Rollers	14
Engineered Steel Chain Attachments	15-29
Drive Chains	30-35
Welded Steel Chains	36-42
Welded Steel Chains Attachments	43-46
Cast Chains	47-55
Cast Chain Attachments	49, 51, 56-58
Drop Forged Chains	59
Drop Forged Chains Attachments	60-63
Polymeric Chains	64-68
Live Roller Conveyor Chain	69
Double Flex Chain.....	70-71
Low Friction – LF Bushed Chain	72
Platinum Series™ Corrosion-Resistant Chains	73
Rex® and Link-Belt® Chain Interchange	74
Sprockets	75-98
Buckets	99-102
Design and Selection	103-132
Maintenance Information	133-138
Engineering Data.....	139-147
Chain and Sprocket Index	148-150
Subject Index	151-152

INTRODUCTION

INTRODUCTION

This chart illustrates the number of steps Rexnord takes to assure you receive the best possible chain.



CHAIN LIFE – THE CRITICAL CRITERION IN SELECTING YOUR CHAIN SUPPLIER

Chain repair and replacements add up to expensive delays and unforeseen material and labor expenses. Factors that can weigh heavily on your operation’s profitability.

In order to meet tight schedules and keep overhead down, you need to select chain that will perform and last – even under the most rigorous conditions.

Rexnord Corporation, manufacturer of Rex® and Link-Belt® chain for over 100 years, is the leader in the engineered chain industry. Our many years of experience provide unique expertise in material selection, heat treatment and design engineering – key factors that add up to superior chain strength and extended wear life.

What to look for when specifying chain:

- **Wear Resistance** – chain life is directly affected by the hardness of the wearing components. Quite simply, the harder the parts, the longer the wear life. Rexnord’s heat treatment capabilities exceed that of other chain manufacturers. Combine this with the use of choice materials, and it adds up to superior chain that eliminates costly and unexpected downtime.
- **Fatigue Strength** – a key factor leading to the durability of our chains is superior fatigue strength. Tightly controlled interference fits between the pins and chain sidebars, proper welding and stress relieving, heat treatment and regular testing, and application experience make our chains the number one choice for your particular application.

Cross-sections of heat treated chain components. The silver surfaces are the result of acid etching and illustrate the deep case depths our chain components have.



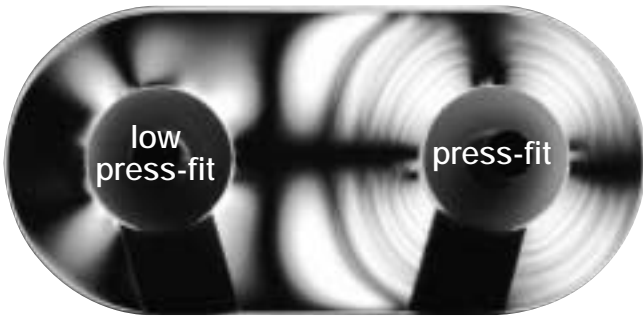
Custom built induction coils and ancillary equipment have been designed by Rexnord expressly for induction heat treating chain components and sprockets.



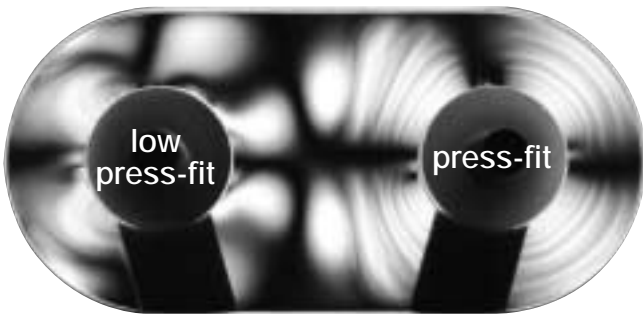
Infeed into one of the many heat treat furnaces used to harden chain components. Note the flame “curtain” used to protect the furnace atmosphere from the outside environment.

■ INTRODUCTION

Strong, fatigue resistant chain is a function of the press fit of pins and bushings. The plexiglas models below help to illustrate this benefit.



In an unloaded state, a pin or bushing with a significant press fit will exert compressive stresses around the chain sidebar hole. Low or non-press fit components exert little to none. This photo shows the stress present around a press fit bushing and the lack of compressive stresses around the non- or low-press fit bushings.



Under load, the stress changes drastically around the low press fit hole but very little around the highly press fit hole. Large stress changes reduce the fatigue resistance of chains. For this reason, Rex and Link-Belt chains use an optimum amount of interference to provide that protective compressive stress!

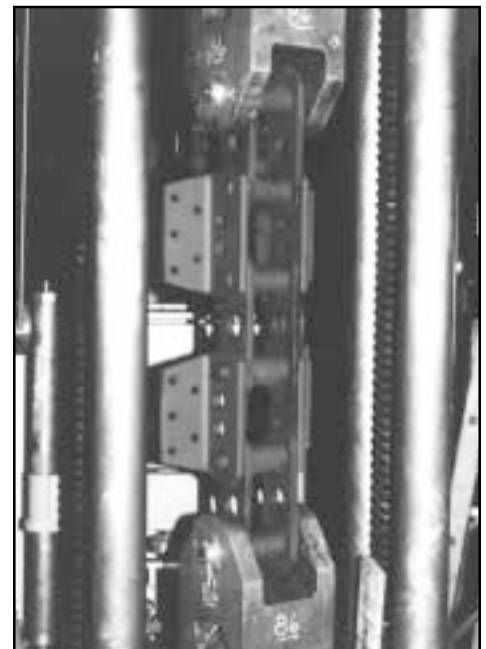
Fully machined pins offer dimensional accuracy critical in the manufacture of reliable, strong chain.



Rexnord has invested heavily in CNC controlled machinery for better lot-to-lot component uniformity.



Pre-lubrication and shrink wrapping: Rexnord takes extra steps at the end of manufacturing to protect your chain. All chain is pre-lubricated and shrink wrapped. This means less corrosion and less break-in wear. Better for long-term storage too.



This photo depicts a fatigue testing machine used by Rexnord to evaluate chain fatigue strengths and guide us in making improvements.

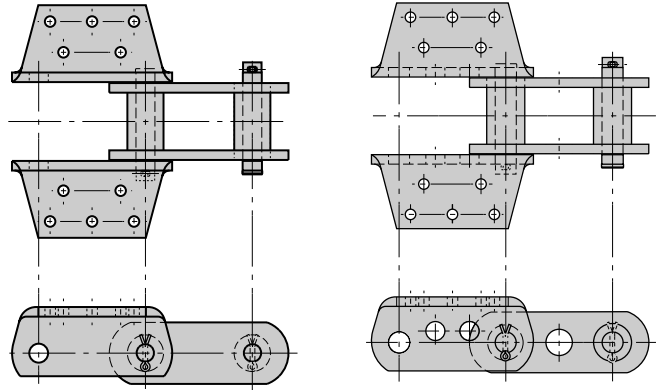
■ SPECIAL APPLICATION CHAIN

HIGH PERFORMANCE ELEVATOR CHAINS

Rex® heavy duty elevator chains have garnered a reputation as the longest lasting, most reliable chains available today for tough elevating applications. Clinker, finished cement, fertilizer, coal, you name it, and it can be elevated most efficiently and reliably with our chains.

The 900 series chains are the newest addition to this line of chain. With larger components, the 900 series offers 30% greater fatigue strength over their 800 series counterparts. Lightening holes were added to the 900 series to offset the increase weight introduced by larger bushings and pins.

No matter which series you choose, you're guaranteed the highest level of heat treatment and manufacturing available in elevator chains today.



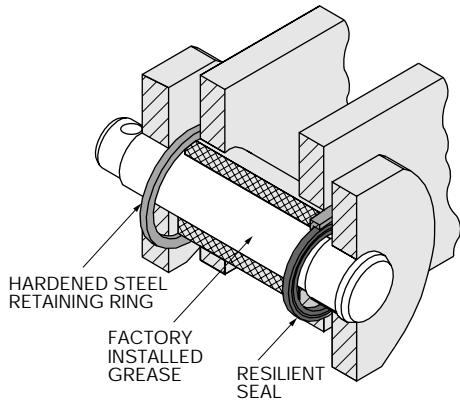
800 Series
RS856
ER857
ER859
ER864

900 Series
ER956
ER958
ER984



Linkmaster®
Keep the advantage of high press fits by using the Linkmaster assembly and disassembly tool. See page 138 for more details.

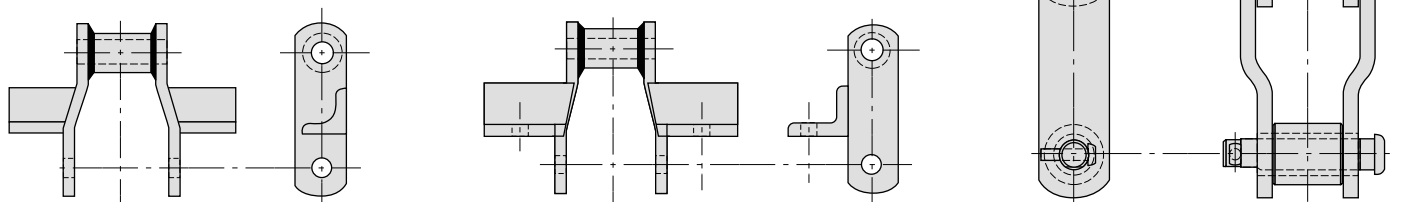
SPECIAL APPLICATION CHAIN



Sealed Joint Elevator Chains
Factory installed grease sealed in, abrasives or corrosives sealed out. An option in these chains and denoted by the "SJM" prefix.

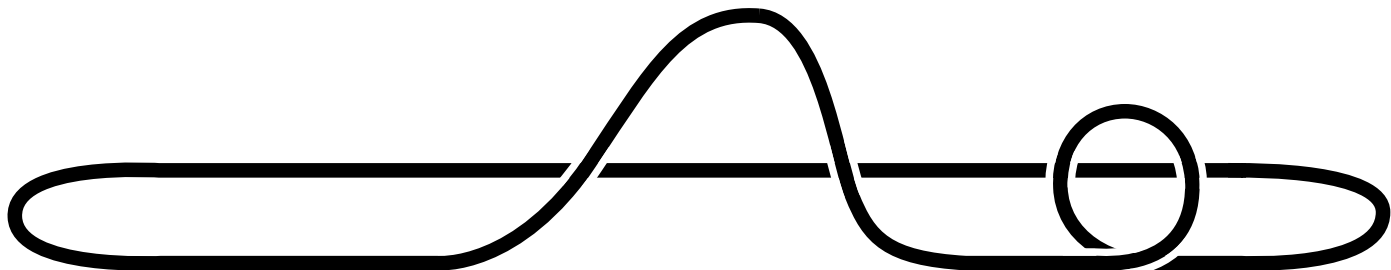
GRAIN HANDLING CHAINS

Rexnord manufactures a wide variety of chains for the grain industry. Welded steel chains are very popular due to the fact that they are easily modified by welding on a variety of attachments. Press fit engineered steel chains with rollers are used in longer, higher load systems. The chains shown are examples of these two chain types.



■ SPECIAL APPLICATION CHAIN

REX AND LINK-BELT ENGINEERED CHAIN APPLICATION FOR AMUSEMENT RIDES, RECREATIONAL LIFTS, AND OTHER PEOPLE MOVERS



From time to time, chain application questions concerning driving or conveying functions on amusement rides and recreational lifts are brought to Rexnord's attention. Concern arises for the safety and the well being of people utilizing these units should chains prematurely or unexpectedly fail. A general review has been made to establish certain rules and recommendations for the selection and application of these rides and conveyances. The following reflects those conclusions:

1. Chain should not be used for any amusement ride or recreational lift application unless there are adequate, functional, and operational safety backup devices to prevent hazardous or unsafe conditions from occurring.
2. Chains containing castings or molded parts of any material should not be applied to these applications. This includes pintle, heavy pintle, combination, cast steel, nonmetallic, and similar chains.
3. Chains containing weldments of any nature should not be applied to these applications. This includes welded steel versions of basic cast pintle chains and engineered steel chains containing welded components.
4. Chain selections of any nature should not be made or changed without written approval of the appropriate representatives of an approved original equipment manufacturers of that equipment. This includes replacement chains from any manufacturer including Rexnord. Written approval is required for each purpose.
5. Chain selections for amusement rides or recreational lift applications should be of the engineered steel types of chain generally covered by ANSI standards B29.10, B29.12, and B29.15 after review of all application factors by and approval of the appropriate responsible representative of the original equipment manufacturer of the equipment.
6. Chains on these applications should be adequately lubricated and properly maintained at all times.
7. Chain reliability is based upon a good press fit of the pins and bushings into the sidebars. Therefore, do not grind the chain pins, bushings, or holes in the sidebars in order to assemble the chain as supplied from the factory.
8. Alteration of chain destroys the integrity of the press fits of the chain assembly. Therefore, do not alter or rebuild any chains for these applications.
9. If a customer applies an engineered chain product without our approval, it is a misapplication and, as such, is not warranted under our standard conditions of sale.

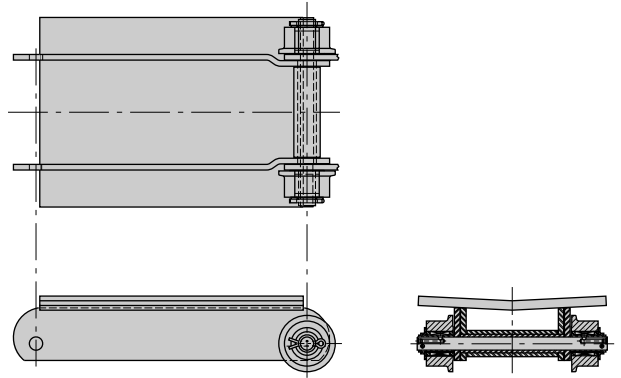
Should questions arise covering any of these policies or procedures, please contact your local Rexnord sales office.

■ SPECIAL APPLICATION CHAIN

IN-FLOOR CONVEYING CHAIN

Rex® and Link-Belt® In-Floor Conveyor Chains are specially designed to move continuous loads, such as those found in the paper, steel and automotive industries. Rexnord manufactures a variety of configurations to accommodate a multitude of applications.

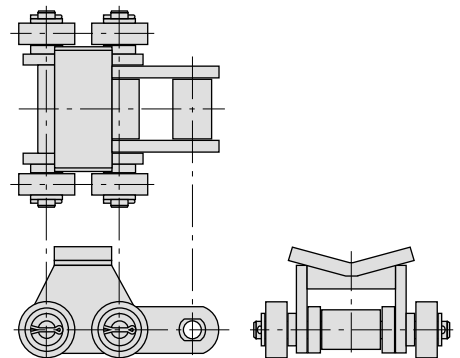
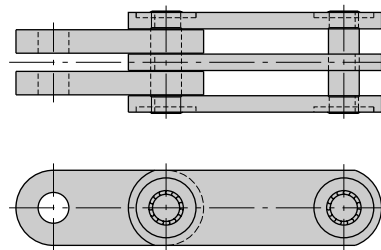
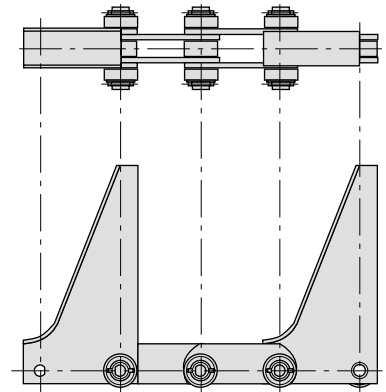
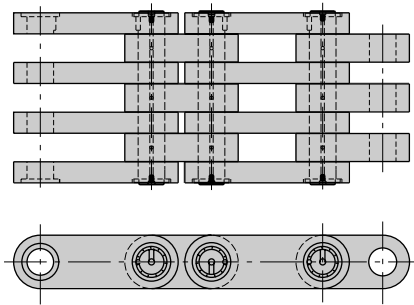
A complete selection of materials, top plates and pitch lengths are also offered.



SPECIAL APPLICATION CHAIN

DRAW BENCH AND STEEL INDUSTRY CHAINS

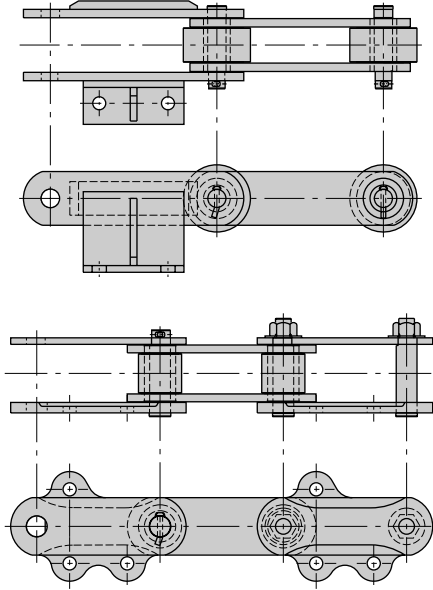
Hot steel slabs, coiled steel and metal tubing all move smoothly on our chains. Rollers, if needed, are fully machined and supplied with bearings. The large laced chains shown to the right are for draw benches used in the tube industry. These chains are fully machined on Rexnord's modern CNC milling machines.



■ SPECIAL APPLICATION CHAIN

RECLAIMER AND BARGE/SHIP UNLOADING CHAINS

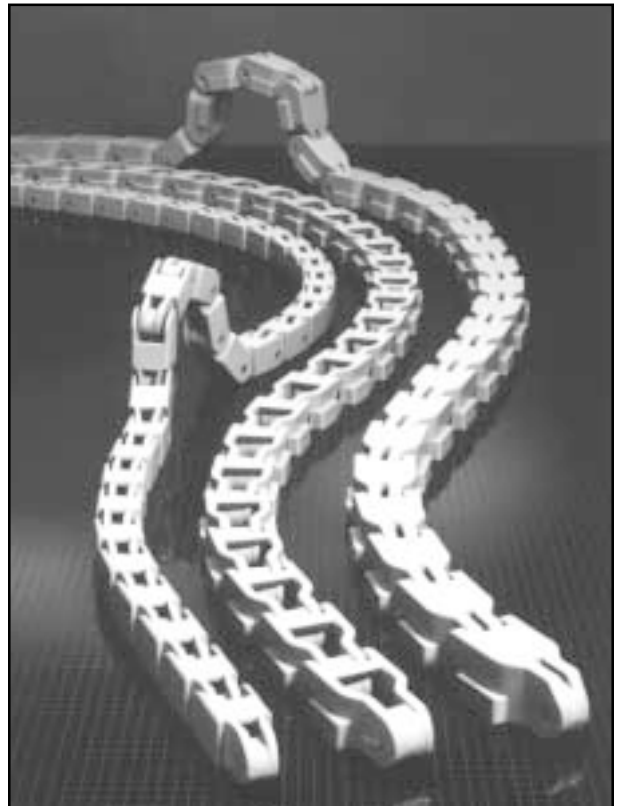
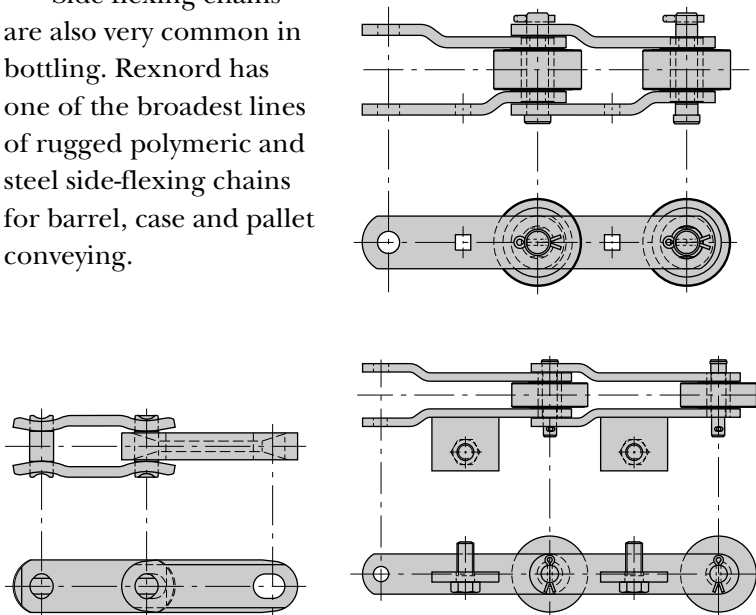
Many types of reclaimers and barge/ship unloaders use large engineered class chains. Rexnord can design new chains for these applications, or build replacement chains if given a sample. Below are some examples of chains we have made, but the styles we can make are virtually limitless.



BOTTLING AND BEVERAGE INDUSTRY

Some of the most commonly used engineered chains in the bottling industry are bottle washer chains. Rexnord makes a wide variety of these chains that meet or exceed OEM specifications. Chains and attachments can be modified to help solve maintenance problems. Below are some examples of chains we make.

Side-flexing chains are also very common in bottling. Rexnord has one of the broadest lines of rugged polymeric and steel side-flexing chains for barrel, case and pallet conveying.



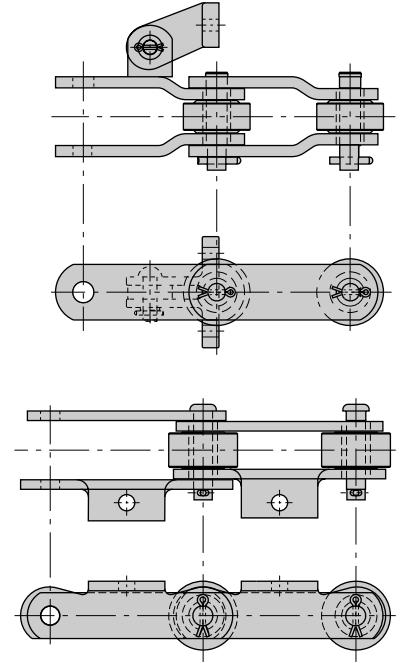
SPECIAL APPLICATION CHAIN

■ SPECIAL APPLICATION CHAIN

CANE SUGAR AND SUGAR BEET PROCESSING

Bagasse, intermediate, feed tables and main cane carrier chains are all available from Rexnord. Many sugar processing chains are the same as they were years ago when mills were smaller. Today's larger mills require newer, stronger chains such as the Rex® F9184 – a larger version of the F2184. Contact Rexnord for a copy of the latest Sugar Mill Chains brochure.

Many chain styles are available for sugar beet processing as well. As in cane sugar processing, this industry is very corrosive. Sealed Joint chains are available for sugar beet elevators to fend off pin and bushing corrosion. Special materials and platings are also available.

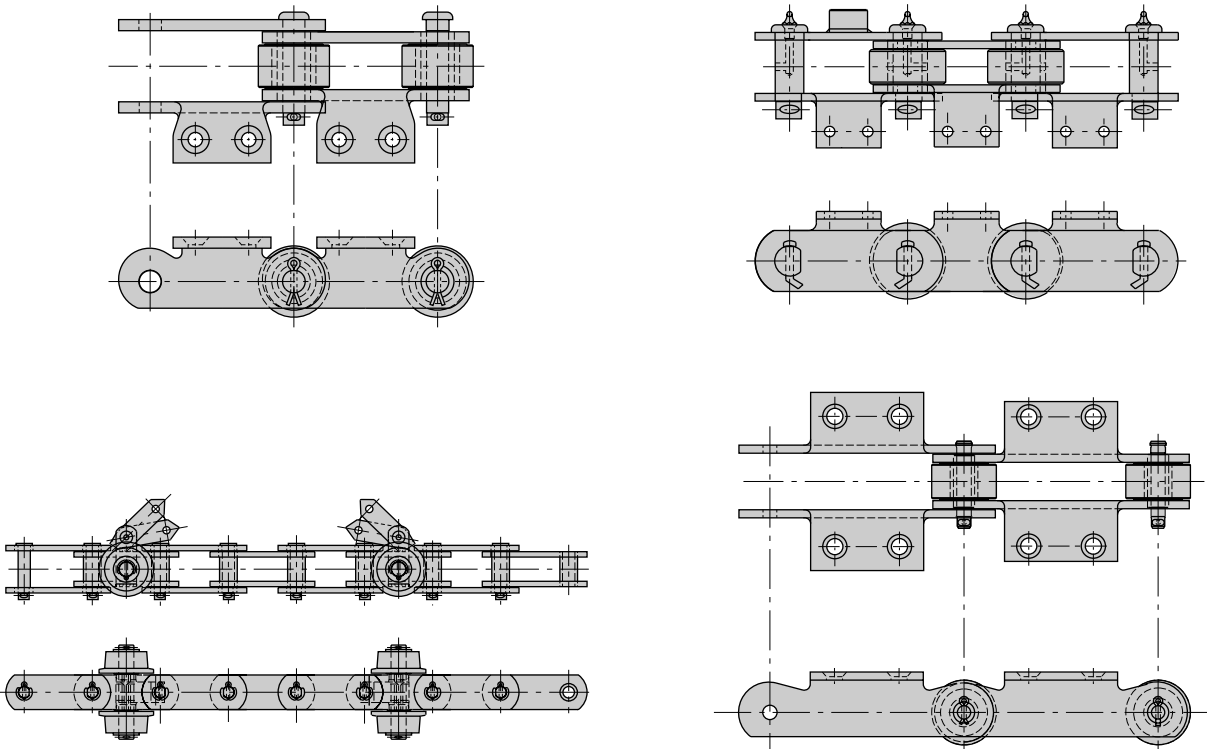


FOOD PROCESSING

Engineered chain is used throughout the food processing industry. Some typical applications include hydrostatic cookers, overhead carcass conveyors, cutting tables and vegetable process conveyors. Examples of some of the metallic chain configurations used in this industry are shown below.

Rexnord offers a wide variety of material and/or coating options to combat the corrosive elements generally found in these applications. See pages 72-73 for examples of solutions that would apply to metallic chains. See pages 64-68 for polymeric chains and accessories.

Chains for the baking industry (oven, proofer, etc.) are also available. Contact Rexnord for details.

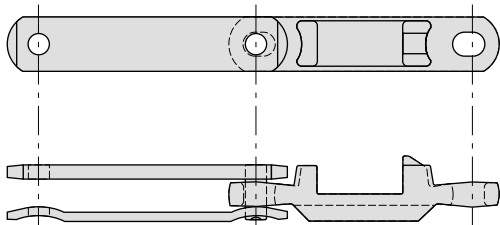
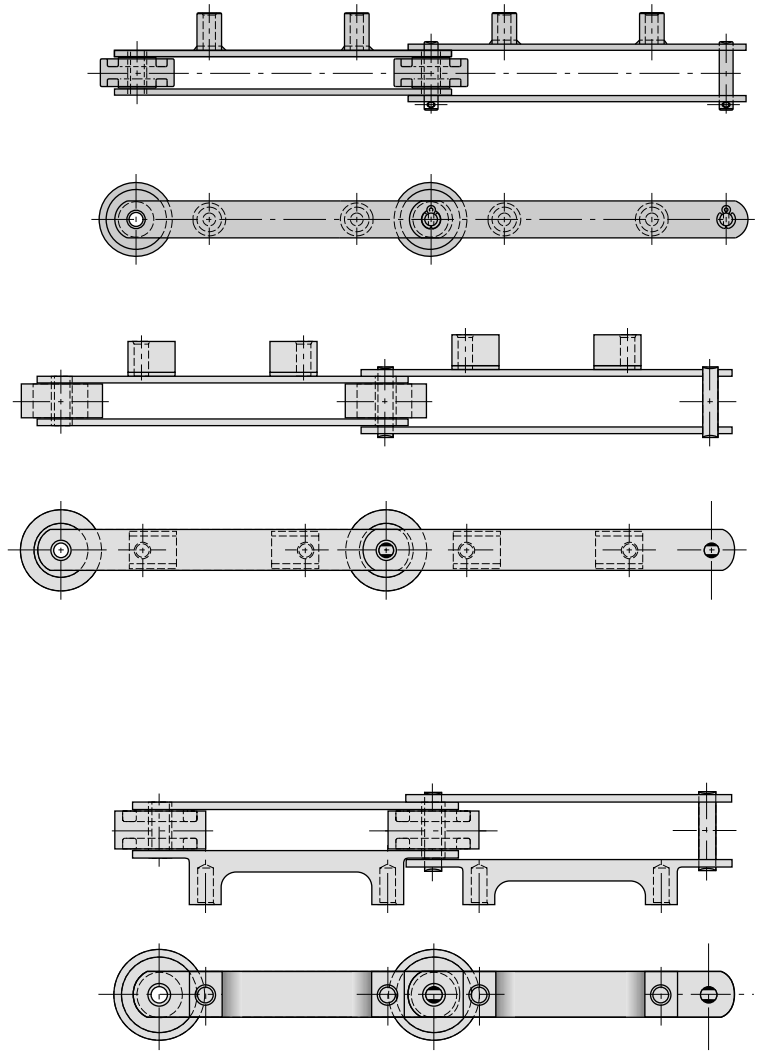


■ SPECIAL APPLICATION CHAIN

DISTRIBUTION AND MATERIAL HANDLING

Today's large postal and consumer goods distribution centers rely heavily upon engineered chains to sort and move product. Sortation chains are the most common and Rexnord has developed many different styles to suit particular needs. Sorter cart mounting bosses can be modified in a number of ways to increase strength and performance. Chain rollers are available in molded thermoplastics or in super rugged urethane lagged steel – your choice.

In-floor tow chains for automated cart conveyors are also made by Rexnord. Call for details.



SPECIAL APPLICATION CHAIN

HIGH SIDEBAR AND GENERAL CONVEYING CONVEYOR CHAIN

Rex and Link-Belt® High Sidebar Conveyor Chains offer superior strength for conveying heavy loads, such as those found in the automotive, steel and general assembly industries. It rolls comfortably on any even, firm surface to provide efficient, economical conveying. Versions with intermediate rollers are available for accumulation conveyors.

