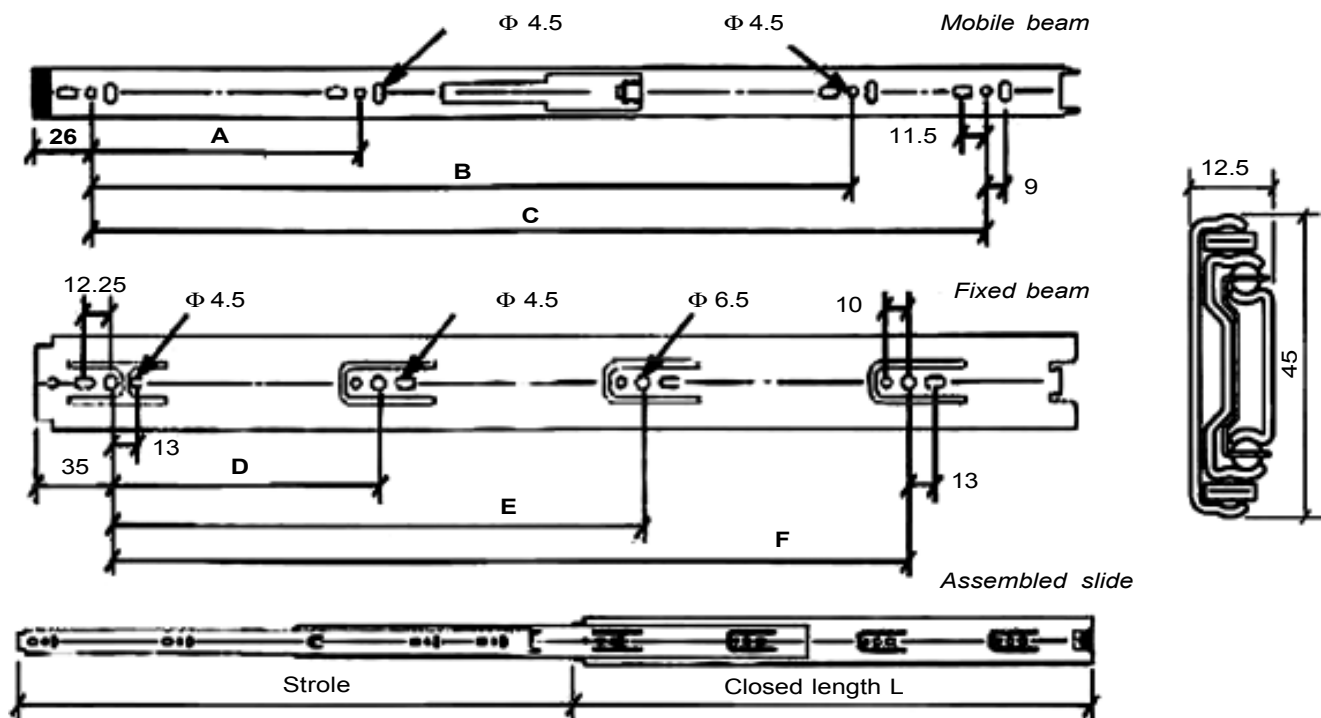


STEEL TELESCOPIC RAILS

LTL45 Series

LTL45 slides are a new entry in LIGHT RAIL family products. They are made in three beams, all in folded sheet metal. The slide allows to move the mobile element along the whole length.

Dimensions in mm



Closed length L (mm)	Stroke (mm)	A (mm)	B (mm)	C (mm)	D (mm)	E (mm)	F (mm)
350	350	-	296	-	128	256	-
400	400	128	320	-	128	288	-
450	450	160	384	-	128	256	352
500	500	160	416	-	128	256	384
550	550	192	-	480	128	288	448
600	600	192	416	512	128	352	480
650	650	192	448	576	128	352	544
700	700	224	480	680	128	352	544

AVAILABILITY

Available in eight lengths as shown above, from 350 to 700 mm. Special requests can be discussed with our Technical Service.

STANDARD LENGTHS - LTL45 Series

Please consult the table above.

LOAD

Capacity load: 45 kg

This load must be read as a uniformly distributed load acting radially on a pair of slides 400 mm length which are rigidly attached throughout their length to the structure and to the moving part.

SPECIFICATIONS

All beams are made from zinc plated steel.

Ball bearings allow the sliding movement.

Weight: 5,8 kg/m per pair.

**ORDER CODES****LTL45 - 400**