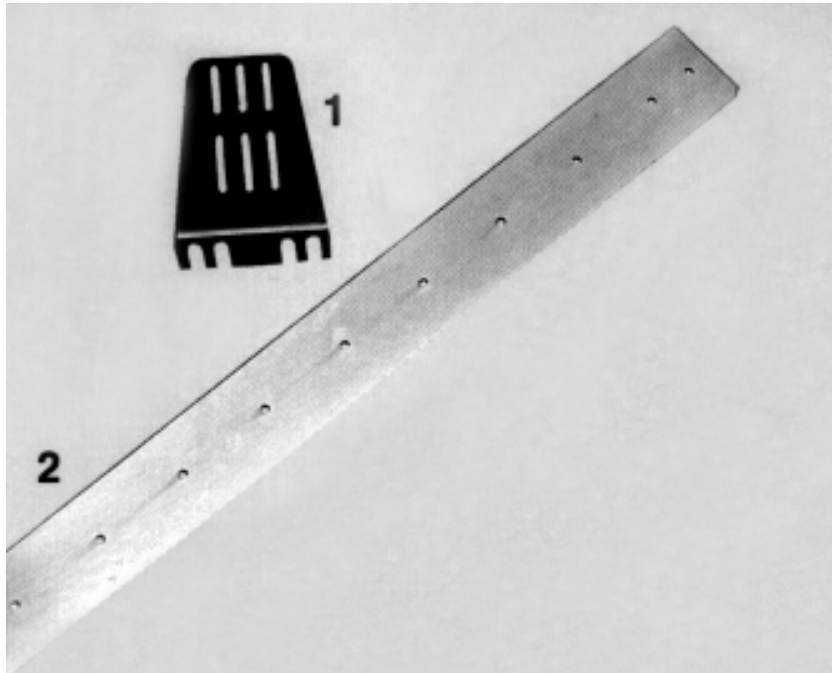


FIXING METHODS

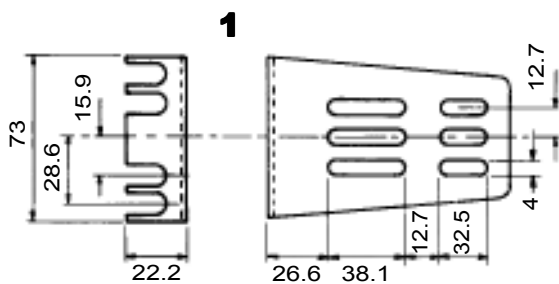


Fixing of the LST33 steel telescopic slides

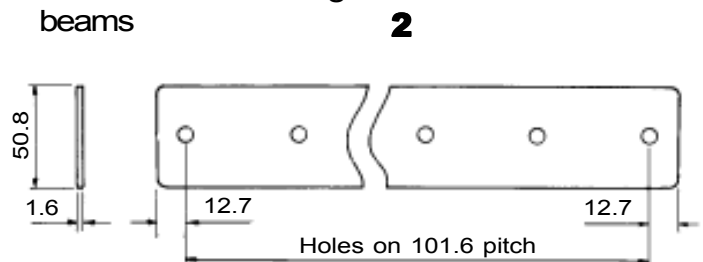
The **ST3 brackets** enable LST slides to be quickly fitted into an electronic (19") equipment rack.

The **ST1 and ST2 mounting beams** used with ST3 brackets, both strengthen the slides and enable short slides to be fitted into a deeper rack.

ST3 brackets



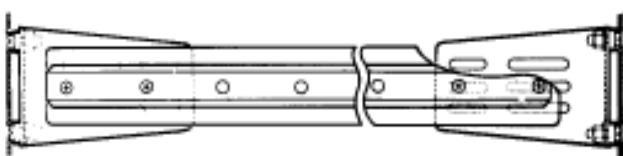
ST1 and ST2 mounting beams



Dimensions in mm

The ST3 brackets are in zinc plated and passivated steel (1.2 mm thick) supplied in sets of four with fixing screws.

ST1 mounting beam length 431,8 mm.
ST2 mounting beam length 558,8 mm.
Zinc plated and passivated steel.



Assembly of slides, mounting beam and brackets.

The bracket and mounting beams illustrated provide equivalent support when the beam cannot be directly fixed to the sides of the framework. The use of beams can usually be omitted for slides up to 501.7 mm long when they are carrying not more than half the recommended maximum load.