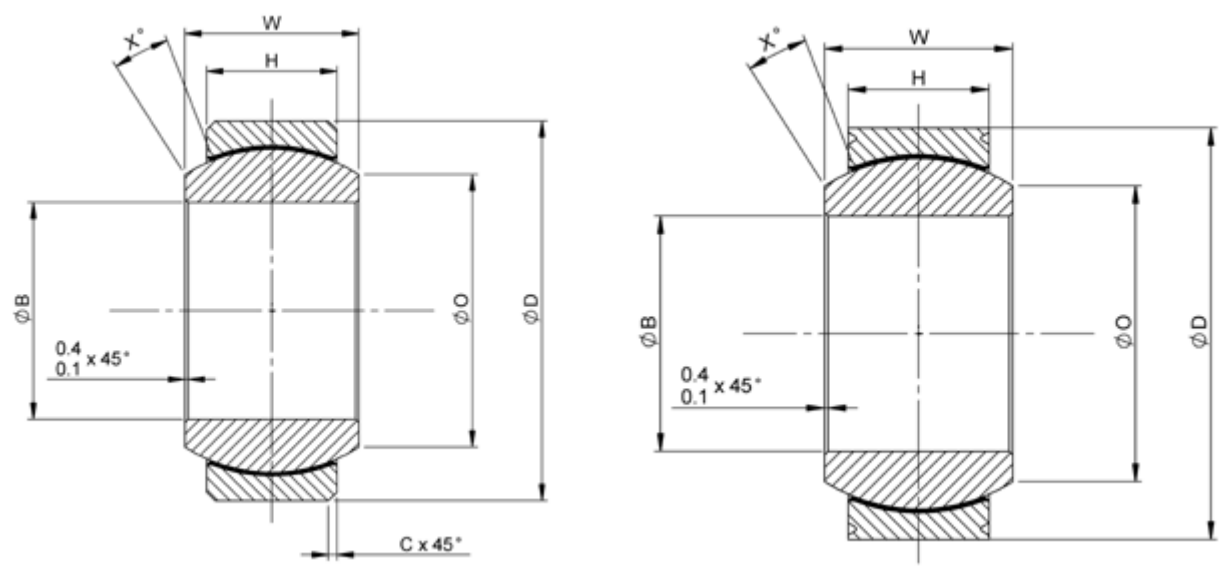


EN 3048 Light Series MLD (G)

Menu

- P/N X-Ref
- Materials
- Clearance/Torque
- Staking Groove
- Limits & Fits
- Keyways



Bore code	B		D		H	W	O	C		X°	Ball dia nom	Max static load N		Dynamic radial load max 25000 cycles N	Weight g max
	max	min	max	min	+0.1 -0.1	+0 -0.06	min	max	min	max		Radial	Axial see note 1		
12	12.003	11.989	22.006	21.985	7.0	10.0	14.3			11	17.5	46400	3700	25500	17
15	15.003	14.989	26.006	25.985	9.0	12.0	18.7	0.8	0.5	9	22.3	79500	8000	43700	26
17	17.003	16.989	30.006	29.985	10.0	14.0	21.2			10	25.5	102600	10600	56400	40
20	20.003	19.987	35.008	34.981	12.0	16.0	24.9			9	29.8	147400	17000	81000	65
25	25.003	24.987	42.008	41.981	16.0	20.0	30.0	1.0	0.6	7	36.1	221700	28700	110800	115
30	30.003	29.987	47.008	46.981	18.0	22.0	34.3			6	40.8	285600	38200	142800	160
35	35.003	34.985	55.010	54.977	20.0	25.0	40.5			7	47.6	374500	48700	187300	229
40	40.003	39.985	62.010	61.977	22.0	28.0	45.0			7	53.1	462700	60700	231300	315
45	45.003	44.985	68.010	67.977	25.0	32.0	51.3	1.2	0.8	7	60.5	605800	81600	302900	460
50	50.003	49.985	75.010	74.977	28.0	35.0	58.2			7	68.0	768000	105600	384000	560

Dimensions in millimetres
 Note1- For bearing without staking grooves
 Chamfer C applies to MLD-- series only

NMB Head Office UK Germany France Italy Singapore USA Contact Details