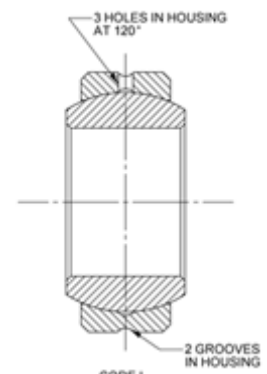
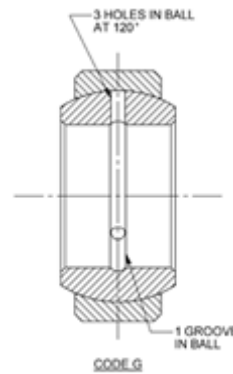
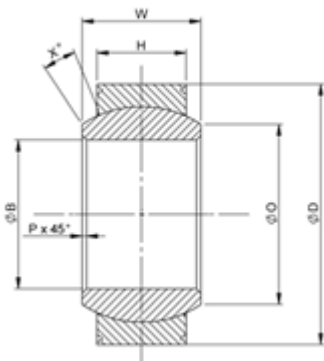
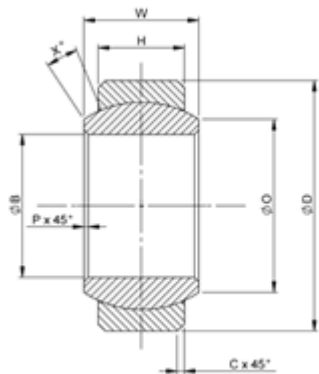


EN 2335 Light Series MSTL(G)--EN

- Menu
- P/N X-Ref
- Materials
- Clearance/Torque
- Staking Groove
- Limits & Fits
- Keyways



Bore code	B		D		H	W		O	C	P	X°	Ball dia nom	Permissible static loads			Weight g max
	nom	limit	nom	limit	+0 -0.25	nom	limit	min			min		Radial kN	Axial kN		
														Without grooves	With grooves	
04	4		12		3	5		6			16	8	7.2	0.45		3
05	5		14	+0.005	4	6	+0	8	0.3	0.3	13	10	12.6	0.80		5
06	6	+0.002 -0.010	14	-0.013	4	6	-0.075	8	to	to	13	10	16.0	1.00	N/A	5
08	8		16		5	8		10	0.8		15	13	21.0	1.80		8
10	10		19		6	9	+0	13			12	16	31.0	2.50		12
12	12		22	+0.006 -0.015	7	10	-0.090	15	0.5		11	16	40.5	3.50		17
15	15	+0.003 -0.011	26		9	12		18	to	0.5	8	22	70.0	5.30	5.30	32
17	17		30		10	14	+0	20	1.2		10	25	91.4	6.70	6.70	49
20	20	+0.003 -0.013	35	+0.008 -0.019	12	16	-0.110	24	0.6	0.8	9	29	130.0	9.80	9.80	65
25	25		42		16	20		29	to		7	36	216.7	18.00	18.00	115
30	30		47		18	22	+0	34	1.5		6	41	277.5	25.00	25.00	160
35	35		55		20	25	-0.130	39		0.6	6	47	359.9	31.00	31.00	230
40	40	+0.003 -0.015	62	+0.010 -0.023	22	28		45	0.8	to	7	53	428.8	38.00	38.00	315
45	45		68		25	32	+0	50	to	1.0	7	60	558.4	50.00	44.00	460
50	50		75		28	35	+0	55	to	1.2	6	66	760.1	64.00	50.00	560
60	60	+0.004 -0.019	90	+0.013 -0.028	36	44	-0.160	66	1.7	to	6	80	1056.0	104.00	N/A	1100

Dimensions in millimetres
No staking grooves available in sizes 4 to 10 inclusive and size 60

NMB Head Office UK Germany France Italy Singapore USA Contact Details