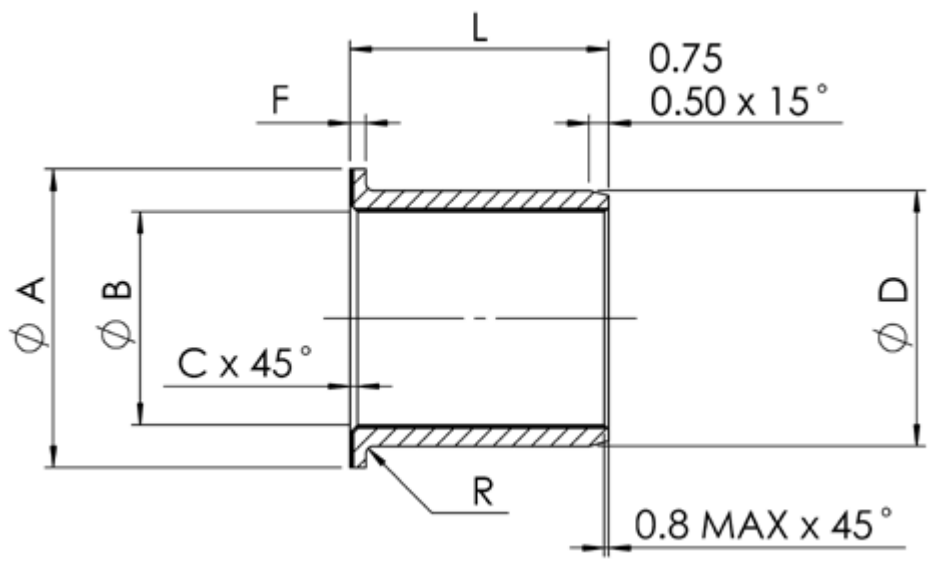


MTFD
Flanged Series Cres. Steel
MTFD

Menu

P/N X-Ref
Materials
Clearance/Torque
Staking Groove
Limits & Fits
Keyways



B		D		A	F	R	C	Length																	
nom	tol	nom	tol p6	+0 -0.25	+0 -0.15		max	6	8	10	12	15	16	18	20	22	25	28	30	32	35	40	45	50	
								$L_{-0.1}$ $L_{-0.4}$																	
								Mass in kg/1000 pcs																	
6	+0.022 +0.004	10	+0.024 -0.015	12		0.1 to 0.4	0.9	2.8																	
8	+0.027	12	+0.029	14				3.5	4.4																
10	+0.005	14	+0.018	16				4.1	5.3	6.5															
12		16		22				6.3	7.6	9.0	10.4														
15	+0.033	19		25	1.5			9.2	10.8	12.5	15.6														
16	+0.006	20		26				9.7	11.5	13.2	15.9	16.8													
18		22	+0.035	28					12.7	14.7	17.6		20.8												
20		25	+0.022	30					16.5	19.2	23.4			30.4											
22		26		32						17.5	21.0			27.0	29.3										
25	+0.040	30		35		0.5 to 0.8				23.4	28.5			37.0	40.4	45.5									
28	+0.007	34		40							41.4			52.8	57.4	64.3	71.2								
30		36		42							43.9			56.2	61.1	68.4		80.7							
32		38	+0.042	44			1.2				46.5			59.5	61.7	72.5		85.5	90.7						
35		42	+0.026	47	2.5									73.5	80.2	90.2	106.8		123.5						
40	+0.048	48		52										93.2		115.0	136.0	158.5	180.0						
45	+0.009	52	+0.051	57												113.3	138.3	155.3	176.3	197.3					
50		58	+0.032	62												140.9	167.6	194.3	221.0	247.4	274.0				

Dimensions in millimetres

Load Calculations

Static radial limit load = $0.43B \times (L - 1.2 - R_{max} - F_{max})$ kN

Static axial limit load = $0.34[(A - 1.5)^2 - (B + 2.5)^2]$ kN

Permissible dynamic load = Static radial limit load / 2.5 kN

Where:

B = Bush bore diameter

L = Bush length

R = Corner radius

F = Flange width

A = Flange diameter



Head
Office

UK

Germany

Contact Details

France

Italy

Singapore

USA