

High Angle Series RHAD (G)

Menu

P/N X-Ref

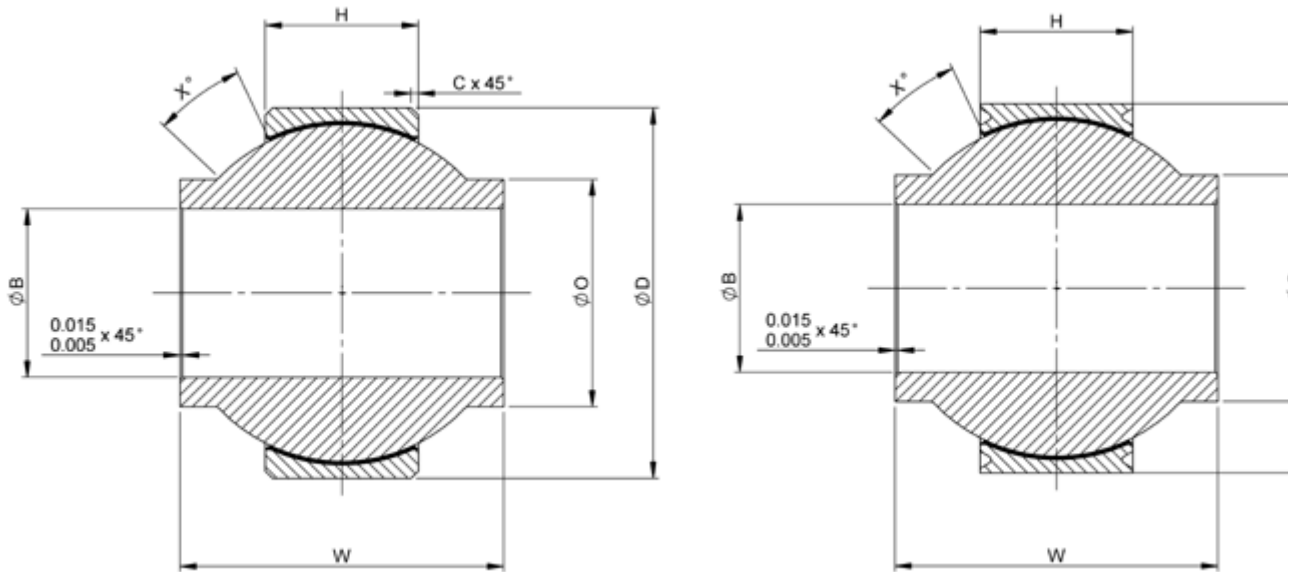
Materials

Clearance/Torque

Staking Groove

Limits & Fits

Key



Bore code	B	D	H	W	O	C	X°	Max static radial load lbf	Max Dynamic radial load lbf	Weight lb max
	+0.0000 -0.0005	+0.0000 -0.0005	+0.005 -0.005	+0.000 -0.005	ref	+0.005 -0.005	min			
04	.2500	.7400	.255	.593	.380	.017	24	8698	3800	.036
05A	.3125	.6875	.255	.625	.420		20	8698	3800	.025
05	.3125	.9060	.345	.813	.500	.027	23	16210	7200	.068
06	.3750	.9060	.345	.813	.500		23	16210	7200	.068
07	.4375	1.0000	.345	.875	.600		22	18235	8100	.095
08	.5000	1.1250	.401	.937	.669		20	25120	10900	.159
10	.6250	1.3750	.567	1.200	.844	.039	20	46079	20000	.245
12	.7500	1.5625	.620	1.280	.950		18	55240	24200	.315
14	.8750	1.7500	.625	1.400	1.110	.039	18	62392	27600	.430
16	1.0000	2.1250	.835	1.875	1.260		21	105990	49560	.810

Dimensions in inches

Chamfer C applies to RHAD series only

Chamfered series RHAD--

Staking groove series RHADG--



Head Office

UK

Germany

Contact Details

France

Italy

Singapore

USA