

MS 14104      Narrow Series Chamfered      RND--MS

Menu

P/N X-Ref

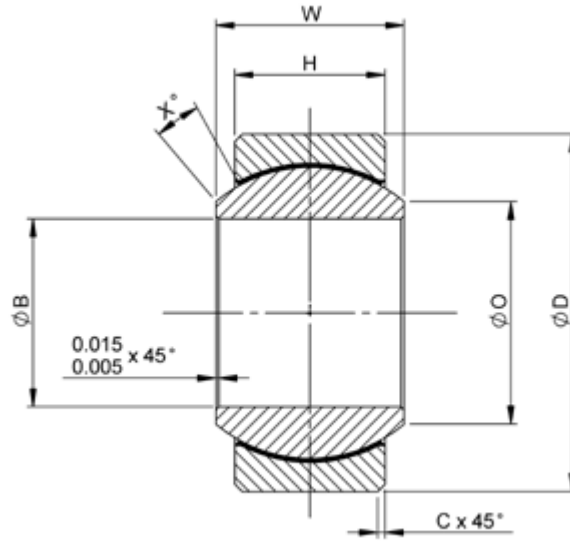
Materials

Clearance/Torque

Staking Groove

Limits & Fits

Keyways



Bore code	B	D	H	W	O	C	X°	Ball dia nom	Max static load lb		Weight lb max
	+0.000 -0.0005	+0.000 -0.0005	+0.005 -0.005	+0.000 -0.002	min				Radial	Axial	
03	.1900	.5625	.218	.281	.293	.010	10	.437	3975	150	0.02
04	.2500	.6562	.250	.343	.364	to	10	.500	6040	430	0.02
05	.3125	.7500	.281	.375	.419	.020	10	.594	8750	700	0.03
06	.3750	.8125	.312	.406	.475	to	9	.625	10540	1100	0.04
07	.4375	.9062	.343	.437	.530	.020	8	.687	13200	1400	0.05
08	.5000	1.0000	.390	.500	.600	to	8	.781	17900	2100	0.07
09	.5625	1.0937	.437	.562	.670	.030	8	.875	23200	3680	0.09
10	.6250	1.1875	.500	.625	.739	to	8	1.000	30500	4720	0.12
12	.7500	1.4375	.593	.750	.920	.030	8	1.250	46400	6750	0.21
14	.8750	1.5625	.703	.875	.980	to	8	1.375	62200	9350	0.27
16	1.0000	1.7500	.797	1.000	1.118	.040	9	1.562	82200	12160	0.39

Dimensions in inches



Head Office

UK

Germany

Contact Details

France

Italy

Singapore

USA