

NSA 8134 Narrow Series Chamfered RND--NSA

Menu

P/N X-Ref

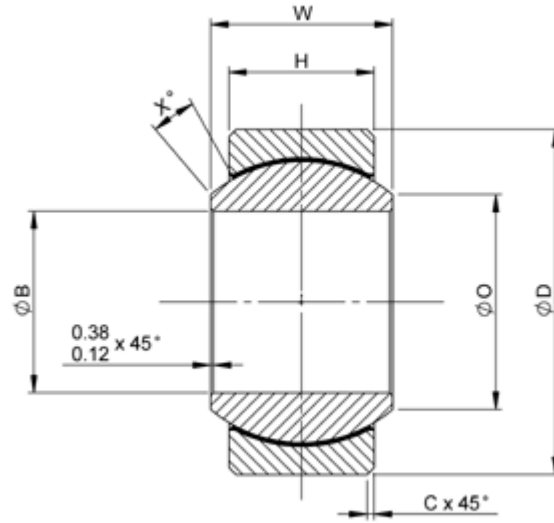
Materials

Clearance/Torque

Staking Groove

Limits & Fits

Keyways



Bore code	B	D	H	W	O	C	X°	Ball dia nom	Max static load daN		Dynamic radial load daN	Weight g max
	+0 -0.0127	+0 -0.0127	+0.127 -0.127	+0 -0.051	min	+0.254 -0	Radial		Axial			
03	4.826	14.2875	5.537	7.137	7.44	0.254	10	11.100	1758	66	667	9
04	6.350	16.6675	6.350	8.712	9.24	0.254	10	12.700	2686	191	1032	9
05	7.937	19.0500	7.137	9.525	10.64	0.381	10	15.088	3892	311	1525	14
06	9.525	20.6375	7.925	10.312	12.07	0.508	9	15.875	4688	489	1868	18
07	11.113	23.0175	8.712	11.100	13.46	0.508	8	17.449	5871	622	2535	22
08	12.700	25.4000	9.906	12.700	15.24	0.508	8	19.837	7962	934	3514	31
09	14.288	27.7800	11.100	14.275	17.02	0.508	8	22.225	10319	1637	4581	40
10	15.875	30.1625	12.700	15.875	18.77	0.508	8	25.400	13576	2099	5960	54
12	19.050	36.5125	15.062	19.050	23.37	0.508	8	31.750	20639	3002	8763	95
14	22.225	39.6875	17.856	22.225	26.92	0.762	8	34.925	27668	4158	11609	122
16	25.400	44.4500	20.243	25.400	28.40	0.762	9	39.675	36564	5409	15168	176
20	31.750	50.8000	23.926	27.762	36.70	0.762	6	46.025	40500	7800	20027	240
28A	44.450	73.0250	25.400	28.575	52.75	0.762	4	60.000	127432	8855	28967	545

Dimensions in millimetres

NMB Head Office UK Germany Contact Details France Italy Singapore USA