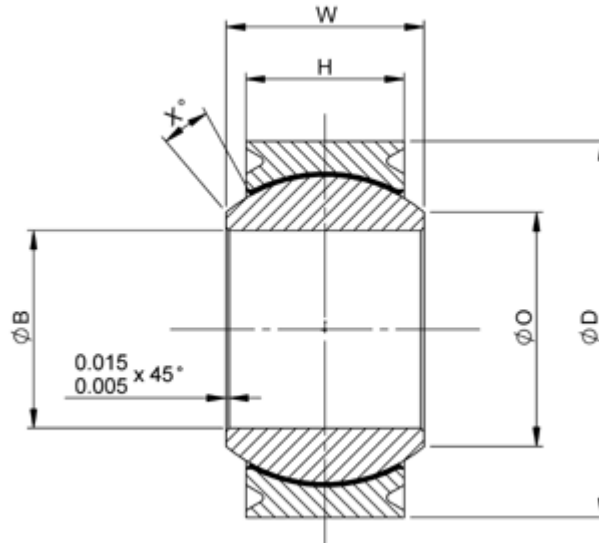


MS 14101

Narrow Series Grooved

RNDG--MS

[Menu](#)[P/N X-Ref](#)[Materials](#)[Clearance/Torque](#)[Staking Groove](#)[Limits & Fits](#)[Keyways](#)

Bore code	B	D	H	W	O	X°	Ball dia nom	Max static load lb		Weight lb max
								Radial	Axial	
03	.1900 +.0000 -.0005	.5625 +.0000 -.0005	.218 +.005 -.005	.281 +.000 -.002	.293 min	10	.437	3975	150	0.02
04	.2500	.6562	.250	.343	.364	10	.500	6040	430	0.02
05A	.3125	.7500	.281	.375	.419	10	.594	8750	700	0.03
05	.3125	.7500	.281	.375	.419	10	.594	8750	700	0.03
06	.3750	.8125	.312	.406	.475	9	.625	10540	1100	0.04
07	.4375	.9062	.343	.437	.530	8	.687	13200	1400	0.05
08	.5000	1.0000	.390	.500	.600	8	.781	17900	2100	0.07
09	.5625	1.0937	.437	.562	.670	8	.875	23200	3680	0.09
10	.6250	1.1875	.500	.625	.739	8	1.000	30500	4720	0.12
12	.7500	1.4375	.593	.750	.920	8	1.250	46400	6750	0.21
14	.8750	1.5625	.703	.875	.980	8	1.375	62200	9350	0.27
16	1.0000	1.7500	.797	1.000	1.118	9	1.562	82200	12160	0.39

Dimensions in inches



Head Office

UK

Germany

Contact Details

France

Italy

Singapore

USA