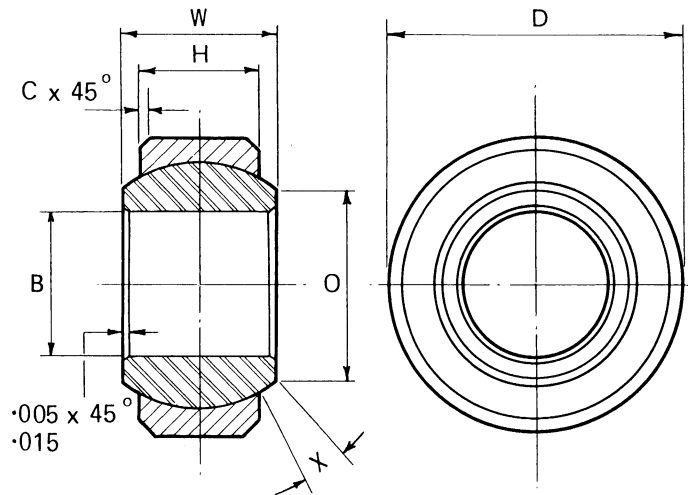


## RSTN series narrow

### Specification

**Housing**    Stainless steel.  
                  Heat treated.

**Ball**         Stainless steel.  
                  Heat treated.



Bearing number RSTN	B	D	W	H	O	C	X	Ball diam	Maximum static radial load in pounds approx	Weight in pounds approx
	Bore + .0000 - .0005	Outside diam + .0000 - .0005	Ball width + .000 - .002	Housing width + .005 - .005	Ball flat diam	Chamfer + .015 - .000	Angle deg Min			
03	.1900	.5625	.281	.218	.335	.010	10	.437	5 000	.015
04	.2500	.6562	.343	.250	.364	.010	13	.500	7 680	.023
05	.3125	.7500	.375	.281	.460	.015	11	.594	10 530	.031
06	.3750	.8125	.406	.312	.475	.015	10	.625	13 100	.039
07	.4375	.9062	.437	.343	.530	.020	9	.687	16 620	.047
08	.5000	1.0000	.500	.390	.600	.020	9.5	.781	21 000	.070
09	.5625	1.0937	.562	.437	.670	.020	10	.875	27 500	.094
10	.6250	1.1875	.625	.500	.777	.020	8.5	1.000	33 750	.117
12	.7500	1.4375	.750	.593	1.000	.020	8.5	1.250	50 370	.203
14	.8750	1.5625	.875	.703	1.060	.025	9	1.375	66 870	.273
16	1.0000	1.7500	1.000	.797	1.200	.025	9	1.562	86 870	.382
20	1.2500	2.0000	1.093	.942	1.406	.025	6	1.781	117 120	.530
24	1.5000	2.4375	1.312	1.130	1.710	.030	6	2.156	175 000	.960
28	1.7500	2.8125	1.531	1.317	2.015	.030	6	2.531	238 750	1.480
32	2.0000	3.1875	1.750	1.505	2.280	.030	6	2.875	312 500	2.100

All dimensions given in inches

**NMB-Minebea UK Ltd.**  
**UNCONTROLLED**  
**COPY**

Add 'G' in part number for staking grooves in side faces of housing, eg. RSTNG 06.

Add 'C' after part number for cadmium plated housing, eg. RSTN 06C. Dimensions are met after plating.

Add 'G' after part number for lubrication groove in ball bore and inter-connecting holes to spherical surface, eg. RSTN 06G.

Add 'L' after part number for lubrication grooves in O.D. and internal spherical surface of housing together with inter-connecting hole, eg. RSTN 06L.

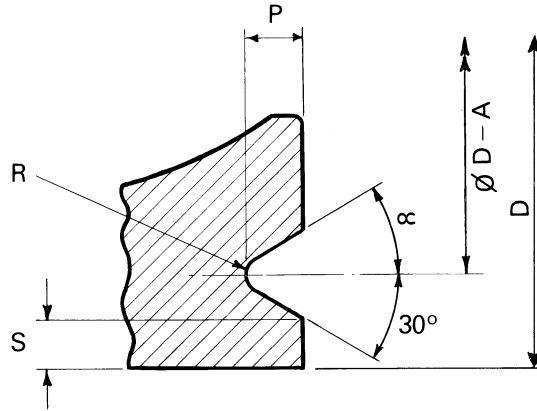
Add 'GL' after part number if both of previous features required, eg. RSTN 06GL.

For further details, refer to technical information at beginning of section.

Add 'D' after part number for dry film lubricant applied to bearing surface eg. RSTN 06D.

NMB-Minebea UK Ltd.  
**UNCONTROLLED**  
**COPY**

Bearing staking groove details



**Inch**

RSTNG RBTNG	RSTWG RBTWG RSTAG	P +.000 -.015	A +.010 -.000	R	S Min	$\alpha$ Min
03 - 04	03 - 05	.030	.060	.005 - .015	.010	30
05 - 07	06 - 10	.040	.098	.010 - .020	.020	30
08 - 32	12 - 32	.060	.122	.010 - .020	.020	30

Dimensions in inches

**Metric**

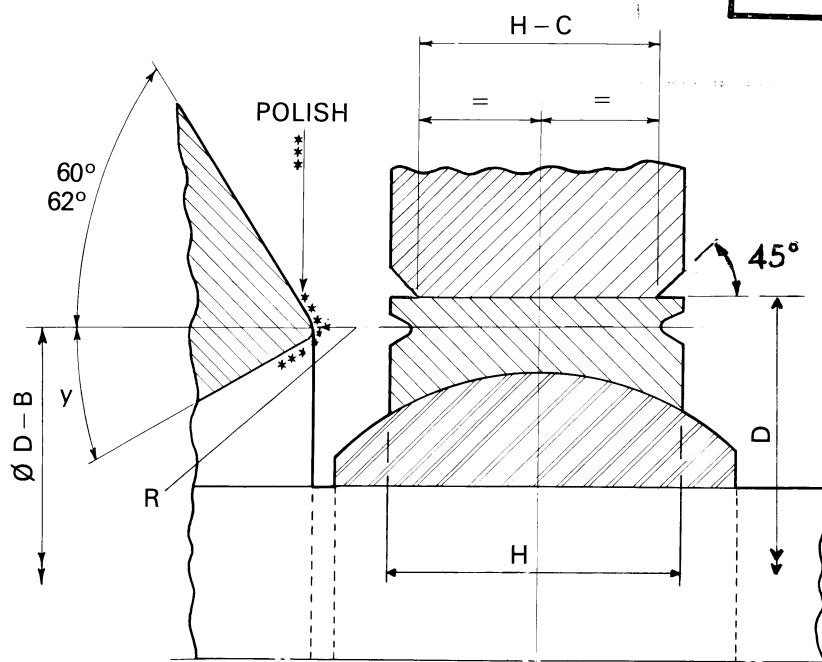
MSTNG	MSTWG	MSTLG	P +0 -0.2	A +0.1 -0	R	S Min	$\alpha$ +5 -5
05 - 06	06 - 08	12 - 20	0,7	1,7	0,2 - 0,3	,25	30
10 - 12	10 - 17	25 - 30	0,9	2,5	0,3 - 0,4	,50	30
22 - 30	20 - 50	35 - 50	1,4	3,1	0,3 - 0,4	,50	30

Dimensions in millimetres

NMB-Minebea UK Ltd.

**UNCONTROLLED  
COPY**

**Staking tool details**



**Inch**

RSTNG RBTNG	RSTWG RBTWG RSTAG	B + .000 - .010	R + .005 - .000	y +0 -2	C + .010 - .000
03-04	03-05	.060	.015	30	.060
05-07	06-10	.098	.020	30	.080
08-32	12-32	.122	.020	30	.120

Dimensions in inches

**Metric**

MSTNG	MSTWG	MSTLG	B +0 -0,1	R +0,1 -0	y +0 -2	C +0,2 -0
05-06	06-08	12-20	1,7	0,3	30	1,4
10-12	10-17	25-30	2,5	0,4	30	1,8
22-30	20-50	35-50	3,1	0,4	30	2,8

Dimensions in millimetres