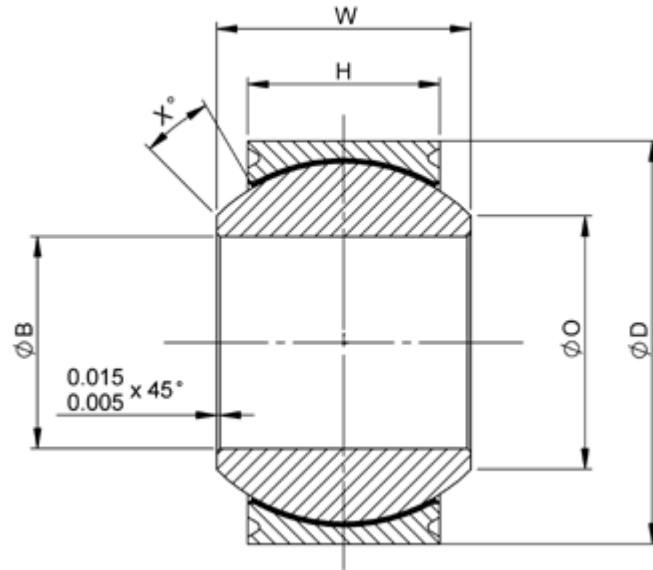


MS 14103 Wide Series Grooved RWDG--MS
 Menu

- P/N X-Ref
- Materials
- Clearance/Torque
- Staking Groove
- Limits & Fits
- Keyways



Bore code	B	D	H	W	O	X°	Ball dia nom	Max static load lb		Weight lb max
								Radial	Axial	
	+0.000 -0.005	+0.000 -0.005	+0.005 -0.005	+0.000 -0.002	min					
03	.1900	.6250	.327	.437	.300	15	.531	2500	1770	0.031
04	.2500	.6250	.327	.437	.300	15	.531	5500	1770	0.031
05	.3125	.6875	.317	.437	.360	14	.594	9400	1640	0.035
06	.3750	.8125	.406	.500	.466	8	.687	13700	2630	0.060
07A	.4375	.9062	.442	.562	.537	10	.781	19700	3650	0.080
07	.4375	.9375	.442	.562	.537	10	.781	20700	3650	0.080
08	.5000	1.0000	.505	.625	.607	9	.875	21400	4970	0.100
09	.5625	1.1250	.536	.687	.721	10	1.000	26600	5370	0.135
10	.6250	1.1875	.567	.750	.747	12	1.062	29000	6130	0.160
12	.7500	1.3750	.630	.875	.845	13	1.250	37000	7730	0.240
14	.8750	1.6250	.755	.875	.995	6	1.375	65200	10800	0.350
16	1.0000	2.1250	1.005	1.375	1.269	12	1.875	104000	19300	0.970

Dimensions in inches

NMB Head Office UK Germany France Italy Singapore USA
 Contact Details