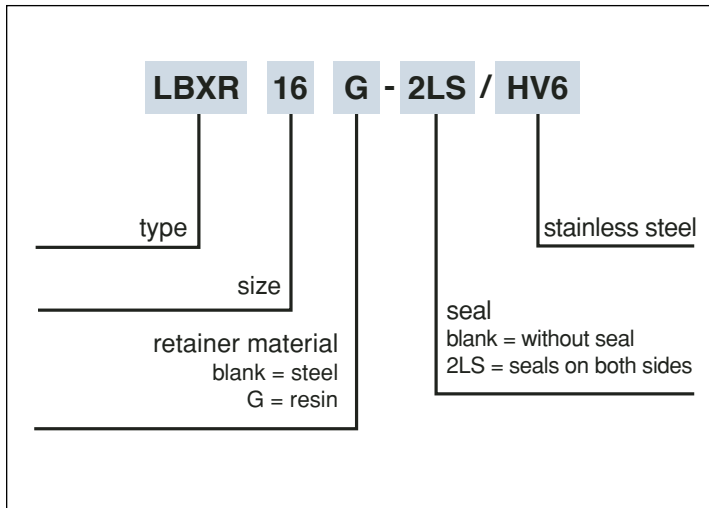


LBXR Type

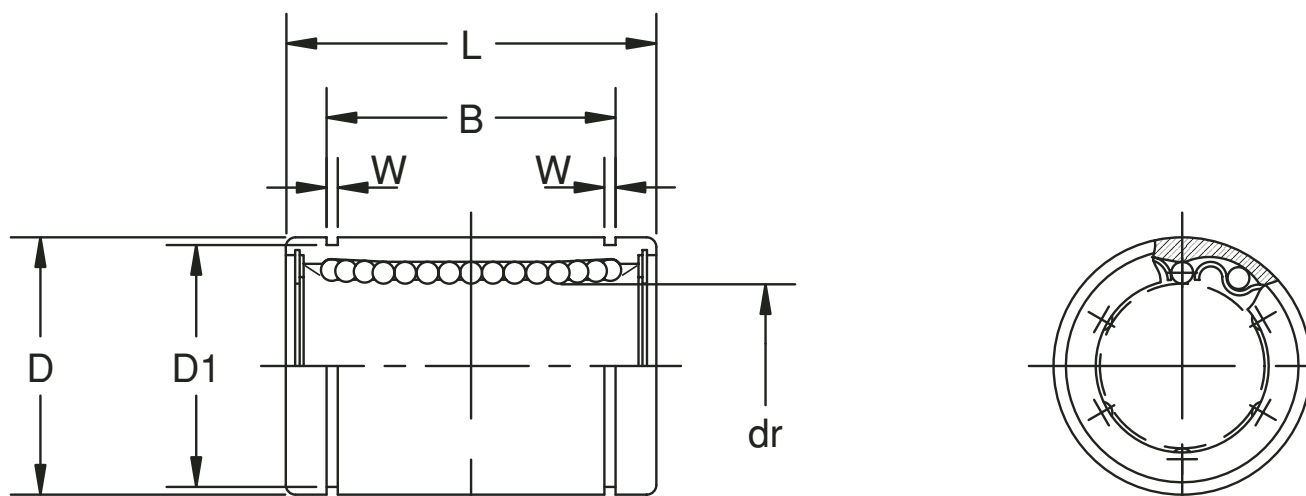
Standard Type

This type is an inch dimension series mainly used in the U.S.



Part Number			Number of ball circuits	dr		D	
Standard		Stainless Steel		inch mm	tolerance	inch mm	tolerance
Steel retainer	Resin retainer	Resin retainer			inch/ μm		inch/ μm
-	-	LBXR 2G/HV6	4	.1250 3.175	0 -.00035	.3125 7.938	0 -.00040
-	-	LBXR 3G/HV6	4	.1875 4.763	0 -8	.3750 9.525	0 -9
LBXR 4	LBXR 4G	LBXR 4G/HV6	3*	.2500 6.350	0 -.00040	.5000 12.700	⁰ -.00045 ₀ -11
LBXR 6	LBXR 6G	LBXR 6G/HV6	4	.3750 9.525		.6250 15.875	0
LBXR 8	LBXR 8G	LBXR 8G/HV6	4	.5000 12.700		.8750 22.225	-.00050 0
LBXR 10	LBXR 10G	LBXR 10G/HV6	4	.625 15.875	0 -9	1.1250 28.575	-13
LBXR 12	LBXR 12G	LBXR 12G/HV6	5	.7500 19.050		1.2500 31.750	0 -.00065
LBXR 16	LBXR 16G	LBXR 16G/HV6	6	1.0000 25.400		1.5625 39.688	0 -16
LBXR 20	LBXR 20G	LBXR 20G/HV6	6	1.2500 31.750	0 -.00050	2.0000 50.800	0 -.00075
LBXR 24	LBXR 24G	LBXR 24G/HV6	6	1.5000 38.100		2.3750 60.325	0 -19
LBXR 32	LBXR 32G	LBXR 32G/HV6	6	2.0000 50.800		3.0000 76.200	0
LBXR 40	-	-	6	2.5000 63.500	0 -.00060	3.7500 95.250	-.00090 0
LBXR 48	-	-	6	3.0000 76.200		4.5000 114.300	-22
LBXR 64	-	-	6	4.0000 101.600		⁰ -.00080 ₀ -20	6.0000 152.400

*4 rows for resin retainer type.



Major dimensions						eccentricity		radial clearance (maximum) inch/ μ m	Basic load rating		mass g	shaft diameter inch mm
L		B		W	D ₁	precision inch/ μ m	high inch/ μ m		dynamic C lbs	static C ₀ lbs		
inch mm	tolerance inch/mm	inch mm	tolerance inch/mm	inch mm	inch mm							
.5000 12.700		.3681 9.35		.0280 0.710	.2902 7.370	-		-	13	17	2.8	1/8 3.175
.5625 14.275		.4311 10.95		.0280 0.710	.3520 8.940							
.7500 19.050	0 -.008	.5110 12.98	0 -.008	.0390 0.992	.4687 11.906			-	46	59	9.5	1/4 6.350
.8750 22.225		.6358 16.15		.0390 0.992	.5880 14.935							
1.2500 31.750	0 -0.2	.9625 24.46	0 -0.2	.0459 1.168	.8209 20.853			-	114	176	42	1/2 12.700
1.5000 38.100		1.1039 28.04		.0559 1.422	1.0590 26.899							
1.6250 41.275		1.1657 29.61		.0559 1.422	1.1760 29.870			-	193	307	104	3/4 19.050
2.2500 57.150		1.7547 44.57		.0679 1.727	1.4687 37.306							
2.6250 66.675	0	2.0047 50.92	0	.0679 1.727	1.8859 47.904			-	352	615	465	1-1/4 31.750
3.0000 76.200	-.012 0	2.4118 61.26	-.012 0	0.859 2.184	2.2389 56.870							
4.0000 101.600	-0.3	3.1917 81.07	-0.3	.1029 2.616	2.8379 72.085			-	858	1,784	1,310	2 50.800
5.0000 127.000		3.9760 100.99		.1200 3.048	3.5519 90.220							
6.0000 152.400	0 -.016	4.726 120.04	0 -.016	.1200 3.048	4.3100 109.474			-	1,651	3,595	4,380	3 76.200
8.0000 203.200	0 -0.4	6.258 158.95	0 -0.4	.1389 3.530	5.745 145.923							

1kg=2.205lbs