

SKR



Caged Ball LM Guide Actuator

B Product Specifications

Dimensional Drawing, Dimensional Table

Model SKR33 Standard Type Long Block	B-292
Model SKR33 (with a Cover) Long Block	B-293
Model SKR33 Standard Type Short Block	B-294
Model SKR33 (with a Cover) Short Block	B-295
Model SKR46 Standard Type Long Block	B-296
Model SKR46 (with a Cover) Long Block	B-297
Model SKR46 Standard Type Short Block	B-298
Model SKR46 (with a Cover) Short Block	B-299

Model Number Coding	B-300
Mass of Moving Element	B-300

Options	B-301
Sensor	B-308
Motor Bracket	B-336

A Technical Descriptions of the Products (Separate)

Technical Descriptions

Structure and features	A-416
Caged Ball/Roller Technology	A-419
Types and Features	A-421
Load Ratings in All Directions and Permissible Moment	A-422
Lubrication	A-425
Service Life	A-426
Accuracy Standards	A-428

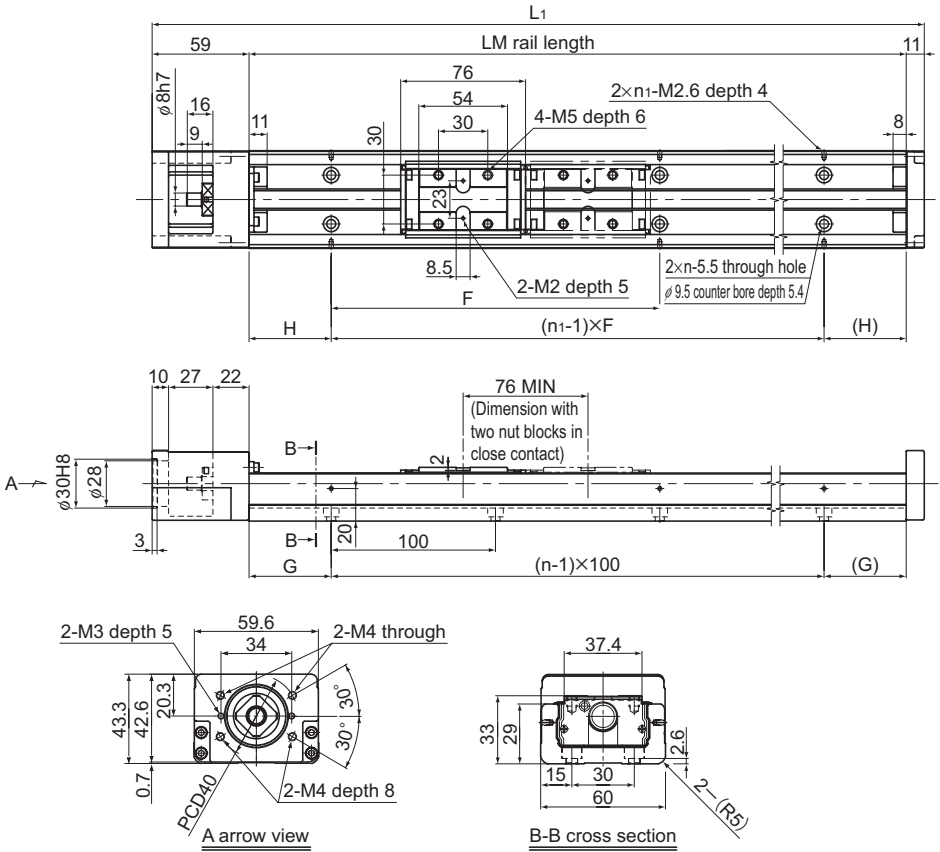
Options	A-430
Cover	A-431
Sensor	A-433
Motor Bracket	A-434

* Please see the separate "A Technical Descriptions of the Products".

Model SKR33 Standard Type

Model SKR33□□A (with a Single Long Block)

Model SKR33□□B (with Two Long Blocks)



LM rail length (mm)	Overall length L1 (mm)	Available stroke range (mm)		H (mm)	G (mm)	F (mm)	n	n1	Overall main unit mass (kg)	
		Type A	Type B						Type A	Type B
150	220	55	—	25	25	100	2	2	1.7	—
200	270	105	—	50	50	100	2	2	2.1	—
300	370	205	129	50	50	200	3	2	2.8	3.1
400	470	305	229	100	50	200	4	2	3.5	3.8
500	570	405	329	50	50	200	5	3	4.2	4.5
600	670	505	429	100	50	200	6	3	5.0	5.3
700	770	605	529	50	50	200	7	4	5.7	6.0

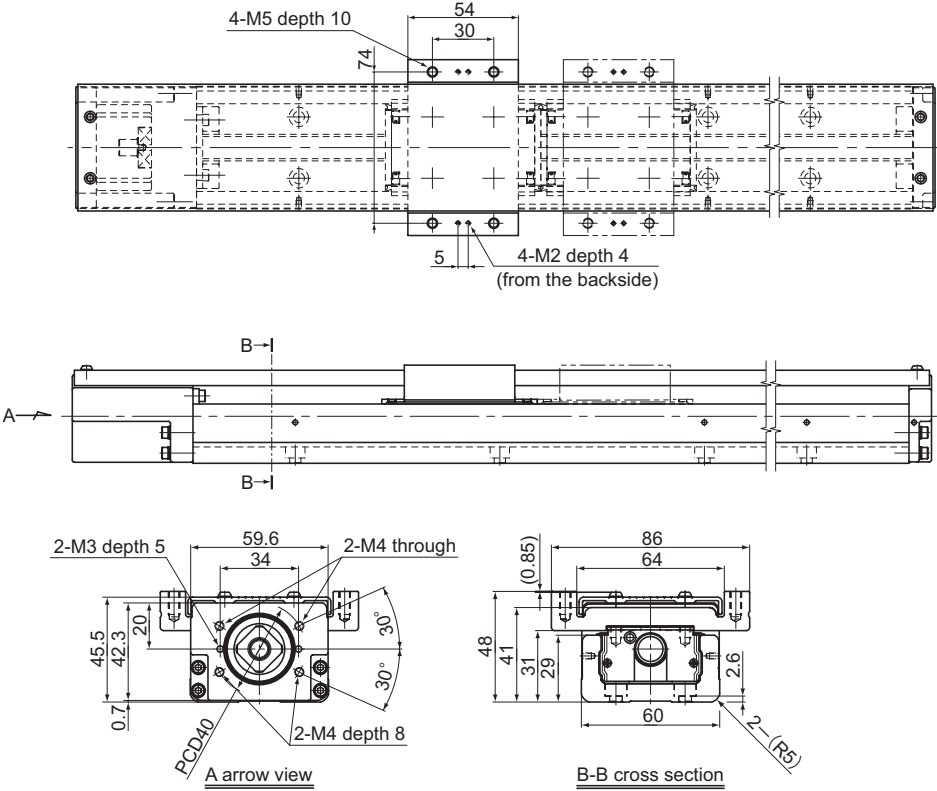
Note) The available stroke range of model SKR 33 □□ B indicates the value when two blocks are used in close contact with each other.

For model number coding, see B-300.

Model SKR33 (with a Cover)

Model SKR33□□A (with a Single Long Block)

Model SKR33□□B (with Two Long Blocks)



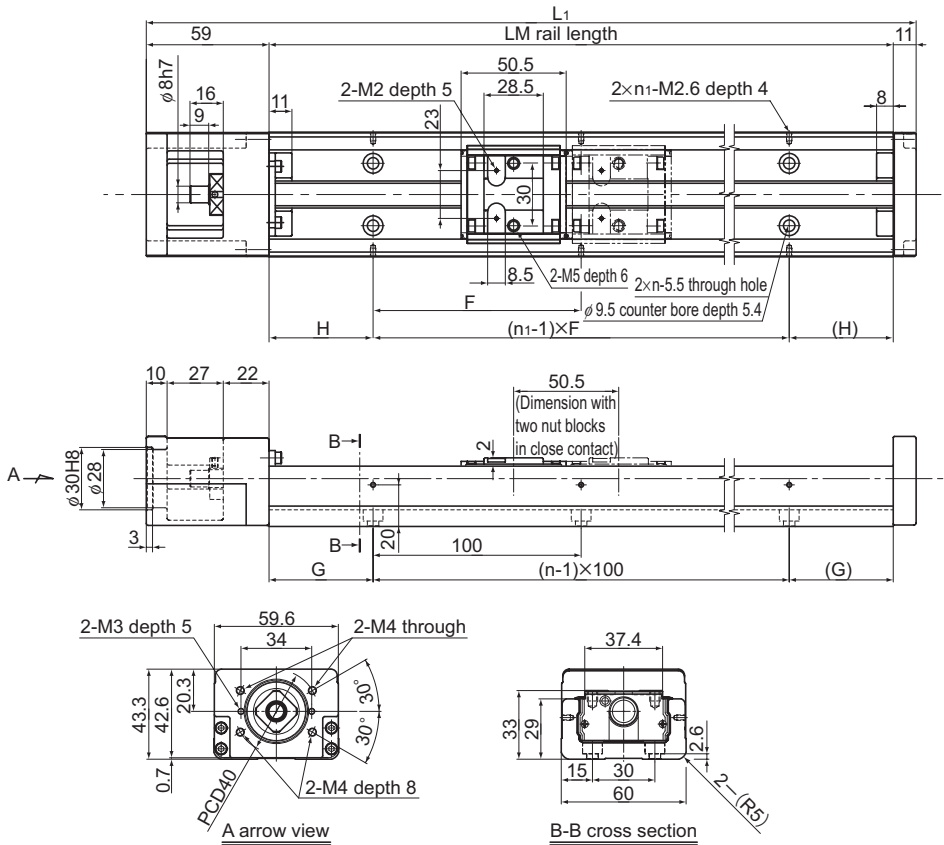
LM rail length (mm)	Overall length L (mm)	Available stroke range (mm)		H (mm)	G (mm)	F (mm)	n	n ₁	Overall main unit mass (kg)	
		Type A	Type B						Type A	Type B
150	220	55	—	25	25	100	2	2	1.9	—
200	270	105	—	50	50	100	2	2	2.3	—
300	370	205	129	50	50	200	3	2	3.1	3.5
400	470	305	229	100	50	200	4	2	3.8	4.2
500	570	405	329	50	50	200	5	3	4.6	5.0
600	670	505	429	100	50	200	6	3	5.3	5.7
700	770	605	529	50	50	200	7	4	6.1	6.5

Note) The available stroke range of model SKR 33 □□ B indicates the value when two blocks are used in close contact with each other.
For model number coding, see B-300.

Model SKR33 Standard Type

Model SKR33□□C (with a Single Short Block)

Model SKR33□□D (with Two Short Blocks)



LM rail length (mm)	Overall length L_1 (mm)	Available stroke range (mm)		H (mm)	G (mm)	F (mm)	n	n_1	Overall main unit mass (kg)	
		Type C	Type D						Type C	Type D
150	220	80.5	30	25	25	100	2	2	1.6	1.8
200	270	130.5	80	50	50	100	2	2	2.0	2.1
300	370	230.5	180	50	50	200	3	2	2.7	2.8
400	470	330.5	280	100	50	200	4	2	3.4	3.6
500	570	430.5	380	50	50	200	5	3	4.1	4.3
600	670	530.5	480	100	50	200	6	3	4.8	5.0
700	770	630.5	580	50	50	200	7	4	5.5	5.7

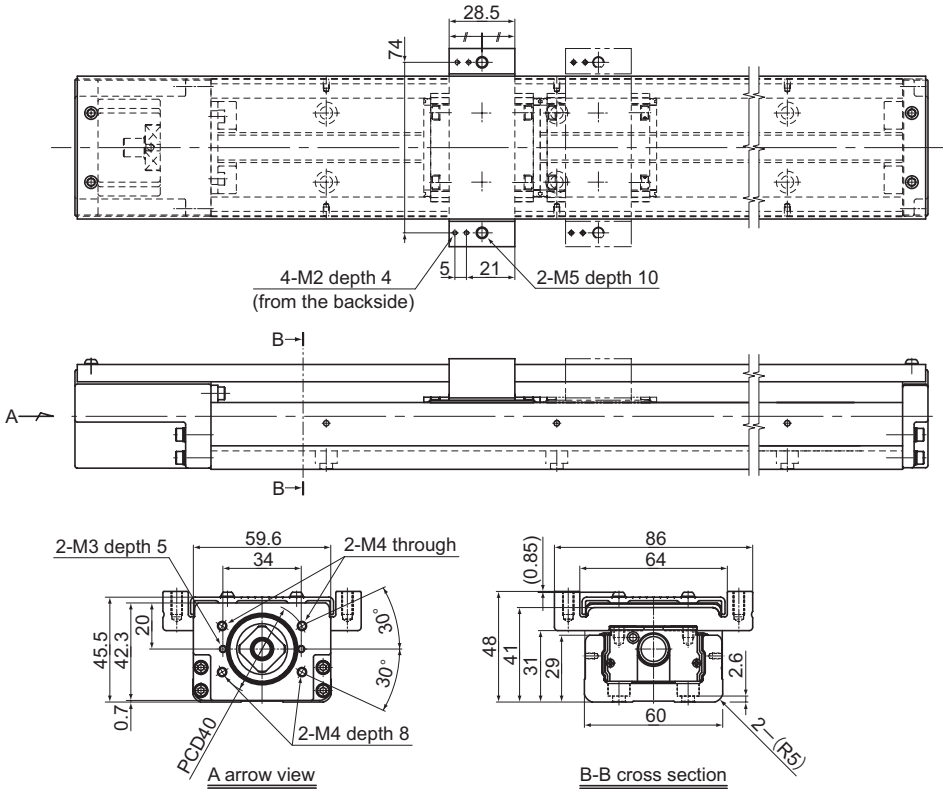
Note) The available stroke range of model SKR33□□D indicates the value when two blocks are used in close contact with each other.

For model number coding, see B-300.

Model SKR33 (with a Cover)

Model SKR33□□C (with a Single Short Block)

Model SKR33□□D (with Two Short Blocks)



LM Guide Actuator

LM rail length (mm)	Overall length L _t (mm)	Available stroke range (mm)		H (mm)	G (mm)	F (mm)	n	n ₁	Overall main unit mass (kg)	
		Type C	Type D						Type C	Type D
150	220	80.5	30	25	25	100	2	2	1.8	2.0
200	270	130.5	80	50	50	100	2	2	2.2	2.3
300	370	230.5	180	50	50	200	3	2	2.9	3.1
400	470	330.5	280	100	50	200	4	2	3.7	3.8
500	570	430.5	380	50	50	200	5	3	4.4	4.6
600	670	530.5	480	100	50	200	6	3	5.2	5.3
700	770	630.5	580	50	50	200	7	4	5.9	6.1

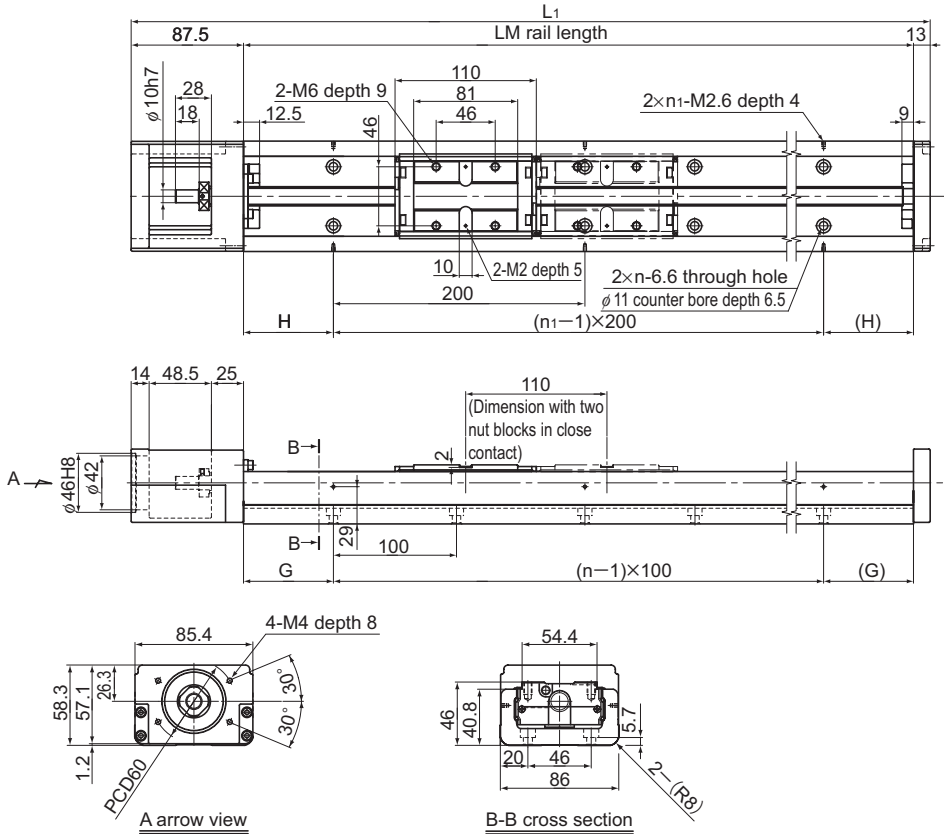
Note) The available stroke range of model SKR33□□D indicates the value when two blocks are used in close contact with each other.

For model number coding, see B-300.

Model SKR46 Standard Type

Model SKR46□□A (with a Single Long Block)

Model SKR46□□B (with Two Long Blocks)



LM rail length (mm)	Overall length L_1 (mm)	Available stroke range (mm)		H (mm)	G (mm)	n	n_1	Overall main unit mass (kg)	
		Type A	Type B					Type A	Type B
340	440.5	208.5	98.5	70	70	3	2	6.4	7.4
440	540.5	308.5	198.5	20	70	4	3	7.8	8.7
540	640.5	408.5	298.5	70	70	5	3	9.2	10.1
640	740.5	508.5	398.5	20	70	6	4	10.6	11.5
740	840.5	608.5	498.5	70	70	7	4	12.0	12.9
940	1040.5	808.5	698.5	70	70	9	5	14.8	15.7

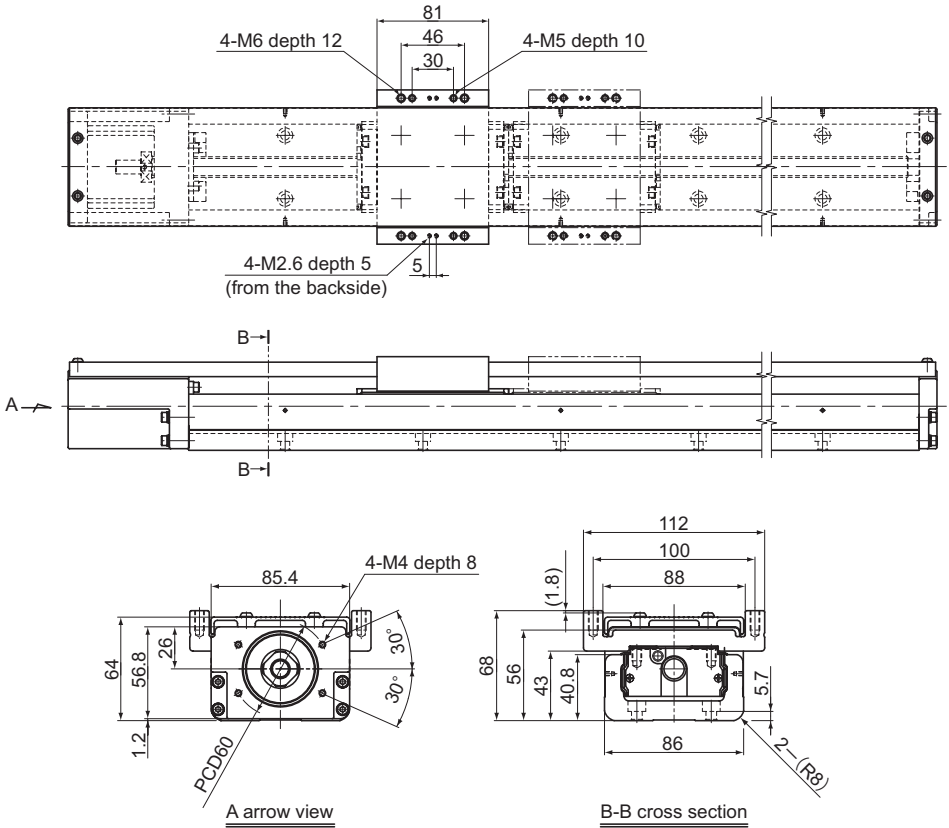
Note) The available stroke range of model SKR 46 □□ B indicates the value when two blocks are used in close contact with each other.

For model number coding, see B-300.

Model SKR46 (with a Cover)

Model SKR46□□A (with a Single Long Block)

Model SKR46□□B (with Two Long Blocks)



LM Guide Actuator

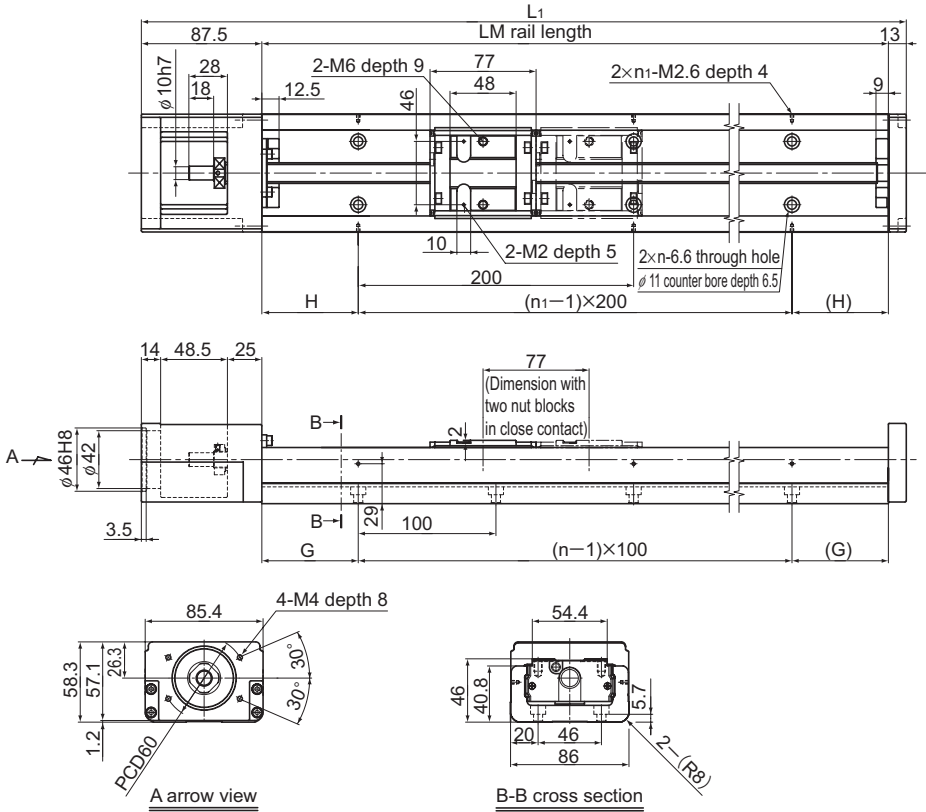
LM rail length (mm)	Overall length L _t (mm)	Available stroke range (mm)		H (mm)	G (mm)	n	n ₁	Overall main unit mass (kg)	
		Type A	Type B					Type A	Type B
340	440.5	208.5	98.5	70	70	3	2	7.1	8.3
440	540.5	308.5	198.5	20	70	4	3	8.6	9.8
540	640.5	408.5	298.5	70	70	5	3	10.0	11.3
640	740.5	508.5	398.5	20	70	6	4	11.5	12.7
740	840.5	608.5	498.5	70	70	7	4	13.0	14.2
940	1040.5	808.5	698.5	70	70	9	5	16.0	17.2

Note) The available stroke range of model SKR 46 □□ B indicates the value when two blocks are used in close contact with each other.
 For model number coding, see B-300.

Model SKR46 Standard Type

Model SKR46 □□ C (with a Single Short Block)

Model SKR46 □□ D (with Two Short Blocks)



LM rail length (mm)	Overall length L ₁ (mm)	Available stroke range (mm)		H (mm)	G (mm)	n	n ₁	Overall main unit mass (kg)	
		Type C	Type D					Type C	Type D
340	440.5	241.5	164.5	70	70	3	2	6.1	6.7
440	540.5	341.5	264.5	20	70	4	3	7.5	8.1
540	640.5	441.5	364.5	70	70	5	3	8.9	9.5
640	740.5	541.5	464.5	20	70	6	4	10.3	10.8
740	840.5	641.5	564.5	70	70	7	4	11.7	12.2
940	1040.5	841.5	764.5	70	70	9	5	14.5	15.0

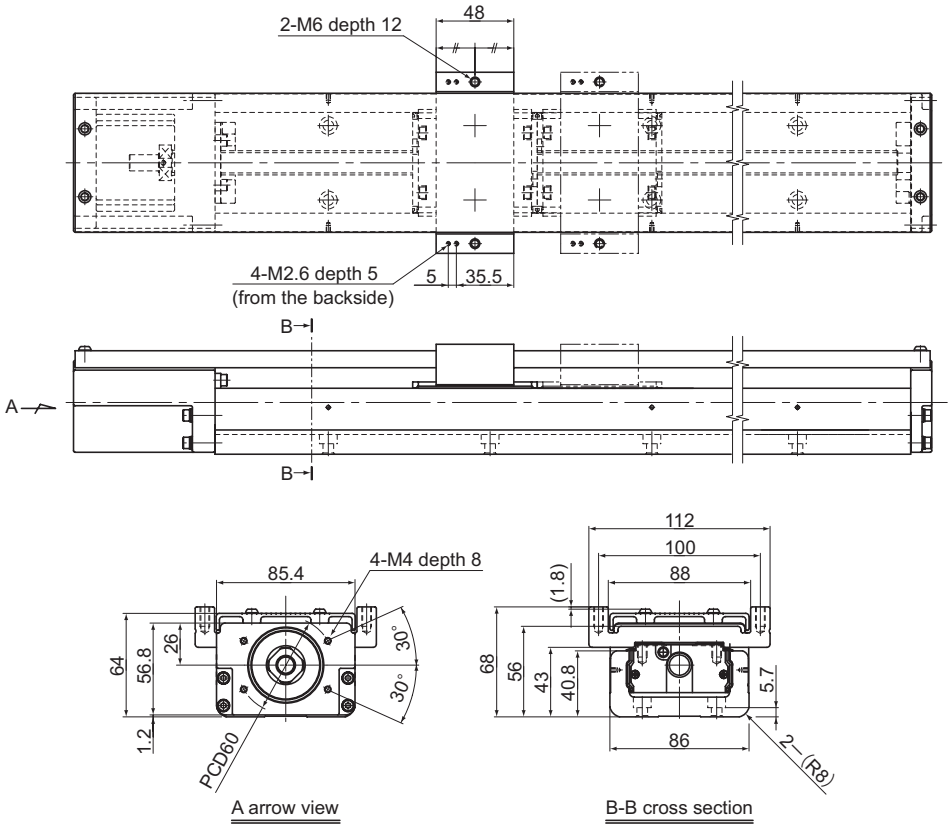
Note) The available stroke range of model SKR46 □□ D indicates the value when two blocks are used in close contact with each other.

For model number coding, see B-300.

Model SKR46 (with a Cover)

Model SKR46□□C (with a Single Short Block)

Model SKR46□□D (with Two Short Blocks)



LM Guide Actuator

LM rail length (mm)	Overall length L _t (mm)	Available stroke range (mm)		H (mm)	G (mm)	n	n ₁	Overall main unit mass (kg)	
		Type C	Type D					Type C	Type D
340	440.5	241.5	164.5	70	70	3	2	6.6	7.4
440	540.5	341.5	264.5	20	70	4	3	8.1	8.9
540	640.5	441.5	364.5	70	70	5	3	9.6	10.3
640	740.5	541.5	464.5	20	70	6	4	11.0	11.8
740	840.5	641.5	564.5	70	70	7	4	12.5	13.3
940	1040.5	841.5	764.5	70	70	9	5	15.5	16.3

Note) The available stroke range of model SKR46 □□ D indicates the value when two blocks are used in close contact with each other.

For model number coding, see B-300.

Model Number Coding

Model number coding

SKR33 10 A +400L P 0 - 0 0 0 0

Model No.

Motor bracket type
(housing A, intermediate flange) See B-337 onward.

Sensor specification (see table 1)

With/without a cover

0: none, 1: with a cover, 2: with a bellows

With/without a motor

0: none, 1: with a motor (mounted at THK)

Accuracy grade

No Symbol: Normal grade, H: High accuracy grade, P: Precision grade

LM rail length (in mm) See A-418.

Block type See A-424.

Ball screw lead (in mm) See A-418.

Table1 With/without a sensor

Symbol	Description	Type
0	None	—
1	With sensor rail	—
2	Photo sensor	EE-SX 671 (Omron)
4	Proximity Sensor a-contact (ON when close)	GL-12F (SUNX)
5	Proximity Sensor a-contact (ON when close)	GXL-N12F (SUNX)
6	Photo sensor	EE-SX 674 (Omron)
7	Proximity Sensor a-contact (ON when close)	APM-D3A1-001 (Yamatake)
8	Proximity Sensor a-contact (ON when close)	GL-N12F (SUNX)
9	Proximity Sensor b-contact (ON when away)	GL-N12FB (SUNX)
A	Proximity Sensor b-contact (ON when away)	GXL-N12FB (SUNX)
B	Proximity Sensor b-contact (ON when away)	APM-D3B1-003 (Yamatake)

Mass of Moving Element

Table2 shows the mass of the nut block and sub table of model SKR.

Table2 Mass of the Nut Block and Sub Table of SKR

Unit: kg

Model No.	Block A (long block) type		Block C (short block) type	
	Nut block	Sub table	Nut block	Sub table
SKR33	0.31	0.13	0.17	0.07
SKR46	0.91	0.34	0.57	0.20