

SRW



Caged Roller LM Guide

B Product Specifications

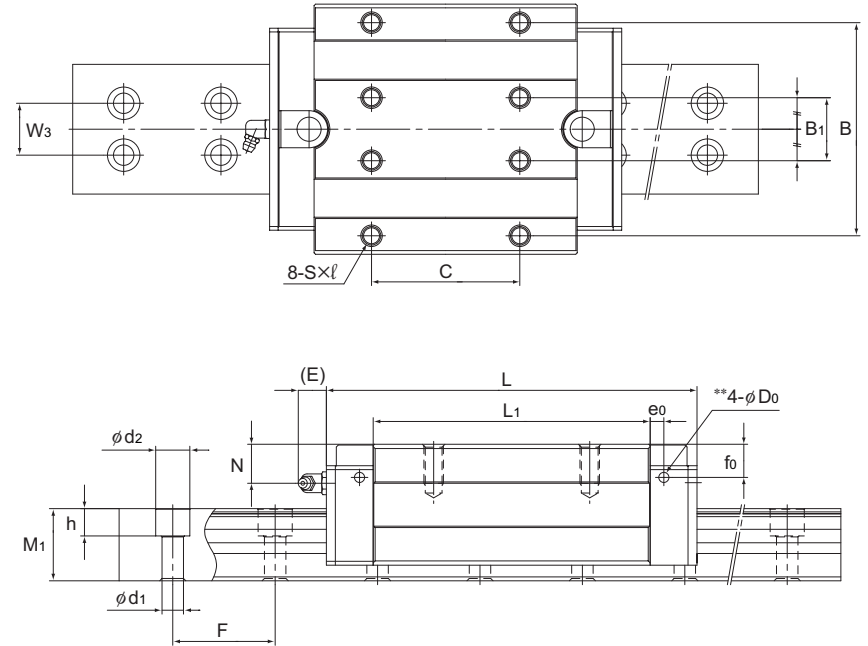
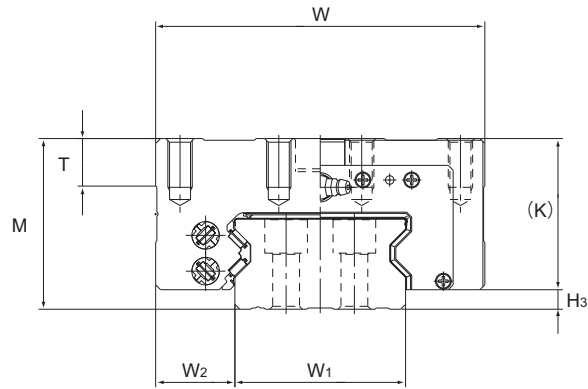
Dimensional Drawing, Dimensional Table	
Model SRW-LR	B-220
Standard Length and Maximum Length of the LM Rail	
	B-222
Options	
The LM Block Dimension (Dimension L) with LaCS and Seals Attached	B-230
Dedicated Bellows JSRW for Model SRW ..	B-247
Cap C	B-250
LM Block Dimension (Dimension L) with QZ Attached	B-253
Greasing Hole for Model SRW	B-259

A Technical Descriptions of the Products (Separate)

Technical Descriptions	
Structure and features	A-313
Types and Features	A-314
Rated Loads in All Directions	A-314
Equivalent Load	A-315
Service Life	A-100
Radial Clearance	A-115
Accuracy Standards	A-128
Shoulder Height of the Mounting Base and the Corner Radius	A-329
Permissible Error of the Mounting Surface ..	A-316

* Please see the separate "A Technical Descriptions of the Products".

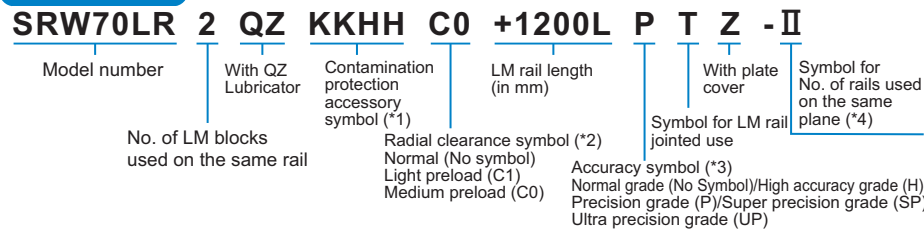
Model SRW-LR



Unit: mm

Model No.	Outer dimensions			LM block dimensions														Grease nipple	H ₃	LM rail dimensions					Basic load rating		Static permissible moment kN·m*					Mass	
	Height	Width	Length	B	B ₁	C	S×ℓ	L ₁	T	K	N	E	e ₀	f ₀	D ₀	Width	Height			Pitch	Length*	C	C ₀	M _A		M _B		M _C	LM block	LM rail			
	M	W	L													W ₁ 0 -0.05	W ₂			W ₃	M ₁	F	d ₁ ×d ₂ ×h	Max	kN	kN	1 block	Double blocks	1 block	Double blocks	1 block	kg	kg/m
SRW 70LR	70	135	190	115	34	80	M10×20	142	20	62	20	16	7	17	5.2	B-PT1/8	8	70	32.5	28	37	52.5	11×17.5×14	3090	115	256	6.13	32.2	6.13	32.2	10.2	6.3	18.6
SRW 85LR	80	165	235	140	40	95	M12×19	179.2	28	70	22	16	9	17.7	5.2	B-PT1/8	10	85	40	32	43	60	14×20×17	3060	167	366	10.8	57	10.8	57	17.5	11.0	26.7
SRW 100LR	100	200	303	172	50	110	M14×20	229.8	20	88.5	27	16	9	22.4	5.2	B-PT1/8	11.5	100	50	38	54	75	16×23×20	3000	278	599	22.7	120	22.7	120	33.9	21.6	35.9

Model number coding



(*1) See contamination protection accessory on A-368. (*2) See A-115. (*3) See A-128. (*4) See A-59.

- Note) 1. Model SRW is attached with "SS" as standard.
 2. This model number indicates that a single-rail unit constitutes one set. (i.e., required number of sets when 2 rails are used in parallel is 2 at a minimum.)
 3. For the standard LM rail length, see Table 1 on B-222.
 4. The greasing hole on the top face and the pilot hole of the side nipple** are not drilled through in order to prevent foreign material from entering the block.
 For details, see B-259.
 5. The removing/mounting jig is not provided as standard. When desiring to use it, contact THK.

The maximum length under "Length*" indicates the standard maximum length of an LM rail. (See B-222.)
 Static permissible moment*: 1 block: static permissible moment value with 1 LM block
 Double blocks: static permissible moment value with 2 blocks closely contacting with each other

Standard Length and Maximum Length of the LM Rail

Table1 shows the standard lengths and the maximum lengths of model SRW variations. If the maximum length of the desired LM rail exceeds them, jointed rails will be used.

For the G dimension when a special length is required, we recommend selecting the corresponding G value from the table. The longer the G dimension is, the less stable the G area may become after installation, thus causing an adverse impact to accuracy.

If desiring connected use of this model, be sure to indicate the overall length so that we can manufacture the product without leaving a level difference in the joint.

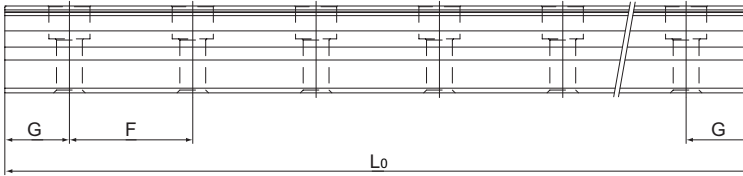


Table1 Standard Length and Maximum Length of the LM Rail for Model SRW

Unit: mm

Model No.	SRW 70	SRW 85	SRW 100
LM rail standard length (L ₀)	570	780	1270
	675	900	1570
	780	1020	2020
	885	1140	2620
	990	1260	
	1095	1380	
	1200	1500	
	1305	1620	
	1410	1740	
	1515	1860	
	1620	1980	
	1725	2100	
	1830	2220	
	1935	2340	
	2040	2460	
	2145	2580	
	2250	2700	
	2355	2820	
	2460	2940	
	2565	3060	
2670			
2775			
2880			
2985			
Standard pitch F	52.5	60	75
G	22.5	30	35
Max length	3090	3060	3000

Note1) The maximum length varies with accuracy grades. Contact THK for details.

Note2) If jointed rails are not allowed and a greater length than the maximum values above is required, contact THK.