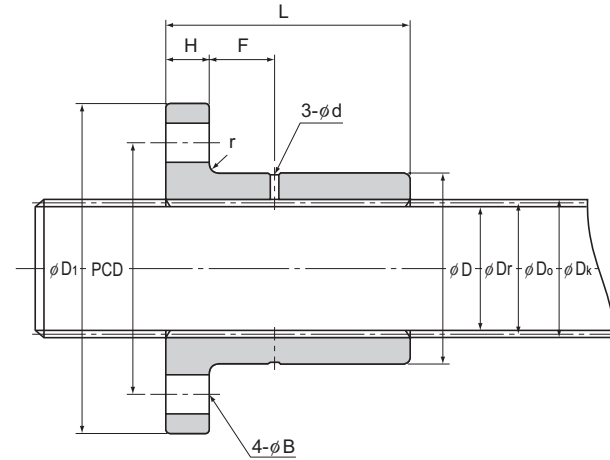
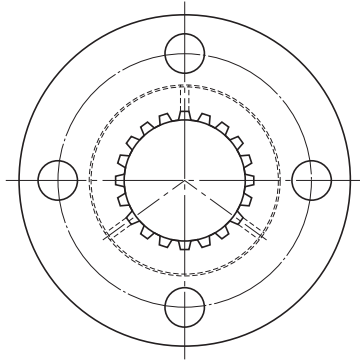


Model DPM



Unit: mm

Spline Nut Model No.	Outer dimensions			Spline nut dimensions							Spline shaft Model No.	Spline details				Standard shaft length	Maximum shaft length	Dynamic permissible torque T ^{Note} N-m	Mass	
	Outer diameter		Length L	Flange diameter D ₁	H	B	PCD	r	F	d		Pitch diameter D _o	Major diameter D _s	Minor diameter D _r	Number of teeth Z				Spline Nut g	Spline Shaft kg/m
	D	Tolerance h9																		
DPM 1220	22	0	20	44	6	5.4	31	1.5	7	1.5	SS 12	12	12.8	10.9	16	1500	1500	17.6	80	0.9
DPM 1230			30															26.5	90	
DPM 1520	22	-0.052	20	44	6	5.4	31	1.5	7	1.5	SS 15	15	16.1	13.5	16	1500	2000	30.4	70	1.4
DPM 1530			30															46.1	80	
DPM 1723	28	0	23	51	7	6.6	38	1.5	8	1.5	SS 17	17	18.2	15.4	16	1500	2000	43.1	120	1.7
DPM 1735			35															65.7	150	
DPM 2028	32	0	28	56	7	6.6	42	1.5	10.5	1.5	SS 20	20	21.5	18.3	16	1500	3200	70.6	160	2.5
DPM 2040			40															100	200	
DPM 2536	36	-0.062	36	61	8	6.6	47	2	14	2	SS 25	25	26.9	22.6	16	1500	3200	152	220	3.8
DPM 2550			50															211	270	
DPM 3040	44	0	40	76	10	9	58	2	15	2	SS 30	30	31.8	28.2	20	1500	3200	212	400	5.5
DPM 3056			56															297	480	
DPM 3544	52	0	44	84	10	9	66	2.5	17	2.5	SS 35	35	37.1	32.8	20	1500	3200	325	560	7.5
DPM 3560			60															443	670	
DPM 4050	58	0	50	98	12	11	76	2.5	19	3	SS 40	40	42.4	37.5	20	1500	3200	480	830	9.8
DPM 4068			68															673	970	
DPM 4555	64	-0.074	55	104	12	11	80	2.5	21.5	3	SS 45	45	47.7	42.1	20	1500	3200	680	980	12.4
DPM 4575			75															927	1110	
DPM 5060	68	0	60	109	12	11	85	2.5	24	3.5	SS 50	50	53	46.8	20	1500	3200	910	1080	15.4
DPM 5080			80															1220	1290	

Note) The dynamic permissible torque (T) indicates the torque at which the contact surface pressure on the spline teeth is 9.8 N/mm².
Clearance in the rotational direction: $\alpha \leq 20'$ MAX

Model number coding

Combination of spline nut and spline shaft

2 DPM2040 +360L

Overall spline shaft length (in mm)

Model No. of spline nut

Number of spline nuts used on the same shaft

Model number coding

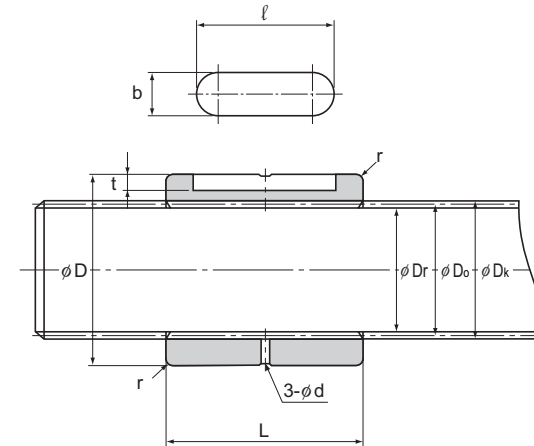
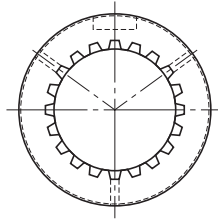
Spline shaft

SS20 +1500L

Overall spline shaft length (in mm)

Model number of spline shaft

Model DP



Unit: mm

Spline Nut Model No.	Outer dimensions			Spline nut dimensions						Spline shaft Model No.	Spline details				Standard shaft length	Maximum shaft length	Dynamic permissible torque T^{Note} N-m	Mass	
	Outer diameter		L 0 -0.3	Keyway dimensions				Pitch diameter D_p	Major diameter D_e		Minor diameter D_f	Number of teeth Z	Spline Nut g	Spline Shaft kg/m					
	D	Tolerance h9		b	Tolerance N9	t	l											d	r
DP 12	22	0 -0.052	22	4	0 -0.030	2	16	1.5	1	SS 12	12	12.8	10.9	16	1500	1500	19.6	40	0.9
DP 15	22		22	4		2	16	1.5	1	SS 15	15	16.1	13.5	16	1500	2000	33.3	30	1.4
DP 17	28	0 -0.062	26	5	0 -0.036	2.5	18	1.5	1	SS 17	17	18.2	15.4	16	1500	2000	48	65	1.7
DP 20	32		31	7		2.5	22	1.5	1	SS 20	20	21.5	18.3	16	1500	3200	77.5	100	2.5
DP 25	36	0 -0.062	40	7	0 -0.036	2.5	26	2	1	SS 25	25	26.9	22.6	16	1500	3200	169	135	3.8
DP 30	44		45	10		4	32	2	1.5	SS 30	30	31.8	28.2	20	1500	3200	238	230	5.5
DP 35	52	0 -0.074	49	12	0 -0.043	4.5	40	2.5	1.5	SS 35	35	37.1	32.8	20	1500	3200	362	360	7.5
DP 40	58		57	15		5	42	3	1.5	SS 40	40	42.4	37.5	20	1500	3200	547	510	9.8
DP 45	64	0 -0.074	62	15	0 -0.043	5	48	3	1.5	SS 45	45	47.7	42.1	20	1500	3200	767	640	12.4
DP 50	68		67	15		5	52	3.5	1.5	SS 50	50	53	46.8	20	1500	3200	1020	710	15.4

Note) The dynamic permissible torque (T) indicates the torque at which the contact surface pressure on the spline teeth is 9.8 N/mm².
Clearance in the rotational direction: $\alpha \leq 20'$ MAX

Model number coding

Combination of spline nut and spline shaft

2 DP20 +360L
 |
 Overall spline shaft length (in mm)
 |
 Model No. of spline nut
 |
 Number of spline nuts used on the same shaft

Model number coding

Spline shaft

SS20 +1500L
 |
 Overall spline shaft length (in mm)
 |
 Model number of spline shaft