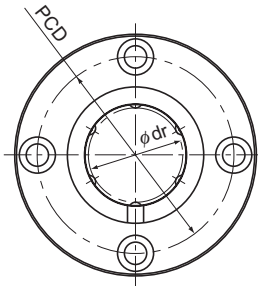
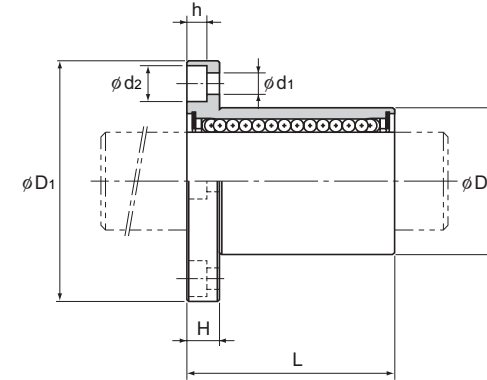


Model LMF



Model LMF



Unit: mm

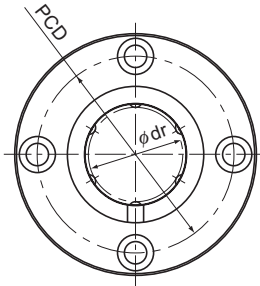
Model No.	Ball rows	Main dimensions										Flange perpendicularity	Eccentricity (max)	Radial clearance tolerance	Basic load rating		Mass g				
		Inscribed bore diameter		Outer diameter		Length		Flange diameter		H	PCD				Mounting hole	μm		μm	μm	C N	C ₀ N
		dr	Tolerance	D	Tolerance	L	Tolerance	D ₁	Tolerance												
LMF 6	4	6	0 -0.009	12	0 -0.011	19	0 -0.2	28	0 -0.2	5	20	3.4×6.5×3.3	12	12	-5	206	265	26.5			
LMF 8S	4	8		15		17		32		5	24	3.4×6.5×3.3	12	12	-5	176	225	34			
LMF 8	4	8		15		24		32		5	24	3.4×6.5×3.3	12	12	-5	265	402	40			
LMF 10	4	10		19		29		39		6	29	4.5×8×4.4	12	12	-5	373	549	78			
LMF 12	4	12	21	30	42	6	32	4.5×8×4.4	12	12	-5	412	598	76							
LMF 13	4	13	23	32	43	6	33	4.5×8×4.4	12	12	-7	510	775	94							
LMF 16	5	16	28	37	48	6	38	4.5×8×4.4	12	12	-7	775	1180	134							
LMF 20	5	20	32	42	54	8	43	5.5×9.2×5.4	15	15	-9	863	1370	180							
LMF 25	6	25	40	59	62	8	51	5.5×9.2×5.4	15	15	-9	980	1570	340							
LMF 30	6	30	45	64	74	10	60	6.6×11×6.5	15	15	-9	1570	2750	460							
LMF 35	6	35	52	70	82	10	67	6.6×11×6.5	20	20	-13	1670	3140	795							
LMF 40	6	40	60	80	96	13	78	9×14×8.6	20	20	-13	2160	4020	1054							
LMF 50	6	50	80	100	116	13	98	9×14×8.6	20	20	-13	3820	7940	2200							
LMF 60	6	60	90	110	134	18	112	11×17.5×10.8	25	25	-13	4710	10000	2960							

Note) Since this model contains a synthetic resin retainer, do not use it at temperature exceeding 80°C.
If requiring a type equipped with a seal, indicate it when placing an order.

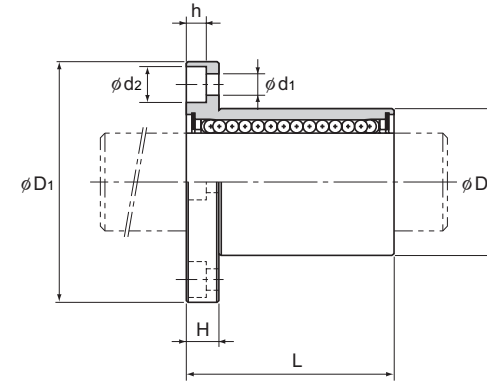
(Example) LMF25 UU

└── Seal attached on both ends of the nut

Model LMF-M (Stainless Steel Type)



Model LMF-M



Unit: mm

Model No.	Ball rows	Main dimensions										Flange perpendicularity	Eccentricity (max)	Radial clearance tolerance	Basic load rating		Mass g	
		Inscribed bore diameter		Outer diameter		Length		Flange diameter		H	PCD				Mounting hole	C		C ₀
		dr	Tolerance	D	Tolerance	L	Tolerance	D ₁	Tolerance									
LMF 6M	4	6	0 -0.009	12	0 -0.011	19	0 -0.2	28	0 -0.2	5	20	3.4×6.5×3.3	12	12	-5	206	265	26.5
LMF 8SM	4	8		15		17		32		5	24	3.4×6.5×3.3	12	12	-5	176	225	34
LMF 8M	4	8		15		24		32		5	24	3.4×6.5×3.3	12	12	-5	265	402	40
LMF 10M	4	10		19	29	39		6		29	4.5×8×4.4	12	12	-5	373	549	78	
LMF 12M	4	12	21	30	42	6	32	4.5×8×4.4	12	12	-5	412	598	76				
LMF 13M	4	13	23	32	43	6	33	4.5×8×4.4	12	12	-7	510	775	94				
LMF 16M	5	16	28	37	48	6	38	4.5×8×4.4	12	12	-7	775	1180	134				
LMF 20M	5	20	32	42	54	8	43	5.5×9.2×5.4	15	15	-9	863	1370	180				
LMF 25M	6	25	40	59	62	8	51	5.5×9.2×5.4	15	15	-9	980	1570	340				
LMF 30M	6	30	45	64	74	10	60	6.6×11×6.5	15	15	-9	1570	2750	460				

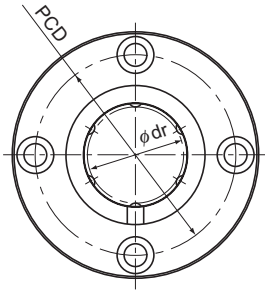
Note) Since this model contains a synthetic resin retainer, do not use it at temperature exceeding 80°C.
If requiring a type equipped with a seal, indicate it when placing an order.

Note) Since the nut and the balls use stainless steel, these models are highly resistant to corrosion and environment.

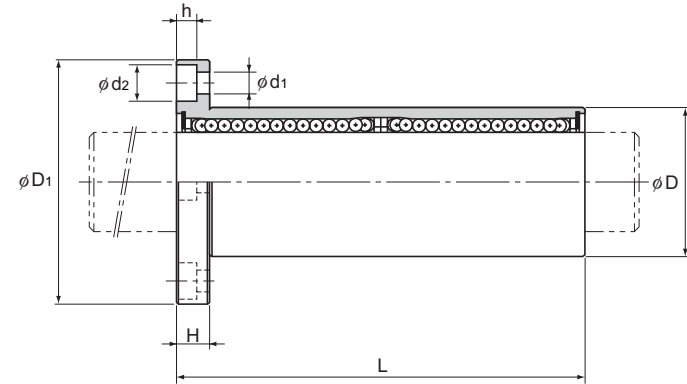
(Example) LMF20M UU

_____ Seal attached on both ends of the nut

Model LMF-L



Model LMF-L



Unit: mm

Model No.	Ball rows	Main dimensions											Flange perpendicularity μm	Eccentricity (max) μm	Radial clearance tolerance μm	Basic load rating		Mass g
		Inscribed bore diameter		Outer diameter		Length		Flange diameter		H	PCD	Mounting hole d ₁ × d ₂ × h				C	C ₀	
		dr	Tolerance	D	Tolerance	L	Tolerance	D ₁	Tolerance									
LMF 6L	4	6	0 -0.010	12	0	35	0 -0.3	28	0 -0.2	5	20	3.4 × 6.5 × 3.3	15	15	-5	324	529	32
LMF 8L	4	8		15	-0.013	45		32		5	24	3.4 × 6.5 × 3.3	15	15	-5	431	784	53
LMF 10L	4	10		19	0	55		39		6	29	4.5 × 8 × 4.4	15	15	-5	588	1100	105
LMF 12L	4	12		21	0	57		42		6	32	4.5 × 8 × 4.4	15	15	-5	657	1200	100
LMF 13L	4	13		23	-0.016	61		43		6	33	4.5 × 8 × 4.4	15	15	-7	814	1570	130
LMF 16L	5	16		28	0	70		48		6	38	4.5 × 8 × 4.4	15	15	-7	1230	2350	187
LMF 20L	5	20	32	0	80	54	0 -0.4	62	0 -0.3	8	43	5.5 × 9.2 × 5.4	20	20	-9	1400	2750	260
LMF 25L	6	25	40	-0.012	112	62		8		51	5.5 × 9.2 × 5.4	20	20	-9	1560	3140	515	
LMF 30L	6	30	45	0	123	74		10		60	6.6 × 11 × 6.5	20	20	-9	2490	5490	655	
LMF 35L	6	35	52	0	135	82		10		67	6.6 × 11 × 6.5	25	25	-13	2650	6270	970	
LMF 40L	6	40	60	-0.015	154	96		13		78	9 × 14 × 8.6	25	25	-13	3430	8040	1560	
LMF 50L	6	50	80	0	192	116		13		98	9 × 14 × 8.6	25	25	-13	6080	15900	3500	
LMF 60L	6	60	90	0	211	134	18	112	11 × 17.5 × 10.8	25	25	-13	7650	20000	4500			

Note) Since this model contains a synthetic resin retainer, do not use it at temperature exceeding 80°C.
If requiring a type equipped with a seal, indicate it when placing an order.

(Example) LMF35L UU

Seal attached on both ends of the nut