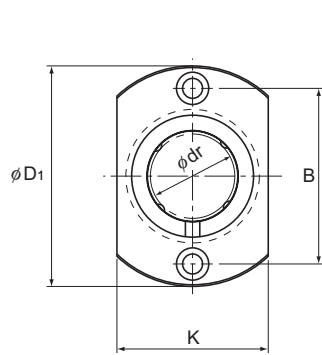
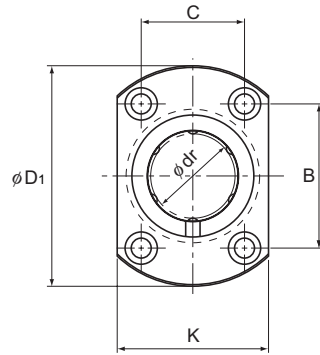


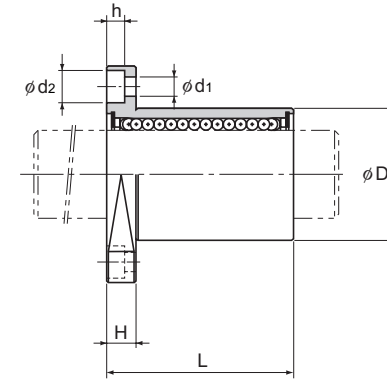
Model LMH



Models LMH6 to 13



Models LMH16 to 30



Unit: mm

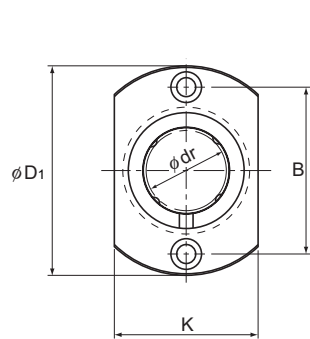
Model No.	Ball rows	Main dimensions														Flange perpendicularity μm	Eccentricity (max) μm	Radial clearance tolerance μm	Basic load rating		Mass g
		Inscribed bore diameter		Outer diameter		Length		Flange diameter		K	H	B	C	Mounting hole $d_1 \times d_2 \times h$	C N				C ₀ N		
		dr	Tolerance	D	Tolerance	L	Tolerance	D ₁	Tolerance												
LMH 6	4	6	0 -0.009	12	0	19	0 -0.2	28	0 -0.2	18	5	20	—	3.4×6.5×3.3	12	12	-5	206	265	18	
LMH 8	4	8		15	-0.011	24		32		21	5	24	—	3.4×6.5×3.3	12	12	-5	265	402	28	
LMH 10	4	10		19	0	29		39		25	6	29	—	4.5×8×4.4	12	12	-5	373	549	50	
LMH 12	4	12		21	0	30		42		27	6	32	—	4.5×8×4.4	12	12	-5	412	598	55	
LMH 13	4	13		23	-0.013	32		43		29	6	33	—	4.5×8×4.4	12	12	-7	510	775	70	
LMH 16	5	16	28	0 -0.010	37	48	34	6	31	22	4.5×8×4.4	12	12	-7	775	1180	95				
LMH 20	5	20	32		0	42	54	38	8	36	24	5.5×9.2×5.4	15	15	-9	863	1370	150			
LMH 25	6	25	40		0	59	62	46	8	40	32	5.5×9.2×5.4	15	15	-9	980	1570	275			
LMH 30	6	30	45		-0.016	64	74	51	10	49	35	6.6×11×6.5	15	15	-9	1570	2750	350			

Note) Since this model contains a synthetic resin retainer, do not use it at temperature exceeding 80°C.
If requiring a type equipped with a seal, indicate it when placing an order.

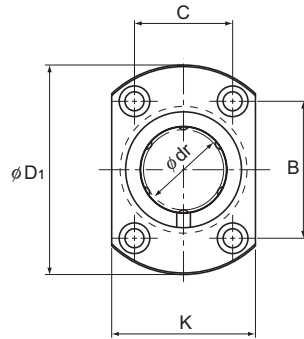
(Example) LMH16 UU

└── Seal attached on both ends of the nut

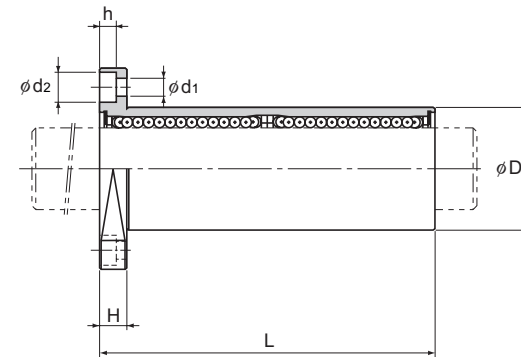
Model LMH-L



Models LMH6L to 13L



Models LMH16L to 30L



Unit: mm

Model No.	Ball rows	Main dimensions														Flange perpendicularity μm	Eccentricity (max) μm	Radial clearance tolerance μm	Basic load rating		
		Inscribed bore diameter		Outer diameter		Length		Flange diameter		K	H	B	C	Mounting hole $d_1 \times d_2 \times h$	C				C ₀	Mass	
		dr	Tolerance	D	Tolerance	L	Tolerance	D ₁	Tolerance												g
LMH 6L	4	6	0 -0.010	12	0	35	0 -0.3	28	0 -0.2	18	5	20	—	3.4×6.5×3.3	15	15	-5	324	529	28	
LMH 8L	4	8		15	-0.013	45		32		21	5	24	—	3.4×6.5×3.3	15	15	-5	431	784	40	
LMH 10L	4	10		19	0	55		39		25	6	29	—	4.5×8×4.4	15	15	-5	588	1100	75	
LMH 12L	4	12		21	0	57		42		27	6	32	—	4.5×8×4.4	15	15	-5	657	1200	82	
LMH 13L	4	13		23	-0.016	61		43		29	6	33	—	4.5×8×4.4	15	15	-7	814	1570	107	
LMH 16L	5	16	28	0 -0.012	70	48	34	6	31	22	4.5×8×4.4	15	15	-7	1230	2350	143				
LMH 20L	5	20	32		0	80	54	38	8	36	24	5.5×9.2×5.4	20	20	-9	1400	2750	225			
LMH 25L	6	25	40		0	112	62	46	8	40	32	5.5×9.2×5.4	20	20	-9	1560	3140	450			
LMH 30L	6	30	45		-0.019	123	-0.4	74	51	10	49	35	6.6×11×6.5	20	20	-9	2490	5490	575		

Note) Since this model contains a synthetic resin retainer, do not use it at temperature exceeding 80°C.
If requiring a type equipped with a seal, indicate it when placing an order.

(Example) LMH20L UU

Seal attached on both ends of the nut