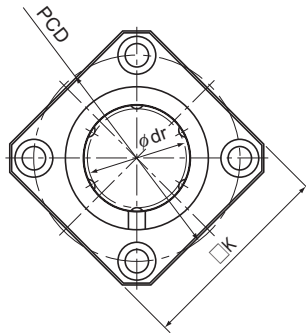
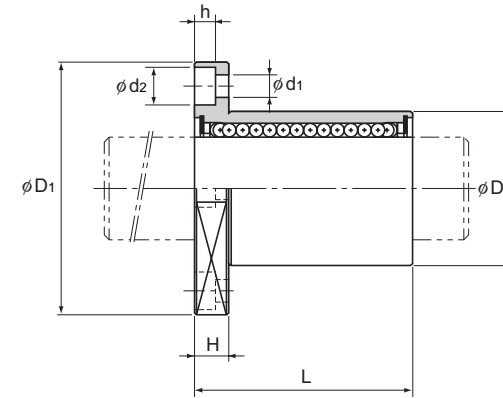


Model LMK



Model LMK



Unit: mm

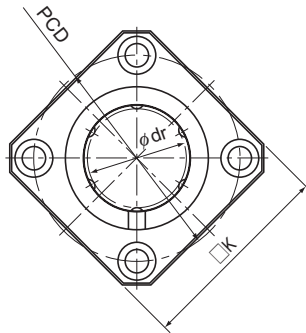
Model No.	Ball rows	Main dimensions												Flange perpendicularity	Eccentricity (max)	Radial clearance tolerance	Basic load rating		Mass g
		Inscribed bore diameter		Outer diameter		Length		Flange diameter		K	H	PCD	Mounting hole				C N	C ₀ N	
		dr	Tolerance	D	Tolerance	L	Tolerance	D ₁	Tolerance										
LMK 6	4	6	0 -0.009	12	0 -0.011	19	0 -0.2	28	0 -0.2	22	5	20	3.4×6.5×3.3	12	12	-5	206	265	18.5
LMK 8S	4	8		15		17		25		5	24	3.4×6.5×3.3	12	12	-5	176	225	23	
LMK 8	4	8		15		24		25		5	24	3.4×6.5×3.3	12	12	-5	265	402	29	
LMK 10	4	10		19		29		30		6	29	4.5×8×4.4	12	12	-5	373	549	61	
LMK 12	4	12	21	30	32	6	32	4.5×8×4.4	12	12	-5	412	598	56					
LMK 13	4	13	23	32	34	6	33	4.5×8×4.4	12	12	-7	510	775	75					
LMK 16	5	16	28	37	37	6	38	4.5×8×4.4	12	12	-7	775	1180	104					
LMK 20	5	20	32	42	42	8	43	5.5×9.2×5.4	15	15	-9	863	1370	145					
LMK 25	6	25	40	59	59	8	51	5.5×9.2×5.4	15	15	-9	980	1570	300					
LMK 30	6	30	45	64	64	10	60	6.6×11×6.5	15	15	-9	1570	2750	375					
LMK 35	6	35	52	70	70	10	67	6.6×11×6.5	20	20	-13	1670	3140	692					
LMK 40	6	40	60	80	80	13	78	9×14×8.6	20	20	-13	2160	4020	864					
LMK 50	6	50	80	100	100	13	98	9×14×8.6	20	20	-13	3820	7940	2020					
LMK 60	6	60	90	110	110	18	112	11×17.5×10.8	25	25	-13	4710	10000	2520					

Note) Since this model contains a synthetic resin retainer, do not use it at temperature exceeding 80°C.
If requiring a type equipped with a seal, indicate it when placing an order.

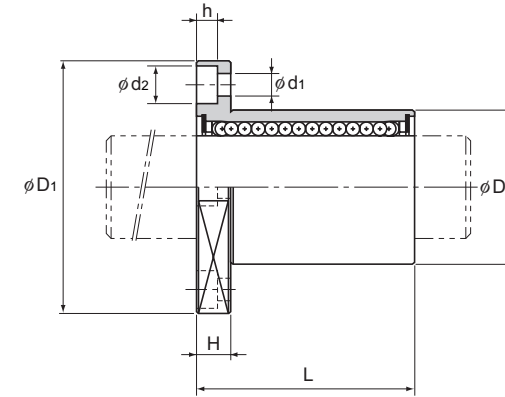
(Example) LMK13 UU

└─── Seal attached on both ends of the nut

Model LMK-M (Stainless Steel Type)



Model LMK-M



Unit: mm

Model No.	Ball rows	Main dimensions											Flange perpendicularity	Eccentricity (max)	Radial clearance tolerance	Basic load rating		Mass	
		Inscribed bore diameter		Outer diameter		Length		Flange diameter		Mounting hole						C	C ₀		
		dr	Tolerance	D	Tolerance	L	Tolerance	D ₁	Tolerance	K	H	PCD							d ₁ × d ₂ × h
LMK 6M	4	6	0 -0.009	12	0 -0.011	19	0 -0.2	28	0 -0.2	22	5	20	3.4 × 6.5 × 3.3	12	12	-5	206	265	18.5
LMK 8SM	4	8		15		17		32		25	5	24	3.4 × 6.5 × 3.3	12	12	-5	176	225	23
LMK 8M	4	8		15		24		32		25	5	24	3.4 × 6.5 × 3.3	12	12	-5	265	402	29
LMK 10M	4	10		19		29		39		30	6	29	4.5 × 8 × 4.4	12	12	-5	373	549	61
LMK 12M	4	12	21	30	42	32	6	32	4.5 × 8 × 4.4	12	12	-5	412	598	56				
LMK 13M	4	13	23	32	43	34	6	33	4.5 × 8 × 4.4	12	12	-7	510	775	75				
LMK 16M	5	16	28	37	48	37	6	38	4.5 × 8 × 4.4	12	12	-7	775	1180	104				
LMK 20M	5	20	32	42	54	42	8	43	5.5 × 9.2 × 5.4	15	15	-9	863	1370	145				
LMK 25M	6	25	40	59	62	50	8	51	5.5 × 9.2 × 5.4	15	15	-9	980	1570	300				
LMK 30M	6	30	45	64	74	58	10	60	6.6 × 11 × 6.5	15	15	-9	1570	2750	375				

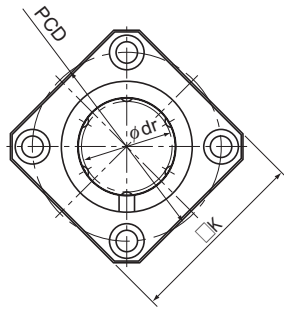
Note) Since this model contains a synthetic resin retainer, do not use it at temperature exceeding 80°C.
If requiring a type equipped with a seal, indicate it when placing an order.

Note) Since the nut and the balls use stainless steel, these models are highly resistant to corrosion and environment.

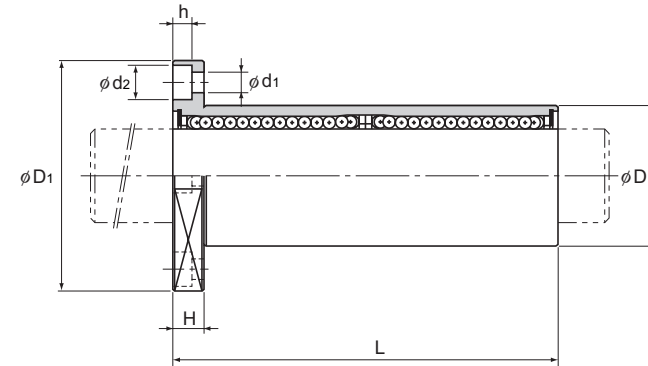
(Example) LMK25M UU

└── Seal attached on both ends of the nut

Model LMK-L



Model LMK-L



Unit: mm

Model No.	Ball rows	Main dimensions												Flange perpendicularity μm	Eccentricity (max) μm	Radial clearance tolerance μm	Basic load rating		Mass g
		Inscribed bore diameter		Outer diameter		Length		Flange diameter		K	H	PCD	Mounting hole d ₁ × d ₂ × h				C N	C ₀ N	
		dr	Tolerance	D	Tolerance	L	Tolerance	D ₁	Tolerance										
LMK 6L	4	6	0 -0.010	12	0	35	0 -0.3	28	0 -0.2	22	5	20	3.4 × 6.5 × 3.3	15	15	-5	324	529	26
LMK 8L	4	8		15	-0.013	45		32		25	5	24	3.4 × 6.5 × 3.3	15	15	-5	431	784	46
LMK 10L	4	10		19	0	55		39		30	6	29	4.5 × 8 × 4.4	15	15	-5	588	1100	88
LMK 12L	4	12		21	0	57		42		32	6	32	4.5 × 8 × 4.4	15	15	-5	657	1200	82
LMK 13L	4	13		23	-0.016	61		43		34	6	33	4.5 × 8 × 4.4	15	15	-7	814	1570	108
LMK 16L	5	16	28	0	70	48	37	6	38	4.5 × 8 × 4.4	15	15	-7	1230	2350	160			
LMK 20L	5	20	32	0	80	54	42	8	43	5.5 × 9.2 × 5.4	20	20	-9	1400	2750	230			
LMK 25L	6	25	40	-0.012	112	62	50	8	51	5.5 × 9.2 × 5.4	20	20	-9	1560	3140	475			
LMK 30L	6	30	45	0	123	74	58	10	60	6.6 × 11 × 6.5	20	20	-9	2490	5490	575			
LMK 35L	6	35	52	0	135	82	64	10	67	6.6 × 11 × 6.5	25	25	-13	2650	6270	870			
LMK 40L	6	40	60	-0.015	154	96	75	13	78	9 × 14 × 8.6	25	25	-13	3430	8040	1380			
LMK 50L	6	50	80	0	192	116	92	13	98	9 × 14 × 8.6	25	25	-13	6080	15900	3300			
LMK 60L	6	60	90	0	211	134	106	18	112	11 × 17.5 × 10.8	25	25	-13	7650	20000	4060			

Note) Since this model contains a synthetic resin retainer, do not use it at temperature exceeding 80°C.
If requiring a type equipped with a seal, indicate it when placing an order.

(Example) LMK50L UU

└─── Seal attached on both ends of the nut