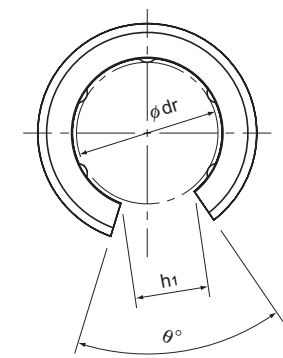
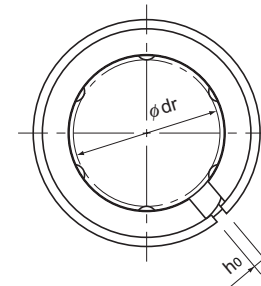
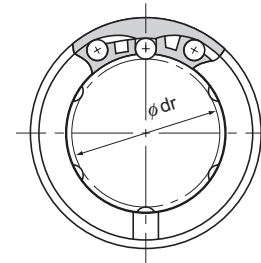
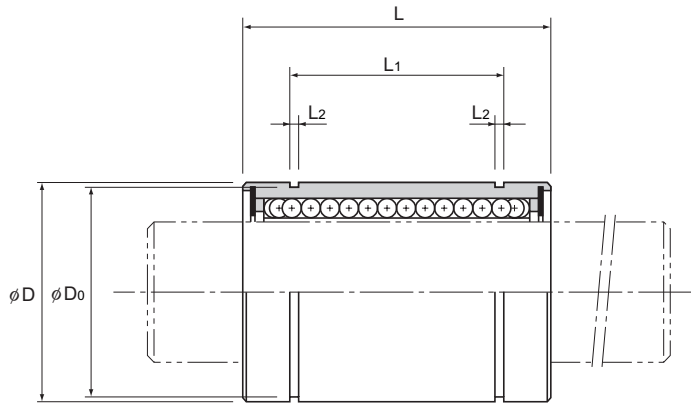


Model LM



Model LM

Model LM-AJ

Model LM-OP

Unit: mm

Model No.			Ball rows	Main dimensions										Eccentricity (max) μm		Radial clearance tolerance μm	Basic load rating					
Standard type	Clearance-adjustable type	Open type		Inscribed bore diameter		Outer diameter		Length		L ₁	Tolerance	L ₂	D ₀	h ₀	h ₁		θ°	Precision	Upper	C	C ₀	Mass
				dr	Tolerance	D	Tolerance	L	Tolerance													
LM 3	—	—	4	3	0	0	7	0	10	0	—	—	—	—	—	4	8	-2	88.2	108	1.4	
LM 4	—	—	4	4	-0.005	-0.008	8	0	12	0	—	—	—	—	—	4	8	-3	88.2	127	1.9	
LM 5	—	—	4	5	-0.005	-0.008	10	-0.009	15	-0.12	—	—	—	—	—	4	8	-3	167	206	4	
LM 6	LM 6-AJ	—	4	6	-0.006	-0.009	12	0	19	-0.2	10.2	0	1.1	9.6	—	4	8	-3	167	206	4	
LM 8S	LM 8S-AJ	—	4	8	-0.006	-0.009	15	-0.011	17	-0.2	13.5	0	1.1	11.5	1	8	12	-5	206	265	8	
LM 8	LM 8-AJ	—	4	8	-0.006	-0.009	15	-0.011	24	-0.2	11.5	0	1.1	14.3	1	8	12	-5	176	225	11	
LM 10	LM 10-AJ	—	4	10	-0.006	-0.009	19	0	29	-0.2	17.5	0	1.1	14.3	1	8	12	-5	265	402	16	
LM 12	LM 12-AJ	LM 12-OP	4	12	-0.006	-0.009	21	0	30	-0.2	22	0	1.3	18	1	8	12	-5	373	549	30	
LM 13	LM 13-AJ	LM 13-OP	4	13	-0.006	-0.009	23	-0.013	32	-0.2	23	0	1.3	20	1.5	8	80	-5	412	598	31.5	
LM 16	LM 16-AJ	LM 16-OP	5	16	-0.006	-0.009	28	0	37	-0.2	26.5	0	1.6	27	1.5	11	60	-7	775	1180	69	
LM 20	LM 20-AJ	LM 20-OP	5	20	-0.007	-0.010	32	0	42	-0.2	30.5	0	1.6	30.5	1.5	11	60	-9	863	1370	87	
LM 25	LM 25-AJ	LM 25-OP	6	25	-0.007	-0.010	40	0	59	-0.3	41	0	1.85	38	2	12	50	-9	980	1570	220	
LM 30	LM 30-AJ	LM 30-OP	6	30	-0.007	-0.010	45	-0.016	64	-0.3	44.5	0	1.85	43	2.5	15	50	-9	1570	2750	250	
LM 35	LM 35-AJ	LM 35-OP	6	35	-0.008	-0.012	52	0	70	-0.3	49.5	0	2.1	49	2.5	17	50	-13	1670	3140	390	
LM 40	LM 40-AJ	LM 40-OP	6	40	-0.008	-0.012	60	-0.019	80	-0.3	60.5	0	2.1	57	3	20	50	-13	2160	4020	585	
LM 50	LM 50-AJ	LM 50-OP	6	50	-0.008	-0.012	80	0	100	-0.3	74	0	2.6	76.5	3	25	50	-13	3820	7940	1580	
LM 60	LM 60-AJ	LM 60-OP	6	60	-0.009	-0.015	90	-0.022	110	-0.3	85	0	3.15	86.5	3	30	50	-16	4710	10000	2000	

Note) Since this model contains a synthetic resin retainer, do not use it at temperature exceeding 80°C.
 If the ambient temperature exceeds 80°C, use the type equipped with a metal retainer (model LM-GA).
 If requiring a type equipped with a seal, indicate it when placing an order.

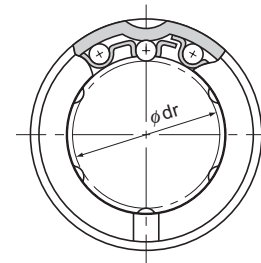
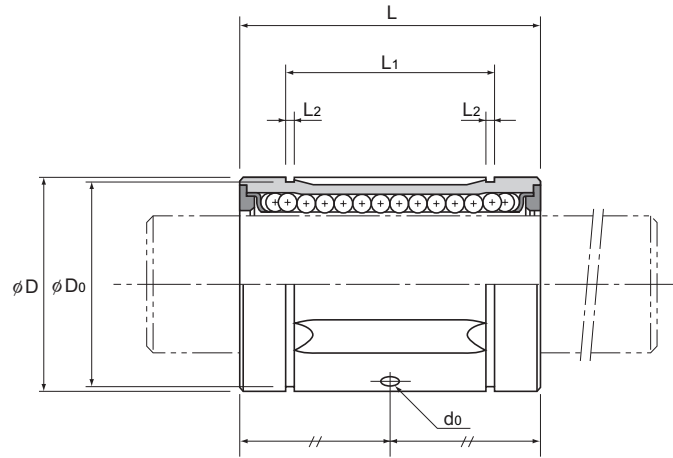
Note) When using the Linear Bushing on a single shaft, use two or more units (instead of one unit) on the same shaft to avoid a moment load, and secure a large distance between the units.

(Example) LM13 UU

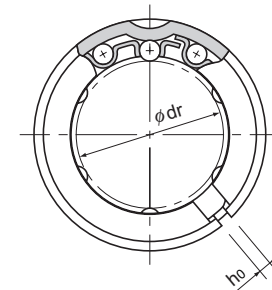
Seal attached on both ends of the nut

The accuracy of clearance-adjustable types (-AJ) and open types (-OP) in inscribed bore diameter and outer diameter indicates the value before division.

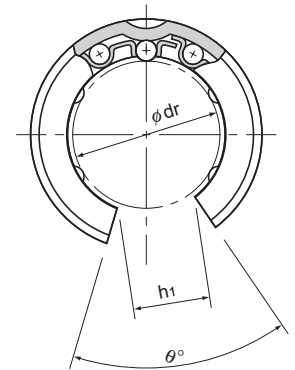
Model LM-GA (Metal Retainer Type)



Model LM-GA



Model LM-GA-AJ



Model LM-GA-OP

Unit: mm

Model No.			Ball rows	Main dimensions																Greasing hole d_0	Eccentricity (max) μm		Radial clearance tolerance μm	Basic load rating		
Standard type	Clearance- adjustable type	Open type		Inscribed bore diameter		Outer diameter		Length		L_1	Tolerance	L_2	D_0	h_0	h_1	θ°	Precision	Upper	C		C_0	Mass g				
				dr	Tolerance		D	Precision/ high	L															Tolerance		
					Precision	Upper																				
LM 6GA	—	—	3	6	0	0	12	0	19	-0.2	13.5	0	1.1	11.5	—	—	—	—	8	12	-5	206	265	8		
LM 8SGA	—	—	3	8			15		0		17		11.5	1.1	14.3	—	—	—	—	—	8	12	-5	176	225	11
LM 8GA	—	—	3	8			15		-0.011		24		17.5	1.1	14.3	—	—	—	—	—	8	12	-5	265	402	16
LM 10GA	—	—	3	10	-0.006	-0.009	19	0	29	-0.2	22	0	1.3	18	—	—	—	2	8	12	-5	373	549	30		
LM 12GA	LM 12GA-AJ	LM 12GA-OP	4	12			21		0		30		23	1.3	20	1.5	7.5	80	2	8	12	-5	412	598	31.5	
LM 13GA	LM 13GA-AJ	LM 13GA-OP	4	13			23		-0.013		32		23	1.3	22	1.5	9	80	2	8	12	-7	510	775	43	
LM 16GA	LM 16GA-AJ	LM 16GA-OP	4	16	0	0	28	0	37	-0.2	26.5	0	1.6	27	1.5	11	60	2.3	8	12	-7	775	1180	69		
LM 20GA	LM 20GA-AJ	LM 20GA-OP	5	20			32		0		42		30.5	1.6	30.5	2	11	60	2.3	10	15	-9	863	1370	87	
LM 25GA	LM 25GA-AJ	LM 25GA-OP	5	25			40		0		59		41	1.85	38	2	13	60	3	10	15	-9	980	1570	220	
LM 30GA	LM 30GA-AJ	LM 30GA-OP	6	30	-0.007	-0.010	45	-0.016	64	-0.2	44.5	0	1.85	43	2.5	15	50	3	10	15	-9	1570	2750	250		
LM 35GA	LM 35GA-AJ	LM 35GA-OP	6	35			52		0		70		49.5	2.1	49	2.5	17	50	3	12	20	-13	1670	3140	390	
LM 38GA	LM 38GA-AJ	LM 38GA-OP	6	38			57		0		76		58.5	2.1	54.5	3	18	50	3	12	20	-13	2160	4020	565	
LM 40GA	LM 40GA-AJ	LM 40GA-OP	6	40	-0.008	-0.012	60	-0.019	80	-0.3	60.5	-0.3	2.1	57	3	20	50	3	12	20	-13	2160	4020	585		
LM 50GA	LM 50GA-AJ	LM 50GA-OP	6	50			80		0		100		74	2.6	76.5	3	25	50	3	12	20	-13	3820	7940	1580	
LM 60GA	LM 60GA-AJ	LM 60GA-OP	6	60			90		0		110		85	3.15	86.5	3	30	50	4	17	25	-16	4710	10000	2000	
LM 80GA	LM 80GA-AJ	LM 80GA-OP	6	80	-0.009	-0.015	120	-0.022	140	0	105.5	0	4.15	116	3	40	50	4	17	25	-16	7350	16000	4520		
LM 100GA	LM 100GA-AJ	LM 100GA-OP	6	100	0	0	150	0	175	0	125.5	0	4.15	145	3	50	50	4	20	30	-20	14100	34800	8600		
LM 120A	LM 120A-AJ	LM 120A-OP	8	120	-0.010	-0.020	180	-0.025	200	-0.4	158.6	-0.4	4.15	175	4	85	80	5	20	30	-25	16400	40000	15000		

Note) If requiring a type equipped with a seal, indicate it when placing an order. (seal heat resistance: 80°C.)

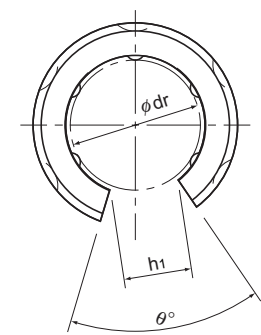
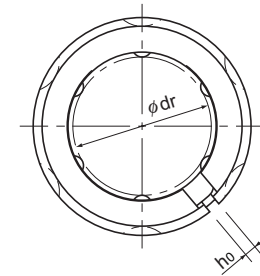
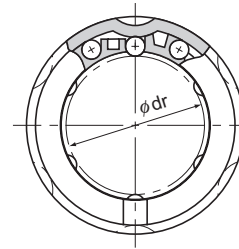
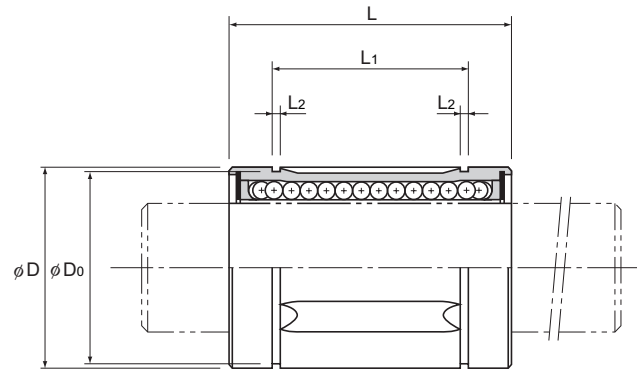
(Example) LM50GA UU

Seal attached on both ends of the nut

The accuracy of clearance-adjustable types (-AJ) and open types (-OP) in inscribed bore diameter and outer diameter indicates the value before division.

Note) When using the Linear Bushing on a single shaft, use two or more units (instead of one unit) on the same shaft to avoid a moment load, and secure a large distance between the units.

Model LM-MG (Stainless Steel Type)



Model LM-MG

Model LM-MG-AJ

Model LM-MG-OP

Unit: mm

Model No.			Ball rows	Main dimensions																Eccentricity (max) μm		Radial clearance tolerance μm	Basic load rating		
Standard type	Clearance-adjustable type	Open type		Inscribed bore diameter		Outer diameter		Length		L ₁	Tolerance	L ₂	D ₀	h ₀	h ₁	θ°	Precision	Upper	C	C ₀	Mass				
				dr	Tolerance	D	Tolerance	L	Tolerance													Precision	Upper		
LM 3M	—	—	4	3	7	0	10	0	—	—	—	—	—	—	—	4	8	-2	88.2	108	1.4				
LM 4M	—	—	4	4	8	-0.005	12	-0.12	—	—	—	—	—	—	4	8	-3	88.2	127	1.9					
LM 5M	—	—	4	5	10	—	15	—	—	—	—	—	—	—	4	8	-3	167	206	4					
* LM 6MG	LM 6MG-AJ	—	4	6	12	0	19	—	10.2	—	1.1	9.6	1	—	—	4	8	-5	206	265	8				
* LM 8SMG	LM 8SMG-AJ	—	4	8	15	0	17	—	11.5	—	1.1	14.3	1	—	—	8	12	-5	176	225	11				
* LM 8MG	* LM 8MG-AJ	—	4	8	15	-0.011	24	—	17.5	—	1.1	14.3	1	—	—	8	12	-5	265	402	16				
* LM 10MG	* LM 10MG-AJ	—	4	10	19	0	29	0	22	—	1.3	18	1	—	—	8	12	-5	373	549	30				
* LM 12MG	* LM 12MG-AJ	—	4	12	21	0	30	-0.2	23	—	1.3	20	1.5	—	—	8	12	-5	412	598	31.5				
* LM 13MG	* LM 13MG-AJ	* LM 13MG-OP	4	13	23	-0.013	32	—	23	—	1.3	22	1.5	9	80	8	12	-7	510	775	43				
* LM 16MG	* LM 16MG-AJ	* LM 16MG-OP	4	16	28	—	37	—	26.5	—	1.6	27	1.5	11	80	8	12	-7	775	1180	69				
* LM 20MG	* LM 20MG-AJ	* LM 20MG-OP	5	20	32	0	42	—	30.5	—	1.6	30.5	1.5	11	60	10	15	-9	863	1370	87				
* LM 25MG	* LM 25MG-AJ	* LM 25MG-OP	5	25	40	-0.016	59	—	41	—	1.85	38	2	12	50	10	15	-9	980	1570	220				
* LM 30MG	* LM 30MG-AJ	* LM 30MG-OP	6	30	45	-0.010	64	0	44.5	—	1.85	43	2.5	15	50	10	15	-9	1570	2750	250				
* LM 35MG	* LM 35MG-AJ	* LM 35MG-OP	6	35	52	0	70	-0.3	49.5	—	2.1	49	2.5	17	50	12	20	-13	1670	3140	390				
* LM 40MG	* LM 40MG-AJ	* LM 40MG-OP	6	40	60	-0.019	80	—	60.5	—	2.1	57	3	20	50	12	20	-13	2160	4020	585				

Note) Since this model contains a synthetic resin retainer, do not use it at temperature exceeding 80°C.
 If the ambient temperature exceeds 80°C, use the type equipped with a metal retainer and indicate "A" at the end of the model number.
 (For those marked with * in the table, metal retainers are available.)
 (Metal retainer types of models LM6MG, 8SMG and 8MG each have 3 rows of balls.)

(Example) LM30MG A
 High temperature symbol

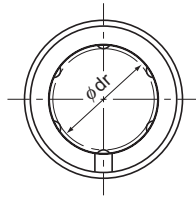
If requiring a type equipped with a seal, indicate it when placing an order. (seal heat resistance: 80°C.)
 For an open type, only type A is available.

(Example) LM30MG UU
 Seal attached on both ends of the nut

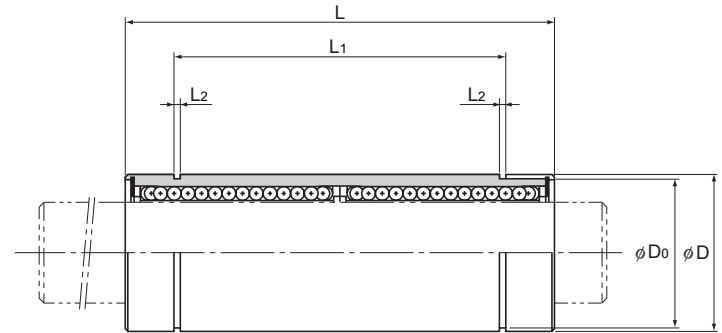
The accuracy of clearance-adjustable types (-AJ) and open types (-OP) in inscribed bore diameter and outer diameter indicates the value before division.

Note) Since the nut and the balls use stainless steel, these models are highly resistant to corrosion and environment.
 Stainless-steel type does not have an oil hole (OA type specification is required).
 When using the Linear Bushing on a single shaft, use two or more units (instead of one unit) on the same shaft to avoid a moment load, and secure a large distance between the units.

Model LM-L



Model LM-L



Unit: mm

Model No.	Ball rows	Main dimensions						Eccentricity (max) μm	Radial clearance tolerance μm	Basic load rating		Mass g				
		Inscribed bore diameter		Outer diameter		Length				L ₁	Tolerance		L ₂	D ₀	C N	C ₀ N
		dr	Tolerance	D	Tolerance	L	Tolerance									
LM 3L	4	3	0 -0.010	7	0 -0.013	19	0 -0.3	—	—	—	—	10	-2	139	216	3
LM 4L	4	4		8		23		—		—	10	-3	139	254	4	
LM 5L	4	5		10		29		20		1.1	9.6	10	-3	263	412	8
LM 6L	4	6		12		35		27		1.1	11.5	15	-5	324	529	16
LM 8L	4	8		15		45		35		1.1	14.3	15	-5	431	784	31
LM 10L	4	10		19	55	44		1.3	18	15	-5	588	1100	62		
LM 12L	4	12		21	57	46		1.3	20	15	-5	657	1200	80		
LM 13L	4	13		23	61	46		1.3	22	15	-7	814	1570	90		
LM 16L	5	16		28	70	53		1.6	27	15	-7	1230	2350	145		
LM 20L	5	20		32	80	61		1.6	30.5	20	-9	1400	2750	180		
LM 25L	6	25	40	112	82	1.85	38	20	-9	1560	3140	440				
LM 30L	6	30	45	123	89	1.85	43	20	-9	2490	5490	580				
LM 35L	6	35	52	135	99	2.1	49	25	-13	2650	6270	795				
LM 40L	6	40	60	154	121	2.1	57	25	-13	3430	8040	1170				
LM 50L	6	50	80	192	148	2.6	76.5	25	-13	6080	15900	3100				
LM 60L	6	60	90	211	170	3.15	86.5	25	-16	7650	20000	3500				

Note) Since this model contains a synthetic resin retainer, do not use it at temperature exceeding 80°C.
If requiring a type equipped with a seal, indicate it when placing an order.

Note) A stainless steel type is also available. Contact THK for details.

(Example) LM13L UU

————— Seal attached on both ends of the nut