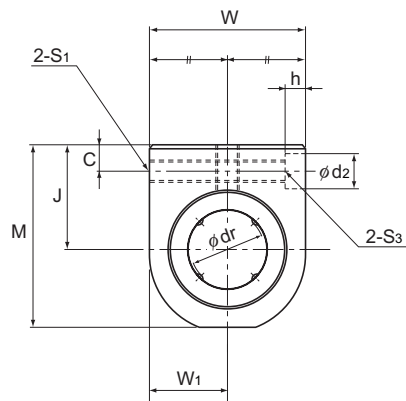
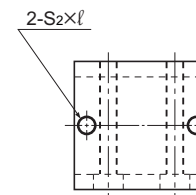
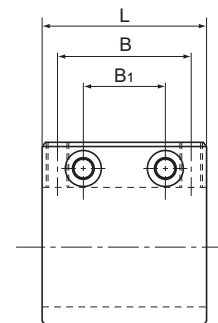


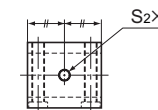
# Model SH



Model SH



Top surface of models SH6 to SH20



Top surface of models SH3 to SH5

Unit: mm

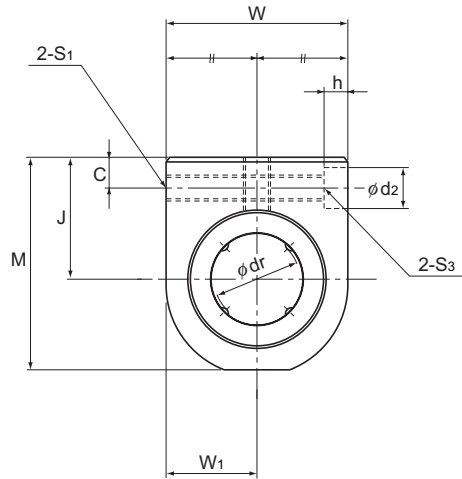
Model No.	Outer dimensions			LM casing dimensions												Model No. of Linear Bushing to be combined	Basic load rating		Unit Mass g
	Height M	Width W	Length L	Mounting hole position			Tap		Through bolt model No, S <sub>3</sub>	Center height J ±0.02	W <sub>1</sub> ±0.02	d <sub>2</sub>	h	Inscribed bore diameter			C	C <sub>0</sub>	
				B	B <sub>1</sub>	C	S <sub>1</sub>	S <sub>2</sub> × l						dr	Tolerance				
SH 3UU	14	10	13	—	8	3	M3	M3 × 5.5	M2	9	5	4.2	1.5	3	0 -0.008	LM3UU	88.2	108	4.5
SH 4UU	16	12	15	—	10	3	M3	M3 × 6	M2	10	6	4.2	1.5	4		LM4UU	88.2	127	7
SH 5UU	18	14	17	—	12	3	M3	M3 × 6	M2	11	7	4.2	1.5	5		LM5UU	167	206	11
SH 6UU	22	16	24	18	9	5	M4	M4 × 8	M3	14	8	6.5	3.3	6	0 -0.009	LM6UU	206	265	21.6
SH 8UU	26	20	27	20	10	5	M4	M5 × 8.5	M3	16	10	6.5	3.3	8		LM8UU	265	402	32
SH 10UU	32	26	35	27	15	6	M5	M6 × 9.5	M4	19	13	8	4.4	10		LM10UU	373	549	65
SH 12UU	34	28	35	27	15	6	M5	M6 × 9.5	M4	20	14	8	4.4	12	0 -0.010	LM12UU	412	598	81
SH 13UU	36	30	36	28	16	6	M5	M6 × 9.5	M4	21	15	8	4.4	13		LM13UU	510	775	90
SH 16UU	42	36	40	32	18	6	M5	M6 × 10	M4	24	18	8	4.4	16		LM16UU	775	1180	150
SH 20UU	49	42	44	36	22	7	M6	M6 × 12	M5	28	21	9.5	5.4	20	LM20UU	863	1370	215	

Note) Since this model contains a synthetic resin retainer, do not use it at temperature exceeding 80°C.  
A stainless steel Linear Bushing model LM-MG, which is highly corrosion resistant, can also be incorporated at your request.

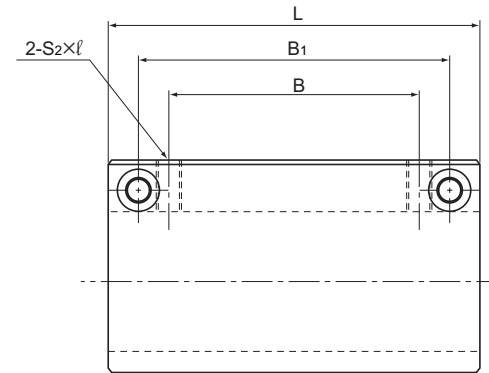
Example of Model Number for Use in Combination with Linear Bushing Units

Linear Bushing to be combined	Example of model No.	
Both end attached with seal	SH 13UU	Standard stock
Without seal	SH 13	Build to order
Made of stainless steel; both end attached with seal	SH 13MUU	Build to order

# Model SH-L



Model SH-L



Linear Bushing

Unit: mm

Model No.	Outer dimensions			LM casing dimensions											Model No. of Linear Bushing to be combined	Basic load rating		Unit Mass g	
	Height M	Width W	Length L	Mounting hole position			Tap		Through bolt model No., S <sub>3</sub>	Center height J ±0.02	W <sub>1</sub> ±0.02	d <sub>2</sub>	h	Inscribed bore diameter		C	C <sub>0</sub>		
				B	B <sub>1</sub>	C	S <sub>1</sub>	S <sub>2</sub> × l						dr					Tolerance
SH 3LUU	14	10	23	10	18	3	M3	M3 × 5.5	M2	9	5	4.2	1.5	3	0 -0.008	LM3U	139	216	8.5
SH 4LUU	16	12	27	14	22	3	M3	M3 × 6	M2	10	6	4.2	1.5	4		LM4U	139	254	13
SH 5LUU	18	14	32	18	26	3	M3	M3 × 6	M2	11	7	4.2	1.5	5		LM5U	263	412	22
SH 6LUU	22	16	40	20	30	5	M4	M4 × 8	M3	14	8	6.5	3.3	6	0 -0.009	LM6U	324	529	35
SH 8LUU	26	20	52	30	42	5	M4	M5 × 8.5	M3	16	10	6.5	3.3	8		LM8U	431	784	65
SH 10LUU	32	26	60	36	50	6	M5	M6 × 9.5	M4	19	13	8	4.4	10		LM10U	588	1100	125
SH 12LUU	34	28	62	36	50	6	M5	M6 × 9.5	M4	20	14	8	4.4	12		LM12U	657	1200	155
SH 13LUU	36	30	66	40	54	6	M5	M6 × 9.5	M4	21	15	8	4.4	13		LM13U	814	1570	190
SH 16LUU	42	36	76	52	66	6	M5	M6 × 10	M4	24	18	8	4.4	16		LM16U	1230	2350	295
SH 20LUU	49	42	86	58	72	7	M6	M6 × 12	M5	28	21	9.5	5.4	20	0 -0.010	LM20U	1400	2750	425

Note) Since this model contains a synthetic resin retainer, do not use it at temperature exceeding 80°C.  
A stainless steel Linear Bushing model LM-MG, which is highly corrosion resistant, can also be incorporated at your request.

Example of Model Number for Use in Combination with Linear Bushing Units

Linear Bushing to be combined	Example of model No.	
Both end attached with seal	SH 13LUU	Standard stock
Without seal	SH 13L	Build to order
Made of stainless steel; both end attached with seal	SH 13MLUU	Build to order