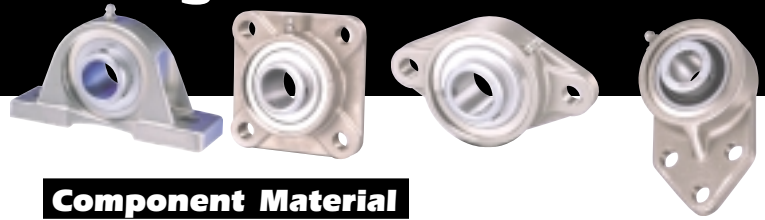




# Corrosion Resistant Engineered Solutions OVERVIEW

**CRES BEV  
GOLD-00**



**SEALMASTER**



# BEV GOLD

### Component Material

<b>Balls:</b>	400 Series Stainless Steel
<b>Retainer:</b>	Unique Land Riding Retainer
<b>Bearing Races:</b>	TDC Coated 52100 Steel
<b>Flinger:</b>	Corrosion Resistant
<b>Housing:</b>	316 Passivated Stainless Steel
<b>Grease Fitting:</b>	300 Series Stainless Steel
<b>Grease:</b>	H1 USDA/FDA Compliant Synthetic Food Grade

**BEV GOLD - Mounted Ball Bearing**

### Housing Features

- 316 Passivated Stainless Steel
- Advanced Casting Technology
- Solid Construction - Machined Base
- Specialized Unit Identification System

### Housing Benefits

- Highest Amount of Corrosion Resistance Currently Available for Stainless Steel Bearing Housings
- Twice the Tensile Strength of Gray Cast Iron
- Smooth Surface Finish with Fewer Places for Bacteria to Grow
- Minimized Gaps, No Fillings, Smooth Easy to Clean Surfaces
- Permanent Brand & Nomenclature Marking - Easy to Reorder

### Insert Features

- TDC Thin Dense Chrome Coated 52100 Steel Races
- 400 Series Stainless Steel Balls
- Wide Outer Race Design
- SEALMASTER Exclusive Pin & Dimple System
- Spring Loaded Ultraguard Seal
- Endurion Coated Diamond Faceted Set Screws
- H1 USDA/FDA Compliant Synthetic Food Grade Grease

### Insert Benefits

- Comparable Corrosion Resistance to 400 Series Stainless Steel without Compromising Fatigue Life
- Extra Corrosion Resistance
- Extra Grease Capacity - Extended Performance
- Direct Lubrication Path
- High Sealing Performance, Wear Compensating
- Corrosion Resistant - Reliable Performance
- Food Processing Approved Lubricant

### Consult Technical Customer Service for Additional Information on:

- Chemical Resistance
- Installation and Maintenance Instructions
- Load Ratings
- Interchange Information
- Dimensional Information
  - Grease Fittings
  - Set Screw Sizes
  - Misalignment Capabilities

#### Technical Assistance

Aurora, IL 60504  
1-630-898-9620  
1-630-898-6064 Fax

#### EPT Customer Service

1-800-626-2120  
1-800-626-3292 Fax

#### Customer Service

Canada  
Markham, ONT L3P 3J3  
1-800-268-4149  
1-800-668-9005 Fax

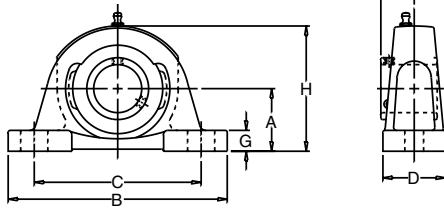
**WWW.EMERSON-EPT.COM**

### The CRES Family of Products



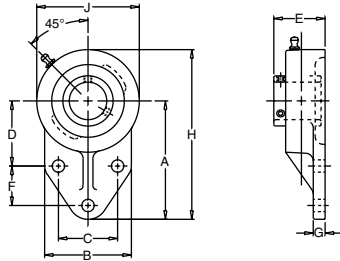
**A Better Design for Healthy Peace of Mind**

## Pillow Block



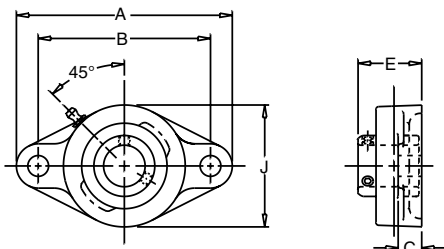
DESCRIPTION	SHAFT SIZE	A	B	C MAX	C MIN	D	G	H	K	BOLT SIZE
CRPS-12	3/4	1 5/16	5	4 1/16	3 7/16	1 1/2	1/2	2 9/16	1/2	3/8
CRPS-16	1	1 7/16	5 1/2	4 7/16	3 13/16	1 1/2	1/2	2 13/16	9/16	3/8
CRPS-19	1 3/16	1 11/16	6 1/2	5	4 1/2	1 7/8	9/16	3 3/8	5/8	1/2
CRPS-20R	1 1/4 R	1 11/16	6 1/2	5	4 1/2	1 7/8	9/16	3 3/8	5/8	1/2
CRPS-20	1 1/4	1 7/8	6 9/16	5 1/4	4 3/4	1 7/8	5/8	3 3/4	11/16	1/2
CRPS-23	1 7/16	1 7/8	6 9/16	5 1/4	4 3/4	1 7/8	5/8	3 3/4	11/16	1/2
CRPS-24	1 1/2	1 15/16	7 1/4	5 5/8	5 1/8	2 1/8	11/16	3 15/16	3/4	1/2
CRPS-27	1 11/16	2 1/8	7 1/2	6	5 1/2	2 1/8	11/16	4 1/4	3/4	1/2
CRPS-31	1 15/16	2 1/4	8 1/8	6 7/16	6 1/16	2 3/8	3/4	4 9/16	3/4	5/8
CRPS-35	2 3/16	2 1/2	8 5/8	6 15/16	6 9/16	2 3/8	3/4	5	7/8	5/8
CRPS-39	2 7/16	2 3/4	9 1/2	7 9/16	6 15/16	2 3/4	7/8	5 9/16	1	5/8

## Flange Bracket



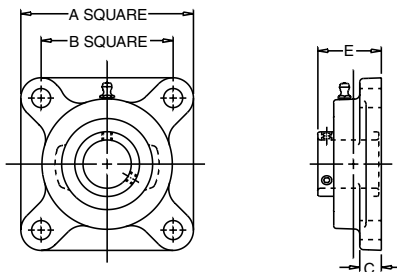
DESCRIPTION	SHAFT SIZE	A	B	C	D	E	F	G	H	J	BOLT SIZE
CRFBS-12	3/4	3	2 3/8	1 1/2	1 11/16	1 11/32	7/8	5/16	4 1/4	2 1/2	3/8
CRFBS-16	1	3 3/8	2 1/2	1 5/8	1 13/16	1 1/2	1 1/8	3/8	4 3/4	2 3/4	3/8
CRFBS-19	1 3/16	3 3/4	2 3/4	1 7/8	2 1/16	1 5/8	1 1/4	1 5/8	5 3/8	3 1/4	1 9/32
CRFBS-20R	1 1/4 R	3 3/4	2 3/4	1 7/8	2 1/16	1 5/8	1 1/4	3/8	5 3/8	3 1/4	3/8
CRFBS-20	1 1/4	4 1/4	3 1/4	2	2 3/8	1 7/8	1 1/4	1/2	6 1/8	3 3/4	1/2
CRFBS-23	1 7/16	4 1/4	3 1/4	2	2 3/8	1 7/8	1 1/4	1/2	6 1/8	3 3/4	1/2

## 2 Bolt Flange



DESCRIPTION	SHAFT SIZE	A	B	C	E	J	BOLT SIZE
BFT-12	3/4	4 13/32	3 17/32	7/16	1 9/32	2 1/2	3/8
BFT-16	1	4 7/8	3 57/64	17/32	1 7/16	2 3/4	7/16
BFT-19	1 3/16	5 9/16	4 19/32	17/32	1 9/16	3 1/4	7/16
BFT-20R	1 1/4 R	5 9/16	4 19/32	17/32	1 9/16	3 1/4	1/2
BFT-20	1 1/4	6 1/8	5 1/8	9/16	1 3/4	3 3/4	1/2
BFT-23	1 7/16	6 1/8	5 1/8	9/16	1 3/4	3 3/4	1/2
BFT-24	1 1/2	6 3/4	5 21/32	9/16	2 1/64	4 1/8	1/2
BFT-27	1 11/16	7 11/16	5 27/32	9/16	2 3/64	4 3/8	9/16
BFT-31	1 15/16	7 7/16	6 3/16	9/16	2 5/32	4 9/16	9/16
BFT-35	2 3/16	8 1/2	7 1/4	13/16	2 5/16	5 1/4	5/8

## 4 Bolt Flange



DESCRIPTION	SHAFT SIZE	A	B	C	E	BOLT SIZE
BF-12	3/4	3 3/8	2 1/2	7/16	19/32	3/8
BF-16	1	3 3/4	2 3/4	17/32	1 7/16	7/16
BF-19	1 3/16	4 1/4	3 1/4	17/32	1 9/16	7/16
BF-20R	1 1/4 R	4 1/4	3 1/4	17/32	1 9/16	7/16
BF-20	1 1/4	4 5/8	3 5/8	9/16	1 3/4	7/16
BF-23	1 7/16	4 5/8	3 5/8	9/16	1 3/4	1/2
BF-24	1 1/2	5 1/8	4	9/16	2 1/64	1/2
BF-27	1 11/16	5 3/8	4 1/8	9/16	2 3/64	9/16
BF-31	1 15/16	5 5/8	4 3/8	9/16	2 5/32	9/16
BF-35	2 3/16	6 3/8	5 1/8	13/16	2 5/16	5/8
BF-39	2 7/16	6 7/8	5 5/8	13/16	2 25/32	5/8

## End Caps

### Stainless Steel Bolt On End Caps for 2 Bolt & 4 Bolt Flange Units

SHAFT SIZE	TWO BOLT OPEN CAP	TWO BOLT CLOSED CAP	FOUR BOLT OPEN CAP	FOUR BOLT CLOSED CAP
3/4	N/A	N/A	N/A	N/A
1	TEO-16	TEC-16	FEO-16	FEC-16
1 3/16	TEO-19	TEC-19	FEO-19	FEC-19
1 1/4 R	TEO-19	TEC-19	FEO-19	FEC-19
1 1/4	TEO-20	TEC-23	FEO-20	FEC-23
1 7/16	TEO-23	TEC-23	FEO-23	FEC-23
1 1/2	TEO-24	TEC-24	FEO-24	FEC-24
1 11/16	TEO-27	TEC-27	FEO-27	FEC-27
1 15/16	TEO-31	TEC-31	FEO-31	FEC-31
2 3/16	TEO-35	TEC-35	FEO-35	FEC-35
2 7/16	N/A	N/A	N/A	N/A

### Snap On Polypropylene End Caps for Pillow Block & Flange Bracket Units

SHAFT SIZE	CLOSED CAP	OPEN CAP
3/4	SEC-12	SEO-12
1	SEC-16	SEO-16
1 3/16	SEC-19	SEO-19
1 1/4 R	SEC-19	SEO-20R
1 1/4	SEC-23	SEO-20
1 7/16	SEC-23	SEO-23
1 1/2	SEC-24	SEO-24
1 11/16	SEC-27	SEO-27
1 15/16	SEC-31	SEO-31
2 3/16	SEC-35	SEO-35
2 7/16	SEC-39	SEO-39

EPT does not assume responsibility for the accuracy of this document. The information contained herein is based upon current published data available at the time of creation. All interchanges should be compared with actual current manufacturing drawings. All dimensions should be compared and verified prior to product selection. For more information contact Application Engineering at 630-898-9620 or [www.sealmaster.engineering@emerson-ept.com](mailto:www.sealmaster.engineering@emerson-ept.com).

© Emerson Power Transmission Manufacturing, L.P. 2000. All Rights Reserved.  
SEALMASTER and BROWNING are registered trademarks of Emerson Power Transmission Manufacturing L.P.